



PHASING AND IMPLEMENTATION

The following pages outline phasing recommendations for the Kruckeberg Botanic Garden that seem desirable to address the needs, vision, and requirements of a private garden’s evolution into the public domain. With the transfer of this property from a private residence to a commercial public entity, new sets of codes, restrictions, and opportunities come into play. These deal with public safety, health, and well-being and ensure that equal opportunities are afforded to all. Within a limited budget, Phase 1 responds to these immediate needs by providing on-site public parking to reduce impacts to the surrounding residential community, adding much needed public restrooms, and creating a permanent and separate service access road and staff parking area.

Phase 2 focuses on siting an interpretive switchback boardwalk trail that connects the upper and lower gardens in an aesthetic ADA-compliant manner. It is also envisioned that an ADA-compliant loop path would be routed through the lower garden. While it would be optimal to build the environmental learning center in Phase 2, it is recognized that lack of funding may require deferment to a later phase.

Further development of future phases depends on many factors, most importantly securing funding and the commitment of the City, Foundation, and public to support and encourage new work to proceed. In the end, this alone will determine how quickly Garden projects are completed and the Garden vision, as outlined in this report, is realized.

This is a modest plan as represented by the development costs associated with each phase in 2010 dollars. It retains the legacy garden of the Kruckebergs in a manner that invites and accommodates public exploration and enhances the public education and enjoyment of one of the treasures of Shoreline.

PHASING AND IMPLEMENTATION

PHASE 1



0 25' 50' 75' 100'
Scale: 1"=100'

Z
O
N
E
S
I
M
P
L
E
M
E
N
T
A
T
I
O
N
A
N
D
I
M
P
L
E
M
E
N
T
A
T
I
O
N
S
I
N
G

- A. Security fence and gates
- B. Parking for up to 10 cars
- C. Arrival drop-off deck
- D. Information/ticketing gatehouse
- E. Interpretive panel(s) and wayfinding orientation map
- F. Entry sign
- G. Service road and staff parking for two cars
- H. Porta-potty shelter
- I. Plant sales area
- J. Entry garden and path improvements

Estimate of Probable Construction Costs

Parking and Service Road	\$410,000-\$625,000*
Interpretive Graphics	\$ 25,000-\$50,000
Total	\$435,000-\$675,000

* Final cost pending detailed design

PHASE 2

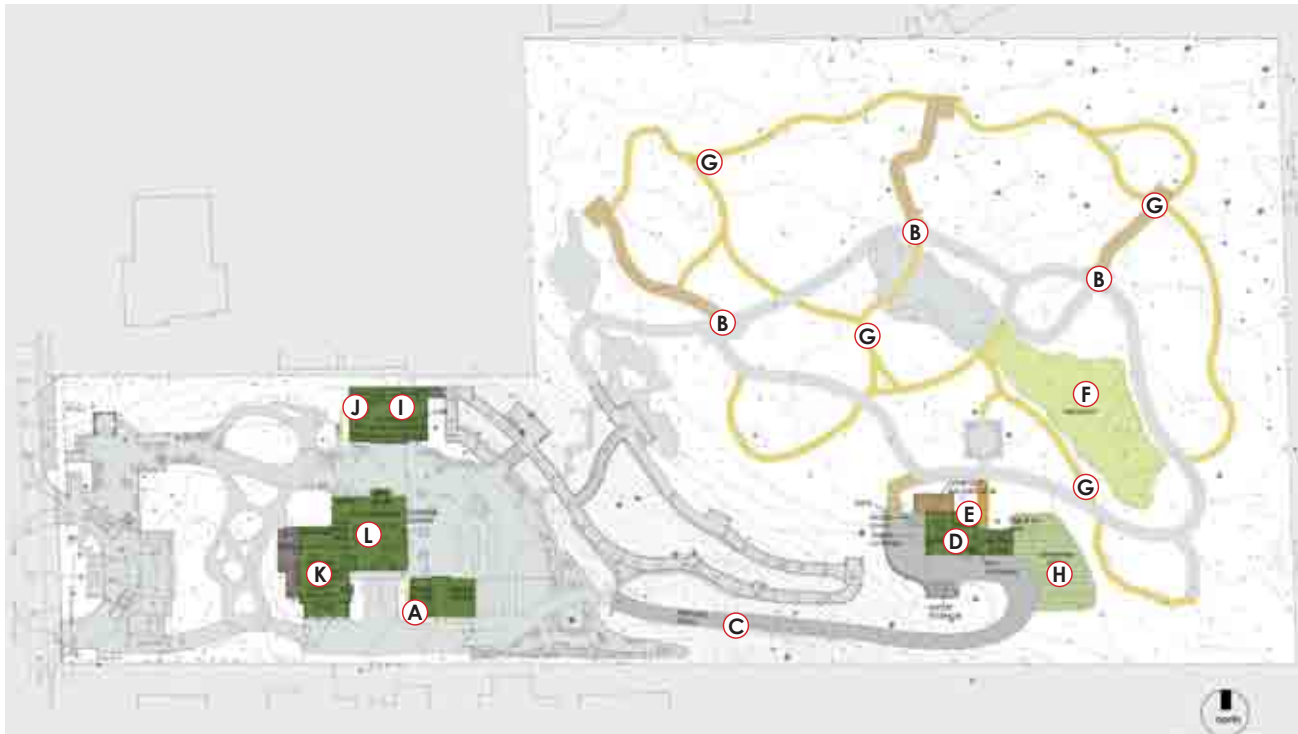


- A. Relocate/replace greenhouse
- B. Stone overlook wall
- C. Courtyard improvements
- D. Switchback boardwalk trail
- E. Recirculation pond and stream
- F. Lower wetland pond, overlook and bridge
- G. Interpretive graphics
- H. Lower garden/pathway improvements
- I. Central meadow
- J. Lower garden shelter

Estimate of Probable Construction Costs

ADA Access Trail and Stairs	\$550,000-\$690,000
Water Feature	\$60,000-\$75,000
Gathering Space and Overlook	\$200,000-\$250,000
Interpretive Graphics	\$80,000-\$100,000
Total	\$890,000-\$1,115,000

FUTURE PHASES



Scale: 1"=100'

- A. Headhouse and new and enlarged greenhouse
- B. Lower garden interpretive kiosk
- C. Widen/improve service road upper garden to lower
- D. Maintenance-garage, storage shed and equipment
- E. Lower garden public restroom
- F. Lower garden meadow
- G. Lower garden path improvements
- H. Plant growing field
- I. Environmental learning center and offices
- J. Public restrooms
- K. House remodel/caretaker residence
- L. The Commons

Estimate of Probable Construction Costs

Maintenance, Propagation and Service Road	\$150,000-\$190,000
Environmental Learning Center, the Commons and House Renovation	\$1,900,000-\$2,400,000
Interpretive Graphics	\$110,000-\$130,000
Lower Garden Improvements	\$50,000-\$60,000
Total	\$2,210,000-\$2,780,000

PHASING AND IMPLEMENTATION



A P P E N D I C E S

Dunn Gardens Letter
Guiding Principles for the Kruckeberg Botanic Garden
Current Plant Collection Maps
Kruckeberg Botanic Garden Plant List



April 29, 2010

Board of Directors

Chris Smith Towne, President
Ted Andrews, VP/Treasurer
Pat Dunn, Secretary
Robert Findlay, VP
Mimi Kirsch, VP
Dina Mandoli, VP
Ann Ormsby, VP
George Vestal, Pres. Elect
Jenny Wyatt, VP

Jann Blackburn
Linda Breiwick
Gloria Butts
Beth Dodrill
Michael Glenn, M.D.
Gayle Harris
Connie Hokanson
Ruth Kagi
Peg Marckworth
Ann McCutchan
Char Dunn McGinnis
Alex McKallor
Peter Morrill
Iain Robertson
Susan Robinson
Barbara Waske
Glenn Withey

Bruce Lamka *
Immediate Past President

Past Presidents

Christopher Bayley *
Michael Casteel *
Susan Dunn *
Dirk Giseburt *
Linda Hanson*
C. David Hughbanks*

Executive Director

Sue Nevler *

Curators

Charles Price
Glenn Withey

Advisors

J. Michael Kaiser
Konrad Liegel

*Exofficio Boardmembers

Dick Deal, Director, Department of Parks, Recreation and Cultural Services
City of Shoreline
17500 Midvale Avenue N.
Shoreline, WA 98133

Bill Schnall, President
Kruckeberg Botanic Garden Foundation Board
18385 17th Place NW
Shoreline WA 98177

Mssrs. Deal and Schnall,

After a detailed presentation and review, on April 15, 2010, of the Master Plan for the Kruckeberg Botanic Garden, the E.B. Dunn Garden Trust board, holder of the conservation easement, enthusiastically endorses the proposed plan as presented. Making the presentation for the City of Shoreline were its representative, David Buchan and their consultants John Swanson, Landscape Architect, and Sue Nicol, Arborist. Trust members present included Iain Robertson, Beth Dodrill and Robert Findlay from our Conservation Committee, and Chris Smith Towne, board president.

Our committee found that the plan complies with the conditions of the conservation easement, which include conservation values, construction limits, as well as permitted and prohibited uses. They found that the small variations from these guidelines shown on the plans were understandable and acceptable adjustments made within the purposes and goals of a conservation easement. They were necessary as the planners considered functional needs of a more public facility, cultural needs of the horticultural collection, Dr. Kruckeberg's concerns and community inputs and codes. Overall, we found the authors of the proposal to be commendably concerned with preparing a feasible plan in its modesty and flexibility, one that accomplishes the goals of the original owners, the Kruckebergs; the current grantor of the easement, the City of Shoreline; the Kruckeberg Botanic Garden board of directors; and the neighborhood.

The E.B. Dunn Garden Trust, consistent with its mission, continues to enjoy its relationship with the Kruckeberg Botanic Garden board and the City of Shoreline in the conservation of this extraordinary public asset in this region.

Sincerely yours,

Chris Smith Towne, President Sue Nevler, Exec Dir. Robert Findlay, VicePresident/Chair
E.B. Dunn Garden Trust E.B. Dunn Garden Trust Dunn Gardens Conservation Cmt.

Cc: John Swanson
John Swanson Design Studio

Cc: Dr. Arthur Kruckeberg
Kruckeberg Botanic Garden

*The E.B. Dunn Historic Garden Trust • P.O. Box 77126 • Seattle, Washington 98177
206-362-0933 • www.dunngardens.org • info@dunngardens.org*

GUIDING PRINCIPLES FOR THE KRUCKEBERG BOTANIC GARDEN BY ARTHUR R. KRUCKEBERG

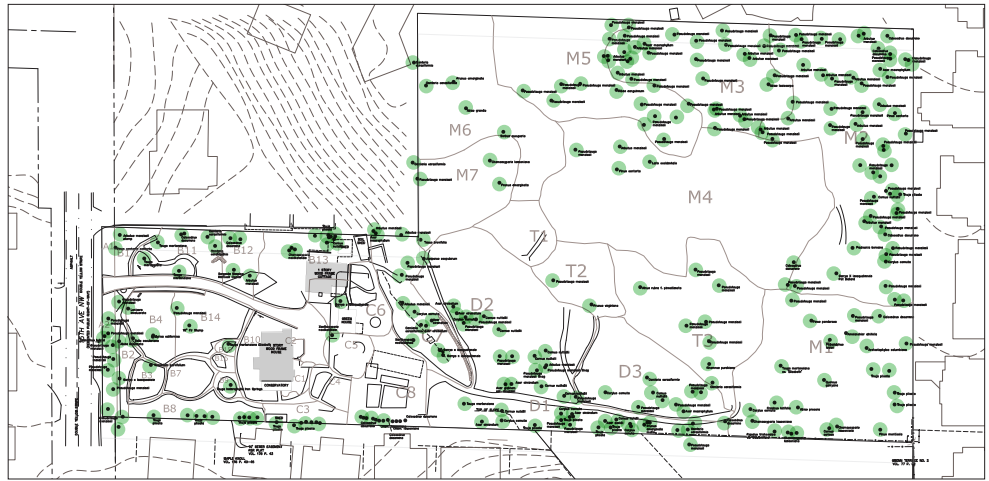
The founding principle of the Kruckeberg Botanic Garden was that plant diversity is one of the wonders of the natural world and that there is both scientific and educational value to presenting that diversity in a natural setting. The setting of the Garden is that of a remnant Puget Sound lowland ecosystem, with a matrix of native conifers and understory vegetation, among which plants from this and other biomes are grown that complement the beauty and diversity of the native flora. Throughout the development of the Garden, plants, whether native or exotic, have been selected for their beauty and uniqueness, thus providing the added amenity of horticultural value for the plants in the collection.

In order to preserve this vision for the future of the Kruckeberg Botanic Garden, the following principles can serve as a guide to the future management of the Garden.

- The native flora of the Pacific Northwest (PNW) should always be a primary theme in the Garden and should be defined by the broad climatic zone that is shared by a contiguous region ranging from Northern California to parts of the northern Rockies west to Montana and north to British Columbia.
- The Garden should maintain a preference (though this need not be exclusive) for plants in naturally occurring form, including natural hybrids and varieties, over garden hybrids and cultivars. However, the overriding principle of diversity and the goal of having plants that complement naturally occurring forms permits the judicious selection of garden varieties.
- For plants not native to the PNW, plants from similar climatic zones and plants taxonomically related to our native flora should have preference. Due to the climatic similarity and biogeographic connection, East Asian plants are a strong preference. Secondly, other cool, temperate, Mediterranean climates (e. g. Chile), will provide valuable components to the Garden.
- Represented in the Garden are several taxonomic groups and one specialized ecological habitat that are of particular interest to the founders and or particular value due to the diversity of these collections. These include the oaks (*Quercus* spp.), conifers (especially the diversity of unusual conifer families and genera), and the serpentine garden, which represent the founder's primary contributions to science. Other taxonomic groups that would fit well with the principles on which the Garden has been developed and might merit augmenting include maples (*Acer* spp.), witch hazels (*Hamamelidaceae*), and the hydrangea family (*Hydrangeaceae*). In addition, continued expansion of native woodland herbaceous perennials would be desirable and would permit increased biodiversity in a space-limited setting.
- While the woodland garden is a prominent theme in the Garden, the "meadows" provide an important habitat to display sun-loving plants and special collections in rockeries, including the serpentine collection. An effort should be made to prevent over-planting the meadows with trees in order to maintain the highlight environment necessary for these collections and to preserve the vision of expansiveness of the open meadow.
- The Garden should continue to serve as a reserve for germplasm of rare and unusual plants from the PNW and elsewhere. The Garden should participate in native plant seed collection and support collaborations that bring appropriate new plants into the Garden from foreign locations. Propagation of the Garden's diversity by the MsK Nursery shall be perpetuated.
- The Garden should continue to be managed as the primary source material for the MsK Nursery. Where feasible, existing plants should be perpetuated from Garden collections.
- The Garden should take care to avoid the use of showy displays of cultivated plants for aesthetic purposes only.

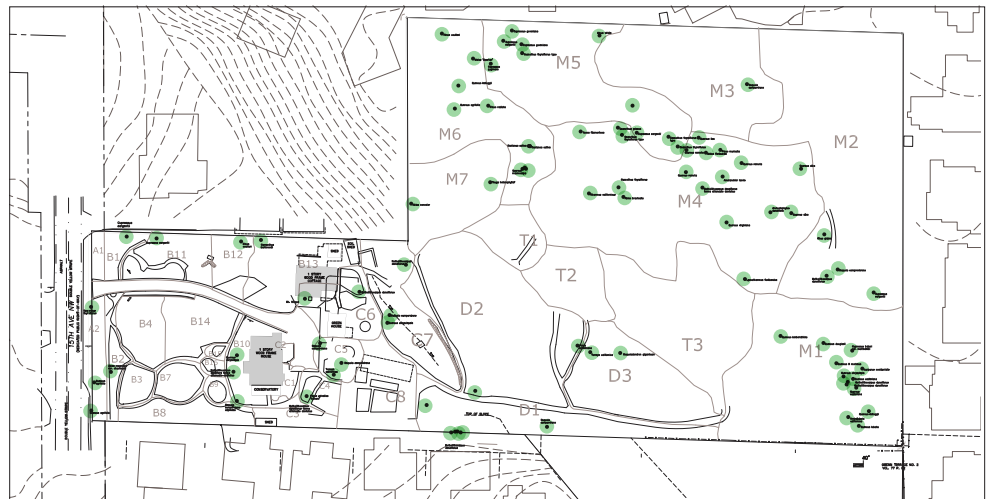
CURRENT PLANT COLLECTION MAPS

**Northwest
Native Plants**



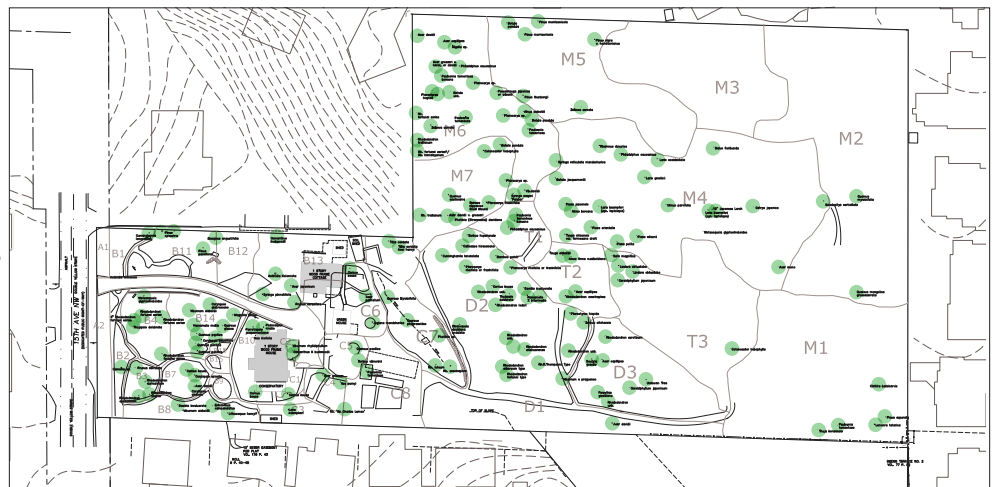
Scale : Not to Scale

**West Coast
Plants**



Scale : Not to Scale

Asian Plants



Scale : Not to Scale

KBG PLANT LIST : TREES

Existing Plant List Provided by KBG June 10, 2010

Botanical Name	Common Name	Botanical Name	Common Name
<i>Abelia chinensis</i>	Chinese abelia	<i>Cercis siliquastrum</i>	Judas tree
<i>Abies bracteata</i>	Santa Lucia fir	<i>Chamaecyparis lawsoniana</i>	Port Orford Cedar
<i>Abies concolor</i>	White fir	<i>Chamaecyparis nootkatensis</i>	Alaska cedar
<i>Abies firma</i>	Momi fir	<i>Chamaecyparis nootkatensis 'Fastigiata'</i>	Fastigiata Alaska cedar
<i>Abies grandis</i>	Grand fir	<i>Chamaecyparis obtusa</i>	Hinoki cypress
<i>Abies koreana</i>	Korean fir	<i>Chamaecyparis pisifera</i>	Sawara cypress
<i>Abies lasiocarpa</i>	Subalpine fir	<i>Chionanthus virginicus</i>	Fringe tree
<i>Abies magnifica var. shastensis</i>	Shasta red fir	<i>Cladrastis lutea</i>	Yellowwood
<i>Abies pinsapo</i>	Spanish fir	<i>Cornus alternifolia</i>	Pagoda dogwood
<i>Abies procera</i>	Noble fir	<i>Cornus capitata</i>	Evergreen dogwood
<i>Acer bifidum</i>		<i>Cornus kousa</i>	Japanese dogwood
<i>Acer buergerianum</i>	Trident maple	<i>Cornus kousa</i>	Kousa dogwood
<i>Acer capillipes</i>	Stripe bark maple	<i>Cornus macrophylla</i>	Large leaved dogwood
<i>Acer carpinifolium</i>	Hornbeam maple	<i>Cornus mas</i>	Cornelian cherry
<i>Acer circinatum</i>	Vine maple	<i>Cornus nuttallii</i>	Pacific flowering dogwood
<i>Acer davidii</i>	Stripe bark maple	<i>Corylus avellana or maxima 'purpurea'</i>	Red hazelnut
<i>Acer distylum</i>	Linden leaved maple	<i>Corylus cornuta</i>	Hazelnut
<i>Acer ginnala</i>	Amur maple	<i>Crataegus douglasii</i>	Hawthorn
<i>Acer glabrum</i>	Sierra maple	<i>Cryptomeria japonica</i>	Japanese cedar
<i>Acer griseum</i>	Paper bark maple	<i>Cunninghamia lanceolata</i>	China fir
<i>Acer grosseri v. hersii, or davidii</i>	Stripe bark maple	<i>Cupressus bakeri</i>	Modoc cypress
<i>Acer henryi</i>	Henry's maple	<i>Cupressus goveniana</i>	Gowen cypress
<i>Acer japonicum</i>	Japanese maple	<i>Cupressus pygmaea</i>	Pygmy cypress
<i>Acer macrophyllum</i>	Big leaf maple	<i>Cupressus sargentii</i>	Sargent's cypress
<i>Acer mono</i>	Usugumo maple	<i>Davidia involucrata</i>	Dove tree
<i>Acer palmatum</i>	Japanese maple	<i>Diospyros lotus</i>	Japanese persimmon
<i>Acer rubrum</i>	Red maple	<i>Diospyros virginiana</i>	American persimmon
<i>Aesculus californica</i>	California buckeye	<i>Elaeocarpus sylvestris</i>	
<i>Albizia julibrissin</i>	Silk tree	<i>Eleagnus angustifolia</i>	Russian olive
<i>Alnus cordata</i>	Italian alder	<i>Embothrium coccineum</i>	Chilian fire-tree
<i>Alnus firma</i>		<i>Erica arborea</i>	Tree heath
<i>Alnus glutinosa</i>	Black alder	<i>Eucalyptus gunnii</i>	Snow-gum
<i>Alnus rubra</i>	Red alder	<i>Eucommia ulmoides</i>	China rubber tree
<i>Alnus sieboldii</i>	Oba Yashibushi	<i>Eucryphia glutinosa</i>	Eucryphia
<i>Alnus sinuata</i>	Native slide alder	<i>Euonymus latifolius</i>	Spindle tree
<i>Alnus viridis</i>	Green alder	<i>Euonymus occidentalis</i>	Spindle tree
<i>Amelanchier alnifolia</i>	Service berry	<i>Euptelea polyandra</i>	Euptelea
<i>Amelanchier laevis</i>	Allegheny serviceberry	<i>Fagus sylvatica</i>	European beech
<i>Amelanchier ovalis</i>	Snowy mespilus	<i>Fraxinus bungeana</i>	Hardy Chinese ash
<i>Aralia californica</i>	California ginseng	<i>Fraxinus dipetala</i>	California ash
<i>Aralia spinosa</i>	Devil's walking stick	<i>Fraxinus latifolia</i>	Oregon ash
<i>Arbutus menziesii</i>	Madrone	<i>Fraxinus ornus</i>	Mana ash
<i>Athrotaxis cupressoides</i>	Tasmanian cypress	<i>Fraxinus oxycarpa</i>	Narrow leaved ash
<i>Betula albosinensis</i>	Chinese red birch	<i>Fraxinus sikkimensis</i>	
<i>Betula davurica</i>	Manchurian birch	<i>Gleditsia japonica</i>	Japanese honey locust
<i>Betula fontinalis</i>	Water birch	<i>Halesia carolina</i>	Carolina silver bell
<i>Betula gmelinii</i>		<i>Hoheria lyallii</i>	Mountain ribbonwood
<i>Betula jacquemontii</i>	Himalayan birch	<i>Ilex aquifolium</i>	English holly
<i>Betula lenta</i>	Sweet birch	<i>Juglans mandshurica</i>	Manchurian walnut
<i>Betula maximowiczii</i>	Monarch Birch	<i>Juglans sieboldii</i>	Japanese walnut
<i>Betula pendula</i>	European weeping birch	<i>Koelreuteria paniculata</i>	Golden rain tree
<i>Betula platyphylla</i>	White birch	<i>Laburnum alpinum</i>	Golden chain tree
<i>Betula schmidtii</i>	Smith's birch	<i>Lagerstroemia subcostata</i>	Crepe myrtle
<i>Betula utilis</i>	Himalayan birch	<i>Larix decidua</i>	European larch
<i>Buxus balearica</i>	Spanish box tree	<i>Larix gmelinii</i>	Dahurian larch
<i>Calocedrus decurrens</i>	Incense cedar	<i>Larix kaempferi</i>	Japanese larch
<i>Carpinus laxiflorus</i>	Hornbeam	<i>Larix occidentalis</i>	Western larch
<i>Castanea sativa</i>	European chestnut	<i>Larix occidentalis x lyallii</i>	Western larch hybrid
<i>Cedrus deodara</i>	Deodar cedar	<i>Leucosidea sericea</i>	
<i>Cedrus libani</i>	Cedar of Lebanon	<i>Liquidambar formosana</i>	Formosan sweetgum
<i>Celastrus scandens</i>	American bittersweet	<i>Liriodendron tulipifera</i>	American tulip tree
<i>Celtis reticulata</i>	Western hackberry	<i>Lithocarpus henryi</i>	Henry tanbark oak
<i>Cephalotaxus harringtonia</i>	Japanese Plum yew	<i>Lyonothamnus floribundus</i>	Santa Cruz Ironwood
<i>Cercidiphyllum japonicum</i>	Katsura tree	<i>Maackia amurensis</i>	Amur maackia
<i>Cercis chinensis</i>	Chinese redbud	<i>Maackia chinensis</i>	Chinese maackia
		<i>Magnolia campbellii</i>	Campbell's magnolia

A P P E N D I C E S

Trees

Botanical Name	Common Name	Botanical Name	Common Name
<i>Magnolia denudata</i>	Yulan magnolia	<i>Prunus x blireiana</i>	Blireiana plum
<i>Magnolia kobus</i>	Kobus magnolia	<i>Pseudolarix amabilis</i>	Golden larch
<i>Magnolia macrophylla</i>	Big leaf magnolia	<i>Pseudotsuga japonica</i>	Japanese douglas fir
<i>Magnolia tripetala</i>	Umbrella magnolia	<i>Pseudotsuga menziesii</i>	Douglas Fir
<i>Malus floribunda</i>	Japanese crabapple	<i>Pterocarya fraxinifolia</i>	Caucasian wingnut
<i>Malus sargentii?</i>	Sargent crabapple	<i>Pterostyrax hispida</i>	Epaulette tree
<i>Malus sieboldii</i>	Japanese crabapple	<i>Pyrus ussuriensis</i>	Siberian pear
<i>Malus 'Spartan'</i>	Spartan apple	<i>Quercus acutissima</i>	Sawtooth oak
<i>Maytenus boaria</i>	Mayten tree	<i>Quercus agrifolia</i>	California live oak
<i>Metasequoia glyptostroboides</i>	Dawn redwood	<i>Quercus alba</i>	Eastern white oak
<i>Michelia doltsopa</i>	Chinese magnolia	<i>Quercus calliprinus</i>	Israel oak
<i>Michelia yunnanense</i>	Michelia	<i>Quercus castanaefolia</i>	Chestnut-leaved oak
<i>Nothofagus antarctica</i>	Antarctic beech	<i>Quercus cerris</i>	Turkey oak
<i>Nothofagus dombeyi</i>	Southern beech	<i>Quercus chrysolepis</i>	Canyon Live Oak
<i>Notholithocarpus densiflorus</i>	Tan bark oak	<i>Quercus douglasii</i>	Blue oak
<i>Notholithocarpus densiflorus</i> <i>forma attenuato dentatus</i>	Mutant tan bark oak	<i>Quercus gambellii</i>	Utah white oak
<i>Nyssa sylvatica</i>	Tupelo	<i>Quercus garryana</i>	Garry oak
<i>Ostrya japonica</i>	Japanese hop hornbeam	<i>Quercus glauca</i>	Japanese Blue Oak
<i>Ostrya knowltonii</i>	Knowltons hop-hornbeam	<i>Quercus hypoleucoides</i>	Silverleaf oak
<i>Oxydendrum arboreum</i>	Sourwood	<i>Quercus ilex</i>	Holly or holm oak
<i>Parrotia persica</i>	Persian ironwood	<i>Quercus kelloggii</i>	California black oak
<i>Paulownia koreana</i>	Empress tree	<i>Quercus lobata</i>	Valley oak
<i>Paulownia tomentosa</i>	Empress tree	<i>Quercus lobata x dunnii</i>	Valley oak
<i>Picea abies</i>	Dwarf Norway spruce	<i>Quercus macranthera</i>	Caucasian oak
<i>Picea asperata</i>	Dragon spruce	<i>Quercus macrocarpa</i>	Burr Oak
<i>Picea breweriana</i>	Brewer's spruce	<i>Quercus mongolica</i>	Mongolian oak
<i>Picea jezoensis</i>	Jezo spruce	<i>Quercus mongolica-grosseserrata</i>	
<i>Picea orientalis</i>	Armenian spruce	<i>Quercus myrsinifolia</i>	Chinese evergreen oak
<i>Picea polita</i>	Tigertail spruce	<i>Quercus petraea</i>	Sessile oak
<i>Picea smithiana</i>	Morinda spruce	<i>Quercus phellos</i>	Willow oak
<i>Picea wilsonii</i>	Wilson's spruce	<i>Quercus phillyraeoides</i>	Ubame oak
<i>Pieris formosana</i>	Himalayan pieris	<i>Quercus pontica</i>	Armenian oak
<i>Pieris japonica</i>	Japanese pieris	<i>Quercus pubescens or volcanica</i>	Downy oak
<i>Pieris polita</i>	Japanese pieris	<i>Quercus remota</i>	Channel Islands oak
<i>Pinus bungeana</i>	Lacebark pine	<i>Quercus rubra</i>	Northern red oak
<i>Pinus cembra</i>	Swiss stone pine	<i>Quercus serrata</i>	Konara oak
<i>Pinus contorta</i>	Lodgepole pine	<i>Quercus suber</i>	Cork oak
<i>Pinus coulteri</i>	Big cone pine	<i>Quercus trojana</i>	Macedonian oak
<i>Pinus flexilis</i>	Limber pine	<i>Quercus virginia</i>	Southern live oak
<i>Pinus heldrichii</i>	Macedonian pine	<i>Quercus x morehus</i>	Oracle oak
<i>Pinus monticola</i>	Western white pine	<i>Quercus x townei</i>	
<i>Pinus morrisonicola</i>	Taiwan pine	<i>Rhamnus purshiana</i>	Cascara
<i>Pinus muricata</i>	Bishop pine	<i>Robinia hispida</i>	Bristly locust
<i>Pinus nigra</i>	Austrian pine	<i>Salix magnifica</i>	Magnificent willow
<i>Pinus parviflora</i>	Japanese white pine	<i>Salix scouleriana</i>	Scouler's willow
<i>Pinus pinaster</i>	Maritime pine	<i>Sciadopitys verticillata</i>	Japanese umbrella pine
<i>Pinus pinea</i>	Italian stone pine	<i>Sequoia sempervirens</i>	Coast redwood
<i>Pinus ponderosa</i>	Ponderosa pine	<i>Sequoia sempervirens 'Adpressa'</i>	Adpressa redwood
<i>Pinus pumila</i>	Siberian dwarf pine	<i>Sequoiadendron giganteum</i>	Giant sequoia
<i>Pinus radiata</i>	Monterey Pine	<i>Sophora japonica</i>	Japanese pagoda tree
<i>Pinus strobus</i>	Eastern white pine	<i>Sorbus aria</i>	White Beam
<i>Pinus sylvestris</i>	Scots pine	<i>Sorbus aucuparia</i>	European mountain ash
<i>Pinus thunbergii</i>	Japanese black pine	<i>Sorbus caloneura</i>	Small leaved whitebeam
<i>Pinus wallichiana</i>	Himalayan pine	<i>Sorbus hupehensis</i>	Hubei rowan
<i>Pinus yunnanensis</i>	Yunnan Pine	<i>Sorbus lanata</i>	Hairy rowan
<i>Populus tremuloides</i>	Quaking aspen	<i>Sorbus megalocarpa</i>	Mountain ash
<i>Populus trichocarpa</i>	Cottonwood	<i>Sorbus prattii</i>	White-Berried sorbus
<i>Prunus armeniaca?</i>	Apricot	<i>Sorbus reducta</i>	Dwarf rowan
<i>Prunus besseyi</i>	Sand Cherry	<i>Sorbus sitchensis</i>	Mountain ash
<i>Prunus cerasifera</i>	Thundercloud plum	<i>Sorbus vilmorinii</i>	Mountain Ash
<i>Prunus cerasus</i>	Pie cherry	<i>Stewartia monodelpha</i>	Stewartia
<i>Prunus emarginata</i>	Bitter cherry	<i>Stewartia pseudocamellia</i>	Japanese stewartia
<i>Prunus pisardii</i>	Cherry plum	<i>Styrax japonica</i>	Japanese snowbell
<i>Prunus serrulata</i>	Japanese flowering cherry	<i>Styrax obassia</i>	Fragrant snowbell
<i>Prunus virginiana</i>	Chokecherry	<i>Taxodium distichum</i>	Bald cypress
		<i>Taxus baccata</i>	English yew

Trees

Botanical Name	Common Name
<i>Taxus baccata fastigiata</i>	Columnar English yew
<i>Taxus brevifolia</i>	Western yew
<i>Thuja koraiensis</i>	Korean cedar
<i>Thuja plicata</i>	Western red cedar
<i>Thujopsis dolobrata</i>	Hiba arborvitae
<i>Tillia cordata</i>	Linden
<i>Torreya californica</i>	California nutmeg tree
<i>Tsuga canadensis</i>	Eastern hemlock
<i>Tsuga canadensis 'Hussei'</i>	Hussei' Eastern hemlock
<i>Tsuga caroliniana</i>	Carolina hemlock
<i>Tsuga heterophylla</i>	Western hemlock
<i>Tsuga heterophylla 'Iron Springs'</i>	Iron Springs' western hemlock
<i>Tsuga mertensiana</i>	Mountain hemlock
<i>Tsuga 'Sargent's Weeping'</i>	Sargent's weeping hemlock
<i>Tsuga sieboldii</i>	Japanese hemlock
<i>Ulmus parvifolia</i>	Chinese elm
<i>Umbellularia californica</i>	California bay laurel
<i>x Cupressocyparis leylandii</i>	Leyland cypress
<i>Xanthocyparis nootkatensis</i>	Alaskan yellow cedar
<i>Zanthoxylum piperitum</i>	Japanese pepper tree
<i>Zelkova serrata</i>	Japanese zelkova

Shrubs

Botanical Name	Common Name
<i>Adenocarpus decorticans</i>	Silver broom
<i>Alangium platanifolium</i>	
<i>Arctostaphylos columbiana</i>	hairy manzanita
<i>Arctostaphylos densiflora</i>	Manzanita
<i>Arctostaphylos hookeri</i>	Hookers manzanita
<i>Arctostaphylos patula</i>	Greenleaf manzanita
<i>Arctostaphylos x media</i>	Media manzanita
<i>Azara dentata</i>	Toothed azara
<i>Azara microphylla</i>	Box leaf azara
<i>Berberis aggregata</i>	Salmon barberry
<i>Berberis calliantha</i>	Black berried barberry
<i>Berberis canadensis</i>	American barberry
<i>Berberis gagnepainii</i>	
<i>Berberis 'hybridogagne-painii'</i>	Barberry
<i>Berberis stapfiana?</i> (<i>wilsoniae</i> v. <i>stapfiana?</i>)	
<i>Berberis triacanthophora</i>	Threespine barberry
<i>Berberis wilsonii</i>	Wilson barberry
<i>Buddleia colvilei</i> or <i>lindleyana</i>	
<i>Bupleurum fruticosum</i>	Shrubby hare's ears
<i>Buxus wallichiana</i>	Himalayan box
<i>Callicarpa bodinieri</i> or <i>japonica</i>	Beautyberry
<i>Callicarpa hirasawana</i>	Beautyberry
<i>Calycanthus floridus</i>	Allspice
<i>Calycanthus occidentalis</i>	Western bush allspice
<i>Camellia oleifera</i>	Oil seed camellia
<i>Camellia sasanqua</i>	Sasanqua camellia
<i>Camellia williamsii</i>	
<i>Caragana arborescens</i>	Siberian peashrub
<i>Carmichaelia australis</i>	Common broom
<i>Cassinia x ozothamnus</i>	
<i>Ceanothus arboreus</i>	California lilac
<i>Ceanothus gloriosus</i>	Pt. Reyes ceanothus
<i>Ceanothus griseus</i>	Carmel ceanothus
<i>Ceanothus hybrid</i>	California lilac
<i>Ceanothus impressus</i>	Santa Barbara ceanothus
<i>Ceanothus integerrimus</i>	Deer brush
<i>Ceanothus masonii</i>	Masons ceanothus
<i>Ceanothus prostratus</i>	Prostrate ceanothus
<i>Ceanothus thyrsiflorus</i>	California lilac
<i>Ceanothus thyrsiflorus hybrid</i>	Deerbrush
<i>Ceanothus thyrsiflorus repens</i>	California lilac
<i>Ceanothus thyrsiflorus type</i>	California lilac
<i>Ceanothus thyrsiflorus x iimpressus</i>	California lilac
<i>Ceanothus velutinus</i>	Snowbrush Ceanothus
<i>Cercocarpus betuloides</i>	Mountain mahogany
<i>Chimonanthus praecox</i>	Wintersweet
<i>Chimonanthus salicifolius</i>	Wintersweet
<i>Chimonanthus zhedjanensis</i>	Wintersweet
<i>Cistus laurifolius</i>	Rock rose
<i>Cistus sp. (ladanifer?)</i>	Rock rose
<i>Clethra barbinervis</i>	Summer-sweet



KBG Existing Plants

Shrubs

Botanical Name	Common Name	Botanical Name	Common Name
<i>Coprosma petriei</i>		<i>Juniperus squamata</i> 'Blue Star'	Blue star juniper
<i>Coprosma rugosa</i>		<i>Juniperus squamata</i> 'Meyeri'	Meyer juniper
<i>Cornus sericea</i>	Red osier dogwood	<i>Kerria japonica</i>	Japanese kerria
<i>Corylopsis chinensis</i>	Winter hazel	<i>Kolkwitzia amabilis</i>	Beauty bush
<i>Corylopsis glabrescens</i>	Winter hazel	<i>Ledum glandulosum</i>	Trapper tea
<i>Corylopsis pauciflora</i>	Buttercup winter hazel	<i>Leucothoe fontanesiana</i>	Fetterbush
<i>Corylopsis sinensis</i>	Winter hazel	<i>Lindera (Parabenzoin) praecox</i>	Spicebush
<i>Corylopsis spicata</i>	Winter hazel	<i>Lindera erythrocarpa</i>	Spicebush
<i>Corylopsis wilmottiae</i>	Winter hazel	<i>Lindera obtusiloba</i>	Japanese spicebush
<i>Cotinus coggyria</i>	Smokebush	<i>Lonicera frangrantissima</i>	Winter honeysuckle
<i>Cotoneaster hebeophylla</i>	Cotoneaster	<i>Lonicera involucrata</i>	Twin-berry
<i>Cotoneaster horizontalis</i>	Rockspray cotoneaster	<i>Lonicera morrowii</i>	Morrows honeysuckle
<i>Cotoneaster perpusillus</i>		<i>Lonicera standishii</i>	Winter honeysuckle
<i>Cotoneaster salicifolius</i>	Willow leaf cotoneaster	<i>Lonicera tatarica</i>	Tatarican honeysuckle
<i>Cotoneaster wardii</i>		<i>Mahonia aquifolium</i>	Tall Oregon grape
<i>Cytisus battandieri</i>	Atlas broom	<i>Mahonia japonica</i>	Japanese mahonia
<i>Daboecia cantabrica</i>	Irish heath	<i>Mahonia nervosa</i>	Low Oregon grape
<i>Danae racemosa</i>	Poet's laurel	<i>Mahonia piperiana</i>	Piper's Oregon grape
<i>Daphne bhulua</i>	Paper daphne	<i>Mahonia repens</i>	mahonia
<i>Daphne caucasica</i>	Caucasian daphne	<i>Mahonia x media</i> 'Arthur Menzies'	Arthur Menzies mahonia
<i>Daphne collina</i>		<i>Menziesia ciliicalyx</i>	False azalea
<i>Daphne laureola</i>	Spurge laural	<i>Menziesia ferruginea</i>	Rusty-leaf, fool's Huckleberry
<i>Daphne odora</i>	Winter daphne	<i>Microbiota decussata</i>	Siberian carpet cypress
<i>Daphne tangutica</i>		<i>Microcachrys tetragona</i>	
<i>Daphniphyllum macropodum</i>	False daphne	<i>Myrica californica</i>	Wax myrtle
<i>Decaisnea fargesii</i>	Blue bean	<i>Myrtus communis</i>	Roman myrtle
<i>Dendromecon rigidum</i>	California bush poppy	<i>Nandina domestica</i>	Sacred bamboo
<i>Deutzia glauca</i>	Deutzia	<i>Neviusia alabamensis</i>	Alabama snowwreath
<i>Deutzia gracilis</i>	Slender deutzia	<i>Neviusia cliftonii</i>	Shasta snowwreath
<i>Deutzia scabra</i>	Fuzzy deutzia	<i>Oemleria cerasiformis</i>	Indian plum
<i>Disanthus cercidifolius</i>	Disanthus	<i>Oplananax horridus</i>	Devil's club
<i>Elaeagnus macrophyllus</i>	Silverberry	<i>Osmanthus delavayi</i>	Delavay osmanthus
<i>Enkianthus campanulatus</i>	Redvein enkianthus	<i>Osmanthus heterophyllus</i>	Tea olive, holly olive
<i>Euonymus japonicus</i>	Japanese euonymus	<i>Osmanthus x burkwoodii</i>	hybrid tea olive
<i>Euonymus japonicus 'microphyllus'</i>	Japanese euonymus	<i>Osmanthus x fortunei</i>	Holly leaf osmanthus
<i>Exochorda racemosa</i>	Common pearlbrush	<i>Osteospermum jucundum</i>	African daisy
<i>Forsythia geraldiana</i>	Forsythia	<i>Pachystima myrsinites</i>	Oregon box
<i>Fremontodendron californicum</i>	Flannel bush	<i>Paeonia lutea</i>	Tree peony
<i>Fuchsia magellanica</i>	Hardy fuschia	<i>Parrotiopsis jacquemontiana</i>	
<i>Garrya elliptica</i>	Silk tassel bush	<i>Petrophyton hendersonii</i>	Olympic Mt Rockmat
<i>Garrya x issaquanaensis</i>	Silk-tassel bush	<i>Philadelphus caucasicus</i>	Caucas mock orange
<i>Gaultheria shallon</i>	Salal	<i>Philadelphus delavayi</i>	Delavay's mock orange
<i>Gaultheria x wisleyensis</i>	Wisley Pearl	<i>Philadelphus lewisii</i>	Lewis' mock orange
<i>Hamamelis japonica?</i>	Witch hazel	<i>Philadelphus mexicanus</i>	Mexican mock orange
<i>Hamamelis mollis</i>	Witch hazel	<i>Philadelphus microphyllus</i>	Little leaf mock orange
<i>Hamamelis x intermedia</i>	Witch hazel	<i>Philadelphus tomentosus</i>	Fuzzy mock orange
<i>Hebe buxifolia</i>	Hebe	<i>Phillyrea angustifolia</i>	Mock olive
<i>Hebe hulkeana</i>	New Zealand lilac	<i>Phillyrea latifolia</i>	Mock olive
<i>Heptacodium jasminoidea</i>	Chinese seven-son flower	<i>Photinia davidiana</i>	Chinese photinia
<i>Hippophae rhamnoides</i>	Sea buckthorn	<i>Photinia parvifolia</i>	Photinia
<i>Holodiscus discolor</i>	Oceanspray	<i>Physocarpus capitatus</i>	Pacific ninebark
<i>Hypericum forrestii</i>	Shrubby St. Johns wort	<i>Physocarpus opulifolius</i>	Eastern ninebark
<i>Ilex crenata</i>	Japanese holly	<i>Podocarpus macrophyllus</i>	Kusamaki
<i>Ilex latifolia</i>	Lusterleaf holly	<i>Podocarpus nivalis</i>	Alpine totara
<i>Ilex macropoda</i>		<i>Potentilla fructicosa</i>	Bush cinquefoil
<i>Ilex perado</i>	Madeira holly	<i>Prunus laurocerasus</i>	Cherry laurel
<i>Ilex pernyi</i>	Perny holly	<i>Prunus lusitanica</i>	Portuguese laurel
<i>Itea ilicifolia</i>	Holly leaf sweetspire	<i>Pyracantha angustifolia</i>	Fire thorn
<i>Jamesia americana</i>	Five petal cliffbush	<i>Pyracantha fortuneana</i>	Chinese firethorn
<i>Jasminum sp.</i>		<i>Quercus berberidifolia</i>	California scrub oak
<i>Juniperus chinensis</i>	Chinese juniper	<i>Quercus durata</i>	Leather oak
<i>Juniperus communis</i>		<i>Quercus sadleriana</i>	Sadler's oak
<i>Juniperus horizontalis</i>	Creeping juniper	<i>Quercus turbinella</i>	Sonoran scrub oak
<i>Juniperus occidentalis</i>	Western Juniper	<i>Quercus vaccinifolia</i>	Huckleberry oak
<i>Juniperus scopularum</i>	Rocky Mountain juniper	<i>Raphiolepis rosea</i>	Yedo hawthorn
		<i>Rhamnus californica</i>	Coffee berry

Shrubs

Botanical Name	Common Name
<i>Rhamnus davurica</i>	Dahurian buckthorn
<i>Rhamnus frangula</i>	Glossy buckthorn
<i>Rhododendron (Thompsonii series)</i>	
<i>Rhododendron aff. Vaseyi</i>	Pinkshell azalea
<i>Rhododendron anthocodon</i>	
<i>Rhododendron arboreum type</i>	
<i>Rhododendron augustinii</i>	
<i>Rhododendron augustinii or rubiginosum; triflorum type</i>	
<i>Rhododendron aureum</i>	
<i>Rhododendron auriculatum</i>	
<i>Rhododendron davidsonianum</i>	
<i>Rhododendron davidsonianum or triflorum series</i>	
<i>Rhododendron ferrugineum</i>	Alpenrose
<i>Rhododendron fortunei series</i>	
<i>Rhododendron grande</i>	
<i>Rhododendron hemsleyanum</i>	
<i>Rhododendron loderi</i>	
<i>Rhododendron lutescens</i>	
<i>Rhododendron luteum</i>	Yellow azalea
<i>Rhododendron macrophyllum</i>	Pacific rhododendron
<i>Rhododendron makinoi</i>	
<i>Rhododendron micranthum</i>	
<i>Rhododendron mucronulatum</i>	
<i>Rhododendron nitidulum</i>	
<i>Rhododendron occidentale</i>	Western azalea
<i>Rhododendron oreotrephes</i>	
<i>Rhododendron periclymenoides (nudiflorum)</i>	Pinxterbloom
<i>Rhododendron ponticum?</i>	Pontic rhododendron
<i>Rhododendron racemosum</i>	
<i>Rhododendron rubiginosum</i>	
<i>Rhododendron rupicolum</i>	
<i>Rhododendron russatum</i>	
<i>Rhododendron schlippenbachii</i>	Butterfly azalea
<i>Rhododendron serotinum</i>	
<i>Rhododendron sinogrande section</i>	
<i>Rhododendron 'Sir Charles Lemon'</i>	
<i>Rhododendron smirnowii</i>	
<i>Rhododendron spiciferum</i>	
<i>Rhododendron sutchuenense</i>	
<i>Rhododendron trailianum</i>	
<i>Rhododendron vaseyi</i>	Pinkshell azalea
<i>Rhododendron williamsianum</i>	
<i>Rhododendron yakushimanum</i>	Yak rhododendron
<i>Rhododendron yedoensis</i>	Korean azalea
<i>Rhodotypos scandens</i>	Black jet bead
<i>Rhus aromatica</i>	Fragrant sumac
<i>Rhus cotinus</i>	Smoke bush
<i>Rhus glabra</i>	Native staghorn sumac
<i>Rhus trilobata</i>	Three leaf sumac
<i>Ribes cereum</i>	Wax currant
<i>Ribes lobbii or marshallii</i>	Gummy gooseberry
<i>Ribes marshallii</i>	Hupa gooseberry
<i>Ribes sanguineum</i>	Red flowering currant
<i>Ribes sanguineum 'White Icicle'</i>	'White Icicle' flowering current
<i>Rosa canina</i>	Dog rose
<i>Rosa gymnocarpa</i>	Bald hip rose
<i>Rosa moyesii</i>	
<i>Rosa rel: omeiensis</i>	Omei rose
<i>Rosa rubrifolia</i>	Red leaf rose
<i>Rubus neomexicanus</i>	New Mexico raspberry
<i>Rubus parviflora</i>	Thimble berry
<i>Rubus spectabilis</i>	Salmon berry
<i>Salix gracilis?</i>	Meadow willow
<i>Sambucus nigra?</i>	Elderberry
<i>Sambucus racemosa</i>	Red elderberry
<i>Sarcococca confusa</i>	Winter box

Botanical Name	Common Name
<i>Shepherdia argentea</i>	Silver buffaloberry
<i>Skimmia japonica</i>	Japanese skimmia
<i>Sorbaria kirilovii</i>	Giant false spirea
<i>Sorbaria sorbifolia</i>	Ural false spirea
<i>Spartium junceum</i>	Spanish broom
<i>Spiraea bella</i>	Pretty flowered spirea
<i>Spiraea betulifolia lucida</i>	Birch leaf spirea
<i>Spiraea japonica</i>	Japanese spirea
<i>Spiraea nipponica</i>	Snowmound Japanese spirea
<i>Spiraea x pyramidata</i>	Pyramid spirea
<i>Stachyurus chinensis</i>	Chinese stachyurus
<i>Stachyurus praecox</i>	Early Spiketail
<i>Staphylea colchica</i>	Cochis bladder nut
<i>Stephanandra tanakae</i>	Japanese Stephanandra
<i>Stranvaesia (now Photinia)</i>	Chinese stranvaesia
<i>Symphoricarpos albus</i>	Snowberry
<i>Symphoricarpos mollis</i>	Snowberry
<i>Syringa laciniata</i>	Cutleaf lilac
<i>Syringa meyeri</i>	Korean lilac
<i>Syringa pinnatifolia</i>	Lilac
<i>Syringa reticulata</i>	Japanese tree lilac
<i>Taxus chinensis</i>	Chinese yew
<i>Thuopsis dolabrata nana</i>	Dwarf Hiba Arborvitae
<i>Trochodendron aralioides</i>	Wheel tree
<i>Vaccinium padifolium</i>	Whortleberry
<i>Vaccinium parvifolium</i>	Red huckleberry
<i>Viburnum cinnamomifolium</i>	Cinnamon viburnum
<i>Viburnum davidii</i>	David's viburnum
<i>Viburnum ellipticum</i>	Common viburnum
<i>Viburnum odoratissimum</i>	Sweet viburnum
<i>Viburnum propinquum</i>	Chinese viburnum
<i>Viburnum rhytidophyllum</i>	Leather leaf viburnum
<i>Viburnum sieboldii</i>	Siebold viburnum
<i>Viburnum x praguense</i>	Prague viburnum
<i>Vitex agnus-castus</i>	Chaste-tree
<i>Weigela floribunda</i>	Weigela
<i>Weigela praecox</i>	Variegated weigela
<i>Xanthorrhiza apiifolia (simplicifolia)</i>	Yellow root
<i>Xanthoxylum americanum</i>	Prickly ash
<i>Yucca filamentosa</i>	



Pinus sylvestris

Perennials and Groundcovers

Botanical Name	Common Name
<i>Adiantum aleuticum (pedatum)</i>	Maidenhair fern
<i>Adiantum capillis-veneris</i>	Common maidenhair fern
<i>Adiantum venustum</i>	Maidenhair fern
<i>Allium flavum</i>	Small yellow onion
<i>Anemone hupehensis</i>	Japanese anemone/Sept. anemone
<i>Aquilegia eximia</i>	Serpentine columbine
<i>Arum italicum</i>	Lords and Ladies
<i>Aruncus aethusifolius</i>	Miniature goats beard
<i>Asarum caudatum</i>	Wild ginger
<i>Asplenium ceterach</i>	Scale fern
<i>Asplenium scolopendrium</i>	Harts tongue
<i>Baptisia</i>	Wild indigo
<i>Bergenia strachyi</i>	Chinese bergenia
<i>Blechnum spicant</i>	Deer fern
<i>Bletilla striata?</i>	Hardy orchid
<i>Camassia quamash</i>	Camas
<i>Campanula carpatica</i>	Carpathian bellflower
<i>Campanula sp.</i>	Campanula
<i>Carex grayii</i>	Gray's sedge
<i>Carex matthewsii?</i>	
<i>Carpenteria californica</i>	Bush anemone
<i>Chionodoxa luciliae</i>	Glory of the Snow
<i>Comptonia peregrina</i>	Sweet fern
<i>Coptis occidentalis</i>	Goldthread
<i>Cortaderia richardii?</i>	Toe toe grass
<i>Corydalis scouleri</i>	Western corydalis
<i>Crococsmia masoniorum</i>	Montbretia
<i>Cyclamen hederifolium</i>	Hardy cyclamen
<i>Cystopteris fragilis</i>	Fragile Fern
<i>Dianthus superbus</i>	Large pink
<i>Dierama pulcherrima</i>	Fairy wand
<i>Epimedium perralderianum</i>	Bishop's hat
<i>Erythronium revolutum</i>	Pink fawnlily
<i>Festuca californica</i>	California fescue
<i>Gaultheria procumbens</i>	Wintergreen
<i>Geranium x cantabrigense</i>	Bloody cranesbill
<i>Helleborus sp.</i>	Lenten rose
<i>Heuchera chlorantha</i>	Tall alum root
<i>Hosta sp.</i>	Hosta
<i>Iliamna rivularis</i>	Streambank hollyhock
<i>Iris delavayi</i>	Long scape iris
<i>Iris douglasiana</i>	Douglas iris
<i>Lewisia columbiana</i>	Columbia bitterroot
<i>Lewisia cotyledon</i>	Siskiyou lewisia
<i>Leycesteria formosa</i>	Himalayan honeysuckle
<i>Ligularia przewalskii</i>	Shavalki's ligularia
<i>Ligularia sp.</i>	
<i>Linaria triornithophora</i>	Three bird toadflax
<i>Lithodora diffusa</i>	Lithodora
<i>Matteuccia struthiopteris</i>	Ostrich fern
<i>Mimulus (Diplacus) aurantiacus</i>	Orange bush money flower
<i>Miscanthus sinensis</i>	Chinese silvergrass
<i>Molinia caerulea</i>	Purple moor grass
<i>Oxalis adenophylla</i>	Chilean oxalis
<i>Oxalis oregana</i>	Wood sorrel
<i>Penstemon cardwelli</i>	Beardtongue
<i>Petasites frigidus</i>	Coltsfoot
<i>Phacelia bolanderi</i>	Bolander's scorpionweed
<i>Phuopsis stylosa</i>	Caucasian crosswort
<i>Polygonatum sp.</i>	Solomon's seal
<i>Polypodium scouleri</i>	Scouler's polypody, coast licorice fern
<i>Polystichum andersonii</i>	Anderson's swordfern
<i>Pulmonaria angustifolia</i>	Blue lungwort
<i>Rodgersia podophylla</i>	Rodgersia
<i>Romneya coulteri</i>	Matilija poppy

Botanical Name	Common Name
<i>Rubus tricolor</i>	Creeping bramble
<i>Scilla peruviana</i>	Giant scilla
<i>Sedum spathifolium</i>	Yellow stonecrop
<i>Smilacina stellata</i>	Starry false lilly of the valley
<i>Stipa capillata?</i>	Needle grass
<i>Suksdorfia?</i>	Suksdorfia
<i>Tellima grandiflora</i>	Fringe cup
<i>Vancouveria hexandra</i>	Inside-out flower
<i>Vancouveria planipetala</i>	Evergreen inside-out flower
<i>Vaccinium vitis-idaea</i>	Lingonberry

Bamboo

<i>Phyllostachys nigra</i>	Black bamboo
----------------------------	--------------

Vines

Botanical Name	Common Name
<i>Actinidia chinensis</i>	Chinese gooseberry 'Kiwi'
<i>Actinidia kolomicta</i>	Arctic beauty kiwi
<i>Akebia quinata</i>	Chocolate vine
<i>Akebia trifoliata</i>	Chocolate vine
<i>Aristolochia sp.</i>	Dutchman's pipe
<i>Aristolotelia chilensis</i>	Chilean wineberry
<i>Billardiera longiflora</i>	Climbing blueberry
<i>Clematis alpine (or C. montana)</i>	
<i>Hydrangea anomala subsp. petiolaris</i>	Climbing hydrangea
<i>Lonicera ciliosa</i>	Honeysuckle
<i>Smilax sp.</i>	
<i>Wisteria</i>	Wisteria



Sequoiadendron giganteum

