

EARTHQUAKE CLEAN UP

Cleaning up your home after an earthquake can be a challenge. The following information will help get you started. Please save this information so that you can be prepared.

- **Keep household garbage, recycling, building debris and vegetative debris separate. This is extremely important!**
- **Securely containerize all household garbage in plastic bags or cans and place at the curb on your scheduled collection day.**
- **Please be patient! Collection of household garbage will be a top priority and will resume once dangerous conditions subside. DO NOT mix your household garbage with other disaster debris!**
- **Refrigerators must be emptied and doors removed, or secured with duct tape.**
- **See other side for debris sorting suggestions**

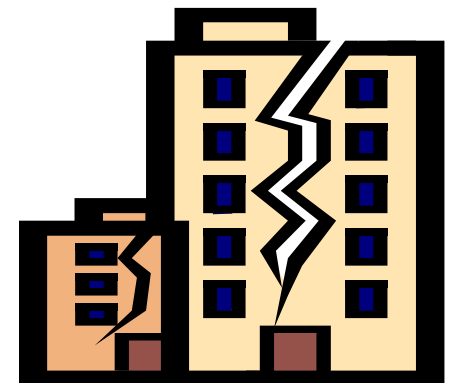
Additional Information is available at:

City Website: www.shorelinewa.gov

City Phone: (206) 801-2700

Cleanscapes Debris Hotline: (206) 763-4444

King County Emergency Management Website: www.kingcounty.gov/safety/prepare.aspx



What to Do With Disaster Debris



17500 Midvale Ave N
Shoreline, WA 98133
(206) 801-2700

Sort into Categories

