



Intersection Project: 160th Street, Greenwood and Innis Arden

September 25, 2024

Agenda

Introductions

Project Background

Timeline

Intersection Design

Project Impacts

Safety during construction

Using the Roundabout

Project Background

- The Shoreline Community College campus housing project triggered transportation impact mitigation.
- The City and College collaborated on a mitigation agreement, which included signalized intersection versus roundabout intersection options analysis.
- Two public outreach efforts have occurred so far:
 - May 2019
 - July 2019
- **A roundabout was selected as the preferred concept in November 2019 based on 7 criteria.**
- The project is primarily funded by the College.



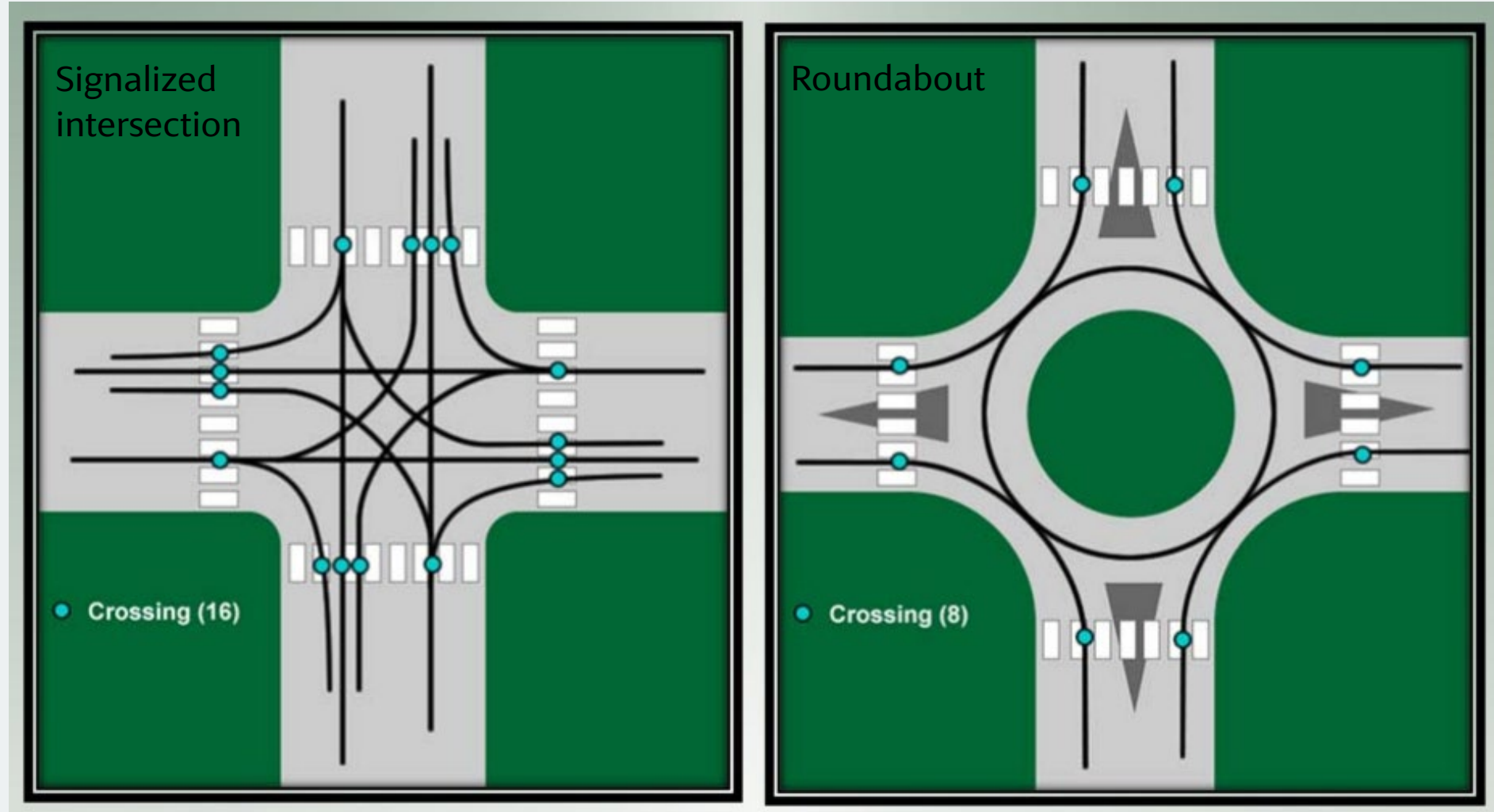
More history at: shorelinewa.gov/160intersection

Roundabout Safety

Roundabouts result in 78% less fatal/injury crashes compared to signalized intersections. This is mainly attributed to:

- less conflict points
- geometry requires lower speeds

Pedestrian Conflicts:



Other Active Transportation Safety Features

- Pedestrian activated flashing beacons will be installed at crossings.
- Street lighting improvements.
- Fills gaps in sidewalk.
- Improves bike connectivity (though future work would be needed to fully realize continuous bike facilities).

Visit similar roundabouts nearby:

- Edmonds: 5 Corners (84th Ave W/Main St/Bowdoin Way)
- Shoreline: 8th Ave NE/NE 185th St



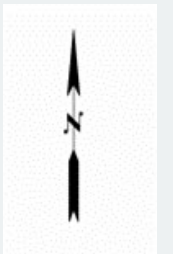
Timeline

Agreement Constraints:

Substantial Completion required by January 2026, aligned with mitigation requirements.







Intersection Design



Tree Impacts

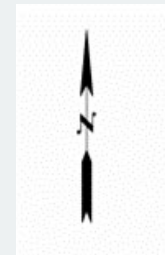


Legend

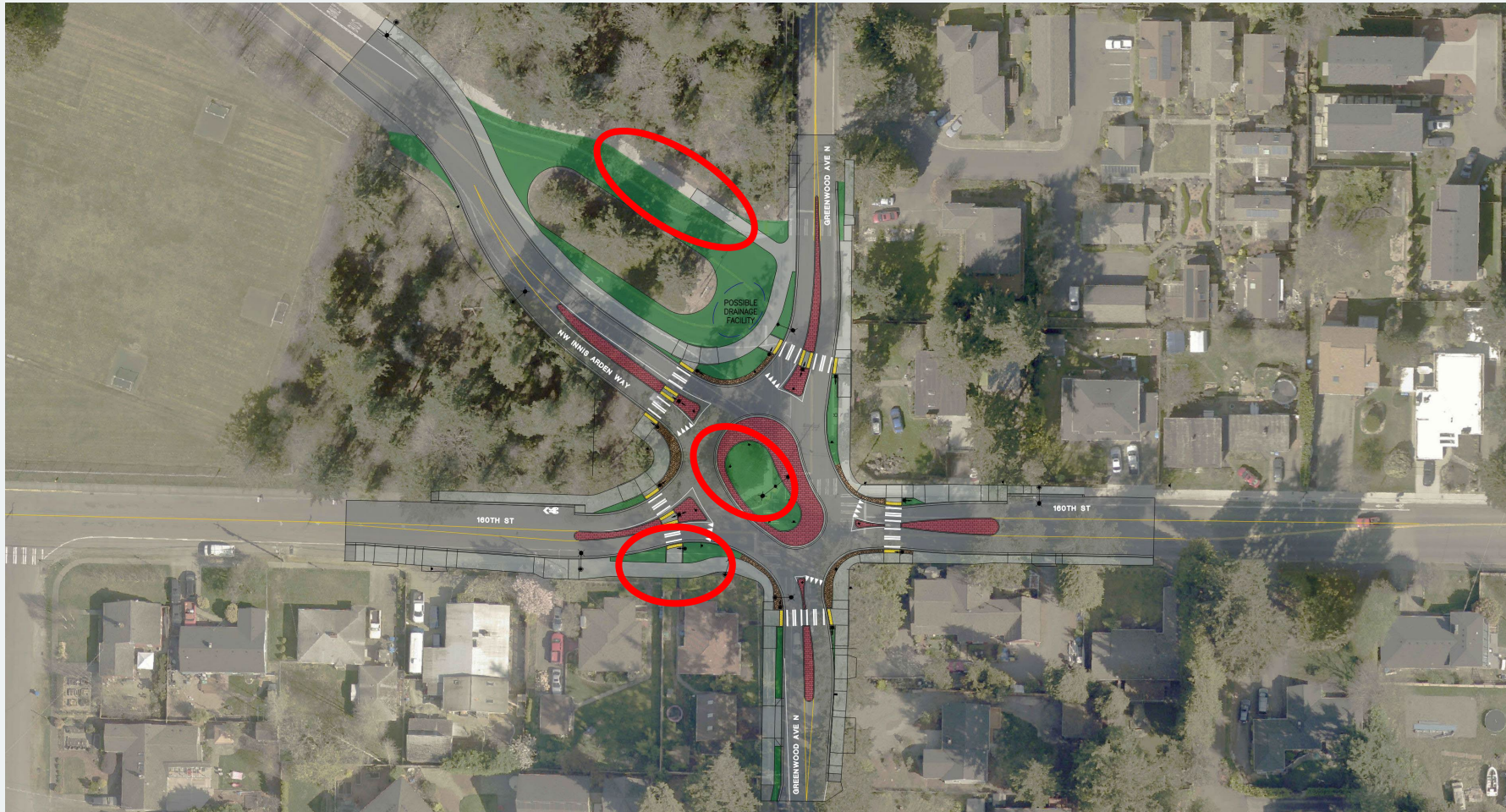
-  Trees protected, not impacted
-  Trees protected, possible impacts
-  Trees to be removed
-  Trees in poor condition or dead

Tree Removals

- 11-14 trees



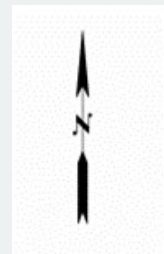
Tree Replacement



Tree Replacements

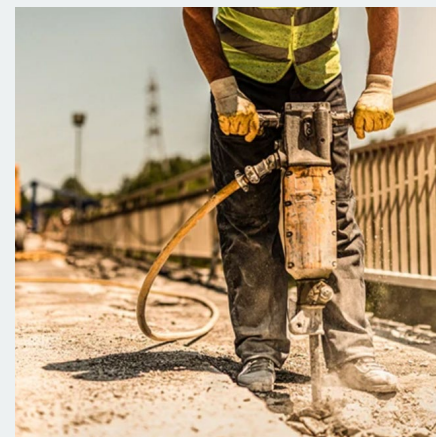
- Center Island
- Southwest shoulder
- Innis Arden north of "island"

- Maximizing tree replacement w/ utility constraints

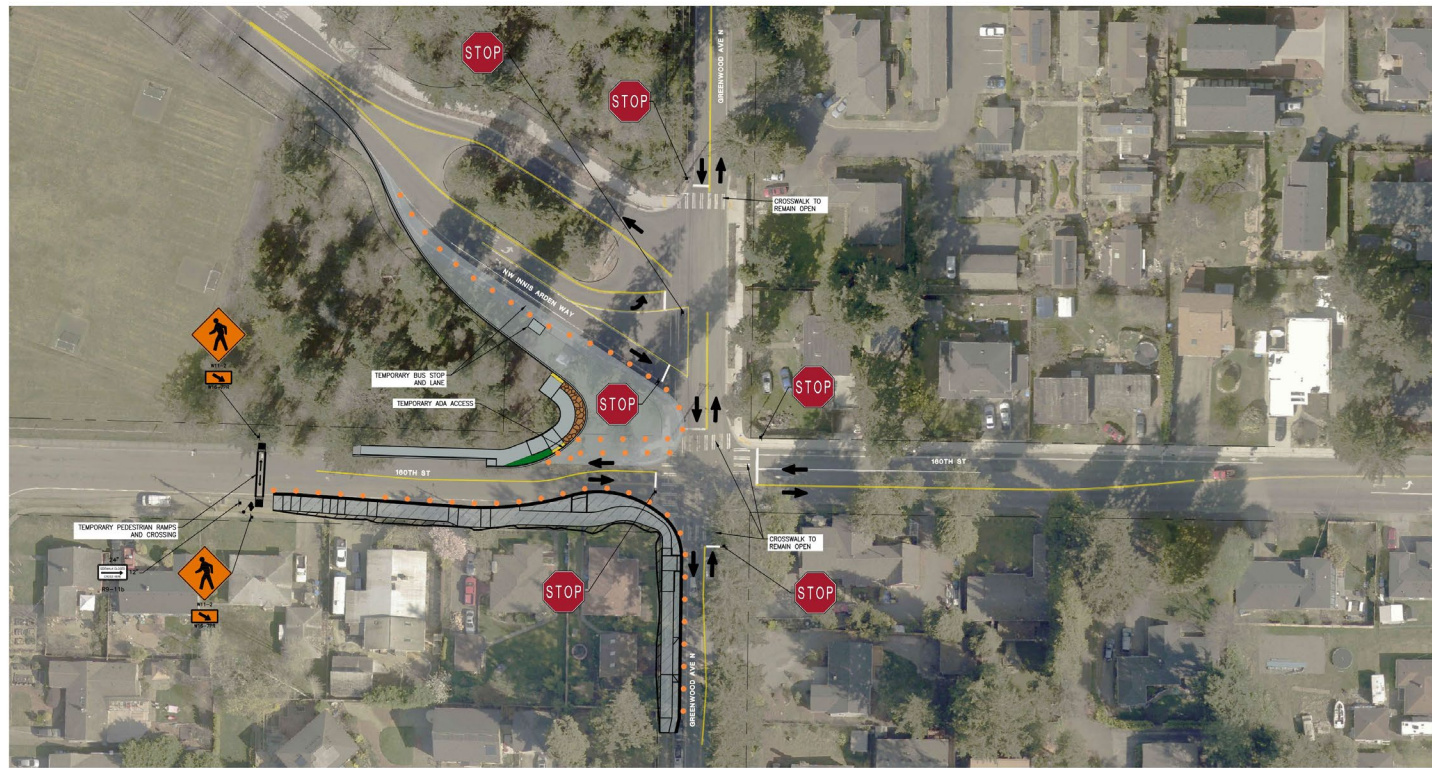


Construction Impacts

- Timeline
 - 6.5 Months for contract length,
 - ~ 4 Months for corrections, minor work, electrical startup, etc.
 - 7:00 to 9:00 allowed by City codes,
 - Typical is business hours, 7:00 to 5:00
 - Option for occasional nighttime work
- Impacts
 - Noise and equipment exhaust
 - Dust – contractor to water down open soils
 - Equipment and Materials Staging
 - Temporary Driveway Shutdowns
 - Temporary ped. pathwasy
- Traffic
 - Long periods of flagging and single-lane access.
 - Use other routes if possible during active construction



Safety During Construction



- Build in phases
 - Build out each corner curb and sidewalk in sequence
 - Last step is to build center island and roadway
- Keep pedestrian access open
- Elementary School Safety

PHASE 2: 160th and Greenwood Roundabout

ReidMiddleton

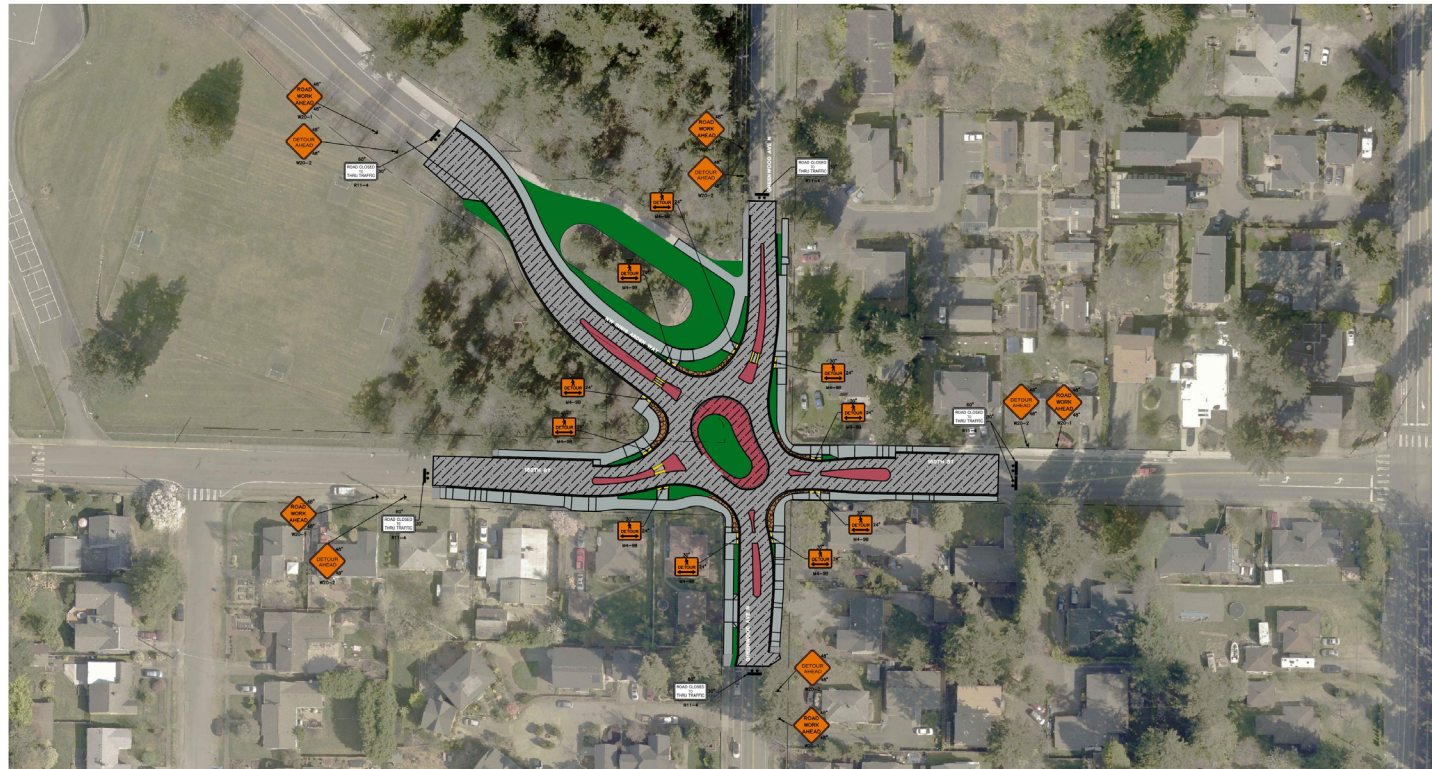
728 134th Street SW Suite 200
Everett, Washington 98204
Ph: 425 741-3800

Shoreline, WA

September 2024

Safety During Construction

- Vehicle Traffic
- Open, but slow due to reduced lane widths and occasional flaggers.
- Option for full shut down for periods to speed up
- Option also for night work
- We want feedback on shutdown options



Roundabout Navigation

Users only yield to one other movement at a time.

Drivers first yield to crossing pedestrians, then pull forward to the roundabout entry point and at that point, only need to yield to conflicting traffic in the circulating roadway.

Similarly, pedestrians can focus only on one direction of traffic at a time. They do not have to worry about right turns, left turners, or red light running through movements like they would at a signalized intersection.

This video shows how pedestrians navigate a roundabout:

https://youtu.be/MMFy1NJv9_k

Bicyclists can navigate roundabouts like a vehicle or a pedestrian.

For additional information, please visit our webpage at:

<https://www.shorelinewa.gov/government/departments/public-works/transportation-services/roundabouts>

Questions

Thank you

