

SCALE IN FEET

KEY NOTES:

KEY	NOTE:	DETAIL/SHEET
1	12' SHARED-USE PATHWAY	R/C07
2	TEMPORARY ASPHALT TRANSITION	W/C08
3	TYPE A CURB AND GUTTER	D/C06
4	CB #2A TYPE I W/ RECTANGULAR VANED GRATE & STORM DRAIN MEDALLION RIM 459.12 12" IE (E) 457.09	E/C06 F/C06 O/C07 S/C07
5	EX TEE (AT MAIN) WILL BE UTILIZED FOR PROPOSED DEVELOPMENT. EX PIPE TO BE REMOVED (UNDER SEPARATE PERMIT) 8" IE 450.73	CC/C09
6	32 LF 6" SSS @ 2.00% MIN TO CONNECT TO EX SEWER MAIN TEE	T/C07
7	6" SSSCO RIM 461.04 6" IE 452.20 ON-SITE SEWER POINT OF COMPLIANCE (INSTALLED UNDER DEV22-1692)	
8	115 LF 12" CPEP SD @ 1.22%	T/C07
9	SAWCUT AND MATCH EG (TYP)	
10	4' SIDEWALK TRANSITION	
11	CONNECT PIPE TO EX CB @ 455.42	
12	FLEXIBLE PAVEMENT PATCHING. MATCH PAVEMENT SECTION IN DETAIL Q/C07 OR MATCH EX PAVEMENT SECTION IF GREATER	G/C06 Q/C07
13	15.5' ROW DEDICATION	
14	14' AMENITY ZONE W/ AMENDED SOILS	N/C07, P/C07
15	9 LF 12" CPEP SD @ 2.22%	
16	NOT USED	
17	CURB TRANSITION TO EG	
18	EX POWER POLE & STREET LIGHT TO BE RELOCATED PER TRAFFIC ENGINEER	
19	BIORETENTION FACILITY #1 47L x 1' W BOTTOM 53L x 7' W TOP 6" FREEBOARD 3H:1V MAX SIDE SLOPE BOTTOM ELEVATION TO BE 1'-4" BELOW ADJACENT FL ELEVATION	BF/C08
20	NEW 20' WIDE DRIVEWAY W/ 2.5' WINGS	A/C06
21	NOT USED	
22	INSTALL 1" DEEP 18" WIDE INLET TO BIORETENTION W/ 24" WIDE STREAMBED COBBLES	V/C08
23	ADJUST RIM OF EX CB TO FG & INSTALL SOLID LOCKING LID	C/C06
24	CONCRETE INLET (TYP) W/ SOLID CONCRETE LID & STORM DRAIN MEDALLION RIM 459.30 12" IE (N) 455.55 12" IE (W) 456.00 12" IE (E) 455.55 12" IE (S) 455.55	E/C06 F/C06 O/C07 S/C07
25	8" PERMEABLE SIDEWALK	B/C06 R/C07
26	EX WATER SERVICE TO BE ABANDONED (AT MAIN) BY SPU AT OWNERS EXPENSE. REUSE METER IF SIZED CORRECTLY (DETERMINED BY ON-SITE MEP AND SPU). SEE SITE DEVELOPMENT PLANS (DEV22-1692) FOR FURTHER WATER SYSTEM DETAILS	
27	RESET EX FIRE HYDRANT ON NEW CONC SHEAR BLOCK. TO BE COORDINATED WITH SPU. INSTALL ETHAFOAM PAD BETWEEN EX FIRE HYDRANT LINE AND PROPOSED STORMWATER MAIN	
28	5' AMENITY ZONE W/ AMENDED SOILS	N/C07 P/C07
29	NEW WATER SERVICE CONNECTION BY SPU (UNDER SEPARATE PERMIT) (TYP)	
30	ROW TREE. SEE LANDSCAPE PLANS FOR ADDITIONAL INFORMATION. ADD ROOT BARRIERS AS NEEDED (TYP)	N/C07
31	CB #1 TYPE I W/ RECTANGULAR VANED GRATE & STORM DRAIN MEDALLION RIM 461.95 12" IE (S) 456.95	E/C06 F/C06 O/C07 S/C07
32	EX SIDE SEWER TEE TO BE REUSED & PIPE TO BE REPLACED (UNDER SEPARATE PERMIT)	
33	EX ROW TREE TO BE REMOVED. LOCATION APPROXIMATE PER GIS MAPPING	
34	67 LF 12" CPEP SD @ 3.66%	
35	PEDESTRIAN LIGHTING JUNCTION BOXES & CONDUIT PER TRAFFIC ENGINEER (TYP)	
36	6" SSSCO RIM 456.36 6" IE 445.92 ON-SITE SEWER POINT OF COMPLIANCE (INSTALLED UNDER DEV 22-1692)	

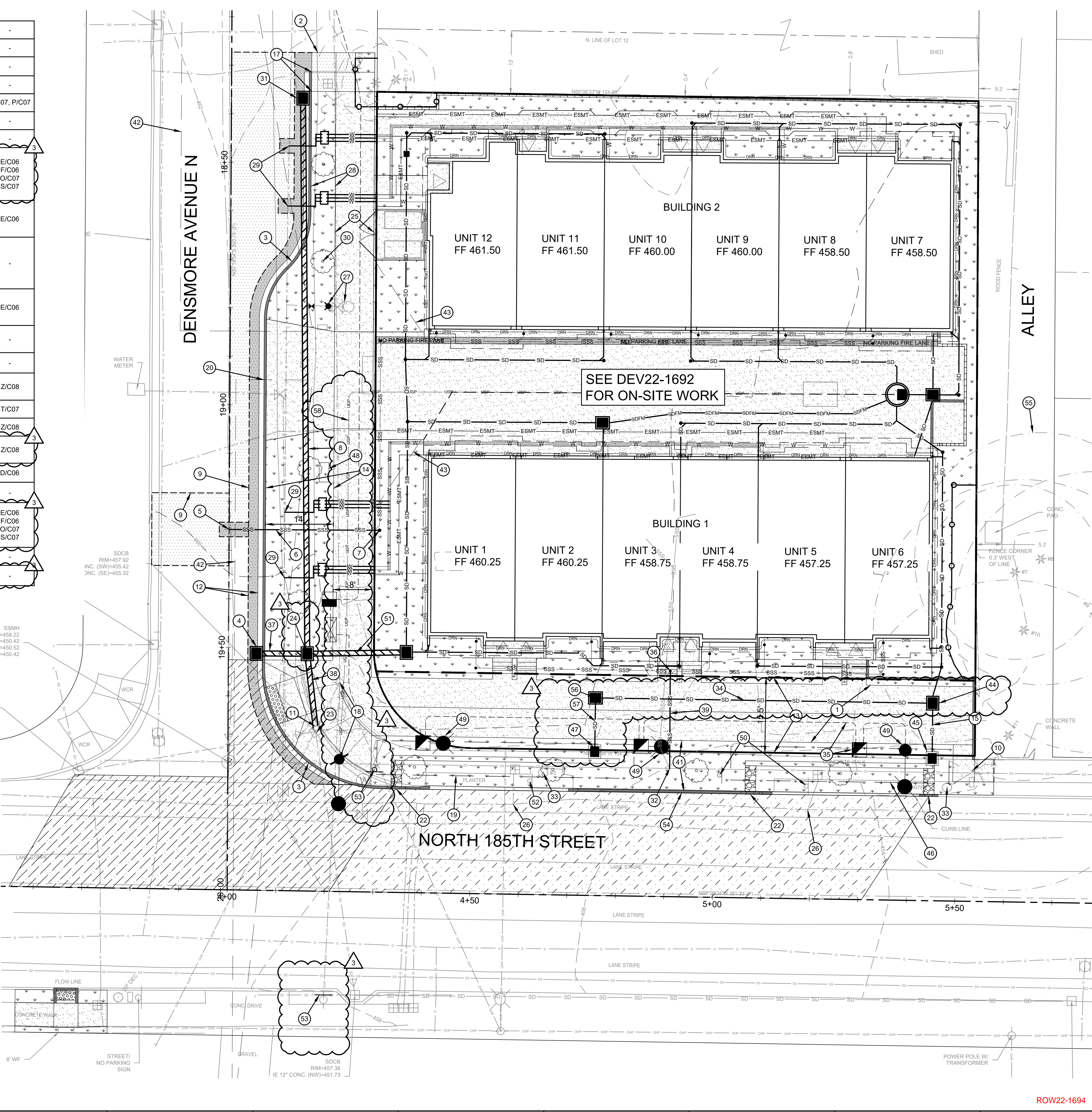
37	11 LF 12" DI SD @ 10.40%	
38	16 LF 12" DI SD @ 0.80% MIN	
39	20 LF 6" SSS @ 2.00% MIN TO CONNECT TO EX SEWER MAIN TEE	
40	NOT USED	
41	±10.5' AMENITY ZONE W/ AMENDED SOILS	N/C07, P/C07
42	VEHICULAR SIGHT LINES PER EDM 13.8	
43	PEDESTRIAN SIGHT LINES PER EDM 13.8	
44	CONCRETE INLET (TYP) W/ SOLID CONCRETE LID RIM 454.41 12" IE (W) 449.80 12" IE (S) 449.80 6" IE (N) 449.80 (OVERFLOW)	E/C06 F/C06 O/C07 S/C07
45	CB #3 TYPE I OVERFLOW W/ BEEHIVE GRATE RIM 453.03 12" IE (NE) 450.00	E/C06
46	BIORETENTION FACILITY #2 39L x 1' W BOTTOM 45L x 7' W TOP 6" FREEBOARD BOTTOM ELEVATION 1'-4" BELOW ADJACENT FL ELEVATION	
47	CB #4 TYPE I OVERFLOW W/ BEEHIVE GRATE RIM 455.36 12" IE (NE) 452.40	E/C06
48	LOCATION OF MAILBOX CLUSTER. SEE ARCHITECTURAL PLANS FOR DESIGN/LOCATION.	
49	PEDESTRIAN SCALE LIGHTING PER TRAFFIC ENGINEER (TYP)	
50	APPROXIMATE LOCATION OF EX PEDESTRIAN CROSSING SIGN. SIGN TO BE RELOCATED INTO AMENITY ZONE.	Z/C08
51	20 LF 12" CPEP SD @ 0.50% MIN	T/C07
52	EX "NO PARKING" SIGN TO BE REMOVED	Z/C08
53	PROPOSED "NO PEDESTRIAN CROSSING" (R9-3) SIGNS. SIGNS TO BE FACING N 185TH STREET	Z/C08
54	PULL HEIGHT CURB TO REPLACE EX DRIVEWAY APRON	D/C06
55	CRITICAL ROOT ZONE (PER PROJECT ARBORIST, TYP)	
56	CONCRETE INLET (TYP) W/ SOLID CONCRETE LID. RIM 456.82 12" IE (SW) 451.81 12" IE (E) 451.81	E/C06 F/C06 O/C07 S/C07
57	8 LF 12" CPEP SD @ 3.66%	
58	LOCATION OF UGP PRIMARY (DESIGN BY SCL)	

LEGEND:

	FULL DEPTH ASPHALT
	CONCRETE
	CONCRETE ROADWAY
	LANDSCAPE (SEE DETAIL P/C07)
	PERMEABLE PAVEMENT SURFACING (SEE DETAIL R/C07)
	GRAVEL
	AREA TRIBUTARY TO BIORETENTION FACILITY #1
	AREA TRIBUTARY TO BIORETENTION FACILITY #2
	ASPHALT GRIND AND OVERLAY

GENERAL NOTES:

- ENSURE PROPER CLEARANCES BETWEEN STORM PIPE AND PROPOSED UTILITIES. WATER/GAS SERVICE PIPES ARE TO BE 12" VERTICAL CLEAR (ABOVE OR BELOW STORM). CLEARANCE MAY BE REDUCED TO 6" IF ETHAFOAM PAD USED BETWEEN STORM AND WATER/GAS AT CROSSING. ELECTRICAL SERVICES ARE TO BE 12" VERTICAL CLEAR (ABOVE OR BELOW STORM).
- PROVIDE 12" MIN VERTICAL CLEARANCE BETWEEN STORM (ABOVE) AND SEWER (BELOW). IF SEWER TO BE ABOVE STORM, PROVIDE 18" MIN VERTICAL CLEARANCE. IF PREVIOUSLY STATED REQUIREMENTS CANNOT BE MET, MINIMUM 6" VERTICAL CLEARANCE IS ACCEPTABLE IF PIPE SLEEVE AND ETHAFOAM PAD ARE UTILIZED.
- ROADWAY CHANNELIZATION, IF REMOVED OR ALTERED, TO BE REPLACED IN KIND PER CITY OF SHORELINE STANDARD DETAILS 401, 403, & 410.



DCOG civil structural

CALL 811
2 BUSINESS DAYS
BEFORE YOU DIG
(UNDERGROUND UTILITY LOCATIONS ARE APPROX.)

BENJAMIN J. IDOL
REGISTERED PROFESSIONAL ENGINEER
No. 22100
Exp. 04/26/2026
185TH ST
SEATTLE, WA 98104

BASE MAP TOPOGRAPHY PROVIDED BY OTHERS. DCOG CANNOT BE HELD LIABLE FOR ACCURACY. CONTRACTOR SHALL FIELD VERIFY GRADES, UTILITIES, & ALL OTHER EX FEATURES & CONDITIONS. IF CONDITIONS ARE NOT AS SHOWN, ALL PLANS CANNOT BE CONSTRUCTED AS SHOWN. CONTACT DCOG PRIOR TO CONSTRUCTION.

OWNER:
1702 SHORELINE, LLC
6513 132ND AVE NE #200
KIRKLAND, WA 98033

PROJECT:
1702 & 1710 N 185TH ST
SHORELINE, WA 98133
FRONTAGE IMPROVEMENT PLAN

PROJ. MANAGER: JR
DESIGNED BY: JR
DRAWN BY: MH
CHECKED BY: BI

SCALE: AS SHOWN
DATE: 4/26/2024
REV: 3
SHEET OF: 9

SHEET NUMBER
C02

ROW22-1694

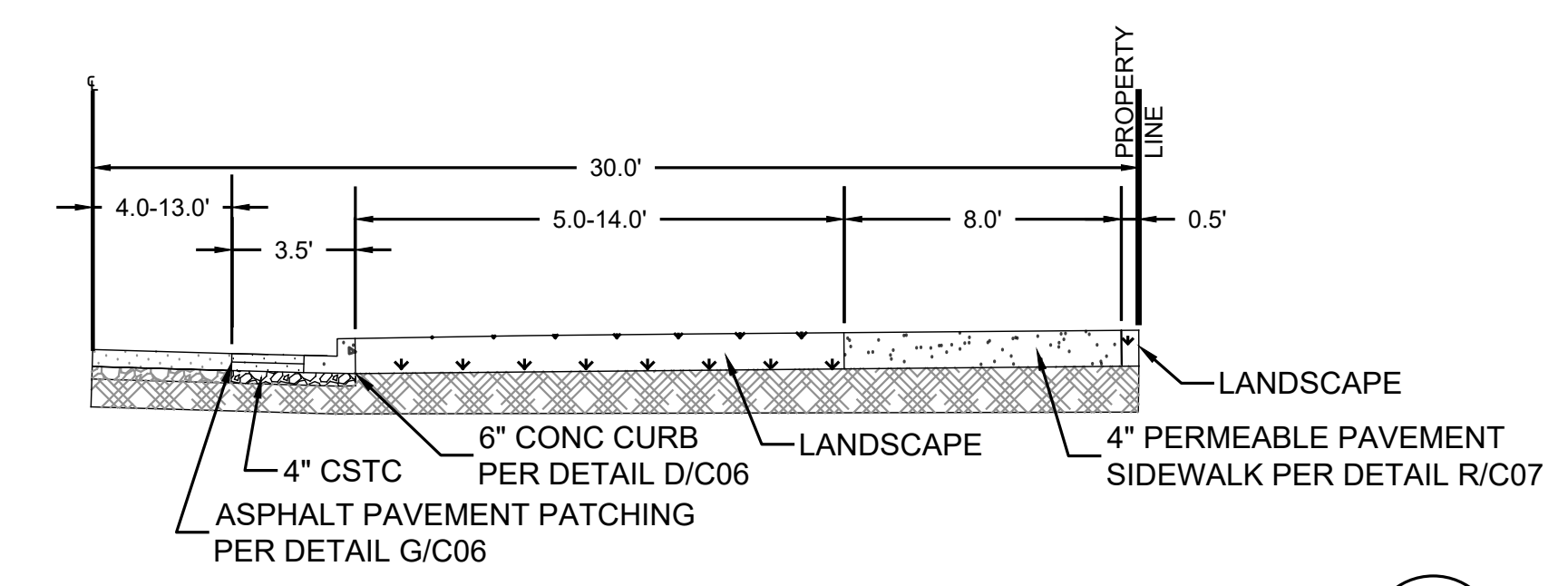
CAD FILE NUMBER: P:\CLIENTS-CIVIL\WORKS\1702 & 1710 N 185TH ST SHORELINE\DRAWING\ROW\1702 & 1710 N 185TH ST SHORELINE_ROW PERMIT.DWG
 LAST MODIFIED BY: JREYNES - SAVE DATE: 4/26/2024 9:59 AM - SHEET SET: 1702 & 1710 N 185TH ST SHORELINE_ROW PERMIT - ORIGINAL SHEET SIZE: ARCH FULL BLEED D (24.00 X 36.00 INCHES)
 AUTOCAD VERSION: CIVIL 3D 2017

ABBREVIATIONS:

- BM = BENCHMARK
- BP = BIOPLANTER
- BOTS = BOTTOM OF STAIR
- CB = CATCH BASIN
- CL = CENTER LINE
- CONC = CONCRETE
- CW = CONCRETE WALK
- GR = GRADE
- EL = ELEVATION
- EOP = EDGE OF PAVEMENT
- EX = EXISTING
- EG = EXISTING GRADE
- FF = FINISHED FLOOR
- FG = FINISHED GRADE
- FL = FLOWLINE
- IE = INVERT ELEVATION
- LSCAPE = LANDSCAPING
- LT = LEFT
- M.I.C. = MONUMENT IN CASE
- NO. = NUMBER
- PC = POINT OF CURVE
- PT = POINT OF TANGENT
- RT = RIGHT
- STA = STATION
- STD = STANDARD
- TOC = TOP OF CURB
- TOP = TOP OF PAVEMENT
- TOPS = TOP OF STAIR
- TYP = TYPICAL

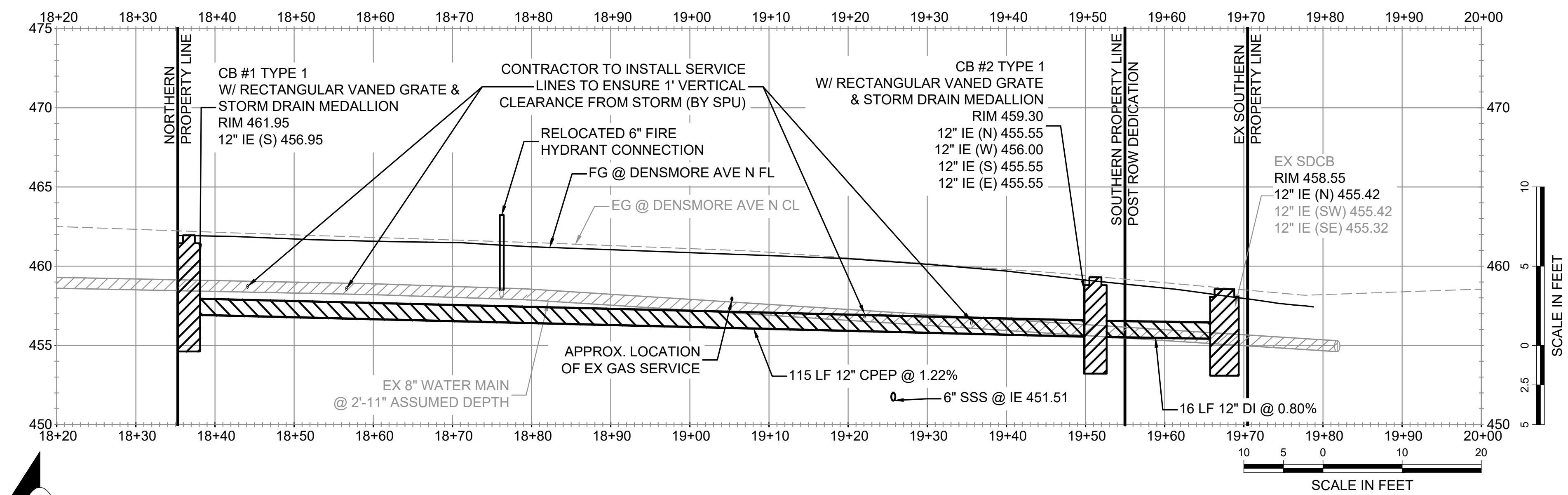
LEGEND:

- ASPHALT
- CONCRETE
- CONCRETE ROADWAY
- LANDSCAPE (SEE DETAIL P/C07)
- PERMEABLE PAVEMENT SURFACING (SEE DETAIL R/C07)
- GRAVEL

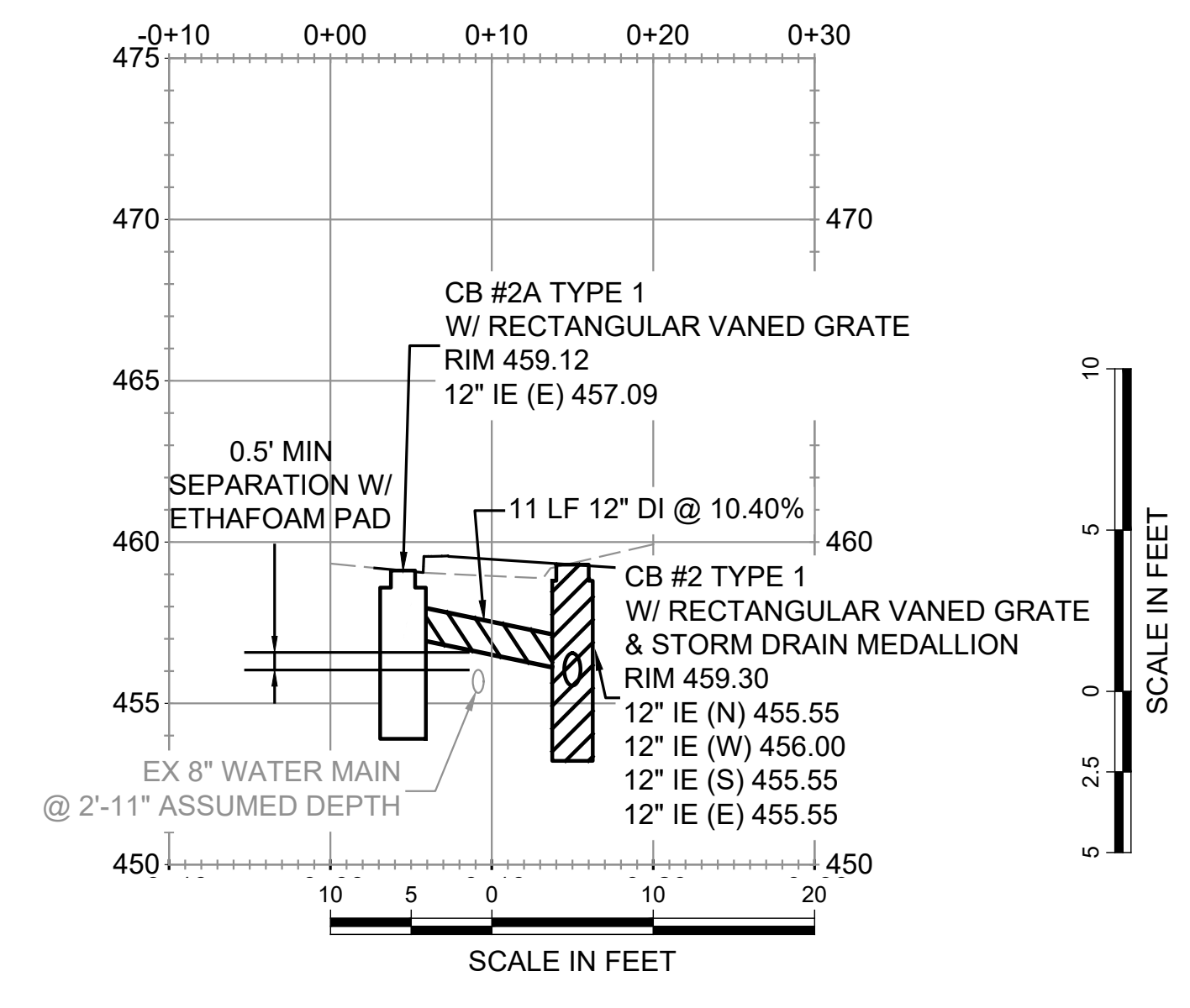


ROADWAY CROSS SECTION - DENSMORE AVE N (C-C) C03
NOT TO SCALE

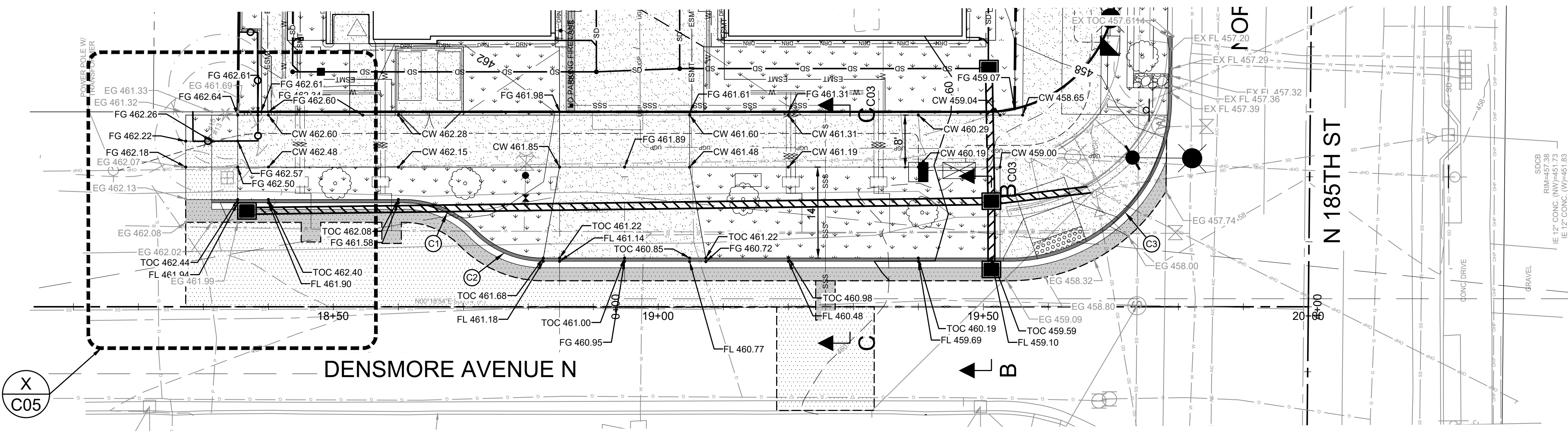
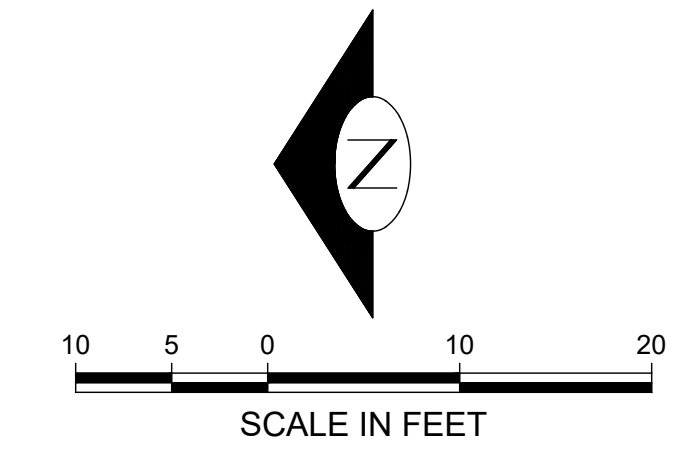
PROFILE NOTE:
EX UTILITY SIZES, DEPTHS, AND LOCATIONS ARE APPROXIMATE AND SHALL BE CONFIRMED BY THE CONTRACTOR PRIOR TO INSTALLATION OF THE PROPOSED STORM MAIN SYSTEM.



DENSMORE AVE N - GRADING & STORM MAIN EXTENSION PROFILE
SCALE: H: 1"=10'; V: 1"=5'



EAST TO WEST - GRADING & STORM MAIN EXTENSION PROFILE (B-B) C03
SCALE: H: 1"=10'; V: 1"=5'



DENSMORE AVENUE N - GRADING PLAN
SCALE AS SHOWN

DENSMORE AVENUE N - GRADING PLAN

CURVE DATA TABLE			
RADIUS	LENGTH	DELTA	
15'	11.93'	45°34'23"	
PC STA	PC OFFSET	PC ELEV [FL]	
18+60.40	16.04' LT	461.57'	
1/4 ELEV [FL]	1/2 ELEV [FL]	3/4 ELEV [FL]	
461.55'	461.52'	461.50'	
PT STA	PT OFFSET	PT ELEV [FL]	
18+71.59	11.5' LT	461.47'	
RADIUS <th>LENGTH</th> <th colspan="2">DELTA</th>	LENGTH	DELTA	
15'	11.93'	45°34'23"	
PC STA	PC OFFSET	PC ELEV [FL]	
18+71.59	11.50' LT	461.47'	
1/4 ELEV [FL]	1/2 ELEV [FL]	3/4 ELEV [FL]	
461.40'	461.32'	461.24'	
PT STA	PT OFFSET	PT ELEV [FL]	
18+82.30	7' LT	461.18'	
RADIUS <th>LENGTH</th> <th colspan="2">DELTA</th>	LENGTH	DELTA	
25'	39.05'	89°29'52"	
PC STA	PC OFFSET	PC ELEV [FL]	
19+53.99	7' LT	459.17'	
1/4 ELEV [FL]	1/2 ELEV [FL]	3/4 ELEV [FL]	
458.46'	457.86'	457.53'	
PT STA	PT OFFSET	PT ELEV [FL]	
19+78.99	31.78' LT	457.42'	

REVISION	BY	DATE	REVISIONS PER CITY COMMENTS #1	REVISIONS PER CITY COMMENTS #2	REVISIONS PER CITY COMMENTS #3
1	NA	03/31/23			
2	BI	08/30/23			
3	BI	04/25/24			

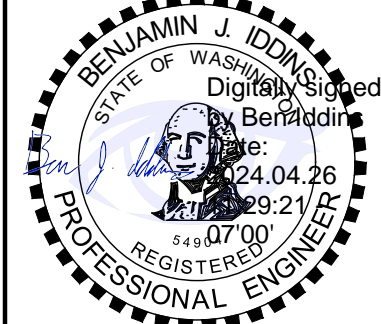
LEED ACCREDITED PROFESSIONALS & THE RELATED ARCHITECTS, ENGINEERS, PLANNERS, AND DESIGNERS OWNED BY THE U.S. GREEN BUILDING COUNCIL & ARE AWARDED TO INDIVIDUALS UNDER LICENSE BY THE GREEN BUILDING CERTIFICATION INSTITUTE.

LEED AP

9706 4th Ave NE
Suite 300
Seattle, WA 98115
P: 206.525.0024
F: 206.525.1012
www.dcgengr.com



CALL 811
2 BUSINESS DAYS
BEFORE YOU DIG
UNDERGROUND UTILITY LOCATIONS ARE APPROX.



BASE MAP TOPOGRAPHY PROVIDED BY OTHERS. DCG CANNOT BE HELD LIABLE FOR ACCURACY. CONTRACTOR SHALL FIELD VERIFY GRADES, UTILITIES, & ALL OTHER EX FEATURES & CONDITIONS. IF CONDITIONS ARE NOT AS SHOWN ON PLAN, PLANS CANNOT BE CONSTRUCTED AS SHOWN. CONTACT DCG PRIOR TO CONSTRUCTION.

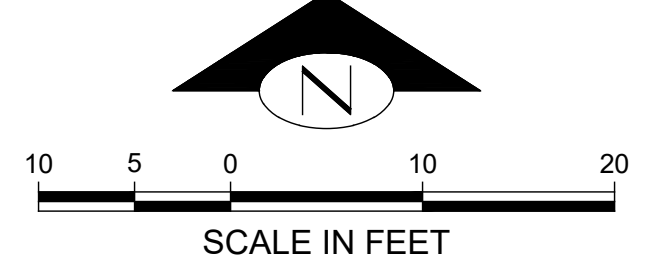
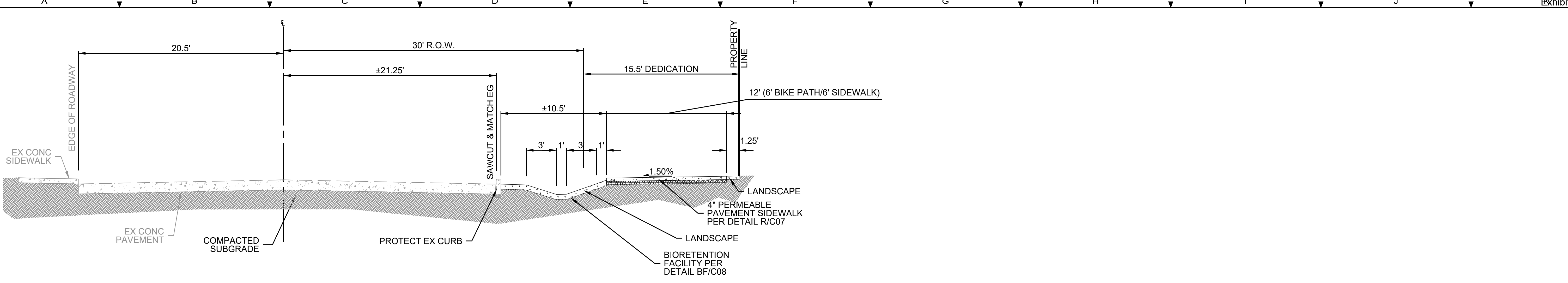
OWNER: 1702 SHORELINE, LLC
6513 132ND AVE NE #200
KIRKLAND, WA 98033

PROJECT: 1702 & 1710 N 185TH ST
SHORELINE, WA 98133
DENSMORE AVE N - GRADING PLAN

PROJ. MANAGER:	JR
DESIGNED BY:	JR
DRAWN BY:	MH
CHECKED BY:	BI
SCALE:	AS SHOWN
DATE:	4/26/2024
REV:	3
SHEET OF:	9

SHEET NUMBER
C03

CAD FILE NUMBER: P:\CLIENTS-CIVIL\RISE WORKS\1702 & 1710 N 185TH ST SHORELINE\DRAWING\ROW\1702 & 1710 N 185TH ST SHORELINE ROW PERMIT.DWG
 LAST MODIFIED BY: JREYNES - SAVE DATE: 4/26/2024 9:59 AM - SHEET SET: 1702 & 1710 N 185TH ST SHORELINE ROW PERMIT - ORIGINAL SHEET SIZE: ARCH FULL BLEED D (24.00 X 36.00 INCHES)
 AUTOCAD VERSION: CIVIL 3D 2017



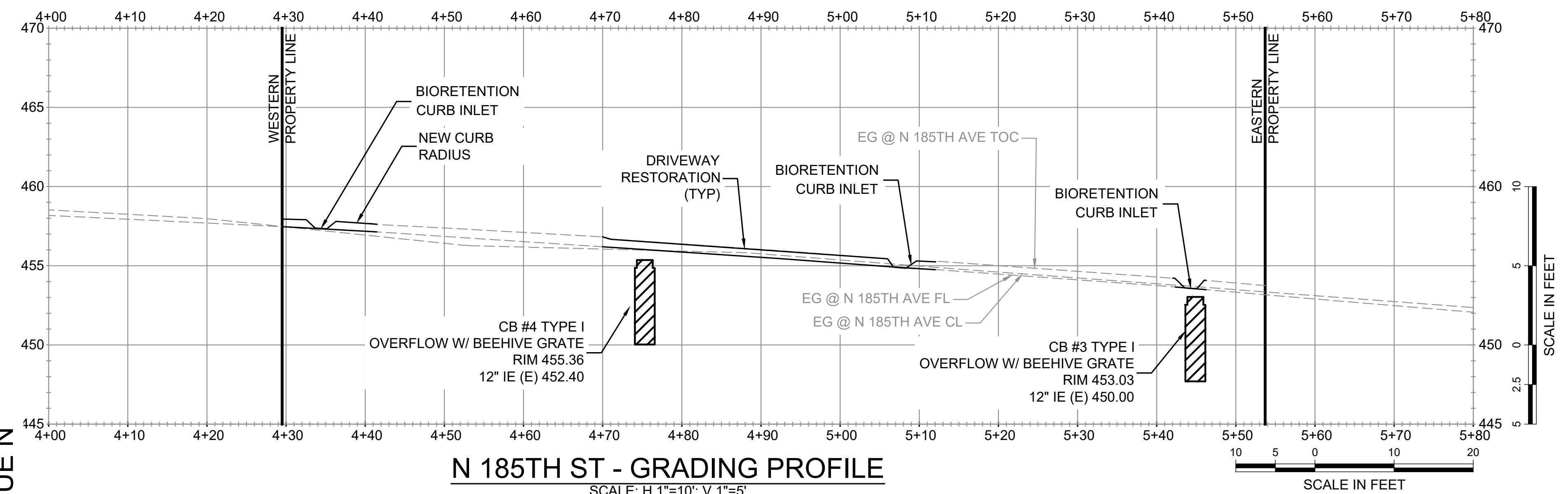
ROADWAY CROSS SECTION - N 185TH ST (A-A) C04
NOT TO SCALE

ABBREVIATIONS:

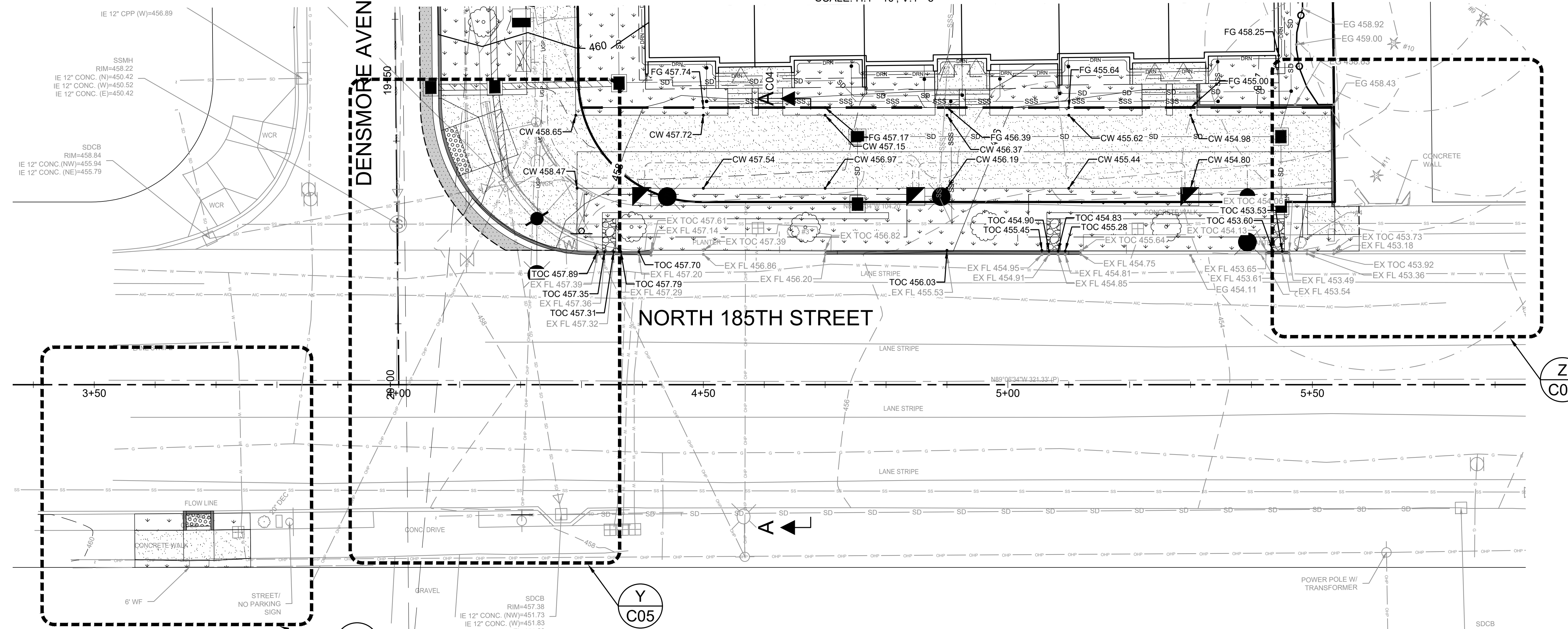
- BM = BENCHMARK
- BP = BIOPLANTER
- BOTS = BOTTOM OF STAIR
- CB = CATCH BASIN
- CL = CENTER LINE
- CONC = CONCRETE
- CW = CONCRETE WALK
- GR = GRADE
- EL = ELEVATION
- EOP = EDGE OF PAVEMENT
- EX = EXISTING
- EG = EXISTING GRADE
- FF = FINISHED FLOOR
- FG = FINISHED GRADE
- FL = FLOWLINE
- IE = INVERT ELEVATION
- LSCAPE = LANDSCAPING
- LT = LEFT
- M.I.C. = MONUMENT IN CASE
- NO. = NUMBER
- PC = POINT OF CURVE
- PT = POINT OF TANGENT
- RT = RIGHT
- STA = STATION
- STD = STANDARD
- TOC = TOP OF CURB
- TOP = TOP OF PAVEMENT
- TOPS = TOP OF STAIR
- TYP = TYPICAL

LEGEND:

- ASPHALT
- CONCRETE
- CONCRETE ROADWAY
- LANDSCAPE (SEE DETAIL P/C07)
- PERMEABLE PAVEMENT SURFACING (SEE DETAIL R/C07)
- GRAVEL



N 185TH ST - GRADING PROFILE
SCALE: H.1"=10'; V.1"=5'



N 185TH ST - GRADING PLAN
SCALE AS SHOWN

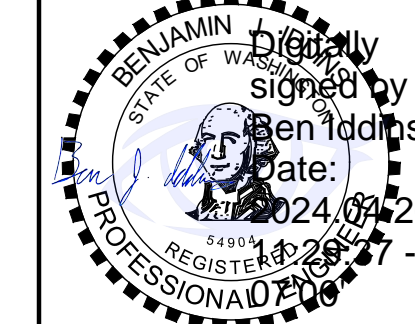
CAD FILE NUMBER: P:\CLIENTS-CIVIL\RISE WORKS\1702 & 1710 N 185TH ST SHORELINE\DRAWING\ROW\1702 & 1710 N 185TH ST SHORELINE ROW PERMIT.DWG
LAST MODIFIED BY: JREYNES - SAVE DATE: 4/26/2024 9:59 AM - SHEET SET: 1702 & 1710 N 185TH ST SHORELINE ROW PERMIT - ORIGINAL SHEET SIZE: ARCH FULL BLEED D (24.00 X 36.00 INCHES)
AUTOCAD VERSION: CIVIL 3D 2017

NO.	DATE	BY	REVISION
1	03/31/23	NA	REVISIONS PER CITY COMMENTS #1
2	08/30/23	BI	REVISIONS PER CITY COMMENTS #2
3	04/25/24	BI	REVISIONS PER CITY COMMENTS #3

LEED ACCREDITED PROFESSIONALS & THE RELATED ACCREDITED PROFESSIONALS ARE PROVIDED TO OWNED BY THE U.S. GREEN BUILDING COUNCIL & ARE AWARDED TO INDIVIDUALS UNDER LICENSE BY THE GREEN BUILDING CERTIFICATION INSTITUTE.



CALL 811
2 BUSINESS DAYS
BEFORE YOU DIG
UNDERGROUND UTILITY LOCATIONS ARE APPROX.



BASE MAP/TOPOGRAPHY PROVIDED BY OTHERS. DCG CANNOT BE HELD LIABLE FOR ACCURACY. CONTRACTOR SHALL FIELD VERIFY GRADES, UTILITIES, & ALL OTHER EX FEATURES & CONDITIONS. IF CONDITIONS ARE NOT AS SHOWN, ALL PLANS CANNOT BE CONSTRUCTED AS SHOWN. CONTACT DCG PRIOR TO CONSTRUCTION.

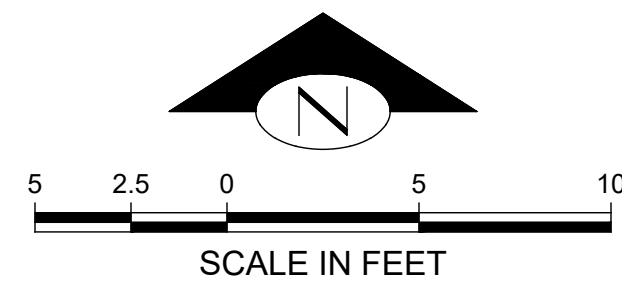
OWNER:
1702 SHORELINE, LLC
6513 132ND AVE NE #200
KIRKLAND, WA 98033

PROJECT:
1702 & 1710 N 185TH ST
SHORELINE, WA 98133
N 185TH ST - GRADING PLAN

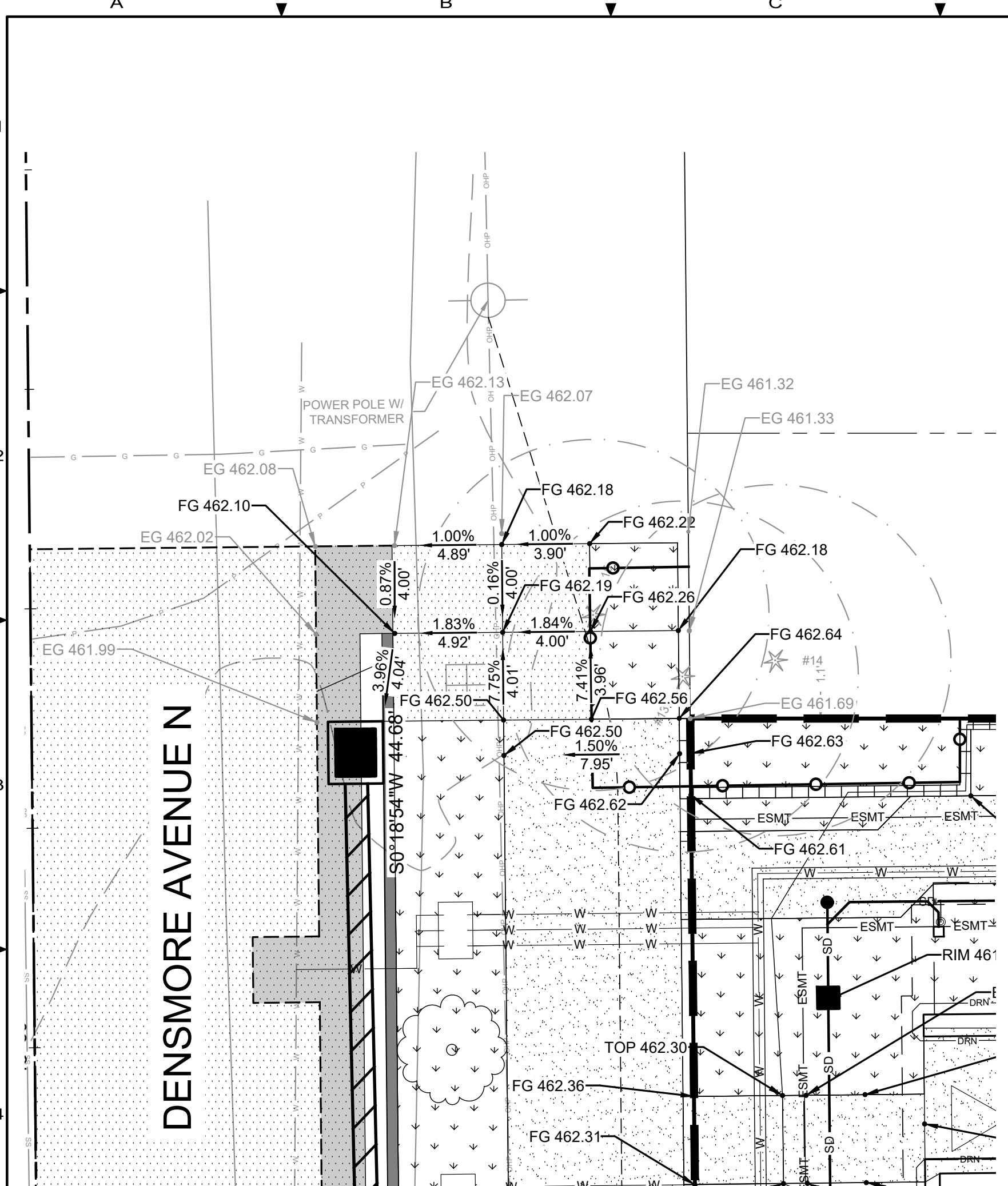
PROJ. MANAGER:	JR
DESIGNED BY:	JR
DRAWN BY:	MH
CHECKED BY:	BI
SCALE:	AS SHOWN
DATE:	4/26/2024
REV:	3
SHEET:	4
OF:	9

SHEET NUMBER
C04

ROW22-1694

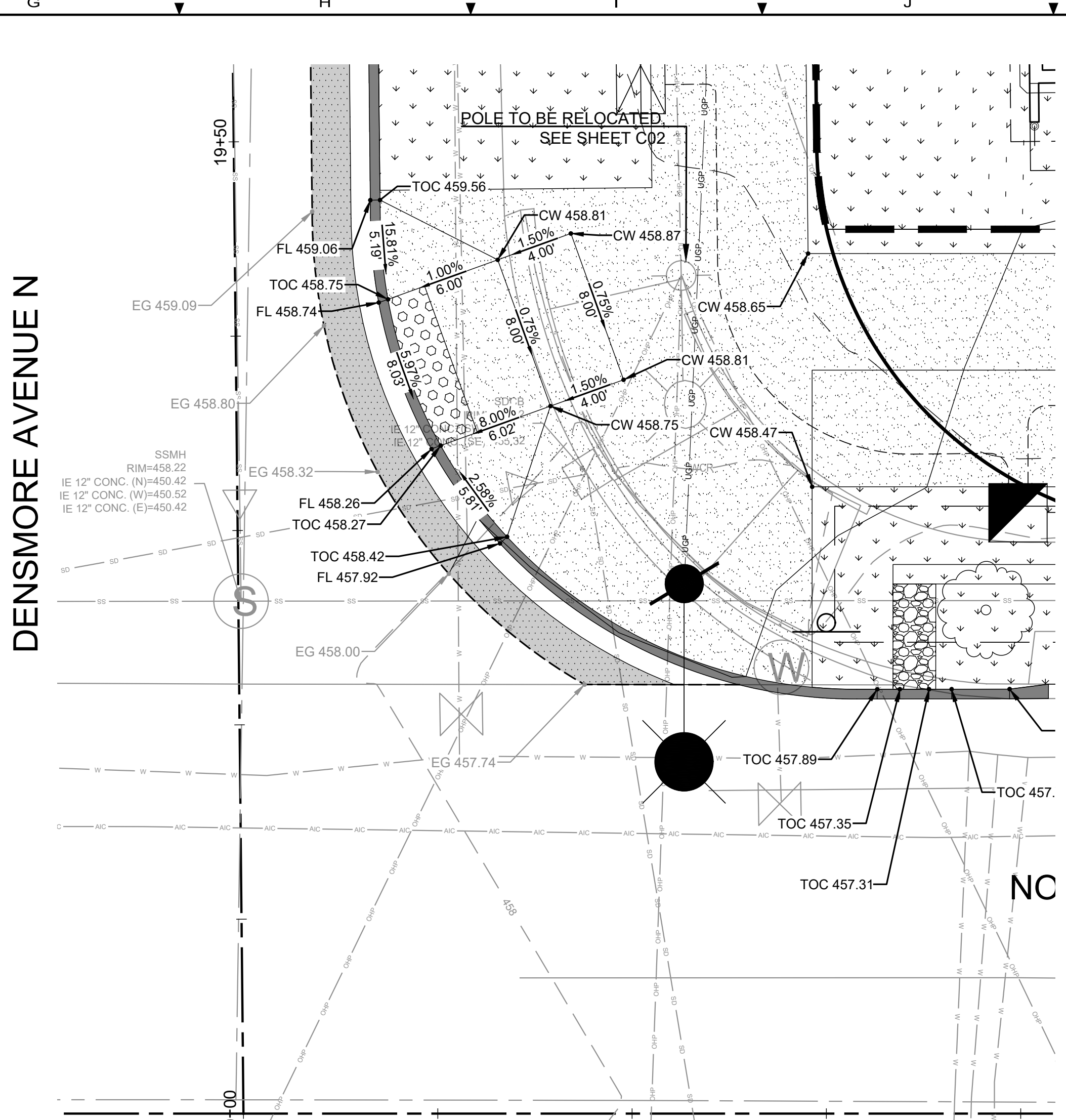


- LEGEND:**
- ASPHALT
 - CONCRETE
 - CONCRETE ROADWAY
 - LANDSCAPE (SEE DETAIL P/C07)
 - PERMEABLE PAVEMENT SURFACING (SEE DETAIL R/C07)
 - GRAVEL



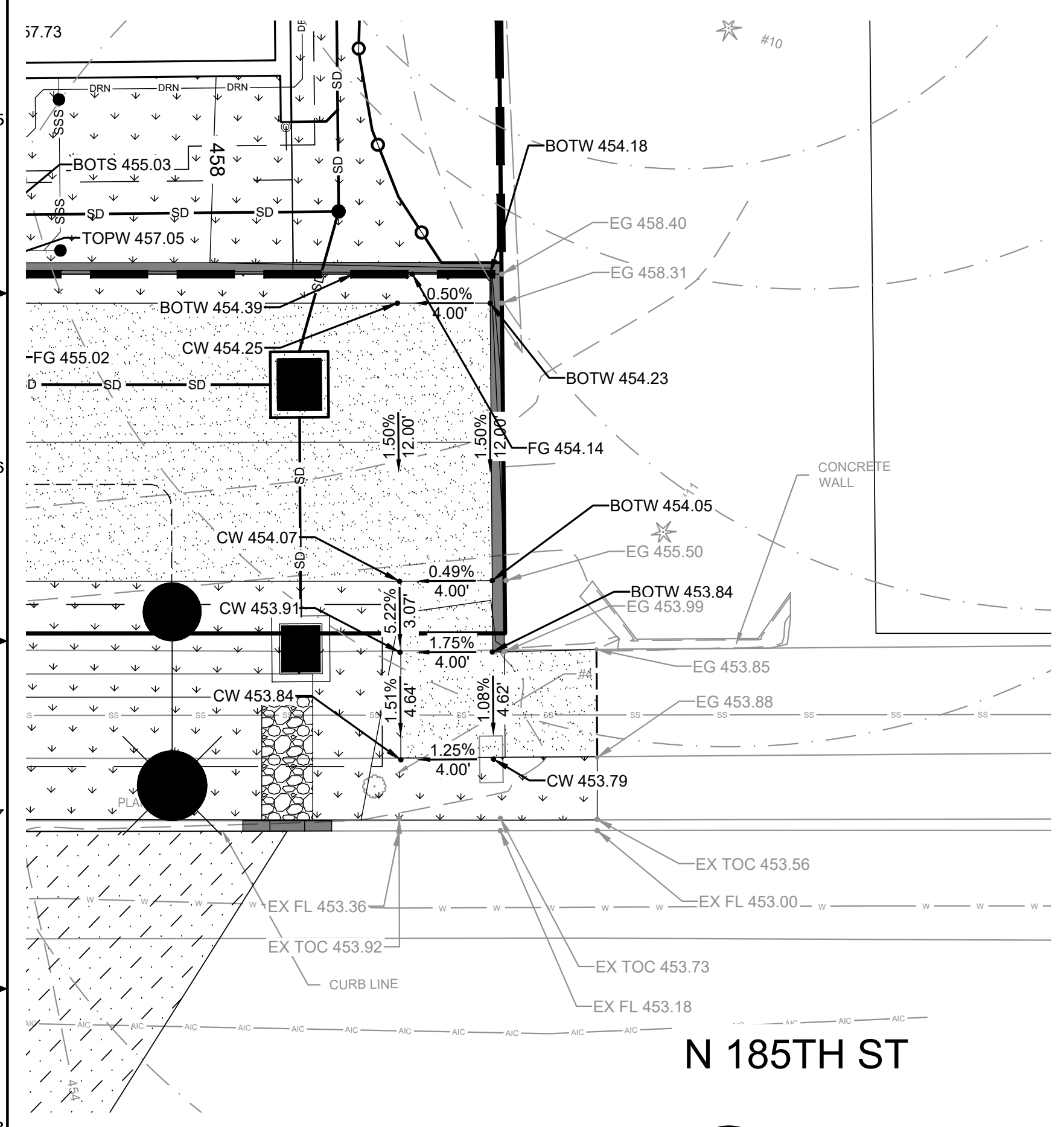
RAMP GRADING - DENMORE AVE N
SCALE: 1" = 5'

X
C03



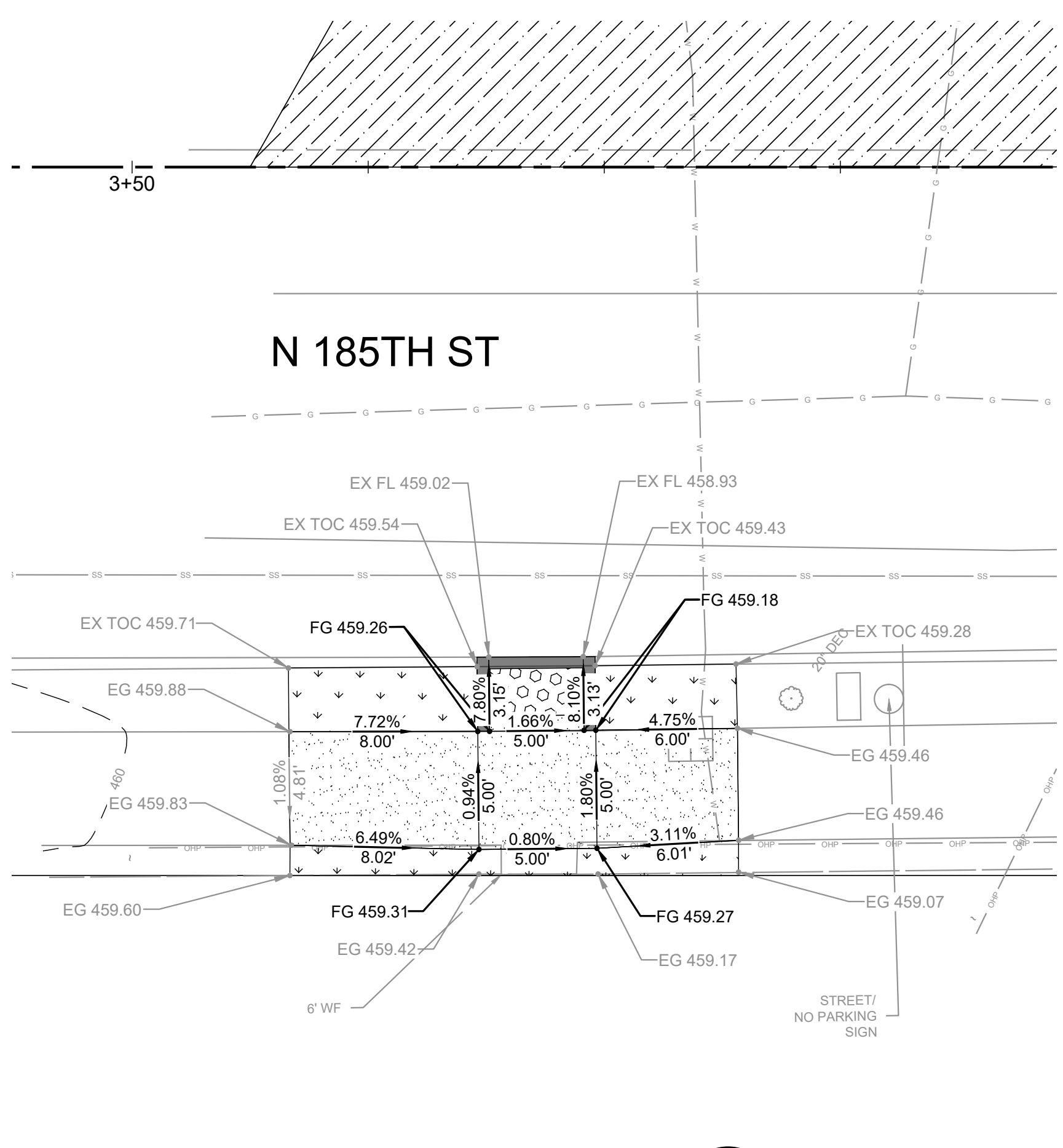
ADA RAMP GRADING
SCALE: 1" = 5'

Y
C04



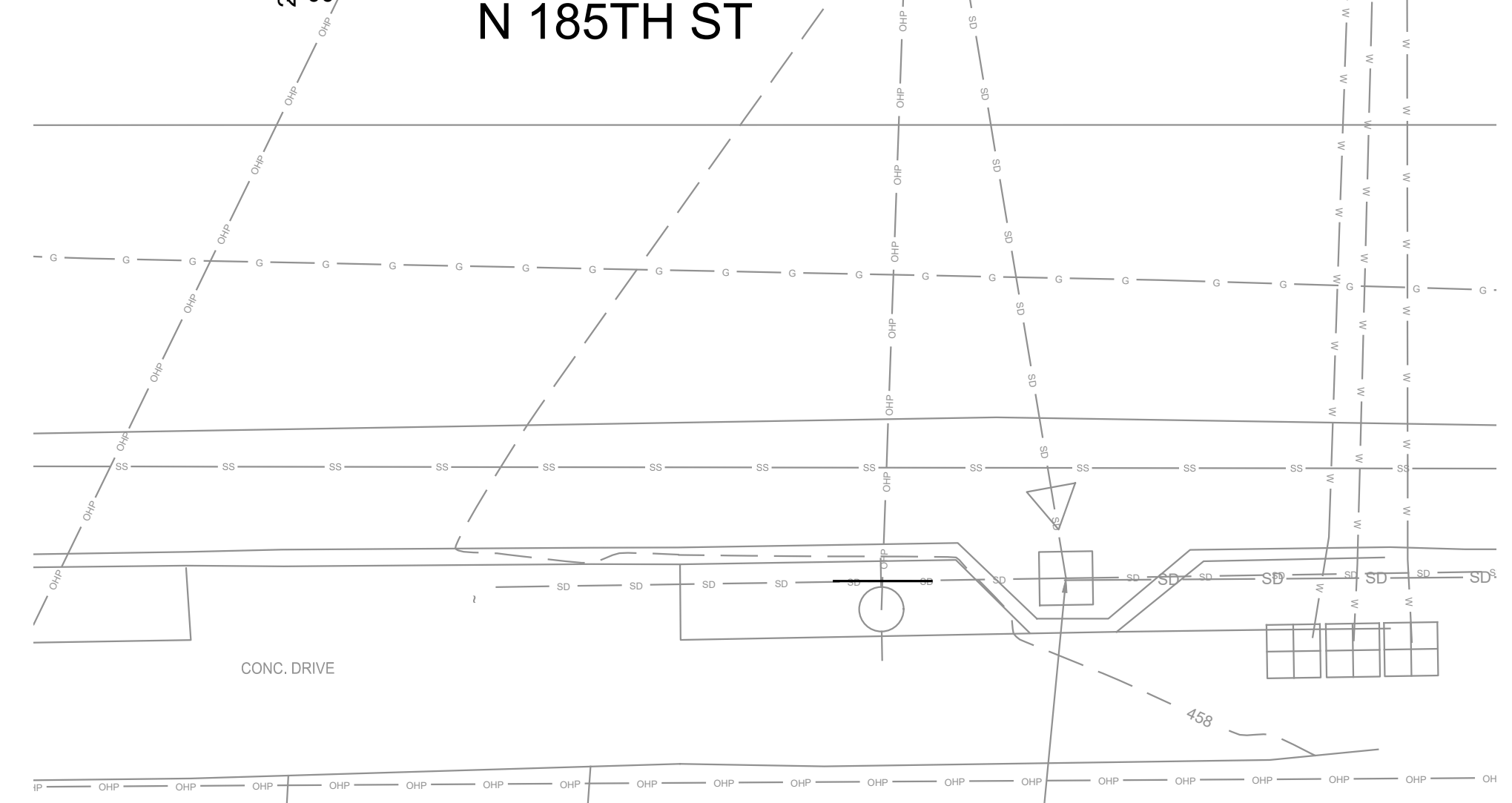
RAMP GRADING - N 185TH ST
SCALE: 1" = 5'

Z
C04



RAMP GRADING - N 185TH ST
SCALE: 1" = 5'

AA
C04

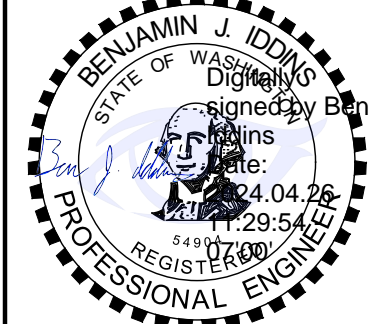


NO.	DATE	BY	REVISION
1	03/31/23	NA	REVISIONS PER CITY COMMENTS #1
2	08/30/23	BI	REVISIONS PER CITY COMMENTS #2
3	04/25/24	BI	REVISIONS PER CITY COMMENTS #3

9706 4th Ave NE
Suite 300
Seattle, WA 98115
P: 206.525.0024
F: 206.525.1012
www.dcgengr.com



CALL 811
2 BUSINESS DAYS
BEFORE YOU DIG
(UNDERGROUND UTILITY LOCATIONS ARE APPROX.)



BASE MAP TOPOGRAPHY PROVIDED BY OTHERS. DCG CANNOT BE HELD LIABLE FOR ACCURACY. CONTRACTOR SHALL FIELD VERIFY GRADES, UTILITIES, & ALL OTHER EX FEATURES & CONDITIONS. IF CONDITIONS ARE NOT AS SHOWN ON PLANS CANNOT BE CONSTRUCTED AS SHOWN. CONTACT DCG PRIOR TO CONSTRUCTION.

OWNER:
1702 SHORELINE, LLC
6513 132ND AVE NE #200
KIRKLAND, WA 98033

PROJECT:
1702 & 1710 N 185TH ST
SHORELINE, WA 98133
GRADING DETAILS

PROJ. MANAGER:	JR
DESIGNED BY:	JR
DRAWN BY:	MH
CHECKED BY:	BI
SCALE:	AS SHOWN
DATE:	4/26/2024
REV:	3
SHEET:	9

SHEET NUMBER
C05

CAD FILE NUMBER: P:\CLIENTS-CIVIL\RISE WORKS\1702 & 1710 N 185TH ST SHORELINE\DRAWING\1702 1710 N 185TH ST SHORELINE ROW PERMIT.DWG
 LAST MODIFIED BY: JREYNES - SAVE DATE: 4/26/2024 9:59 AM - SHEET SET: 1702 1710 N 185TH ST SHORELINE ROW PERMIT - ORIGINAL SHEET SIZE: ARCH FULL BLEED D (24.00 X 36.00 INCHES)
 AUTOCAD VERSION: CIVIL 3D 2017