

145th Street Corridor and I-5 Interchange Project Pre-Bid Meeting



October 3, 2023

Introduction

City of Shoreline Project Manager Cory Nau

145th Interchange Designer
145th Corridor Designer

Lochner - Rob McGaughey
Jacobs – John McKenzie

Construction Management

KBA PM – Mark Fuglevand
RE – Ken Kettel

Public Outreach

Jacobs – Elizabeth Guevara



Introduction

Agency	Contacts
WSDOT	Shawn Wendt Hieu Nguyen
SDOT	Johnathon Layzer Ganth Lingam Peter Sajer
SCL	Jon Gray German Gutierrez
SPU	Rachel Xu Sunny Salh
KC Metro	Mark LaFalce

Funding Partners

Grant Partners

Surface Transportation Program

Transportation Improvement Board

Regional Mobility

Connecting Washington

Sound Transit

Utility Partners

Seattle Public Utilities

Seattle City Light

Lumen

Comcast

Shoreline Sewer

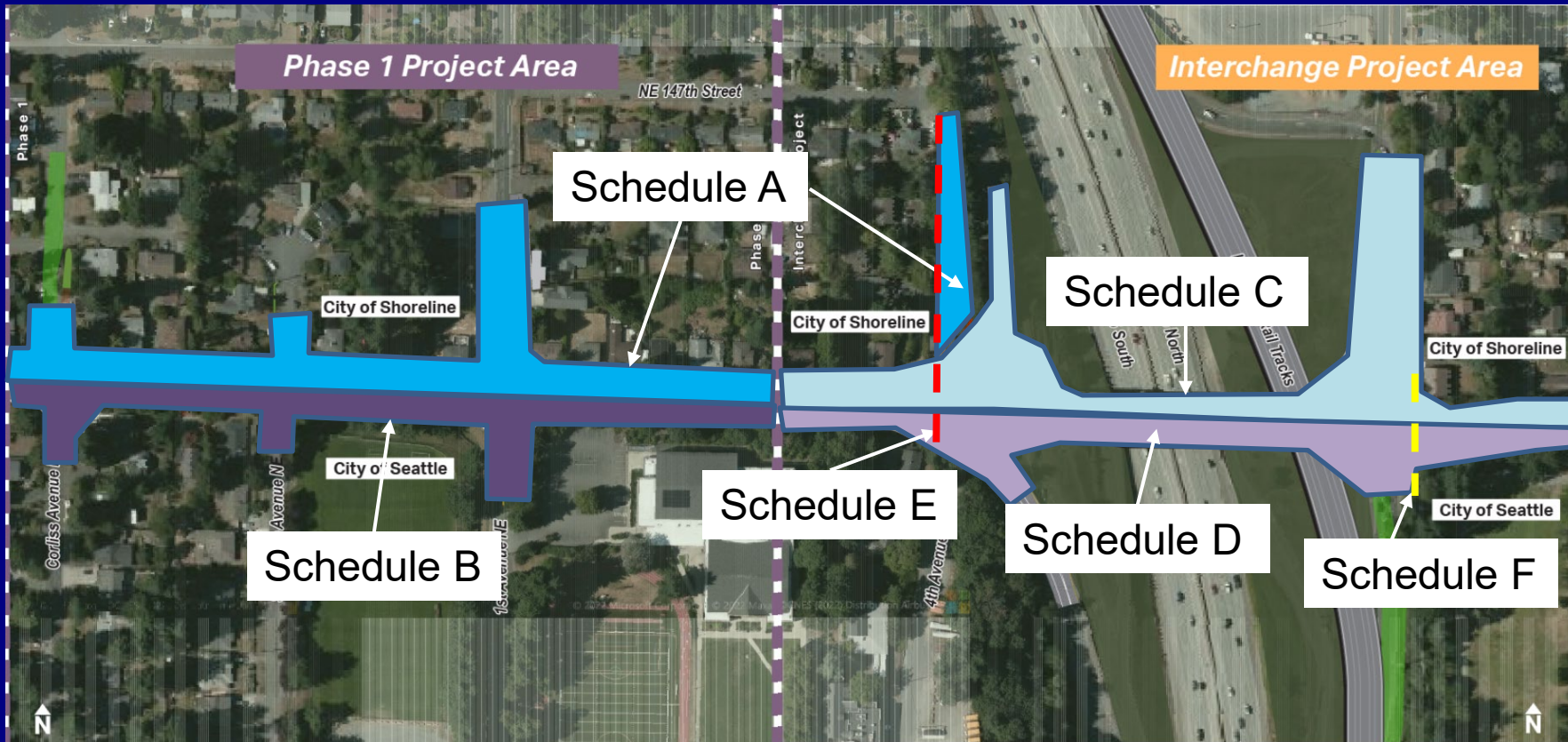


Schedule of Advertisement, Execution, and Project

	2023				2024												2025											
	Sep	Oct	Nov	Dec	Jan	Feb	Mar	Apr	May	Jun	Jul	Aug	Sep	Oct	Nov	Dec	Jan	Feb	Mar	Apr	May	Jun	Jul	Aug	Sep	Oct	Nov	Dec
145th Street Corridor and Interchange																												
Advertisement (Sep 19 to Oct 17)	█																											
Contract Execution (Oct 17 to Dec 15)		█	█	█																								
Construction (Jan 15 2024 to Sep 2025)					█	█	█	█	█	█	█	█	█	█	█	█	█	█	█	█	█	█	█	█	█	█	█	█
Open for Operation (Sep 2025)																												
Project Communication (Aug 2023 to Sep 2025)	█	█	█	█	█	█	█	█	█	█	█	█	█	█	█	█	█	█	█	█	█	█	█	█	█	█	█	█
Roundabout Orientation (June 2025 to Dec 2025)																												



Bid Schedules



Common Materials

Table – SP 2 & 3

City of Seattle Material	City of Seattle Spec. Ref.	WSDOT Material	WSDOT Spec. Ref.	Material Adopted for Common Use
Mineral Aggregate Type 1	Section 4-02 and Section 9-03	Crushed Surfacing Top Course	Section 9-03.9(3)	Crushed Surfacing Top Course
Mineral Aggregate Type 2	Section 4-02 and Section 9-03	Crushed Surfacing Base Course	Section 9-03.9(3)	Crushed Surfacing Base Course
Mineral Aggregate Type 6	Section 4-02 and Section 9-03	Fine Aggregate Class 1	Section 9-03.1(2)	Fine Aggregate Class 1
Mineral Aggregate Type 7	Section 4-02 and Section 9-03	Fine Aggregate Class 2	Section 9-03.1(2)	Fine Aggregate Class 2
Mineral Aggregate Type 14	Section 4-02 and Section 9-03	Ballast	Section 9-03.9(1)	Ballast
Mineral Aggregate Type 17	Section 4-02 and Section 9-03	Gravel Backfill For Wall	Section 9-03.12(2)	Gravel Backfill For Wall *
Mineral Aggregate Type 27	Section 4-02 and Section 9-03	Select Borrow	Section 9-03.14(2)	Select Borrow
Construction Geotextile for Underground Drainage	Section 2-15.3(2)	Construction Geotextile for Underground Drainage	Section 2-12.3(1)	Construction Geotextile for Underground Drainage (WSDOT)
Construction Geotextile for Separation	Section 2-15.3(3)	Construction Geotextile for Separation	Section 2-12.3(2)	Construction Geotextile for Separation (WSDOT)
Construction Geotextile for Soil Stabilization	Section 2-15.3(4)	Construction Geotextile for Soil Stabilization	Section 2-12.3(3)	Construction Geotextile for Soil Stabilization (WSDOT)
Non-Roadway Cement Concrete	Section 5-05	Cement Concrete Sidewalk	Section 8-14	Non-Roadway Cement Concrete
Roadway Cement Concrete	Section 5-05	Cement Concrete Pavement	Section 5-05	Cement Concrete Pavement
Concrete Class 3000	Section 6-02	Commercial Concrete	Section 6-02.3(2)B	Commercial Concrete
HMA Class ½ inch	Section 5-04	HMA Class ½ Inch PG58H-22	Section 5-04	HMA Class ½ Inch PG58H-22

Long Lead Items

1st Ave Signal

24 Inch Watermain



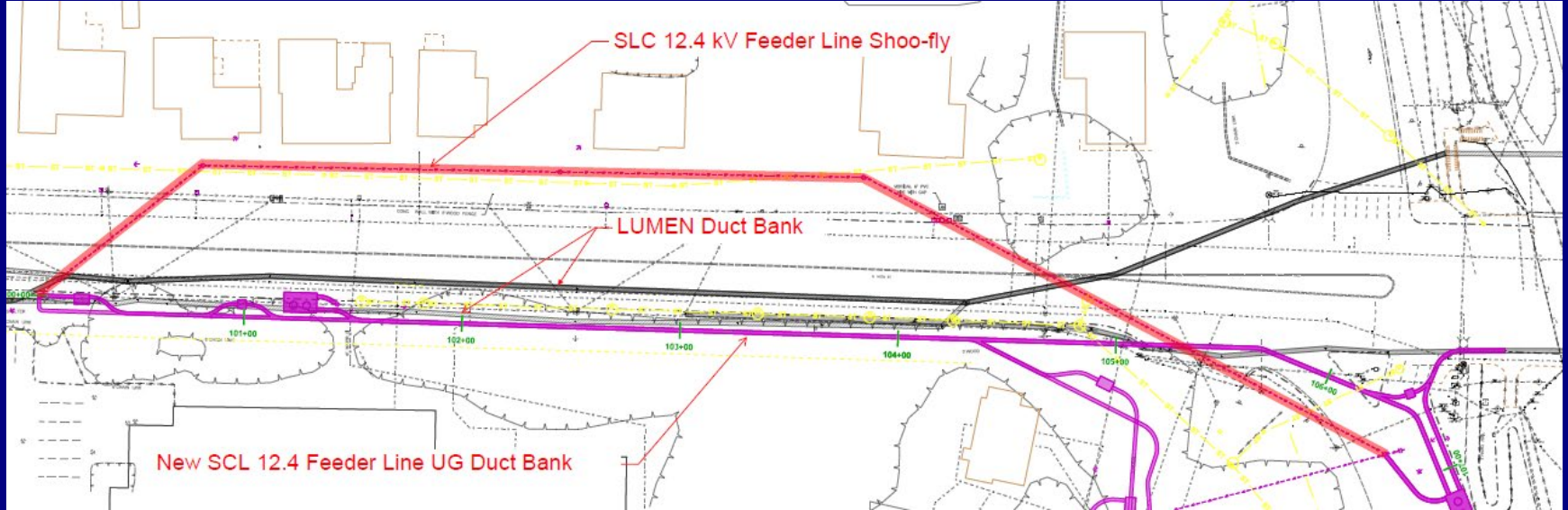
145th Ave Closure

180 Consecutive
Calendar days or
until September 30,
2024, whichever is
earliest

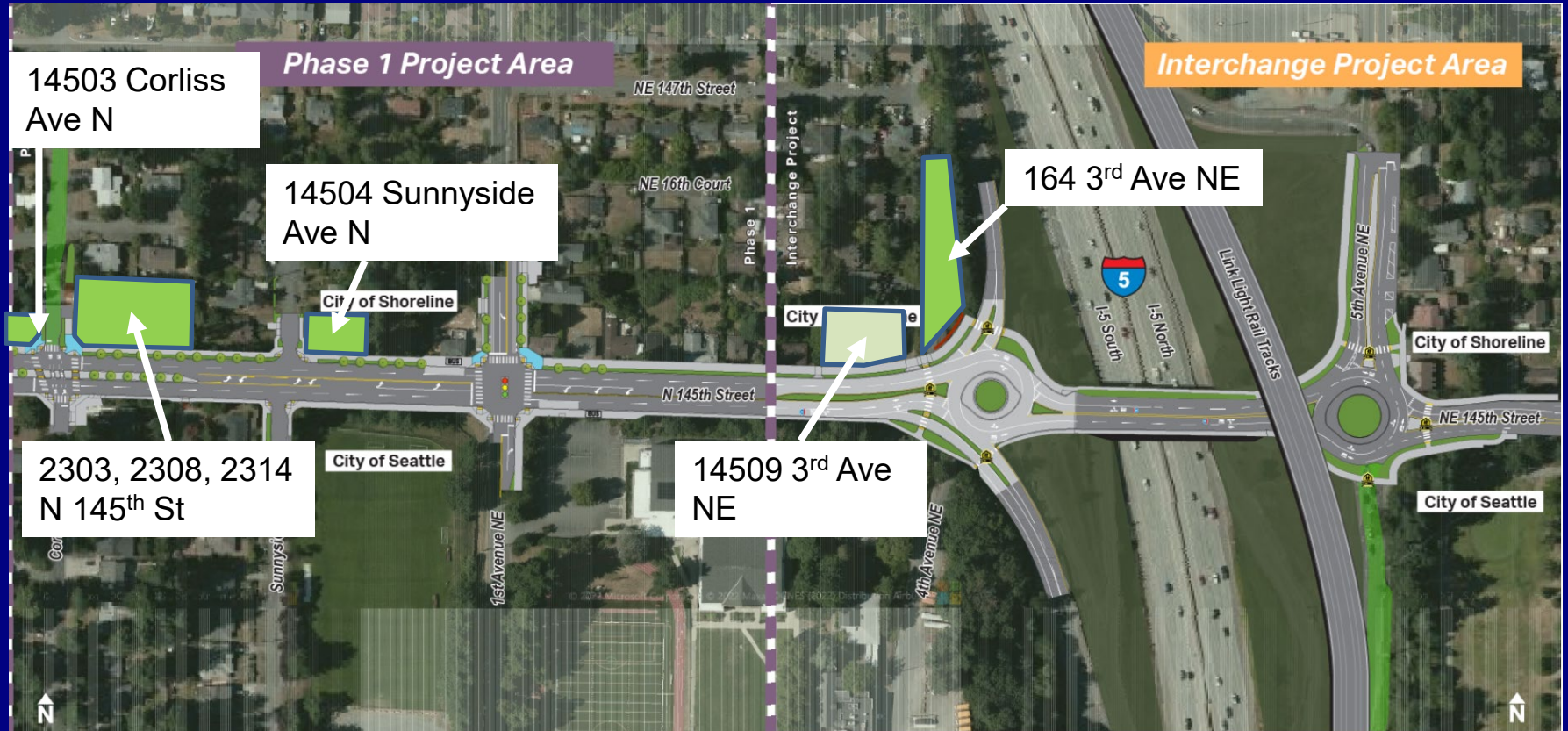


- ▨ Construction zone on N 145th Street from Corliss Avenue N to east side of I-5. **DATES:** Early 2024 - September 2025
- Full closure of N 145th Street from 1st Avenue N to I-5. **DATES:** Spring 2024 - Fall 2024
- Vehicle detour routes. East/west: N 155th Street & N 130th Street (Seattle). North/south: Meridian, 1st Ave NE, & 5th Ave NE. I-5 access from east side of the freeway.
- Pedestrian/bicycle detour route. Pedestrians and bicycles will be able to access the N 145th Street bridge across I-5 from a short detour route on N 147th Street.

SCL Shoo Fly for Soldier Pile Wall #1 and Lumen Relocation



City Owned Properties



Questions

