



STATE OF THE CITY

JUNE 15, 2023

Healthy Community, Safe Community

2022 Accomplishments

2022 Accomplishments

- 3,741 permit applications
- 2,280 building and development permits issued
- 405 Construction permits with roughly \$698 million in construction valuation
- Approximately \$16.6 million in permit fee revenue

2022 Accomplishments

- 28 film project inquiries
- A record 17 film productions

2022 Accomplishments

- Awarded \$23 million in grant funding for capital projects
 - \$16.4 million for 148th non-motorized bridge
 - \$5 million for Phase 1 of 145th Corridor Project
- Conservation Futures Tax grants to expand parks system
 - One parcel just west of 192nd park and ride
 - Four parcels adjacent to Rotary Park

2022 Accomplishments

- Collected almost \$3 million in Transportation Impact Fees and \$360,000 in Park Impact Fees

2022 Accomplishments

- Expanded our electric vehicle fleet and added to our electric equipment
- Planted over 135 conifers in parks
- Restored 1.9 acres of park land from invasive vegetation

2022 Accomplishments

- Gave away 119 trees to residents through Communi-trees program
- Trees for Rail program planted over 200 trees and 1,100 shrubs and groundcover on 118 properties along the light rail corridor

2022 Accomplishments

- Removed 238 instances of graffiti from public infrastructure
- Performed 2.5 lane miles of crack sealing pavement preservation
- Patched 1,333 potholes

2022 Accomplishments

- Completed renovation of four park restrooms
- Supported installation of new restroom at Hillwood Park

2022 Accomplishments

- Investigated 498 new code enforcement cases
- Closed 314 cases
- Triaged 5,462 service requests

2022 Accomplishments

- Tagged 1,358 unauthorized vehicles
- Impounded 83 vehicles

2022 Accomplishments

- Processed a record 742 public disclosure requests

CITY OF SHORELINE PROPOSITION 1

General Obligation Bonds for Parks Improvements and Park Land Acquisition



Park Improvements

If approved by Shoreline voters, Proposition 1 authorizes improvements to eight parks and the acquisition and improvement of new park land.

Improvements will be made at Brugger's Bog, Hillwood, Richmond Highlands, Briarcrest Community (Hamlin East), and James Keough Parks. These improvements include such things as playgrounds, splash-pads, multi-sports courts, walking trails, picnic shelters,

off-leash dog areas, and a fully accessible play area for people of all physical abilities.

Additional park improvements include constructing a new off-leash dog area and play area at Ridgecrest Park; upgrading the off-leash dog area and converting the dirt soccer field to grass at Shoreview Park; making the education center and children's garden accessible to people of all abilities at

Kruckeberg Botanic Garden; and installing temporary and permanent public art in parks and public spaces throughout the City.

Park land acquisitions and improvements will expand Paramount Open Space, Brugger's Bog, and Rotary Park, and will include additional park land acquisitions in the light rail station areas and other parts of the City.

More information: shorelinewa.gov/prop1

Below is the 2018 concept design for Richmond Highlands Park, one of the five parks receiving significant investment in Proposition 1. If Proposition 1 is approved, we will move to the final design phase for each of the parks.



CITY OF SHORELINE PROPOSITION 1

Maintenance and Operations Levy for Public Safety and Community Services



Shoreline Proposition 1

In 2010 and 2016, Shoreline voters approved six-year levy lid lifts for basic public safety, parks and recreation, and community services. The 2016 levy expires at the end of this year. The City Council has approved placing a measure on the November general election ballot asking Shoreline voters whether they will approve a levy to replace the expiring 2016 levy. Revenue collected from levy lid lifts help the City maintain day-to-day city services and programs.

Property taxes collected by the City go into the City's operating fund. If approved by voters, Proposition 1 would maintain current levels of police and community safety services, including neighborhood safety patrols; traffic enforcement in school zones and neighborhoods; and community crime prevention programs. It would also enhance the RADAR Program by adding mental health professional teams to provide 24/7 response with police to community members in behavioral health crisis. Proposition 1 would also preserve safe, well-maintained, and accessible parks and trails; playgrounds and play equipment that meet safety standards; playfields and restrooms; and preserve recreation programs for youth, adults, families, and seniors. Proposition 1 would continue funding for community services for seniors, youth, and individuals and families in need, including homelessness response services. The levy would also sustain the City's code enforcement and customer response programs.

What is a levy lid lift?

Washington's property tax is a levy-based property tax system, which means state law allows a city to collect a specified total dollar amount (the levy) per year. State law limits levy increases to 1% per year.

The exception to this rule is the levy lid lift, which allows cities to go to the voters to ask that the levy rate be increased (lid lift) to an amount equal to or less than the statutory maximum rate, which is \$1.60. State law also allows cities to ask voters if they would approve a larger annual increase than 1%. The maximum length of a levy lid lift that both resets the levy rate and the annual escalation is six-years.



2023-2024 Biennial Budget by Fund

Fund	Amount	% of Budget
Internal Service Fund	\$950,180	.3%
Debt Service Fund	\$12,438,886	3.5%
Enterprise Fund	\$82,809,183	23.1%
Operating Fund	\$128,197,832	35.2%
Capital Fund	\$136,778,443	37.9%
Total	\$361,174,524	100%

Healthy Community

Housing

Housing - Homelessness

- King County Regional Homelessness Authority and coalition of north King County cities consolidate funding
- Will evaluate over the next four years



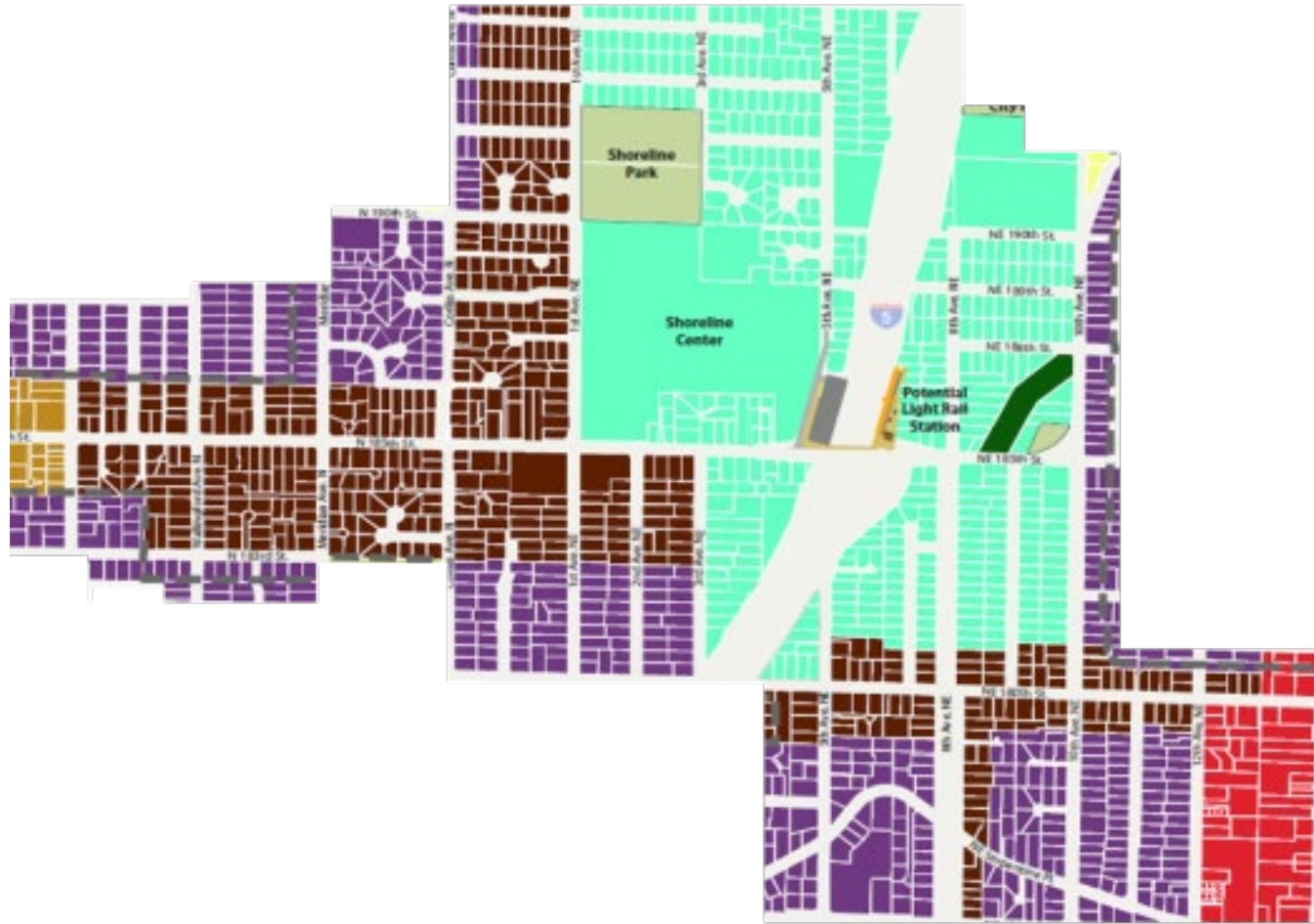
THE OAKS 24/7 SHELTER

The Oaks 24/7 Shelter

- 82 individuals stayed at shelter in 2022
- 112 served through outreach program
- Of those served, 89 reported Shoreline as last address
 - 34 of those stayed in the shelter
 - 55 received help through outreach program



PERMANENT SUPPORTIVE HOUSING AT 198TH



MIXED-USE RESIDENTIAL (MUR) ZONES



MIDDLE HOUSING

HUMAN SERVICES AND BEHAVIORAL HEALTH



City of Bothell



Brook Buettner

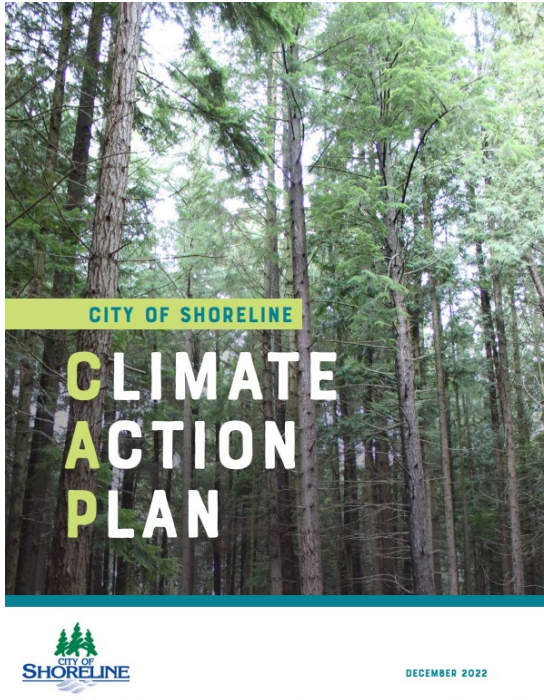
EXECUTIVE DIRECTOR OF REGIONAL CRISIS RESPONSE
AGENCY

Our Guiding Documents

Comprehensive Plan Update

- Shoreline in 2044
- Each decision through 3 lenses
 - Equity and social justice
 - Climate
 - Housing





Economic Health

Business Outreach

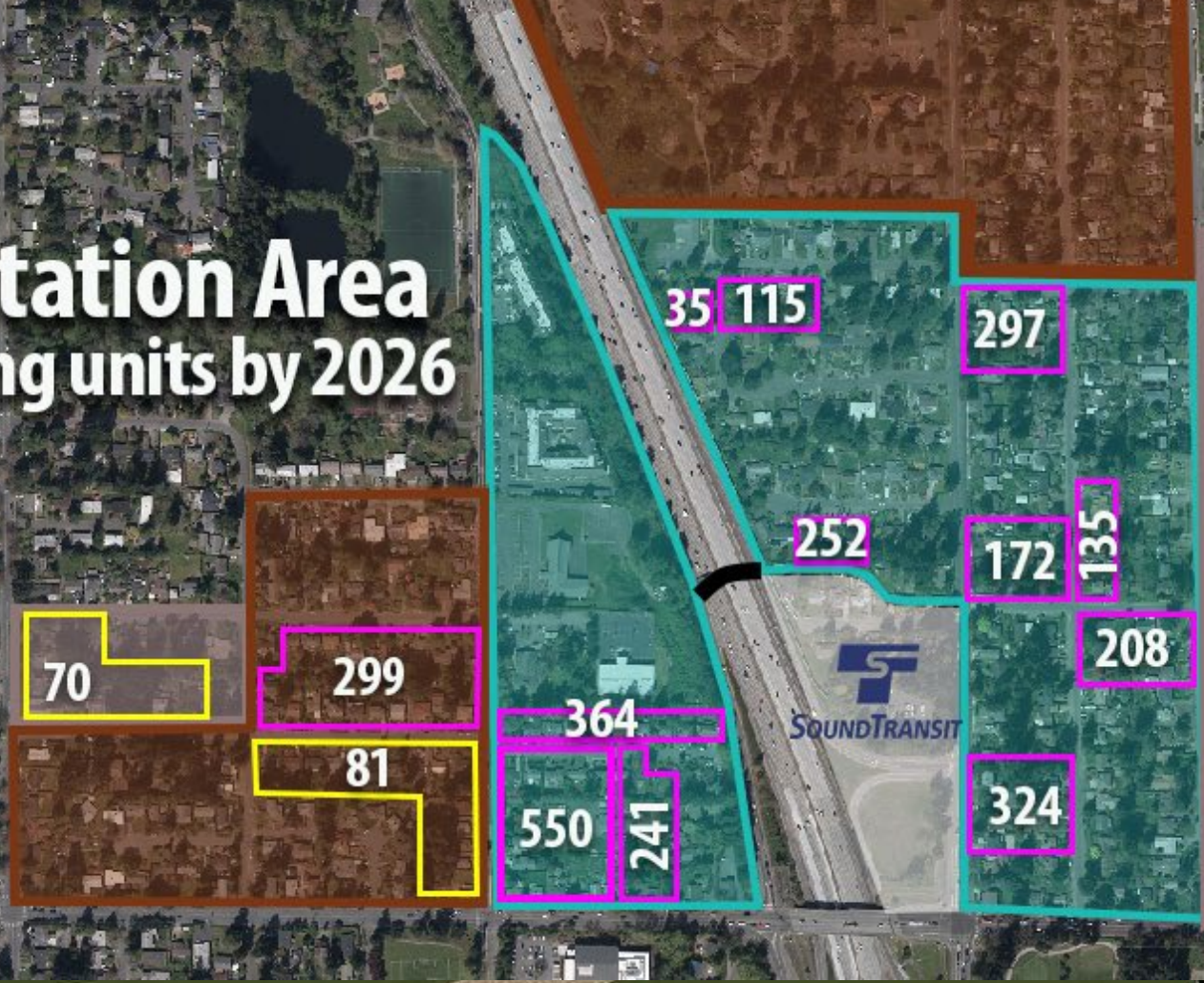


Selam Habte

BUSINESS SPECIALIST

148th Station Area

New housing units by 2026



A COMMUNITY TRANSFORMED

GROUND
FLOOR
COMMERCIAL





SHORELINE PLACE

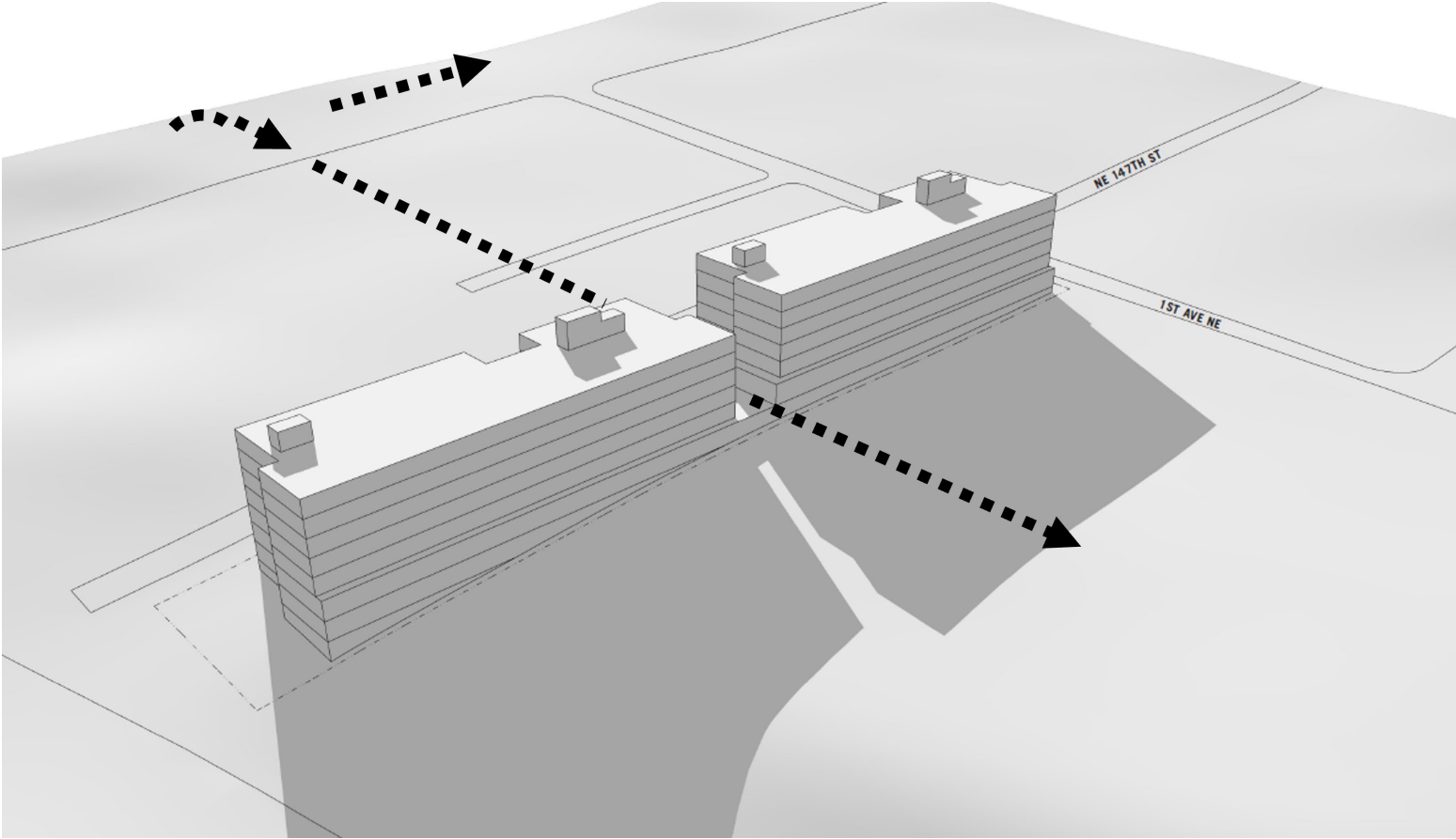


KINECT:
ACG American
Capital Group



THE LINE:
Evergreen Point
Group @ NE 145th

MID-BLOCK CONNECTIONS



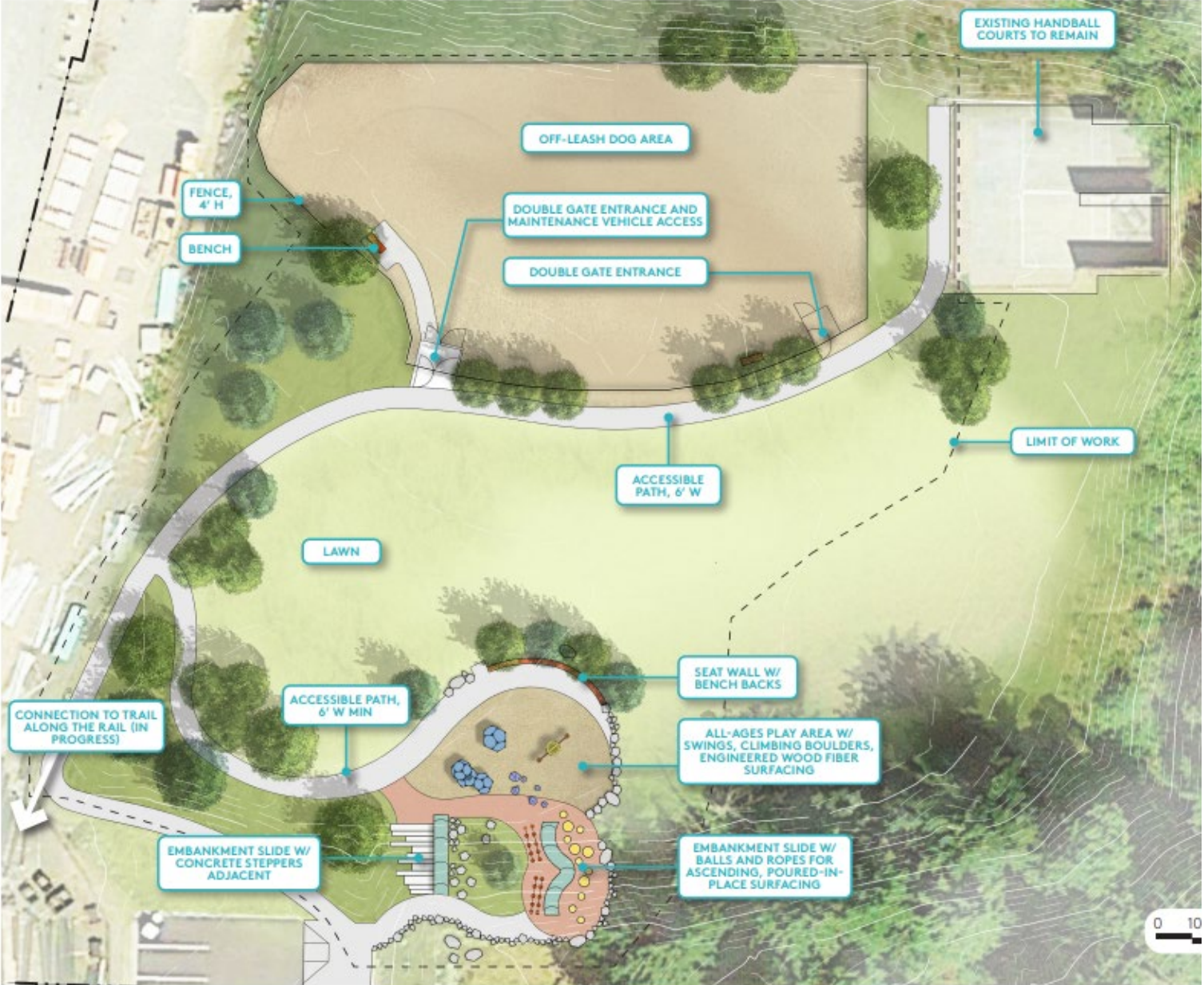


ROTARY PARK

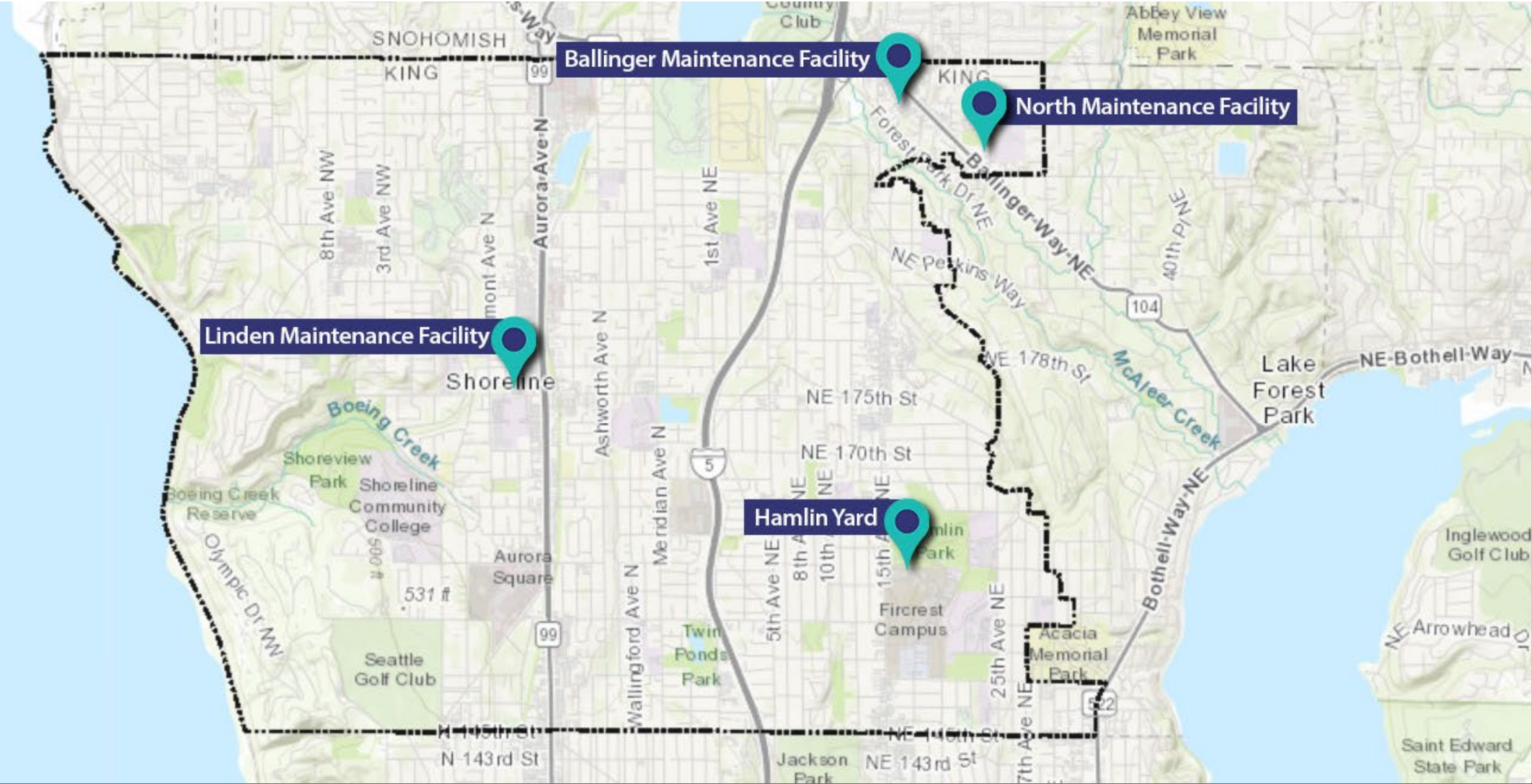
Safe Community

Infrastructure

RIDGECREST PARK THEME: BOULDER HILL



2022 PARK BOND PROJECTS



MAINTENANCE FACILITY PROJECT



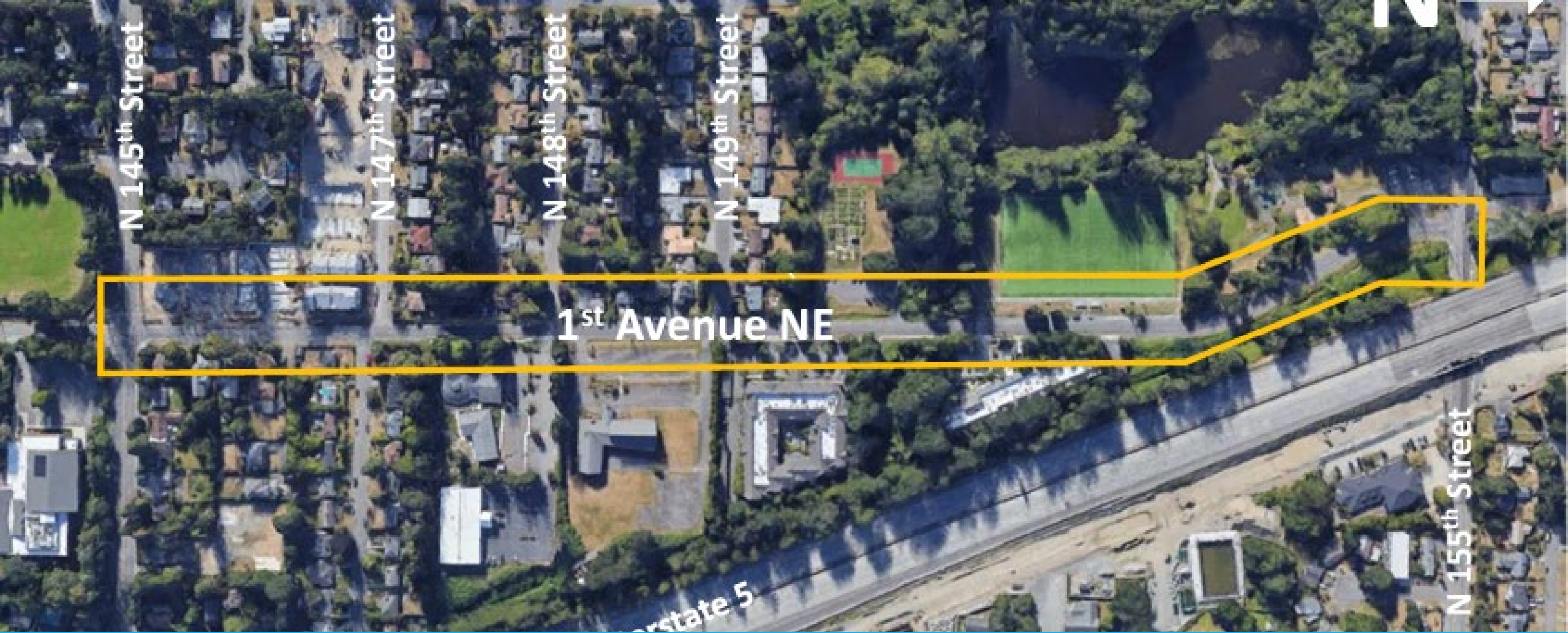
SIDEWALK REHABILITATION PROGRAM

\$20 Vehicle License Fee



20TH AVENUE NW

2018 Voter-Approved 0.2% increase of the Sales and Use Tax



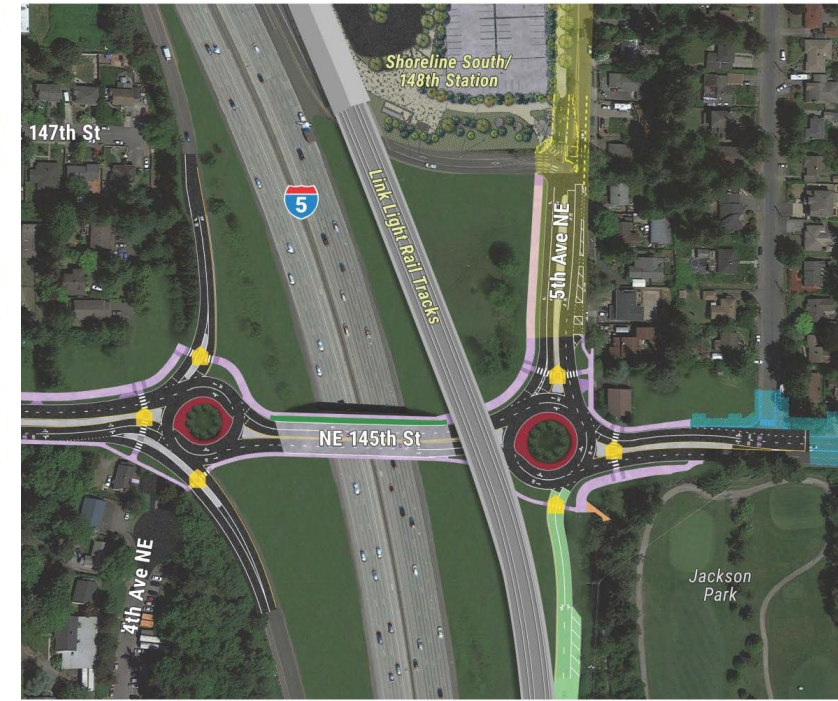
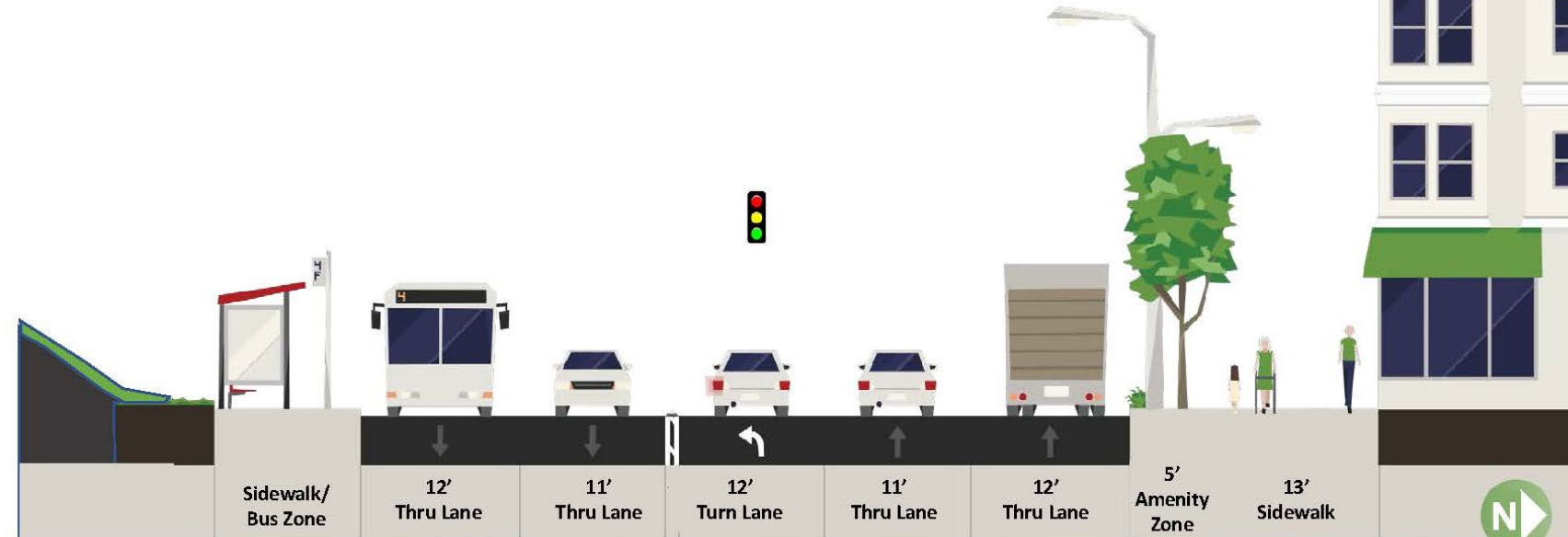
1ST AVENUE NE

Sound Transit Access Funds



Citywide Pedestrian Safety

145th Street Near First Avenue looking west



- Sidewalks
- Rapid-flashing beacons (🚓)
- Two-way bike lane
- Connection to Jackson Park Trail
- Sound Transit, Shoreline South 148th Station roadway improvement
- City of Shoreline, 145th Street Corridor Project
- Sound Transit, Stride Bus Rapid
- Seattle Department of Transportation future traffic revisions and cycle

145TH CORRIDOR IMPROVEMENTS



148TH NON- MOTORIZED BRIDGE



LIGHT RAIL AND BUS RAPID TRANSIT (BRT)



Police Chief
Kelly Park

City of Shoreline



A Welcoming Place for All



SUMMER EVENTS

