

Snow and Ice Event Planning and Operations

December 5, 2022



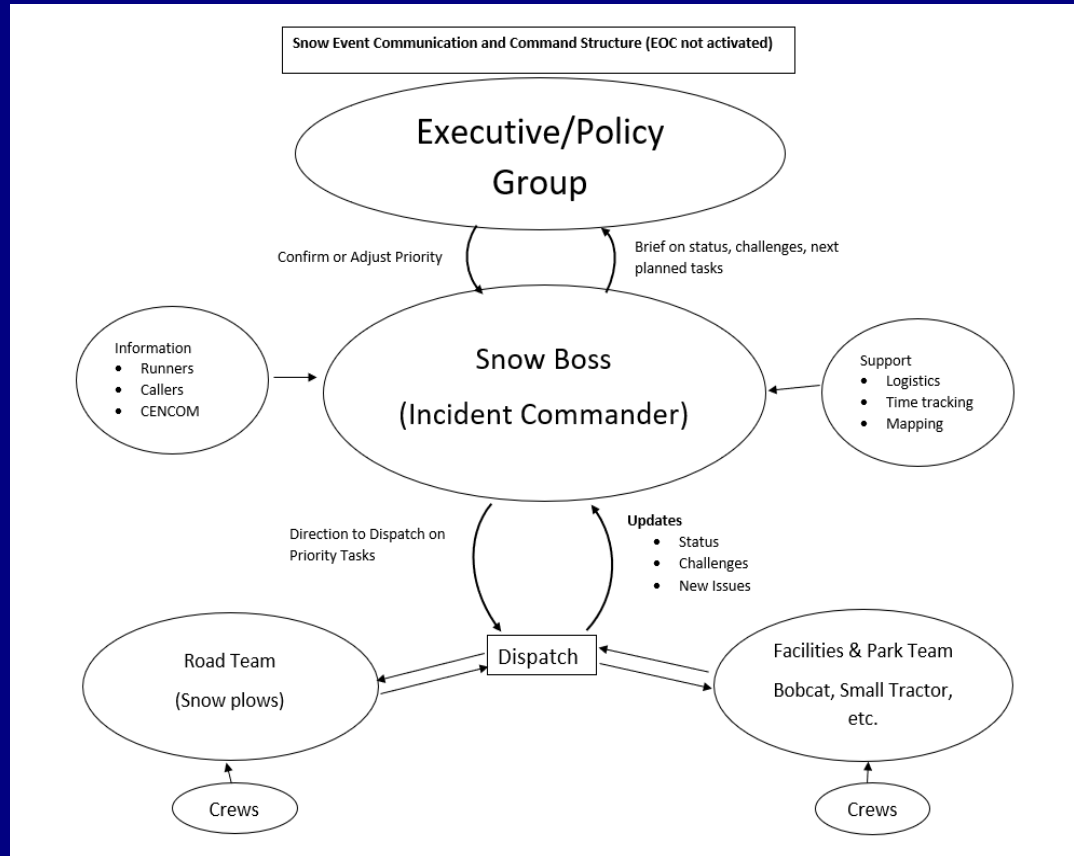
Agenda

- Guiding Principles
- Priorities of Service
- Personnel, Scheduling, Equipment, Supplies and Facilities
- Environmental Considerations
- Future Capabilities
- Conclusion

Event Readiness



Unified Response

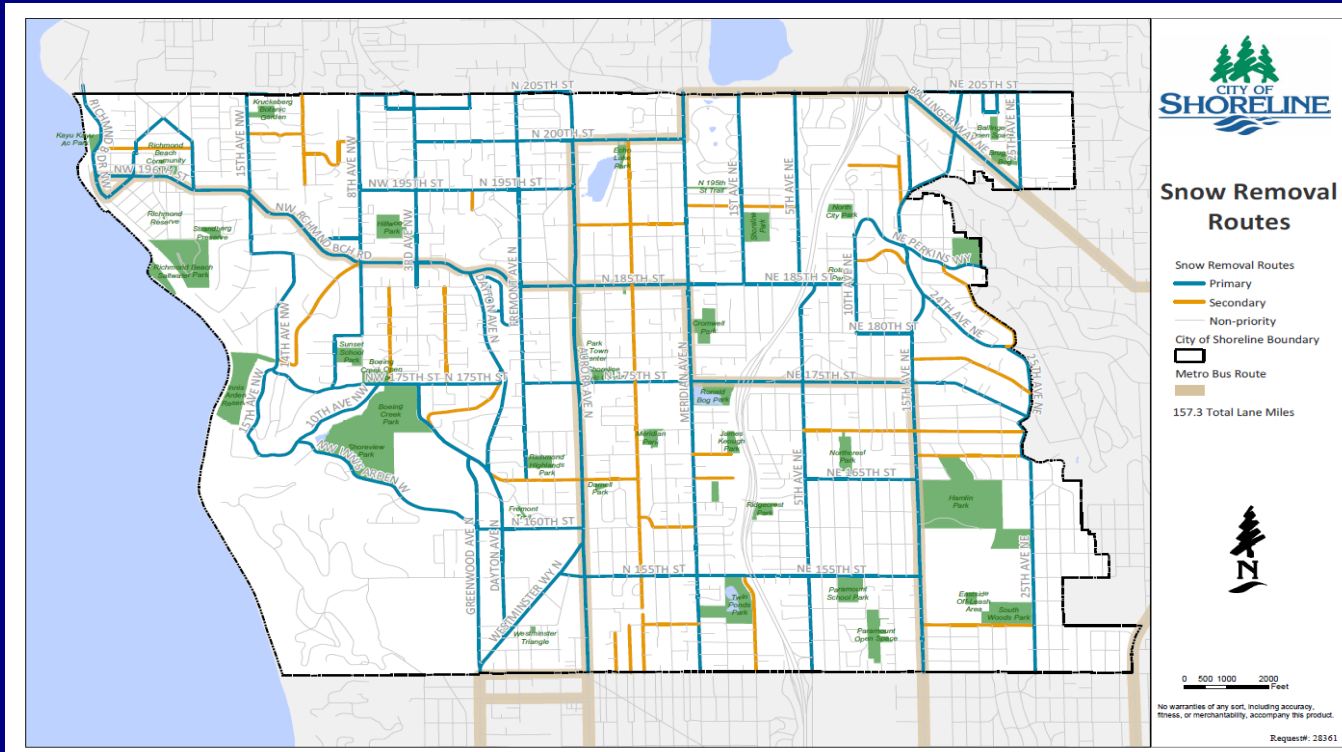


Event Conclusion



Priorities of Service

Public Works



Priorities of Service

Parks, Facilities and Fleet



Priorities of Service

Community Services

- Emergency severe weather shelter
- Outreach to the unhoused



Personnel

Public Works

- Primary - 19 (Streets, Grounds, CECRT)
- 1st Reserve – 7 (Wastewater)
- 2nd Reserve – 11 (Other work sections)

Parks, Facilities and Fleet

- Primary – 10

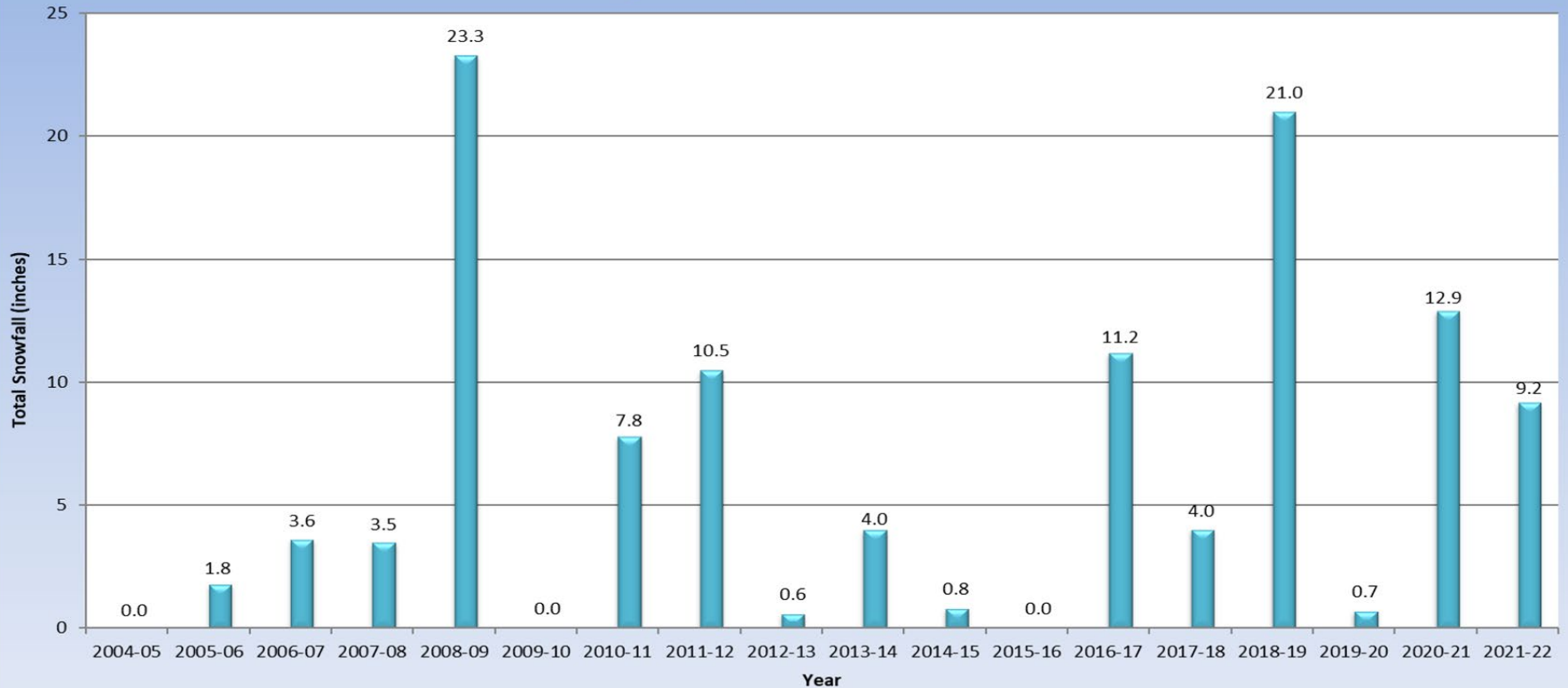


Scheduling

- Predicted event determines the staffing plan
- Short duration event with light snow accumulation may not require full staffing mobilization
- Longer duration event with heavier snow accumulations requires full staff mobilization and 24-hour coverage via 12-hour shifts

Challenges with Event Planning

Seattle Snow by Winter, 2004-05 to 2021-22

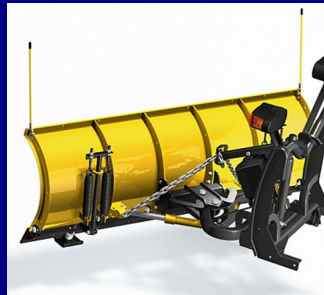


Equipment



Supplies

- Approximately 200 tons of road salt
- 8,400 gallons of liquid deicer
- Extra plow vehicle parts
 - Tire chains
 - Cutting blades
 - Blade markers
 - Etc.



Environment

- Minimize Negative Impacts
 - Salmon Safe Certified
 - Staff Training
 - Best Winter Practices



NORTH AMERICAN
SNOW
CONFERENCE
PITTSBURGH, PA



Facilities

- Hamlin Maintenance Facility
 - Command Center
 - Vehicle and Equipment Operations
 - Deicing Product Storage



Service Challenges

- Compact Snow and Ice



Service Challenges

(Continued)

- Crowded Residential Streets



Service Challenges

(Continued)

- Bus Routes and Stops



Future Capabilities

- Ballinger Maintenance Facility
 - Covered salt storage
 - Increased liquid deicer storage
 - Salt brine generation
- Additional liquid deicer tank and spray equipment



Public Safety Tips

- Prepare yourself and vehicles for winter driving conditions
- If you must drive - be patient
- Give yourself extra time to travel
- Don't pass or crowd the plow – stay back at least 100 feet
- Park vehicles off the street
- Place garbage and recycle containers in the driveway and not on the street



Conclusion

- We are committed to continuously improve our winter response efforts through:
 - Ongoing staff education, training and city-wide resource allocation and coordination
 - Employment of sound environmental practices
 - Equipment standardization and judicious deployment of technology
 - Critical analysis of event performance

Questions?

