



CURRENTS

News from the City of Shoreline

Volume 24 No. 9

November 2022

New City Manager - Bristol Ellington



CITY COUNCIL has appointed Bristol Ellington to be the City's next City Manager. Ellington's appointment was the culmination of a 13-week nationwide search for a new city manager after former City Manager Debbie Tarry announced her retirement in May.

"The City of Shoreline had an amazing range of very qualified applicants for this position," said Shoreline Mayor Keith Scully. "Bristol brings a combination of outside experience, commitment to Shoreline's values, and leadership excellence that I'm confident will serve Shoreline well. I'm

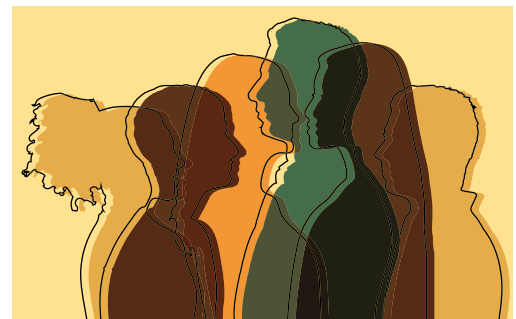
looking forward to working with him as Shoreline's next City Manager."

"The City Council and the Shoreline community have developed a bold vision for the future that will create a vibrant, welcoming city for everyone," declared Ellington. "That is what drew me to this position. I am humbled and honored to be selected as the City of Shoreline's next City Manager and I look forward to leading the organization and serving the community as we work to make that vision a reality."

Most recently, Ellington served as the Deputy City Manager/Chief Operating Officer for the City of Henderson, Nevada. He had been in that position since 2018. Since 1996, Ellington has worked for the City of Henderson in different leadership and managerial roles, including the Assistant City Manager, the Director of Community Development, and the Assistant Director of Community Development. Prior to working for Henderson, Ellington served as a planner for the cities of Palm Beach, Florida and Gainesville, Florida, and the Town of Hilton Head, South Carolina.

Ellington has a master's degree in public administration from the University of Nevada, Las Vegas; a master's degree in urban and regional planning from the University of Michigan; and a bachelor's degree in Geography from the University of Wisconsin. He has also received the Credentialed Manager designation from the International City/County Management Association. To receive the credential, an individual must have significant experience as a senior management executive in local government and demonstrate a commitment to high standards of integrity and to lifelong learning and professional development. Ellington is also a member of the American Institute of Certified Planners.

Ellington's first day with the City will be November 28, 2022. Assistant City Manager John Norris has served as Interim City Manager since Tarry's last day on November 2.



Crisis Stabilization Facility

Page 2



Prepare for winter weather

Page 4



Economic Development update

Page 6

CONTACT YOUR Shoreline City Council



MAYOR
KEITH SCULLY
206-801-2202
kscully@shorelinewa.gov



DEPUTY MAYOR
BETSY ROBERTSON
206-396-5807
brobertson@shorelinewa.gov



DORIS FUJIOKA McCONNELL
206-801-2204
dmccConnell@shorelinewa.gov



LAURA MORK
206-801-2207
lmork@shorelinewa.gov



EBEN POBEE
206-801-2201
epobee@shorelinewa.gov



JOHN RAMSDELL
206-330-3948
jramsdell@shorelinewa.gov



CHRIS ROBERTS
206-391-2733
croberts@shorelinewa.gov

CONTACT ALL COUNCILMEMBERS:
(206) 801-2213
council@shorelinewa.gov

CITY COUNCIL MEETINGS:
Mondays at 7:00 p.m.
Hybrid meetings: City Hall Council Chambers/online
Agendas: shorelinewa.gov/councilmeetings

North King County crisis stabilization facility

OVER THE past two years, Shoreline has built a strong coalition of cities in north King County with Bothell, Kenmore, Kirkland, and Lake Forest Park. Home to nearly 237,000 residents, the coalition is working together to address our behavioral health needs by building a behavioral health continuum of care to serve residents in our communities. Our coalition is unique in Washington. It brings together diverse jurisdictions that share a desire to find effective and innovative solutions to some of our most vexing mental health challenges.

Over the past few years, the coalition invested considerable time and resources to build the North King County RADAR and Kirkland Community Responder programs. These two programs support mental health professionals working with first responders on calls aiding individuals struggling with behavioral health challenges. In the course of this work, we have come to recognize a glaring unmet need for our community – there is no place in north King County for people experiencing a behavioral health crisis to go except our local emergency rooms and/or jails. With the recent launch of the 988 system, we know that this need will only intensify.

Over the past few months, our coalition has researched best practices, engaged crisis service providers from across the nation, undertaken multiple site visits (both virtual and in-person), and built a strong working partnership with King County, which has primary responsibility for supporting behavioral health. Overall, our research both confirmed the need for a crisis facility in our region and underscored the importance of finding the right provider partner to operate such a facility.

In the course of this work, our coalition was introduced to Connections Health Services. Connections is the founder of the 23-hour Observation model of crisis care and has driven the evolution of what is now known as the 'Arizona model' via their system-wide leadership. They currently run the nation's largest crisis receiving centers in Phoenix and Tucson, Arizona, treating over 30,000 individuals in crisis annually. They are successful in stabilizing 65-70% of individuals in crisis within 24 hours and connecting them to community-based care. Furthermore, Connections' crisis metrics have set the national standard for best practices in crisis system evaluation and performance measurement.

Connections serves as the "front door" to care by accepting all, then treating, stabilizing, and connecting individuals to the right community resources for longer-term recovery. Our coalition of cities are looking to partner with Connections in opening a crisis stabilization facility in north King County. It will be a place where our first responders and community behavioral health teams can bring individuals in crisis to get the help they need instead of taking them to already strained emergency rooms and/or jails.

Over the coming months, we will work with leaders at both the County and State levels to secure funding for this much needed crisis stabilization facility in north King County.



VOLUNTEERS WANTED!

Shoreline Walks - Lead free community walks as a volunteer walk leader.

Greenhouse Gardener - Work with CHOICES program for adults with developmental disabilities.

Twin Ponds Giving Garden - Grow and harvest food for local food banks.

Green Shoreline - Work on restoration projects in parks.

MORE INFORMATION: shorelinewa.gov/volunteers, shorelineparks@shorelinewa.gov, 206-801-2600

CDBG AND HUMAN SERVICES FUNDING



EVERY OTHER YEAR City Council reviews the City's funding allocation for human services and develops a two-year Human Services Funding Plan. The funding supports Shoreline residents' access to an array of local and regional services to enhance their well-being and address pressing needs. The plan specifies how the City will distribute money from its General Fund, the federal Community Development Block Grant (CDBG), and other restricted funding sources.

In 2017, City Council enacted a policy to use 1% of reoccurring revenue (revenue we expect to continue in the future) from the City's General Fund for human services. The City prioritizes that funding for services focused on basic needs and counseling. For the next biennium (2023-2024) that 1% funding will amount to approximately \$510,600 each year.

The Human Services Funding Plan also distributes federal CDBG funding, which provides money for programs serving low and moderate-income households. Additionally, the City has several dedicated funding sources that we must program to certain categories of services, such as domestic violence or drug and alcohol counseling.

Overall, the 2023-2024 Human Services Funding Plan will provide support to 25 programs projected to serve 3,000 residents by providing access to basic needs; mental health and counseling support; services to sustain older adults in the community; and services to support healthy youth and families.

City Manager names Kelly Park as Shoreline's new Police Chief

CITY MANAGER Debbie Tarry has selected Kelly Park of the King County Sheriff's Office to be the City's new Police Chief. Park replaces Shawn Ledford who was promoted to Chief of the Patrol Operations Division of the King County Sheriff's Office.

Park has over 20 years of experience with the King County Sheriff's Office. Most recently, she was the Operations/Administration Captain for the Shoreline Police Department. Prior to her role in Shoreline, Park was the Internal Investigations Unit Commander for KCSO. She was responsible for leading the department that reviews accidents, use of force and pursuits, and all alleged misconduct by department personnel. Prior to that she served as the Operations Captain for the Southwest Precinct in Burien and then Sound Transit Police. In addition to these roles, Park has also served KCSO as a Recruiter; Internal Investigations Detective Sergeant; Patrol and RADAR Sergeant in Shoreline; the Advanced Training Unit Sergeant for the department; and for Court Protection at King County Court House. While at KCSO, Park has also served in other capacities, including Detective, Patrol Officer, and

School Resource Officer, for the cities of Shoreline and Woodinville.

"Captain Park will be a great Police Chief for the City of Shoreline," said City Manager Debbie Tarry. "I heard consistently from those that participated in the screening process, including community members, that they appreciated Kelly's thoughtful approach to answering questions, her knowledge and breadth of experience, her confidence, her commitment to equity, and her understanding of the need to support our police staff."

"I am honored and humbled in my acceptance of the Shoreline Police Chief position," said Park. "I pledge my continued service to the community; treating everyone with the dignity, equity, and respect we all deserve; and growing together. I am very proud to be a member of our police department and this team."

The City's Leadership Team along with two representatives from the Shoreline Police Department; a community panel made up of Shoreline residents and business owners; and the City Manager interviewed two candidates whose applications were forwarded by the King County Sheriff's



Office. In addition, the City hosted a virtual public forum to allow the candidates to introduce themselves to the community and to answer questions.

Rather than administering its own police force, the City of Shoreline contracts with King County Sheriff's Office for police services. Officers work for King County but are dedicated to Shoreline so they get to know the community. The police chief reports to the King County Sheriff and the Shoreline City Manager.

Park's first day as Police Chief was October 1, 2022.



PREPARE FOR FALL AND WINTER STORMS

FALL AND WINTER STORMS are common in the region and we are committed to helping the community prepare through advanced planning, education, and awareness.

Visit shorelinewa.gov/stormready to find out how you can better prepare for winter storms.

Heavy rain and flooding

Prepare your property by cleaning out gutters, downspouts, and all other rainwater drainage that you have. Remove all leaves and debris so that rainwater can flow away from your home. Redirect downspouts and other drainage flows to keep water away from your home.

Help prevent neighborhood flooding by clearing leaves, debris, and snow from storm drains. Keep roadside ditches empty. Never put soil, debris, or fill of any kind into the ditch near your home. Ditches are critical to moving water away from homes and neighborhoods and returning it back to natural waterways. Do not rake, sweep, or blow leaves, pine needles, grass, or any debris onto the sidewalk or streets. This can clog the pipes that carry rainwater and cause flooding. Throw out yard waste in your green bin.

If you see a storm drain or ditch back up during a storm that you cannot clean, report it immediately to the City at 206-801-2700.

Power outages

If outside, do not touch or go near any downed power lines. If inside, never use a generator, charcoal, or gas grill in an enclosed space, including your home and garage. These emit carbon monoxide, which is a poisonous gas you cannot see or smell but can kill a person in minutes. Carbon monoxide poisoning is a serious threat especially when families look for alternate ways to heat their homes during a power outage.

Seattle City Light's website allows you to check the status of a power outage by going to seattle.gov/light/sysstat. You can contact Seattle City Light for more information through their website or by calling 206-684-3000.

Snow removal

When it snows, our plows concentrate their efforts on arterial roads (primary routes) to accommodate fire, medical, and police responses, as well as Metro transit, and school buses. As long as snow continues to fall, we will only plow primary routes. Once the snow has stopped and all primary routes are clear, plows will move to secondary roads before moving into neighborhoods. If at any time it starts snowing again while plows are clearing secondary or neighborhood streets, the plows will return to the primary routes and the process of clearing streets will begin again. While we will eventually get to all streets, it might take several days after the final snow before residents see a plow on their street. Snow plowing route maps are available at shorelinewa.gov/stormready.

Property owner responsibilities - clear your sidewalks

Shoreline property owners are responsible for clearing snow and ice off driveways and sidewalks near their property, including the ridge of snow left along the edge of driveways by snowplows. We cannot plow individual driveways. If you plow snow or have it removed from your property, do not place the snow in the public right-of-way. This is illegal and can lead to hazardous street conditions. Please keep the removed snow on your own property or arrange to have the snow removed to another private property location. Also, to help prevent pooling water or flooding, please help clear catch basins to make way for runoff from melting snow.

Garbage & recycling pick-up

Icy streets may prevent Recology from collecting garbage and recycling on designated days. To learn more about adverse weather and holiday policies, visit recology.com or call 206-763-4444.

Protect your pipes

Every winter, frozen pipes cause damage in homes, apartments, and businesses. When frozen pipes thaw, they can cause cracks, flooding, and water damage. To avoid this, keep your heat on at least 40 degrees, especially when on vacation.

MORE INFORMATION

shorelinewa.gov/stormready

Pre-design work begins on Parks Bond projects

THE CITY has started the pre-design phase for the 2022 voter-approved parks bond projects. We have contracted with sub-consultants who are performing survey, Geotech, critical areas, arborist, and cultural resources assessments at all eight parks. Staff shared information with community members this summer at Celebrate Shoreline and the Ballinger Friendship Festival, and continue to look for other events where we can update residents on the project status.

Currently we are studying each of the parks and we will soon reach out to you for your input. Your thoughts on the look and feel of the individual parks will help influence their design as we get rolling. We look forward to sharing developments with you as the design progresses in the coming months. Staff are providing monthly updates at the PRCS/Tree Board meetings that are open to the public.

MORE INFORMATION

shorelinewa.gov/parkbond

Parks Bond Project Manager Jacob Bilbo
jbilbo@shorelinewa.gov, 206-801-2358



COMPREHENSIVE PLAN AMENDMENT PROPOSALS DUE BY DECEMBER 1, 2022

EVERY YEAR, the City goes through a Comprehensive Plan amendment process. The annual amendment process is an opportunity for individuals to propose changes to Shoreline's Comprehensive Plan. Proposed amendments usually address changing conditions or emerging issues.

If you have a change you would like to see in the Comprehensive Plan, you can send your proposed changes to the City's Planning and Community Development Department (P&CD). You can find Comprehensive Plan Amendment Application materials on the City's website at shorelinewa.gov/complan.

To be eligible for consideration, applications must be received by 5:00 p.m. December 1, 2022.

Mail applications to:

Senior Planner Steven Szafran, AICP
Planning & Community
Development Department
17500 Midvale Avenue North
Shoreline, WA 98133

OR

Email applications to:

sszafran@shorelinewa.gov

Once we have received all the amendment proposals, City Council will develop a list of amendments they wish to study throughout 2023.

MORE INFORMATION

shorelinewa.gov/planning

Steven Szafran

sszafran@shorelinewa.gov

206-801-2512



DID YOU KNOW there is a statewide "Safety Stop" law that allows bicyclists, on human powered or electric-assisted bikes, to treat stop signs as yield signs? In October 2020, Washington State enacted a "Safety Stop" law allowing for bicyclists to treat stop signs as yield signs, except for school bus stop paddles and railroad crossings, which still require a full stop.

While this new law may seem counterintuitive, multiple studies have shown it can improve safety for bicyclists. It also increases intersection efficiency for all users, which is a bonus. Idaho was the first state to legalize the Safety Stop and saw a 14% decrease in bicyclist injuries the following year. Washington is the fifth state to enact the law. Bicyclists must still follow the rules of the road as they apply to yield conditions, including yielding right of way to crossing pedestrians.

You can find details of the new law in RCW 46.61.190.

ECONOMIC DEVELOPMENT UPDATE

IN 2012, after extensive community outreach and engagement, the City adopted its Comprehensive Plan Update. The Plan set the City's economic development goals for the next 10 years. Looking back on those 10 years, we can see how major public and private investment has reshaped the built environment of our community. In addition to the Comprehensive Plan, the Council has also adopted two Economic Development Strategic Plans that further outlined the City's key action items to spur investments and improvements in the city. Projects recently completed or getting underway now represent years of work by the Planning Commission, City Council, staff across multiple departments, and community members.

Catalyze Shoreline Place

For more than 10 years, the City has been working on one of the key action items from the most recent Economic Development Strategic Plan – Catalyze Shoreline Place. That work includes the 2019 Development Agreement governing the redevelopment of the former Shoreline Sears property over

the course of 20 years. As part of that redevelopment, we expect a new road (known as C Street) to open across the middle of the Shoreline Place Community Renewal Area (CRA) soon. The new road will improve the flow of vehicles, bikes, and pedestrians. The tree-lined street will connect the upper and lower areas of Shoreline Place, helping to frame the future plaza spaces, retail, and living spaces Merlone Geier will build as part of "Block D." We expect Block D to enter construction next year.

With a new, more centrally-located way to travel in a straight line across the CRA, the existing lower roadway will make way for more retail and mixed-use investments. These investments will embrace and activate the newly redesigned Westminster Way. The developer expects to complete the retail buildings forming the new gateway at 155th and Westminster Way in the summer of 2023. They expect to make announcements about new commercial tenants in the coming months.

Igniting Station Area Growth

Another action item named in the Strategic Plan is 'Igniting Station Area Growth' as a key economic devel-

opment initiative. City Council, the Planning Commission, and staff have worked on refinements to the 185th and 148th Street Station Subarea Plans to address a lack of redevelopment in the areas closest to the stations. That work is bearing fruit now as several key sites have begun transitioning into active development.

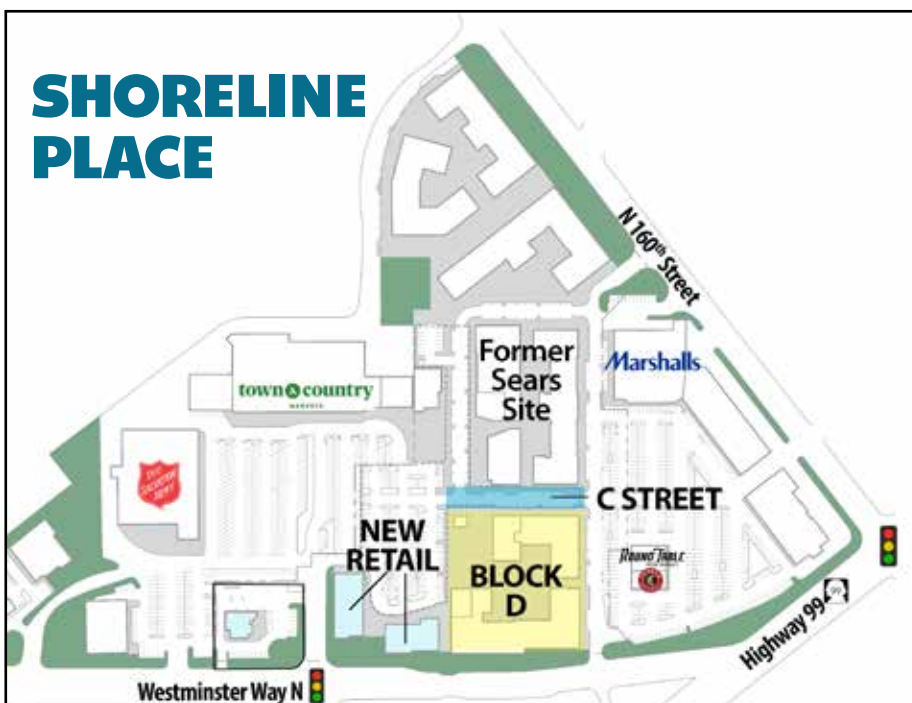
Evergreen Point Group will build a new midblock road connecting NE 145th Street to NE 147th Street just west of I-5 as part of their 241-unit development known as The Line. We expect completion in late 2024. This development will include ground floor commercial space on 145th Street. Next door to this development will be Shea Properties' 547-unit development known as Convergence, which we expect to begin construction in December.

Next to the 185th Street Station, site-clearing activities for American Capital Group's Kinect @ Shoreline apartments began in October with construction expected to be complete in late 2024. At that time, approximately 2,000 square feet of station-oriented commercial space is expected to be available for lease as well.

These developments help create more housing choices for Shoreline residents and address our regional housing shortage. One of the best ways we can address our affordable housing shortage is to create more housing. Demand for housing in the region far outstrips the supply, which drives costs up for everyone. By creating more housing, we can help take pressure off the housing market and stabilize, and possibly even reduce, housing costs. These new developments also provide more commercial space that residents say they want to see in their neighborhoods.

MORE INFORMATION

Economic Development Manager
Nathan Daum
ndaum@shorelinewa.gov
206-801-2218





Salmon Seeson

See salmon safely
from August to November
in King County watersheds!



The Cities of Shoreline and Lake Forest Park happily present: Salmon SEESon!

SALMON SEESON is a program that helps people watch adult Pacific salmon return to streams and rivers around Puget Sound to spawn. Shoreline and Lake Forest Park have partnered together to include three viewing sites: Lyon Creek Waterfront Preserve, Blue Heron Park, and Pfinst Animal Acres Park. Each site has signs posted showing where to go and what you'll expect to see. You can find more information on these sites at <http://bit.ly/salmonseeson>. If you decide to visit these sites, please remember to recreate responsibly, leave no trace, and contribute to an inclusive experience for all.

Leashed, Licensed, **LOVED**

WE GET IT; your dog likes to run, play catch, and be with other dogs. That's why the City of Shoreline has three off-leash dog areas and is adding two more! Go to shorelinewa.gov/offleashdog to learn more about them.

However, if you aren't in one of our off-leash dog areas, then the law requires that your dog be leashed. While in a park, around the city, or in your neighborhood, all dogs are required to be on a leash.

Why leash your dog?

- It keeps your dog and other dogs and animals safe.
- It's courteous to other park users – not everyone feels comfortable around dogs, including other dogs.
- It's the law and you could be fined – \$25 for the first violation and \$50 for each violation thereafter within a year.



FREE & SAFE BATTERY RECYCLING



Shoreline residents
can safely dispose of
household batteries
free of charge.

Batteries contain hazardous materials that can harm the environment and cause fires and other safety issues at waste management facilities. But it's not all negative. Your used batteries also contain valuable materials that can be separated and recycled to create new products such as silverware, steel, and even new batteries!

As a Shoreline resident, you can dispose of your used household batteries free of charge at select drop-off locations across the city. The most common household batteries are accepted for recycling: alkaline, button, and rechargeable batteries.* When you dispose of your household batteries at select drop-off locations you not only give your spent batteries a new life, but also contribute to a safe and healthy Shoreline.

*Note: Car batteries and lead acid batteries are not accepted at all drop-off locations.

Scan the QR code
or visit shorelinewa.gov/recycling to find
the FREE drop-off
location nearest you!



November 2022 Vol. 24 No. 9
CITY OF SHORELINE
CURRENTS

Currents is produced by the
Shoreline City Manager's Office
Contact the City:
(206) 801-2700

**Alternate formats
available upon request**



Currents is printed on
post-consumer recycled
paper with soy-based ink.



Web: shorelinewa.gov

facebook.com/shorelinewa

twitter.com/shorelinewagov

youtube.com/cityofshoreline



17500 Midvale Avenue N
Shoreline, WA 98133-4905

PRSR STD
US Postage
PAID
Seattle, WA
Permit No. 248

ECRWSS
POSTAL CUSTOMER

SHORELINE FARMERS MARKET
HARVEST MARKET
SATURDAY, DEC. 17
10:00 AM - 2:00 PM
192ND & AURORA AVE N
Local crafts and
artisanal foods for
great holiday gifts!
Live holiday music
Food trucks
SHORELINEFARMERSMARKET.ORG

**WINTER
PORCH
LIGHT
PARADE
2022**

Communities Shining Bright
Bothell | Kenmore | Lake Forest Park | Shoreline

December 1st - 31st

See all four cities transform into a magical wonderland of lights!
Enter your creative light display to be included on the virtual map.
Take a tour of the displays during the month of December.
<https://bit.ly/winterporchlightparade>