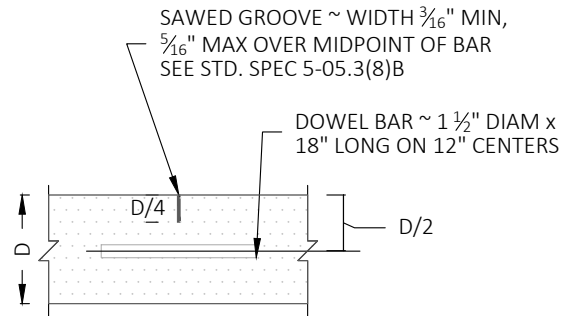


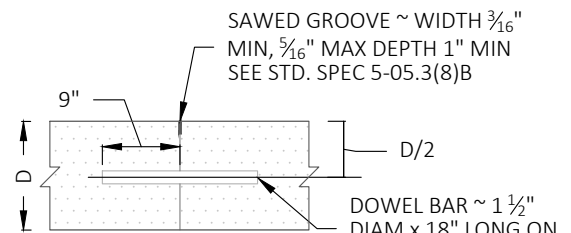
NOTES:

1. MATERIAL - WSDOT CONCRETE CLASS 4000psi.

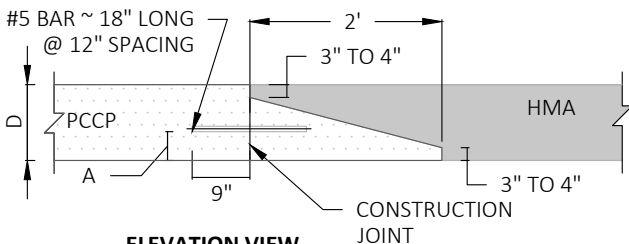
PLAN VIEW



**SECTION VIEW
TRAVERSE CONTRACTION JOINT**

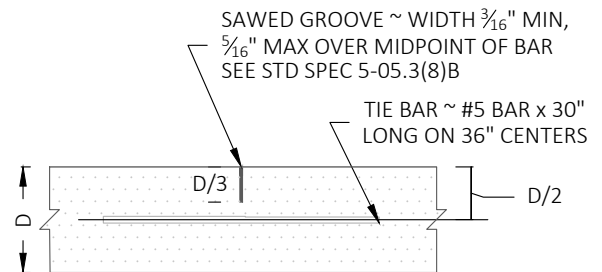


**SECTION VIEW
TRAVERSE CONSTRUCTION JOINT**

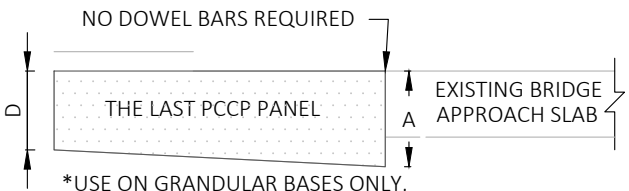


**ELEVATION VIEW
HMA TRANSITION DETAIL**

SLAB THICKNESS (D)	A
12"	5"
D	D/2 - 1"

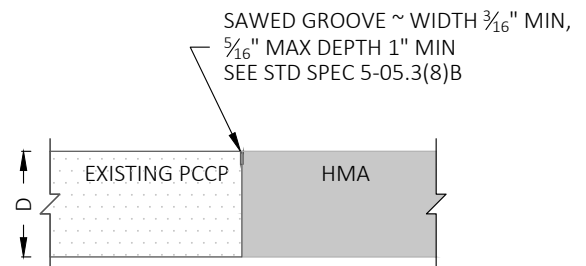


**SECTION VIEW
LONGITUDINAL CONTRACTION JOINT**

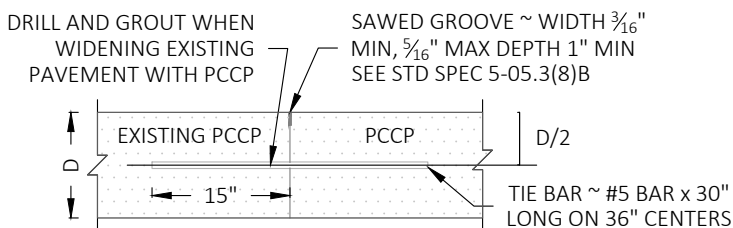


**ELEVATION VIEW
EXISTING APPROACH SLAB TRANSITION DETAIL**

SLAB THICKNESS (D)	A
12"	15"
D	1.25" - D



**SECTION VIEW
PCCP TO HMA LONGITUDINAL JOINT**

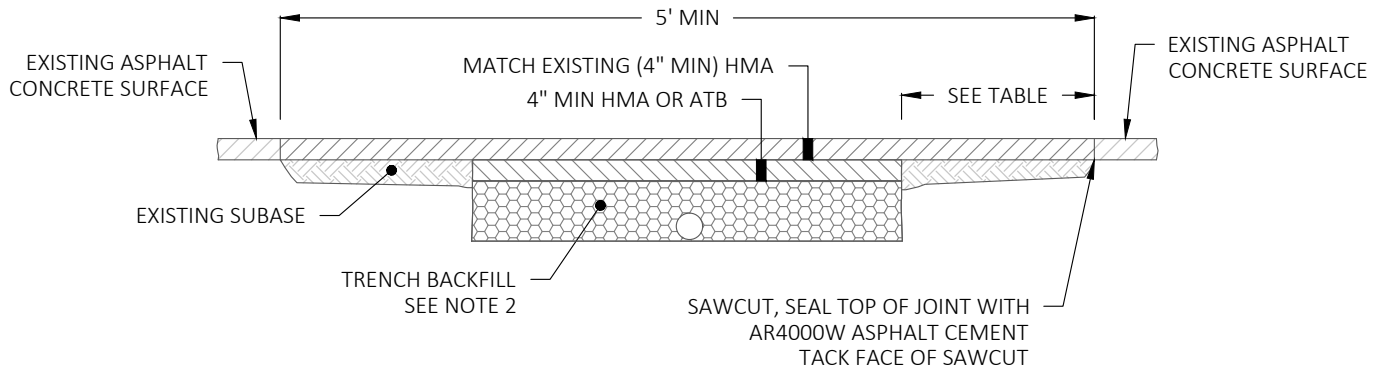


**SECTION VIEW
PCCP TO PCCP LONGITUDINAL CONTRACTION JOINT**



PUBLICATION DATE:	REVISION DATE:
STANDARD DETAIL NUMBER: 801	SCALE: NOT TO SCALE

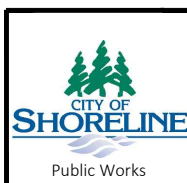
**RIGID PAVEMENT RESTORATION
DETAIL**



PAVEMENT CUT DIMENSIONS	
TRENCH DEPTH (FT)	MINIMUM CUT BEYOND TRENCH (FT) ALL FOUR SIDES
UP TO 4	1.0
MORE THAN 4 UP TO 6	1.5
MORE THAN 6 UP TO 8	2.0
10	2.5
12	3.0
14	3.5
16	4.0
18	4.5
20	5.0
PAVEMENT LESS THAN 5 YEARS OLD	10.0

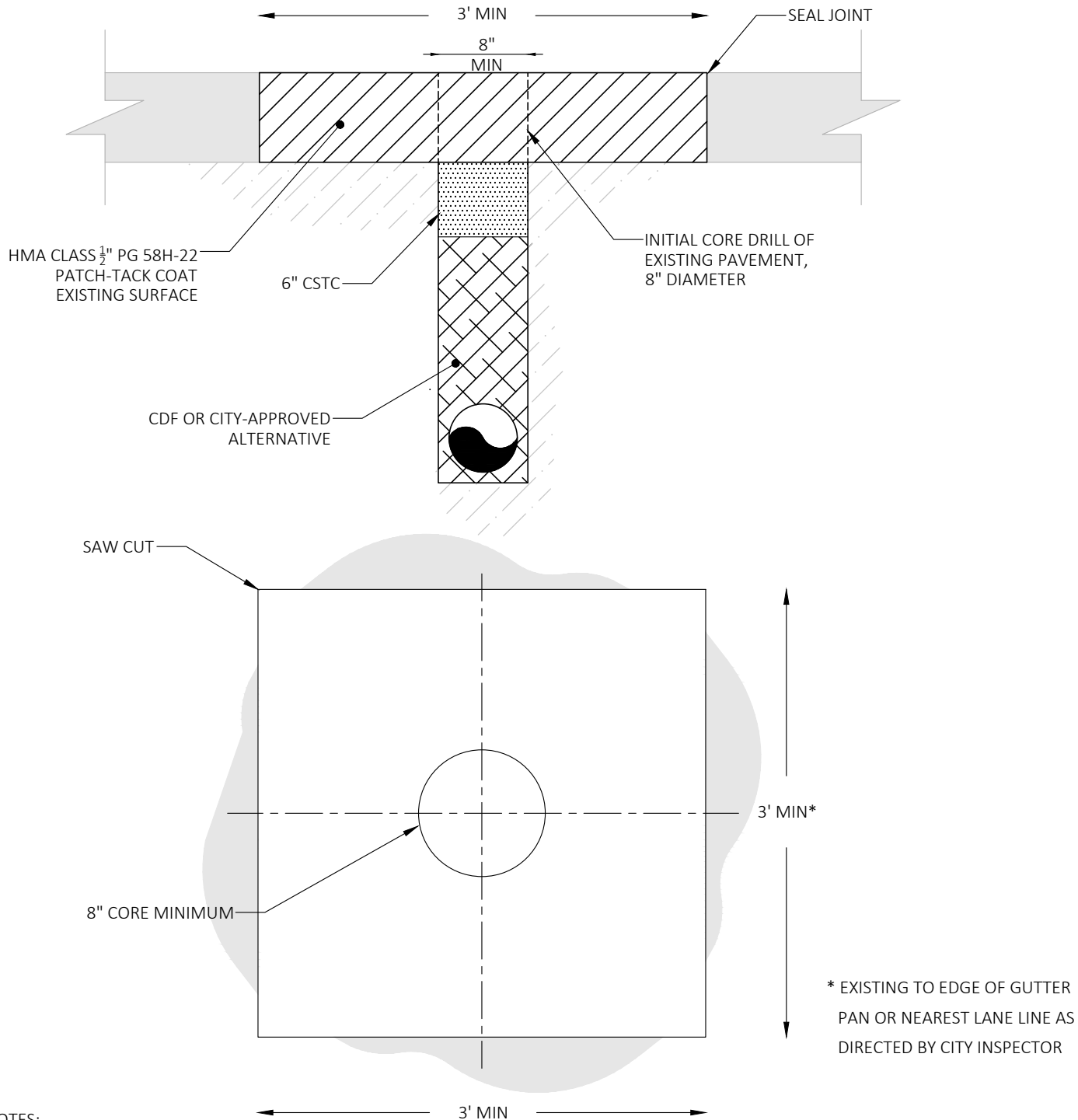
NOTES:

1. ASPHALT CONCRETE MIX SHALL BE HMA.
2. ABOVE PIPE ZONE TRENCH BACKFILL SHALL BE CRUSHED SURFACING COURSE MATERIAL COMPACTED AT 95%. CDF MAY BE USED AS AN ALTERNATIVE. SEE WSDOT STD B-55.20-02 FOR PIPE ZONE BEDDING.
3. SAWCUT LIMITS MAY BE REVISED BASED UPON EXISTING CONDITIONS. PATCH MAY NEED TO EXTEND TO CONFIDENT ASPHALT.
4. SAWCUTS NEED TO BE NEAT AND CLEAN PRIOR TO PAVING.



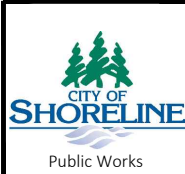
PUBLICATION DATE:	REVISION DATE:
STANDARD DETAIL NUMBER: 802	SCALE: NOT TO SCALE

FLEXIBLE PAVEMENT PATCHING



NOTES:

1. THE EXISTING PAVEMENT SHALL BE CUT FULL DEPTH WITH A MINIMUM EIGHT INCH DIAMETER CORE DRILL. THE SUB-BSE MATERIAL SHALL BE REMOVED USING A VACUM EXCAVATOR, KEEPING THE EXCAVATION AS MINIMAL AS POSSIBLE.
2. BACKFILL THE EXCAVATION WITH CONTROLLED DENSITY FILL (CDF) OF CITY-APPROVED ALTERNATIVE.
3. REPAIR THE PAVEMENT SECTION WITH HMA CLASS ½" PG 58 H -22 AND SEAL THE JOINT. ASPHALT DEPTHS SHOULD 8" OR MATCH EXISTING, WHICHEVER IS GREATER.
4. FOR MORE THAN 3 CORES WITHIN 50 FEET EDGE TO EDGE OF EACH OTHER IS ANY DIRECTION, OR 12 OR MORE CORES WITHIN A BLOCK, PAVEMENT REPAIR WILL BE CONSIDERED A TRENCH SUBJECT TO THE REPAIR PER EDM.
5. CDF SHALL BE PER SEC 2-09.1(1) E OF WSDOT STD SPEC.



PUBLICATION DATE:	REVISION DATE:
STANDARD DETAIL NUMBER: 803	SCALE: NOT TO SCALE
PAVEMENT RESTORATION FOR WINDOWS CUTS	