

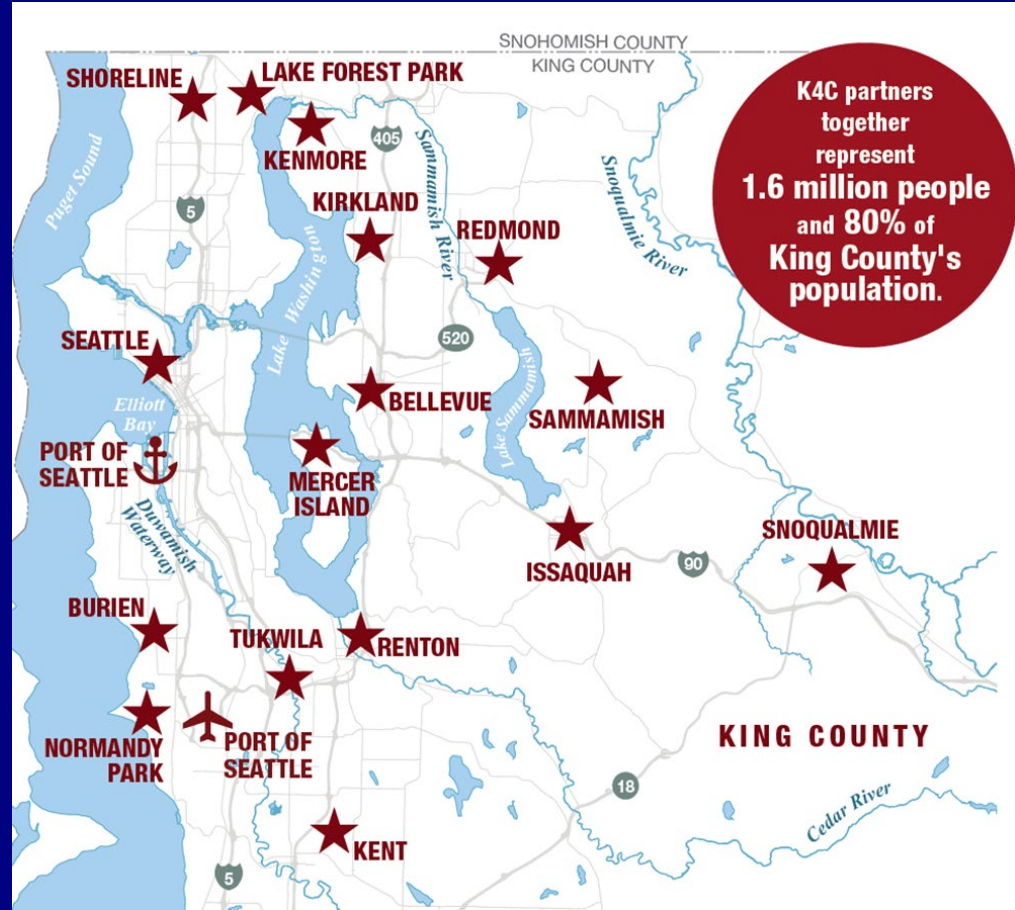
Climate Action Plan Update

October 10, 2022

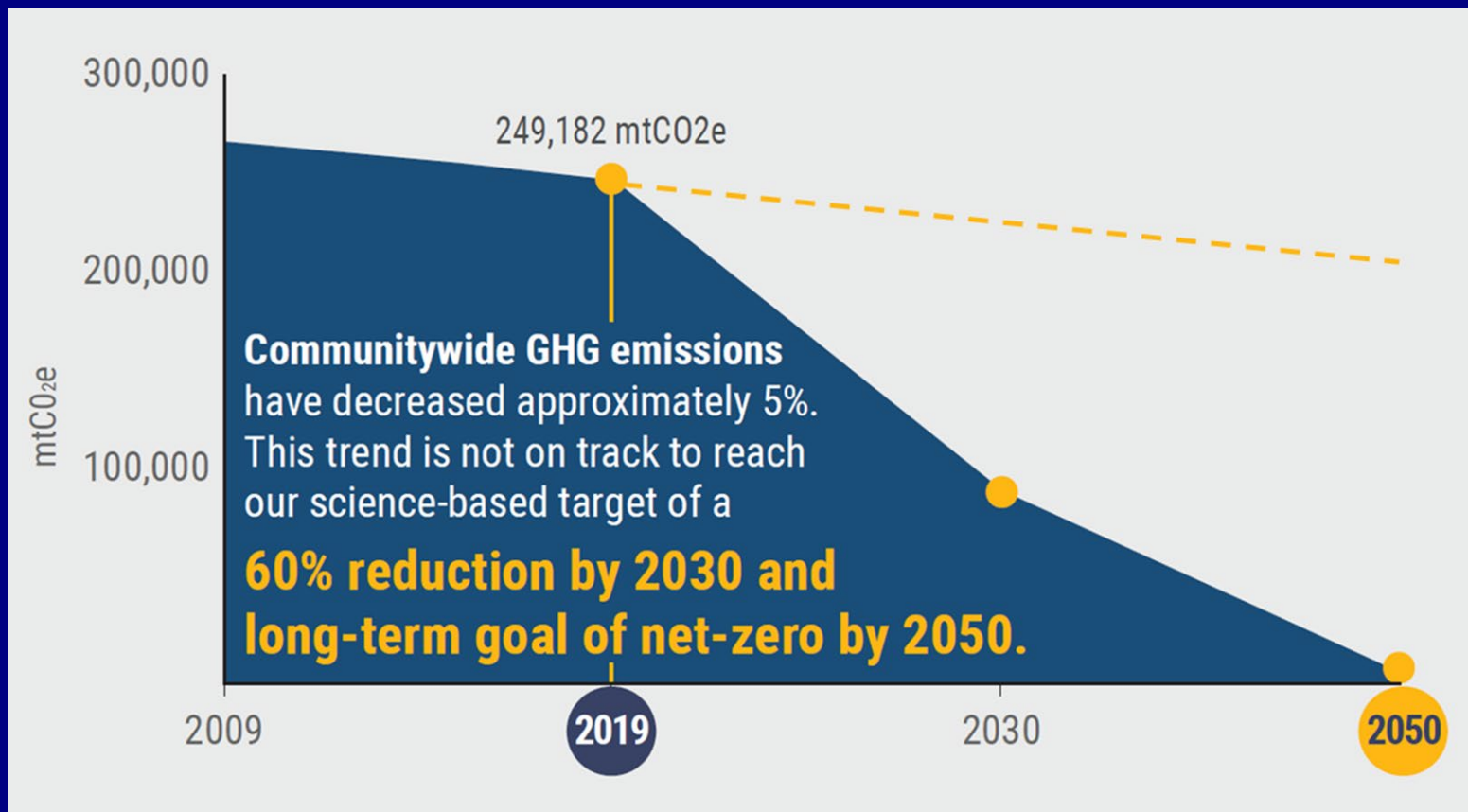


CAP Background

- 2013 CAP
- K4C Joint Commitments
- Comp Plan 1.5 °C Goal
- Race to Zero and SBTs:
 - 60% by 2030
 - 95% and Net-Zero by 2050

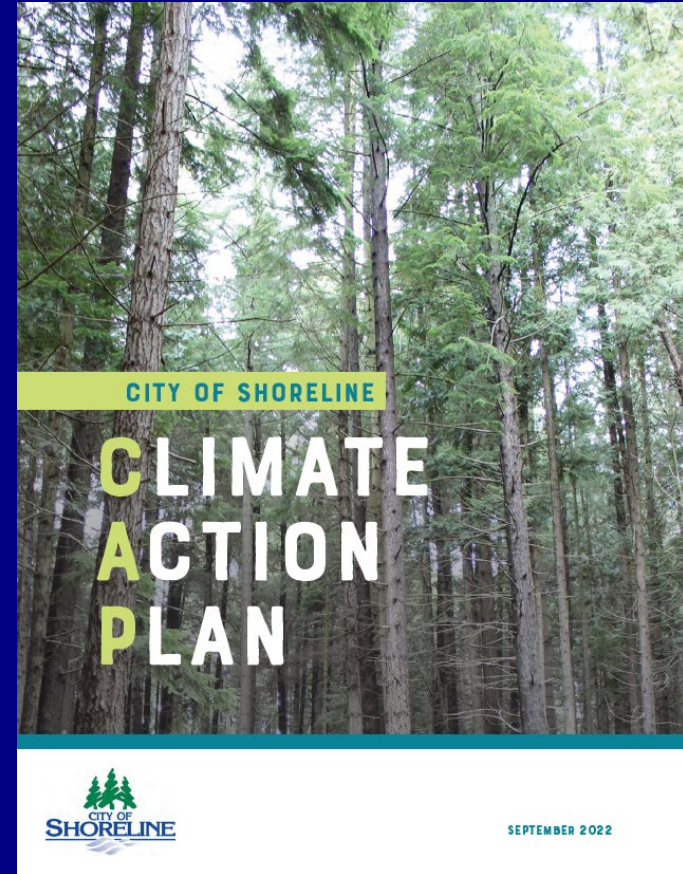


Shoreline GHG Emissions 2009-2019

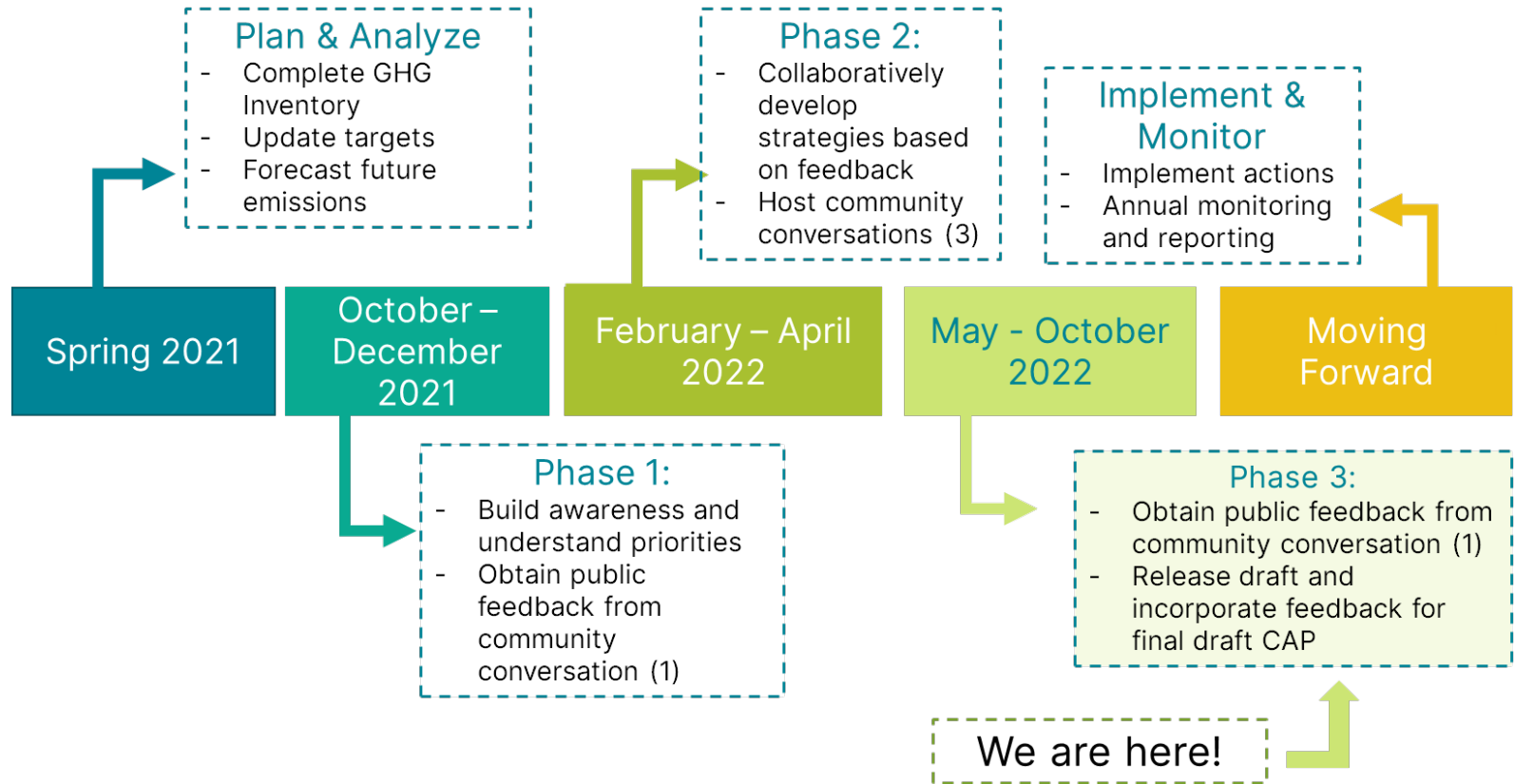


Climate Action Plan update

1. Identify high-impact actions to reduce emissions and meet targets
2. Increase carbon sequestration by trees and ecosystems
3. Increase community resilience to climate impacts

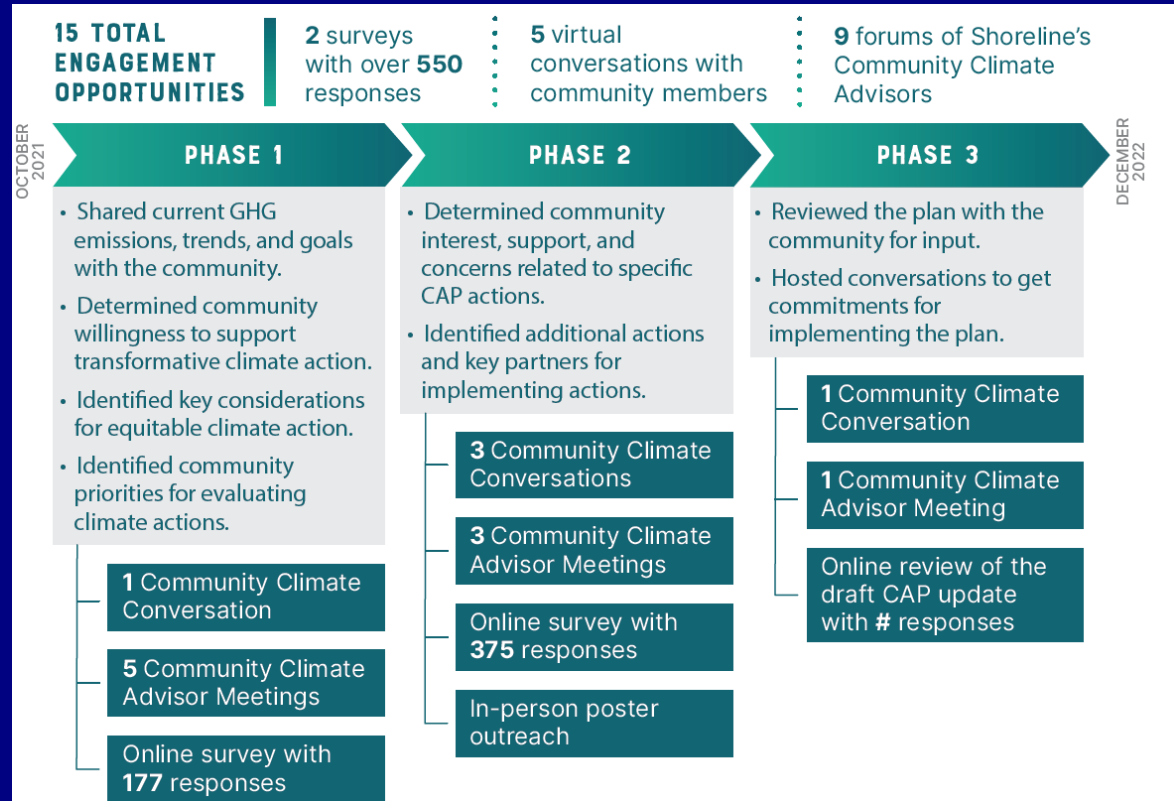


CAP Update Timeline



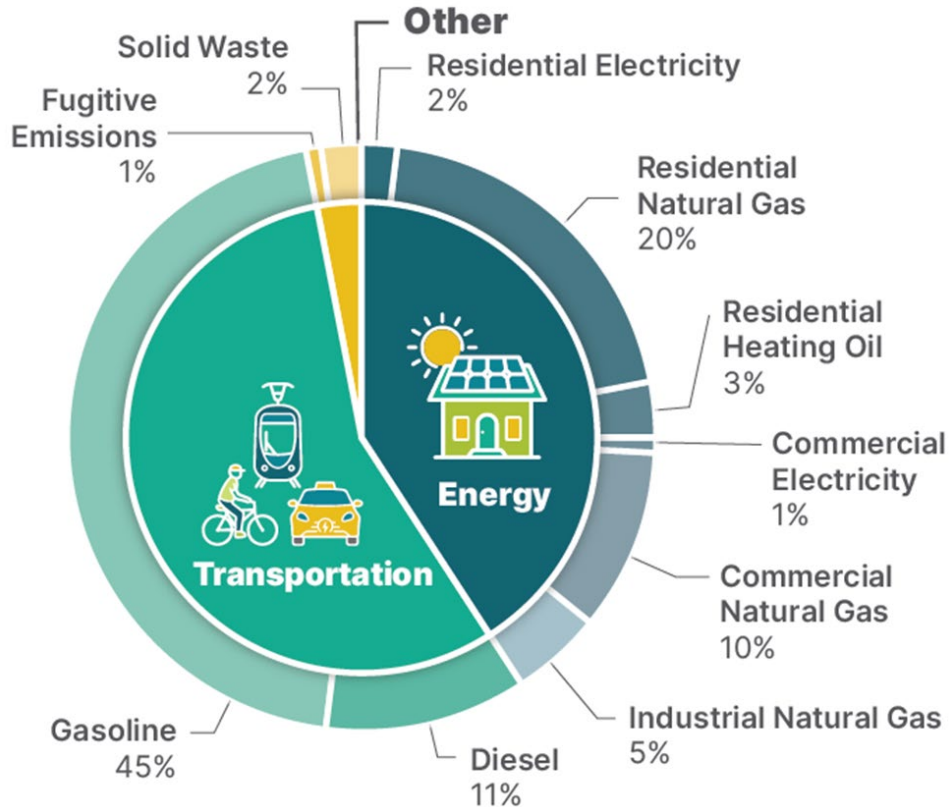
Community Engagement

- Community Climate Advisors
- Virtual events
- Surveys
- In-person outreach
- Community presentations



Sources of GHG Emissions (2019)

Sources of Shoreline's community-wide greenhouse gas emissions in 2019 (249,180 MTCO₂e)



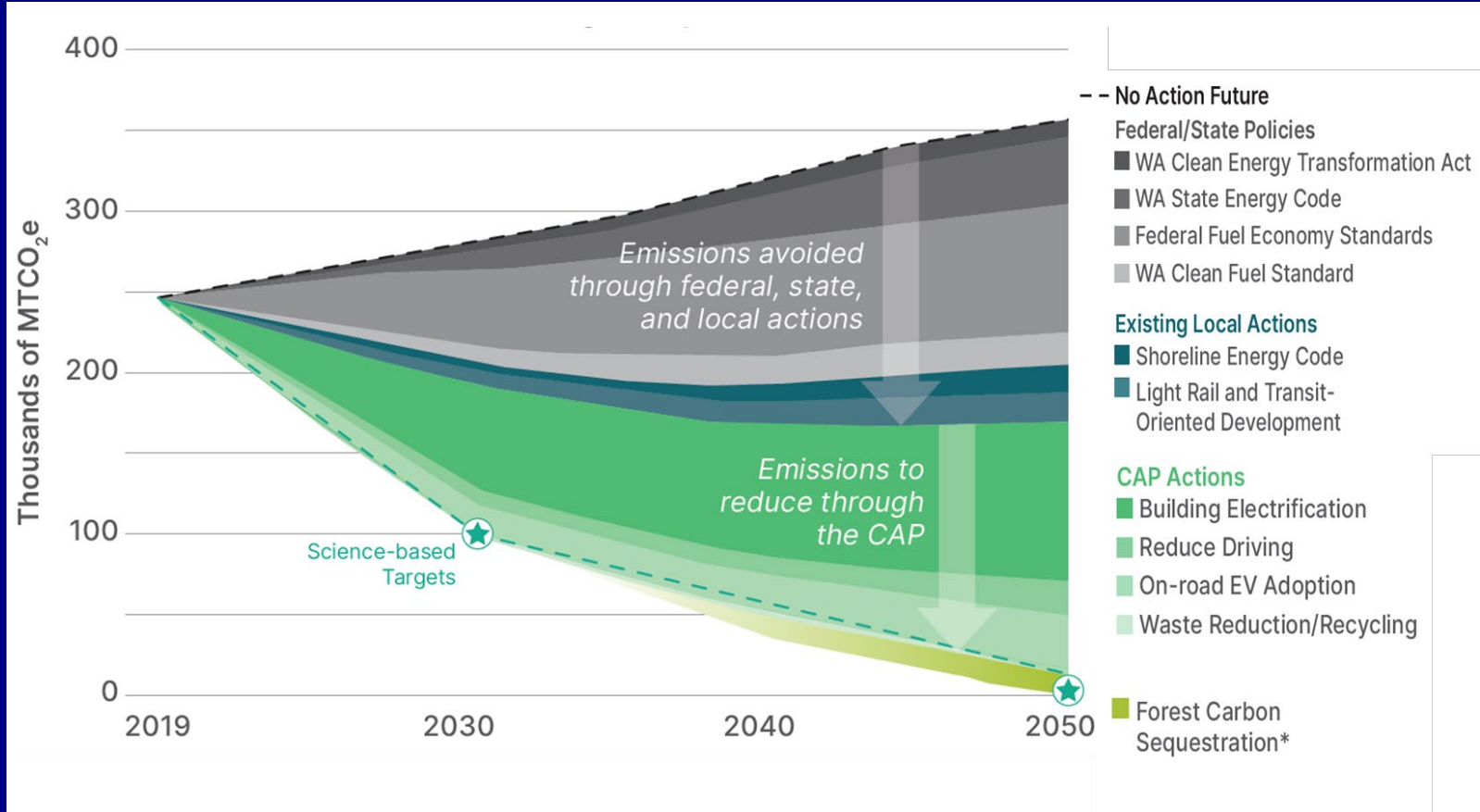
Transportation fuel = 56%

Building heating fuels = 38%

Electricity = 3%

Solid waste (disposal) = 2%

Future Emissions – Wedge Analysis



Focus Areas and Strategies



Focus Area: Transportation and Mobility (TM)	Number of Actions
<ul style="list-style-type: none"> • Strategy TM-1: Reduce community-wide driving. • Strategy TM-2: Accelerate electric vehicle (EV) adoption. 	25



Focus Area: Buildings and Energy (BE)	
<ul style="list-style-type: none"> • Strategy BE-1: Electrify space and water heating for new and existing buildings. • Strategy BE-2: Increase energy efficiency of new and existing buildings. • Strategy BE-3: Increase renewable energy generation and access. • Strategy BE-4: Support affordable green buildings that conserve water and protect habitat. 	18



Focus Area: Zero Waste (ZW)	
<ul style="list-style-type: none"> • Strategy ZW-1: Reduce per capita waste generation, especially wasted food. • Strategy ZW-2: Increase diversion rates and access to recycling and composting services. 	16

Focus Areas and Strategies



Focus Area: Ecosystems and Sequestration (ES)

- Strategy ES-1: Maintain and increase tree canopy and urban forest health.
- Strategy ES-2: Increase soil sequestration in natural and landscaped areas.

15








Focus Area: Community Resilience and Preparedness (CRP)

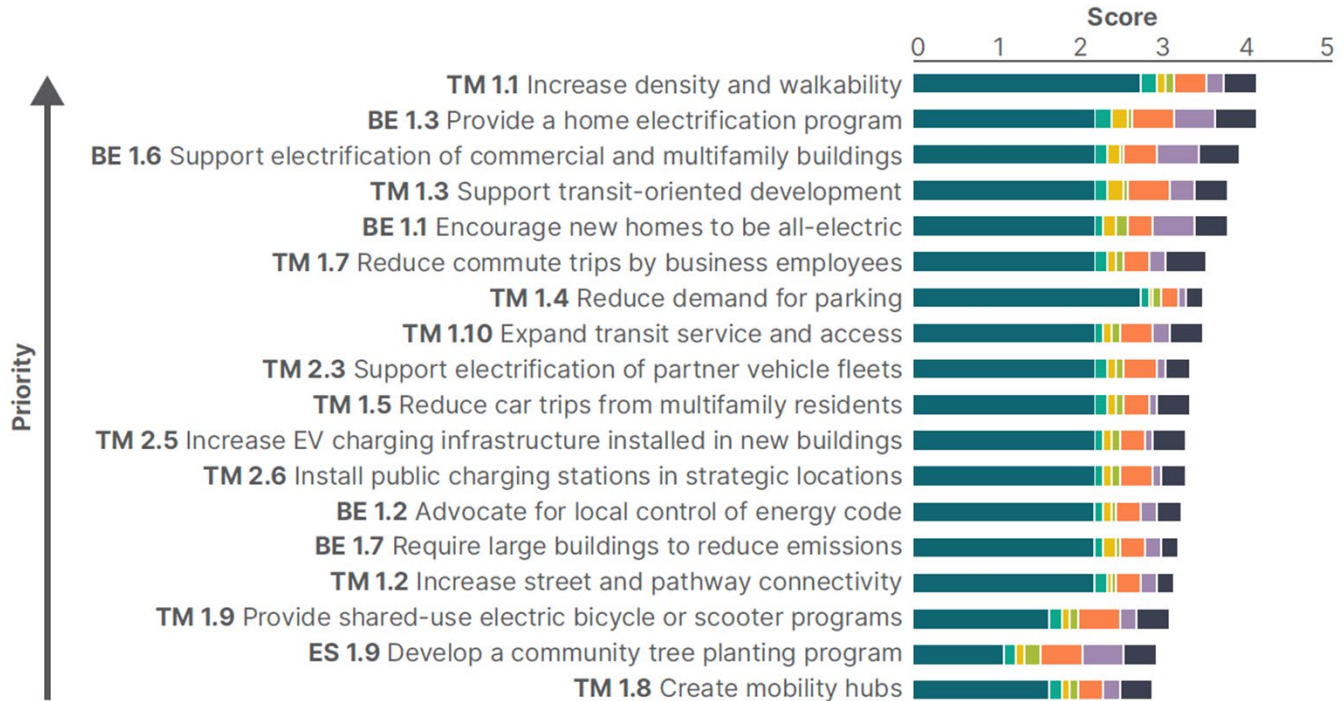
- Strategy CRP-1: Ensure that new buildings, land use decisions, and public infrastructure improvements increase resilience to current and future climate impacts.
- Strategy CRP-2: Strengthen community and municipal emergency preparedness in consideration of predicted climate impacts such as extreme heat, flooding, wildfire smoke, and drought.
- Strategy CRP-3: Increase community awareness of climate change impacts and mitigation and support community-based efforts that increase resilience.

15

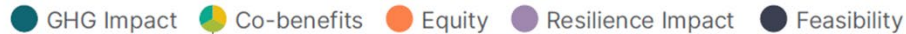
Multi-Criteria Analysis

	Criteria	Weight	Definition
	GHG Emissions Impact	55%	Reduces GHG emissions
	Co-benefits	15%	Provides co-benefits related to improving health/ quality of life, providing cost savings to community, and/or supporting ecosystem health
	Equity	10%	Benefits or supports communities that face historic inequities
	Resilience Impact	10%	Increases community resilience to climate impacts
	Feasibility	10%	Is possible to implement based on level of community support and political, technical, and regulatory feasibility/barriers

MCA - Results



Criteria:

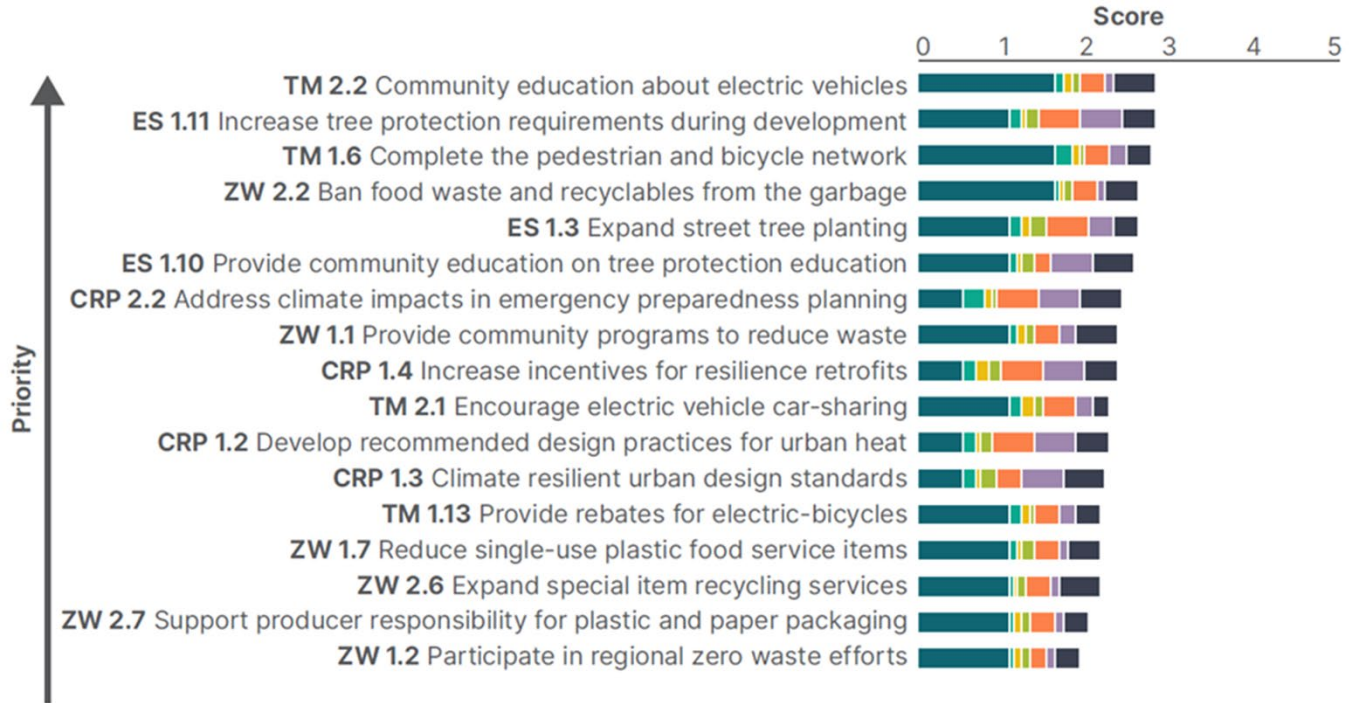


Health/Quality of Life

Cost Savings to Community

Ecosystem Health

MCA - Results



Top Actions: Transportation & Mobility

T-1: Reduce Community-wide driving

- TM 1.1 - Increase density and walkability
- TM 1.3 - Support transit-oriented development
- TM 1.7 - Reduce commute trips by business



Top Actions: Transportation & Mobility

T-2: Accelerate Electric Vehicle Adoption

- TM 2.3 - Support electrification of partner fleets
- TM 2.5 - Increase EV charging infrastructure installed in new
- TM 2.6 - Install public charging stations in strategic locations

Top Actions: Buildings & Energy

- BE 1.3 – Provide a home electrification program
- BE 1.6 – Support electrification of commercial and multifamily buildings
- BE 1.1 – Encourage new homes to be all-electric



Source: Mitsubishi



Source: Seattle City Light

Top Actions: Zero Waste

- **ZW 2.2 - Ban food waste and recyclables from the garbage**
- **ZW 1.1 - Provide community programs to reduce waste**
- **ZW 1.7 - Reduce single-use plastic food service items**



Top Actions: Ecosystems & Sequestration

- **ES 1.9 - Develop a community tree planting program**
- **ES 1.11 - Increase tree protection requirements during development**
- **ES 1.3 - Expand street tree planting**



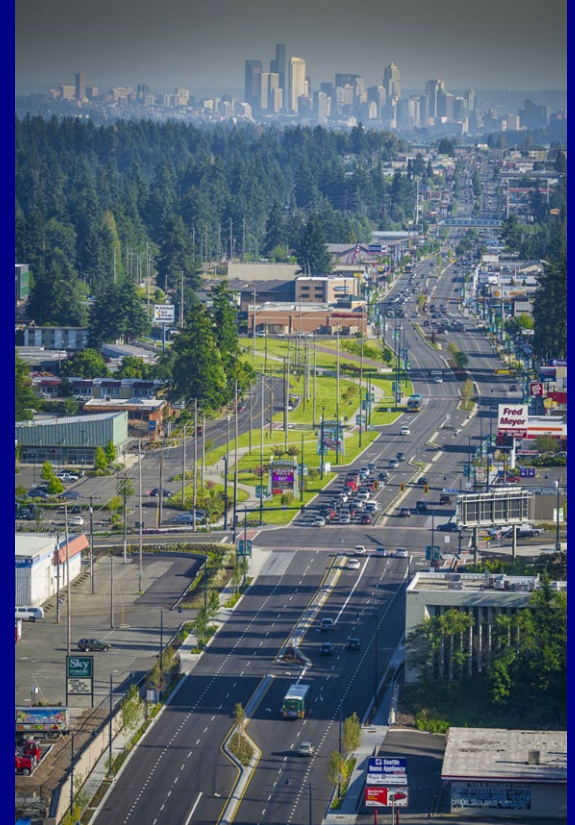
Top Actions: Community Resilience & Preparedness

- CRP 2.2 - Address climate impacts in emergency preparedness planning
- CRP 1.4 - Increase incentives for resilience retrofits
- CRP 1.2 - Develop recommended design practices for urban heat



Next Steps

- Phase 3 engagement summary
- Final edits
- Refine cost analysis and budget request
- Finalize key performance indicators and implementation matrix
- November 21 Meeting



Questions

