



1ST Avenue NE (N 145th St – N 155th St)
Sidewalk Improvements Project

Virtual Open House

September 29, 2022



Neighborhood Meeting Agenda

- **Organizer Introductions**
- **Project Area**
- **Project Description**
- **What we have done to date**
- **Design Alternative 1A**
- **Anticipated Permits**
- **What to Expect Next**
- **How comments are utilized**
- **Additional Project Information**
- **City Contact Information**



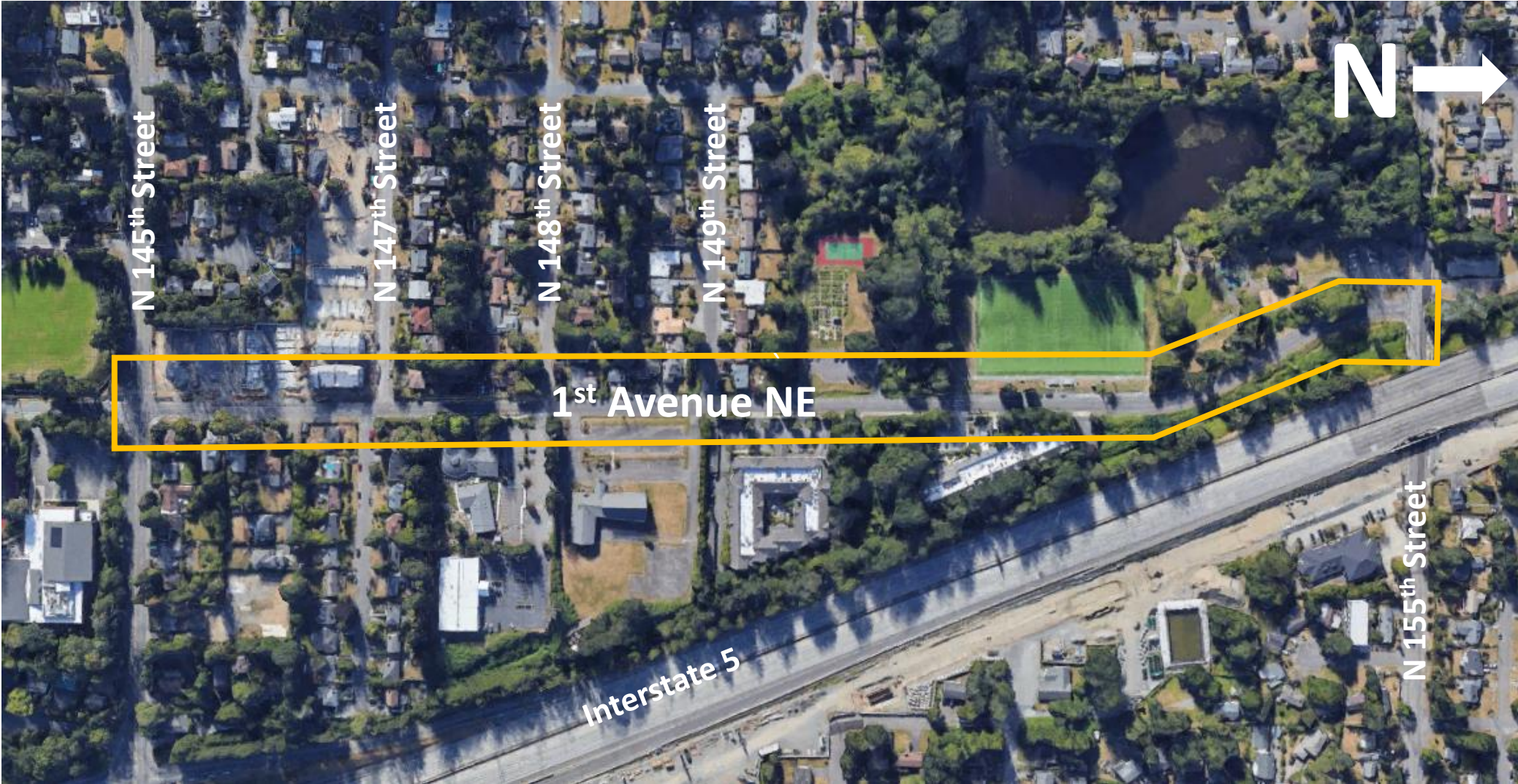
Organizer Introductions

Josh King – City of Shoreline

Darren Murata – Design Consultant (DOWL)



Project Area



Project Description

The Project proposes to provide continuous pedestrian facilities along at least one side of the corridor, improving nonmotorized connectivity along 1st avenue while enhancing accessibility to the future Sound Transit “Shoreline South/148th Station”. Project

Elements to include:

- 1. Construction of curb, gutter, and sidewalk.**
- 2. Construction of ADA curb ramps within project limits.**
- 3. Construction of driveways to tie into existing driveways.**
- 4. New storm drainage system as needed.**



Project Description

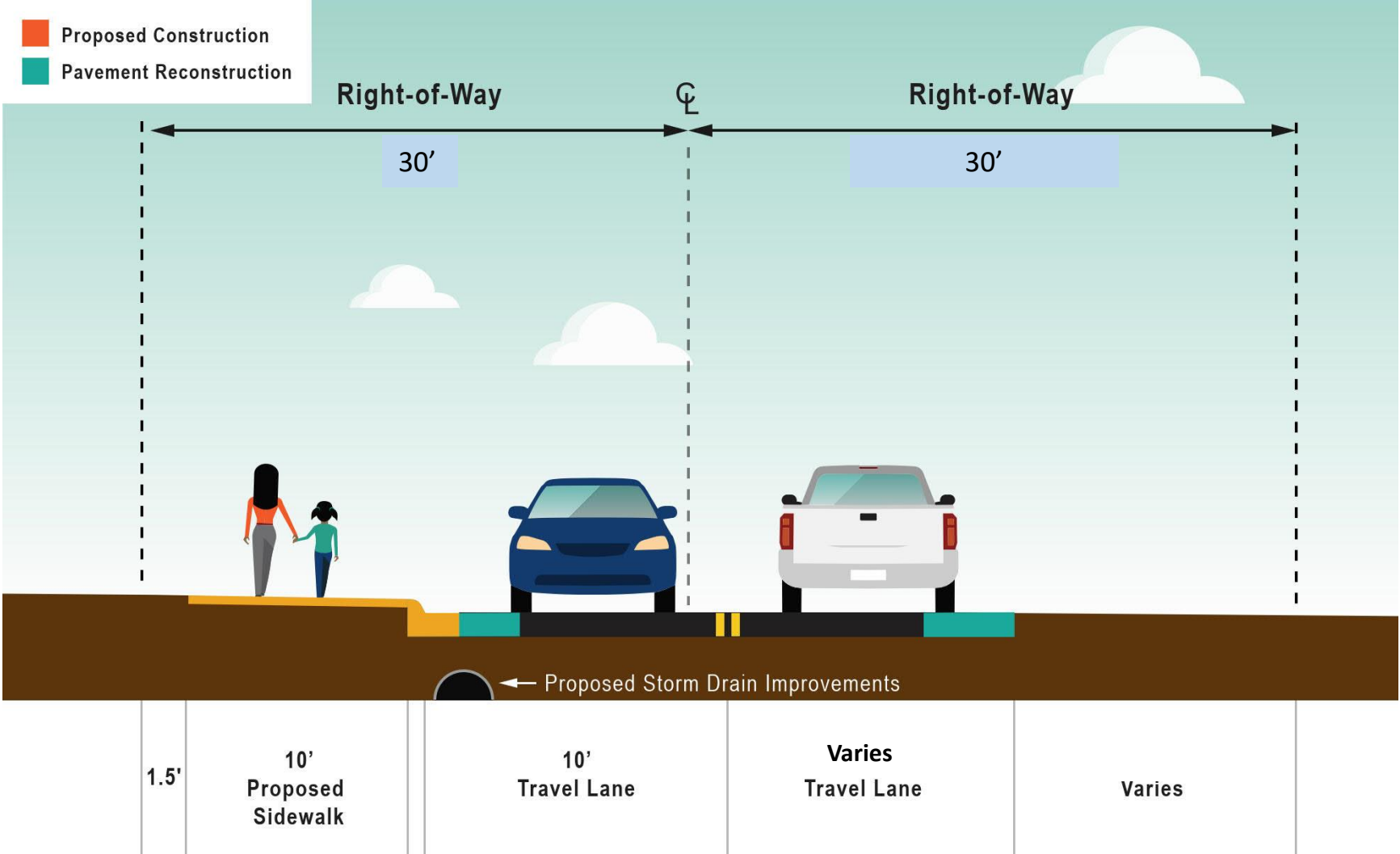
In response to anticipated development within the corridor, addition of a north-bound right turn lane at intersection of 1st Avenue NE and N 155th Street is included with this project.



What we have done to date

- **Completed Review of Existing Conditions.**
- **Developed Conceptual Alternative 1A with 10' Wide Sidewalk on West Side.**
- **Additional Conceptual Alternatives Explored**
 - **Alternative 1B with 5' Wide Sidewalk and 5' Wide Amenity Zone on West Side.**
 - **East Side Alternative with Varying Sidewalk Width and Amenity Zone.**

Design Alternative 1A



Design Alternative 1A



Design Alternative 1A



MATCHLINE STA. 9+50 (SEE PAGE ABOVE)

MATCHLINE STA. 14+50 (SEE NEXT SHEET)

Design Alternative 1A



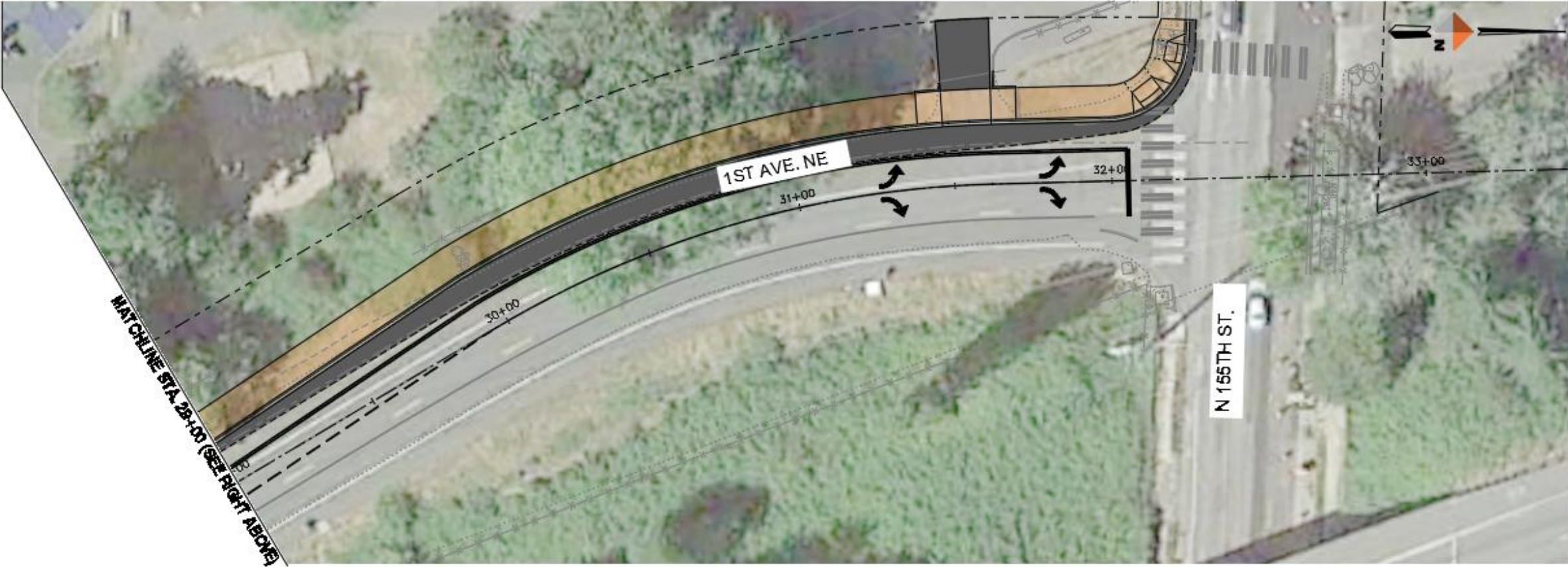
Design Alternative 1A



Design Alternative 1A



Design Alternative 1A



Anticipated Permits

- **State Environmental Policy Act (SEPA) Review**

Additional Permitting Needs to be determined Following the Project's Pre-App meeting and will be discussed during the live online presentation.

Anticipated Permits

SEPA (Washington) State Environmental Policy Act – requires a lead public agency to identify and analyze environmental impacts associated with governmental decisions. A SEPA checklist is a thorough document with format prescribed by the Washington State Department of Ecology.

Natural Environment:

- **Earth**
- **Air**
- **Water**
- **Plants**
- **Animals**

Built Environment:

- **Energy and natural resources**
- **Environmental health**
- **Land and shoreline use**
- **Housing**
- **Aesthetics**
- **Light and glare**
- **Recreation**
- **Historic and culture preservation**
- **Transportation**
- **Public services**
- **Utilities**



Anticipated Permits

SEPA Review Period and How to Comment

Schedule:

- **The Project's SEPA checklist will be issued for public comment by the Department of Planning and Community Development (PCD) closely following this meeting.**
- **A link will be provided on the project web page at the time of posting with additional information regarding how to submit comments.**

What to Expect Next

- **Fall 2022 – Winter 2023: City will coordinate with property owners for Temporary Construction Easements (TCE) on adjacent private property.**
- **Fall 2022 – Winter 2023: Final Design**
- **Summer 2023: Construction**

How Comments are Utilized

Comments provided help the City:

- **Have a better understanding of public interest**
- **Promote equity and inclusion**
- **Improve processes and procedures**

Additional Project Information



Project Website

- Please continue to visit the project website for accurate and up-to-date information. A sign-up sheet will be provided for those that attend the VOH along with an opportunity to respond to the project survey during the comment period.
<https://www.shorelinewa.gov/government/projects-initiatives/1st-avenue-ne-145th-to-155th-streets-light-rail-access-improvements>

Construction Notifications

- “What to Expect” Letter will be mailed approximately 2 – 3 months before construction start date
- Reminder Postcards will be mailed approximately 2 weeks before construction start date



City Contact Information



City of Shoreline

Josh King

jking@shorelinewa.gov

(206) 801-2459

