

Re



King County

Department of
Natural Resources and Parks
Solid Waste Division

Waste
Prevention

Resource
Recovery

Waste
Disposal

King County Solid Waste Division



Mission

Reducing single use

Reusing everything that can be

Recycling what's left

Renewing communities

Rethinking what's possible

Vision

Healthy, safe, and thriving communities
in a waste-free King County



Re+

Re+ is a call to action

Strategic Climate Action Plan

1.3.3 - The Department of Natural Resources and Parks (...) shall achieve at minimum net carbon neutrality on an annual, ongoing basis

5.1.1 - Deliver zero waste of resources plan (ZWORP)

5.1.3 - Zero food waste in landfill in 2030

KC County Code

10.14.020 County goals.

It is King County's goal to achieve zero waste of resources by 2030 through maximum feasible and cost-effective prevention, reuse and reduction of solid wastes going into its landfills and other processing facilities.

KC Equity and Social Justice Strategic Plan

Vision: A King County where all people have equitable opportunities to thrive.

"(O)ur investments (...) should assess and address disproportionate environmental burdens and promote the equitable access to environmental benefits and resulting economic opportunities."

K4C Commitment

Develop a regional strategy through the adopted 2019 Comprehensive Solid Waste Management Plan to reach zero waste of resources by 2030

Comprehensive Solid Waste Management Plan

Several policies and actions in the Comp Plan support Re+ actions



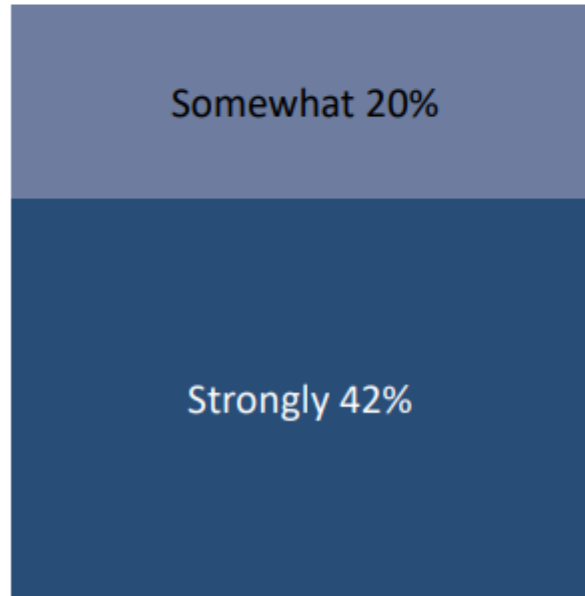
RE+ Program Support

After an introductory statement, residents are widely supportive of the Re+ program.

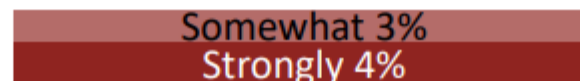
As part of efforts to address climate change, the government of King County has set a goal to cut the amount of recyclable or reusable materials that are being sent to the landfill by 2030 by 70%. To help achieve that goal, the County has developed a waste reduction program known as "RE+," to invest in a variety of programs, technologies, and facilities to achieve this goal.

In general, do you strongly support, somewhat support, somewhat oppose, or strongly oppose the concept of the RE+ program?

Support 63%



Oppose 8%

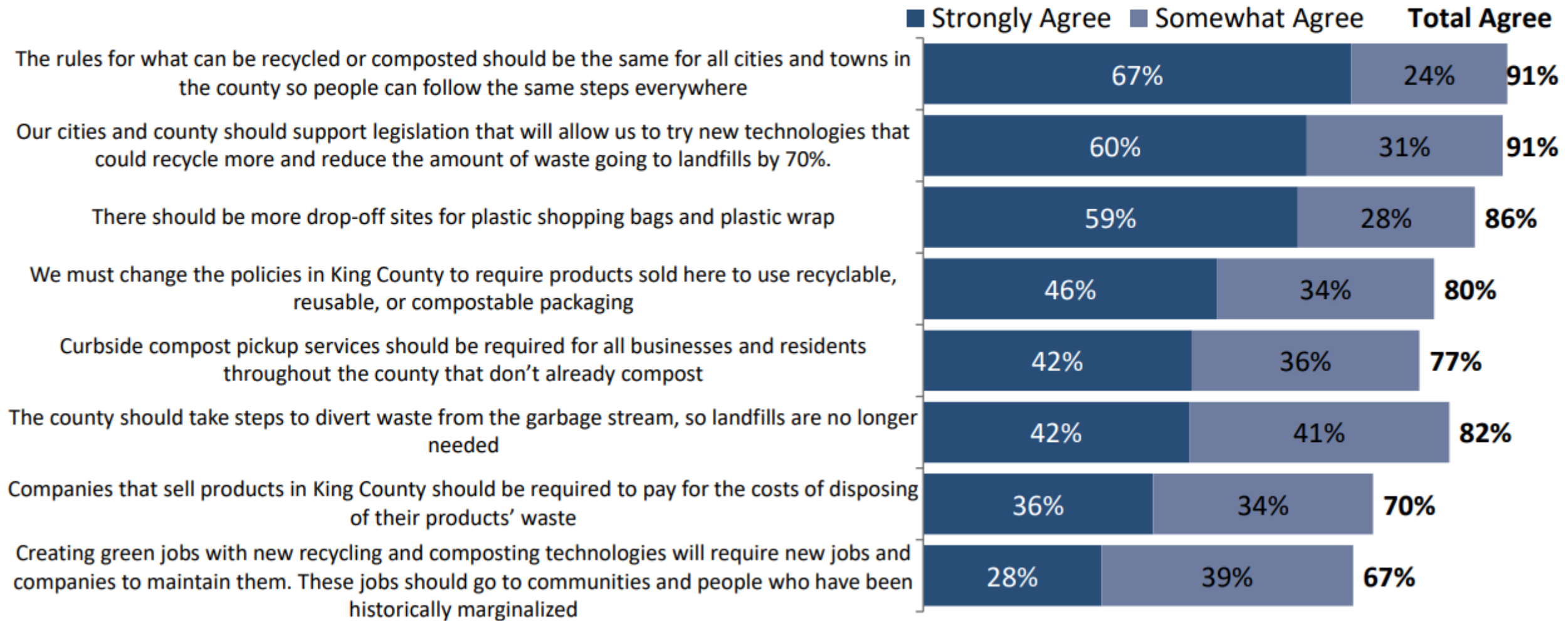


Haven't heard of/ (Don't know) 29%



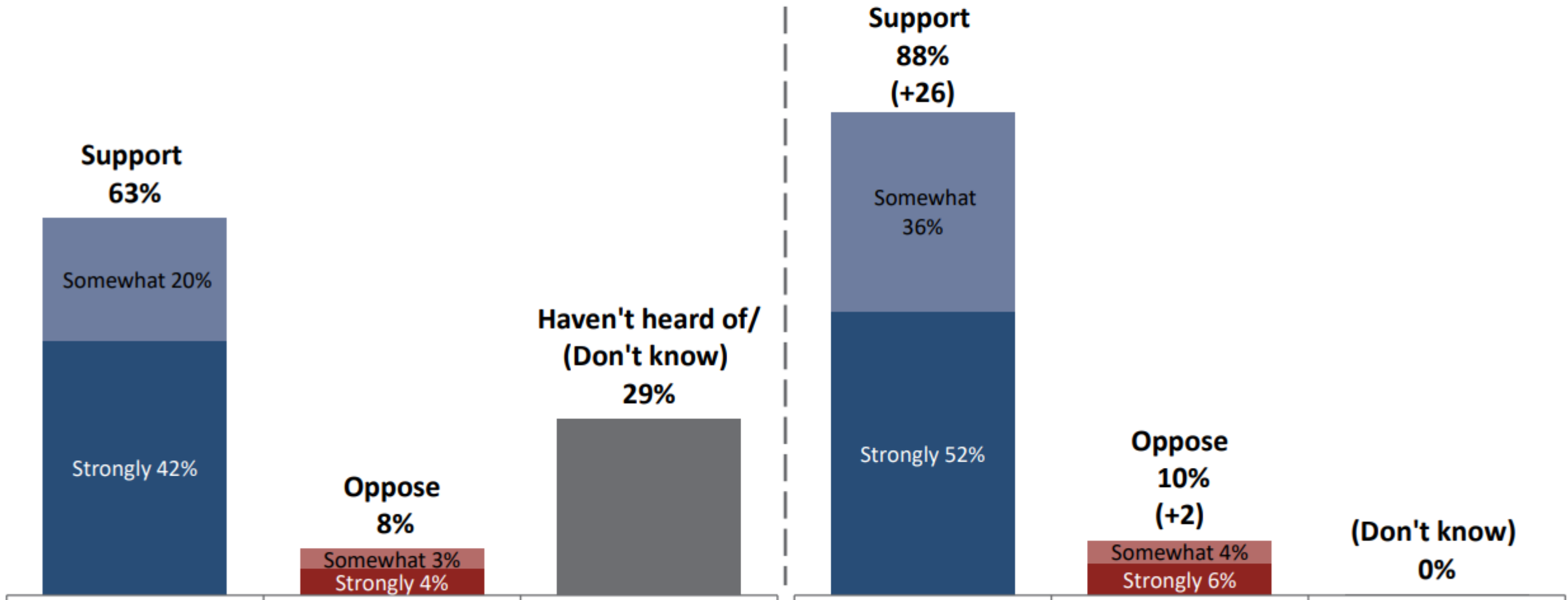
RE+ Program Statements Test

At least two-thirds agree with all of these statements, indicating general support for the Re+ concept on a wide range of potential program elements.



Support After Program Components

After providing additional information about the Re+ program, support for Re+ increases to nearly 90%.



Q33/41. After hearing all of this... Would you say you strongly support, somewhat support, somewhat oppose, or strongly oppose the RE+ program?

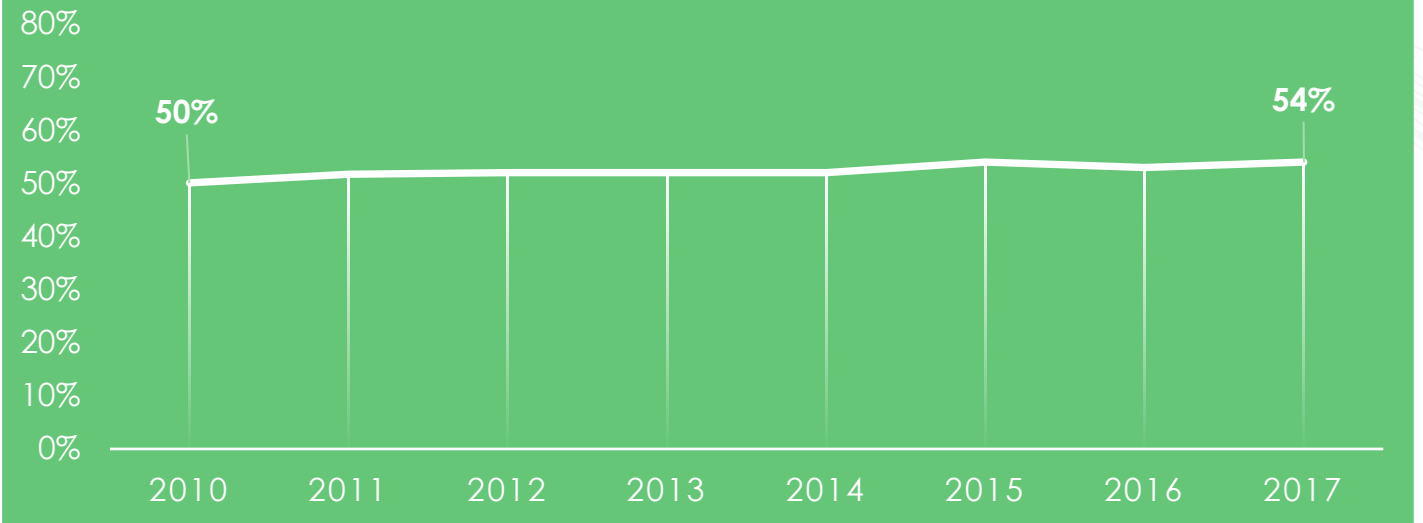
Where is King County leading?

- Curbside collection of non-organic recyclables
- C&D Recycling
- Yard waste collection

Where is King County lagging?

- Weekly organics & recycling collection
- Extended Producer Responsibility
- Banning food waste heading to landfill

RECYCLING RATES HAVE REMAINED RELATIVELY FLAT FOR NEARLY A DECADE



What does ZERO WASTE of RESOURCES look like?

**465,000
TONS**
LESS WASTE

1 MILLION
MORE TREES



RECOVERED FOOD FOR
92,000
PEOPLE



500+
GREEN
JOBS
CREATED



24 MILLION
FUTURE
DISPOSAL
COST
AVOIDANCE



150,000
FEWER
BARRELS OF
OIL BURNED



Organics (28% of landfill)

WA State Organics Legislation

- Diversion potential: 110,000 tons/yr
- GHG reduction: 67,000 MTCO₂e/yr

Single Family Organics Collection

- Diversion potential: 14,000 tons/yr
- GHG reduction: 6,000 MTCO₂e/yr

Non-Residential Food Waste Recycling

- Diversion potential: 50,000 tons/yr
- GHG reduction: 15,000 MTCO₂e/yr

Plastic, Paper, and Other Materials (26% to landfill)

Extended Producer Responsibility (EPR) for Packaging and Paper Products (PPP)

- Diversion potential: 42,000 tons/yr
- GHG reduction: 75,000 MTCO₂e/yr

Mixed Waste Processing

- Diversion potential: 200,000 tons/yr
- GHG reduction: 141,000 MTCO₂e/yr

NextCycle Washington

- Impacts dependent on participants

Re+ Circular Economy Grants

- Impacts dependent on participants



Community

Community Panel

A group of community members that live, work, and volunteer in King County who will help guide SWD in the equitable implementation of Re+

Re+ City Grant Proposal

A competitive grant program for King County cities to access and accelerate regional Re+ transformation

City-County Collaboration

Coordination and collaboration between King County and its cities to maximize zero waste impacts and standardize waste and recycling guidelines



Estimated Impacts from Fast Start Actions

Diversion potential – **300k – 400k** tons per year within King County

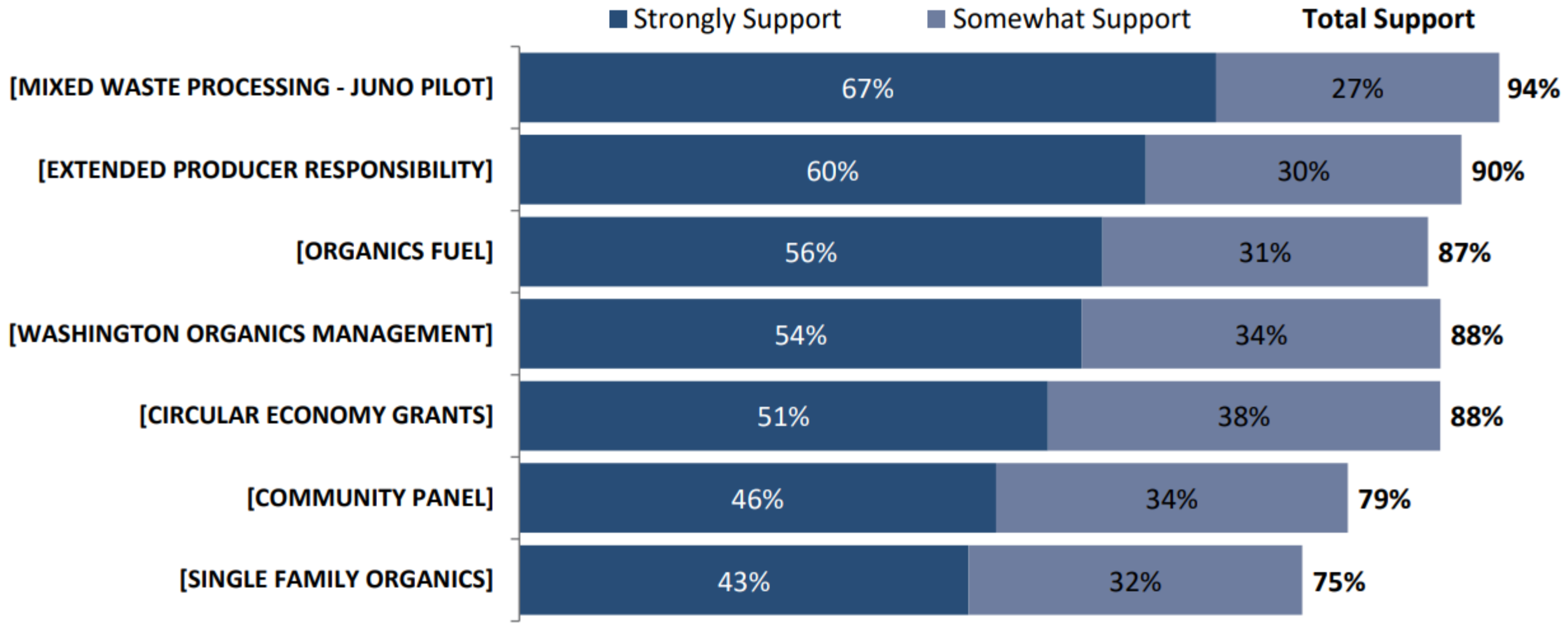
GHG reduction Estimate – **200k – 300k** MTCO₂e annually

Other Considerations

- Increased spending to implement actions will increase rates
- Behavior change
- Increase in “green jobs” to process more recyclables

Program Components

Mixed waste processing and EPR may be the most supported parts of the Re+ program, but all program components resonate strongly and widely with King County residents.



Q34-40. Next, I'd like to tell you about some of the potential components that could be part of the RE+ program. For each, please tell me whether you strongly support, somewhat support, somewhat oppose, or strongly oppose that component of the program.

Thank You!

For additional information please contact:

Patty Liu

King County Solid Waste Division

Re+ Program Manager

pliu@kingcounty.gov



Re

