



Luncheon Concerts in the Park 2019



# CURRENTS

News from the City of Shoreline

Volume 24 No. 6

**July-August 2022**

## Council discusses restoring expiring levy lid lift

**ON JUNE 27**, the City Manager submitted her recommendation to the City Council to restore the 2016 maintenance and operations levy lid lift for public safety and community services. Levy lid lifts enable City property tax revenues to keep pace with inflation allowing the City to continue to provide its base level of services.

Even with a strong financial position and conservative budgeting principles that include healthy reserves, Shoreline, along with other cities across the state, continue to face a structural imbalance when looking at their financial forecasts. The cost of providing basic services continues to grow faster than the revenues that fund those services. The reason for this is primarily due to the state-mandated 1% cap on property tax increases. This 1% cap does not allow property tax revenues to keep pace with inflation. However, with voter approval, cities can address this with "levy lid lifts" that allow them to exceed the 1% limit. Under state law, there is a six-year limit for each levy lid lift, at which time cities need to seek voter approval for another levy lid lift. More than 30% of the City's operating budget revenue comes from property taxes.

Shoreline voters approved levy lid lifts in 2010 and 2016. Passage of those levy lid lifts allowed the City to reset the property tax rate and increase the annual levy by the rate of inflation each year for six years. Doing so allowed City revenues to keep up with inflation. The 2016 levy expires at the end of this year.

### Financial Sustainability Citizen Advisory Committee

Earlier this year, the City Manager engaged a 13-member Financial Sustainability Citizen Advisory Committee (Committee) to review the City's finances and services and provide a recommendation for a potential levy lid lift. The Committee reviewed the City's budget and finances and heard from department directors about services impacted by the levy lid lift.

Property taxes collected by the City go into the City's general fund, which funds most of the day-to-day services provided by the City, such as police and emergency services, which includes neighborhood safety and traffic patrols and the RADAR program; maintenance of parks, trails, playground, and playfields; and community services for seniors, youth, and individuals and families in need.

Continued on page 3



City Manager search begins

Page 2

Photo courtesy Sam Le



Free trees for your property

Page 6



Summer events

Page 7

## CONTACT YOUR Shoreline City Council



**MAYOR**  
**KEITH SCULLY**  
206-801-2202  
kscully@shorelinewa.gov



**DEPUTY MAYOR**  
**BETSY ROBERTSON**  
206-396-5807  
brobertson@shorelinewa.gov



**DORIS FUJIOKA McCONNELL**  
206-801-2204  
dmcconnell@shorelinewa.gov



**LAURA MORK**  
206-801-2207  
lmork@shorelinewa.gov



**EBEN POBEE**  
206-801-2201  
epobee@shorelinewa.gov



**JOHN RAMSDELL**  
206-330-3948  
jramsdell@shorelinewa.gov



**CHRIS ROBERTS**  
206-391-2733  
croberts@shorelinewa.gov

**CONTACT ALL COUNCILMEMBERS:**  
(206) 801-2213  
council@shorelinewa.gov

**CITY COUNCIL MEETINGS:**  
Mondays at 7:00 p.m.  
Virtual meetings via Zoom  
Agendas: shorelinewa.gov/councilmeetings

# Shoreline City Manager Debbie Tarry announces retirement; Council begins process of searching for new city manager

**IN MAY** of this year, Shoreline City Manager Debbie Tarry announced her retirement to the Shoreline City Council. Tarry, who has served as City Manager since 2014, will retire on November 2, 2022. One of the biggest decisions a city council can make is choosing a city manager. Shoreline operates as a code city under the laws of the State of Washington with a council-manager form of government. As the governing body, the seven elected part-time City Councilmembers set policy and appoint a city manager. The city manager implements the council's policies and runs the day-to-day business of the city.

The City Council has hired Raftelis, an executive search firm, to help with the search and hiring of a new city manager. Raftelis has been conducting a nationwide search for potential candidates and we anticipate they will select finalists by August. We expect finalist interviews will take place in Shoreline in September. The City Council expects to hold a reception where community members can talk to the finalists. The City Council will select a new city manager by the end of September. This will allow for a smooth transition.

City Manager Debbie Tarry leaves a long legacy of exceptional leadership after serving the City in various capacities since 2000. The City Council appointed her Shoreline City Manager in January of 2014 after serving as Shoreline's Interim City Manager for the three months prior. Before taking on that position, Tarry was Shoreline's Assistant City Manager from 2011 to 2013, and the City's Finance Director from 2000 to 2011.

Throughout her tenure, Tarry has been intimately involved in most of the critical decisions the City has faced over the past 22 years. From the Aurora Corridor improvements to climate action and sustainability; from light rail station area planning to sidewalks and transportation infrastructure improvements; and from expanding the City's human services efforts to building an anti-racist community, Tarry has always worked to build a better community for all Shoreline residents.

"Debbie leaves a legacy at the City of Shoreline that we can all be proud of," stated Shoreline Mayor Keith Scully. "Under her steady leadership the City has weathered a pandemic and accomplished a great deal, the impacts of which will be felt for decades to come. We have been fortunate to have Debbie with the City for so long. It has been a great pleasure working with her and I congratulate her on her retirement."

*"Over half of my career has been in Shoreline and it has been an honor and a privilege to serve the City for over 22 years, the last nine as City Manager. I would like to thank this and past City Councils for entrusting me with the opportunity and the obligation of helping to lead this wonderful City. I would also like to express my appreciation to the residents of Shoreline for their participation and support in so many City endeavors and projects. Finally, I would like to thank all the employees of the City. One of the true joys of serving the City of Shoreline has been working with such a great staff."*

- City Manager Debbie Tarry

# Council discusses restoring expiring levy lid lift

Continued from page 1

The Committee reached consensus on the following recommendations to the City Manager:

- **The City Council should place a measure on the November 2022 ballot restoring the levy lid lift.** All committee members agreed that a levy lid lift ballot measure should be placed on the November 2022 general election ballot to restore the current six-year levy lid lift, which is set to expire at the end of this year.
- **The levy lid lift should seek to maintain the current baseline level of city services.** Over the past six-years, demand for basic city services and the cost of providing those services have increased, causing service levels to decrease. The Committee agreed that the levy rate should be sufficient to restore a baseline level of service that Shoreline residents have come to expect.
- **Committee members had differences of opinion on if the levy lid lift should expand services to address emerging issues.** Emerging issues presented and discussed by the Committee included expanding services related to human services, the mobile crisis response team (the current RADAR program), urban forestry, and recreation. Generally, the Committee agreed that the services may be needed and/or desired by residents. However, they encouraged the City Council to consider the cost of services and the impact to the levy rate.
- **The Committee did not come to an agreement on a recommended first year levy lid lift rate.** While Committee members agreed that the service areas proposed for expansion reflected community priorities, there was concern that adding these services would result in a levy reset rate that is much higher than the current rate, which might be difficult to pass considering current economic conditions and concern about those on fixed incomes having difficulty paying. As a result, Committee members were unable to decide on a specific recommended levy rate.

Council was set to make a final decision on whether to place a levy lid lift on the November ballot at their July 18 meeting.

## MORE INFORMATION

[shorelinewa.gov/fscac](http://shorelinewa.gov/fscac)

CMO Management Analyst Christina Arcidy  
[carcidy@shorelinewa.gov](mailto:carcidy@shorelinewa.gov), 206-801-2216

# City budgeting and tax relief

**UNDER** Washington state law, Cities are required to pass balanced budgets. When a budget gap is projected, the City must find a way to increase revenues, cut costs, or do some of both. When a surplus is projected, City policy states that the City's first priority is to ensure there are adequate reserves. If reserves are below policy levels then surpluses should be used to restore reserves to mandated levels. If reserves meet or exceed policy requirements, surpluses should be used to fund economic development investment in Shoreline, fund infrastructure improvements, fund other high priority one-time needs, or be held to fund future deficits if they are forecast in the Financial Sustainability Model. If it appears that surpluses are sustainable on a recurring basis, the City Council will review and consider funding for new on-going operational needs. These conservative budgeting policies have allowed the City to continue to provide services to the community on a consistent basis in both good and bad economic times.

## Property tax relief

You may qualify for property tax exemptions and deferrals. If you are a senior citizen, disabled, or a homeowner with limited income and your primary residence is in Washington State, there are several programs that may help you pay your property taxes and/or special assessments. Your household income and your age or disability determine your eligibility for these programs.

## MORE INFORMATION

[kingcounty.gov/depts/assessor/taxrelief](http://kingcounty.gov/depts/assessor/taxrelief)  
[kingcounty.gov/depts/assessor/forms](http://kingcounty.gov/depts/assessor/forms)



# Report issues with SeeClickFix

Report non-emergency issues on your phone or computer!

- Potholes
- Traffic signs
- Vandalism
- Parks & Trails Maintenance
- Sidewalks
- Illegal cutting of City trees

SeeClickFix is available as a free app or on the City's website at:  
[shorelinewa.gov/onlineservicerequest](http://shorelinewa.gov/onlineservicerequest)



# N 155<sup>th</sup> Street Pavement Preservation

**BEGINNING** in July and extending through October, we will be repairing and applying an asphalt overlay to sections of N 155<sup>th</sup> Street between Aurora Avenue N and 15<sup>th</sup> Avenue NE. The asphalt paving on this stretch of road has deteriorated significantly over the past three years and needs to be repaired and a new overlay of asphalt needs to be applied in sections before this coming winter.

We will repair and apply a full asphalt overlay to 155<sup>th</sup> between Aurora and 1<sup>st</sup> Avenue NE. In coordination with Sound Transit, there will be an additional section of asphalt overlay

beginning at 1<sup>st</sup> Avenue and continuing approximately 200 feet eastward, underneath the I-5 overpass, to a point east of the Shoreline Fire District Station. Sound Transit will pay all costs of the additional overlay area as mitigation for pavement deterioration caused by Sound Transit's construction operations. The stretch of 155<sup>th</sup> from the Sound Transit project site to 15<sup>th</sup> Avenue NE will undergo spot repairs.

Beginning in the second quarter of 2023, we will make repairs to sidewalks and reconstruct curb ramps along 155<sup>th</sup>. We anticipate completing this work by the end of September 2023.

These projects are funded through Shoreline's vehicle license fees paid by Shoreline residents for both pavement maintenance and sidewalk repair.

## MORE INFORMATION

[shorelinewa.gov/projects](https://shorelinewa.gov/projects)  
Project Manager Kristen Terpstra  
[kterpstra@shorelinewa.gov](mailto:kterpstra@shorelinewa.gov)  
206-391-3364

## NORTH CITY NEIGHBORHOOD ASSOCIATION BANNER PROJECT

**IN 2006**, the North City Improvement Project brought 15<sup>th</sup> Avenue NE to life. The change was significant, with wider permanent sidewalks, underground utilities, and decorative street lighting. With its new look, the North City Business District welcomed new businesses. It continues to provide space for ongoing community events such as Jazz Walk and the holiday tree lighting festival.

The North City Neighborhood Association (NCNA) has long supported its business district. In 2021, neighborhood leaders recognized an opportunity. Existing banner supports on light poles had long been empty. NCNA wanted to make sure people traveling on 15<sup>th</sup> Avenue NE knew they were in North City.

One surefire way was to create new banners with a simple design to complement existing features throughout the business district. This project took shape with input from businesses and the generous donation of graphic design skills from NCNA Co-Chair Mark Notermann. NCNA obtained a Neighborhoods Mini-Grant from the City for their banner project last year. Once installed, the banners immediately enhanced the visual appeal of North City Business District.



## Shoreline Police Chief search

**WITH THE** permanent appointment of former Shoreline Police Chief Shawn Ledford to the King County Sheriff's Office (KCSO) Command Staff, the City will be starting the process of selecting a new Police Chief.

As a contract city with KCSO, candidates for the Shoreline Police Chief position will be selected from within KCSO. The process will include an opportunity for community members to meet the finalists and ask questions.

The City Manager expects to make a final decision on the new Police Chief by the end of August.

Rather than administering its own police force, the City contracts with KCSO for police services. Officers work for King County but are dedicated to Shoreline so they get to know the community. The police chief reports to the King County Sheriff and the Shoreline City Manager.



## Shoreline Walks needs Walk Leaders

**Want to help keep our community moving?** We are looking for more volunteers to lead free community walks. Shoreline Walks is a free, volunteer led community program that helps adults stay active, meet new people (or connect with old friends), and feel safer and more confident exploring our city by foot. Walks explore trails, neighborhoods, parks, and streets and often incorporate interesting conversational topics such as art, history, and nature.

The Shoreline Walks program started in 2013. During the last couple years it has exploded in popularity due to everyone's need to get outdoors for safer recreation and social experiences. The City is looking for walk leaders willing to lead additional walks to meet the growing demand of this great program.

Being a walk leader is a simple and rewarding way to give back to your community. Recreation staff will provide training and help you organize your first walk, which generally ranges from two to three miles in length and can be any level of difficulty. Walks take place all over Shoreline and are advertised on the website [shorelinewa.gov/shorelinewalks](http://shorelinewa.gov/shorelinewalks).

If you know of great walking routes around our city and would like to lead a group walk, then be a Walk Leader!

### MORE INFORMATION

[shorelinewa.gov/shorelinewalks](http://shorelinewa.gov/shorelinewalks)

Recreation Specialist Marianne Johnson

[mjohnson@shorelinewa.gov](mailto:mjohnson@shorelinewa.gov), 206-801-2638



## SUMMER MEALS FOR KIDS

**FREE FOOD** for kids and teens under 18! No registration or application is required.

Meals must be eaten on site.

Kids do not need to be enrolled in the Shoreline School District to receive meals.

### Meal Locations

#### Meridian Park Elementary School

17077 Meridian Avenue N  
Tues, Weds, Thurs, 7/5-7/28  
11:20 a.m. - 11:35 a.m.

#### Shoreline Library

345 NE 175<sup>th</sup> Street  
Monday - Friday, 6/21 - 8/26 +  
1:00 p.m. - 2:00 p.m.  
+ Weekend food bags on Fridays

#### Shorewood High School

17300 Fremont Avenue N  
Tues, Weds, Thurs, 7/5-7/28  
11:00 a.m. - 11:15 a.m.

### Meals Providers

Shoreline School District  
Hunger Intervention Program

### Information

Shoreline summer meals:  
[shorelinewa.gov/summerfood](http://shorelinewa.gov/summerfood)

Other summer meal sites:  
[fns.usda.gov/summerfoodrocks](http://fns.usda.gov/summerfoodrocks)  
1 (866) 348-6479 (English)  
1 (877) 842-6273 (Español)



# WANT A FREE TREE(S) FOR YOUR YARD?

## Two programs are available for Shoreline residents

**WE ARE** fortunate to have two opportunities for you to get a free tree(s) for your yard. The first program, called Trees for Rail, is in partnership with Sound Transit and King County Conservation District. This program is open to qualifying residents in the Echo Lake, Ballinger, Meridian Park, North City, Parkwood, and Ridgecrest neighborhoods. The second program, Trees for Shoreline, is open to all Shoreline residents. See below for more information.

### Trees for Rail Expands in Second Year

Trees for Rail is a collaboration between the City, Sound Transit, and King Conservation District. Launched in 2021, its purpose is to re-green the Lynnwood Link light rail corridor with native trees and shrubs as it passes through the city. The program offers free native trees and plants to qualifying Shoreline residents. In its first year, the program reached out to 274 qualifying households in the Ballinger, North City, and Ridgecrest neighborhoods, and successfully planted at 30 homes.

In 2022, the Trees for Rails project area is expanding to include more than 2,400 homes along both sides of I-5 in Shoreline. If you live in the Echo Lake, Ballinger, Meridian Park, North City, Parkwood, or Ridgecrest neighborhoods, you may qualify for a free consultation and installation of up to two trees, four shrubs, and eight groundcovers in your yard.

Residents who sign up for the program will receive a Trees for Rail consultation with King Conservation District staff in preparation for the upcoming fall and winter planting season. To see if your property qualifies, visit [kingcd.org/treesforrail](http://kingcd.org/treesforrail) and use the map tool to see eligible properties.

### MORE INFORMATION

[kingcd.org/treesforrail](http://kingcd.org/treesforrail)

### Trees for Shoreline: Get a Free Tree for Your Property!

This fall, eligible Shoreline residents can apply to receive free trees through Trees for Shoreline, a pilot program aimed at growing and maintaining a healthy urban forest. Trees are important for a healthy Shoreline. They provide a wide range of benefits to our environment and to our homes and properties!

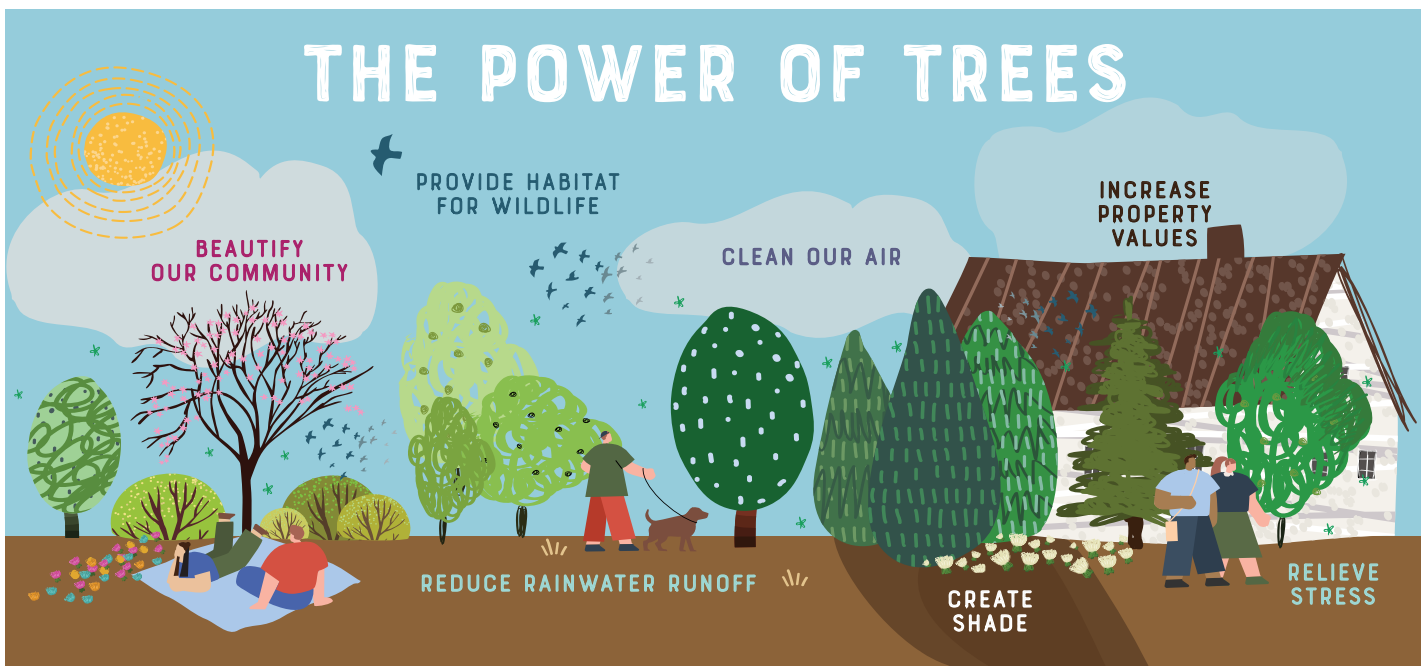
When you participate in Trees for Shoreline, you receive:

- Help selecting the right tree and planting location
- 1 free tree per household
- A watering bag and mulch for your tree
- Training on proper planting and care
- Ongoing care reminders
- Planting assistance (on a limited basis due to volunteer availability)

The application for Trees for Shoreline is open July 15 through August 15. Depending on tree availability and program interest, it is possible that not everyone who applies will receive a tree.

### MORE INFORMATION

Visit [shorelinewa.gov/treesforshoreline](http://shorelinewa.gov/treesforshoreline)



# SUMMER EVENTS

## LOW-TIDE BEACH WALKS

Richmond Beach Saltwater Park, 2021 NW 190<sup>th</sup> Street

Through August 13, beach naturalists offer fun, free & informative beach walks.

Dates & times: [shorelinewa.gov/lowtide](http://shorelinewa.gov/lowtide).

## SHORELINE FARMERS MARKET

Saturdays through October 1, 10:00 a.m. - 2:00 p.m.  
Shoreline Park & Ride  
N 192<sup>nd</sup> Street & Aurora Avenue N

Shop the market and support our local economy, farmers and vendors. More info: [shorelinefarmersmarket.org](http://shorelinefarmersmarket.org).

## LUNCHTIME MUSIC SERIES

Mikey Mike the Rad Scientist - Science & Nature  
Tuesday, Aug. 2, 12:00 p.m.  
Spartan Recreation Center Field, 202 NE 185th Street  
Free concert for all ages! Bring the whole family!

## KARAOKE IN THE PARK

Tuesdays through Aug. 2, 5:30 - 8:00 p.m.  
Cromwell Park, 18030 Meridian Avenue N  
Sing your heart out with family and friends! Karaoke is free and open to everyone.

## NATIONAL NIGHT OUT FOR COMMUNITY

Tuesday, August 2, Multiple locations  
After the last two summers of isolation, this is a great opportunity for neighbors to get together again! Neighborhoods across the city celebrate their neighborhoods by meeting neighbors, learning about crime prevention, and making our community a safer place for all. Learn more at [shorelinewa.gov/nno](http://shorelinewa.gov/nno).

## EVENING CONCERTS *in the* PARK

Northwest Blend - Hawaiian music  
Wednesday, Aug. 17, 6:30 p.m.  
Kruckeberg Botanic Garden, 20312 15<sup>th</sup> Avenue NW  
Join ShoreLake Arts' for a free concert in the park!  
Visit [shorelakearts.org](http://shorelakearts.org) for more information.

# CELEBRATE SHORELINE

SATURDAY, AUG. 20  
CROMWELL PARK, 18030 MERIDIAN AVENUE N

## FESTIVAL

Noon - 9:00 p.m.

### FAMILY AREA

12:00 - 6:00 p.m.

### BEER GARDEN

1:00 p.m. - 9:00 p.m.

Come celebrate the City of Shoreline's birthday! The festival has two stages with live music and shows, beer garden, pony rides, children's theater, food, toy workshop, hands on activities and more!

This is a free family friendly festival. There is a cost for food, beverages and some activities.

## FAMILY STAGE PERFORMERS

12:30 - 5:00 p.m. in the Family Area

EMCEE: Chris Rossiter

12:30 - 1:15 pm: Ella Bella Bee

1:45 - 2:30 pm: Eric Ode

3:00 - 3:45 pm: Reptile Man

4:15 - 5:00 pm: Eric Haines

## MAIN STAGE MUSIC

1:00 - 9:00 p.m. at the Cromwell Park amphitheater  
EMCEE: Stitch Mitchell

1:00 - 2:30 pm: Butoh - Japanese Dance Theatre

2:45 - 3:45 pm: JHP Cultural & Diversity Legacy

4:00 - 5:00 pm: Tillers Folly - Celtic folk/rock

5:30 - 7:00 pm: High Tide - Beach Boys Tribute Band

7:30 - 9:00 pm: Paperback Writer - Beatles Experience

[SHORELINewa.GOV/CELEBRATESHORELINE](http://SHORELINewa.GOV/CELEBRATESHORELINE)



July-August 2022 Vol. 24 No. 6  
**CITY OF SHORELINE**  
**CURRENTS**

Currents is produced by the  
Shoreline City Manager's Office  
Contact the City:  
(206) 801-2700

**Alternate formats  
available upon request**



Currents is printed on  
post-consumer recycled  
paper with soy-based ink.



Web: [shorelinewa.gov](http://shorelinewa.gov)

 [facebook.com/shorelinewa](https://facebook.com/shorelinewa)

 [twitter.com/shorelinewagov](https://twitter.com/shorelinewagov)

 [youtube.com/cityofshoreline](https://youtube.com/cityofshoreline)



17500 Midvale Avenue N  
Shoreline, WA 98133-4905

PRSR STD  
US Postage  
PAID  
Seattle, WA  
Permit No. 248

ECRWSS  
POSTAL CUSTOMER

# Shoreline Farmers Market

**Saturdays through October 1  
10:00 a.m. to 2:00 p.m.**

**Shoreline Park & Ride, N 192<sup>nd</sup> Street & Aurora Avenue N**



Vegetables, berries, meat, eggs, cheese,  
flowers, honey, bread, sweets, pasta,  
prepared foods & much more!

The market accepts EBT, WIC, Senior  
FMNP + double all SNAP transactions.

[shorelinefarmersmarket.org](http://shorelinefarmersmarket.org)