

Please Respect the Following Rules:

- DO keep your dog under voice control
- DO remain with and watch your dog(s)
- DO respect other park users - Stop bothersome behavior immediately
- DO use the plastic bags to clean up after your dog
- DO keep all food out of the Off Leash Area (OLA)
- DO carry leash & collar with proper license and ID tags for all dog(s)
- DO remove pinch, spike and choke collars
- DO keep your dog on leash unless in the designated OLA
- DO accompany all children under 14 years of age
- DO keep puppies under 4 months out of OLA

Volunteer



For Information regarding volunteer opportunities with ShoreDog contact info@shoredog.org

Licensing & Enforcement

A King County Pet License is required by Shoreline residents prior to entry into Shoreline's Off Leash Areas. To learn how to receive a King County Pet License go to: www.kingcounty.gov/safety/animalservices/licensing Call (206) 296-7387 for more information

The City of Shoreline has contracted the services of a King County Animal Control Officer and will continue to enforce leash laws at all areas outside the designated off leash areas.

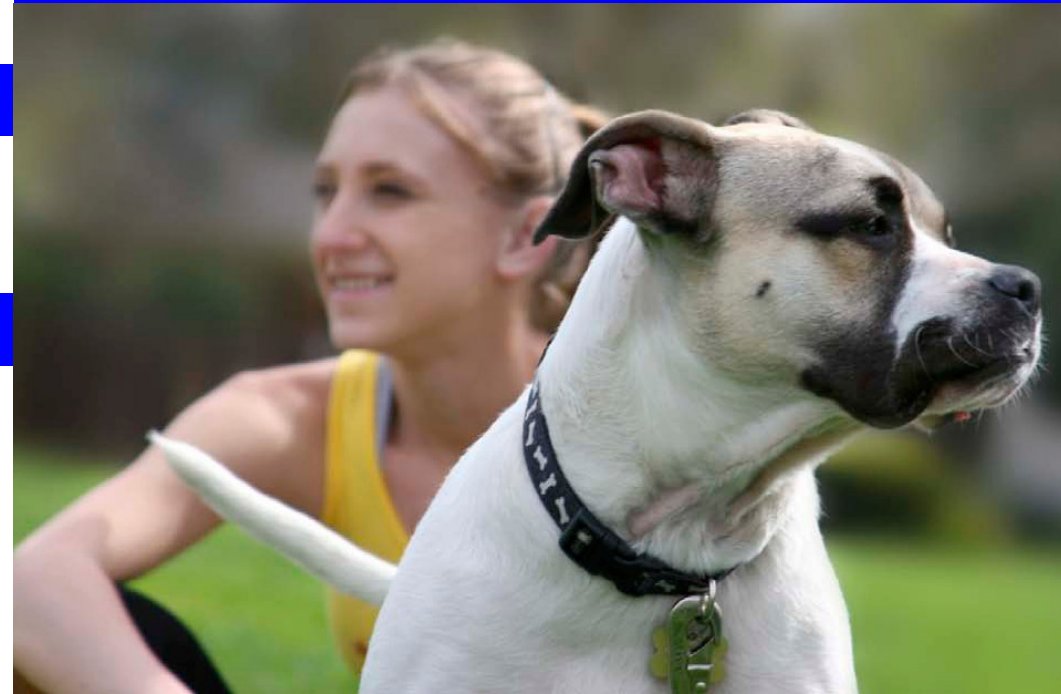
To report a possible enforcement violation, please contact Kirk Peterson, Park Maintenance Superintendent at kpeterso@shorelinewa.gov or call (206) 801-2611



For more information please call (206) 801-2600 or visit www.shorelinewa.gov/parks



Off Leash Dog Areas in Shoreline



Come enjoy a safe place to play with
your dog leash free!

