

WARNING: The content of this email could not be validated and may not match the person in the "To" field.
CAUTION: This email originated from outside of the City of Shoreline. Do not click links or open attachments unless you recognize the sender and know the content is safe.

Dear Mayor Sealy,

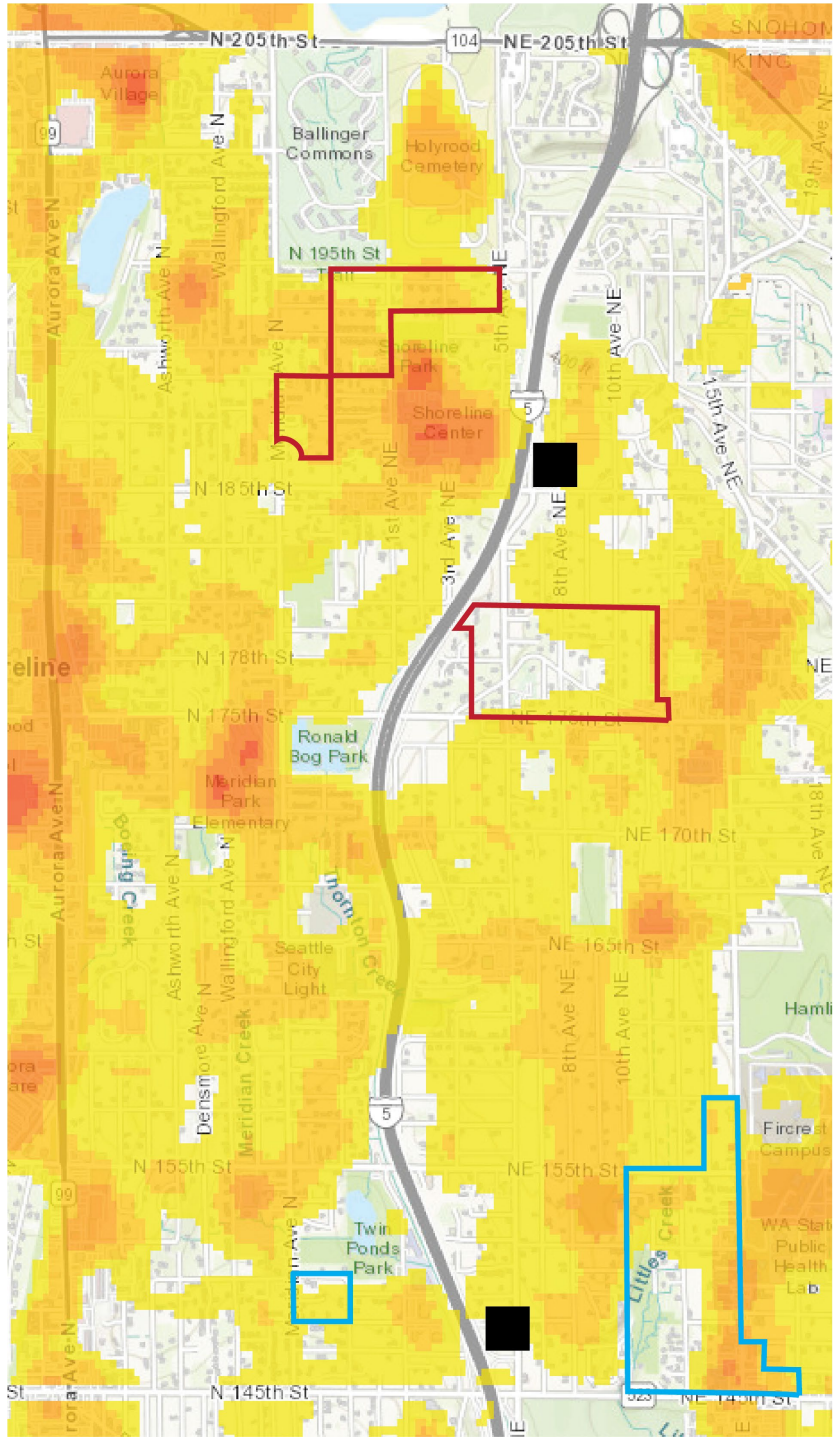
I am sending this map ahead of my comment tonight for your reference.

This map is a combination of the Urban Heat Areas map on the Climate Change and City of Shoreline site and the City of Shoreline Zoning Map.

I will be advocating for MEU-70 areas to retain 10% of the trees because:

- Current heat areas will already be worse by the time the noted areas unlock for development
- These areas will be developed to replace trees with hard, flat surfaces that make urban heat worse
- A few trees saved are better than none to help combat the heat that affects residents and the surrounding areas.

Thank you
Reference lines



- Phase 3-Unlock 2033
- Phase 2-Unlock 2033
- Light Rail Station

Referenes:
2021 City of Shoreline Zoning Map

Climate Change and the City of Shoreline: Urban Heat/ Extreme Heat Map