



2022 State of the City

Thursday, June 9, 2022

Building Connections

COVID-19 Pandemic

City's response

COVID in Shoreline

- COVID cases 10,718
- Hospitalizations 316
- Deaths 137

As of June 6, 2022

CARES Act and ARPA Funds

- \$2 million in CARES Act and ARPA funding for rental assistance, grocery vouchers, mental health support, and PPE for community partners
- \$775,000 in grants to Shoreline small businesses



COVID

- **2020-2021 school year – 84 students participated in Remote Learning Camps**
- **2021-2022 school year – teen and tween programs reopened, helping kids reconnect**



COVID

- City facilities closed to public March 2020 – July 2021

CLOSED

In order to help slow the spread of COVID-19, City Hall is closed to the public until further notice.

We are happy to help you by phone, email, or online.

FOR MORE INFORMATION:
206-801-2700
[shorelinewa.gov/covid](https://www.shorelinewa.gov/covid)



COVID

- **94% of people 12 and up in Shoreline's 3 zip codes at least one does of vaccine**



Housing

Housing

- **Over 33% of Shoreline households cost burdened**
- **Shoreline renters – 43% cost burdened, with 22% extremely cost burdened**
- **Shoreline homeowners – 29% cost burdened, with 10% extremely cost burdened**



2022 Property Tax Exemption Program Report

Units	Project	Affordable
16	3108 Apartments	4
81	Arabella II	17
164	Geo Apartments	34
80	Interurban Lofts	16
129	Malmö	26
5	North City Development	1
221	Paceline	44
165	Polaris	165
60	Sunrise Eleven	12
72	The 205 Apartments	14
124	Trad Apartments	25
330	The Current	66
243	The Postmark	49
1,690		473

Housing Action Plan

Housing Strategies

- **Less reliance on cars**
- **Racially inclusive communities**
- **Diversity of housing types**
- **ID existing affordable housing and preserve**
- **Leverage publicly owned land**

Addressing Homelessness



The Oaks Enhanced Shelter



**198th Permanent
Supportive Housing Project**

Leo Flor

**Director of the King County Department of
Community and Human Services**

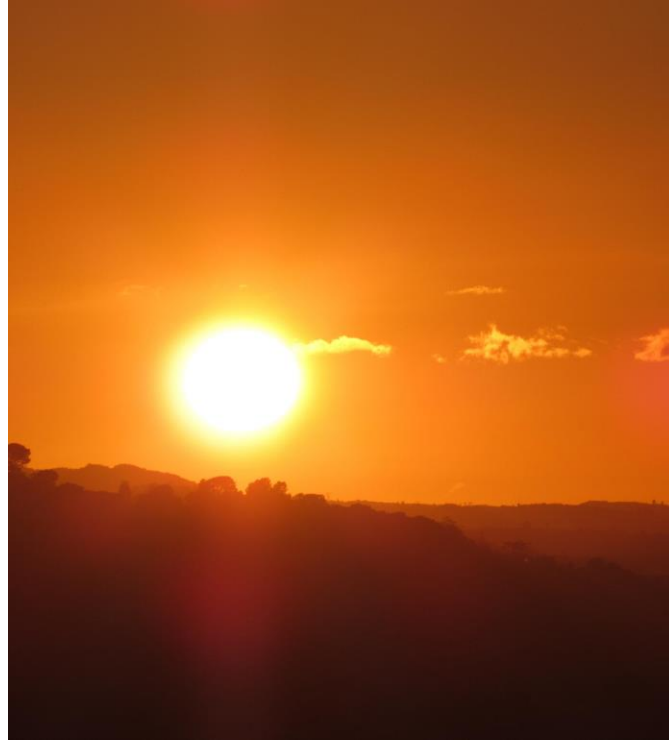


**The Oaks
Enhanced Shelter**



198th Permanent Supportive Housing

Climate Action Plan and Sustainability



Impacts from Climate Change

Updated Climate Action Plan

- **Reduce emissions**
- **Improve equity**
- **Increase community resilience**
- **Protect ecosystems**

Building an Anti-Racist Community

Shoreline becoming increasingly diverse

- 40% of Shoreline residents are people of color**
- One in five Shoreline residents is foreign born**
- One in four speaks a language other than English in the home**
- And 49% of Shoreline School District students are youth of color**

Areas of focus

- **Increase the capacity of City staff to promote service equity and inclusion**
- **Increase access to City information and services by diverse communities**
- **Increase community-based support for diverse communities**

Destination 2024

148th Street Non-Motorized Bridge





145th Corridor and I-5 Interchange

145th Corridor



Economic Development

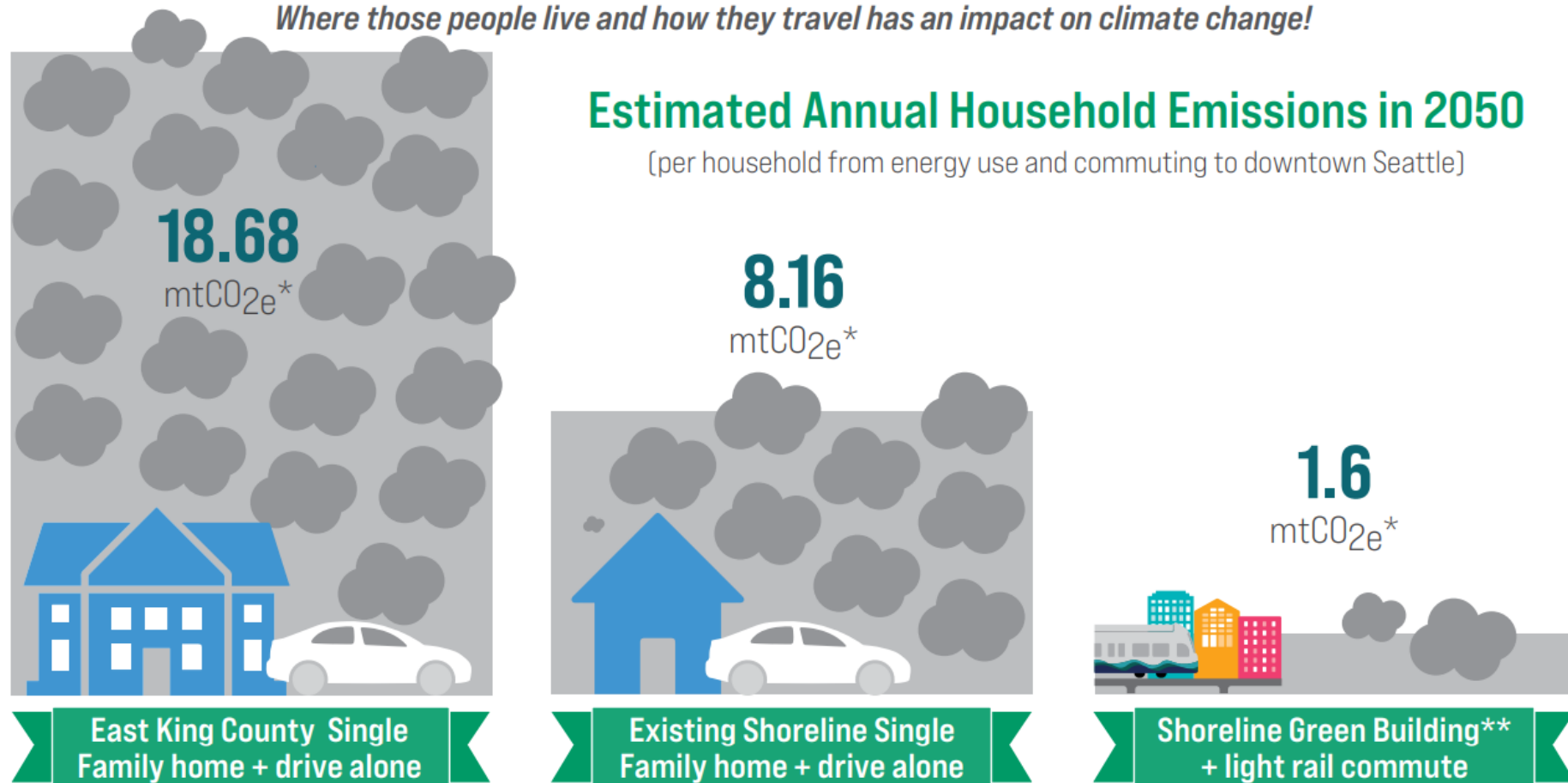


Housing Choice and Affordability

Housing and Transportation Choices have big climate impacts

By 2050...the Puget Sound region's population is expected to reach 5.8 million people.

Where those people live and how they travel has an impact on climate change!



*mtCO₂e=metric tons of carbon dioxide equivalent ** new development in the station areas must meet green building standards

Nathan Daum

Economic Development Manager

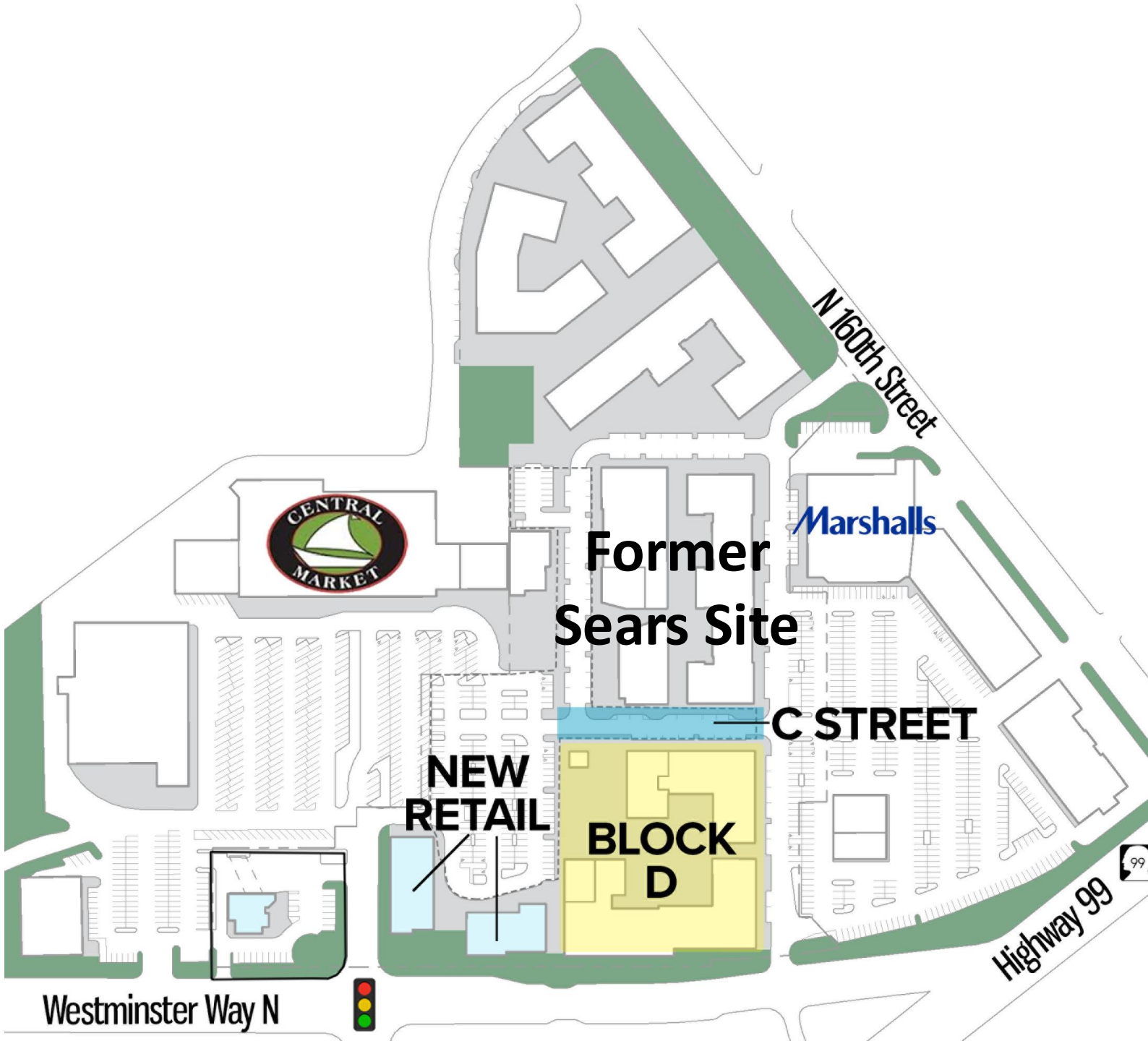


Shoreline Place



The Current

Shoreline Place





Phase 1 (Merlone Geier)



WSDOT and Department of Ecology



Aurora Corridor

192 Shoreline

- 7-stories, 250 units
- All units permanently affordable to 50% AMI
- 55 units reserved for people with disabilities



Light Rail Station Areas

AAA
252 UNITS
(2024)

HAMILTON
URBAN PARTNERS

148th St Non-Motorized
Bridge (2024)

INTRACORP
Zinnia Apartments
299 Units

300-400
UNITS
EVERGREEN
POINT GROUP

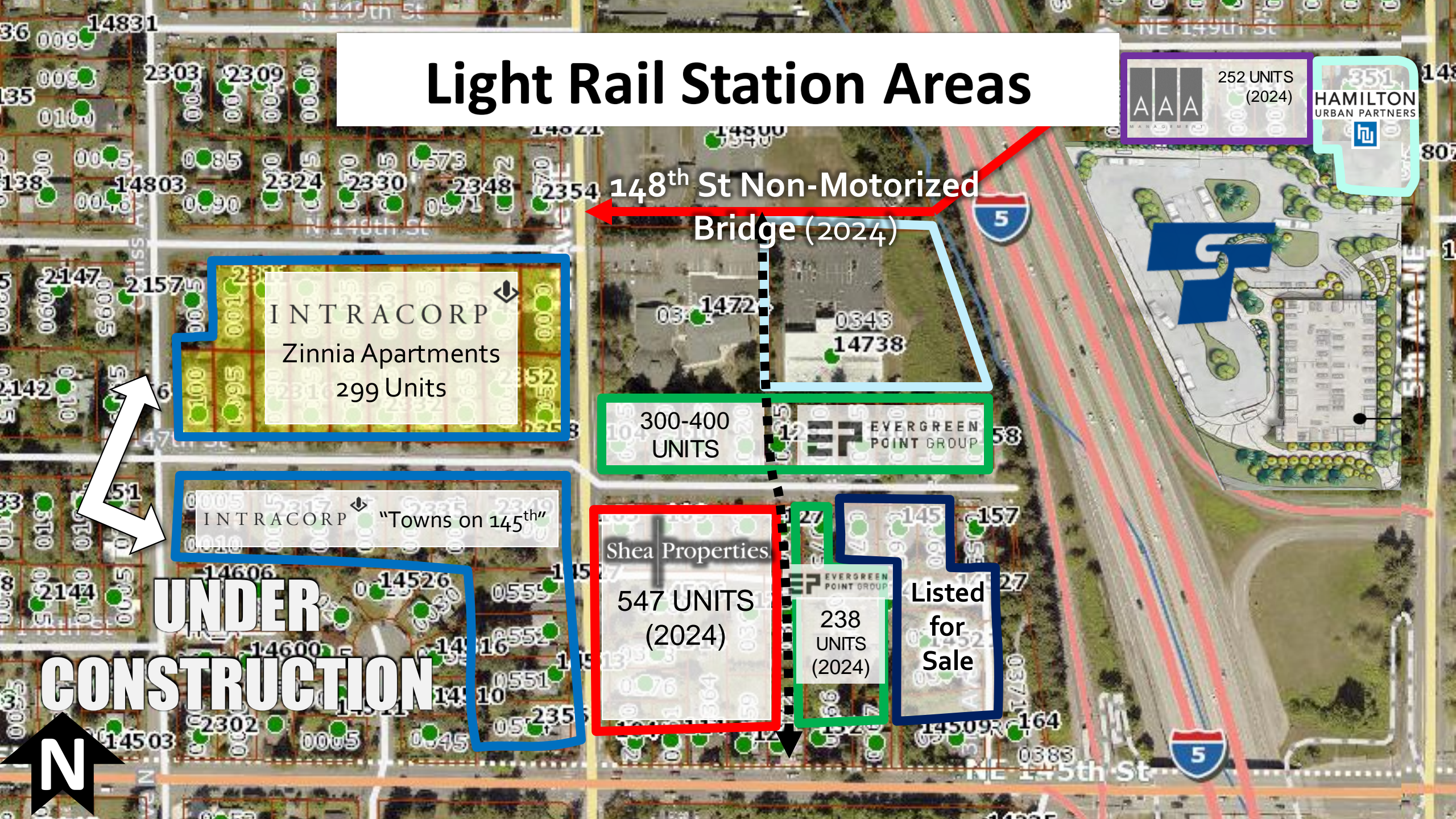
INTRACORP
"Towns on 145th"

Shea Properties
547 UNITS
(2024)

EVERGREEN
POINT GROUP
238
UNITS
(2024)

Listed
for
Sale

**UNDER
CONSTRUCTION**





Shoreline South/148th Station Area

Ion Apartments – 252 Units, Ground Floor Commercial, Station Frontage



Planned Development

Debbie Tarry

City Manager

Organizational Change

- **Since January 2020**
 - **83 employees in new positions**
 - **58 are new hires**
- **Becoming a younger, more diverse**
- **Almost half are millennials**
- **40% hybrid remote/in-person**



**Interim Shoreline Police Chief
Ryan Abbott**

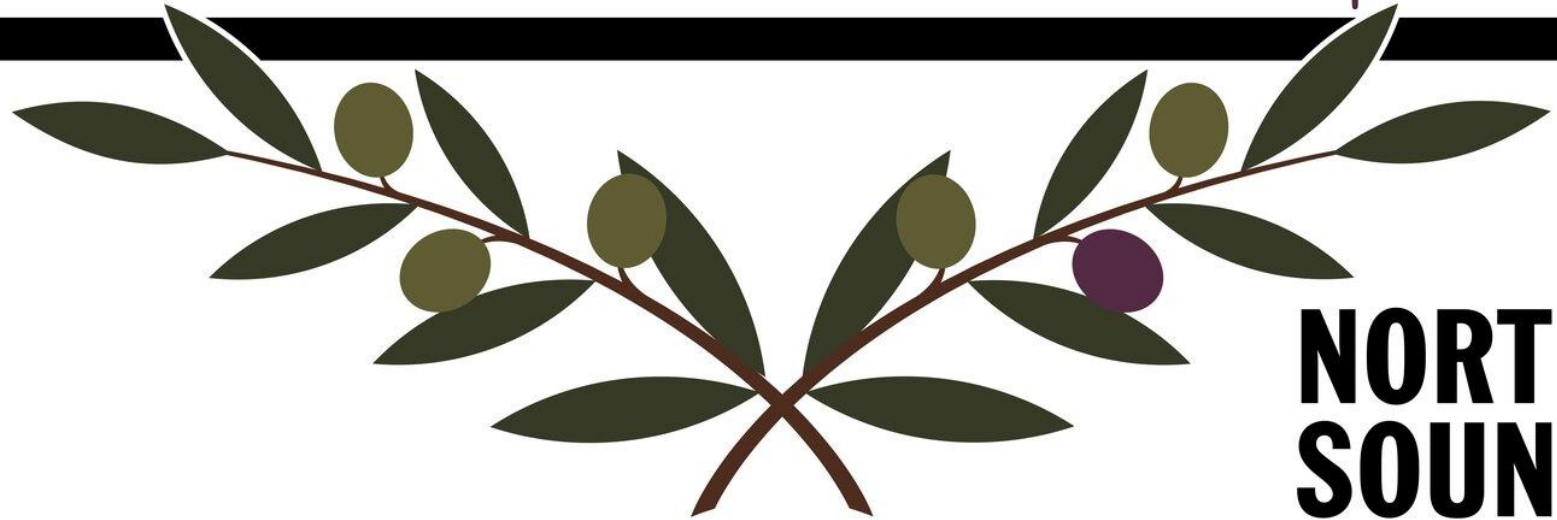
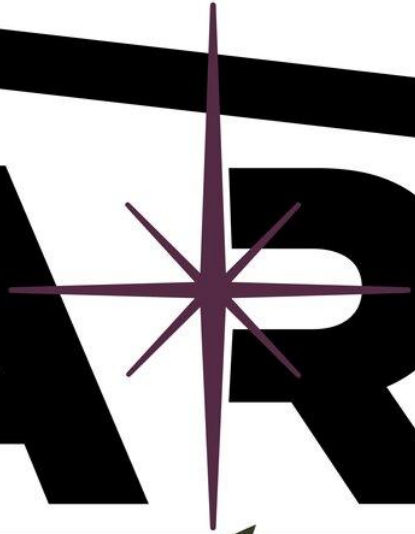


**KCSO Chief of
Patrol Operations
Shawn Ledford**

Shoreline Police



RADAR



**NORTH
SOUND**

Brook Buettner

North Sound RADAR Project Manager

Park Bond Projects



Significant Improvements

- Briarcrest Community Park (shown)
- Brugger's Bog Park
- Hillwood Park
- James Keough Park
- Richmond Highlands Park

Other Park Amenities

- Kruckeberg Botanic Garden (shown)
- Ridgecrest Park
- Shoreview Park



Property Acquisitions for Parks

- **Expand park land**
 - **Paramount Open Space**
 - **Brugger's Bog Park**
 - **Rotary Park**
- **Add'l acquisitions in light rail station areas and other parts of city**
- **New Parks**
 - **Westminster Park**
 - **Edwin Pratt Memorial Park**

Sidewalks



Sidewalk Rehabilitation Projects

- 15th Avenue NE from NE 155th to NE 175th Streets
- 5th Avenue NE from NE 165th to NE 175th Streets



2018 Voter Approved Sidewalks

Map Key:



Estimated Year of Sidewalk Construction

Sidewalk Project Location

2022
20th Avenue NW
(NW 190th - NW 195th St)

2026

8th Avenue NW
(N side of Sunset Park -
Richmond Beach Rd NW)

2025

Dayton Avenue N
(N 178th St - N Richmond
Beach Rd NW)

2025

Linden Avenue N
(N 175th - N 185th St)

2026

2021
1st Ave NE
(NE 193rd - NE 195th St)

2024

2024

Ballinger Way NE
(19th Ave NE - 25th Ave NE)

2021

N 185th St

N 185th St

2022
5th Avenue NE
(NE 175th St. - NE 182nd Ct)

N 175th St

2027

Dayton Avenue N
(N 155th - N 160th St)

2023

Westminster Way N
(N 145th - N 153rd St)

2028

15th Avenue NE
(NE 150th - NE 160th St)

City of
SHORELINE



99

99

NW Richmond Beach Rd

8TH Ave NW

Fremont Ave N

Meridian Avenue N
(N 194th - N 205th St)

19th Avenue NE
(NE 196th - NE 205th St)

2024

2024

2021

1st Ave NE
(NE 193rd - NE 195th St)

2026

2025

2025

2022

5th Avenue NE
(NE 175th St. - NE 182nd Ct)

N 175th St

2027

Dayton Avenue N
(N 155th - N 160th St)

2023

Westminster Way N
(N 145th - N 153rd St)

2028

15th Avenue NE
(NE 150th - NE 160th St)

City Finances

Financial Health

- **AA+ Bond rating**
- **Standard & Poor's highest assessment for fiscal management**
- **Clean audits**
- **Healthy reserves**

Levy Lid Lift

- **Structural imbalance – 1% cap doesn't keep up with inflation**
- **Levy lid lifts in 2010 and 2016**

Summer Events



Lunchtime Concerts

Tuesdays at noon

Karaoke in the Park

Tuesdays, 5:30 to 8:00 p.m.
Cromwell Park





Shoreline Walks

A different walk each Saturday



Low-Tide Beach Walks

Richmond Beach Saltwater Park, [Check the calendar](#)

Celebrate Shoreline!

Saturday, August 20, Cromwell
Park



Thank you!