

Community Climate Conversation

A Vision for Transformation — Updating Shoreline's
Climate Action Plan

Opening Remarks



Deputy Mayor Keith Scully

Project Team

City of Shoreline



Cameron Reed
Environmental Program Specialist

Cascadia Consulting Group



Gretchen Muller
*Consultant
Team Lead*



Angela
Pietschmann
Technical Lead



Julie Stein
*Graphic Design
Lead*



Hailey Weinberg



Alicia Fennell

Workshop Overview

Workshop Purpose

- Gain **familiarity** with the Shoreline CAP
- Gain **insights** into Shorelines' **progress to date**
- Gather input on **community priorities** for how to achieve City climate goals
- Learn **what's next** and how you can **stay involved**

Workshop Agenda

- Welcome and Introductions
- Shoreline Climate Action Plan
- Setting a Shared Vision and Understanding Priorities
 - Zoom Poll
 - Small Group Breakout
- Wrap Up and Adjourn

Tech Support



Brent Edgar - IT support

- Contact him if you have **any issues** with **Zoom**



Call: (206) 390-8378



Email: brent@cascadiaconsulting.com

Icebreaker



Please rename yourself with your first name and your neighborhood

To change your name:

- Click on 'Participants' → Hover over your name → Click 'More' then 'rename'



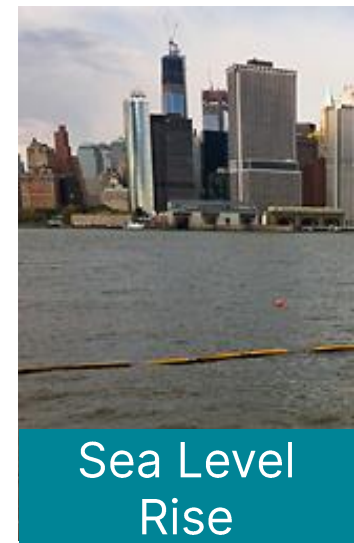
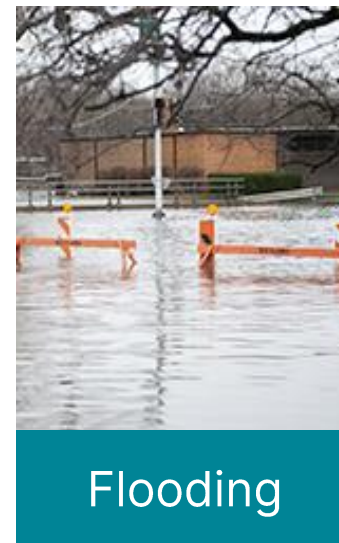
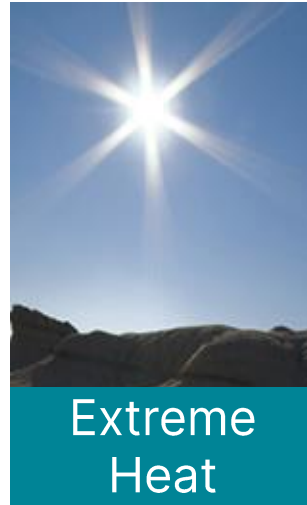
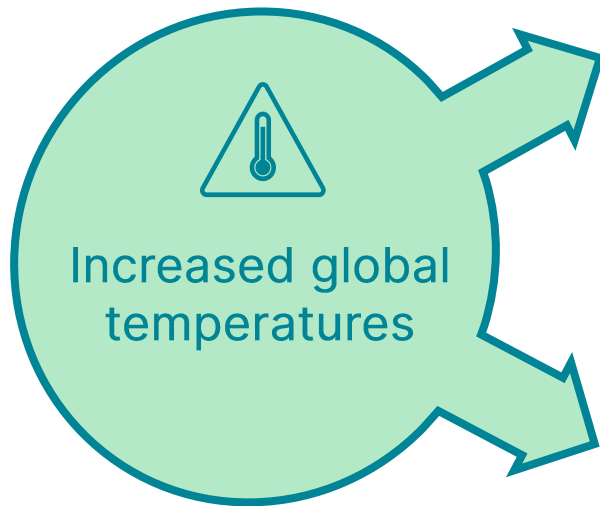
In the Zoom chat, please answer:

In 2050, I want Shoreline to look like.....

Shoreline Climate Action Plan (CAP)

What it is and what this means for Shoreline

Local Climate Risks/Impacts



What Will the CAP Include?

Actions to reduce greenhouse gases to prevent climate change



Mitigation



Sequestration

Actions to increase the amount of carbon captured by trees and natural systems

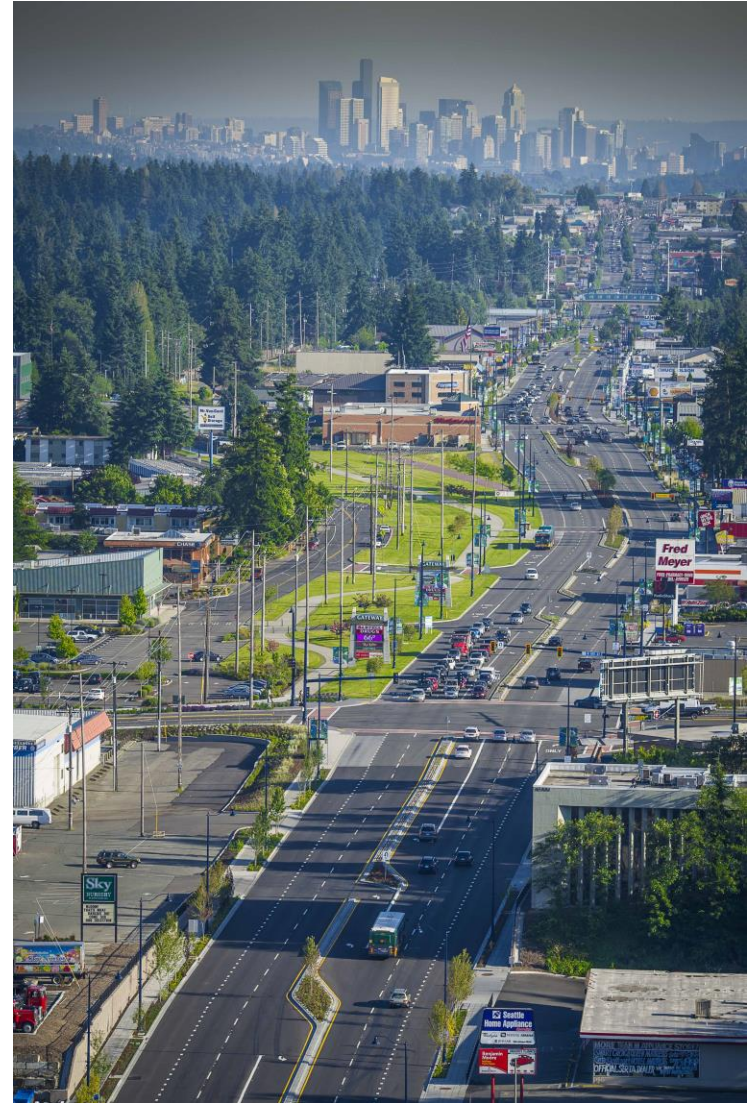


Adaptation/
Resilience

Actions to prepare the community for the impacts of climate change, especially the most vulnerable

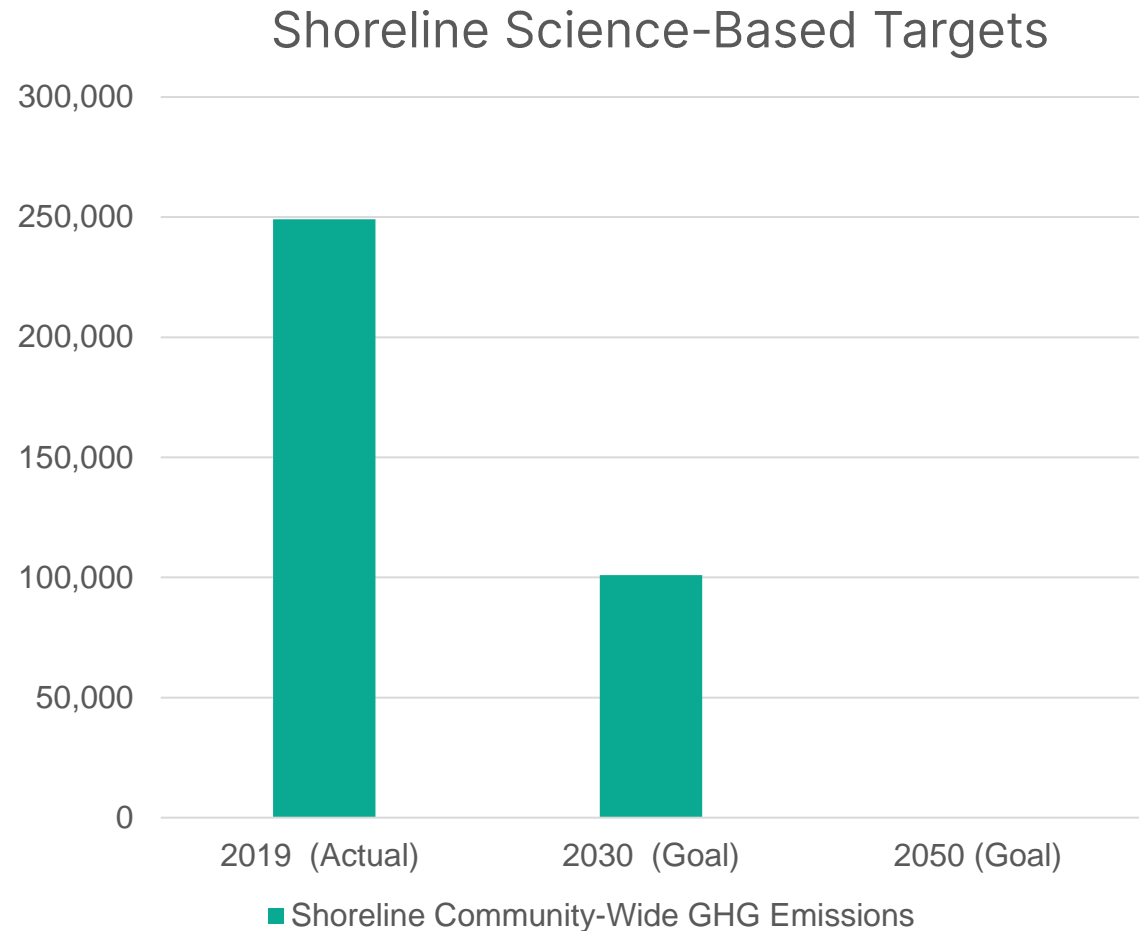
The Climate Action Plan Will...

- Identify **Key City Actions** to:
 1. Reduce emissions
 2. Protect from impacts
 3. Capture more carbon
- Address **Equity**
- Focus on Next **9-10** Years
- Provide Roadmap to **2050**



Where do we Need to Go?

- Shoreline joined “Race to Zero”
- Net-Zero no later than 2050
- ~60% GHG Reduction by 2030 interim target



Zoom Poll

How important is it to you that the City of Shoreline take action on climate change?

- Not important
- Not very important
- Slightly important
- Quite important
- Very important

Progress to date

Where we are now

Shoreline Leadership and Action

- 2009 - Baseline Inventory
- 2013 - First Climate Action Plan
- 2015 - Carbon Wedge Analysis
- 2016 - Updated Inventory
- 2020 - Climate Impacts Study
- 2021 Updated GHG Inventory



- Transit Oriented Development
- Green Building
- Sidewalk Network
- Urban Forestry
- Recycling and Composting

Community action and Support

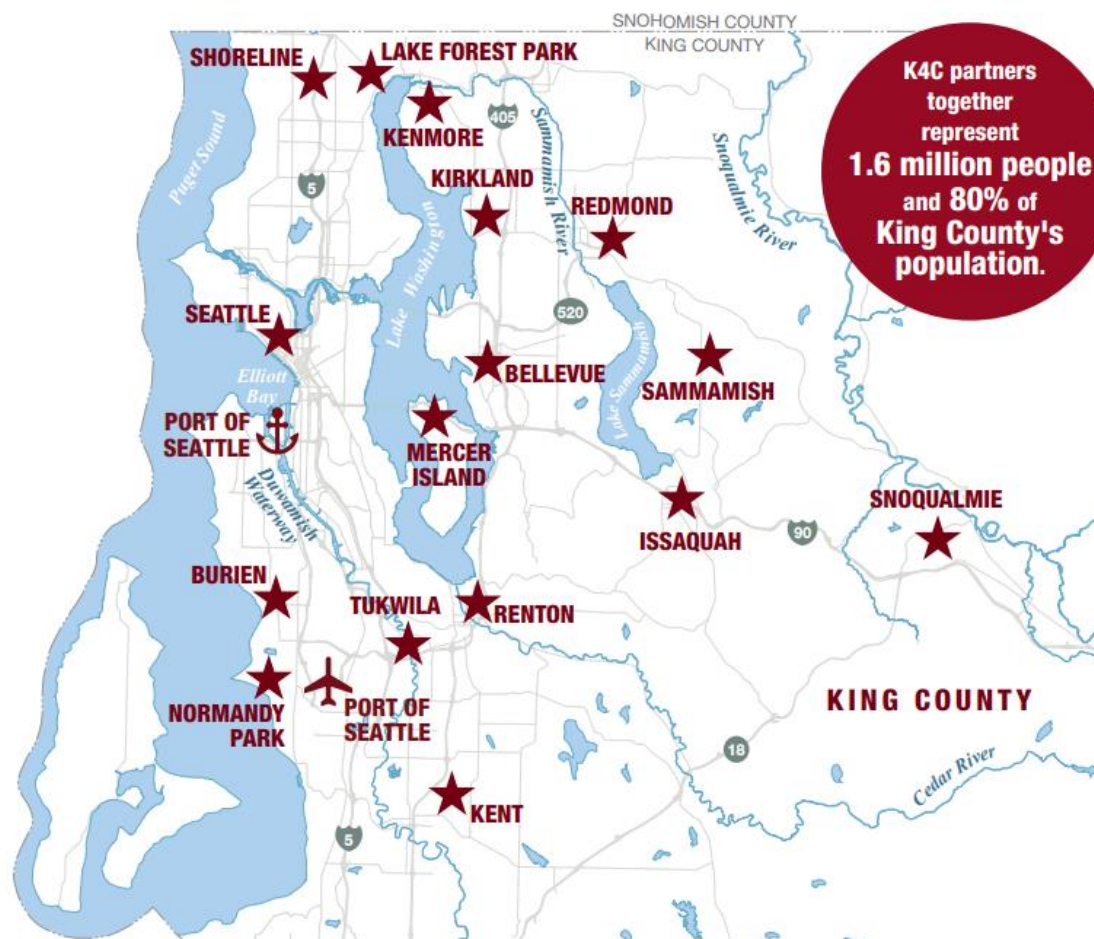


Regional Collaboration



King County - Cities
CLIMATE COLLABORATION

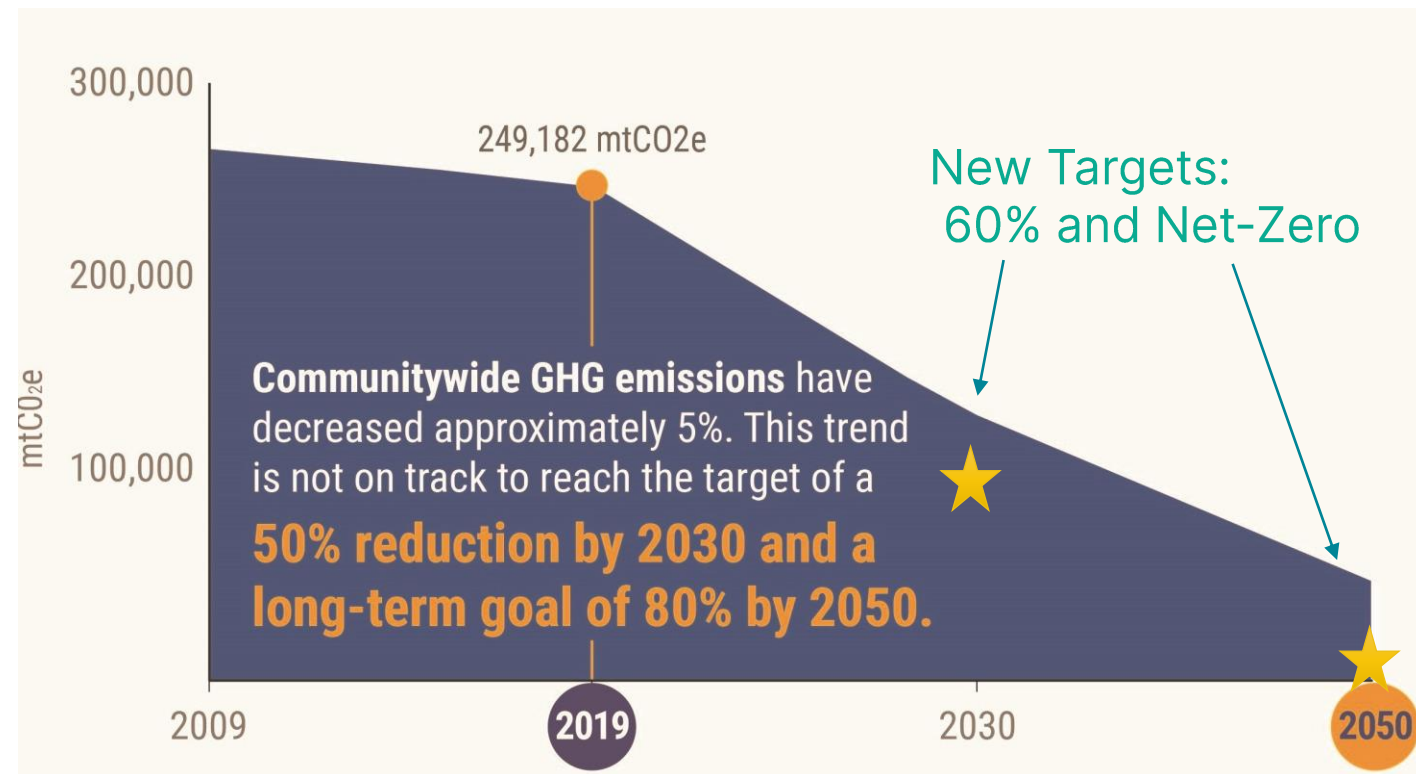
- Collective influence
- Regional scope
- Leverage resources
- Joint Commitments



2009-2019 Emissions

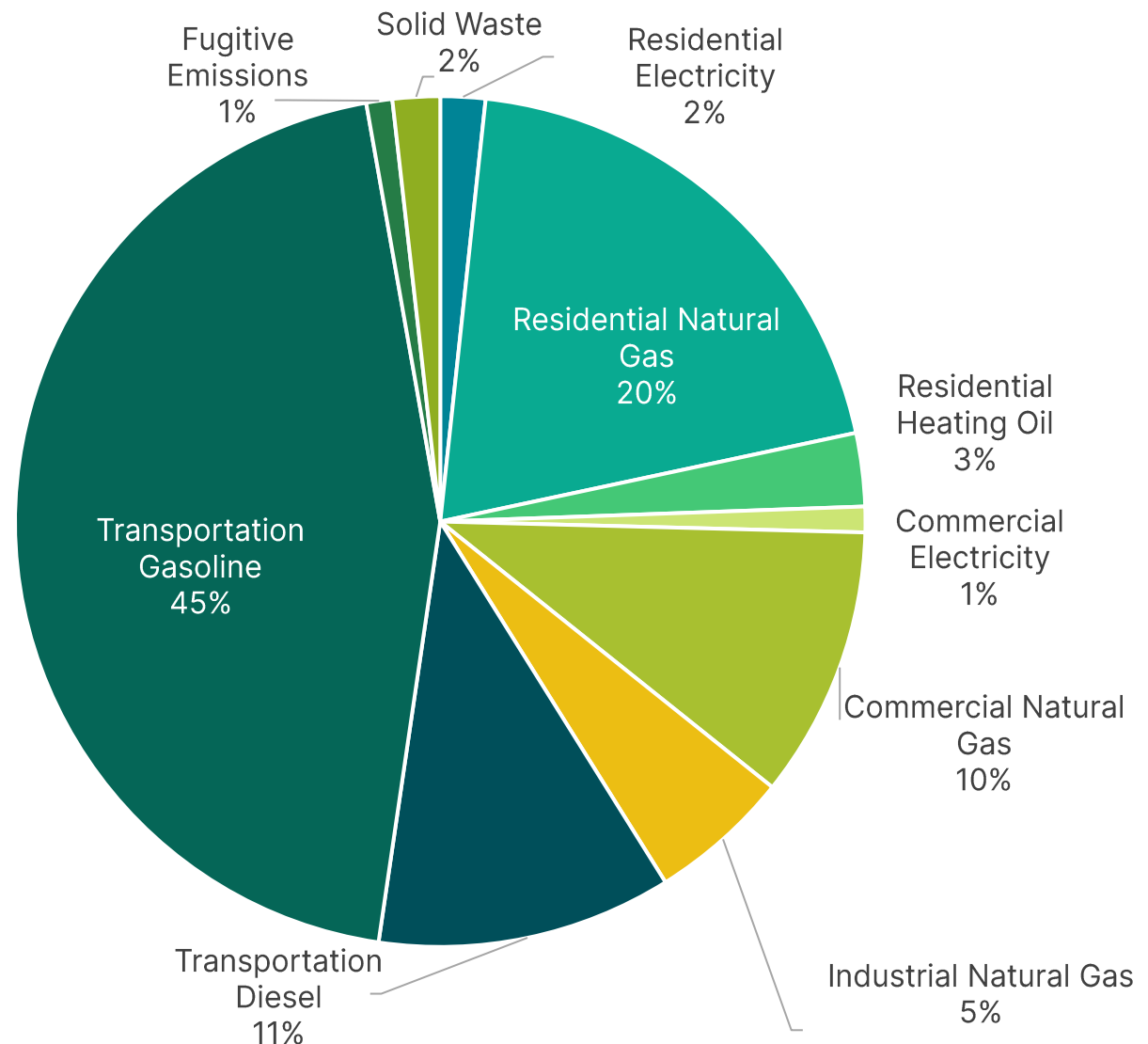
- 5% Decrease since 2009
- Lower per capita, transportation, and solid waste emissions
- Upward pressure of population growth
- Transportation and building energy primary sources
- **NOT on track to meet targets.**

Shoreline Community-Wide GHG Emissions 2009-2019



Shoreline 2019 Emissions

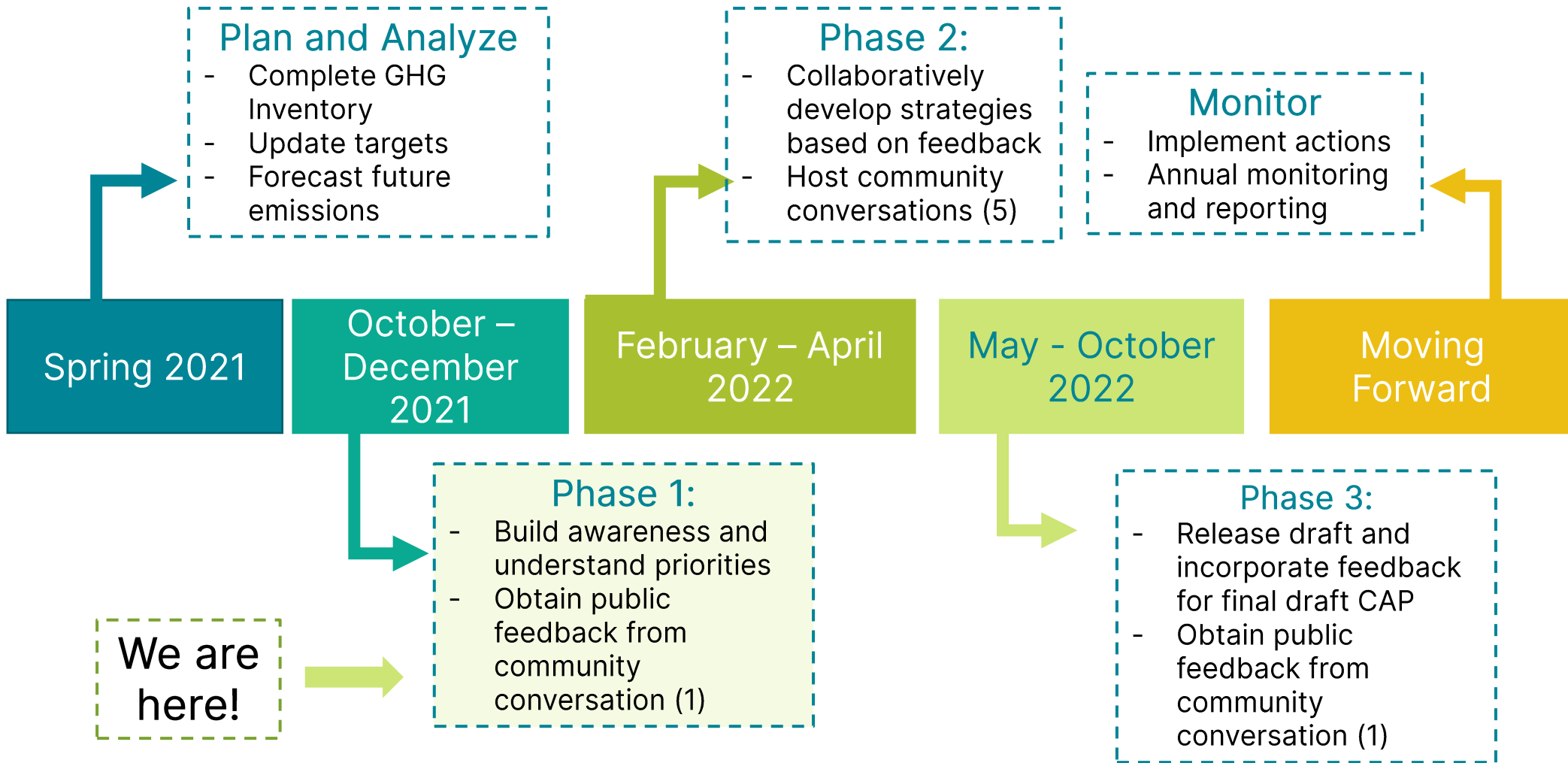
- Transportation and building energy largest emissions
- Transportation fuel use = 56%
- Natural Gas + Heating Oil = 38%
- Very low-emissions electricity (3%) from Seattle City Light



Roadmap

How we get there

Roadmap for Climate Action



Presentation Q&A



Option 1: Ask your question in the chat



Option 2: Raise your virtual hand to ask verbally

- *The 'Raise hand' button is at the bottom of the participant list.*

Setting a Shared Vision and Understanding Priorities

Discussion

Discussion Format

Zoom Poll
(10 min)



Transition
to
Breakout
Rooms

Discussion
(50 min)

Transition
Back to
Main
Group



Full Group
Report
Out
(10 min)



We are
here!

Setting Priorities

- Actions must:
 - Reduce emissions
 - Be cost effective
 - Be feasible
- Other Criteria and Co-Benefits:
 - Public Health
 - Climate Resiliency
 - Job Creation
 - Justice and Equity
 - Ecosystem Health
 - Cost Savings



Zoom Poll

Which TWO of the following factors are MOST important for the City to consider when evaluating actions to include in the CAP?

Public health: Protects health and well-being; improving our environment to prevent lung, heart, and other diseases.

Climate resiliency: Strengthens the community's ability to withstand climate hazards like hotter temperatures, floods, wildfire, and drought.

Job creation: Increases green job creation or supports economic recovery.

Justice and equity: Increases equity by reducing historic or current disparities.

Ecosystem health: Protects and preserves Shoreline's habitats, species, water, or air quality.

Cost savings: Financial savings for Shoreline residents or the City from lower energy bills, reduced health expenses, etc. tied to climate action initiatives.

Other: Please mark "other" and share in the chat.

Discussion Format

Zoom Poll
(10 min)



Transition
to
Breakout
Rooms

Discussion
(50 min)

Transition
Back to
Main
Group



Full Group
Report
Out
(10 min)



We are
here!

Discussion Questions

Q1. What do you love about Shoreline that you want to see continue in the future?

Q2. What are some challenges of living in Shoreline or what would you like to see more of in Shoreline in the future?

Q3. When you think about the local, near-term impacts of climate change to our community, like flooding, extreme heat, and wildfire smoke, what aspects of our community are you most concerned about? Why? Are there other community concerns you'd like to add?

Transition to Breakout Rooms

Group Report Out

Next Steps

Next Steps



- **Workshop #1 Meeting Summary**
- **February – April: Topic Based Workshops**
- **Early Summer: Workshop to review draft action list**

Additional Feedback Opportunities



Visit

www.shorelinewa.gov/climate

to:

- **Find info on future Workshops**
- **Sign up for project updates**
- **Take our survey**

Additional feedback can be sent to:

Cameron Reed – creed@shorelinewa.gov

Thank you!