

Community Climate Conversation

Fostering Community Resilience — Capturing Carbon
in Trees and Ecosystems

Icebreaker



Please rename yourself with your first name and your neighborhood

To change your name:

- Click on 'Participants' → Hover over your name → Click 'More' then 'rename'



In the Zoom chat, please answer:

What does a resilient community look like to you?

Workshop Overview

Workshop Purpose

- Review Climate Action Planning process
- Recap feedback from Community Climate Conversation #3
- Share goal for Community Climate Conversation #4
- Introduce proposed sequestration and resiliency strategies and actions
- Review actions to get community feedback

Workshop Agenda

- Welcome and Introductions
- Recap of CCC #3 Feedback
- Presentation: CAP Overview
 - Review of CAP Goals
 - CCC #4 Goals
- Presentation: Sequestration + Resiliency
 - Overview
 - Goals/Targets
 - Action List
- Breakout Room Discussion
- Wrap Up and Adjourn

Zoom Poll

Which Focus Area would you prefer to discuss in breakout rooms?

Sequestration

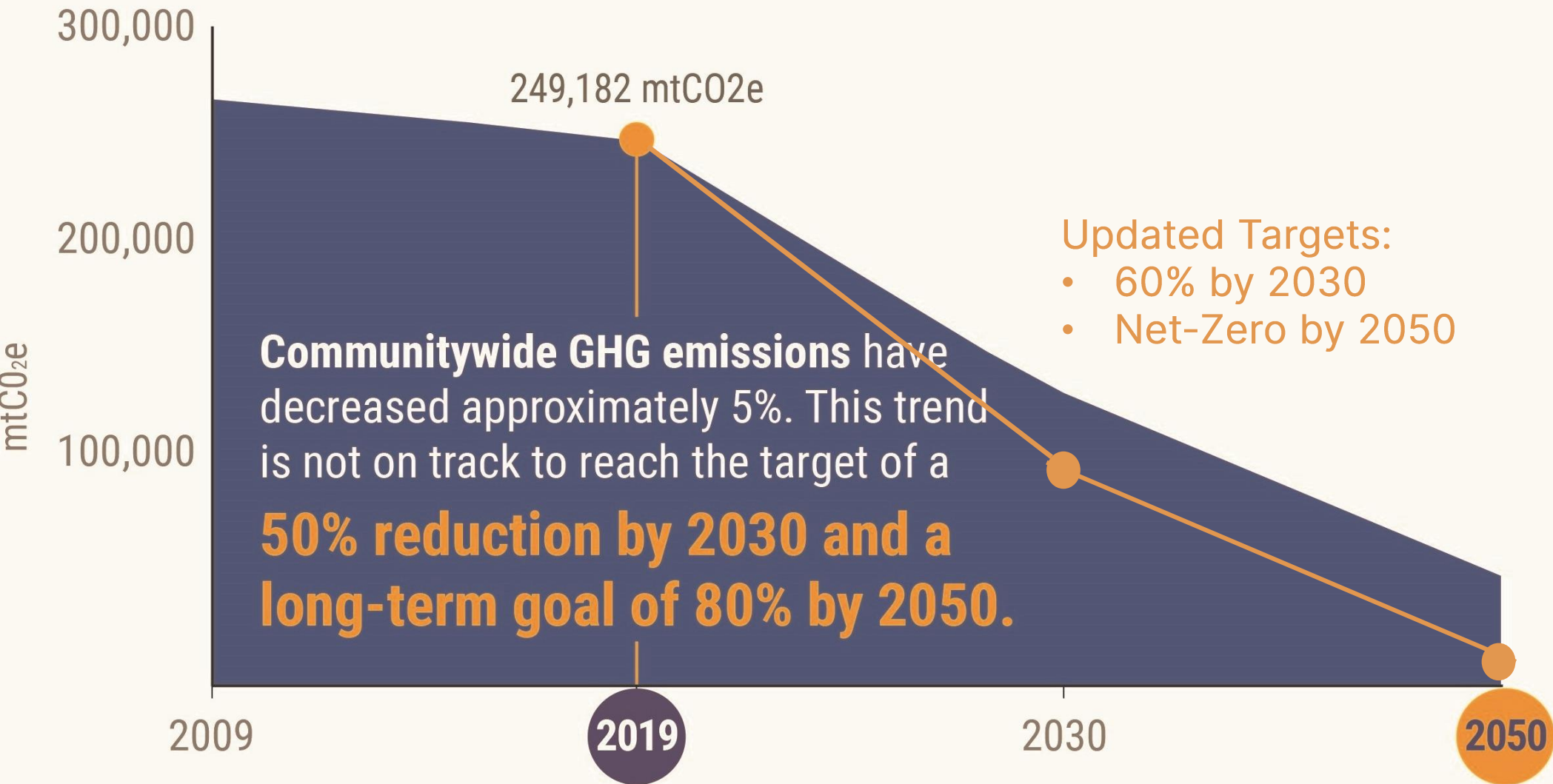
Resiliency

Either is fine / I have no preference

Shoreline Climate Action Plan (CAP)

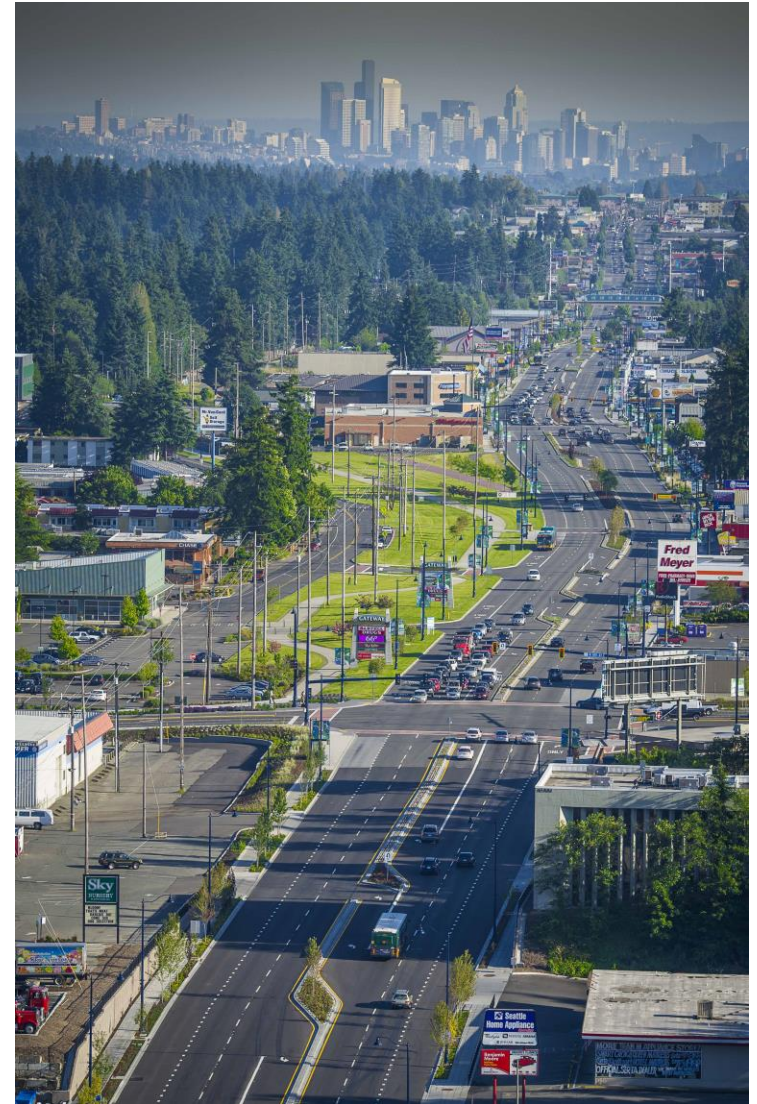
Overview of the planning process so far

Shoreline GHG Emissions 2009-2019

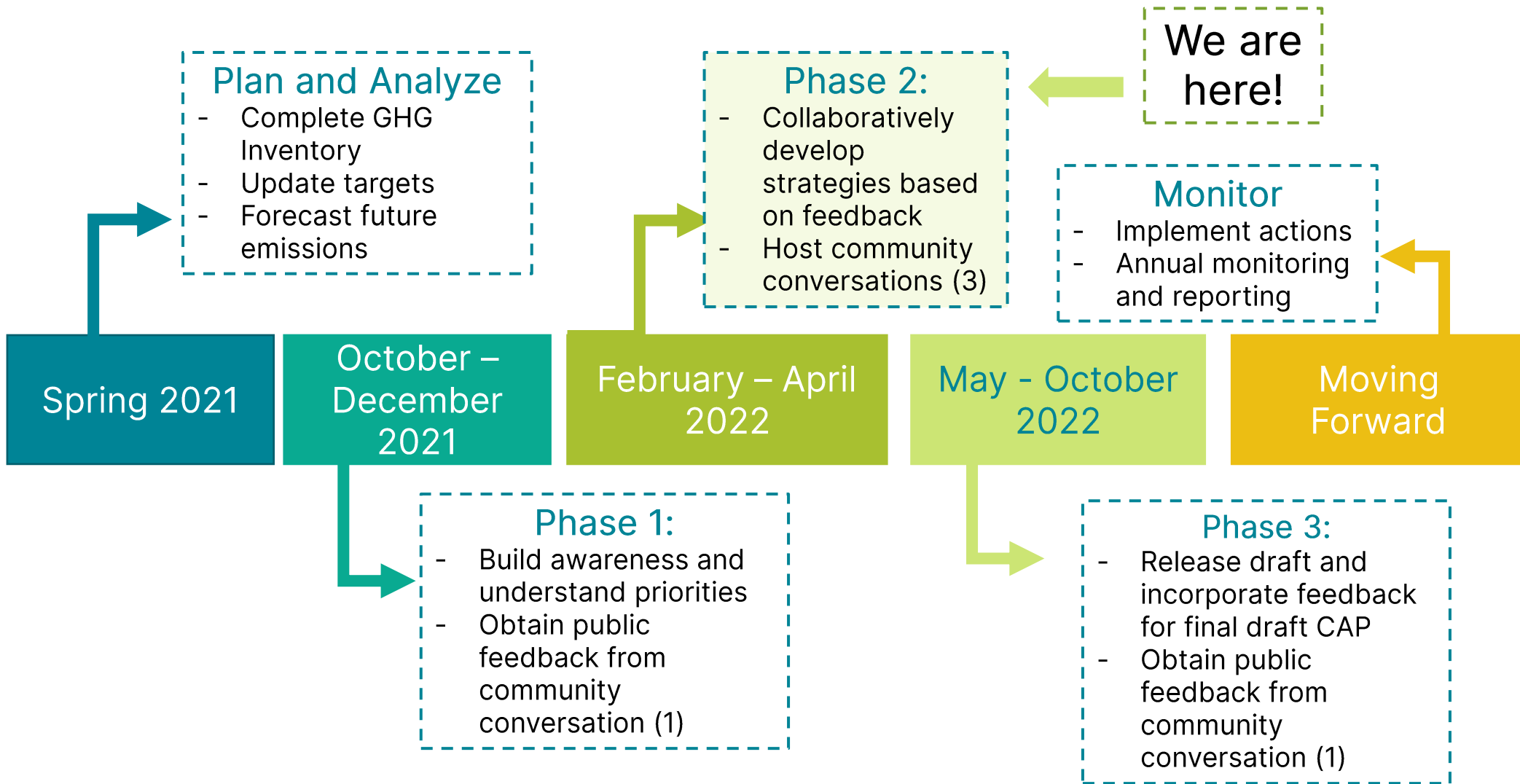


Shoreline CAP

- Identify **Key City Actions** to:
 1. Reduce emissions
 2. Protect from impacts
 3. Capture more carbon
- Address **Equity**
- Focus on Next **9-10** Years
- Provide Roadmap to **2050**



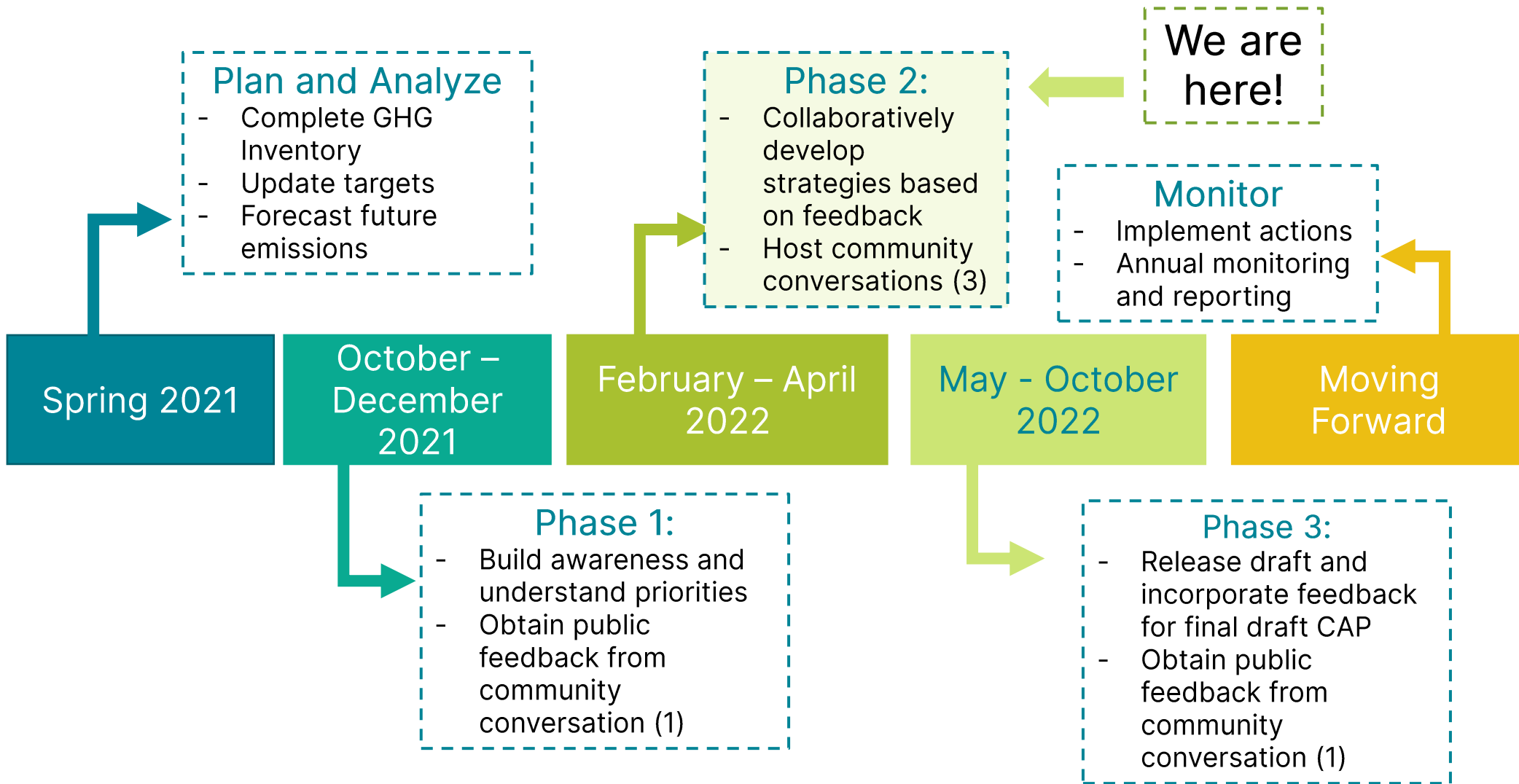
Project Timeline



Workshop 3 Feedback RECAP

- **Concerns + Equity**
 - Participants had concerns about...
- **Gap Analysis**
 - Participants identified gaps...
- **Level of Support**
 - Participants generally supported...

Project Timeline



Presentation Q&A



Ask your question in the chat!



If unable to ask question in chat, please utilize the 'Raise hand' feature

- *The 'Raise hand' button is at the bottom of the participant list.*

Ecosystems and Sequestration in Shoreline

Overview, Goals/Targets, Action List

What Will the CAP Include?

Actions to reduce greenhouse gases to prevent climate change



Mitigation



Sequestration

Actions to increase the amount of carbon captured by trees and natural systems

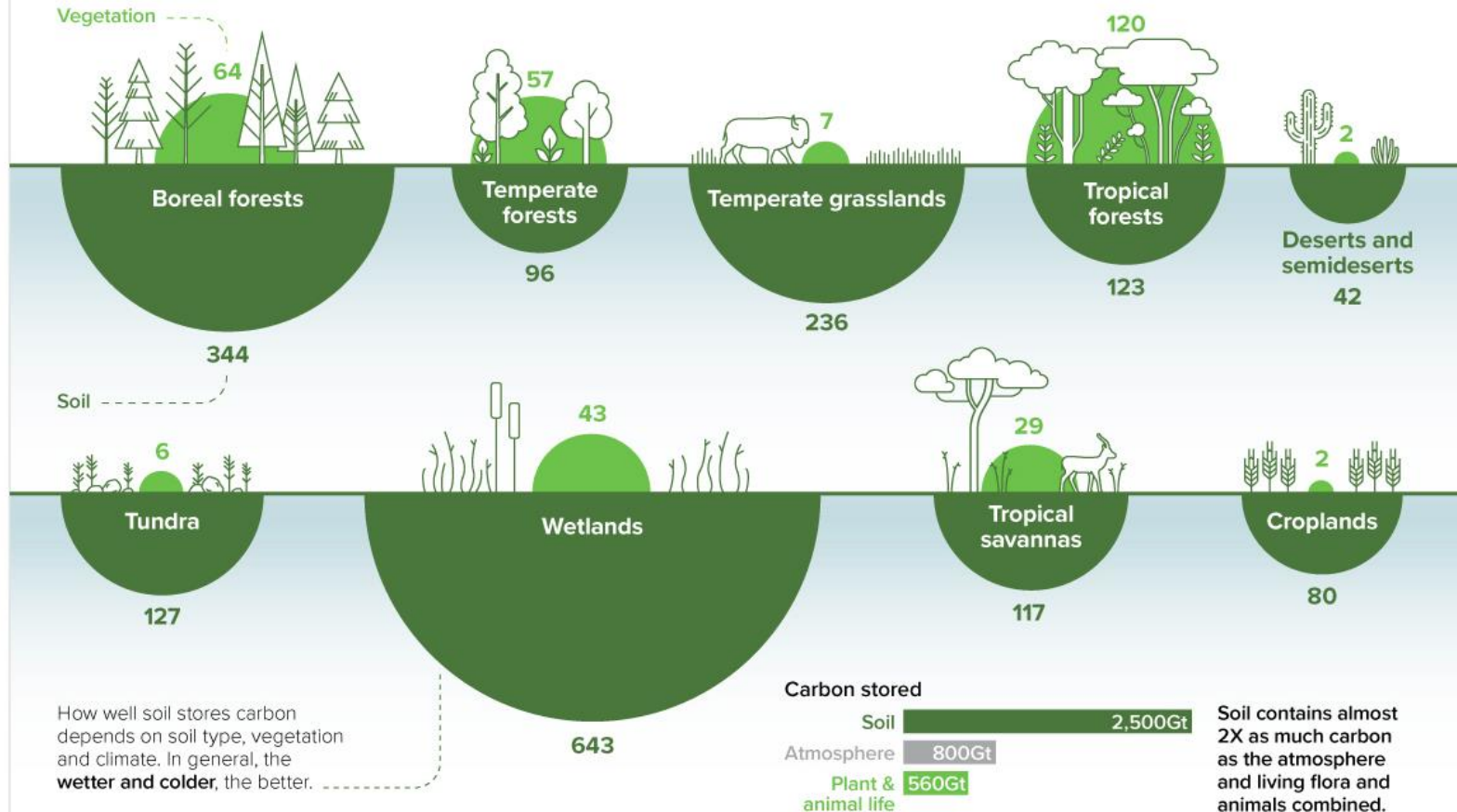


Adaptation/
Resilience

Actions to prepare the community for the impacts of climate change, especially the most vulnerable

What is Sequestration?

Carbon Storage Tonnes of Carbon per Hectare*



Shoreline's Urban Forest



37%
URBAN TREE
CANOPY

- 66% in residential areas
- 14% public facilities & parks
- 21% increase 2009-2017



14%
POSSIBLE
PLANTING
AREA

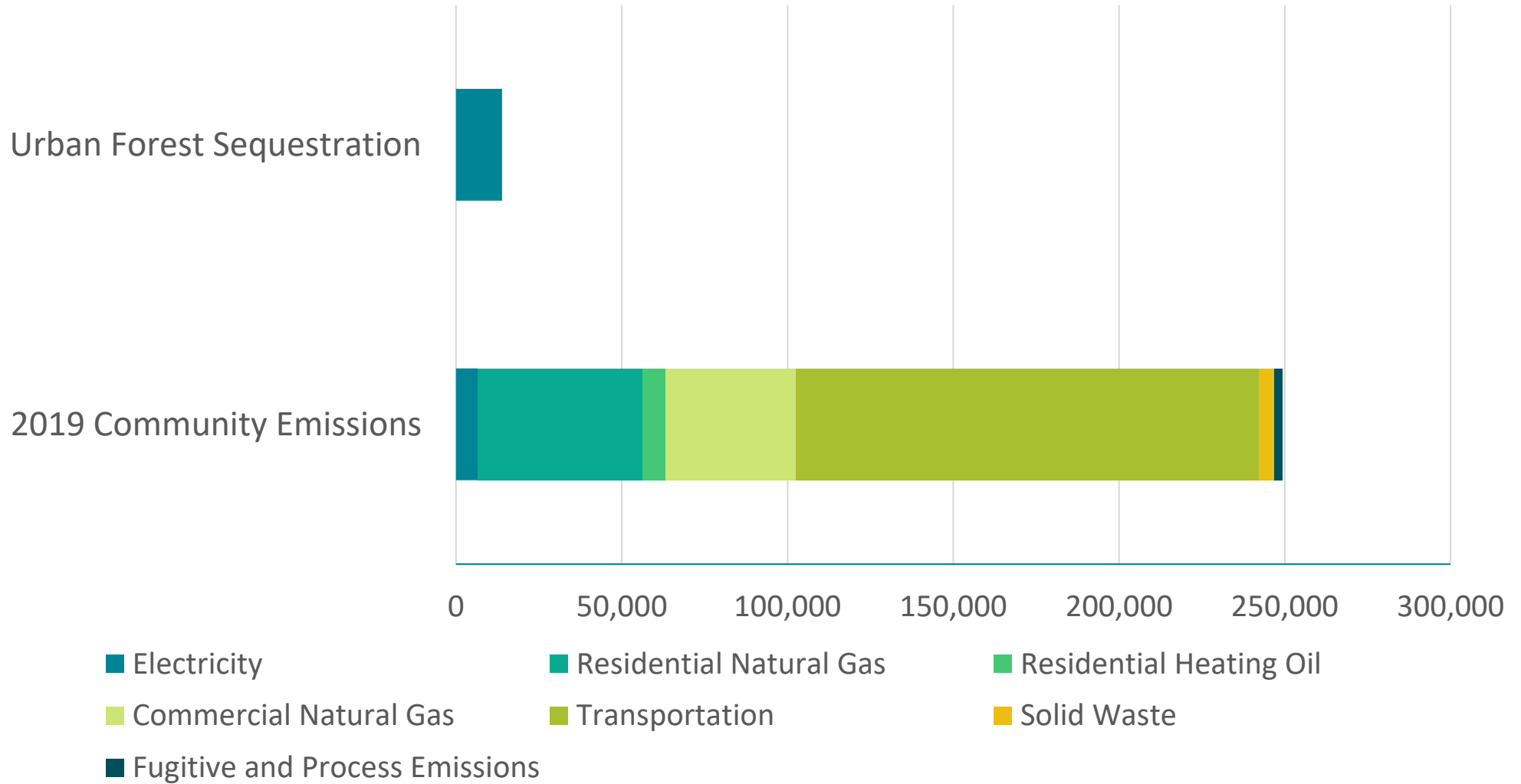
- 67% in low density residential areas

How much carbon can Shoreline's urban forest capture?

413,840 MTCO₂e *total stored*

13,890 MTCO₂e *captured annually*

Sequestration and Emissions



Progress to Date

- Tree City USA (2012)
- Urban Forest Strategic Plan (2014)
- King County 3 Million Trees Initiative (2021)
- Street tree planting
- Development Code and Incentives



Green Shoreline Partnership



Carbon Credit Programs



Compost Use for Soil Amendment

- Required in redevelopment & city projects
- Soak It Up Rebate Program
- Increased usage for Grounds Maintenance





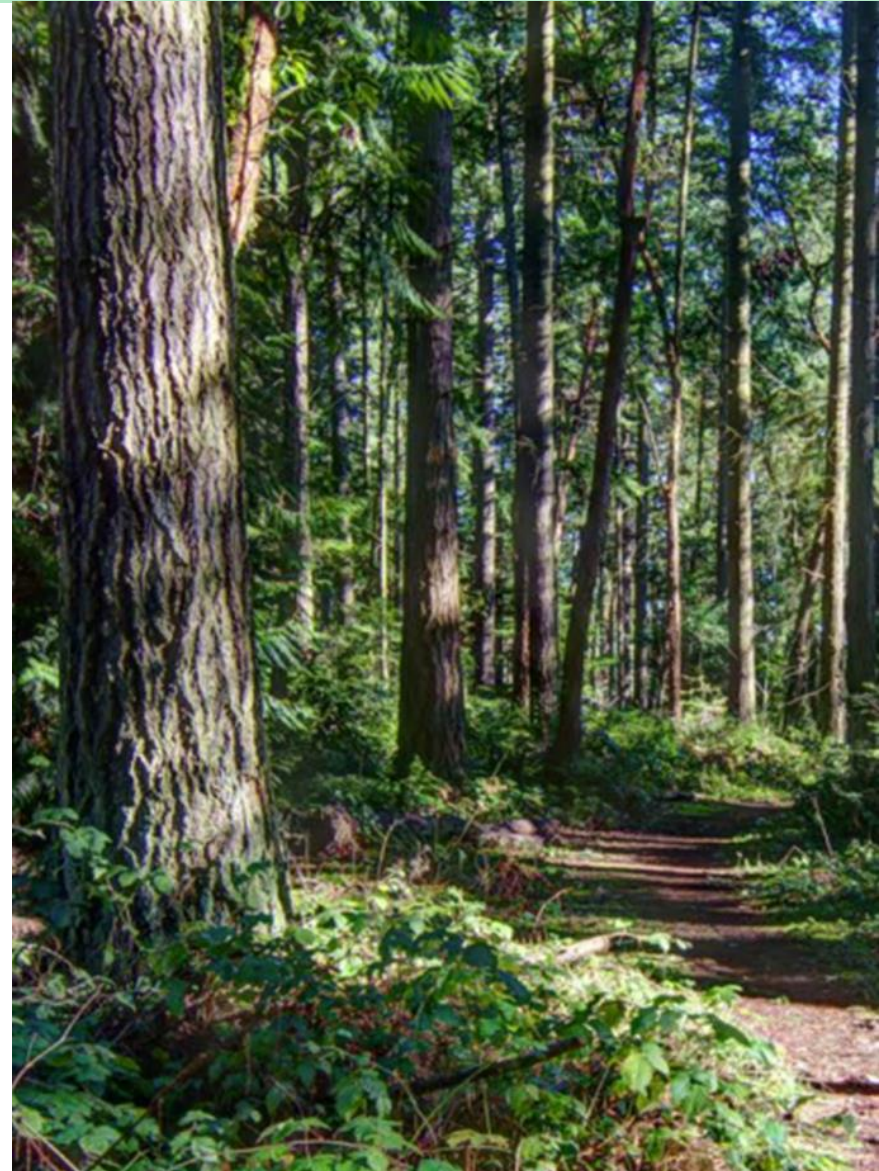
Goals and Strategies

1. Increase tree canopy and urban forest health

- Parks and open spaces
- Street Trees
- Private property
- Offset municipal operations emissions

2. Increase soil sequestration in natural and landscaped areas

- Increase compost use in city projects and development
- Education and resources for compost use



Presentation Q&A



Ask your question in the chat!



If unable to ask question in chat, please utilize the 'Raise hand' feature

- *The 'Raise hand' button is at the bottom of the participant list.*

Resilience and Preparedness

Overview, Goals/Targets, Action List

How is Climate Change Impacting our Region?

INCREASED HEAT

Average annual air temperature in the Puget Sound region is increasing (+1.3°F, 1895-2014), and is projected to be 5.5°F warmer in the 2050s.



PUBLIC HEALTH IMPACTS DUE TO HEAT



LESS SNOW

AVERAGE CASCADE SNOWPACK



HEAVY RAIN EVENTS ARE INCREASING

By the 2080s, our heaviest rain events are expected to be 22% heavier.

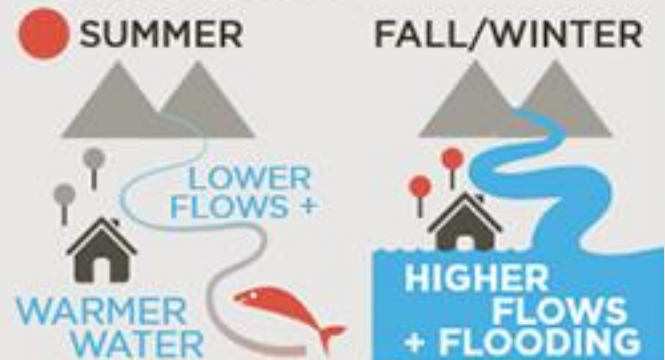


INCREASED WILDFIRE THREAT



4-fold Increase in annual area burned projected for Washington's forests by the 2040s.

EXTREME RIVER CONDITIONS



Climate Impacts and Resiliency Study

HIGH VULNERABILITY

MODERATE VULNERABILITY

LOW VULNERABILITY



Low-Lying Areas



Sensitive Ecosystems



Buildings and Development



Heat-related Illnesses



Air Quality

Storm Drains



Parks and Open Space



Housing



Pipes, Ditches and Culverts



Urban Trees



Mental Health Stress

Transportation



Emergency Services

Vector-borne Diseases



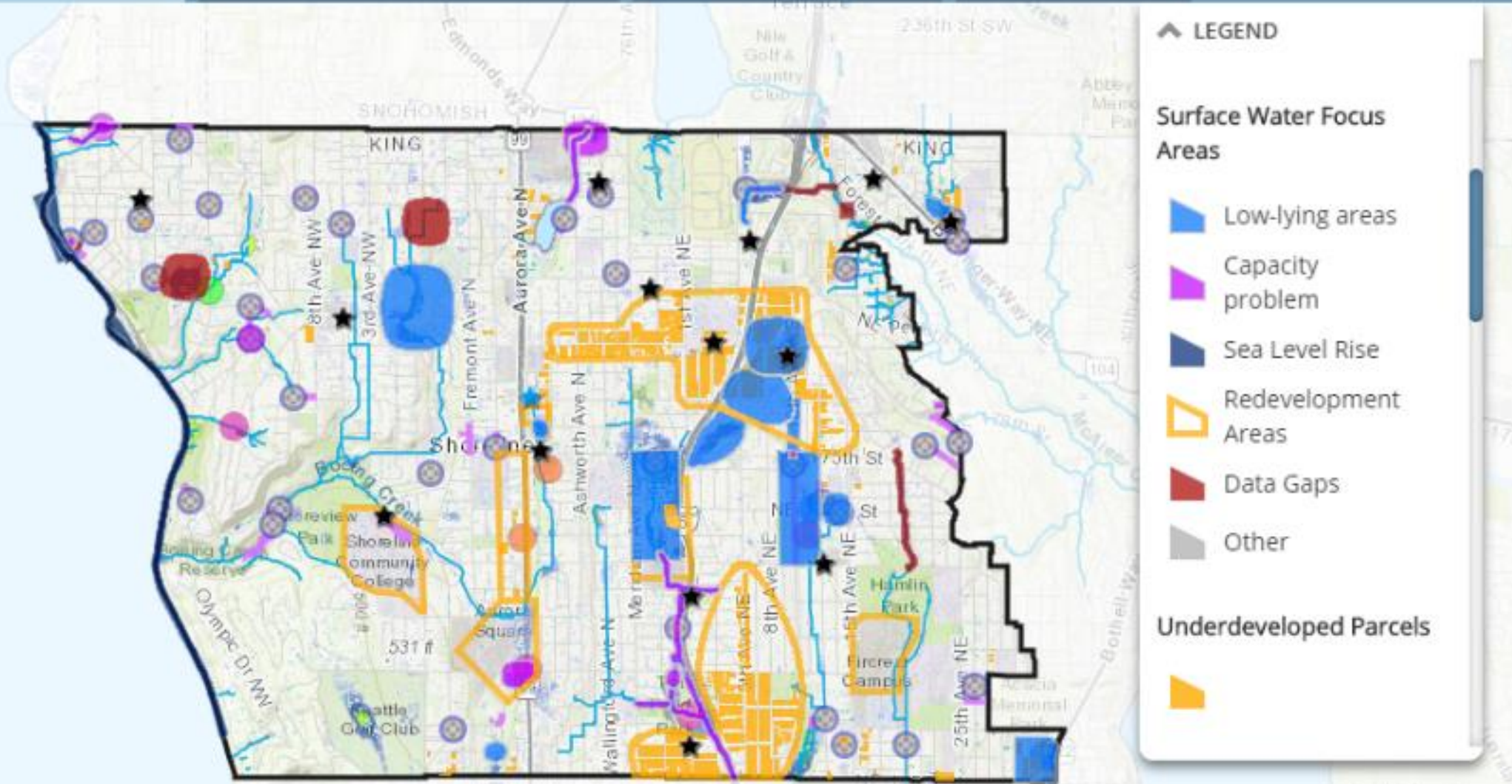
Climate Impacts Tool

Water Vulnerability

Step 3 | Urban Heat Island Effects

Step 4 | Equity & Justice

Step 5 | Wrap Up



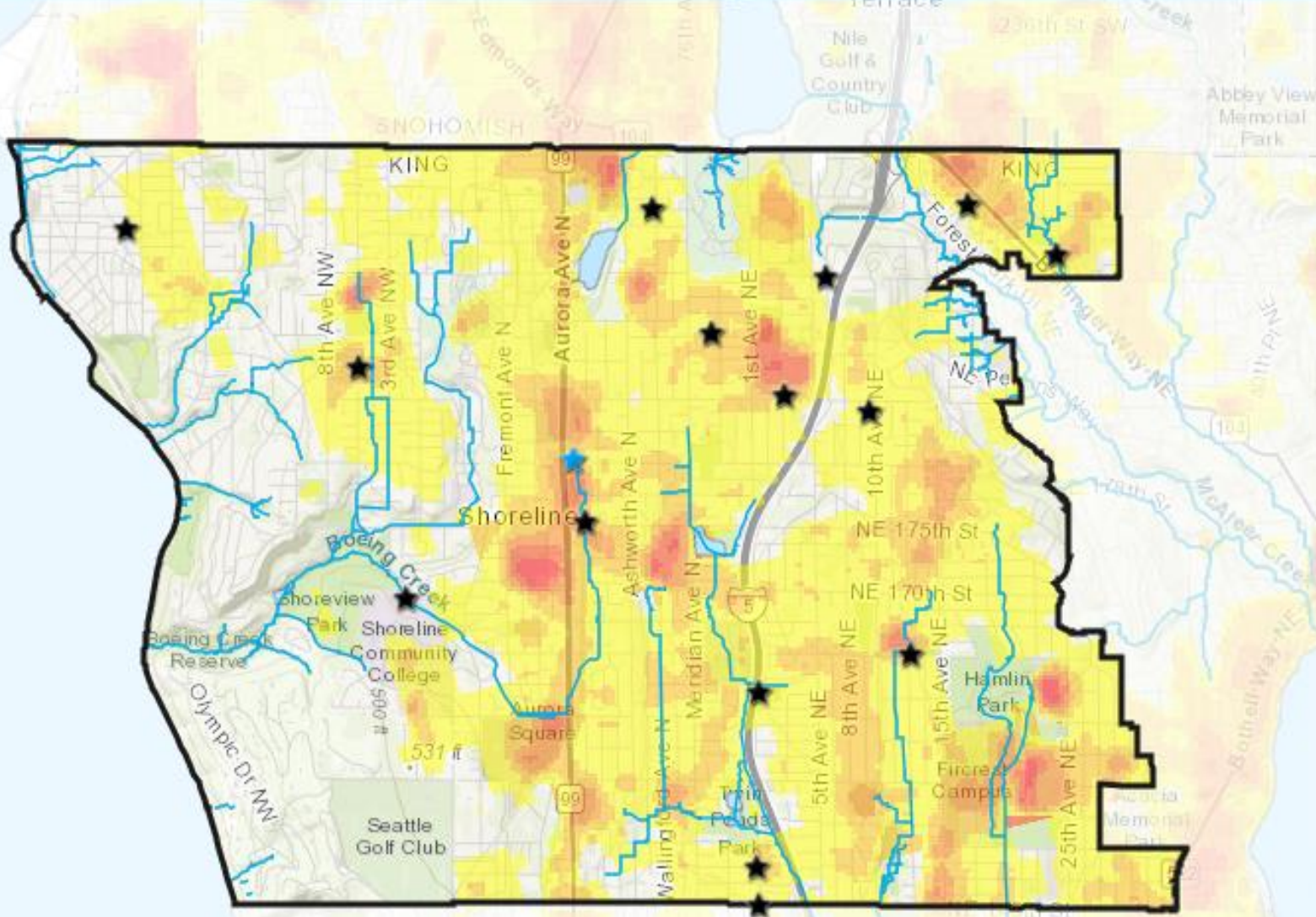
Urban Heat Islands

Surface Water Vulnerability

Step 3 | Urban Heat Island Effects

Step 4 | Equity & Justice

Step 5 | Wrap Up



LEGEND

Stream



Open Water



Urban Heat Islands for U.S. cities



1 Mild heat area



2



3



4



5 Severe heat area

Equity, Justice & Frontline Communities

| Surface Water Vulnerability

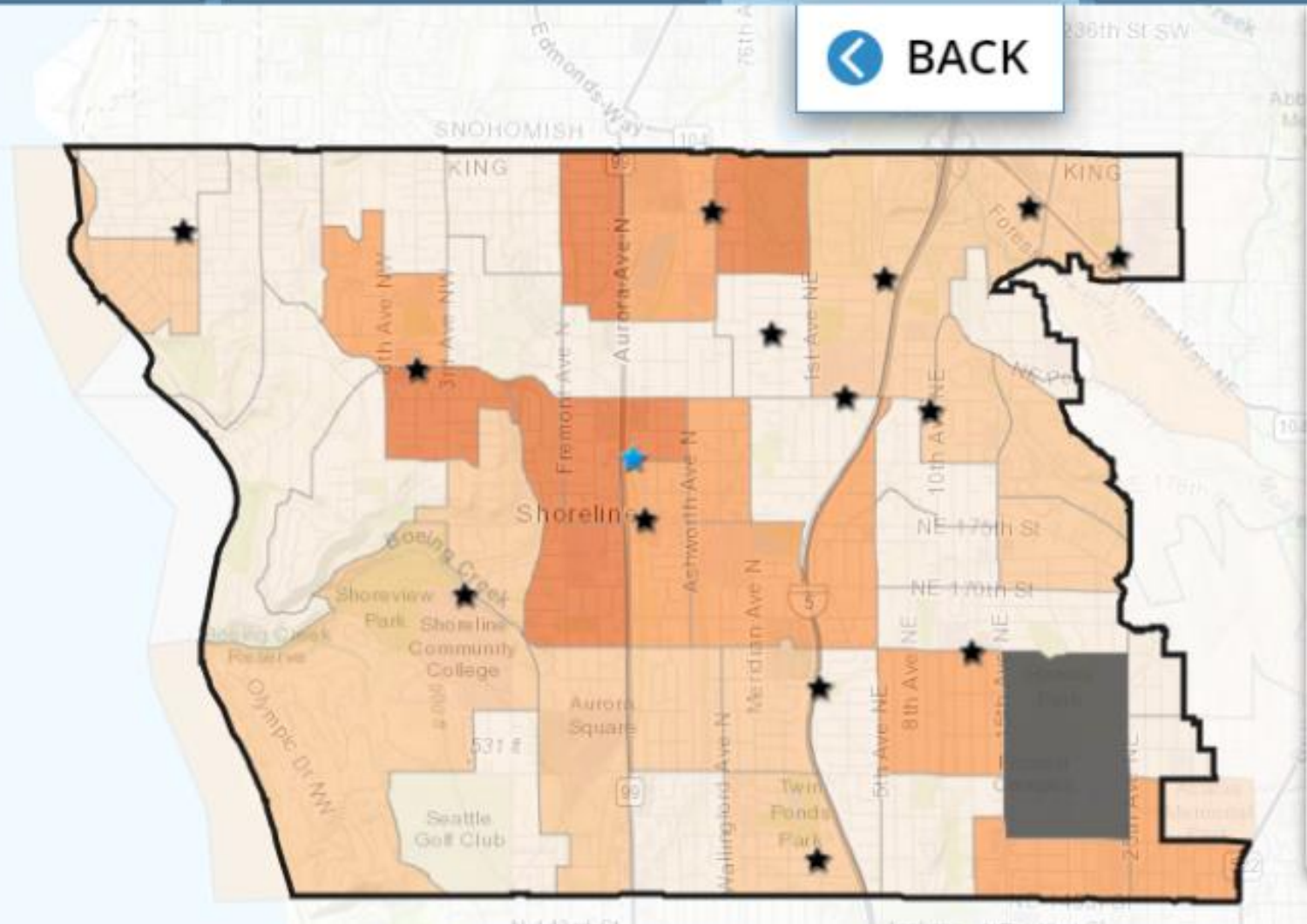
Step 3 | Urban Heat Island Effects

Step 4 | Equity & Justice

Step 5 | Wrap Up



BACK



LEGEND

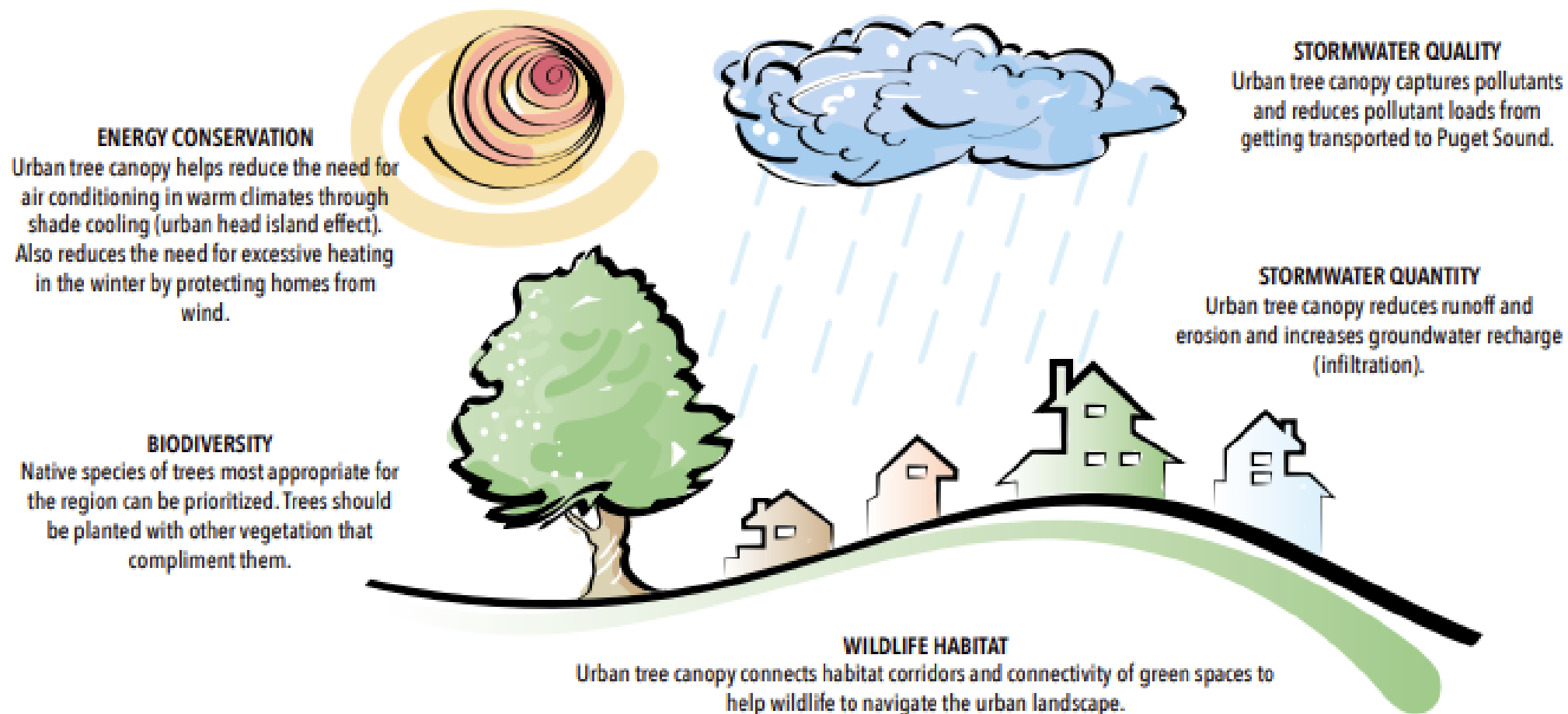
Limited Data Available (Block Group 4, Tract 211)

Limited English Speaking Households

Perc_LimitedEnglish

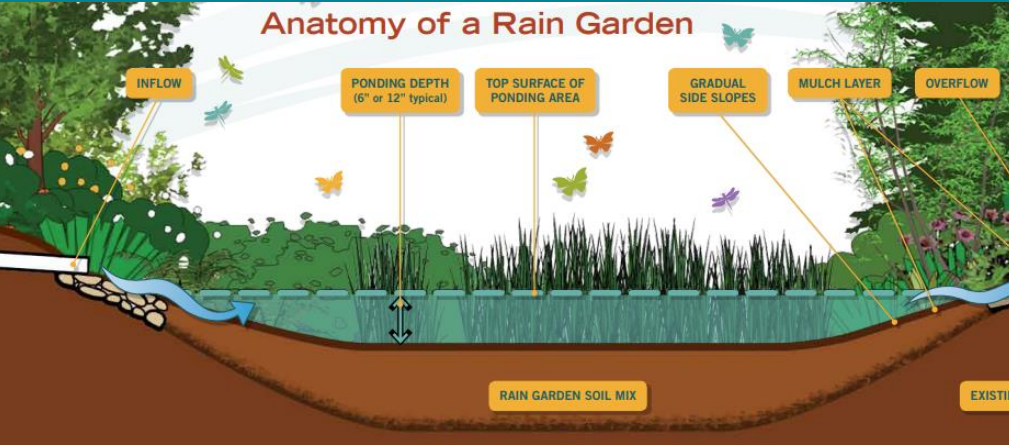
- 13% - 15%
- 10% - 12%
- 7% - 9%
- 4% - 6%
- 0% - 3%

Benefits of Urban Trees



Source: Puget Sound Urban Tree Canopy and Stormwater Management Handbook (2021)

Green Stormwater Infrastructure



Community Preparedness

**New Washington All Time
High Temperature**

120°F

**Hanford, WA
June 29, 2021**

Beats the previous record of 118°F set at
Wahluke, WA on July 24, 1928 and Ice
Harbor Dam, WA on August 5, 1961.



Source: Seattle Times





Resilience & Preparedness – Goals & Strategies

1. Incorporate climate resiliency in new buildings, land use decisions, and public infrastructure
2. Strengthen community preparedness for extreme heat, flooding, & wildfire smoke events
3. Increase community awareness of and resiliency to climate impacts



Presentation Q&A



Ask your question in the chat!



If unable to ask question in chat, please utilize the 'Raise hand' feature

- *The 'Raise hand' button is at the bottom of the participant list.*

Breakout Rooms

Discussion Overview & Format

Discussion Format



Transition to
Breakout
Rooms

Discussion
Overview
(5 mins)

Discussion &
Feedback
Share
(45 mins)

Transition
Back to Main
Group



We are
here!

Discussion Overview

- Each room will cover **one focus area and its actions**
- Today's discussion will focus on **hearing your feedback** to help refine the Plan's sequestration and resiliency actions.
- Categories of discussion:
 - Strategy Opportunities & Barriers
 - Concerns & Equity
 - Gap Analysis
 - Level of Support

Transition to Breakout Rooms

Next Steps

Next Steps



- **Workshop #4 Meeting Summary**
- **Early Summer: Final Community Climate Conversation to review draft action list**

Additional Feedback Opportunities



Visit www.shorelinewa.gov/climate to:

- **Find info on future Workshops**
- **Sign up for project updates**
- **Take our survey**

Additional feedback can be
sent to:

Cameron Reed – creed@shorelinewa.gov

Thank you!