

# Shoreline City Council

## Update on 145th Street Corridor and I-5 Interchange Improvements

May 9, 2022



# Agenda

- Welcome and agenda
- Project orientation and timeline
- Project background and overview
- Interchange concept to construction
- Other project updates
- Questions

# In attendance

- **Cory Nau**, Engineer II, Capital Projects, 145th Street Corridor, City of Shoreline
- **John McKenzie**, Project Manager, 145th Street Corridor, Jacobs
- **Rob McGaughey**, Project Manager, I-5 Interchange, Lochner

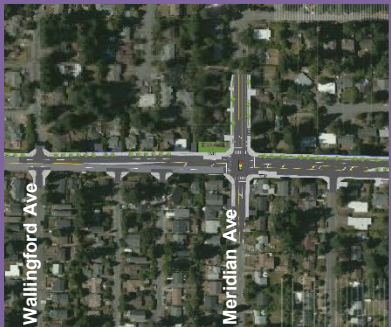
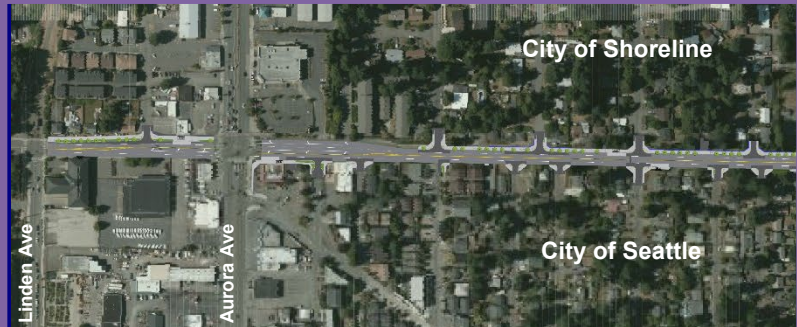
# Project orientation: 145th Street



Phase 3

Phase 2

Phase 1

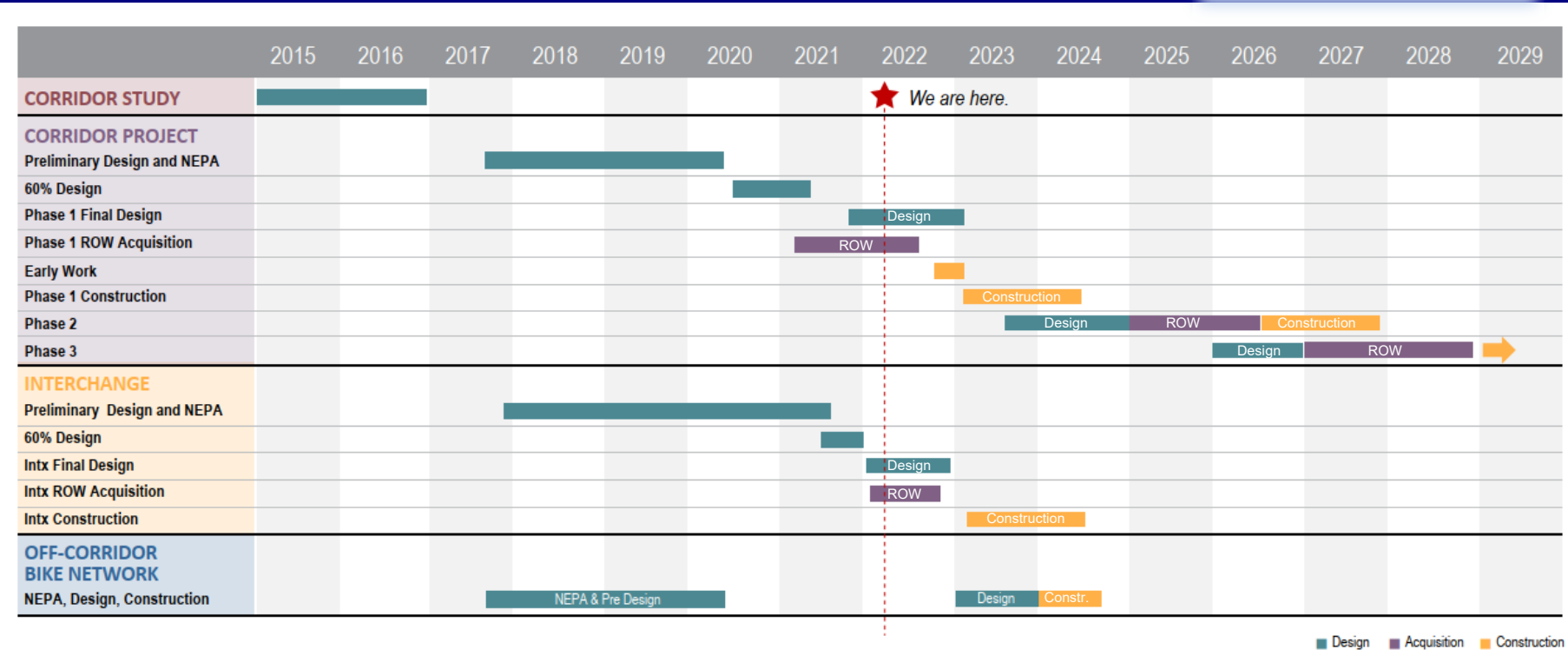


145<sup>th</sup> Multimodal Corridor Project

I-5 Interchange Improvements



# Project timeline



# Project funding update

**Total cost of implementation:  
\$67.8M**

## Secured Funds

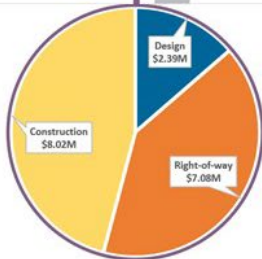
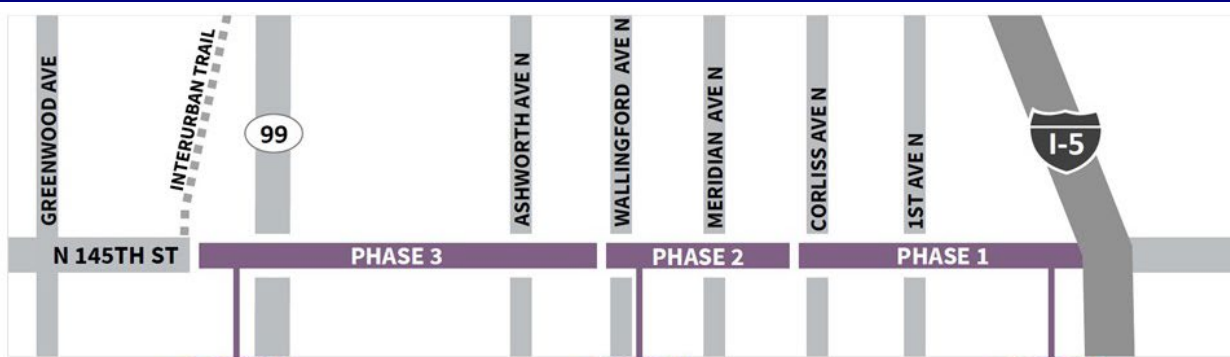
These project funds are already dedicated to the project in either the local, state, or federal budget.

## Unsecured Funds

These project funds are not yet identified, but they may come from either local, state, or federal sources.

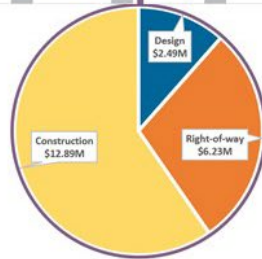
## Partially Secured Funds

Some of these project funds are already dedicated to the project in either the local, state, or federal budget, while some funds are not yet identified.



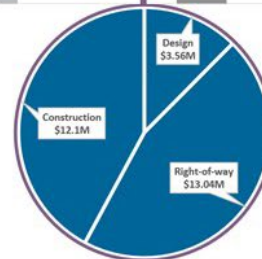
### Phase 3

Wallingford Ave to Linden Ave N  
Anticipated cost for this phase: \$17.5M



### Phase 2

Corliss Ave to Wallingford Ave  
Anticipated cost for this phase: \$21.6M



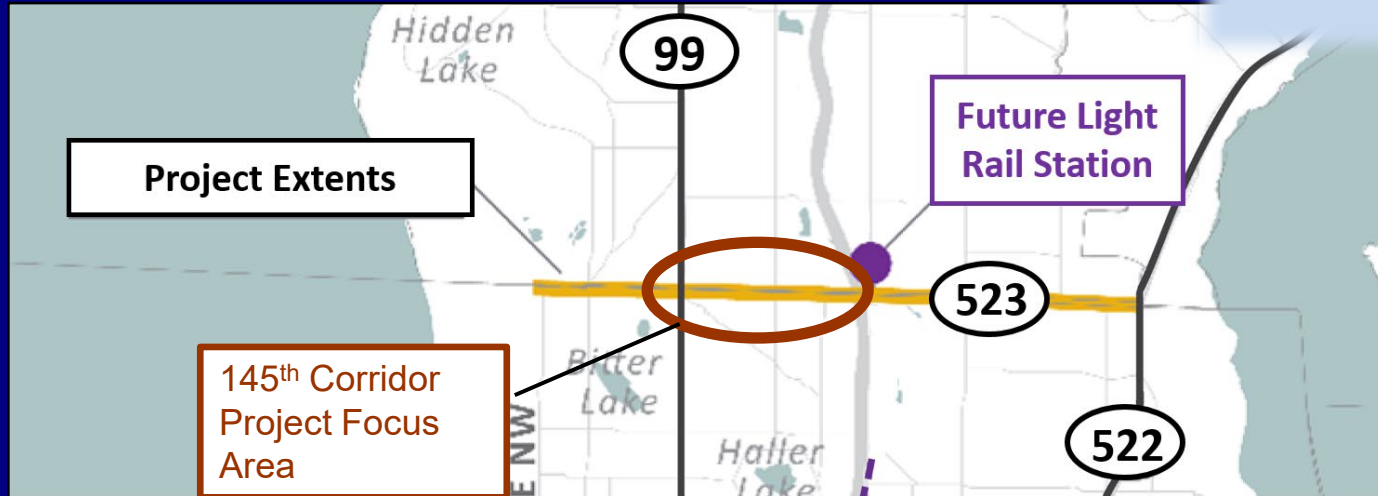
### Phase 1

I-5 to Corliss Ave  
Anticipated cost for this phase: \$28.7M

# Project Background & Overview



# Project purpose: 145th St. is a regionally significant corridor



- Connection to Aurora, I-5, and Lake City Way/Bothell Way
- Connection for Shoreline and Seattle neighborhoods, businesses, parks and services
- Future light rail station at NE 148th St. and I-5



# Project purpose: existing problems



Traffic congestion  
and growth



Limited transit service,  
minimal amenities

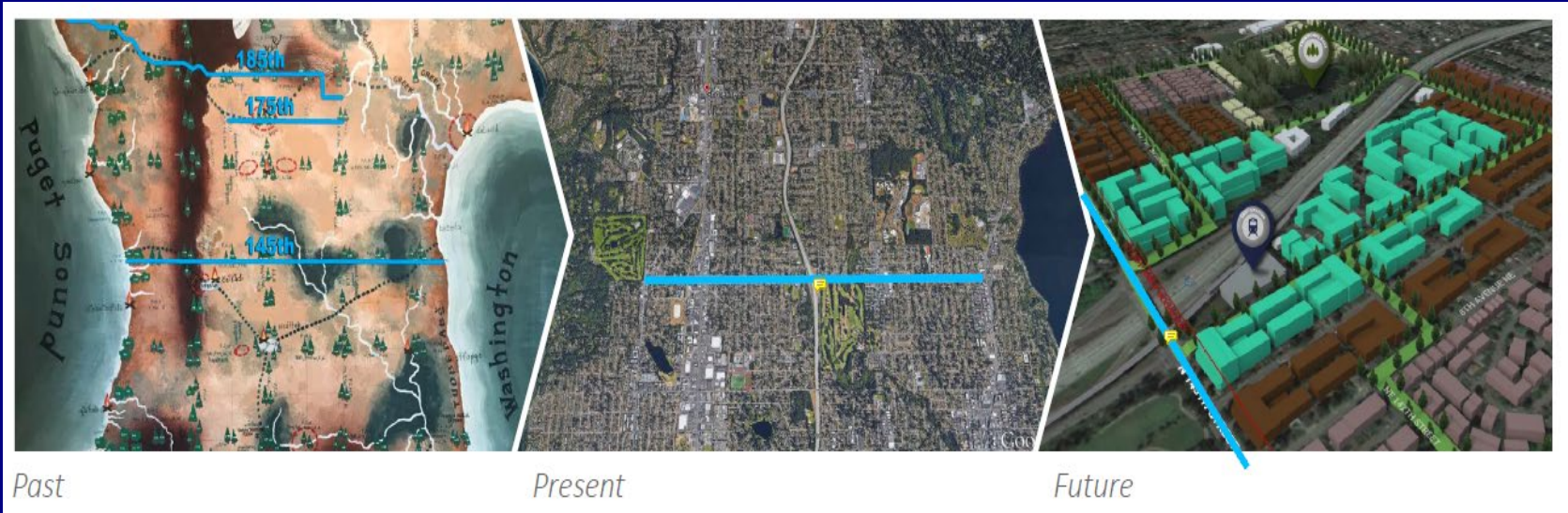


Barriers to walkers,  
no place for bikes

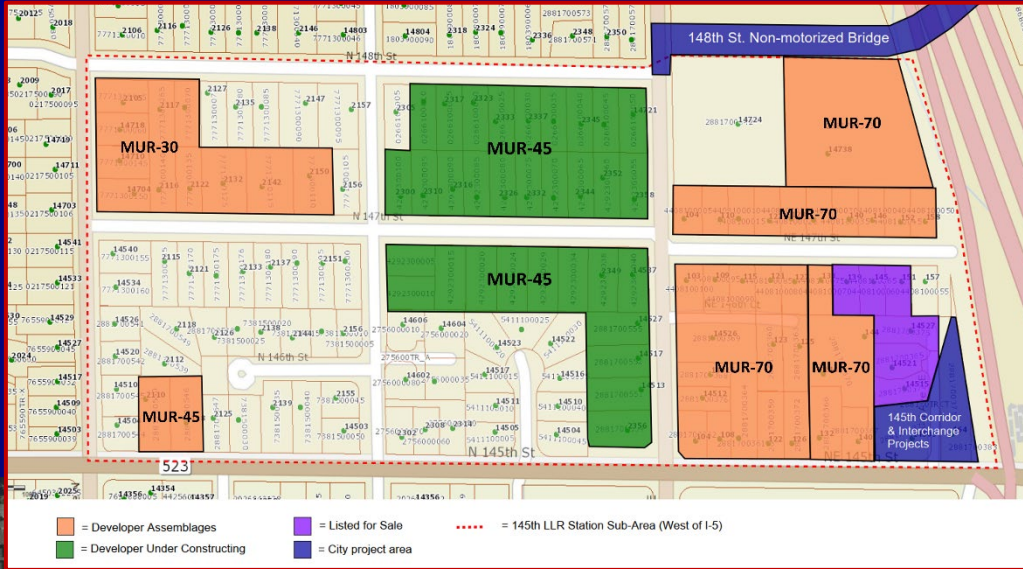


High number of  
collisions

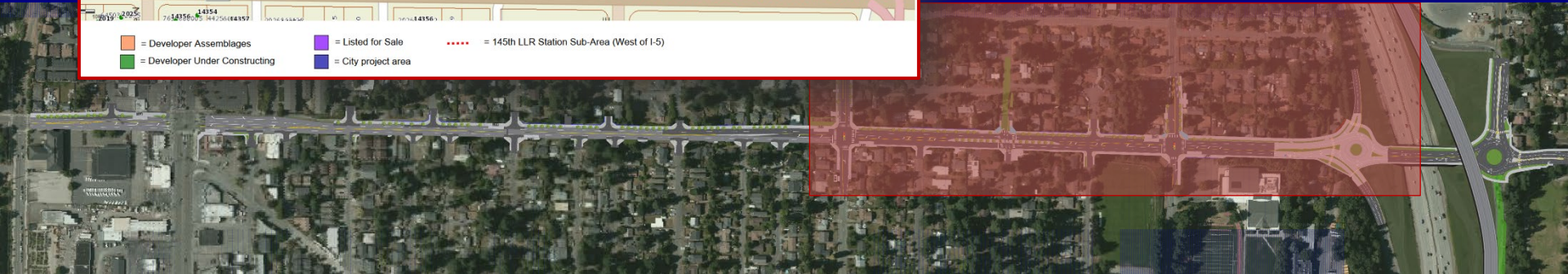
# Project purpose: evolving corridor context



# Project purpose: evolving corridor context



Redevelopment activity map,  
Jan 2022



# Project goals

- Ensure that all modes are accommodated
- Address traffic congestion and delay
- Develop improvements that:
  - Support the local economy
  - Protect the environment
  - Support a vibrant community



# Project partners



King County



SOUNDTRANSIT



SDOT

Seattle Department of Transportation

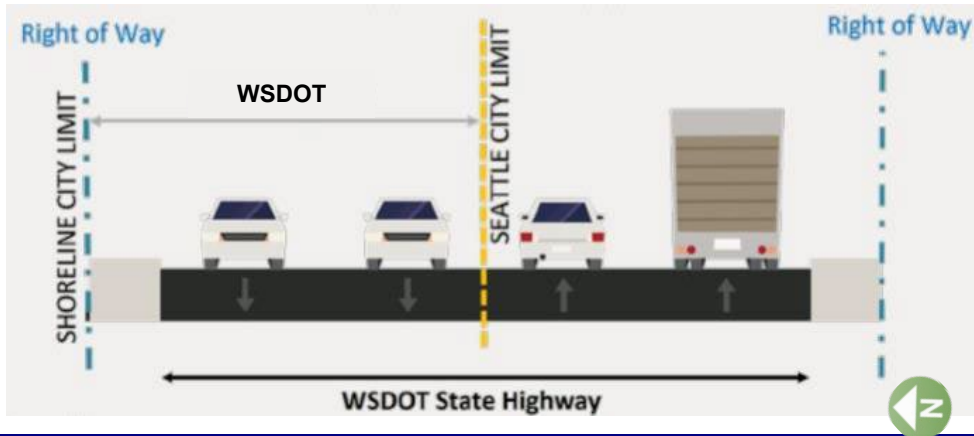
Puget Sound Regional Council  
PSRC



cascade  
BICYCLE CLUB



Seattle City Light



# Design developed through robust engagement



# Recent activities

- 2019:
  - Property owner outreach (145th Corridor)
  - Public Meeting & Virtual Open House (145th Corridor)
  - Roundabout Rodeo (Interchange)
- 2020:
  - Virtual Open House (Interchange)
  - Online presentation (Interchange)
- 2021:
  - Property owner outreach (145th Corridor)
  - Stakeholder group meetings (145th Corridor & Interchange)

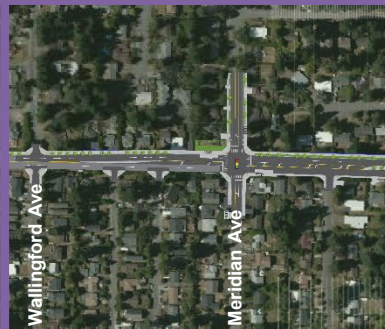
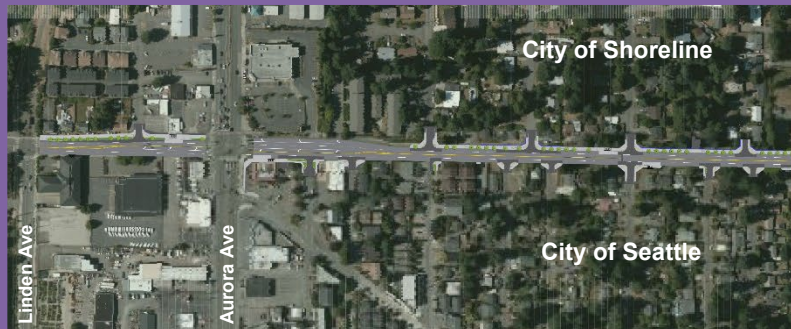
# Project design: 145th St. Multimodal Corridor & I-5 Interchange Improvements



Phase 3

Phase 2

Phase 1

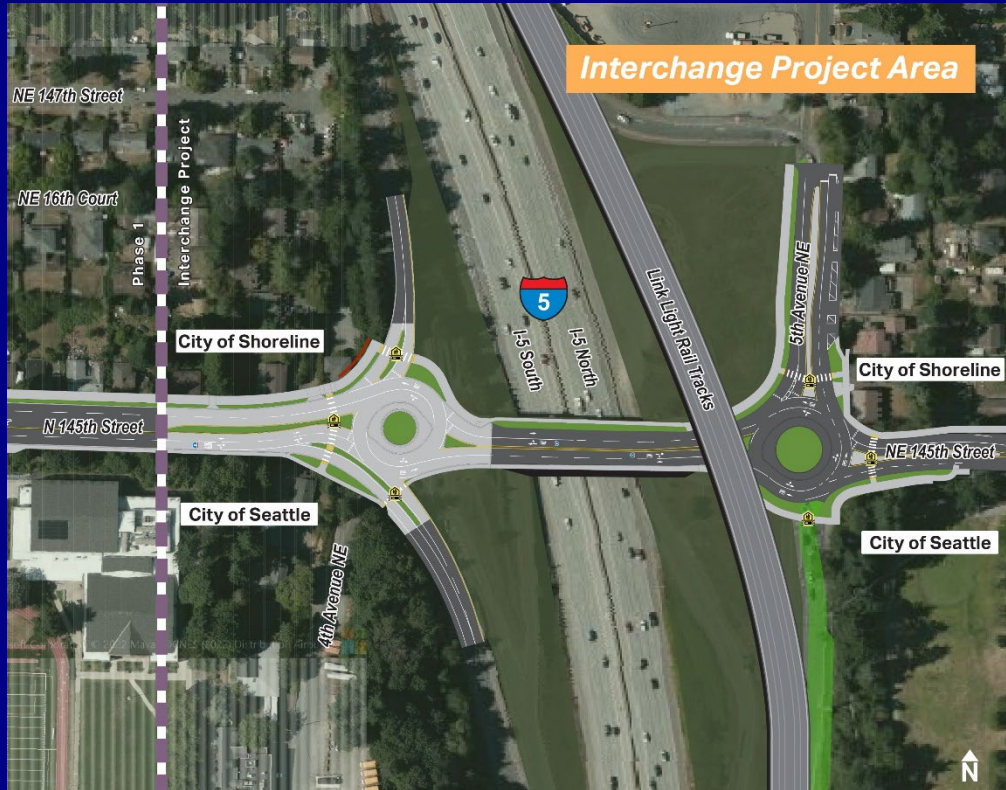


145<sup>th</sup> Multimodal Corridor Project

I-5 Interchange Improvements



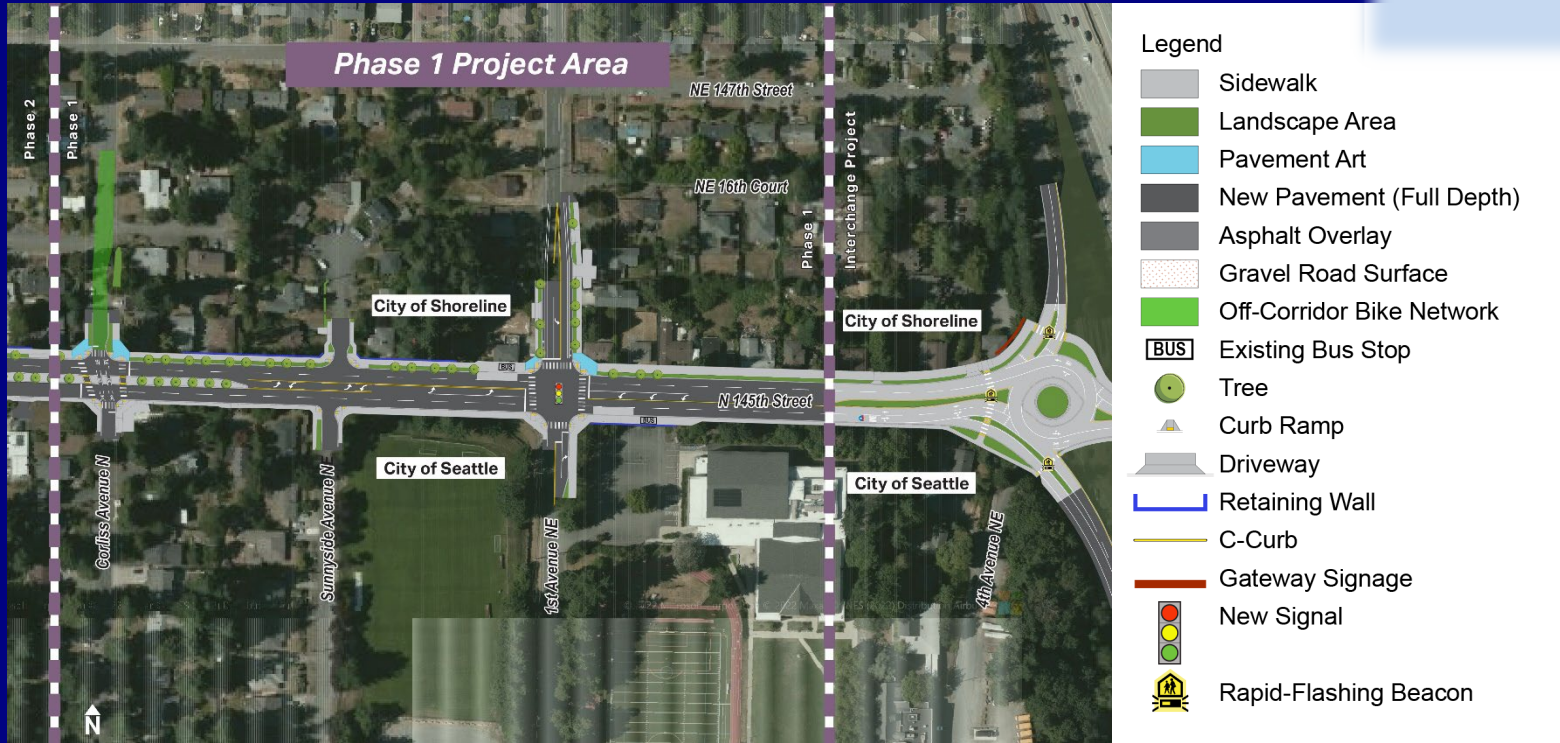
# I-5 Interchange improvements



## Legend

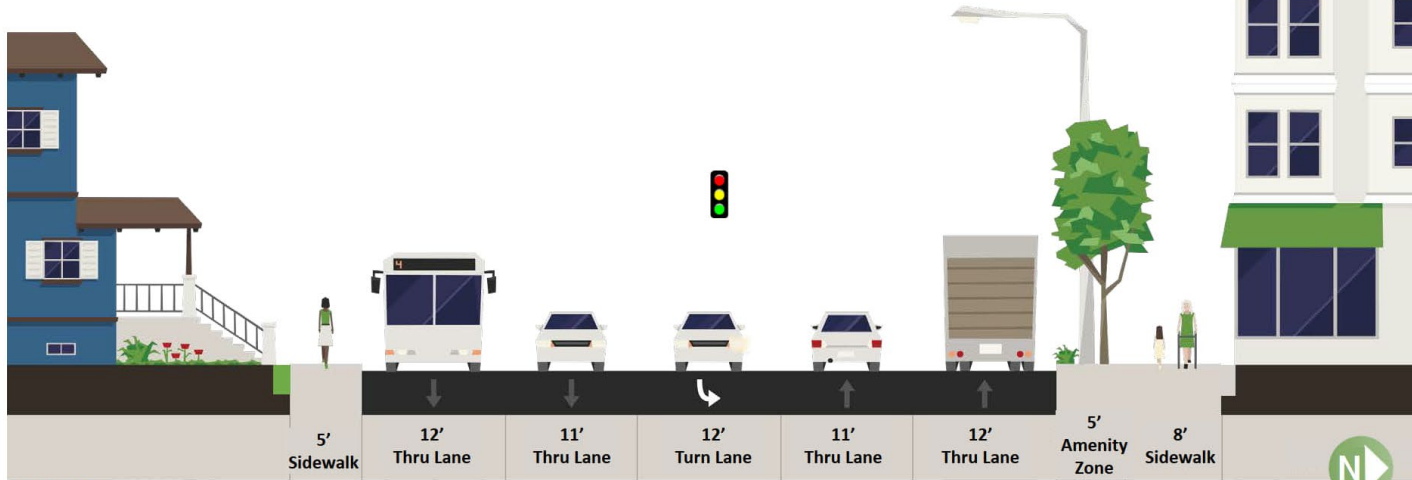
- Sidewalk
- Landscape Area
- Pavement Art
- New Pavement (Full Depth)
- Asphalt Overlay
- Gravel Road Surface
- Off-Corridor Bike Network
- Existing Bus Stop
- Tree
- Curb Ramp
- Driveway
- Retaining Wall
- C-Curb
- Gateway Signage
- New Signal
- Rapid-Flashing Beacon

# Corridor Phase 1: I-5 to Corliss Ave.



# Typical cross section

## 145<sup>th</sup> Street Near Meridian Avenue looking west



SEATTLE

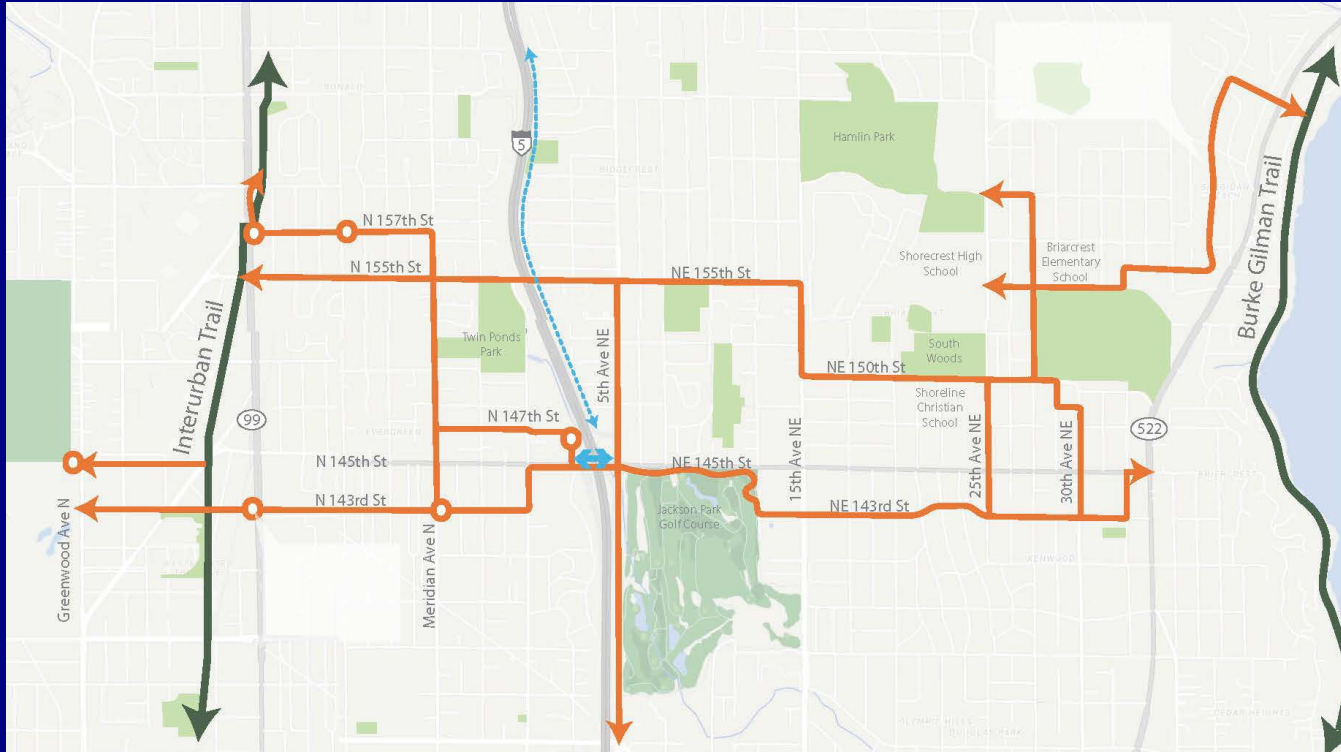


# 145th St. near Sunnyside Ave.



Looking west

# Off-corridor bike network



# Corridor Phase 2: Corliss Ave. to Wallingford Ave.



# Corridor Phase 3: Wallingford Ave. to Linden Ave. N



# Interchange Concept to Construction



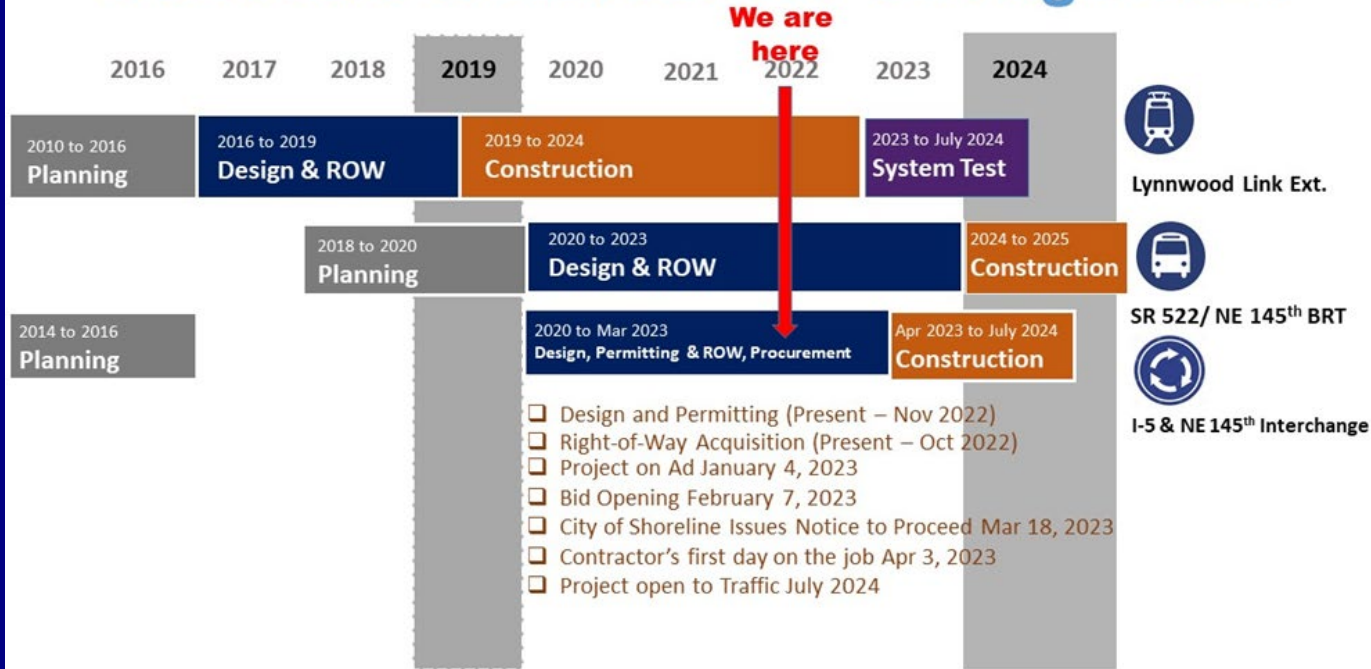


# Interchange project update

- Project schedule
- Pedestrian route
- Early works – by Sound Transit
- Utility coordination
- Construction phasing

# Interchange project schedule

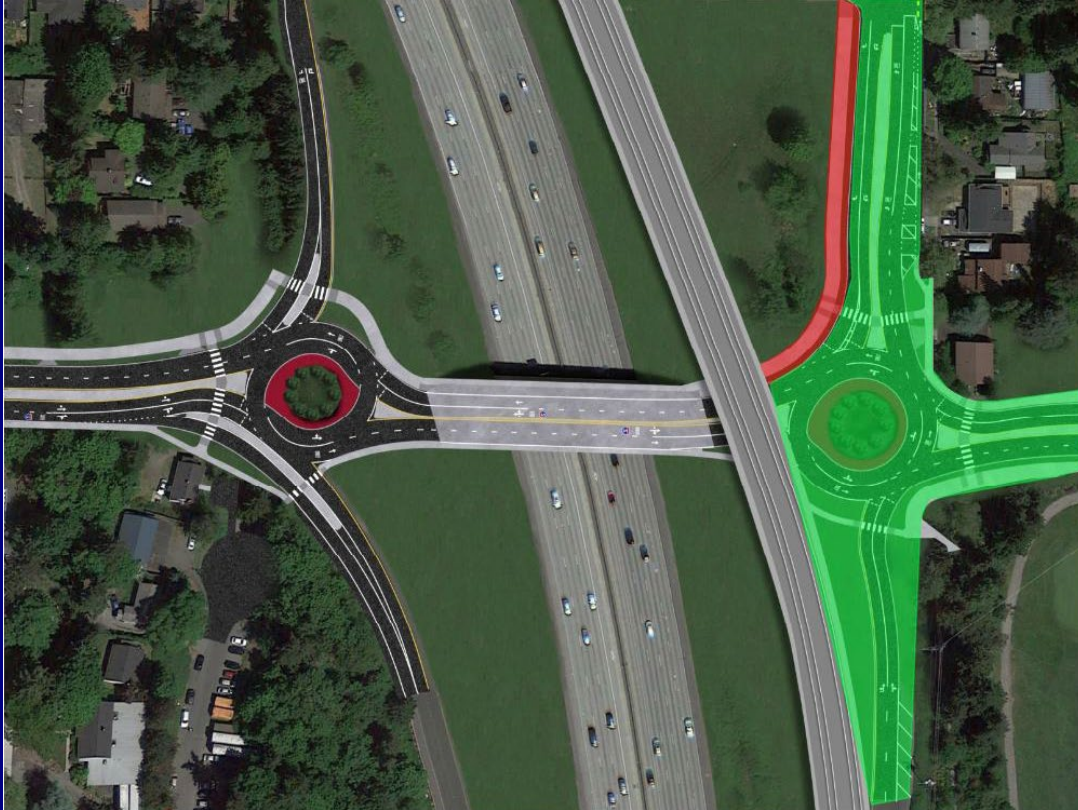
## Schedule & Milestones through 2024



# Interchange pedestrian/bike route



# Interchange early works



# Interchange utility coordination

- SPU
  - Relocate 24-inch diameter Water Transmission Main (north side of 145th St.)
  - Relocate Sanitary Sewer (south side of 145th St.)
- SCL
  - 5th Avenue ductbank
  - Remove power poles (north side of 145th St.)
  - Relocate 12.4 kV feeder line (south side of 145th St. west and east of I-5)
- Communications
  - Underground aerial communication lines (north side of 145th St.)
  - Relocate Lumen ductbank (south side of 145th St.)
- PSE relocate 6-inch gas main (middle of 145th St.)

# Solutions to minimize construction impacts

During construction:

- We will keep one lane open in each direction (reduced capacity)
- Interchange will remain open during construction



# PHASE 3

## LEGEND

- NEW SIDEWALK
- RECONSTRUCTION OF EXISTING SIDEWALK
- EXISTING SIDEWALK



Phase 3 will include the reconstruction of 100' of sidewalk on Park Avenue in park direction.

### PHASE 4 - RECONSTRUCTION OF 100' OF EXISTING SIDEWALK ON PARK AVENUE (JULY 2023 - SEPTEMBER 2023)

- 1. New sidewalk reconstruction project located along the length of the existing sidewalk.
- 2. Project will include the reconstruction of 100' of existing sidewalk on Park Avenue in park direction.
- 3. Existing sidewalk reconstruction will include the reconstruction of 100' of existing sidewalk on Park Avenue in park direction.
- 4. Project will include the reconstruction of 100' of existing sidewalk on Park Avenue in park direction.
- 5. Project will include the reconstruction of 100' of existing sidewalk on Park Avenue in park direction.
- 6. Project will include the reconstruction of 100' of existing sidewalk on Park Avenue in park direction.
- 7. Project will include the reconstruction of 100' of existing sidewalk on Park Avenue in park direction.
- 8. Project will include the reconstruction of 100' of existing sidewalk on Park Avenue in park direction.

| Item                                   | Quantity | Unit        |
|--|----------|-------------|
| 1. New sidewalk reconstruction         | 100      | Linear Feet |
| 2. Reconstruction of existing sidewalk | 100      | Linear Feet |
| 3. Existing sidewalk reconstruction    | 100      | Linear Feet |



# Other Project Updates





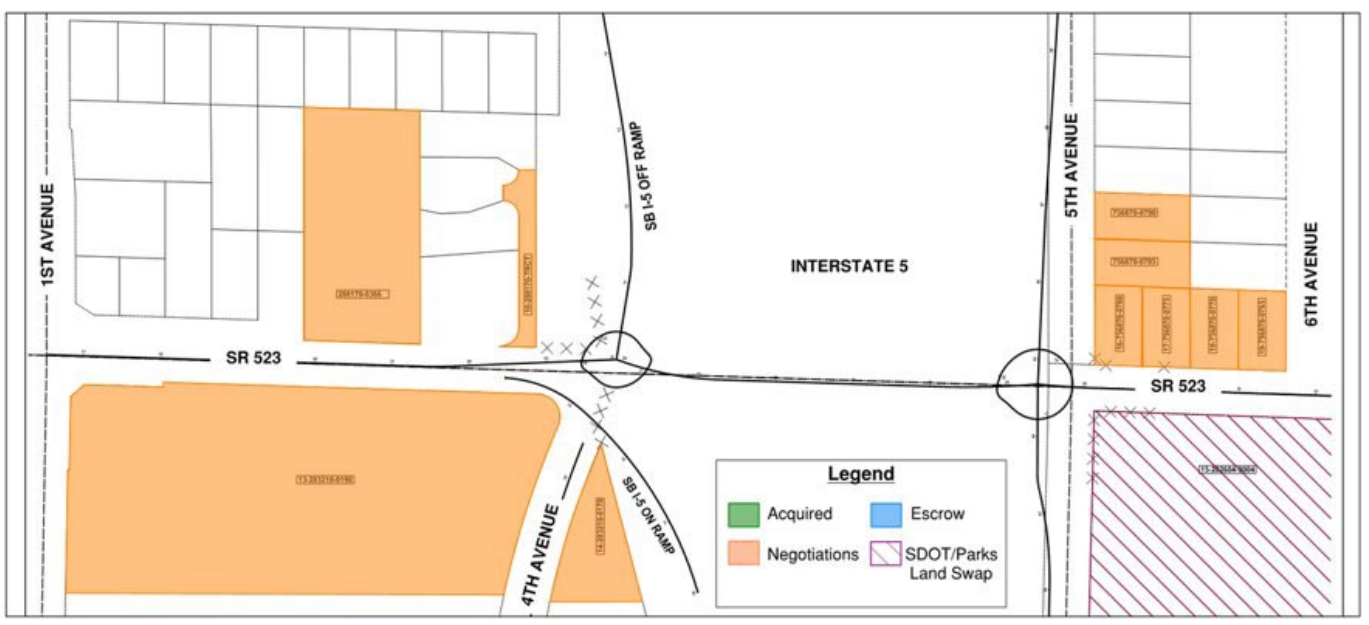
# 145th Corridor partial acquisitions



# 145th Corridor full acquisitions

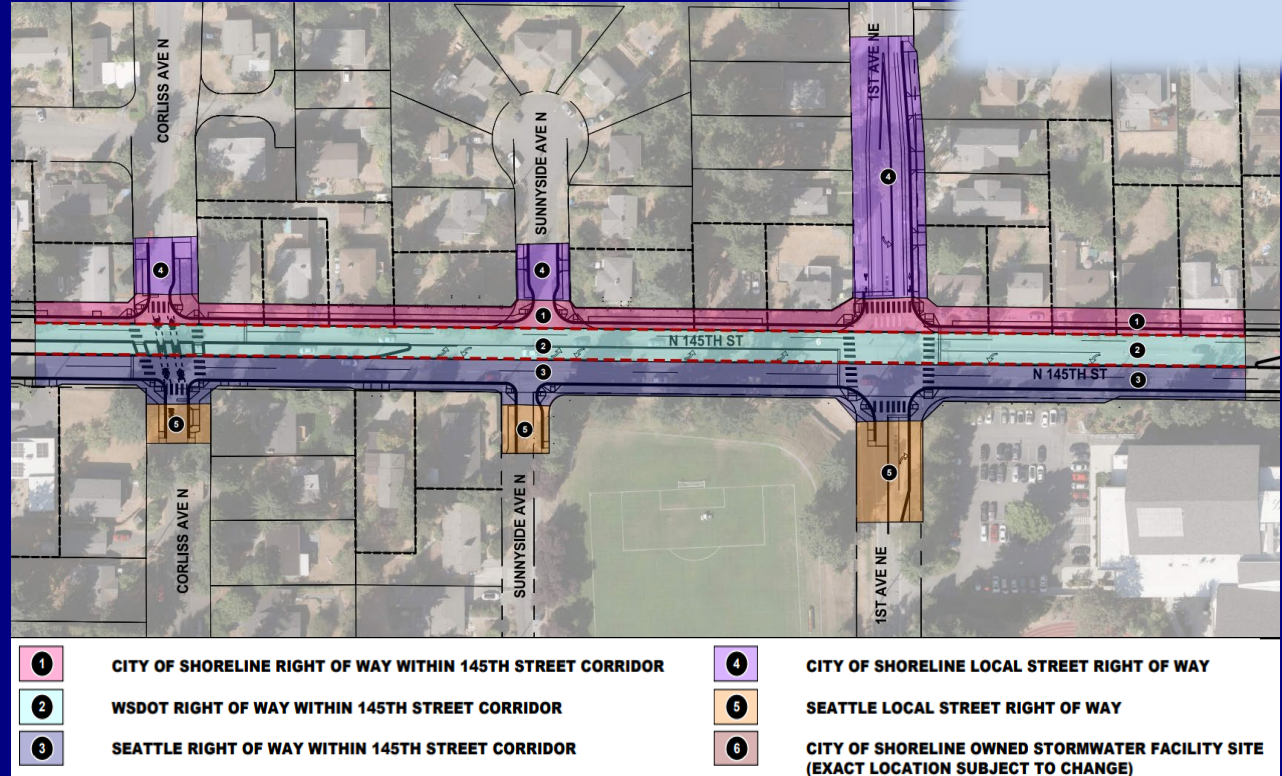


# 145th Interchange partial acquisitions



# Partnerships and agreements

Agreements required to address complexity of agency responsibilities



# Partnerships and agreements

## Agreements under development:

- WSDOT - Seattle - Shoreline Maintenance and Operations Agreement M&O (Corridor)
- WSDOT - Seattle - Shoreline M&O (Interchange)
- Seattle Right of Way Acquisition MOU
- SPU Water and Wastewater MOU

# Upcoming virtual open house

## 145th Multimodal Corridor & I-5 Interchange Improvements Virtual Open House

- June 1-15, 2022
- [www.shorelinewa.gov/145projects](http://www.shorelinewa.gov/145projects)
- Latest project updates
- Opportunity for public feedback





Questions?

