

Zoom Video  
is shown here

# Update on Lake City Partners and King County Regional Homeless Authority April 25, 2022



# Discussion Guests

Zoom Video  
is shown here

- Walt Washington, outgoing Executive Director - Lake City Partners
- Marc Dones, CEO – King County Regional Homelessness Authority
- Alexis Mercedes Rinck, Sub-Regional Planning Manager – King County Regional Homelessness Authority

# Background

Zoom Video  
is shown here

- 2015, Council Adopted Resolution 379
- Council Goal to site a shelter in North KC
- Siting of shelter began in 2020
- Creation of KCRHA

# Shoreline Programs

Zoom Video  
is shown here

- Severe Weather Shelter
  - 3<sup>rd</sup> season, activated 12 times, average 7 guests
- Homeless Outreach
- The Oaks Enhanced Shelter



# Regional Coordination

Zoom Video  
is shown here

- NE Funders
- North Urban Human Services Alliance
- North King County Shelter Task Force
- King County Regional Homelessness Authority



# Lake City Partners

Zoom Video  
is shown here

- The Oaks Enhanced Shelter
- 60person capacity
- Opened April 1, 2021
- Replaced the rotating overnight only winter shelter
- God's Lil' Acre Day Center



# The Oaks – Key Data

Zoom Video  
is shown here

- 34 Shoreline residents served
  - 26 exited the program in 2021
    - 7 to housing
    - 3 to treatment
    - 16 exited voluntarily or involuntary
  - 28 white, 6 persons of color
  - 16 male, 18 female



# The Oaks – Key Data

Zoom Video  
is shown here

- Calls to 911
  - April-December 2021  
19 calls, average of 2.11 calls/per month
  - 2018-2019 (as a nursing home)  
103 calls, average of 4.29 calls/per month



# Lake City Partners

Zoom Video  
is shown here

## Trends: What is Happening Now?

- Inside the Oaks: What's it like?
- Demographic: Referrals, new to the system
- Housing, Housing, Housing, Where and how?



# Lake City Partners

Zoom Video  
is shown here

## What is Happening Next?

- Community Based Case Management
- Diversion from shelter
- Health in program and beyond



# Lake City Partners

Zoom Video  
is shown here

## Challenges

- Service Lobby – Wait List: Can I get in?
- Housing Inventory: Where is it?
- Diversion Funds: We need more!



# Lake City Partners

Zoom Video  
is shown here

You Have Questions – Let's Talk





# KCRHA

King County Regional Homelessness Authority

An overview of who we are and what we do.



# BACKGROUND

2018- 2019

2020

2021

2022

2023

## **NIS Design & Inter-Local Agreement (ILA)**

National Innovation Service engaged in 2018 to evaluate the system. KCRHA established December 2019 by ILA between Seattle and King County.

## **Administrative Start-Up & Global Pandemic**

King County, Seattle, and Sound Cities set up governance structures for KCRHA; COVID-19 changed the landscape and responses to homelessness.

## **Hiring and Planning**

CEO Marc Dones started in April 2021, focused on start-up & hired executive team. Started sub-regional planning in late June. Integrated data analysis finds 40,000+ people experiencing homelessness.

## **Implementation and Redesign**

Transferring 268 contracts; Partnership for Zero & Systems Advocates; Severe weather planning; Qualitative research on unsheltered homelessness; Service redesign process.

## **Significant, Visible, Transformative Change**

# WHO WE ARE



**RHA**  
King County Regional  
Homelessness Authority

# THEORY OF CHANGE

## Our Theory of Change

*If we create a homeless response system that centers the voices of people with lived experience, then we will be able to meet needs and eliminate inequities, in order to end homelessness for all.*



# CORE VALUES

## **It Is Possible to End Homelessness**

Homelessness can happen to anyone, and housing is a basic human need that everyone should have access to. Our goal is to make sure that nobody has to live outside, and nobody has to live in a shelter long-term. We believe in a hopeful, inclusive future where everyone has a safe and stable place to live.

## **Racial Equity & Social Justice**

Homelessness disproportionately harms people of color. The Authority uses an equity based decision making framework to proactively dismantle structural racism and advance equity.

## **Centering Lived Experience**

The Authority is committed to centering the voices and insights of people who have lived experience of homelessness and housing instability.

## **Collaboration & Partnership**

Everything we do involves community.

# ROLE & SCOPE

The Interlocal Agreement (ILA) describes the role, scope, and purpose of the KCRHA:

- **Unified planning and coordination** of funding and services for people experiencing homelessness countywide.
- Oversight on **policy**, contract management, and performance management.
- **Continuum of Care** functions, as required by the U.S. Department of Housing and Urban Development to receive federal funding, formerly housed within "All Home."
- Creation of a new **Ombuds Office** to serve as a single point of contact to support system navigation and maintain accountability to people experiencing homelessness
- Establishment of **clear metrics and milestones** for measuring success and for ensuring accountability and transparency.

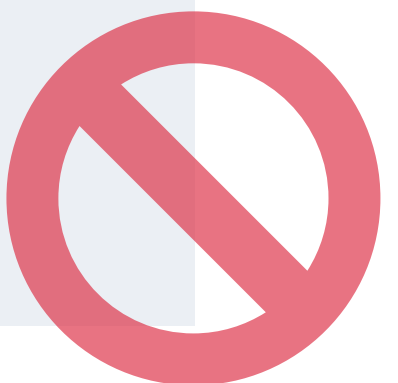


## WE ARE

- A special jurisdiction government agency.
- An agency that receives and administers public funding.
- An administrator of programs and policies.
- A partner with public and private organizations.

## WE ARE NOT

- The King County Department of Community and Human Services.
- The City of Seattle Human Services Department.
- A Public Development Association or Public Housing Authority.
- An agency that can levy taxes.



# GOVERNANCE

## GOVERNING COMMITTEE



The 11-member Governing Committee provides high-level guidance, approves the budget, and hires, fires, and reviews the performance of the CEO.

## IMPLEMENTATION BOARD



The 13-member Implementation Board provides goal-setting and oversight similar to a board of directors.

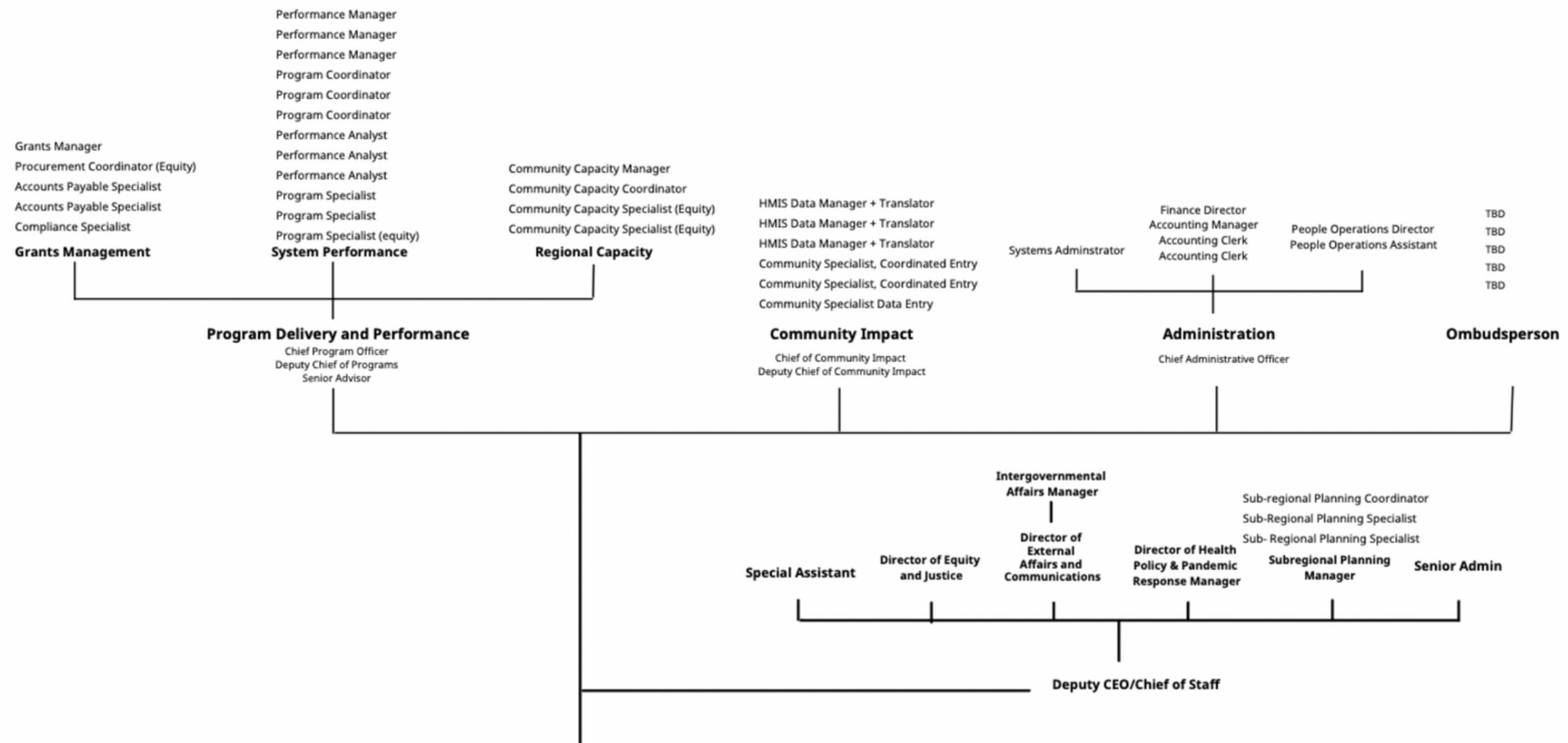
## ADVISORY COMMITTEE



The Advisory Committee is a group of representatives from providers and people with lived experience oversee who serve as the Continuum of Care oversight board.

# ORGANIZATION

## KCRHA Organizational Chart



CEO Marc Dones

# OUR STAFF

**62%**

of KCRHA  
Staff identify  
as non-white

**42%**

of KCRHA  
Staff identify  
as LGBTQ+

**50%**

of KCRHA Staff  
identify as having  
lived experience

# WHAT WE DO



**RHA**  
King County Regional  
Homelessness Authority



	City of Seattle	King County	RHA
INFRASTRUCTURE	Housing Capital and Development	✓	✗
	CoC Funded Programs	✗	✓
	Shelter		✓
PROGRAMS	Diversion	✗	✓
	Rapid Re-Housing	✗	✓
	Coordinated Entry	✗	✓
	HMIS	✗	✓
OTHER SERVICES	Outreach	✓	✓
	Encampment Cleans	✓	✗
	Behavioral Health and Crisis Response	✓	✗



# EQUITY-BASED DECISIONMAKING

- Lead with the people who are most impacted
- Identify existing inequities and power dynamics
- Act with transparency and accountability
- Proactively eliminate racial inequities and advance equity

# SUB-REGIONAL PLANNING

39

**Cities**

150+

**Organizations**

7

**Sub-Regions**

In collaboration with all 39 cities including Seattle and over 150 organizations, the RHA identified 7 sub-regions with distinct characteristics and needs.

We have engaged over 400 stakeholders regionally on a one-on-one basis, and attend over 20 coalition and regional tables to provide updates and receive feedback from partners like service providers, outreach workers, and city human services planners.

Cities and sub-regions have the option of signing an administrative service agreement with the RHA, in order to further unify and coordinate services across King County.

# North King County Planning

Regular Engagement with Regional Tables:

- North Urban Human Services Alliance
- North King County Coalition on Homelessness

# Understanding Unsheltered Homelessness Project

Interviewing individuals experiencing unsheltered homelessness around the region.

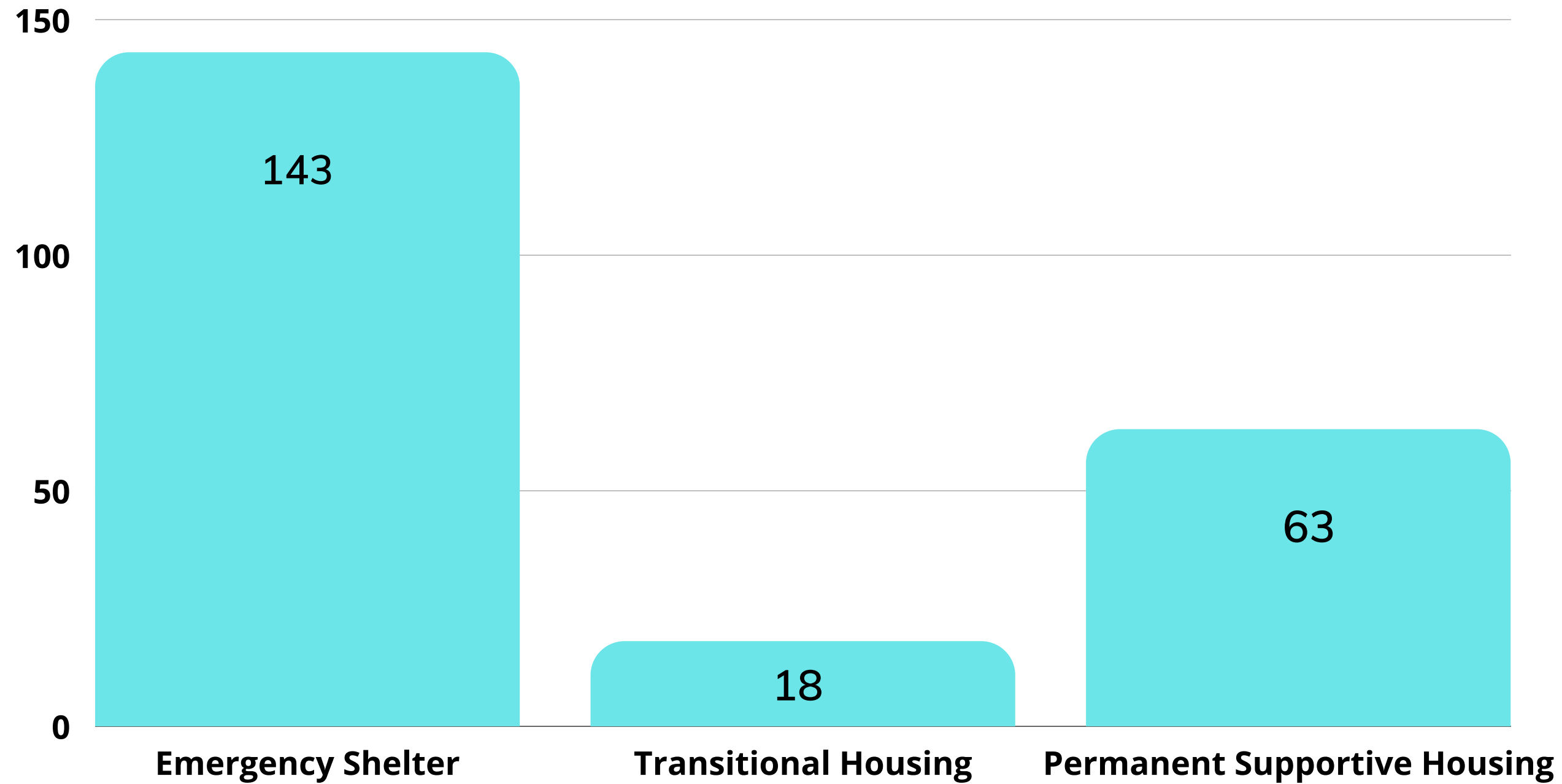
9 Interview Hubs set up around the region

2 Hubs serving the North King County sub-region

- Bothell Library
- Aurora Commons (North Seattle on Aurora Ave)

600+ People Reached

# Beds in North King County



# Homelessness Management Information Systems (HMIS) Data on North King County

HMIS is an administrative data system on individuals accessing homelessness services.

On a 3/10 data pull from HMIS:

- 410 people who reported their city of last residence as a North King County city
- 210 of them (51%) of people reported Shoreline as their last city of residence

# PROGRAMS

- Outreach to people experiencing homelessness
- Diversion and prevention of homelessness
- Emergency Shelter
- Rapid Re-Housing
- Coordinated Entry
- Services associated with Permanent Supportive Housing
- Strategic planning, system administration, data and performance measurement

# KEY BODIES OF WORK

- Partnership for Zero
- Sub-Regional Planning
- By-Name List
- Systems Advocates (Peer Navigation)
- Metrics & Redesign
- Cross-Sector Coordination



[www.KCRHA.org](http://www.KCRHA.org)  
Email: [info@kcrha.org](mailto:info@kcrha.org)  
Twitter: [@KC\\_RHA](https://twitter.com/KC_RHA)

