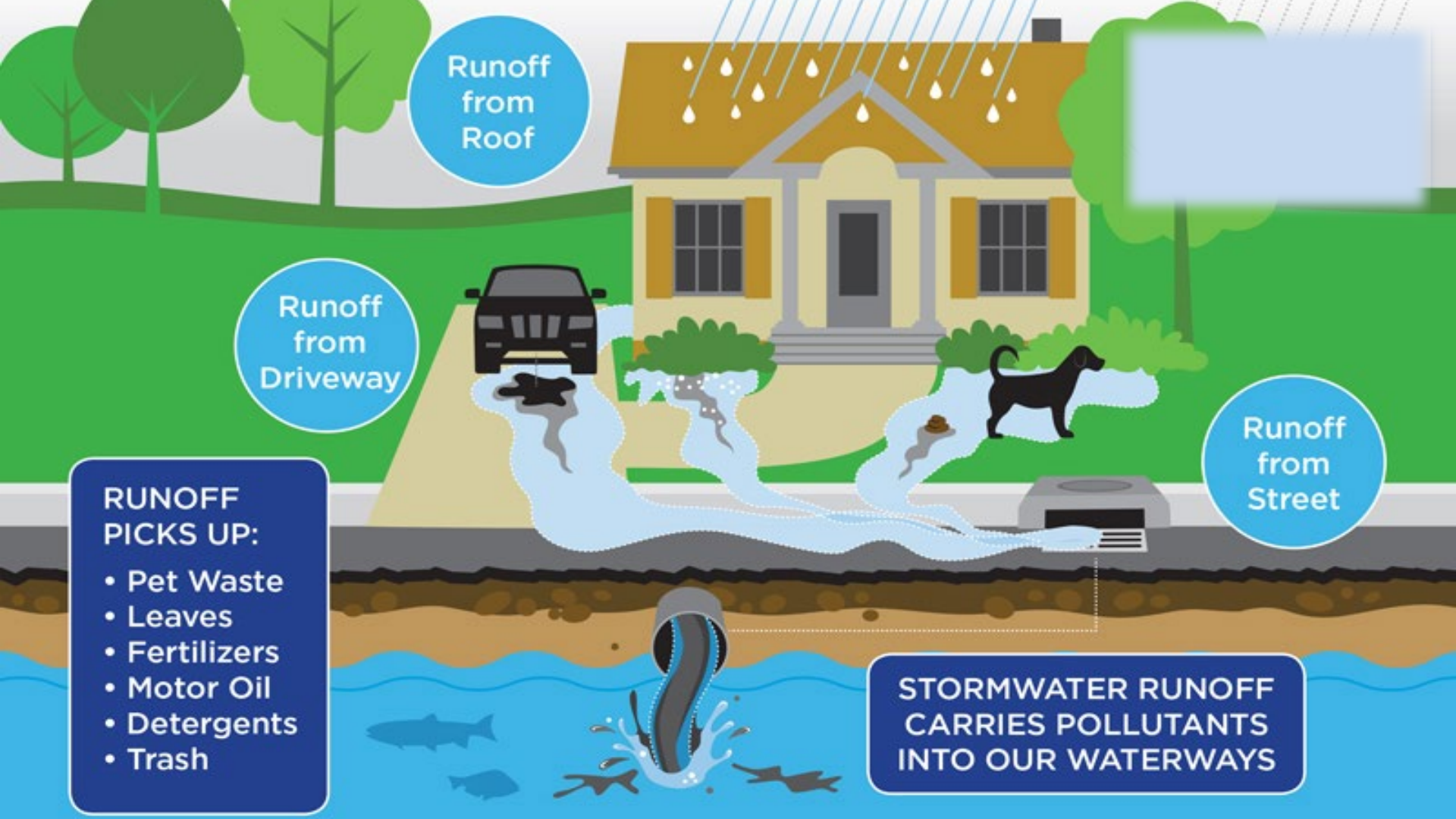


Discussing Ordinance No. 943 -  
Amending Shoreline Municipal Code  
Chapter 13.10 Surface Water Utility for a  
New Source Control Program

April 18<sup>th</sup>, 2022





Runoff  
from  
Roof

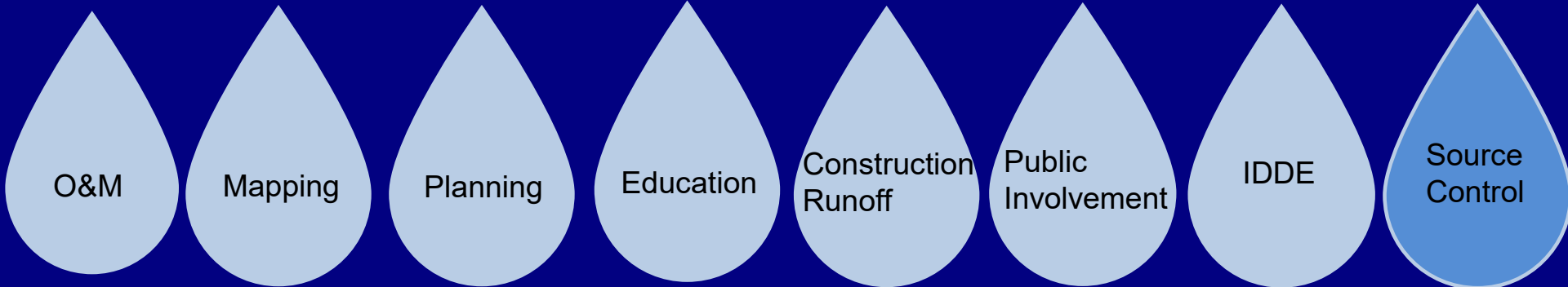
Runoff  
from  
Driveway

Runoff  
from  
Street

- RUNOFF PICKS UP:**
- Pet Waste
  - Leaves
  - Fertilizers
  - Motor Oil
  - Detergents
  - Trash

**STORMWATER RUNOFF  
CARRIES POLLUTANTS  
INTO OUR WATERWAYS**

# Western WA Phase II Municipal Stormwater Permit





# Source Control Program: Purpose & Overview



# Source Control Program: Focus on Outdoor Pollution



# Source Control Program: Pollution Prevention Practice Example



*Before: Without secondary containment, any oil spilled during adding/removing materials from the drums would spill to the ground, causing soil contamination.*



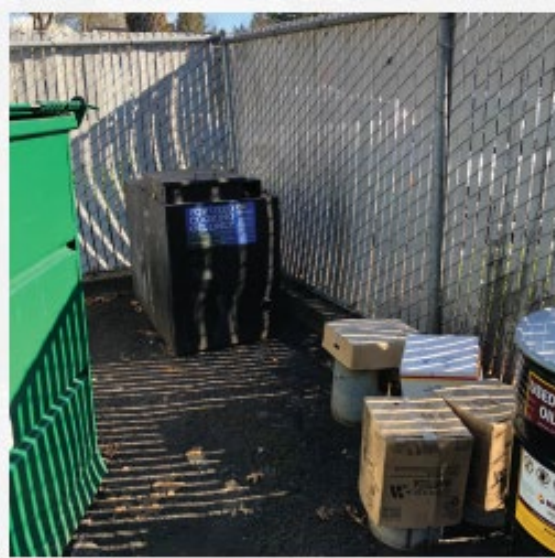
*After: With secondary containment, even if there is a spill or overflow, any spilled materials will be captured with the secondary containment pallet and can be properly managed.*



# Source Control Program: Pollution Prevention Practice Example



*Before: Fats, oils, and greases (F.O.G) being stored in open-top 5-gallon buckets. This type of storage increases the likelihood of spills to the environment. In this photo, you can see spilled F.O.G. next to the containers.*

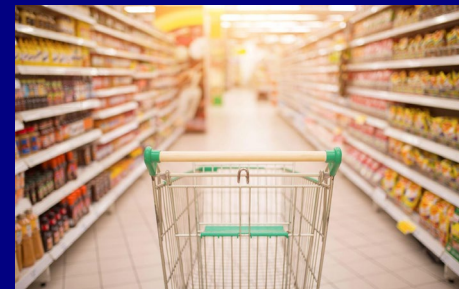


*After: The F.O.G. collection container has been cleaned up, and the spill next to the container has been cleaned up.*



*After: The F.O.G. is now being collected in larger containers with securely fastened lids, greatly reducing the chances of spills or improper management.*

# Source Control Program: Shoreline's Inventory





Site inspections use education and outreach as primary tool to help sites adopt appropriate pollution prevention practices

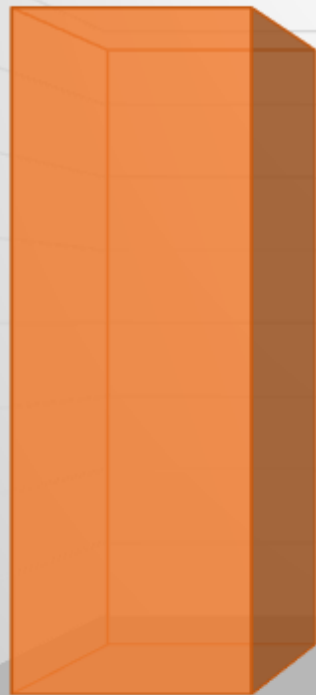


Permit requires that enforcement must be an available option for sites that refuse to comply

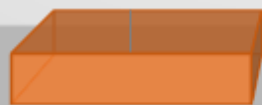
Jurisdictions with existing programs report ~1% of inspections result in enforcement annually



**7400**



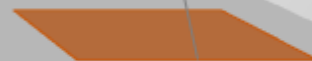
**550**



**110**



**1.1**



**BUSINESS LICENSES IN SHORELINE\***

**ESTIMATED NUMBER OF SITES FOR SOURCE CONTROL PROGRAM**

**ANNUAL NUMBER OF INSPECTIONS PER YEAR**

**ESTIMATED ENFORCEMENT CASES PER YEAR**



# Proposed Code Amendment

## Chapter 13.10 SURFACE WATER UTILITY

### Sections:

- 13.10.100 Purpose.
- 13.10.105 Definitions.
- 13.10.110 Utility created.
- 13.10.120 Revenue and expenditures.
- 13.10.200 Adoption of Stormwater Management Manual.
- 13.10.225 Minimum requirements.
- 13.10.230 Special drainage areas.
- 13.10.235 Construction inspections.
- 13.10.240 Record drawings and certifications.
- 13.10.245 Operation and maintenance.
- 13.10.320 Prohibited discharges.
- 13.10.330 General requirements.
- 13.10.340 Inspections and investigations and illicit discharges.
- 13.10.400 Violations.

Proposed revisions refine existing code to explicitly require the proactive implementation of BMPs and allow the Utility to conduct inspections.

# Enforcement Strategy

Enforcement follows SMC Chapter 20

Source Control Code Enforcement for only egregious cases of non-compliance

Approach is consistent with current enforcement approach for activities authorized under Chapter 13



# Financial Impact



- 2018 Surface Water Master Plan allocated \$86,780 per year for program development
- 2023-2024 program budget will be refined during upcoming biennial budget process
- 2024 Surface Water Master Plan to further evaluate long-term program needs





Council Goals Addressed:  
Stewardship of the Natural Environment







Pending Council Approval:

Proposed Ordinance scheduled for the Council  
Consent Agenda for Action on May 2<sup>nd</sup>, 2022







# Thank You



John Featherstone

[jfeatherstone@shorelinewa.gov](mailto:jfeatherstone@shorelinewa.gov)

(206) 801-2478