

From: [Tom McCormick](#)
To: [Keith Scully](#); [Betsy Robertson](#); [Chris Roberts](#); [Laura Mork](#); [Eben Pobe](#); [Doris McConnell](#); [John Ramsdell](#)
Cc: [Debbie Tarry](#); [John Norris](#); [Margaret King](#); [Julie Ainsworth-Taylor](#); [Rachael Markle](#); [Andrew Bauer](#); [Steve Szafran](#); [Pollie McCloskey](#)
Subject: [EXTERNAL] Land Use Map should identify all of Saltwater Park as "Public Open Space."
Date: Monday, April 11, 2022 12:53:03 PM
Attachments: [PastedGraphic-86.png](#)
[PastedGraphic-88.png](#)
[PastedGraphic-89.png](#)

CAUTION: This email originated from outside of the City of Shoreline. Do not click links or open attachments unless you recognize the sender and know the content is safe.

[Please enter this email into the record as a public comment for the City Council's meeting on April 11, 2022.]

Councilmembers,

Please add to the Comprehensive Plan docket an amendment to depict Saltwater Park on the Land Use Map as shown below, accurately identifying all of Saltwater Park as "Public Open Space."



Modifying the Land Use Map this way is consistent with current usage of Saltwater Park. Visitors regularly and in large numbers walk northerly along the beach from the park bridge to the residential bulkhead at the southern end of 27th Ave NW. The public walks this way not just during low tides, but with tides as high as 7.5 feet.

Modifying the Land Use Map this way is also consistent with the covenant that the City made to King County in the 1997 deed that conveyed to the City the property which is now Saltwater Park,

"The City covenants to operate and maintain the site in perpetuity as a public open space or as a public parks recreational facility" (underlining added for emphasis)

I am pleased that City staff, via its City-Initiated Potential Amendment #1 to the Final 2022 Comprehensive Plan Amendment Docket, has recommended fixing an obvious error in the Comprehensive Plan Land Use Map to depict as Public Open Space an uplands portion of Saltwater Park's 2-acre secondary Parcel 112603-9010. However, fixing an obvious error doesn't go far enough.

We need to amend the Land Use Map to depict all of Saltwater Park's beach as Public Open Space. There is no doubt that ALL of Saltwater Park is Public Open Space, so we need to depict ALL of Saltwater Park as Public Open Space. Note that the City owns no other beach property (no other tidelands) besides that at Saltwater Park, so correcting the Land Use Map as I recommend affects no other property other than the City's Saltwater Park property.

I just examined the tide charts for all of 2022. On 340 days this year, the beach is walkable from Saltwater Park's bridge to the residential bulkhead. On 340 days, there are times during daylight hours when the tide is lower than 7.5 feet. (I have walked the beach at tides up to 7.5 feet, most recently on Feb. 12, 2022, at 3:14 pm.)

The beach is walked virtually year-around (340 days), on days with 0.0 tides (see the first three marked images below), negative tides (the lowest being -4.5 feet during summertime), and on days with tides of 7.5 feet (see fourth image below). The beach needs to be designated as Public Open Space. We need to tell it like it is.

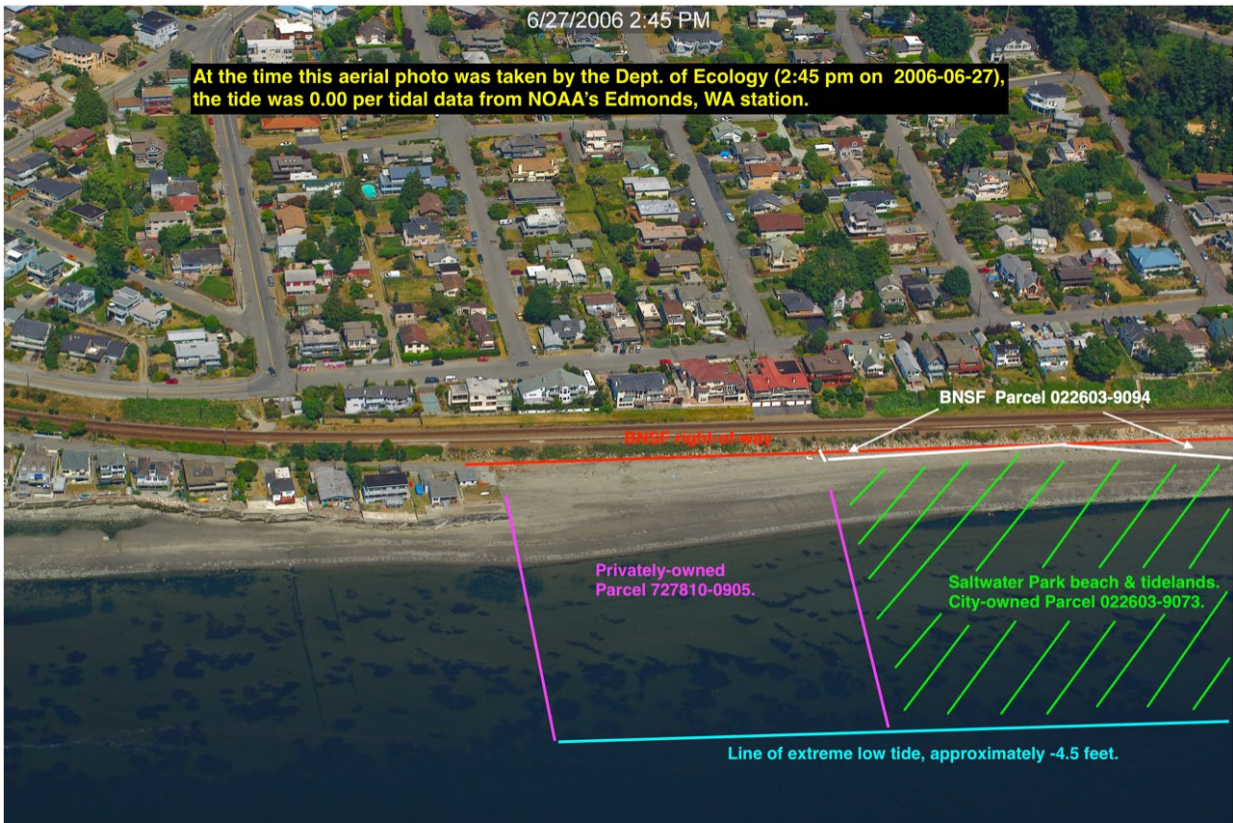
If for some unarticulated reason, City staff, after reading this email, remains uncomfortable with designating the beach on the Land Use Map as outlined above, then there might be an option B. City Council could amend the Land Use Map to add an additional Land Use Category called, "Public Open Space—Tidelands," and shade the area west of the Map's black-dotted line to denote such designation, using whatever color staff chooses.

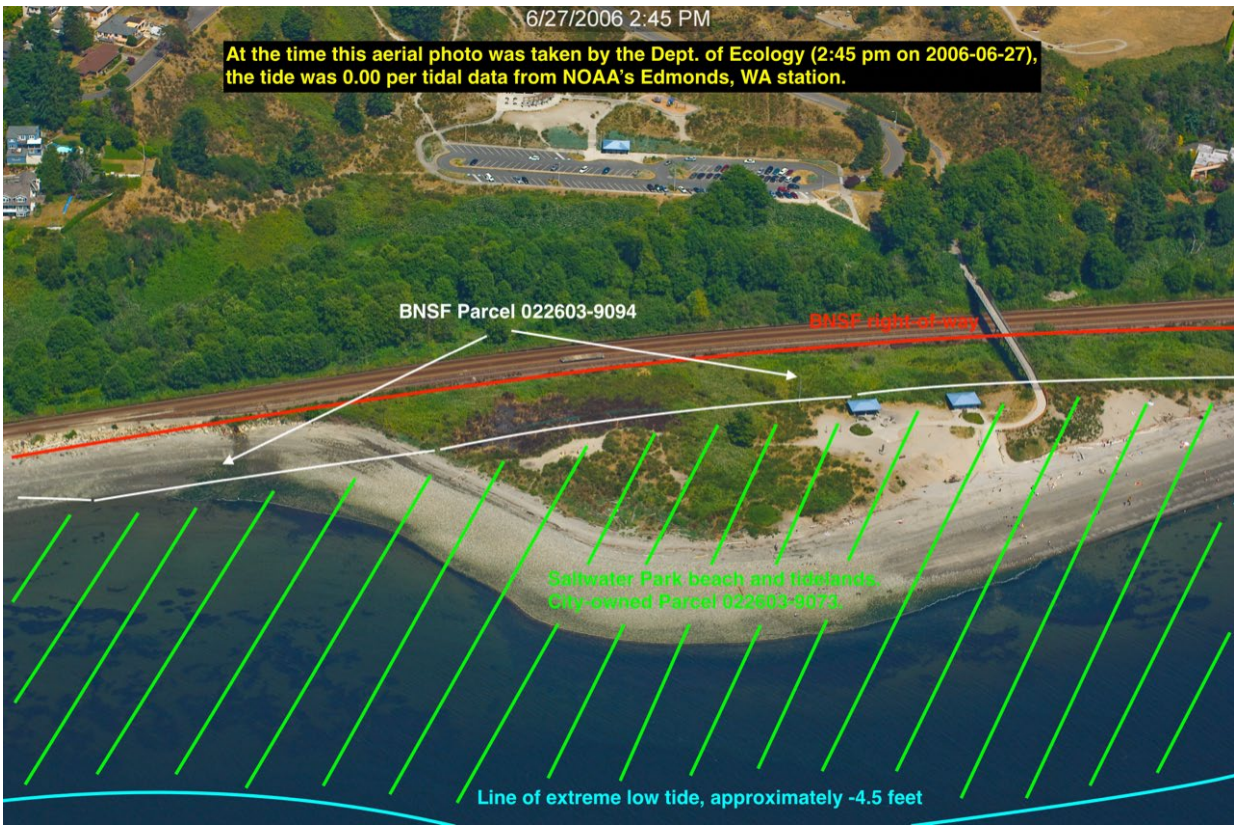
Councilmembers, please docket an amendment to the Land Use Map to designate and depict Saltwater Park's beach either as "Public Open Space" or "Public Open Space—Tidelands."

Thank you.

Tom McCormick

"Safe beach access for everyone, forever."





Tide was 7.5 feet when the below photo was taken at 3:14 pm February 12, 2022

