

145TH STREET & I-5 INTERCHANGE PROJECT

- HOME
- PROJECT OVERVIEW
- ROUNDBOUTS
- GIVE FEEDBACK
- NEXT STEPS

Online Open House: October 26–November 20, 2020

Welcome!

The interchange at 145th Street and I-5 greatly influences how traffic moves along 145th Street through Shoreline. With the arrival in 2024 of Sound Transit Link light rail and the new Shoreline South/145th Station for light rail and bus transit, Shoreline residents and regional travelers need safe, efficient ways to connect to these facilities and to an expanding pedestrian and bike network.

To address these needs, the City of Shoreline and WSDOT, in cooperation with Sound Transit, the Seattle Department of Transportation (SDOT), and King County Metro, plan to replace the signalized intersections on either side of I-5 with roundabouts and update lane configurations on the bridge over I-5. These improvements will address today’s and future transportation needs, reduce traffic congestion, and improve the safety and efficiency of the corridor for decades to come.

The purpose of this online open house is to provide a chance for you to:

- Learn about the current challenges at the 145th Street and I-5 interchange.
- Learn more about this project and how it addresses those challenges.
- Share what’s important to you and provide comment.

How to use this online open house

- To advance through this open house, scroll down to read each page, then click the “Next Page” button at the bottom of the page, or select the tab you want at the top.
- Within this online open house, you will be asked questions and can provide comments. The online open house and questionnaire will take only a few minutes to complete.

Thank you for your participation!

ONLINE PRESENTATION

The online presentation took place on Tuesday, November 10, 2020. Click [here](#) to view the presentation.

Stay Connected

Sign up for updates and engagement opportunities about this project and others in the N 145th Street Corridor.

First Name

Last Name

Email *

*Email is Required

SUBMIT

[GO TO NEXT PAGE](#)

TRANSLATION SERVICES:

If you would like to communicate with the City of Shoreline or review a document in another language, please send your request along with your contact information to clk@shorelinewa.gov or call 206-801-2700.

Si quisiera comunicarse con la ciudad de Shoreline o revisar un documento en otro idioma, envíe su solicitud junto con su información de contacto a clk@shorelinewa.gov o llame al 206-801-2700.

如果您想與 City of Shoreline 進行交流或檢視以另一種語言提供的文件，請將您的請求連同您的聯絡資訊發送到 clk@shorelinewa.gov 或請致電 206-801-2700。

쇼어라인 시에 연락하고 싶거나 다른 언어로 된 문서를 검토하려면 연락처 정보와 함께 요청서를 clk@shorelinewa.gov 로 제출하거나 206-801-2700번으로 전화해 주십시오.

Nếu quý vị muốn liên hệ với Thành phố Shoreline hoặc đọc tài liệu bằng ngôn ngữ khác, vui lòng gửi yêu cầu cùng với thông tin liên hệ tới địa chỉ clk@shorelinewa.gov hoặc gọi 206-801-2700.

Kung gusto mong makipag-usap sa Lungsod ng Shoreline o suriin ang isang dokumento sa ibang wika, pakipadala ang iyong kahilingan kasama ng iyong impormasyon sa pakikipag-ugnayan sa clk@shorelinewa.gov o tumawag sa 206-801-2700.

የሽርላይን ከተማ ጋር ለመገናኘት ከፈለጉ ወይም አንድን ሰነድ በሌላ ቋንቋ ለመከለስ ከፈለጉ ጥያቄዎን ከመገኛ መረጃዎ ጋር በማድረግ በ clk@shorelinewa.gov ላይ ኢሜይል ያድርጉ ወይም በ 206-801-2700 ላይ ስልክ ይደውሉ።

ምስ ከተማ ሽርላይን ከትዘራረቡ ወይ ድማ ሰነዳትኩም ብካልእ ቋንቋ ከተገምግሙ ምስ እትደልዩ፡ ጠለባትኩም ምስናይ ናይ መርከቢ ሓበሬታኹም ናብ clk@shorelinewa.gov ስደዱ ወይ ድማ ብጃጽረ 206-801-2700 ደውሉ።

CONTACT US:

Bob Earl, City of Shoreline Project Manager
bearl@shorelinewa.gov | 206-801-2479

For additional project information, visit shorelinewa.gov/145interchange

SHARE THIS WEBSITE:



FOLLOW US:



145TH STREET & I-5 INTERCHANGE PROJECT

- HOME
- PROJECT OVERVIEW
- ROUNDBABOUTS
- GIVE FEEDBACK
- NEXT STEPS

Online Open House: October 26–November 20, 2020

Project Overview

Background

In 2016, the City of Shoreline completed the 145th Street Multimodal Corridor Study and developed a preferred design concept for the corridor from 3rd Avenue NW to Bothell Way NE/Lake City Way (SR 522). Through an extensive public process and thorough technical analysis, the City tailored the planned improvements to maximize benefits while minimizing negative community impacts.

As a result of this study, Shoreline has received federal funding to complete design on two sections of the corridor: this interchange project and the portion of the 145th Street corridor from Aurora Avenue (SR 99) to I-5. Both projects are now being designed.

Additionally, the City of Shoreline has received federal funding for design of a **pedestrian/bicycle bridge** across I-5 at 148th Street that will connect directly to the new **Shoreline South/145th Station**. Sound Transit is also in the process of designing improvements to the 145th Street corridor from Lake City Way to the I-5 interchange to support bus rapid transit.



145th Street, looking east across the bridge over I-5

Design

In 2018 and 2019, in collaboration with WSDOT, Sound Transit, City of Seattle, and King County Metro, the City of Shoreline evaluated several alternative design concepts. Through this process, the City and our partners worked to identify a design that would increase safety and efficiency for all travel modes, including cars, freight, transit, pedestrians, and bicyclists. Working in collaboration with multiple stakeholders, the City conducted digital modeling of traffic flows and intersection performance, and even tested a full-scale mockup of the roundabout design using Metro buses.

Initially, the City and our partners considered widening the 145th Street bridge to accommodate people walking and biking, constructing a new northbound I-5 button-hook on-ramp, and installing new traffic lights at the intersections at 5th Avenue NE and the I-5 ramps on the west side of the freeway. However, our analysis showed that multi-lane roundabouts would offer a greater improvement in safety and roadway capacity. Compared to signalized intersections, roundabouts will:

- **Improve safety for drivers** by decreasing speeds and routing traffic in the same direction, reducing the severity of crashes.
- **Improve safety for pedestrians and bicyclists** by separating them from vehicle traffic at well-marked and lighted crosswalks and reducing crossing distances.
- **Promote continuous traffic flow**, reducing overall travel times and minimizing delays along the 145th Street corridor.
- **Eliminate the need for left-turn lanes on the bridge**, creating space for a two-way, 10-foot bike lane and a 5-foot sidewalk along the north side of the bridge.
- **Eliminate the need to widen the existing bridge**, substantially reducing construction costs.
- **Reduce lifecycle operating and maintenance costs** for the two intersections.

These improvements will address today's and future transportation needs and improve safety and access along the corridor for decades to come.



145th Street, looking west across the bridge over I-5

Elements of the Project

The existing bridge over I-5, which will connect the two roundabouts, will have ADA-accessible sidewalks on either side of it, allowing a seamless crossing for pedestrians. The pedestrian crossings will also include flashing beacons to increase safety. Bicyclists will use crosswalks to navigate the roundabouts and a two-way bike lane, separated from motorized traffic, to safely cross the bridge. The 148th Street Non-Motorized Bridge will support connectivity and safe access to the future Shoreline South/145th Station.



LEGEND:

- Sidewalks
- Rapid-flashing beacons
- Two-way bike lane
- Connection to Jackson Park Trail
- Sound Transit, Shoreline South/145th Station roadway improvements
- City of Shoreline, 145th Street, Aurora Ave N to 1-5 Improvements
- Sound Transit, Stride Bus Rapid Transit
- Seattle Department of Transportation, future traffic revisions and cycle track

Click on image to enlarge.

Interchange Fly Over

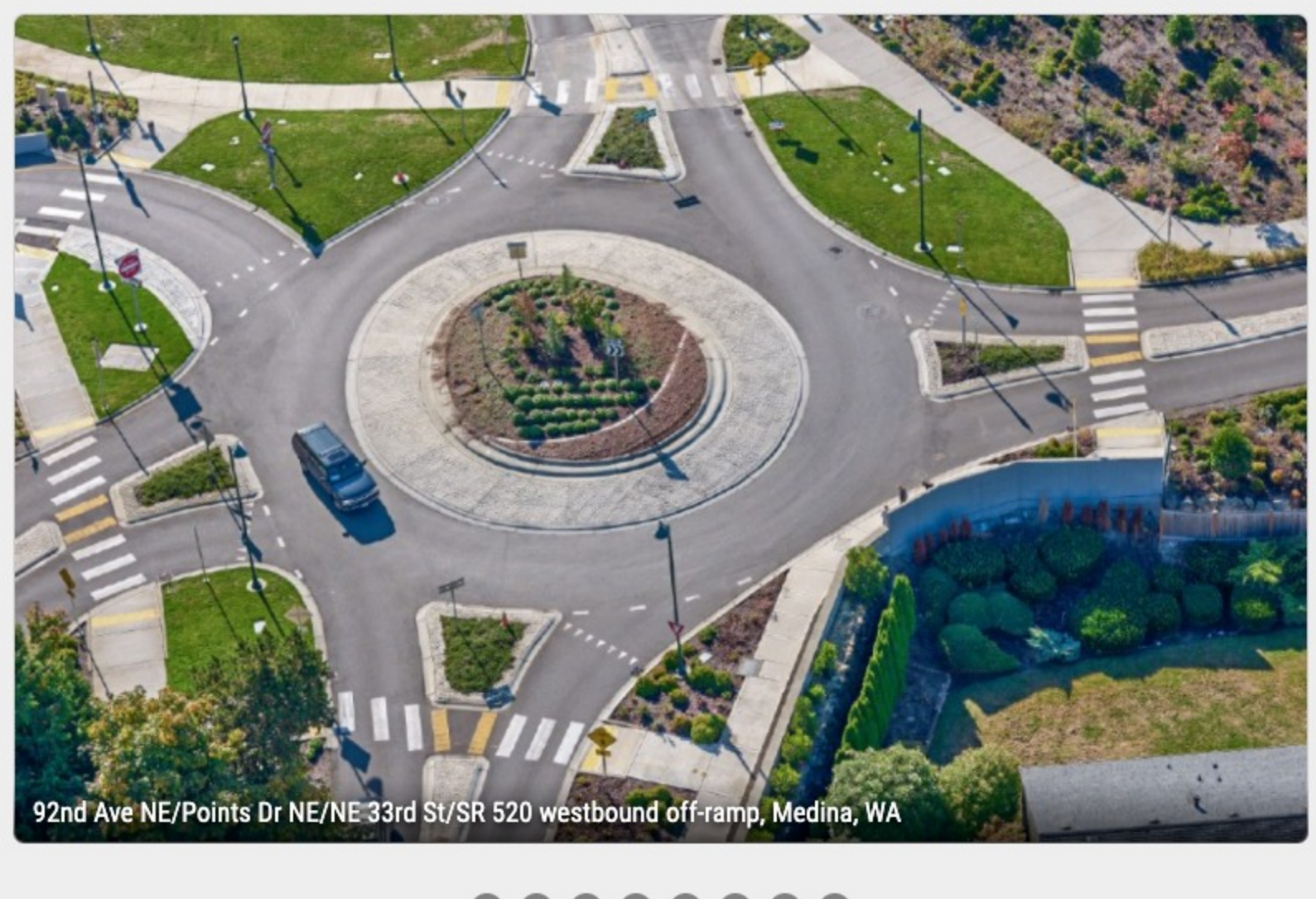
This video illustrates how all modes of travel will move through the roundabouts, including how drivers will travel through the roundabouts along with buses and trucks, and the routes pedestrians and bicyclists will use. The traffic shown in the video reflects the actual, projected traffic volumes at peak commuting hours, and how that volume of traffic will move through the proposed roundabouts.

The visualizations presented in the video are conceptual only and do not represent all elements of the final design of the interchange improvements.



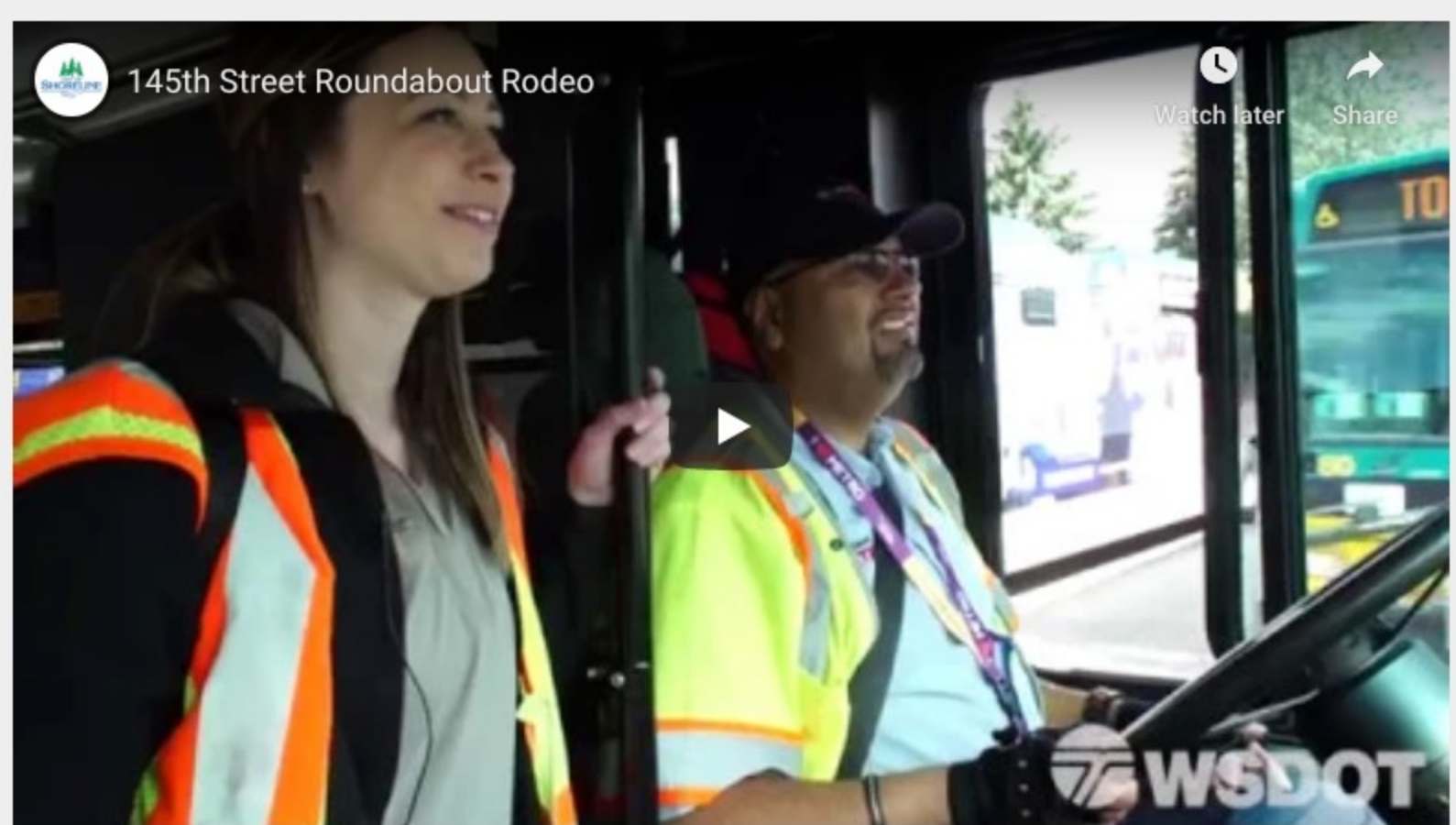
Roundabouts Around Washington

Roundabouts are connected to many interstate on- and off-ramps in Washington. The 145th Street Interchange roundabouts will be multi-lane and similar in appearance to the examples shown in this slideshow.



Roundabout Rodeo

To ensure that buses will be able to safely navigate the roundabouts, the WSDOT Regional Transit Coordination Division assisted King County Metro in organizing a "Roundabout Rodeo" with Seattle Department of Transportation (SDOT) and the City of Shoreline. This exercise is a proven method for testing the functionality of a proposed roundabout design. The design was laid out on the ground using paint and traffic cones. Metro operators were able to successfully drive in, around, and out of the roundabouts. This video captures the event in action.



← GO TO PREVIOUS PAGE

GO TO NEXT PAGE →

CONTACT US:

Bob Earl, City of Shoreline Project Manager
bearl@shorelinewa.gov | 206-801-2479

For additional project information, visit shorelinewa.gov/145Interchange

SHARE THIS WEBSITE:



FOLLOW US:



Roundabouts Around Washington

Roundabouts are connected to many interstate on- and off-ramps in Washington. The 145th Street Interchange roundabouts will be multi-lane and similar in appearance to the examples shown in this slideshow.



Roundabouts Around Washington

Roundabouts are connected to many interstate on- and off-ramps in Washington. The 145th Street Interchange roundabouts will be multi-lane and similar in appearance to the examples shown in this slideshow.



W Lake Sammamish Pkwy SE/I-90 westbound ramps, Bellevue, WA



Roundabouts Around Washington

Roundabouts are connected to many interstate on- and off-ramps in Washington. The 145th Street Interchange roundabouts will be multi-lane and similar in appearance to the examples shown in this slideshow.



Roundabouts Around Washington

Roundabouts are connected to many interstate on- and off-ramps in Washington. The 145th Street Interchange roundabouts will be multi-lane and similar in appearance to the examples shown in this slideshow.



Roundabouts Around Washington

Roundabouts are connected to many interstate on- and off-ramps in Washington. The 145th Street Interchange roundabouts will be multi-lane and similar in appearance to the examples shown in this slideshow.



E Valley Mall Blvd/I-82 ramps, Union Gap, WA



Roundabouts Around Washington

Roundabouts are connected to many interstate on- and off-ramps in Washington. The 145th Street Interchange roundabouts will be multi-lane and similar in appearance to the examples shown in this slideshow.



E Valley Mall Blvd/I-82 ramps, Union Gap, WA



Roundabouts Around Washington

Roundabouts are connected to many interstate on- and off-ramps in Washington. The 145th Street Interchange roundabouts will be multi-lane and similar in appearance to the examples shown in this slideshow.



SR 202/I-90 eastbound ramps, North Bend, WA



145TH STREET & I-5 INTERCHANGE PROJECT

HOME

PROJECT OVERVIEW

ROUNDABOUTS

GIVE FEEDBACK

NEXT STEPS

Online Open House: October 26–November 20, 2020

Roundabouts

Benefits of Roundabouts

The City of Shoreline’s redesign of the 145th Street and I-5 interchange is based on data that shows the benefits of roundabouts for safety, traffic flow, efficiency, and cost. According to [WSDOT traffic studies](#), roundabout intersections can provide lasting benefits in many ways, including:

– **Roundabouts reduce the rate and severity of collisions.**

Roundabouts reduce the likelihood of collisions by 37%, injury crashes by 75%, fatality collisions by 90%, and pedestrian–car collisions by 40%. Roundabouts also significantly reduce the likelihood of T-bone and head-on collisions.

– **Roundabouts calm traffic.**

Roundabout speeds are usually about 20 mph. Drivers must slow down and yield before entering the roundabout and they are less likely to feel the need to speed up to try to “beat the light.”

– **Roundabouts are more efficient.**

Roundabouts improve traffic flow and reduce waiting time. They facilitate a continuous flow of traffic and can accommodate higher traffic volumes with fewer lanes on the approaching streets.

– **Roundabouts are cost-effective.**

Long-term costs for roundabouts are lower because traffic signal maintenance and electrical costs are not needed. Roundabouts are also more effective during power outages. The cost of building a roundabout is comparable to that of a signal-controlled intersection.

– **Roundabouts accommodate all sizes of vehicles.**

Large trucks, buses, and oversize vehicles can straddle both lanes when driving in a roundabout. Most roundabouts have a truck apron, a raised section of pavement near the center of the roundabout that gives large vehicles extra room to navigate the roundabout.

– **Roundabouts are safer for pedestrians and bicyclists.**

Crosswalks are set back from the intersection, allowing drivers more time to react to pedestrians. Roundabout islands also provide refuge for crossing pedestrians and bicyclists.

Click on the “+” symbols for more information.

For more information, please visit the City of Shoreline’s [Roundabouts](#) webpage.

< GO TO PREVIOUS PAGE

> GO TO NEXT PAGE

How to Navigate Multilane Roundabouts

- Check the signs to choose the correct lane for your destination
- Yield to traffic already in the roundabout (all lanes)
- Stay in your lane through the roundabout
- Give buses and large vehicles space when approaching and traveling through the roundabout, as they may take more than one lane
- Yield to people in crosswalks

CONTACT US:

Bob Earl, City of Shoreline Project Manager
bearl@shorelinewa.gov | 206-801-2479

For additional project information, visit shorelinewa.gov/145interchange

SHARE THIS WEBSITE:



FOLLOW US:



145TH STREET & I-5 INTERCHANGE PROJECT

HOME

PROJECT OVERVIEW

ROUNDBOUTS

GIVE FEEDBACK

NEXT STEPS

Online Open House: October 26–November 20, 2020

Give Feedback

What is your ZIP code?

- 98103
- 98125
- 98133
- 98155
- 98160
- 98177
- Other *WRITE IN:*

Is there anything you would like to share about the 145th Street & I-5 Interchange Project? *WRITE IN:*

If you'd like us to email a copy of the online open house summary to you, please leave your email here:

SUBMIT

Demographic questions

Please tell us a little bit more about yourself so that we can understand how inclusive our community outreach has been.

Community Outreach Survey (Optional)

<http://www.shorelinewa.gov/our-city/diversity-inclusion/community-outreach-survey>

የማህበረሰብ ተደራሽነት የዳሰሳ ጥናት (ከተፈለገ)

<http://www.shorelinewa.gov/our-city/diversity-inclusion/community-outreach-survey-amharic>

社區外展服務調查 (可選)

<http://www.shorelinewa.gov/our-city/diversity-inclusion/community-outreach-survey-chinese-traditional>

커뮤니티 소통 설문 조사(선택 사항)

<http://www.shorelinewa.gov/our-city/diversity-inclusion/community-outreach-survey-korean>

Encuesta de divulgación comunitaria (opcional)

<http://www.shorelinewa.gov/our-city/diversity-inclusion/community-outreach-survey-spanish>

Survey sa Paglilingkod sa Komunidad (Opsiyonal)

<http://www.shorelinewa.gov/our-city/diversity-inclusion/community-outreach-survey-tagalog>

ጎዥያዳ ኮማዊ ግምገማ(ብምርጫ)

<http://www.shorelinewa.gov/our-city/diversity-inclusion/community-outreach-survey-tigrigna>

Khảo Sát Tiếp Cận Cộng Đồng (Không bắt buộc)

<http://www.shorelinewa.gov/our-city/diversity-inclusion/community-outreach-survey-vietnamese>

< GO TO PREVIOUS PAGE

> GO TO NEXT PAGE

CONTACT US:

Bob Earl, City of Shoreline Project Manager
bearl@shorelinewa.gov | 206-801-2479

For additional project information, visit shorelinewa.gov/145interchange

SHARE THIS WEBSITE:



FOLLOW US:



145TH STREET & I-5 INTERCHANGE PROJECT

HOME

PROJECT OVERVIEW

ROUNDBABOUTS

GIVE FEEDBACK

NEXT STEPS

Online Open House: October 26–November 20, 2020

Next Steps

The City plans to complete 30% design by early 2021. The project will then be handed off to WSDOT, who will complete environmental documentation, design, and construction. Throughout the remainder of the project, the City will remain directly involved as a major stakeholder.

How to Stay Involved

Please visit the [project webpage](#) to stay up to date with the latest project information.

You can also sign up for updates about this project and others in the N 145th Street Corridor by submitting your email on the [Home](#) page of this online open house.

Schedule



Funding

The project is not fully funded at this time but is anticipated to be funded through design and construction by the end of the year. The design and environmental phase is estimated to cost \$4.5 million, with \$3.89 million in funding coming from a federal grant. Overall costs to complete the project are currently estimated at \$25 million. The City continues to seek grants and work with partners to fully fund the project.

The Interchange is a Destination 2024 Project

The 145th Street & I-5 Interchange Project is one of eight Destination 2024 projects led by the City of Shoreline.

In preparation for two new Sound Transit Link light rail stations in Shoreline, the City has been planning for changes that will come with these new facilities. The City Council has increased zoning densities around the two future stations (Shoreline South/145th and Shoreline North/185th) so that new housing and development can be focused around transit. To support future development, the City is also planning for additional transportation improvements to help get people to light rail and around the station areas.

To learn more about the other projects listed below, visit the [Destination 2024 website](#) and check out our new interactive map.

- 145th Corridor Project (1-5 to Aurora)
- N 148th Non-Motorized Bridge
- 1st Avenue NE Sidewalks (145th to 155th Streets)
- 5th Avenue Rechannelization
- Off-Corridor Bike Network
- SR 522/523 BRT Project (Bothell/Lake City Way and 145th Street Bus Rapid Transit)
- Trail Along the Rail

< GO TO PREVIOUS PAGE

CONTACT US:

Bob Earl, City of Shoreline Project Manager
bearl@shorelinewa.gov | 206-801-2479

For additional project information, visit shorelinewa.gov/145interchange

SHARE THIS WEBSITE:



FOLLOW US:

