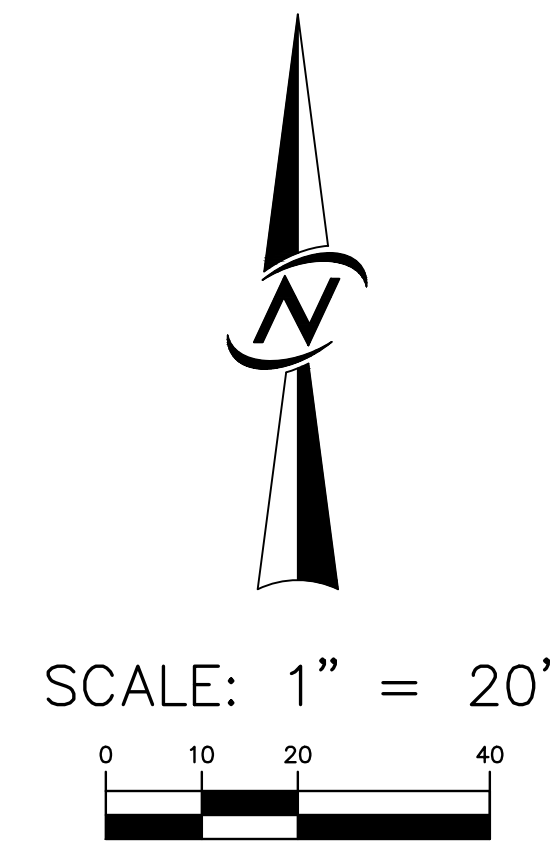
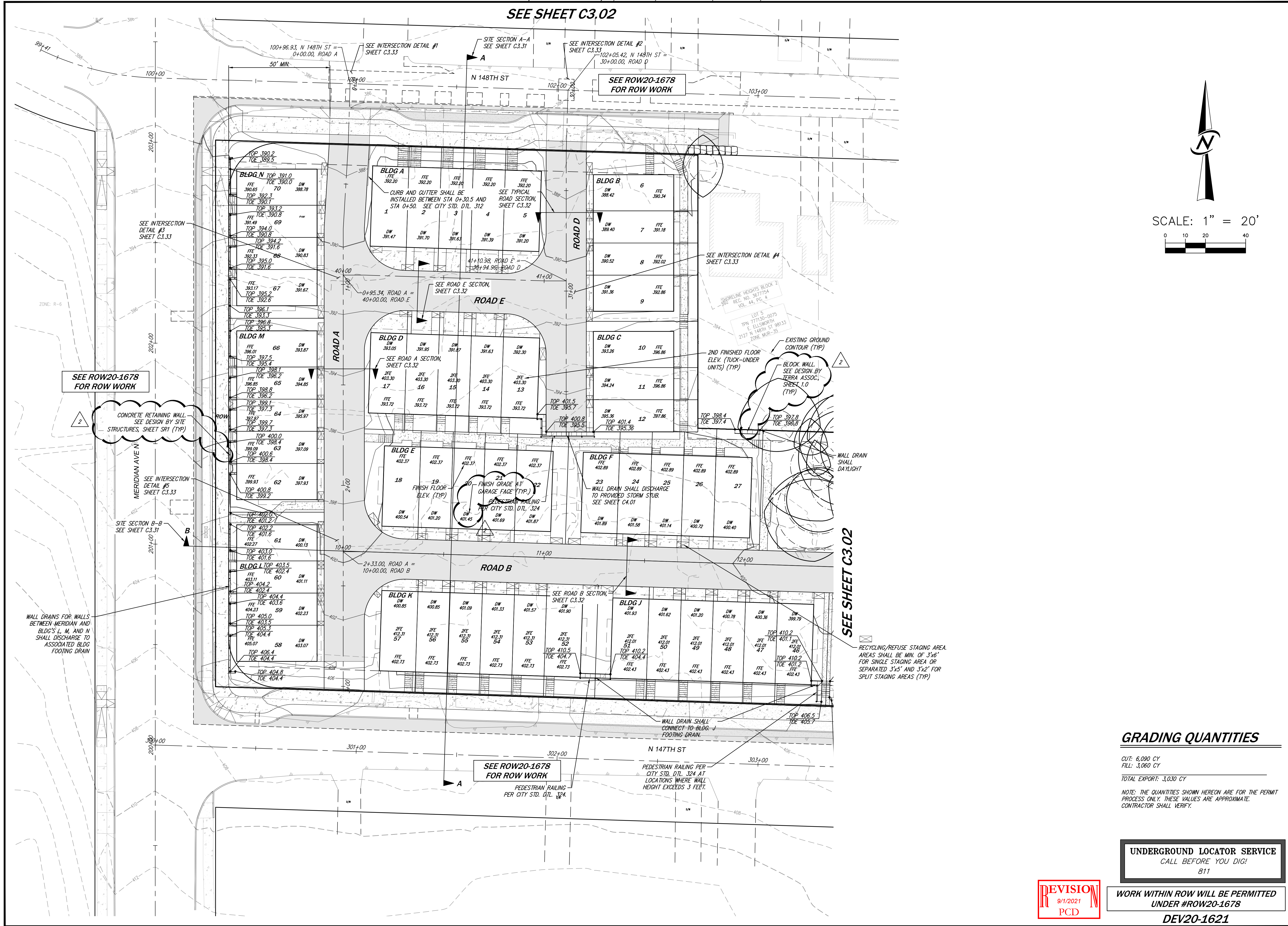


SEE SHEET C3.02



DATE	REVISIONS
4/21/21	REVISED PER CITY COMMENTS
9/27/21	REVISED PER CITY COMMENTS

CIVIL ENGINEERING  
LANDSCAPE ARCHITECTURE  
PLANNING  
SURVEYING

**CORE**  
DESIGN

12100 NE 19th St, Suite 300, Bothell, Washington 98011, 425.865.7877

**ROAD & GRADING PLAN  
5 DEGREES**

**PULTE HOMES OF WASHINGTON, INC.**  
3535 FACIOLIA BLVD SE, #600  
BELLEVUE, WA 98006

**GRADING QUANTITIES**

CUT: 6,090 CY  
FILL: 3,060 CY  
TOTAL EXPORT: 3,030 CY

NOTE: THE QUANTITIES SHOWN HEREON ARE FOR THE PERMIT PROCESS ONLY. THESE VALUES ARE APPROXIMATE. CONTRACTOR SHALL VERIFY.

**UNDERGROUND LOCATOR SERVICE**  
CALL BEFORE YOU DIG!  
811

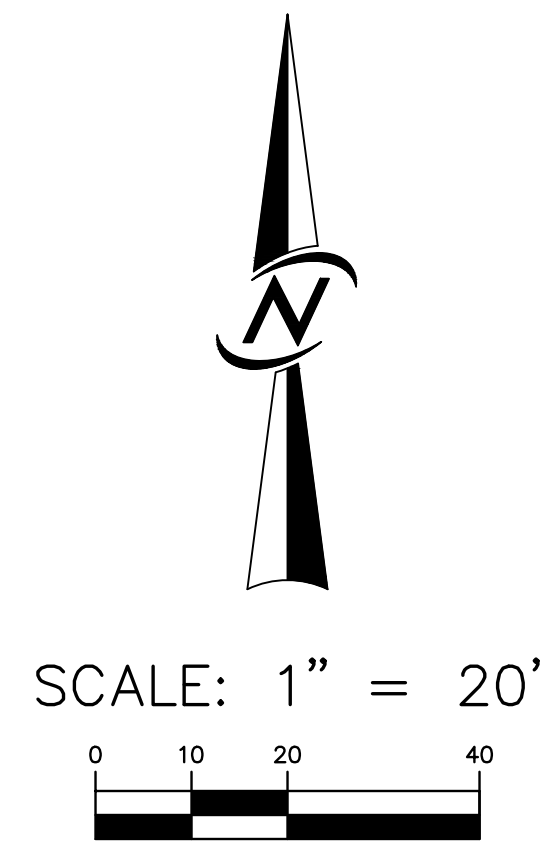
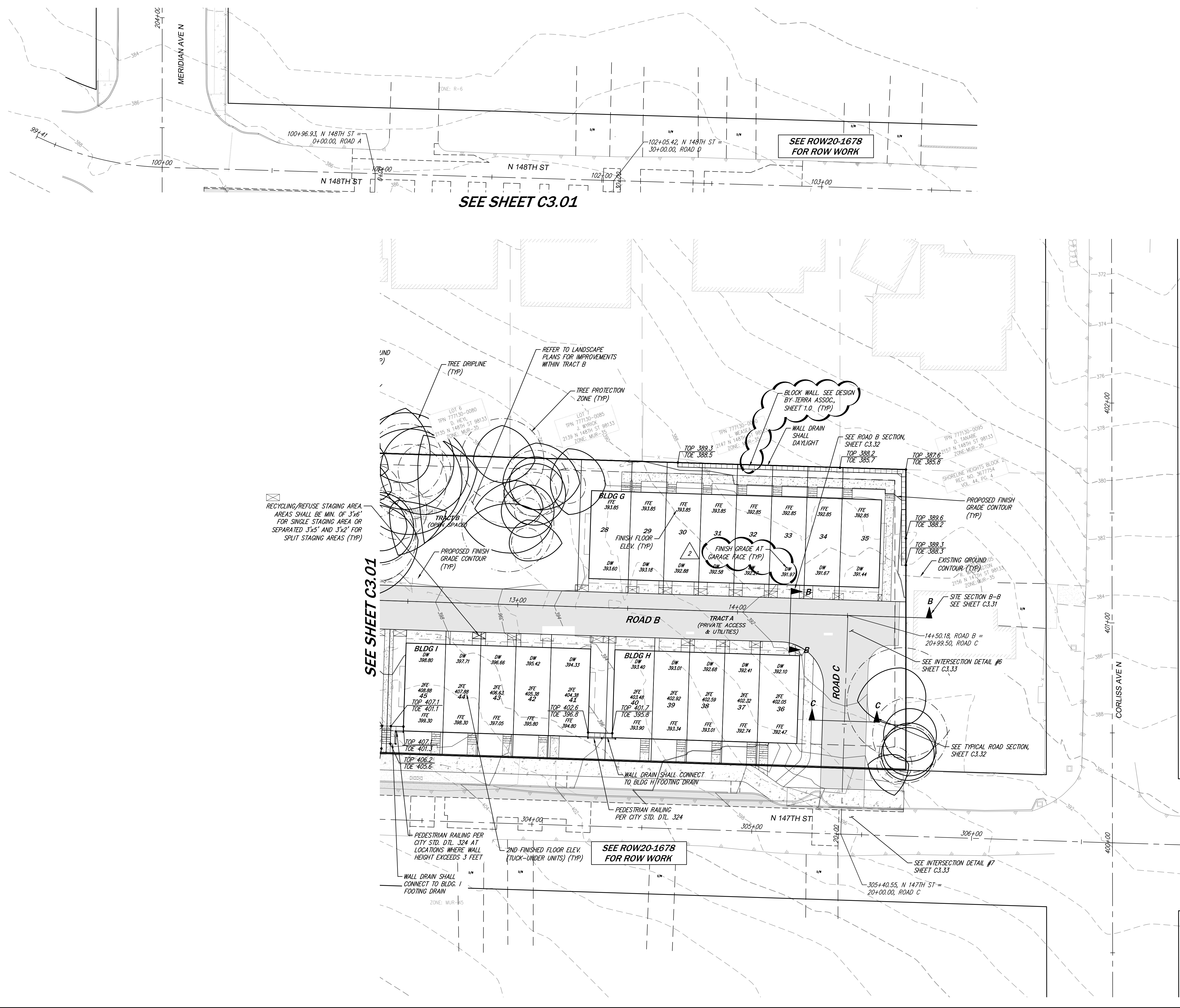
**WORK WITHIN ROW WILL BE PERMITTED  
UNDER #ROW20-1678**

**DEV20-1621**

**REVISION**  
9/1/2021  
PCD

DATE	SEE STAMP DATE	DESIGNED	DRAWN	APPROVED	PROJECT MANAGER
		GINA R. BROOKS, P.E.	MARY MOORE	GINA R. BROOKS, P.E.	GINA R. BROOKS, P.E.

SHEET  
**C3.01**  
PROJECT NUMBER  
**19133**



SEE SHEET C3.01

SEE SHEET C3.01

SEE ROW20-1678 FOR ROW WORK

SEE ROW20-1678 FOR ROW WORK

**REVISION**  
9/1/2021  
PCD

**UNDERGROUND LOCATOR SERVICE**  
CALL BEFORE YOU DIG!  
811

**WORK WITHIN ROW WILL BE PERMITTED UNDER #ROW20-1678**  
**DEV20-1621**

DATE	REVISIONS
4/21/21	REVISED PER CITY COMMENTS
9/27/21	REVISED PER CITY COMMENTS

CIVIL ENGINEERING  
LANDSCAPE ARCHITECTURE  
PLANNING  
SURVEYING

**CORE**  
DESIGN

12100 NE 195th St, Suite 300, Bothell, Washington 98011 425.865.7877

**ROAD & GRADING PLAN**  
**5 DEGREES**  
**PULTE HOMES OF WASHINGTON, INC.**  
3535 FACIOLIA BLVD SE, #600  
BELLEVUE, WA 98006

DATE	SEE STAMP DATE
DESIGNED	GINA R. BROOKS, P.E.
DRAWN	MARY MOORE
APPROVED	GINA R. BROOKS, P.E.
	GINA R. BROOKS, P.E.
	PROJECT MANAGER

SHEET	PROJECT NUMBER
<b>C3.02</b>	<b>19133</b>

8/26/2021 10:36 AM J:\2019\19133\ENGINEERING\FINAL SHEETS\SITE DEVELOPMENT PLANS\19133\_C3.01.DWG