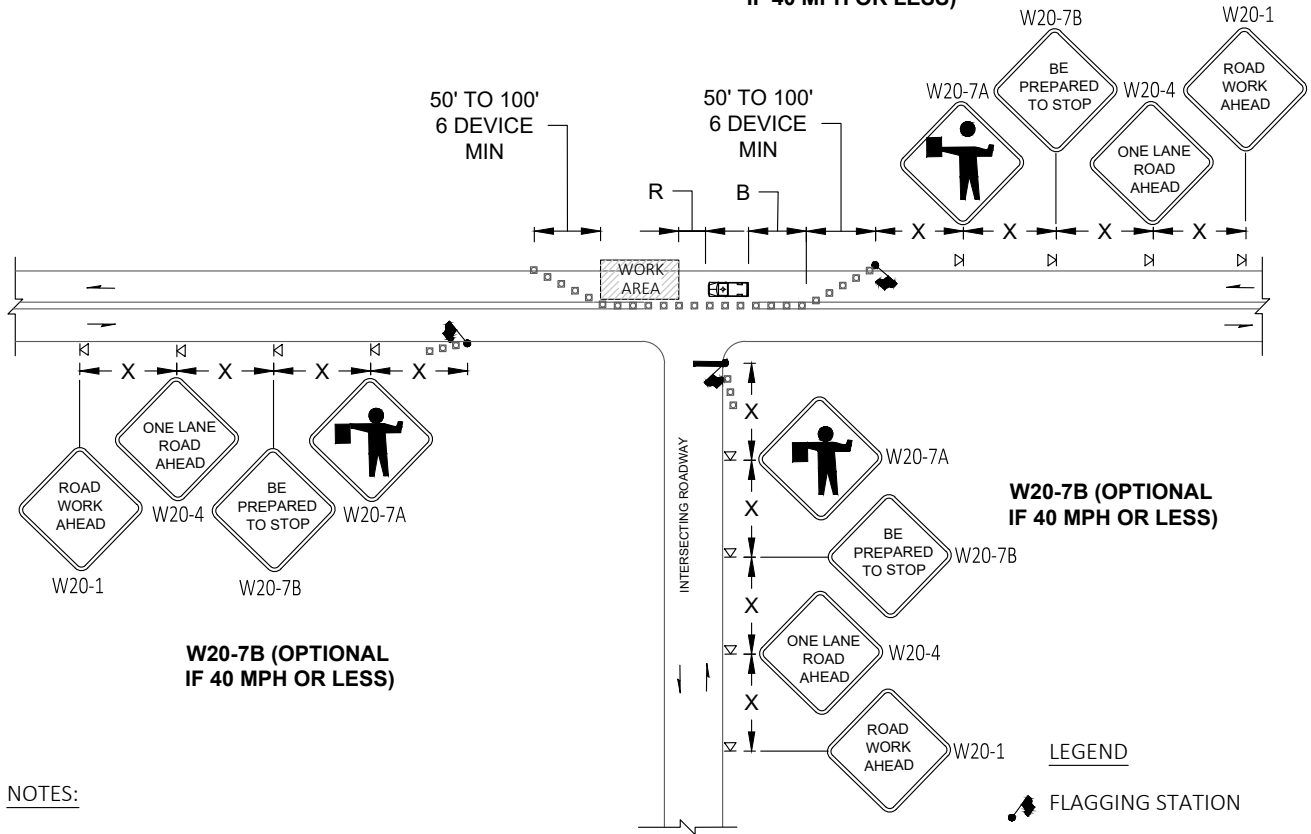


**W20-7B (OPTIONAL
IF 40 MPH OR LESS)**



**W20-7B (OPTIONAL
IF 40 MPH OR LESS)**

NOTES:

1. ALL SIGNS ARE BLACK ON ORANGE
2. EXTENDING THE CHANNELIZING DEVICE TAPER ACROSS SHOULDER IS RECOMMENDED.
3. NIGHT WORK REQUIRES ADDITIONAL ROADWAY LIGHTING AT FLAGGING STATIONS. SEE THE STANDARD SPECIFICATIONS FOR ADDITIONAL DETAILS.
4. SEE SPECIAL PROVISIONS FOR WORK HOUR RESTRICTIONS.

LEGEND

- FLAGGING STATION
- TEMPORARY SIGN LOCATION
- CHANNELIZING DEVICES
- PROTECTIVE VEHICLE

BUFFER DATA

LONGITUDINAL BUFFER SPACE = B				
SPEED (MPH)	25	30	35	40
LENGTH (feet)	155	200	250	305
BUFFER VEHICLE ROLL AHEAD DISTANCE = R				
TRANSPORTABLE ATTENUATOR		30 FEET MIN TO 100 FEET MAX		
MINIMUM HOST VEHICLE WEIGHT 15,000 LBS. THE MAXIMUM WEIGHT SHALL BE IN ACCORDANCE WITH THE MANUFACTURERS RECOMMENDATION		30 FEET MIN TO 100 FEET MAX		
PROTECTIVE VEHICLE		NO SPECIFIED DISTANCE REQUIRED		
MAY BE A WORK VEHICLE STRATEGICALLY LOCATED TO SHIELD THE WORK AREA		NO SPECIFIED DISTANCE REQUIRED		

CHANNELIZATION DEVICE SPACING (feet)

MPH	TAPER	TANGENT
35/ 45	10 to 20	60
25/ 30	10 to 20	40

SIGN SPACING = X (1)

RURAL ROADS & URBAN ARTERIALS	35/ 40 MPH	350'+
RURAL ROADS, URBAN ARTERIALS, RESIDENTIAL & BUSINESS DISTRICTS	25/ 30 MPH	200'+ (2)
URBAN STREETS	25 MPH OR LESS	100'+ (2)

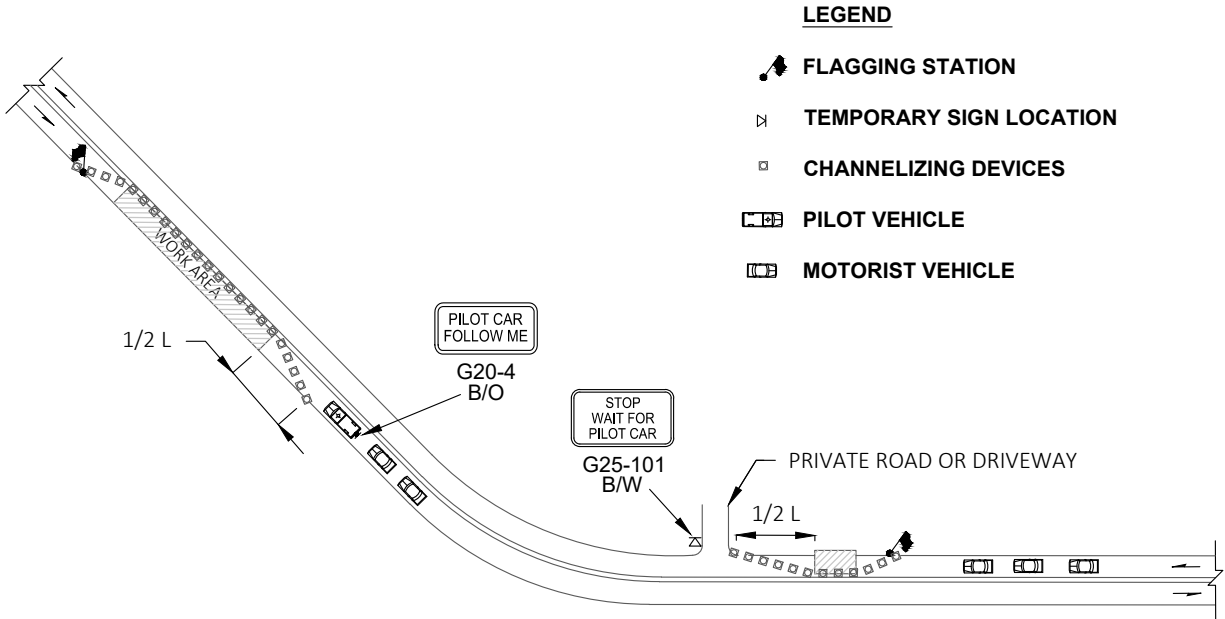
(1) ALL SPACING MAY BE ADJUSTED TO ACCOMMODATE INTERSECTIONS AND DRIVEWAYS.
(2) THIS SPACING MAY BE REDUCED IN URBAN AREAS TO FIT ROADWAY CONDITIONS.



PUBLICATION DATE: _____ REVISION DATE: **02/11/2020**

STANDARD DETAIL NUMBER: **901** SCALE: **NOT TO SCALE**

ONE-LANE, TWO-WAY TRAFFIC CONTROL WITH FLAGGERS

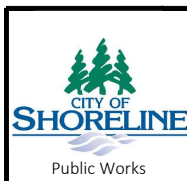


NOTES:

1. REFER TO SHEET TC1 FOR ADDITIONAL SIGNING AND FLAGGING DETAILS NOT SHOWN.
2. CHANNELIZING DEVICES ARE RECOMMENDED ALONG CENTERLINE TO SEPARATE TRAFFIC FROM WORK OPERATION. DEVICES ARE REQUIRED AT TAPERS TO SHIFT TRAFFIC MOVEMENT BETWEEN LANES AND TO PROTECT ALL FLAGGING STATIONS.
3. SIGN G25-101 IS RECOMMENDED FOR NON-STOP SIGN CONTROLLED APPROACHES SUCH AS PRIVATE ROADS AND DRIVEWAYS . THIS SIGN IS NOT REQUIRED TO BE ALUMINUM SUBSTRATE AND CAN BE MADE OF ALTERNATIVE MATERIALS.

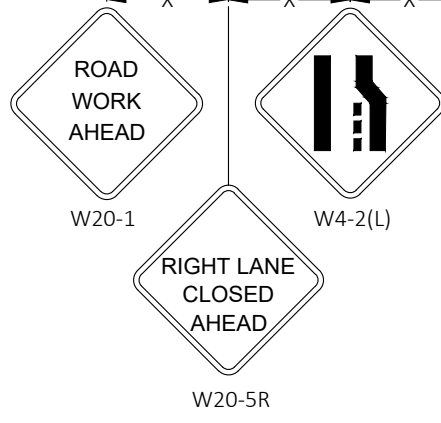
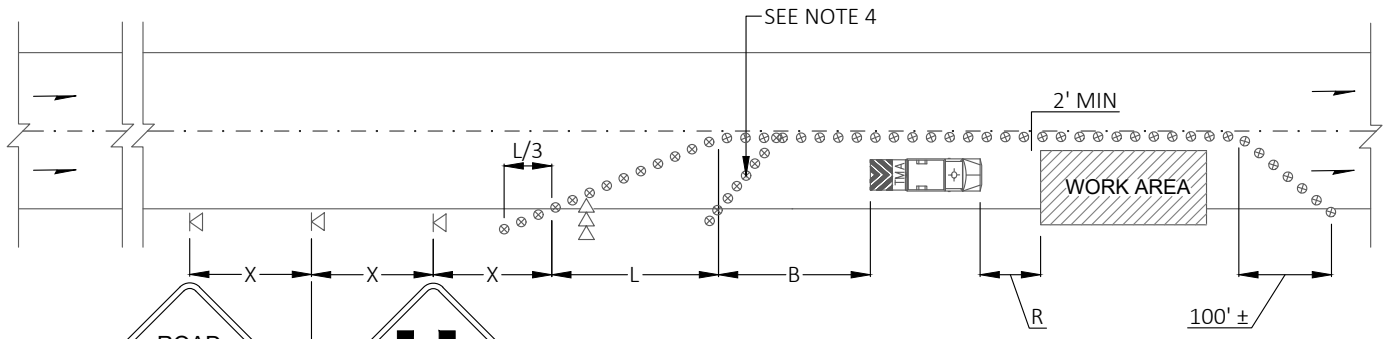
CHANNELIZATION DEVICE SPACING (feet)		
MPH	TAPER	TANGENT
35/ 45	10 to 20	60
25/ 30	10 to 20	40

MINIMUM TAPER LENGTH = L (feet)				
LANE WIDTH (feet)	POSTED SPEED (mph)			
	25	30	35	40
10	105	150	205	270
11	115	165	225	295
12	125	180	245	320



PUBLICATION DATE:	REVISION DATE: 02/11/2020
STANDARD DETAIL NUMBER: 902	SCALE: NOT TO SCALE

PILOT CAR OPERATION



MINIMUM LANE CLOSURE TAPER LENGTH = L (feet)

LANE WIDTH (feet)	POSTED SPEED (mph)			
	25	30	35	40
10	105	150	205	270
11	115	165	225	295
12	125	180	245	320

MINIMUM SHOULDER TAPER LENGTH = L/3 (feet)

SHOULDER WIDTH (feet)	POSTED SPEED (mph)			
	25	30	35	40
8	40	40	60	90
10	40	60	90	90

CHANNELIZATION DEVICE SPACING (feet)

MPH	TAPER	TANGENT
35/ 45	30	60
25/ 30	20	40

SIGN SPACING = X (1)

RURAL ROADS & URBAN ARTERIALS	35/ 40 MPH	350'±
RURAL ROADS, URBAN ARTERIALS, RESIDENTIAL & BUSINESS DISTRICTS	25/ 30 MPH	200'± (2)
URBAN STREETS	25 MPH OR LESS	100'± (2)

(1) ALL SPACING MAY BE ADJUSTED TO ACCOMMODATE INTERSECTIONS AND DRIVEWAYS.
 (2) THIS SPACING MAY BE REDUCED IN URBAN AREAS TO FIT ROADWAY CONDITIONS.

- LEGEND**
- ⊠ TEMPORARY SIGN LOCATION
 - ⊗ TRAFFIC SAFETY DRUM
 - ⇨⇨ SEQUENTIAL ARROW SIGN
 - 🚚 TRANSPORTABLE ATTENUATOR

- NOTES:**
- NO FLAGGERS OR SPOTTERS.
 - EXTEND DEVICE TAPER AT L/3 ACROSS SHOULDER.
 - DEVICES SHALL NOT ENCROACH INTO THE ADJACENT LANE.
 - USE TRAVERSE DEVICES IN CLOSED LANE EVERY 1000' (RECOMMENDED).
 - DEVICES SPACING FOR THE DOWNSTREAM TAPER SHALL BE 20'.
 - ALL SIGNS ARE BLACK ON ORANGE.
 - SEE SPECIAL PROVISIONS FOR WORK HOUR RESTRICTIONS.

BUFFER DATA

LONGITUDINAL BUFFER SPACE = B				
SPEED (MPH)	25	30	35	40
LENGTH (feet)	155	200	250	305
BUFFER VEHICLE ROLL AHEAD DISTANCE = R				
TRANSPORTABLE ATTENUATOR	MINIMUM HOST VEHICLE WEIGHT 15,000 LBS. THE MAXIMUM WEIGHT SHALL BE IN ACCORDANCE WITH THE MANUFACTURERS RECOMMENDATION			30 FEET MIN TO 100 FEET MAX

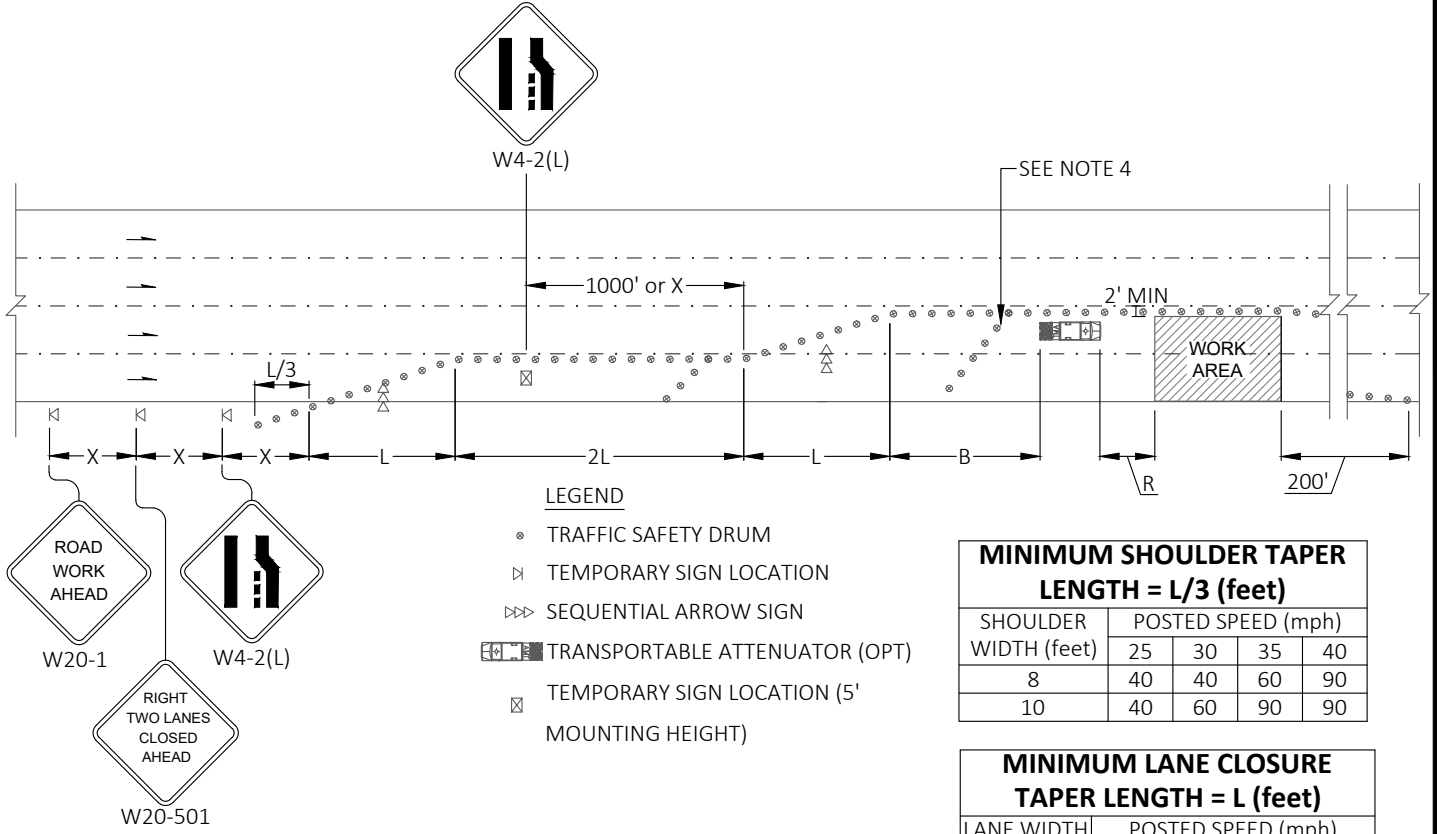


PUBLICATION DATE:	REVISION DATE: 02/11/2020
STANDARD DETAIL NUMBER: 903	SCALE: NOT TO SCALE
SINGLE-LANE CLOSURE FOR MULTI-LANE ROADWAYS	

SIGN SPACING = X (1)		
RURAL ROADS & URBAN ARTERIALS	35/ 40 MPH	350'±
RURAL ROADS, URBAN ARTERIALS, RESIDENTIAL & BUSINESS DISTRICTS	25/ 30 MPH	200'± (2)
URBAN STREETS	25 MPH OR LESS	100'± (2)

(1) ALL SPACING MAY BE ADJUSTED TO ACCOMMODATE INTERSECTIONS AND DRIVEWAYS.
(2) THIS SPACING MAY BE REDUCED IN URBAN AREAS TO FIT ROADWAY CONDITIONS.

CHANNELIZATION DEVICE SPACING (feet)		
MPH	TAPER	TANGENT
35/ 45	30	60
25/ 30	20	40



LEGEND

- TRAFFIC SAFETY DRUM
- ⊗ TEMPORARY SIGN LOCATION
- ⊗⊗ SEQUENTIAL ARROW SIGN
- ▣ TRANSPORTABLE ATTENUATOR (OPT)
- ⊗ TEMPORARY SIGN LOCATION (5' MOUNTING HEIGHT)

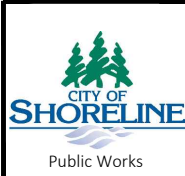
MINIMUM SHOULDER TAPER LENGTH = L/3 (feet)				
SHOULDER WIDTH (feet)	POSTED SPEED (mph)			
	25	30	35	40
8	40	40	60	90
10	40	60	90	90

MINIMUM LANE CLOSURE TAPER LENGTH = L (feet)				
LANE WIDTH (feet)	POSTED SPEED (mph)			
	25	30	35	40
10	105	150	205	270
11	115	165	225	295
12	125	180	245	320

NOTES:

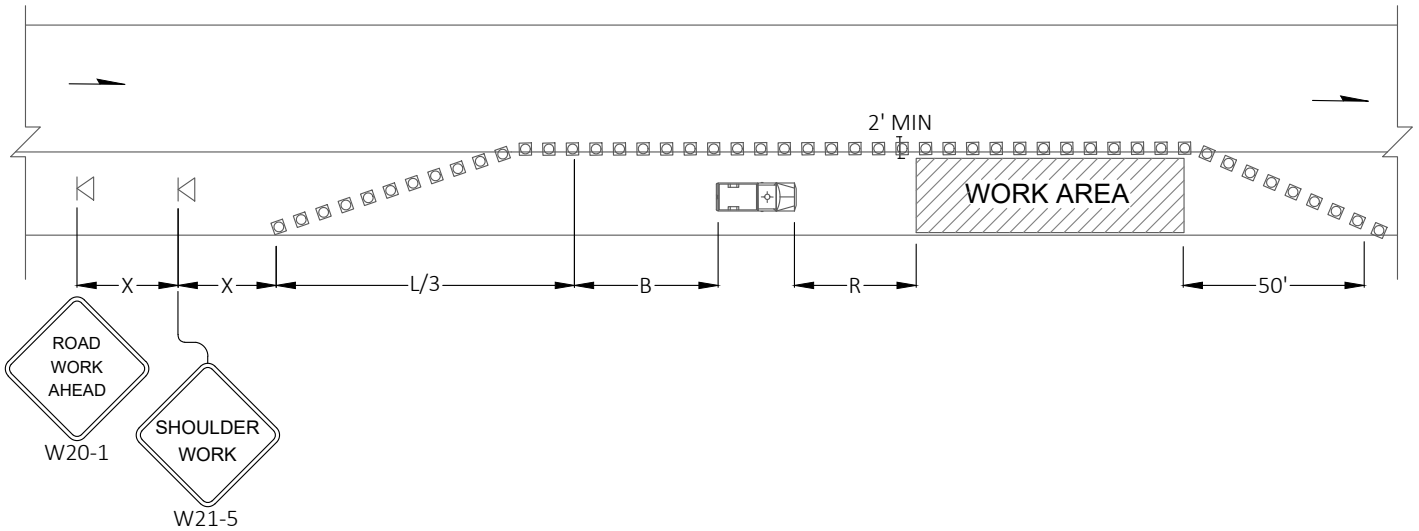
1. NO FLAGGERS OR SPOTTERS.
2. EXTEND DEVICE TAPER AT L/3 ACROSS SHOULDER.
3. DEVICES SHALL NOT ENCROACH INTO THE ADJACENT LANE.
4. USE TRAVERSE DEVICES IN CLOSED LANE EVERY 1000' (RECOMMENDED).
5. DEVICES SPACING FOR THE DOWNSTREAM TAPER SHALL BE 20'.
6. ALL SIGNS ARE BLACK ON ORANGE.
7. SEE SPECIAL PROVISIONS FOR WORK HOUR RESTRICTIONS.

BUFFER DATA				
LONGITUDINAL BUFFER SPACE = B				
SPEED (MPH)	25	30	35	40
LENGTH (feet)	155	200	250	305
BUFFER VEHICLE ROLL AHEAD DISTANCE = R				
TRANSPORTABLE ATTENUATOR				30 FEET MIN TO 100 FEET MAX
MINIMUM HOST VEHICLE WEIGHT 15,000 LBS. THE MAXIMUM WEIGHT SHALL BE IN ACCORDANCE WITH THE MANUFACTURERS RECOMMENDATION				






PUBLICATION DATE:	REVISION DATE: 02/11/2020
STANDARD DETAIL NUMBER: 904	SCALE: NOT TO SCALE
DOUBLE -LANE CLOSURE FOR MULTI -LANE ROADWAY	

SIGN SPACING = X (1)		
RURAL ROADS & URBAN ARTERIALS	35/ 40 MPH	350'+
RURAL ROADS, URBAN ARTERIALS, RESIDENTIAL & BUSINESS DISTRICTS	25/ 30 MPH	200'+ (2)
URBAN STREETS	25 MPH OR LESS	100'+ (2)
(1) ALL SPACING MAY BE ADJUSTED TO ACCOMMODATE INTERSECTIONS AND DRIVEWAYS.		
(2) THIS SPACING MAY BE REDUCED IN URBAN AREAS TO FIT ROADWAY CONDITIONS.		



LEGEND

-  TEMPORARY SIGN LOCATION
-  CHANNELIZING DEVICES
-  PROTECTIVE VEHICLE

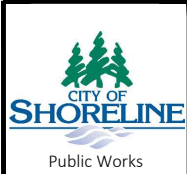
CHANNELIZATION DEVICE SPACING (feet)		
MPH	TAPER	TANGENT
35/ 45	30	60
25/ 30	20	40

NOTES:

1. NO FLAGGERS OR SPOTTERS.
2. DEVICES SPACING FOR THE DOWNSTREAM TAPER SHALL BE 20'.
3. ALL SIGNS ARE BLACK ON ORANGE.

MINIMUM SHOULDER TAPER LENGTH = L/3 (feet)				
SHOULDER WIDTH (feet)	POSTED SPEED (mph)			
	25	30	35	40
8	40	40	60	90
10	40	60	90	90

BUFFER DATA				
LONGITUDINAL BUFFER SPACE = B				
SPEED (MPH)	25	30	35	40
LENGTH (feet)	155	200	250	305
BUFFER VEHICLE ROLL AHEAD DISTANCE = R				
PROTECTIVE VEHICLE	MAY BE A WORK VEHICLE STRATEGICALLY LOCATED TO SHIELD THE WORK AREA			NO SPECIFIED DISTANCE REQUIRED

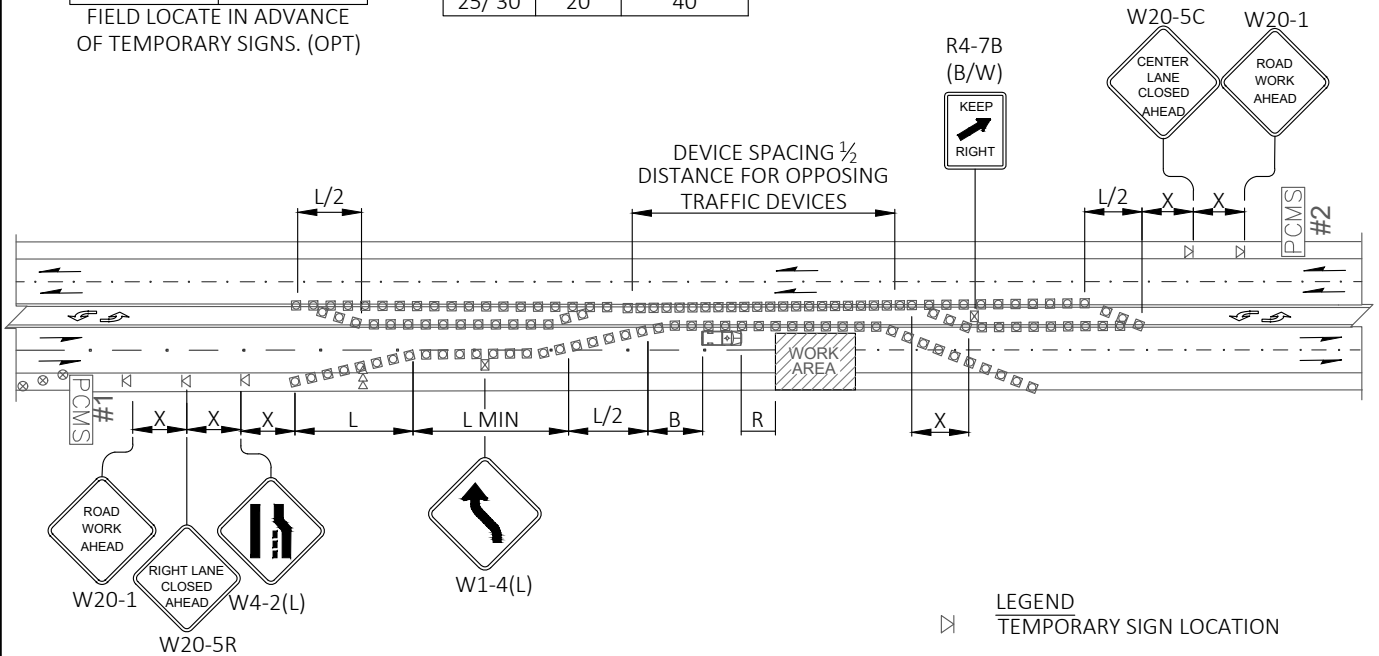


PUBLICATION DATE:	REVISION DATE: 02/11/2020
STANDARD DETAIL NUMBER: 905	SCALE: NOT TO SCALE
SHOULDER CLOSURE - LOW SPEED (40 MPH OR LESS)	

PCMS	
1	2
CENTER LANE CLOSED	NO LEFT TURNING
2.0 SEC	2.0 SEC

FIELD LOCATE IN ADVANCE OF TEMPORARY SIGNS. (OPT)

CHANNELIZATION DEVICE SPACING (feet)		
MPH	TAPER	TANGENT
35/ 45	30	60
25/ 30	20	40



NOTES:

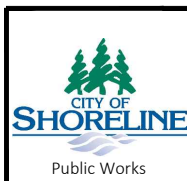
1. NO FLAGGER'S OR SPOTTERS.
2. RECOMMEND EXTENDING DEVICE TAPER (L/3) ACROSS SHOULDER.
3. FOR POSTED SPEED LIMITS OF 30 MPH OR LESS, USE SIGN W1-3 IN LIEU OF SIGN W1-4.
4. ALL SIGNS ARE BLACK ON ORANGE UNLESS OTHERWISE DESIGNATED.
5. SEE SPECIAL PROVISIONS FOR WORK HOUR RESTRICTIONS.

SIGN SPACING = X (1)		
RURAL ROADS & URBAN ARTERIALS	35/ 40 MPH	350'+
RURAL ROADS, URBAN ARTERIALS, RESIDENTIAL & BUSINESS DISTRICTS	25/ 30 MPH	200'+ (2)
URBAN STREETS	25 MPH OR LESS	100'+ (2)

(1) ALL SPACING MAY BE ADJUSTED TO ACCOMMODATE INTERSECTIONS AND DRIVEWAYS.
(2) THIS SPACING MAY BE REDUCED IN URBAN AREAS TO FIT ROADWAY CONDITIONS.

MINIMUM TAPER LENGTH = L (feet)				
LANE WIDTH (feet)	POSTED SPEED (mph)			
	25	30	35	40
10	105	150	205	270
11	115	165	225	295
12	125	180	245	320

BUFFER DATA				
LONGITUDINAL BUFFER SPACE = B				
SPEED (MPH)	25	30	35	40
LENGTH (feet)	155	200	250	305
BUFFER VEHICLE ROLL AHEAD DISTANCE = R				
PROTECTIVE VEHICLE - MAY BE A WORK VEHICLE STRATEGICALLY LOCATED TO SHIELD THE WORK AREA			NO SPECIFIED DISTANCE REQUIRED	
TRANSPORTATION ATTENUATOR - MINIMUM HOST VEHICLE WEIGHT 15,000 LBS. THE MAXIMUM WEIGHT SHALL BE IN ACCORDANCE WITH THE MANUFACTURERS RECOMMENDATION.			30 FEET MIN - 100 FEET MAX	

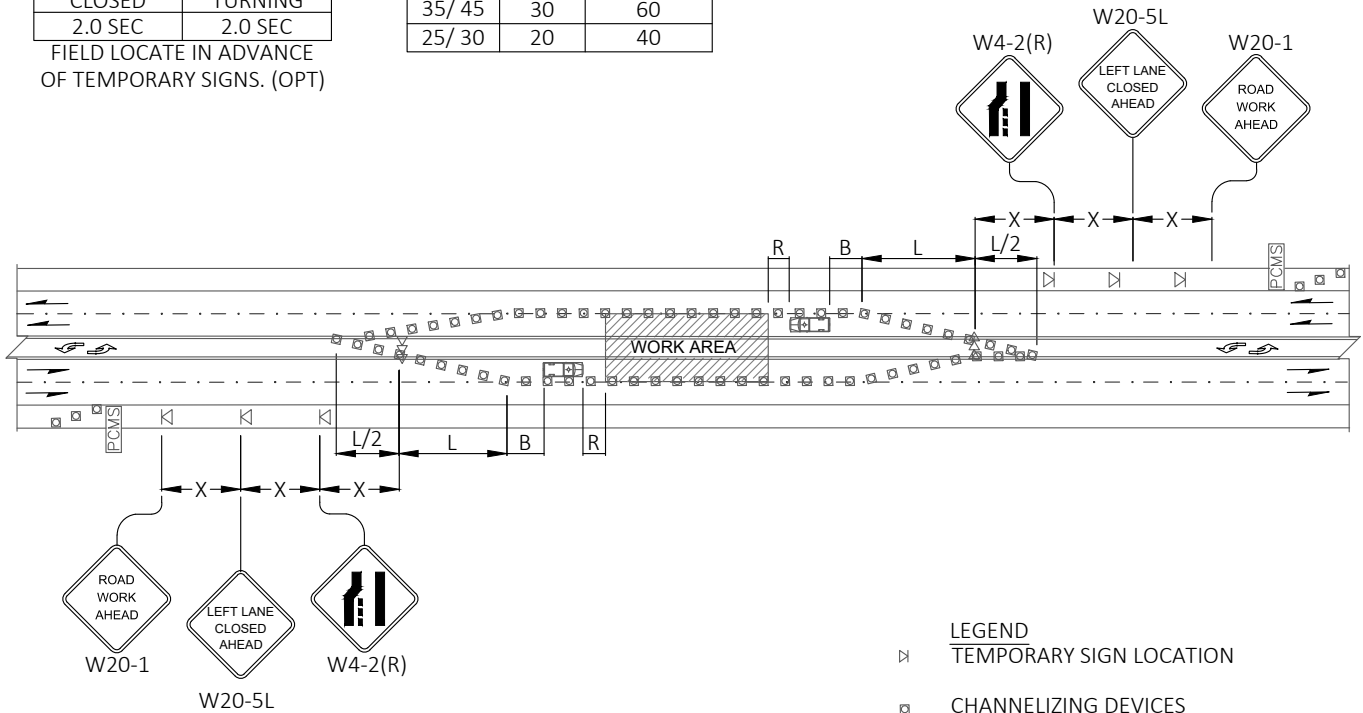


PUBLICATION DATE:	REVISION DATE: 02/11/2020
STANDARD DETAIL NUMBER: 906	SCALE: NOT TO SCALE
RIGHT LANE CLOSURE WITH SHIFT - 5 LANE ROADWAY	

PCMS	
1	2
CENTER LANE CLOSED	NO LEFT TURNING
2.0 SEC	2.0 SEC

FIELD LOCATE IN ADVANCE OF TEMPORARY SIGNS. (OPT)

CHANNELIZATION DEVICE SPACING (feet)		
MPH	TAPER	TANGENT
35/ 45	30	60
25/ 30	20	40



- LEGEND**
- ⊠ TEMPORARY SIGN LOCATION
 - ▣ CHANNELIZING DEVICES
 - ⊢⊢ SEQUENTIAL ARROW SIGN
 - ⊠+⊠ PROTECTIVE VEHICLE
 - PCMS PORTABLE CHANGEABLE MESSAGE SIGN

NOTES:

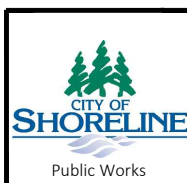
1. NO FLAGGER'S OR SPOTTERS.
2. ALL SIGNS ARE BLACK ON ORANGE.
3. SEE SPECIAL PROVISIONS FOR WORK HOUR RESTRICTIONS.

SIGN SPACING = X (1)		
RURAL ROADS & URBAN ARTERIALS	35/ 40 MPH	350'+
RURAL ROADS, URBAN ARTERIALS, RESIDENTIAL & BUSINESS DISTRICTS	25/ 30 MPH	200'+ (2)
URBAN STREETS	25 MPH OR LESS	100'+ (2)

(1) ALL SPACING MAY BE ADJUSTED TO ACCOMMODATE INTERSECTIONS AND DRIVEWAYS.
(2) THIS SPACING MAY BE REDUCED IN URBAN AREAS TO FIT ROADWAY CONDITIONS.

MINIMUM TAPER LENGTH = L (feet)				
LANE WIDTH (feet)	POSTED SPEED (mph)			
	25	30	35	40
10	105	150	205	270
11	115	165	225	295
12	125	180	245	320

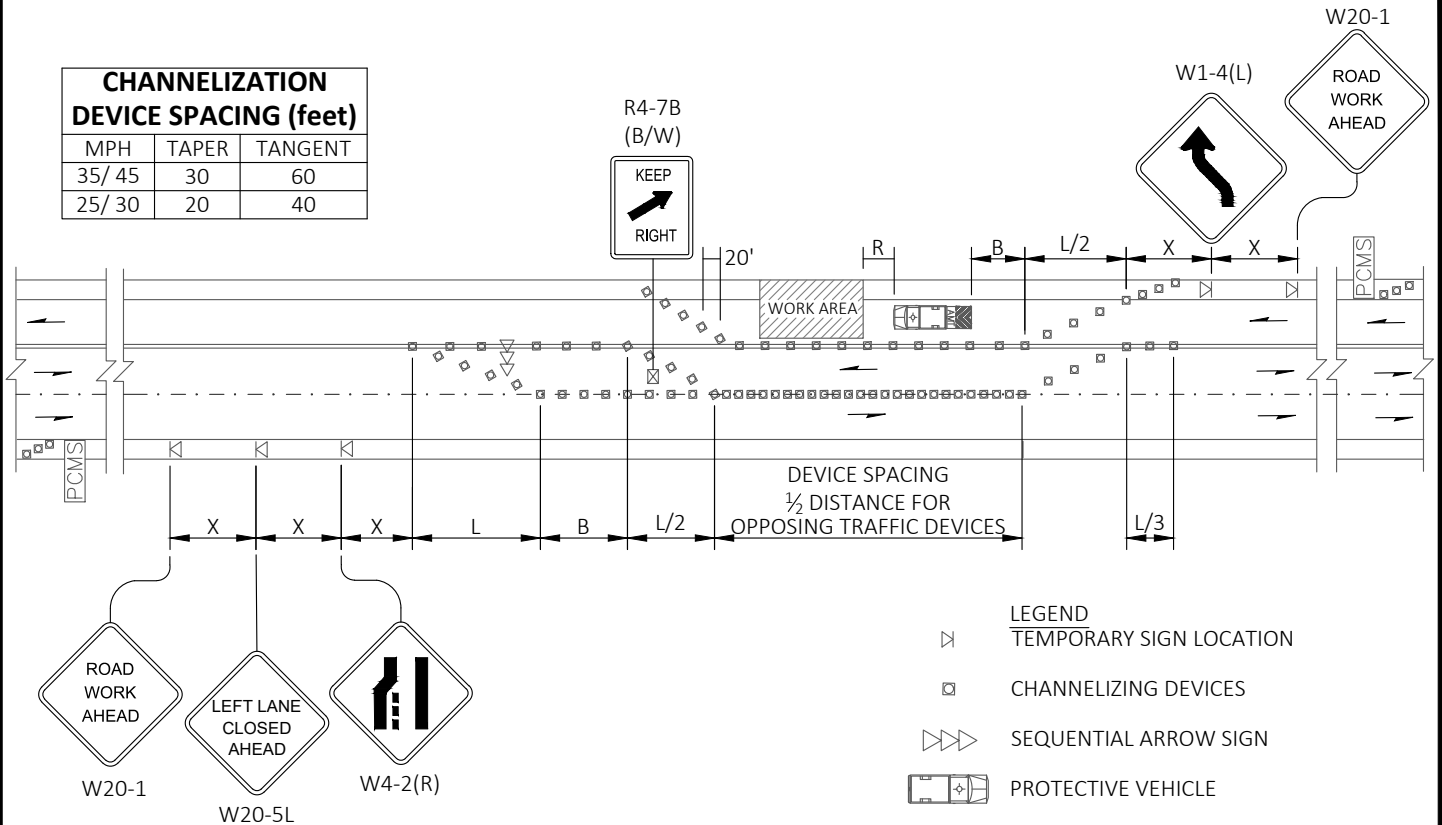
BUFFER DATA				
LONGITUDINAL BUFFER SPACE = B				
SPEED (MPH)	25	30	35	40
LENGTH (feet)	155	200	250	305
BUFFER VEHICLE ROLL AHEAD DISTANCE = R				
PROTECTIVE VEHICLE - MAY BE A WORK VEHICLE STRATEGICALLY LOCATED TO SHIELD THE WORK AREA	NO SPECIFIED DISTANCE REQUIRED			
TRANSPORTATION ATTENUATOR - MINIMUM HOST VEHICLE WEIGHT 15,000 LBS. THE MAXIMUM WEIGHT SHALL BE IN ACCORDANCE WITH THE MANUFACTURERS RECOMMENDATION.	30 FEET MIN - 100 FEET MAX			



PUBLICATION DATE: _____ REVISION DATE: **02/11/2020**
STANDARD DETAIL NUMBER: **907** SCALE: **NOT TO SCALE**
LEFT LANE AND CENTER TURN LANE CLOSURE - 5 LANE ROADWAY

**CHANNELIZATION
DEVICE SPACING (feet)**

MPH	TAPER	TANGENT
35/ 45	30	60
25/ 30	20	40



LEGEND

- ▷ TEMPORARY SIGN LOCATION
- ◻ CHANNELIZING DEVICES
- ▷▷▷ SEQUENTIAL ARROW SIGN
- PROTECTIVE VEHICLE
- PCMS PORTABLE CHANGEABLE MESSAGE SIGN
- ◻ TEMPORARY SIGN LOCATION (5' MOUNTING HEIGHT)

NOTES:

- NO FLAGGERS OR SPOTTERS.
- FOR SPEED LIMITS OF 30 MPH OR LESS, USE SIGN W1-3 IN LIEU OF SIGN W1-4.
- RECOMMENDED EXTENDING DEVICE TAPER (L/3) ACROSS SHOULDER.
- ALL SIGNS ARE BLACK ON ORANGE UNLESS OTHERWISE DESIGNATED.
- SEE SPECIAL PROVISIONS FOR WORK HOUR RESTRICTIONS.

SIGN SPACING = X (1)

RURAL ROADS & URBAN ARTERIALS	35/ 40 MPH	350'+
RURAL ROADS, URBAN ARTERIALS, RESIDENTIAL & BUSINESS DISTRICTS	25/ 30 MPH	200'+ (2)
URBAN STREETS	25 MPH OR LESS	100'+ (2)

(1) ALL SPACING MAY BE ADJUSTED TO ACCOMMODATE INTERSECTIONS AND DRIVEWAYS.
(2) THIS SPACING MAY BE REDUCED IN URBAN AREAS TO FIT ROADWAY CONDITIONS.

**MINIMUM TAPER
LENGTH = L (feet)**

LANE WIDTH (feet)	POSTED SPEED (mph)			
	25	30	35	40
10	105	150	205	270
11	115	165	225	295
12	125	180	245	320

BUFFER DATA

LONGITUDINAL BUFFER SPACE = B				
SPEED (MPH)	25	30	35	40
LENGTH (feet)	155	200	250	305
BUFFER VEHICLE ROLL AHEAD DISTANCE = R				
PROTECTIVE VEHICLE - MAY BE A WORK VEHICLE STRATEGICALLY LOCATED TO SHIELD THE WORK AREA			NO SPECIFIED DISTANCE REQUIRED	
TRANSPORTATION ATTENUATOR - MINIMUM HOST VEHICLE WEIGHT 15,000 LBS. THE MAXIMUM WEIGHT SHALL BE IN ACCORDANCE WITH THE MANUFACTURERS RECOMMENDATION.			30 FEET MIN - 100 FEET MAX	



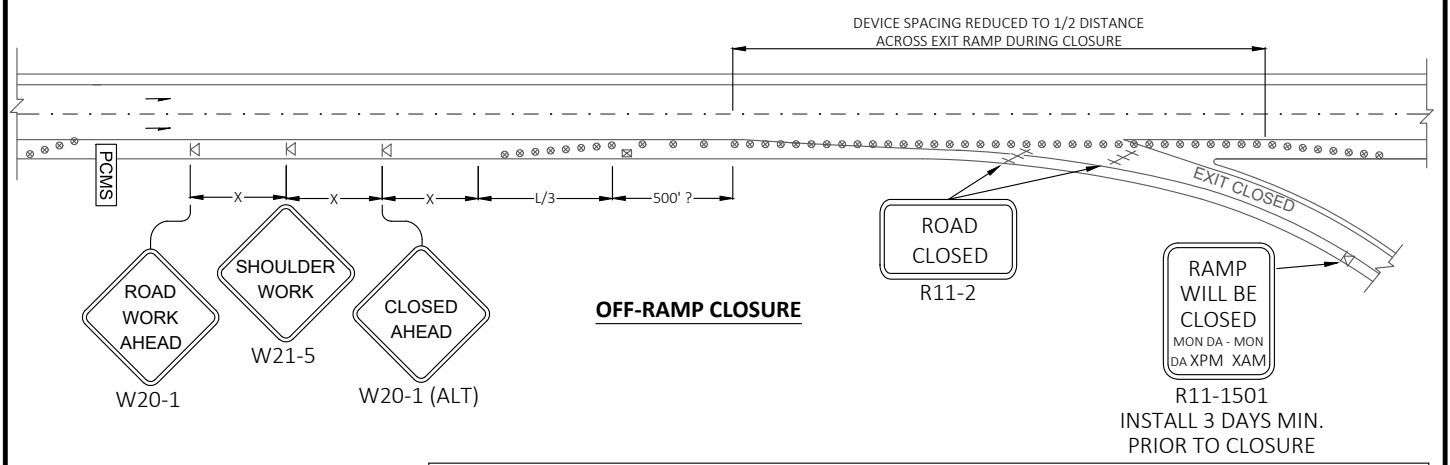
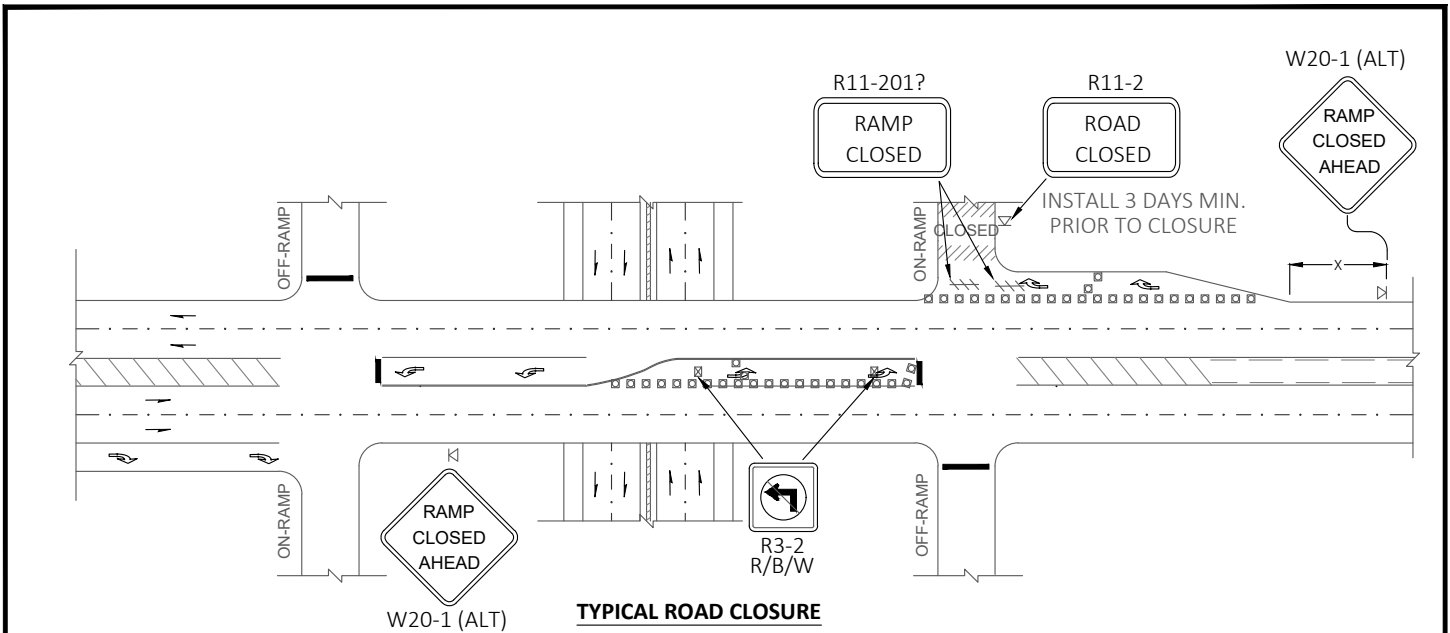
PUBLICATION DATE:

REVISION DATE: **02/11/2020**

STANDARD DETAIL NUMBER: **908**

SCALE: **NOT TO SCALE**

**LANE SHIFT - THREE LANE
ROADWAY**



SIGN SPACING = X (1)

RURAL ROADS & URBAN ARTERIALS	35/ 40 MPH	350'+
RURAL ROADS, URBAN ARTERIALS, RESIDENTIAL & BUSINESS DISTRICTS	25/ 30 MPH	200'+ (2)
URBAN STREETS	25 MPH OR LESS	100'+ (2)

(1) ALL SPACING MAY BE ADJUSTED TO ACCOMMODATE INTERSECTIONS AND DRIVEWAYS.
 (2) THIS SPACING MAY BE REDUCED IN URBAN AREAS TO FIT ROADWAY CONDITIONS.

LEGEND

- /// TYPE 3 BARRICADE
- CHANNELIZING DEVICES
- ⊗ TRAFFIC SAFETY DRUM
- ⊠ TEMPORARY SIGN LOCATION (5' MOUNTING HEIGHT)

MINIMUM SHOULDER TAPER LENGTH = L/3 (feet)

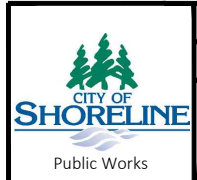
SHOULDER WIDTH (feet)	POSTED SPEED (mph)			
	25	30	35	40
8	40	40	60	90
10	40	60	90	90

CHANNELIZATION DEVICE SPACING (feet)

MPH	TAPER	TANGENT
35/ 45	30	60
25/ 30	20	40

NOTES:

1. NO FLAGGERS OR SPOTTERS.
2. TYPICAL APPLICATION SHOWN, ADJUST FOR SITE CONDITIONS.
3. ALL SIGNS ARE BLACK ON ORANGE UNLESS OTHERWISE DESIGNATED.
4. SEE SPECIAL PROVISIONS FOR CLOSURE HOUR RESTRICTIONS.



PUBLICATION DATE: _____ REVISION DATE: **02/11/2020**

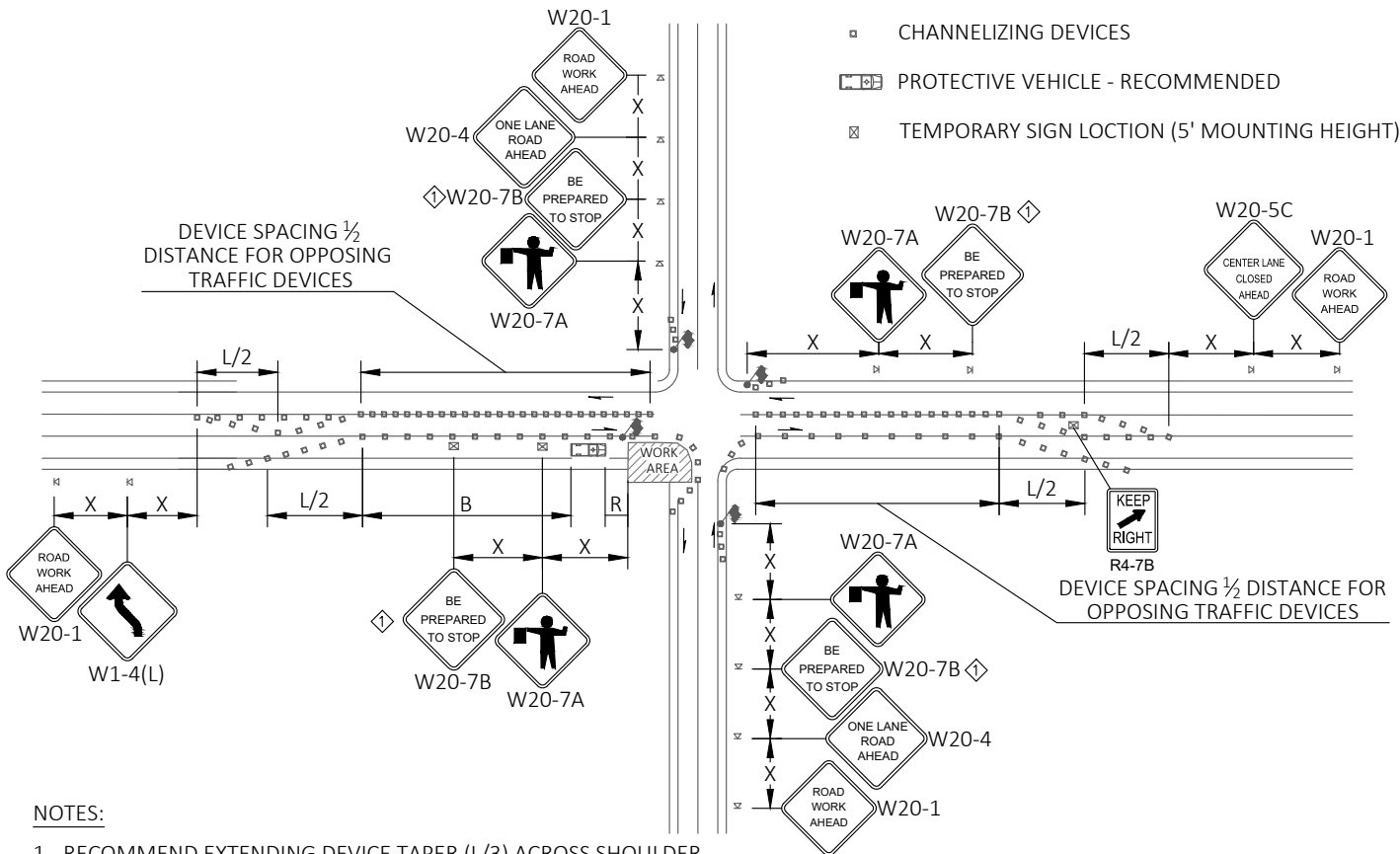
STANDARD DETAIL NUMBER: **909** SCALE: **NOT TO SCALE**

SHORT TERM RAMP CLOSURES

7. ALL SIGNS ARE BLACK ON ORANGE UNLESS OTHERWISE DESIGNATED.

◇ W20-7B IS OPTIONAL IF 40 MPH OR LESS

- LEGEND**
- ⦿ FLAGGING STATION
 - ⊠ TEMPORARY SIGN LOCATION
 - ▣ CHANNELIZING DEVICES
 - ▭ [PV] PROTECTIVE VEHICLE - RECOMMENDED
 - ⊠ TEMPORARY SIGN LOCATION (5' MOUNTING HEIGHT)



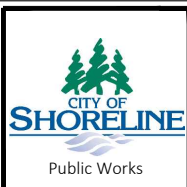
NOTES:

1. RECOMMEND EXTENDING DEVICE TAPER (L/3) ACROSS SHOULDER.
2. IF A SIGNAL IS PRESENT, IT SHALL BE SET TO "RED FLASH MODE" OR TURNED OFF DURING FLAGGING OPERATIONS.
3. LAW ENFORCEMENT OFFICER MAY BE USED IN LIEU OF FLAGGERS TO CONTROL INTERSECTION TRAFFIC. REQUIRED AT SIGNAL.
4. AT SIGNALIZED INTERSECTIONS A MINIMUM OF 2 LAW ENFORCEMENT OFFICERS ARE REQUIRED TO CONTROL THE INTERSECTION, OR AS APPROVED BY THE CITY TRAFFIC ENGINEER.
5. FOR SPEED LIMIT OF 30 MPH OR LESS USE SIGN W1-3 IN LIEU OF SIGN W1-4.
6. MAINTAIN A MINIMUM OF ONE ACCESS POINT FOR EACH BUSINESS WITHIN WORK AREA LIMITS.
7. ALL SIGNS ARE BLACK ON ORANGE UNLESS OTHERWISE DESIGNATED. MIN LANE WIDTH = 11'.

BUFFER DATA				
LONGITUDINAL BUFFER SPACE = B				
SPEED (MPH)	25	30	35	40
LENGTH (feet)	155	200	250	305
BUFFER VEHICLE ROLL AHEAD DISTANCE = R				
PROTECTIVE VEHICLE - MAY BE A WORK VEHICLE STRATEGICALLY LOCATED TO SHIELD THE WORK AREA	NO SPECIFIED DISTANCE REQUIRED			
TRANSPORTATION ATTENUATOR - MINIMUM HOST VEHICLE WEIGHT 15,000 LBS. THE MAXIMUM WEIGHT SHALL BE IN ACCORDANCE WITH THE MANUFACTURERS RECOMMENDATION.	30 FEET MIN - 100 FEET MAX			

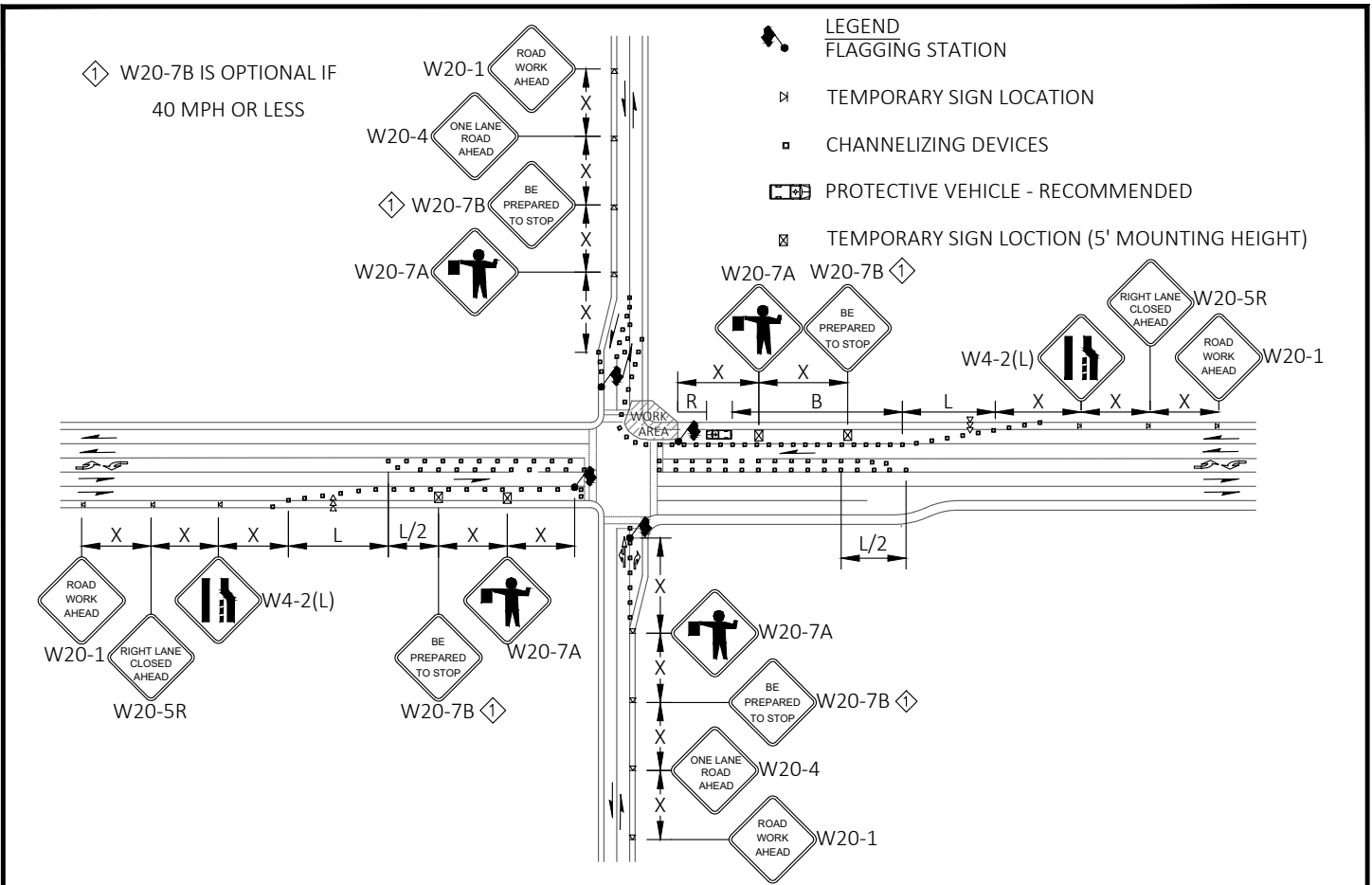
SIGN SPACING = X (1)		
RURAL ROADS & URBAN ARTERIALS	35/ 40 MPH	350'±
RURAL ROADS, URBAN ARTERIALS, RESIDENTIAL & BUSINESS DISTRICTS	25/ 30 MPH	200'± (2)
URBAN STREETS	25 MPH OR LESS	100'± (2)
(1) ALL SPACING MAY BE ADJUSTED TO ACCOMMODATE INTERSECTIONS AND DRIVEWAYS.		
(2) THIS SPACING MAY BE REDUCED IN URBAN AREAS TO FIT ROADWAY CONDITIONS.		

CHANNELIZATION DEVICE SPACING (feet)		
MPH	TAPER	TANGENT
35/ 45	30	60
25/ 30	20	40



PUBLICATION DATE: _____ REVISION DATE: **09/06/2023**
 STANDARD DETAIL NUMBER: **910** SCALE: **NOT TO SCALE**

INTERSECTION LANE CLOSURE - 3 LANE ROADWAY



⚠ W20-7B IS OPTIONAL IF
40 MPH OR LESS

LEGEND
FLAGGING STATION

- ⊠ TEMPORARY SIGN LOCATION
- ▣ CHANNELIZING DEVICES
- 🚚 PROTECTIVE VEHICLE - RECOMMENDED
- ⊠ TEMPORARY SIGN LOCATION (5' MOUNTING HEIGHT)

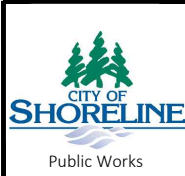
NOTES:

1. RECOMMEND EXTENDING DEVICE TAPER (L/3) ACROSS SHOULDER.
2. IF A SIGNAL IS PRESENT, IT SHALL BE SET TO "RED FLASH MODE" OR TURNED OFF DURING FLAGGING OPERATIONS.
3. LAW ENFORCEMENT OFFICER MAY BE USED IN LIEU OF FLAGGERS TO CONTROL INTERSECTION TRAFFIC. REQUIRED AT SIGNAL.
4. AT SIGNALIZED INTERSECTIONS A MINIMUM OF 2 LAW ENFORCEMENT OFFICERS ARE REQUIRED TO CONTROL THE INTERSECTION.
5. FOR SPEED LIMIT OF 30 MPH OR LESS USE SIGN W1-3 IN LIEU OF SIGN W1-4.
6. MAINTAIN A MINIMUM OF ONE ACCESS POINT FOR EACH BUSINESS WITHIN WORK AREA LIMITS.
7. ALL SIGNS ARE BLACK ON ORANGE UNLESS OTHERWISE DESIGNATED. MIN LANE WIDTH = 11'.

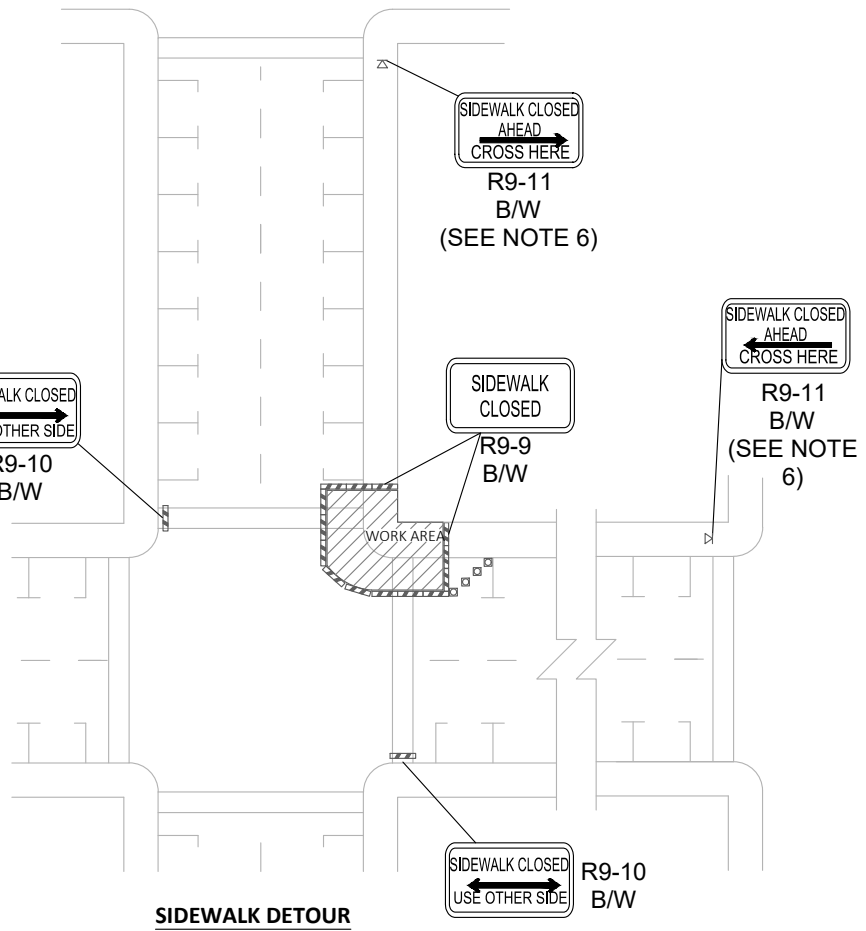
BUFFER DATA				
LONGITUDINAL BUFFER SPACE = B				
SPEED (MPH)	25	30	35	40
LENGTH (feet)	155	200	250	305
BUFFER VEHICLE ROLL AHEAD DISTANCE = R				
PROTECTIVE VEHICLE - MAY BE A WORK VEHICLE STRATEGICALLY LOCATED TO SHIELD THE WORK AREA			NO SPECIFIED DISTANCE REQUIRED	
TRANSPORTATION ATTENUATOR - MINIMUM HOST VEHICLE WEIGHT 15,000 LBS. THE MAXIMUM WEIGHT SHALL BE IN ACCORDANCE WITH THE MANUFACTURERS RECOMMENDATION.			30 FEET MIN - 100 FEET MAX	

SIGN SPACING = X (1)		
RURAL ROADS & URBAN ARTERIALS	35/ 40 MPH	350'±
RURAL ROADS, URBAN ARTERIALS, RESIDENTIAL & BUSINESS DISTRICTS	25/ 30 MPH	200'± (2)
URBAN STREETS	25 MPH OR LESS	100'± (2)
(1) ALL SPACING MAY BE ADJUSTED TO ACCOMMODATE INTERSECTIONS AND DRIVEWAYS.		
(2) THIS SPACING MAY BE REDUCED IN URBAN AREAS TO FIT ROADWAY CONDITIONS.		

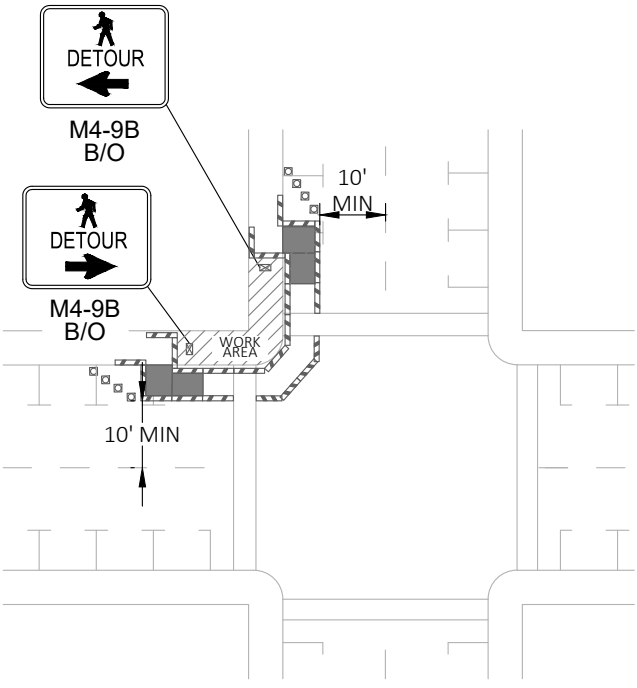
CHANNELIZATION DEVICE SPACING (feet)		
MPH	TAPER	TANGENT
35/ 45	30	60
25/ 30	20	40



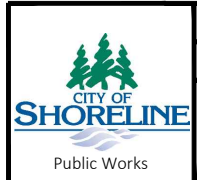
PUBLICATION DATE:	REVISION DATE: 02/11/2020
STANDARD DETAIL NUMBER: 911	SCALE: NOT TO SCALE
INTERSECTION LANE CLOSURE - 5 LANE ROADWAY	



- LEGEND**
- ⊠ TEMPORARY SIGN LOCATION
 - ▣ CHANNELIZING DEVICES
 - ▨ PEDESTRIAN CHANNELIZING DEVICES
 - TEMPORARY ADA COMPLIANT PEDESTRIAN RAMP FOR SIDEWALKS

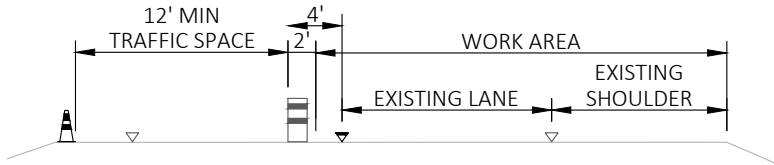


- NOTES:**
1. SIDEWALK DIVERSION IS THE PREFERRED PEDESTRIAN TRAFFIC CONTROL METHOD.
 2. CONTROLS SHOWN ARE FOR PEDESTRIAN TRAFFIC ONLY.
 3. A 60" PEDESTRIAN PATH WIDTH SHOULD BE MAINTAINED (48" IS THE MINIMUM).
 4. SEE STANDARD DETAILS 918 AND 919 FOR TEMPORARY PEDESTRIAN RAMP AND PLATFORM DETAILS.
 5. PEDESTRIAN FACILITIES THAT MEET OR EXCEED EXISTING ACCESSIBILITY PROVISIONS MUST BE MAINTAINED, SEE WSDOT STANDARD SPECIFICATION 1-10.2(1)B.
 6. INSTALL "NO PARKING" A-BOARD SIGNS ON BARRICADES THROUGHOUT THE WORK AREA 72 HOURS PRIOR TO IMPLEMENTING TRAFFIC CONTROL. PRIOR NOTIFICATION OF LOCAL LAW ENFORCEMENT REQUIRED.



PUBLICATION DATE:	REVISION DATE: 08/30/2023
STANDARD DETAIL NUMBER: 912	SCALE: NOT TO SCALE

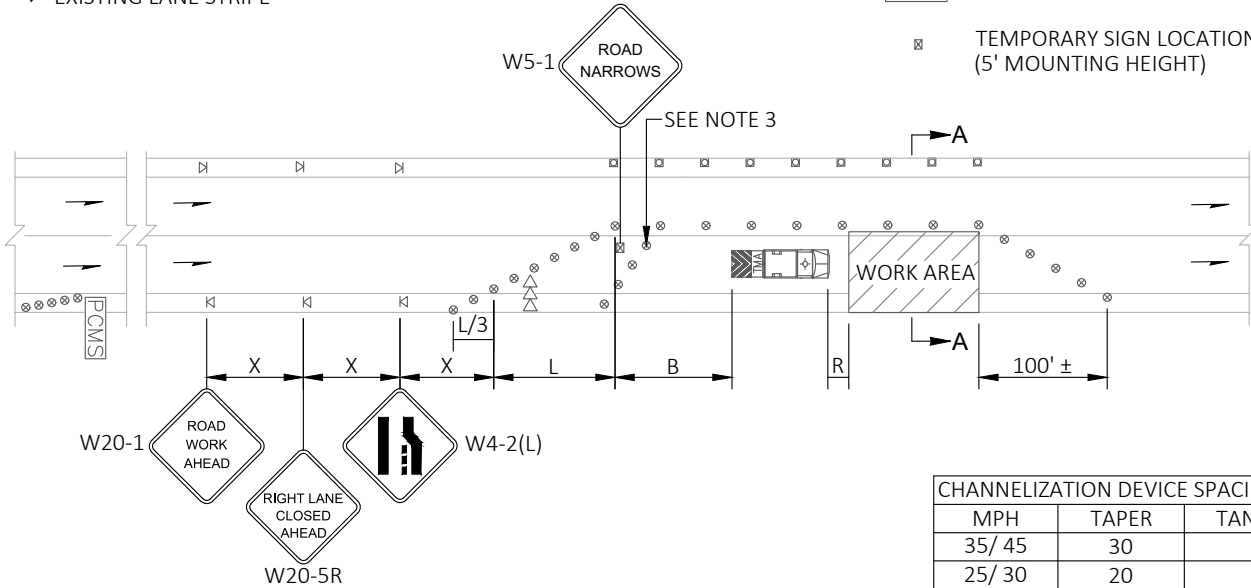
INTERSECTION PEDESTRIAN TRAFFIC CONTROL



TYPICAL SECTION A-A

- ▲ CHANNELIZING DEVICE
- ▽ EXISTING EDGE STRIPE
- ▼ EXISTING LANE STRIPE

- LEGEND**
- ⊘ TEMPORARY SIGN LOCATION
 - ⊠ CHANNELIZING DEVICES
 - ⊗ TRAFFIC SAFETY DRUM
 - ⇨⇨ SEQUENTIAL ARROW SIGN
 - ☑ TRANSPORTABLE ATTENUATOR
 - PCMS PORTABLE CHANGEABLE MESSAGE SIGN
 - ⊠ TEMPORARY SIGN LOCATION (5' MOUNTING HEIGHT)



MPH	TAPER	TANGENT
35/ 45	30	60
25/ 30	20	40

NOTES:

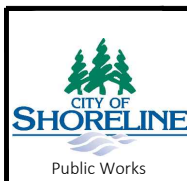
1. CONTROLS SHOWN ARE FOR PEDESTRIAN TRAFFIC ONLY.
2. A 60" PEDESTRIAN PATH WIDTH SHOULD BE MAINTAINED (48" IS THE MINIMUM).
3. CONTACT AND COORDINATE IMPACTED TRANSIT AGENCIES PRIOR TO IMPLEMENTING ANY CLOSURES.
4. SEE SHEET TC-52 FOR TEMPORARY PEDESTRIAN RAMP DETAILS.
5. ADA PEDESTRIAN FACILITIES MUST BE MAINTAINED, SEE STANDARD SPECIFICATION 1-10.2(1)B.
6. TEMPORARY PEDESTRIAN PUSH BUTTONS SHALL BE PLACED ON THE DIVERTED PATH WHEN EXISTING BUTTONS ARE NOT ACCESSIBLE TO PEDESTRIANS.

LANE WIDTH (feet)	POSTED SPEED (mph)			
	25	30	35	40
10	105	150	205	270
11	115	165	225	295
12	125	180	245	320

SHOULDER WIDTH (feet)	POSTED SPEED (mph)			
	25	30	35	40
8	40	40	60	90
10	40	60	90	90

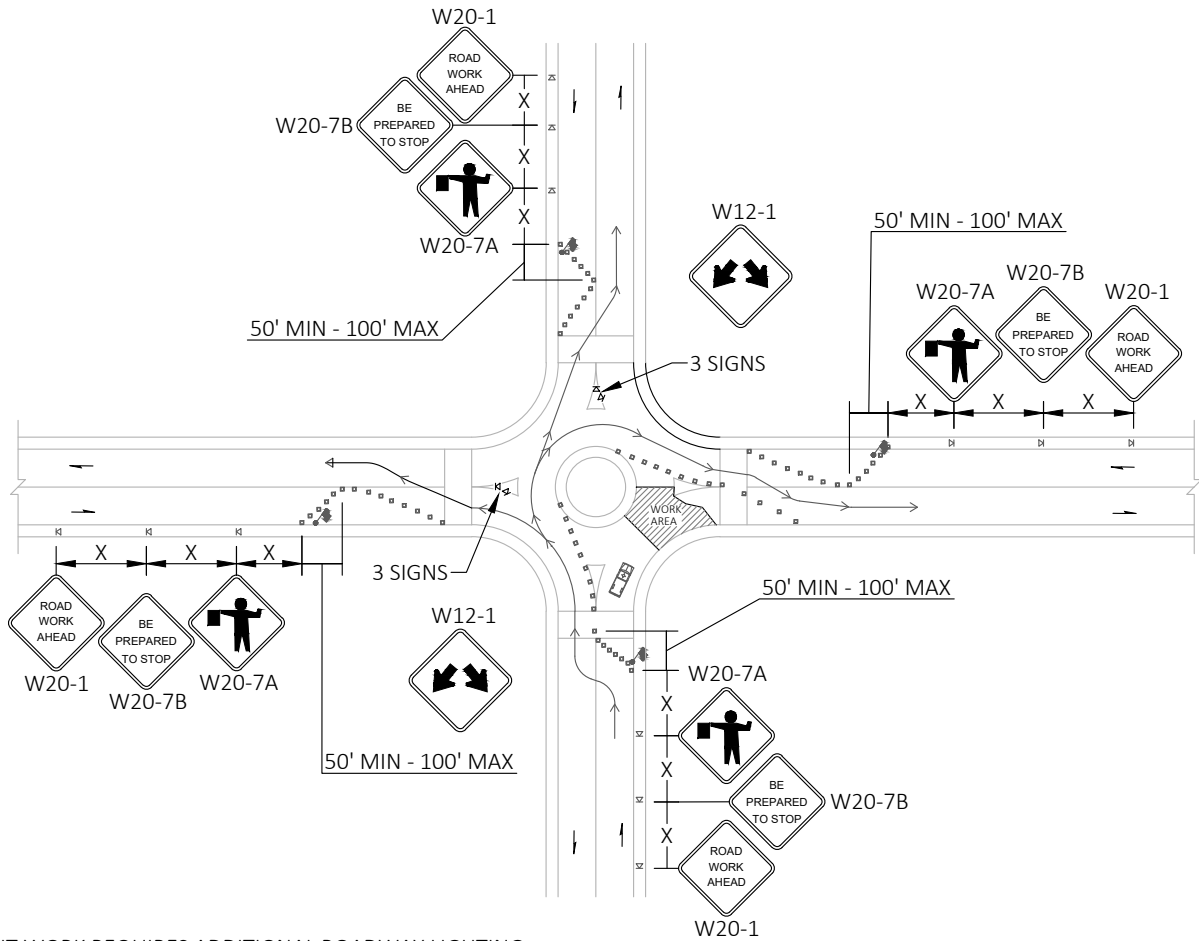
BUFFER DATA				
LONGITUDINAL BUFFER SPACE = B				
SPEED (MPH)	25	30	35	40
LENGTH (feet)	155	200	250	305
BUFFER VEHICLE ROLL AHEAD DISTANCE = R				
TRANSPORTABLE ATTENUATOR			30 FEET MIN TO 100 FEET MAX	
MINIMUM HOST VEHICLE WEIGHT 15,000 LBS. THE MAXIMUM WEIGHT SHALL BE IN ACCORDANCE WITH THE MANUFACTURERS RECOMMENDATION				

SIGN SPACING = X (1)		
RURAL ROADS & URBAN ARTERIALS	35/ 40 MPH	350'±
RURAL ROADS, URBAN ARTERIALS, RESIDENTIAL & BUSINESS DISTRICTS	25/ 30 MPH	200'± (2)
URBAN STREETS	25 MPH OR LESS	100'± (2)
(1) ALL SPACING MAY BE ADJUSTED TO ACCOMMODATE INTERSECTIONS AND DRIVEWAYS.		
(2) THIS SPACING MAY BE REDUCED IN URBAN AREAS TO FIT ROADWAY CONDITIONS.		



PUBLICATION DATE: _____ REVISION DATE: **02/11/2020**
 STANDARD DETAIL NUMBER: **913** SCALE: **NOT TO SCALE**

SINGLE LANE CLOSURE WITH SHIFT



NOTES:

1. NIGHT WORK REQUIRES ADDITIONAL ROADWAY LIGHTING
 AT FLAGGING STATIONS, SEE THE STANDARD SPECIFICATIONS FOR ADDITIONAL DETAILS.
2. PROTECTIVE VEHICLE RECOMMENDED - MAY BE A WORK VEHICLE.
3. TYPICAL APPLICATION SHOWN, ADJUST FOR SITE CONDITIONS.

LEGEND

- FLAGGING STATION
- TEMPORARY SIGN LOCATION
- CHANNELIZING DEVICES
- PROTECTIVE VEHICLE - RECOMMENDED

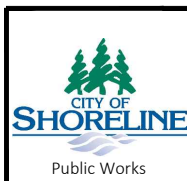
CHANNELIZATION DEVICE SPACING (feet)

MPH	TAPER	TANGENT
35/ 45	30	60
25/ 30	20	40

SIGN SPACING = X (1)

RURAL ROADS & URBAN ARTERIALS	35/ 40 MPH	350'±
RURAL ROADS, URBAN ARTERIALS, RESIDENTIAL & BUSINESS DISTRICTS	25/ 30 MPH	200'± (2)
URBAN STREETS	25 MPH OR LESS	100'± (2)

(1) ALL SPACING MAY BE ADJUSTED TO ACCOMMODATE INTERSECTIONS AND DRIVEWAYS.
 (2) THIS SPACING MAY BE REDUCED IN URBAN AREAS TO FIT ROADWAY CONDITIONS.



PUBLICATION DATE:

REVISION DATE: **02/11/2020**

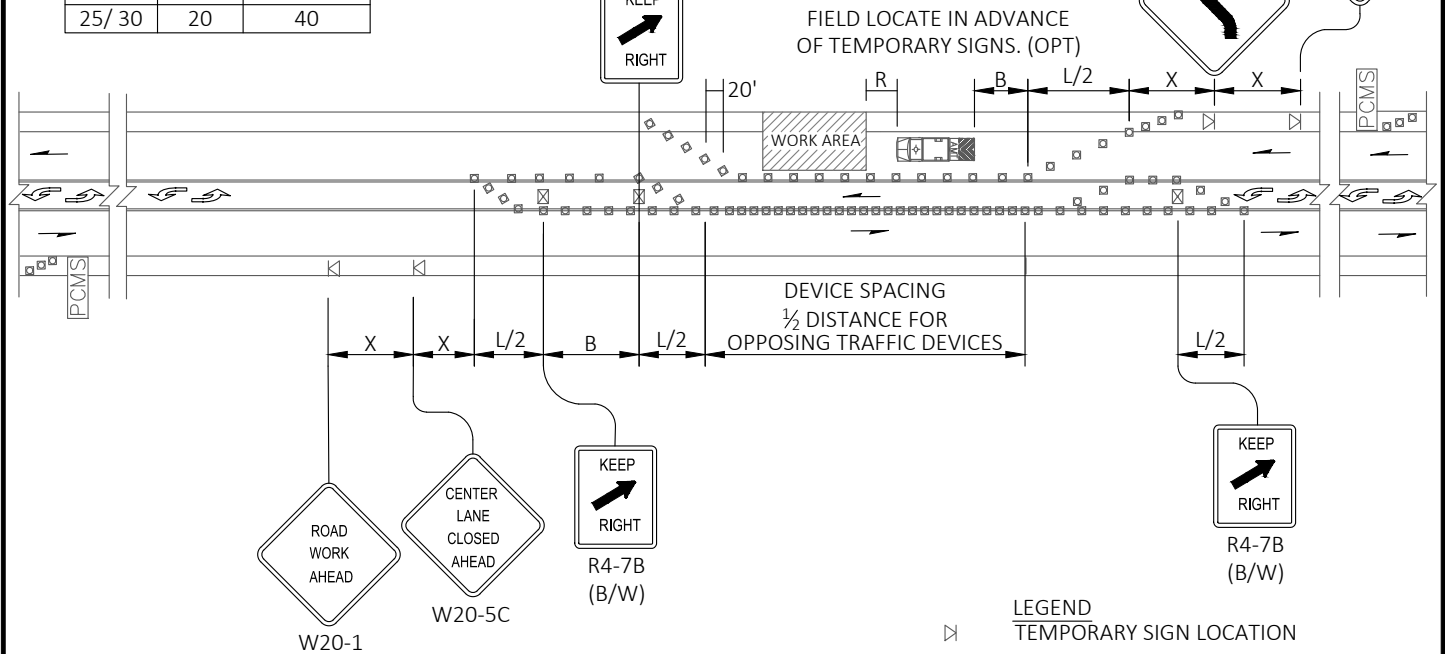
STANDARD DETAIL NUMBER: **914**

SCALE: **NOT TO SCALE**

TYPICAL ROUNDABOUT FLAGGING OPERATION

CHANNELIZATION DEVICE SPACING (feet)		
MPH	TAPER	TANGENT
35/ 45	30	60
25/ 30	20	40

PCMS	
1	2
CENTER LANE CLOSED	NO LEFT TURNING
2.0 SEC	2.0 SEC



NOTES:

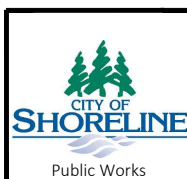
1. NO FLAGGERS OR SPOTTERS.
2. FOR SPEED LIMITS OF 30 MPH OR LESS, USE SIGN W1-3 IN LIEU OF SIGN W1-4.
3. RECOMMENDED EXTENDING DEVICE TAPER (L/3) ACROSS SHOULDER.
4. ALL SIGNS ARE BLACK ON ORANGE UNLESS OTHERWISE DESIGNATED.
5. SEE SPECIAL PROVISIONS FOR WORK HOUR RESTRICTIONS.

SIGN SPACING = X (1)		
RURAL ROADS & URBAN ARTERIALS	35/ 40 MPH	350'+
RURAL ROADS, URBAN ARTERIALS, RESIDENTIAL & BUSINESS DISTRICTS	25/ 30 MPH	200'+ (2)
URBAN STREETS	25 MPH OR LESS	100'+ (2)

(1) ALL SPACING MAY BE ADJUSTED TO ACCOMMODATE INTERSECTIONS AND DRIVEWAYS.
(2) THIS SPACING MAY BE REDUCED IN URBAN AREAS TO FIT ROADWAY CONDITIONS.

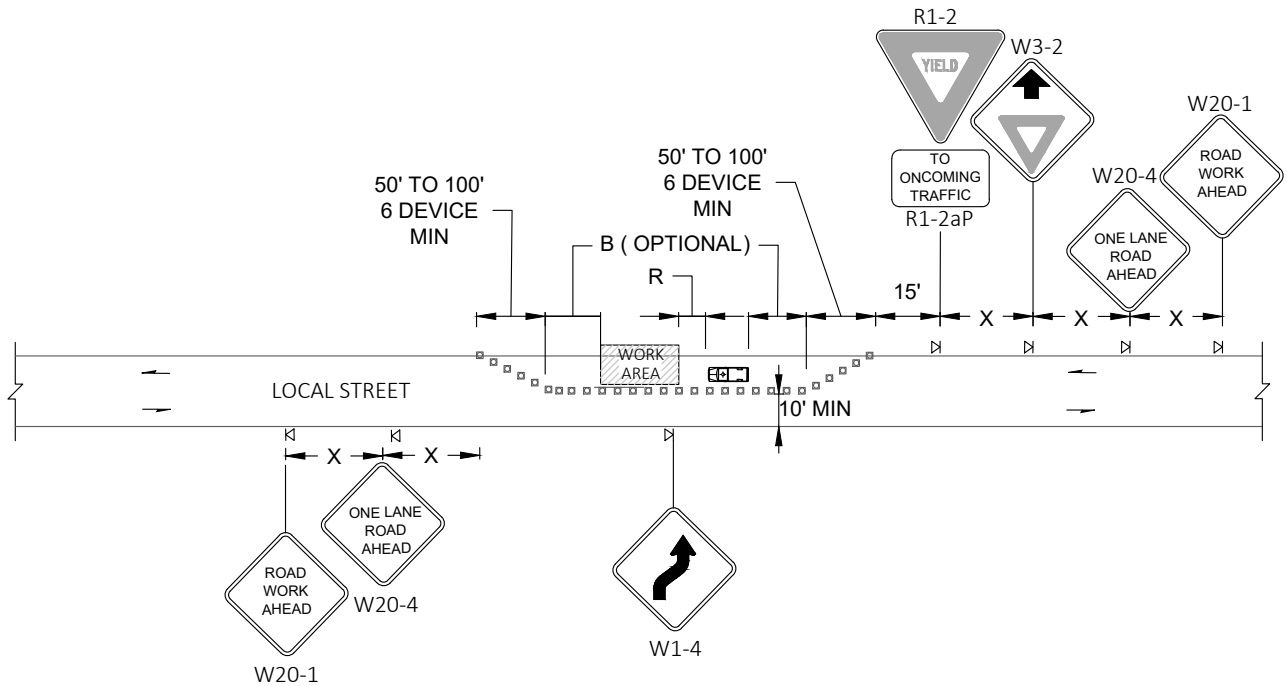
MINIMUM TAPER LENGTH = L (feet)				
LANE WIDTH (feet)	POSTED SPEED (mph)			
	25	30	35	40
10	105	150	205	270
11	115	165	225	295
12	125	180	245	320

BUFFER DATA				
LONGITUDINAL BUFFER SPACE = B				
SPEED (MPH)	25	30	35	40
LENGTH (feet)	155	200	250	305
BUFFER VEHICLE ROLL AHEAD DISTANCE = R				
PROTECTIVE VEHICLE - MAY BE A WORK VEHICLE STRATEGICALLY LOCATED TO SHIELD THE WORK AREA	NO SPECIFIED DISTANCE REQUIRED			
TRANSPORTATION ATTENUATOR - MINIMUM HOST VEHICLE WEIGHT 15,000 LBS. THE MAXIMUM WEIGHT SHALL BE IN ACCORDANCE WITH THE MANUFACTURERS RECOMMENDATION.	30 FEET MIN - 100 FEET MAX			



PUBLICATION DATE:	REVISION DATE: 08/24/2023
STANDARD DETAIL NUMBER: 915	SCALE: NOT TO SCALE

LANE SHIFT - THREE LANE ROADWAY WITH TWLTL



NOTES:

1. ALL SIGNS ARE BLACK ON ORANGE
2. EXTENDING THE CHANNELIZING DEVICE TAPER ACROSS SHOULDER IS RECOMMENDED.
3. NIGHT WORK REQUIRES ADDITIONAL ROADWAY LIGHTING AT FLAGGING STATIONS. SEE THE STANDARD SPECIFICATIONS FOR ADDITIONAL DETAILS.
4. SPACING FOR LOCAL ROADS ONLY.

LEGEND

- κ TEMPORARY SIGN LOCATION
- ▣ CHANNELIZING DEVICES
- ▣ PROTECTIVE VEHICLE

BUFFER DATA

LONGITUDINAL BUFFER SPACE = B				
SPEED (MPH)	25	30	35	40
LENGTH (feet)	155	200	250	305
BUFFER VEHICLE ROLL AHEAD DISTANCE = R				
PROTECTIVE VEHICLE		NO SPECIFIED DISTANCE REQUIRED		
MAY BE A WORK VEHICLE STRATEGICALLY LOCATED TO SHIELD THE WORK AREA				

CHANNELIZATION DEVICE SPACING (feet)

MPH	TAPER	TANGENT
35/ 45	10 to 20	60
25/ 30	10 to 20	40

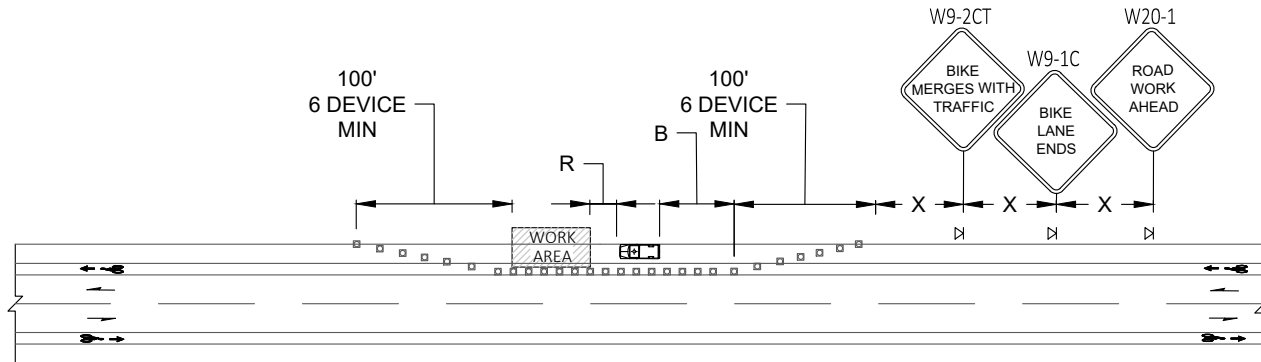
SIGN SPACING = X

LOCAL STREETS	25 MPH OR LESS	100'± (2)
(1) ALL SPACING MAY BE ADJUSTED TO ACCOMMODATE INTERSECTIONS AND DRIVEWAYS.		
(2) APPROPRIATE SIGHT DISTANCE IS REQUIRED.		



PUBLICATION DATE: REVISION DATE: **08/24/2023**
 STANDARD DETAIL NUMBER: **916** SCALE: **NOT TO SCALE**

ONE-LANE TWO-WAY TRAFFIC CONTROL - YIELD CONDITION



NOTES:

1. ALL SIGNS ARE BLACK ON ORANGE
2. EXTENDING THE CHANNELIZING DEVICE TAPER ACROSS SHOULDER IS RECOMMENDED.
3. NIGHT WORK REQUIRES ADDITIONAL ROADWAY LIGHTING AT FLAGGING STATIONS. SEE THE STANDARD SPECIFICATIONS FOR ADDITIONAL DETAILS.

LEGEND

- ⊠ TEMPORARY SIGN LOCATION
- ▣ CHANNELIZING DEVICES
- 🚚 PROTECTIVE VEHICLE
- 🚲 BICYCLE LANE SYMBOL

BUFFER DATA

LONGITUDINAL BUFFER SPACE = B				
SPEED (MPH)	25	30	35	40
LENGTH (feet)	155	200	250	305
BUFFER VEHICLE ROLL AHEAD DISTANCE = R				
TRANSPORTABLE ATTENUATOR		NO SPECIFIED DISTANCE REQUIRED		
MINIMUM HOST VEHICLE WEIGHT 15,000 LBS. THE MAXIMUM WEIGHT SHALL BE IN ACCORDANCE WITH THE MANUFACTURERS RECOMMENDATION		NO SPECIFIED DISTANCE REQUIRED		
PROTECTIVE VEHICLE		NO SPECIFIED DISTANCE REQUIRED		
MAY BE A WORK VEHICLE STRATEGICALLY LOCATED TO SHIELD THE WORK AREA		NO SPECIFIED DISTANCE REQUIRED		

CHANNELIZATION DEVICE SPACING (feet)

MPH	TAPER	TANGENT
35/ 45	10 to 20	60
25/ 30	10 to 20	40

SIGN SPACING = X

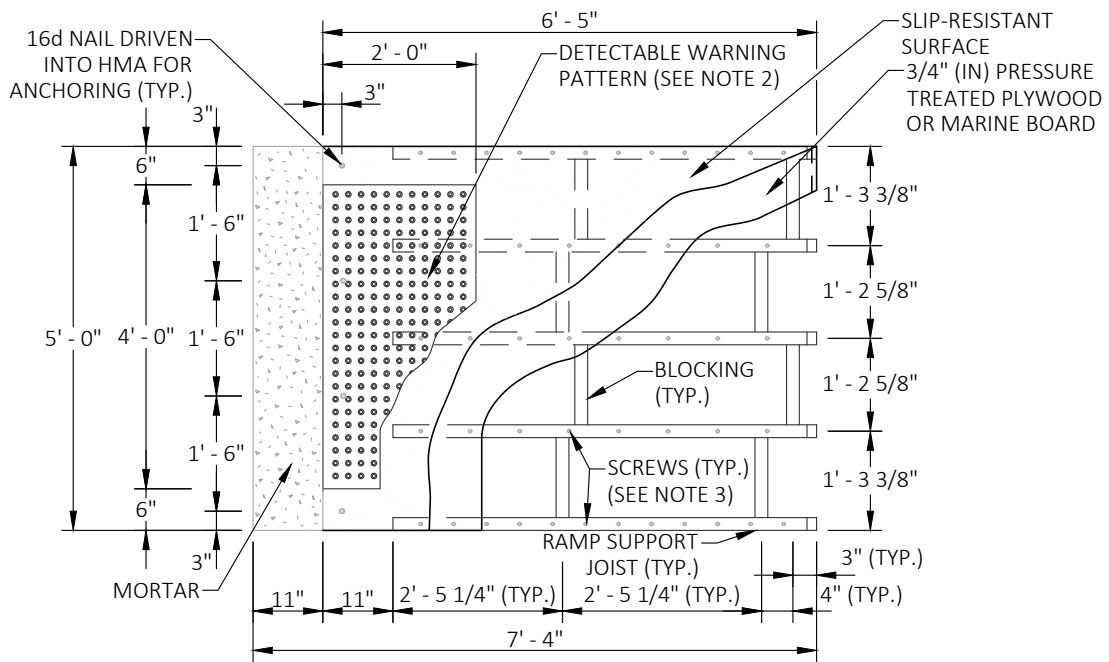
RURAL ROADS & URBAN ARTERIALS	35 / 40 MPH	350' ±
RURAL ROADS, URBAN ARTERIALS, RESIDENTIAL & BUSINESS DISTRICTS	25 / 30 MPH	200' ± (2)
URBAN STREETS	25 MPH OR LESS	100' ± (2)

(1) ALL SPACING MAY BE ADJUSTED TO ACCOMMODATE INTERSECTIONS AND DRIVEWAYS.
 (2) THIS SPACING MAY BE REDUCED IN URBAN AREAS TO FIT ROADWAY CONDITIONS.

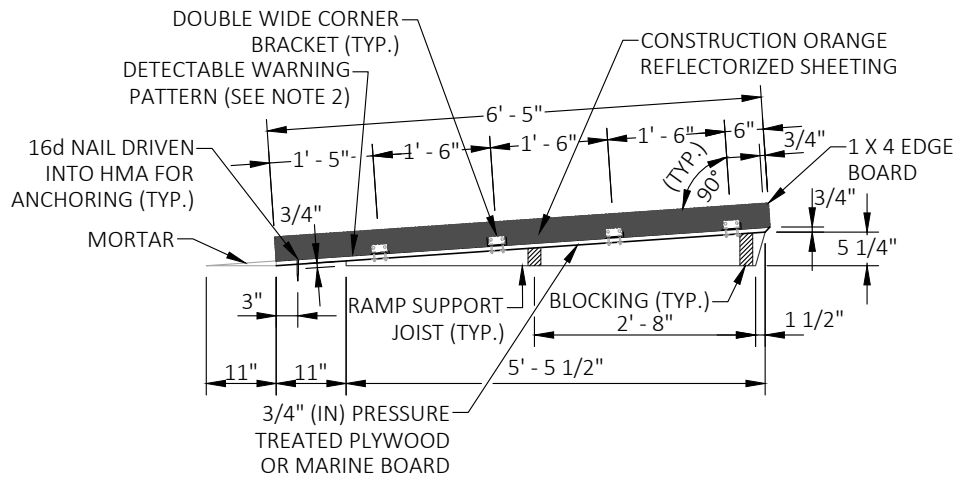


PUBLICATION DATE:	REVISION DATE: 08/24/2023
STANDARD DETAIL NUMBER: 917	SCALE: NOT TO SCALE

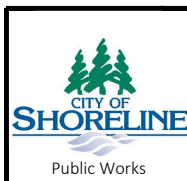
BIKE LANE TRAFFIC CONTROL



TOP VIEW
RAMP DETAIL

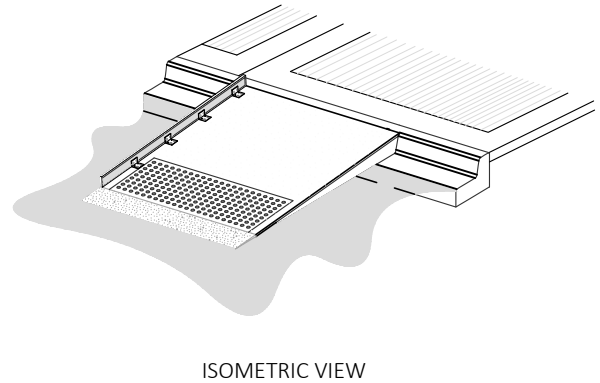
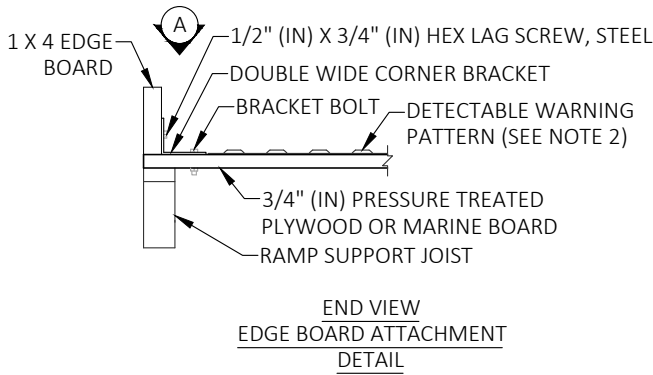
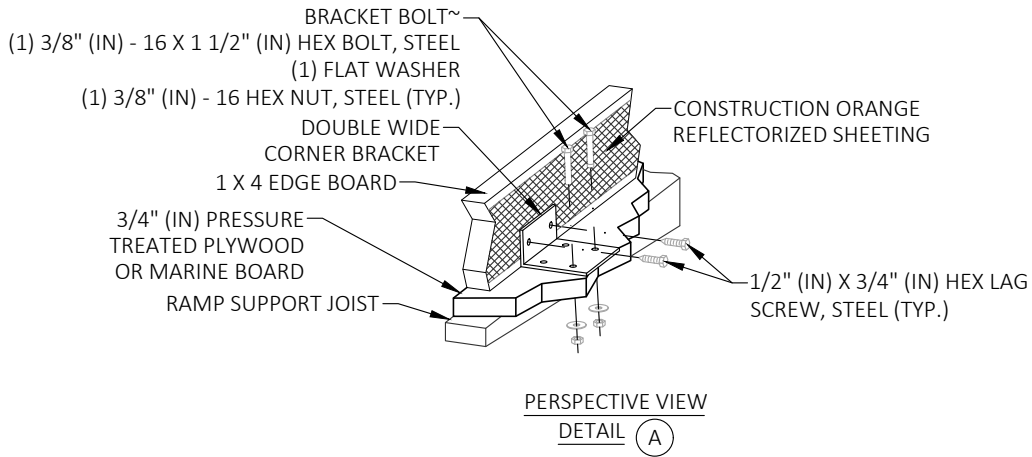


SIDE VIEW
RAMP AND EDGE BOARD



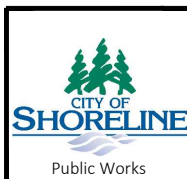
PUBLICATION DATE:	REVISION DATE: 08/24/2023
STANDARD DETAIL NUMBER: 918	SCALE: NOT TO SCALE

TEMPORARY PEDESTRIAN RAMP
1 OF 2



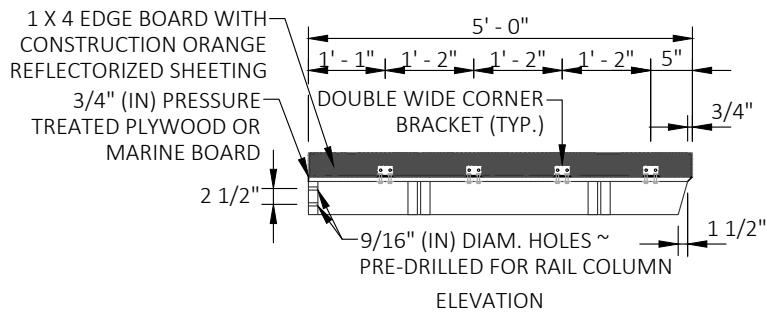
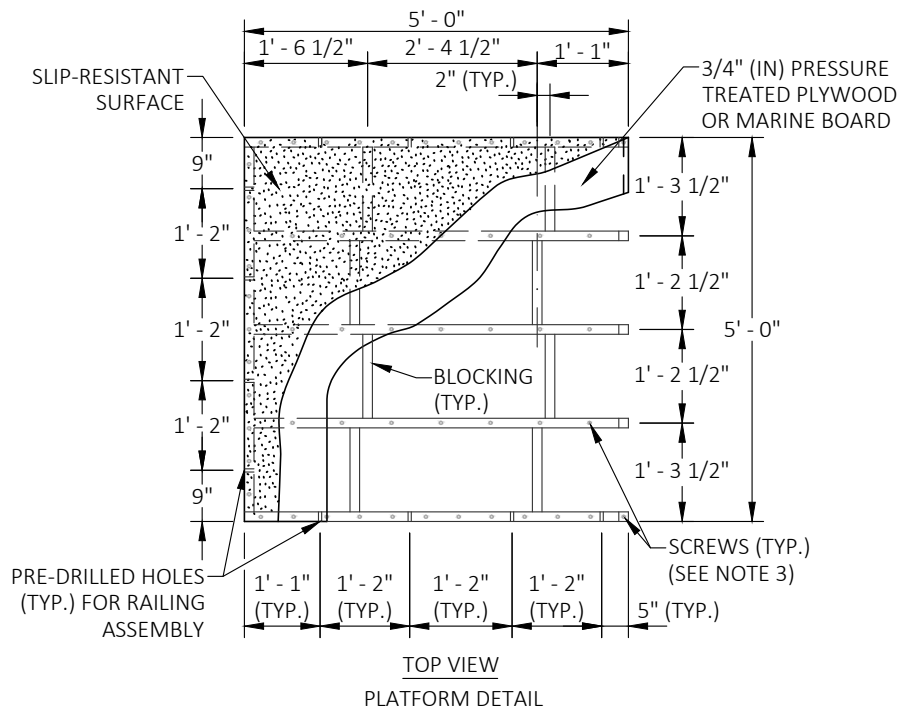
NOTES:

1. THIS DESIGN ASSUMES OPTIMAL CONDITIONS AND A STANDARD CURB HEIGHT OF 6" (IN). INSTALLED RAMPS SHALL BE NO STEEPER THEN 12H : 1V, AND SHALL HAVE A CROSS-SLOPE OF 2% OR LESS. USE SHIMS OR GROUT AS REQUIRED TO ADJUST FOR EXISTING CONDITIONS AND TO PREVENT ROCKING. SHIMS SHALL BE NO HIGHER THAN 1" (IN), AND SHALL BE SECURED TO THE RAMP. FOR CURBS SHORTER THAN 6" (IN), INSTALL A RAMP ON THE SIDEWALK, NO STEEPER THAN 12H : 1V, MADE OF GROUT OR AS APPROVED BY THE ENGINEER. ADJUSTMENTS TO THE RAMP DIMENSIONS SHOWN MAY BE REQUIRED TO MATCH EXISTING CONDITIONS.
2. THE DETECTABLE WARNING PATTERN SHALL BE INSTALLED ONLY WHEN THE INTENT IS TO GUIDE PEDESTRIANS DIRECTLY ACROSS THE ROADWAY (CROSSWALK). SEE WSDOT STANDARD PLAN F-45.10 FOR DETAILS.
3. SCREWS SHALL BE USED TO SECURE THE RAMP SURFACE, SPACING SHALL BE IN ACCORDANCE WITH THE CURRENT BUILDING CODE.
4. USE A SLIP-RESISTANT TREATMENT FOR SURFACE OF RAMP.
5. ALL FASTENERS SHALL BE GALVANIZED.
6. DO NOT INSTALL A HAND RAILING IF USING THE EDGE BOARD OPTION.



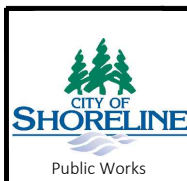
PUBLICATION DATE:	REVISION DATE: 08/24/2023
STANDARD DETAIL NUMBER: 918	SCALE: NOT TO SCALE

TEMPORARY PEDESTRIAN RAMP
2 OF 2



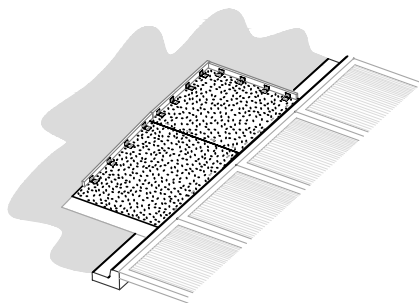
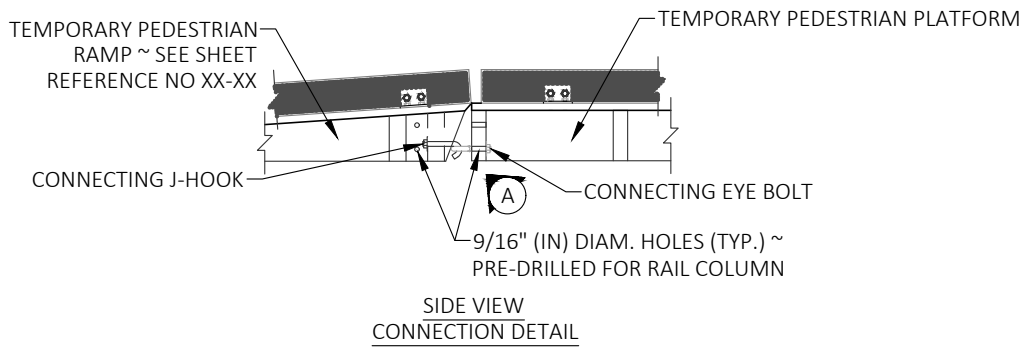
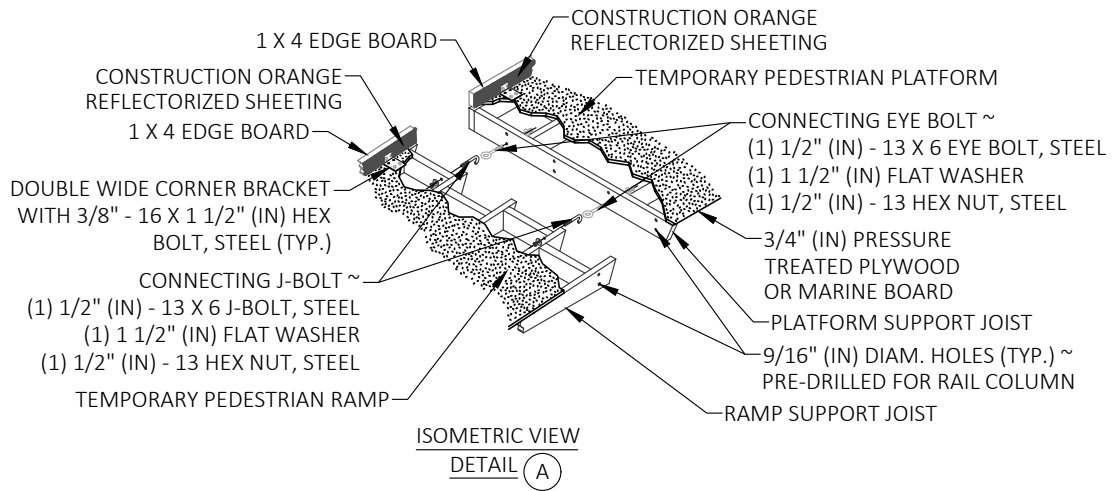
NOTES:

1. ALL HOLES SHOWN SHALL BE DRILLED TO FACILITATE RE-USE AND FLEXIBLE EXPANSION.
2. THIS DESIGN ASSUMES OPTIMAL CONDITIONS AND A STANDARD CURB HEIGHT OF 6" (IN). INSTALLED RAMPS SHALL BE NO STEEPER THEN 12H : 1V, AND SHALL HAVE A CROSS-SLOPE OF 2% OR LESS. USE SHIMS OR GROUT AS REQUIRED TO ADJUST FOR EXISTING CONDITIONS AND TO PREVENT ROCKING. SHIMS SHALL BE NO HIGHER THAN 1" (IN), AND SHALL BE SECURED TO THE RAMP AND/OR PLATFORM. FOR CURBS SHORTER THAN 6" (IN), INSTALL A RAMP ON THE SIDEWALK, NO STEEPER THAN 12H : 1V, MADE OF GROUT OR AS APPROVED BY THE ENGINEER. ADJUSTMENTS TO THE PLATFORM DIMENSIONS SHOWN MAY BE REQUIRED TO MATCH EXISTING CONDITIONS.
3. SCREWS SHALL BE USED TO SECURE THE RAMP SURFACE, SPACING SHALL BE IN ACCORDANCE WITH THE CURRENT BUILDING CODE.
4. USE A SLIP-RESISTANT TREATMENT FOR SURFACE OF RAMP.
5. ALL FASTENERS SHALL BE GALVANIZED.

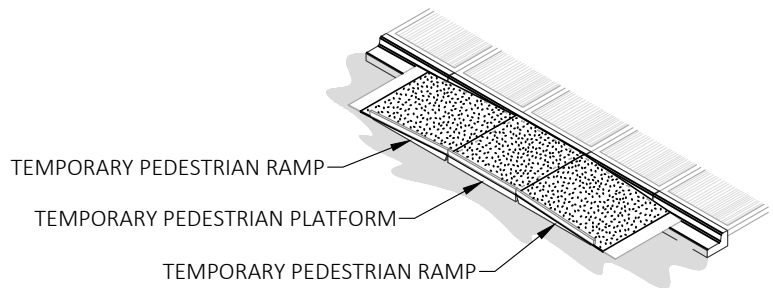


PUBLICATION DATE:	REVISION DATE: 08/24/2023
STANDARD DETAIL NUMBER: 919	SCALE: NOT TO SCALE

**TEMPORARY PEDESTRIAN
PLATFORM 1 OF 2**



ISOMETRIC VIEW
 SINGLE RAMP



ISOMETRIC VIEW
 DUAL RAMP



PUBLICATION DATE:

REVISION DATE: **08/24/2023**

STANDARD DETAIL NUMBER: **919**

SCALE: **NOT TO SCALE**

**TEMPORARY PEDESTRIAN
 PLATFORM 2 OF 2**