

Coming Soon



2021 Bituminous Surface Treatment Project

July 14, 2021

Introductions

City of Shoreline

Kristin Terpstra – Project Manager

Bob Earl – Engineering Manager

Tricia Juhnke – City Engineer

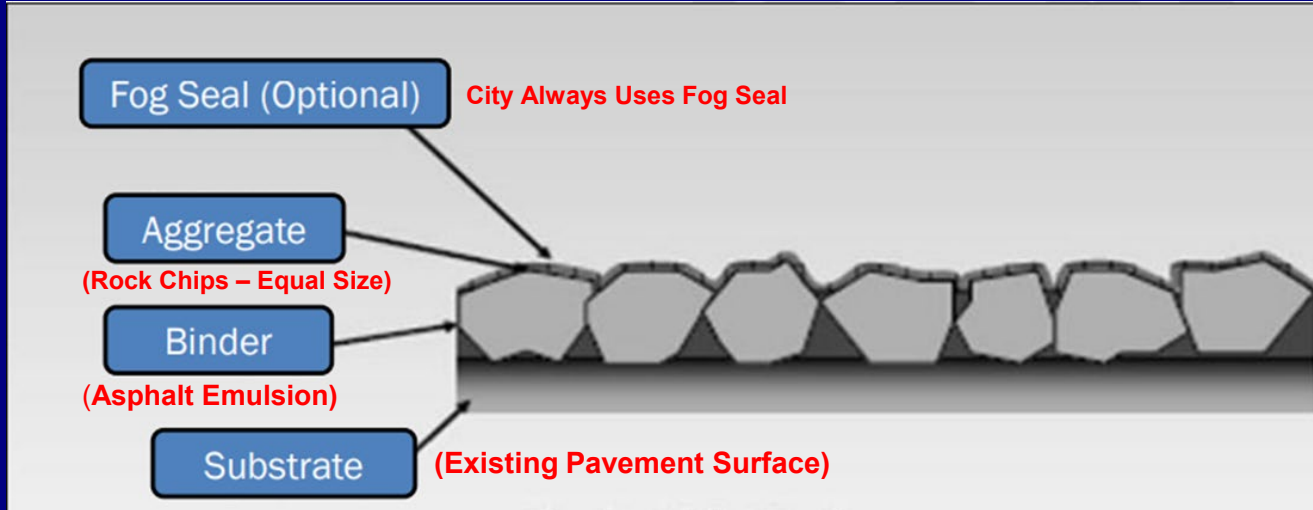


Overview

- What is Bituminous Surface Treatment?
- What to expect before, during & after const.
- Project Schedule.
- Who to contact during construction.
 - Concerns, Assistance, Questions
- Questions & Answers

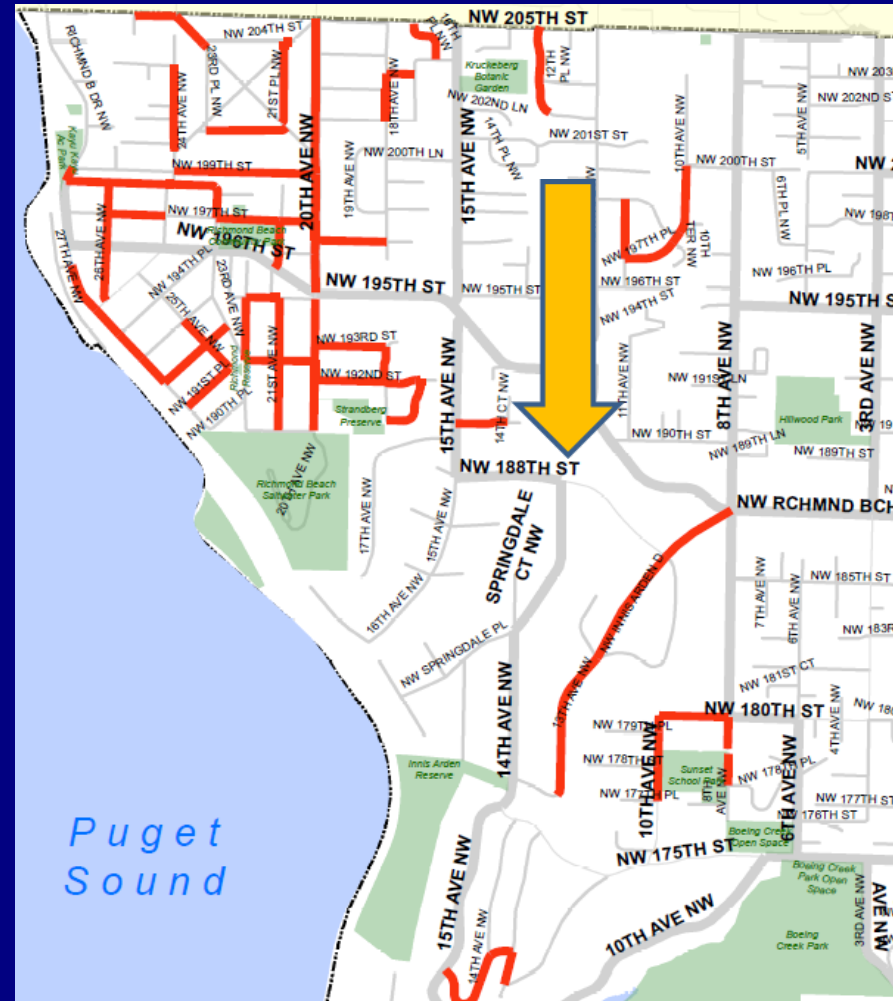
What is B.S.T. ?

- Pavement Preservation – Not a Structural Improvement
- Protects Pavement Surface From Water & Sun
- Helps Eliminate Potholes
- Cost Effective – 80% less than hot mix overlay
- Extends Pavement Life by 7- 10 Years



What to Expect

- Start of Construction Mid – July
- Contractor Will Work North to South
- 20 To 30 Days to Complete Work
- Completion in Late August



Before Construction

- **1 Week Before**
 - Construction Notices
 - Final Crack Sealing & Patching
- **1 to 2 Days Before**
 - No Parking Signs
 - Equipment Arrives
 - Remove Pavement Markings
 - Thorough Street Sweeping



During Construction on Your Street

Asphalt Emulsion – Rock – Roll – Sweep, Sweep, Sweep

Usually Completed in One Day

Asphalt Emulsion Sprayer

Chip Spreader & Dump Truck

Rubber Tire Rollers

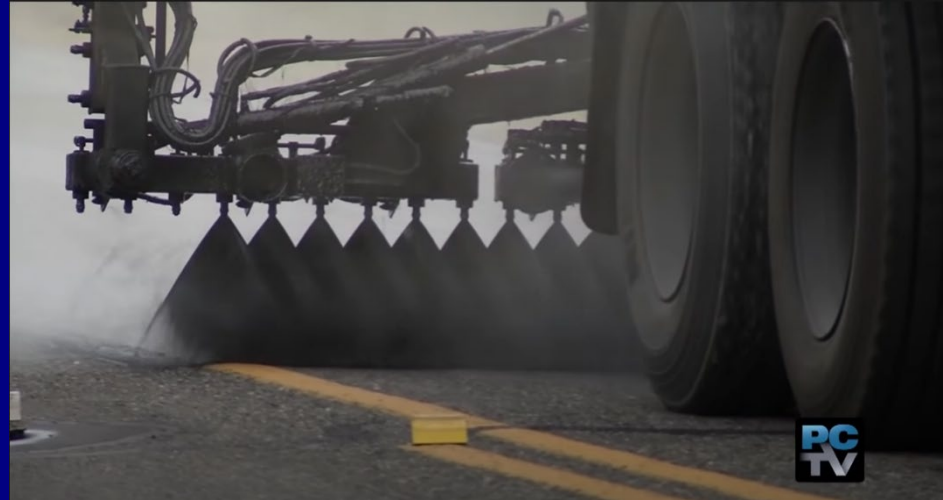


During Construction on Your Street



Step 1 – Apply Asphalt Emulsion

- Seals Pavement Surface
- Cements Chips to Pavement



During Construction on Your Street



Step 2 – Spread Aggregate Chips

- Provides Traction Surface
- Provides Uniform Appearance



During Construction on Your Street



Step 3 – Roll Aggregate Chips

- Embeds Chips In Emulsion
- Makes Single, Uniform Layer



Drivable 1 Hour After Application
Or In The Untreated Lane

During Construction on Your Street



Step 4 – Sweep, Sweep, Sweep

- Collect All Loose Aggregate
- Streets, Sidewalks, Driveways
- Remove Chips From Work Site



During Construction on Your Street

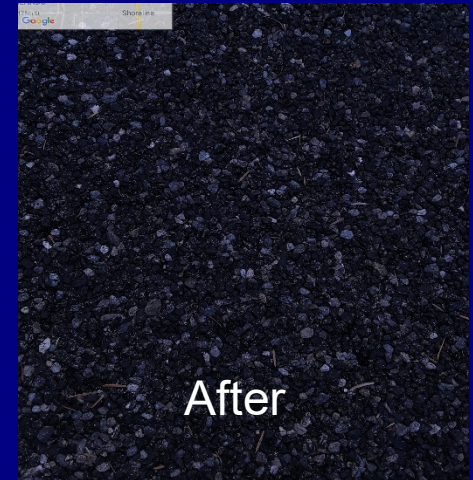


Drivable In 2 to 4 Hours



Step 5 – Apply Fog Seal

- 4 - 7 Days After Chip Application
- Seals Aggregate Chip
- Prevents Chip Shedding



After Construction



Step 6 – Pavement Markings

1 - 2 Days After Fog Seal

Sweep, Sweep, Sweep, Sweep



City Contact Information

Before and After Construction:

Kristin Terpstra, Project Manager
Phone 206.801.2474
Email kterpstra@shorelinewa.gov

Bob Earl, Engineering Manager
Phone 206.801.2479
Email bearl@shorelinewa.gov

During Construction:

Mark Fry, Engineering Inspector
Phone 206.801.2426
Email mfry@shorelinewa.gov

Mike Almarroof, Engineer 1
Phone 206.801.2477
Email malmarroof@shorelinewa.gov

Damage Claims: Phone 425.455.1150
Email info@DoolittleLLC.com



QUESTIONS



2021 Bituminous Surface Treatment Project



Webinar Summary & Q&A
Project FAQ & Contact Information
Translation Assistance

Go to:

shorelinewa.gov/BST

