

- NOTES:**
- SEE TREE PROTECTION PLANS. ALL WORK IN TREE CRITICAL ROOT ZONE (CRZ) SHALL BE DONE BY HAND. INSTALL ALL PLANTS IN THE CRZ INDIVIDUALLY BY HAND.
  - SEE CIVIL PLANS FOR SITE PREPARATION, PAVING, GRADING, DRAINAGE, AND UTILITIES. DETERMINE LOCATION OF UNDERGROUND UTILITIES AND PERFORM WORK IN A MANNER THAT WILL AVOID DAMAGE.
  - ALL PLANTED AREAS TO RECEIVE MULCH PER DETAILS AND SPECIFICATIONS.
  - SEE SHEET L-1 FOR PARK LAYOUT PLAN.
  - SEE SHEET L-2 FOR SOIL AMENDMENT PLAN AND TEMPORARY PLANT ESTABLISHMENT FENCING.
  - SEE SHEET L-4 FOR PLANT SCHEDULES.

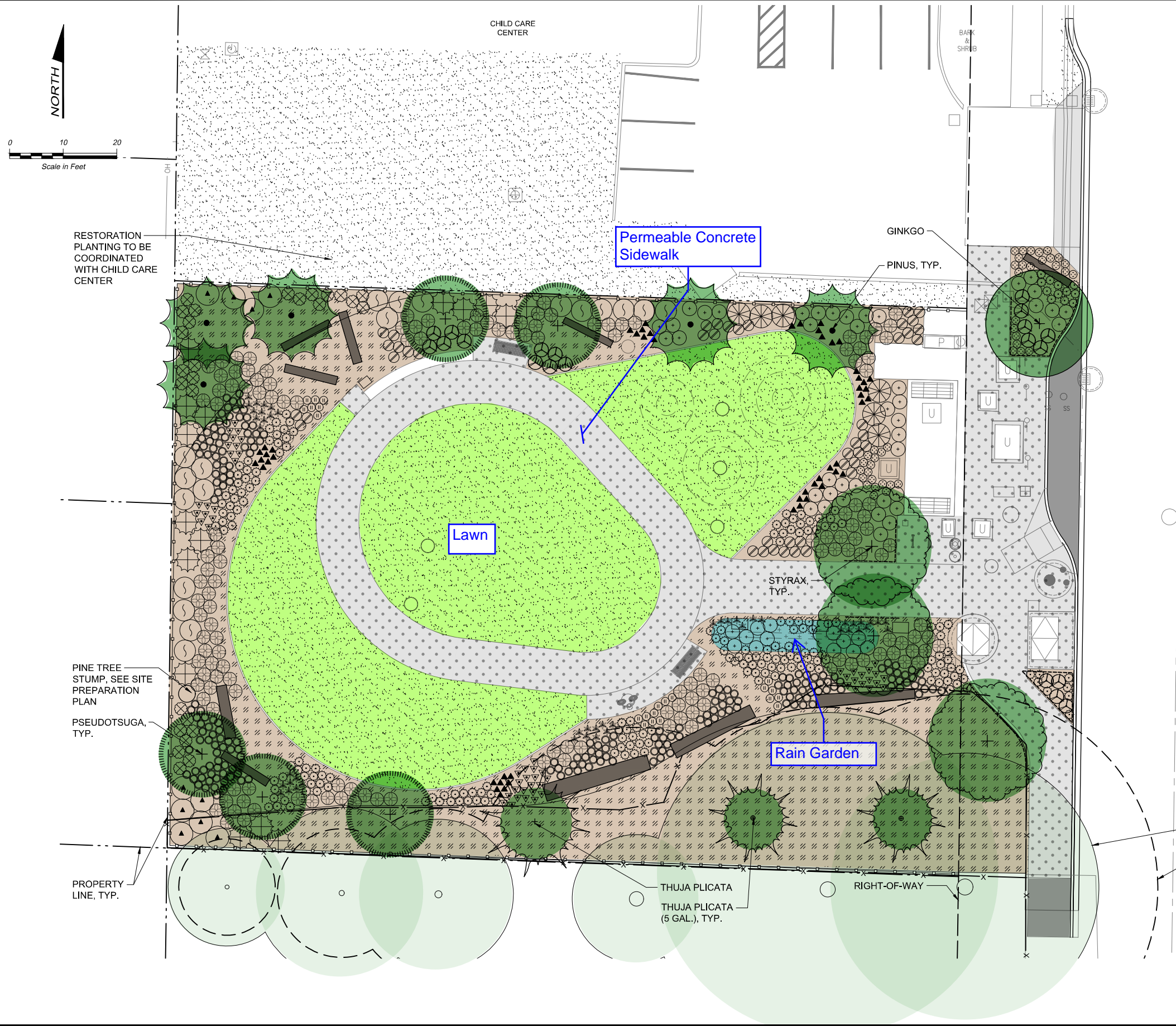
**LEGEND - SEE PLANT SCHEDULE**

- x — TREE PROTECTION FENCE, SEE NOTE 1.
- ROOT BARRIER PER SHORELINE STANDARD DETAIL #308
- [Stippled Pattern] ECO-LAWN
- [Hatched Pattern] SCREENED WOOD CHIP MULCH
- [Solid Grey] LANDSCAPE LOGS - MATERIAL FROM PINE REMOVED PER SITE PREPARATION PLANS AND DOUGLAS FIR STOCKPILED AT PAN TERRA SITE (N 185TH ST AND DAYTON AVE N)

**PLANT KEY**  
(SEE SHEET L-4 FOR FULL PLANT SCHEDULE)

Symbol	SCIENTIFIC NAME
[Symbol]	CORNUS SERICEA 'KELSEY'
[Symbol]	GAULTHERIA SHALLOM
[Symbol]	MAHONIA AQUIFOLIUM 'COMPACTA'
[Symbol]	RIBES SANGUINEUM 'KING EDWARD VII'
[Symbol]	SPIRAEA BETULIFOLIA 'TOR'
[Symbol]	SYMPHORICARPOS ALBUS
[Symbol]	VACCINIUM OVATUM
[Symbol]	AQUILEGIA FORMOSA
[Symbol]	BLECHNUM SPICANT
[Symbol]	DICENTRA FORMOSA 'BACCHANAL'
[Symbol]	GYMNOCARPIUM DISJUNCTUM
[Symbol]	IRIS DOUGLASIANA
[Symbol]	JUNCUS EFFUSUS 'QUARTZ CREEK'
[Symbol]	MAHONIA REPENS
[Symbol]	OXALIS OREGANA 'WINTERGREEN'
[Symbol]	PENSTEMON CARDWELLII
[Symbol]	POLYSTICHUM MUNITUM

10TH AVE NE



Path: T:\70152\_S\_Shoreline Stormwater PS 26\PRODUCTION\CADD\PLP\_Filename: 70152\_L2\_L3\_PLANT\_SCHEDULE\_Plot date: Apr 23, 2021 10:02:34am CAD User: idamaske. Xref Filename: X20-10647\_TB | 70152\_P\_LP | X20-10647\_Extopo | X20-10647\_Prop Site | 70152\_X\_TREE CRZ | 70152\_P\_LP\_PLANTING | X20-10647\_Prelim |

**Call 48 Hours Before You Dig**  
1-800-424-5555  
UNDERGROUND SERVICE

**Preliminary  
90% Review Set**  
Not For Construction  
04-2021



No.	Revision	Date	By	App'd

**bhc**  
CONSULTANTS  
BHC Consultants, LLC  
1601 Fifth Avenue, Suite 500  
Seattle, Washington 98101  
206.505.3400  
206.505.3406 (fax)  
www.bhcconsultants.com

**TOOLE**  
DESIGN  
720 3RD AVENUE, SUITE 2020  
SEATTLE, WA 98104  
PHONE: (206) 297-1601  
www.tooledesign.com

Designed: T. Damaske  
Drawn: T. Damaske  
Checked: K. Ray  
Scale:  
As Shown  
One Inch at Full Scale  
If Not One Inch Scale Accordingly

**CITY OF SHORELINE**  
Public Works - Surface Water Utility  
17500 Midvale Avenue North  
Shoreline, WA 98133  
Phone: 206-801-2400 Fax: 206-801-2785

**PUMP STATION 26 IMPROVEMENTS PROJECT**  
**PLANTING PLAN**

Drawing: **L-3**  
Sheet: **X** Or **X**  
File: 70152\_L2\_L3  
Date: April 23, 2021