

# State of the City

MAYOR WILL HALL

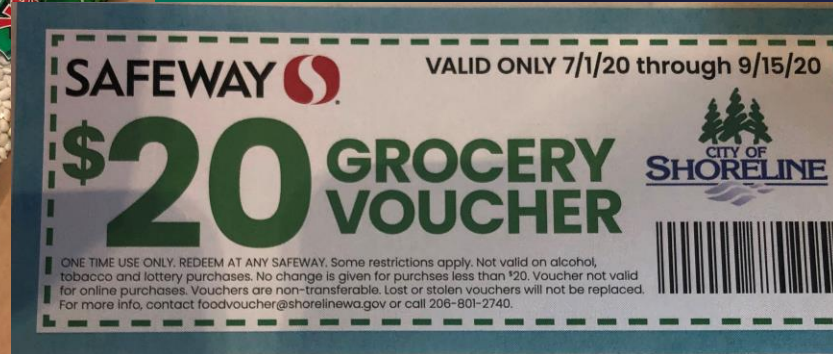


# COVID Response and Recovery

# City Business Continues



# Food Assistance to Families in Need



# Small Business Support Program

- \$775,000 in grants to Shoreline small businesses
- City will continue to help businesses navigate federal, state, and local assistance

# Remote Learning Camps



# Impact of COVID on City's Budget

# Federal Stimulus

- \$2.4 million from CARES Act
- \$7.5 million from ARP Act



# City's Financial Condition

- AA+ Bond Rating
- Standard and Poor's highest assessment for financial management

# Structural Imbalance

- Property tax (33% of City revenues) capped at 1% increase.
- Cost of providing services increases at a rate higher than 1% year over year.

# Levy Lid Lift

- 2010 – Voter approved (56%) reset levy rate to \$1.48 and linked to inflation
- 2016 – Voter approved (67%) reset levy rate to \$1.39 and linked to inflation

# Racism and Homelessness

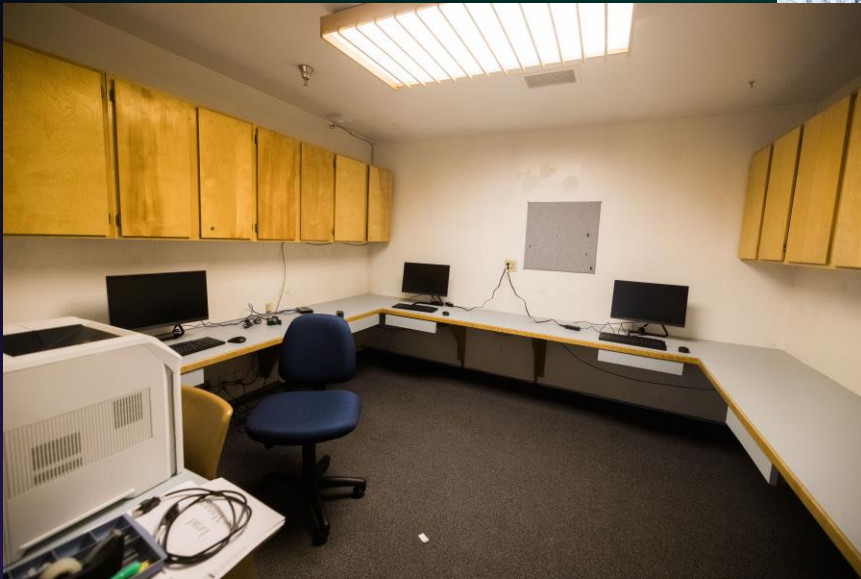
# Resolution 467: Building an Anti-Racist Community

- Work with community members to co-create a vision of an anti-racist community.
- Facilitate community listening sessions.

# Homelessness in North King County

- 2020 "Point-In-Time" count found 260 people experiencing homelessness in North King County, with 56 unsheltered.
- No 24/7 shelter or shelter offering enhanced services in all North King County.

# North King County Enhanced Shelter



# Emergency Severe Weather Shelter



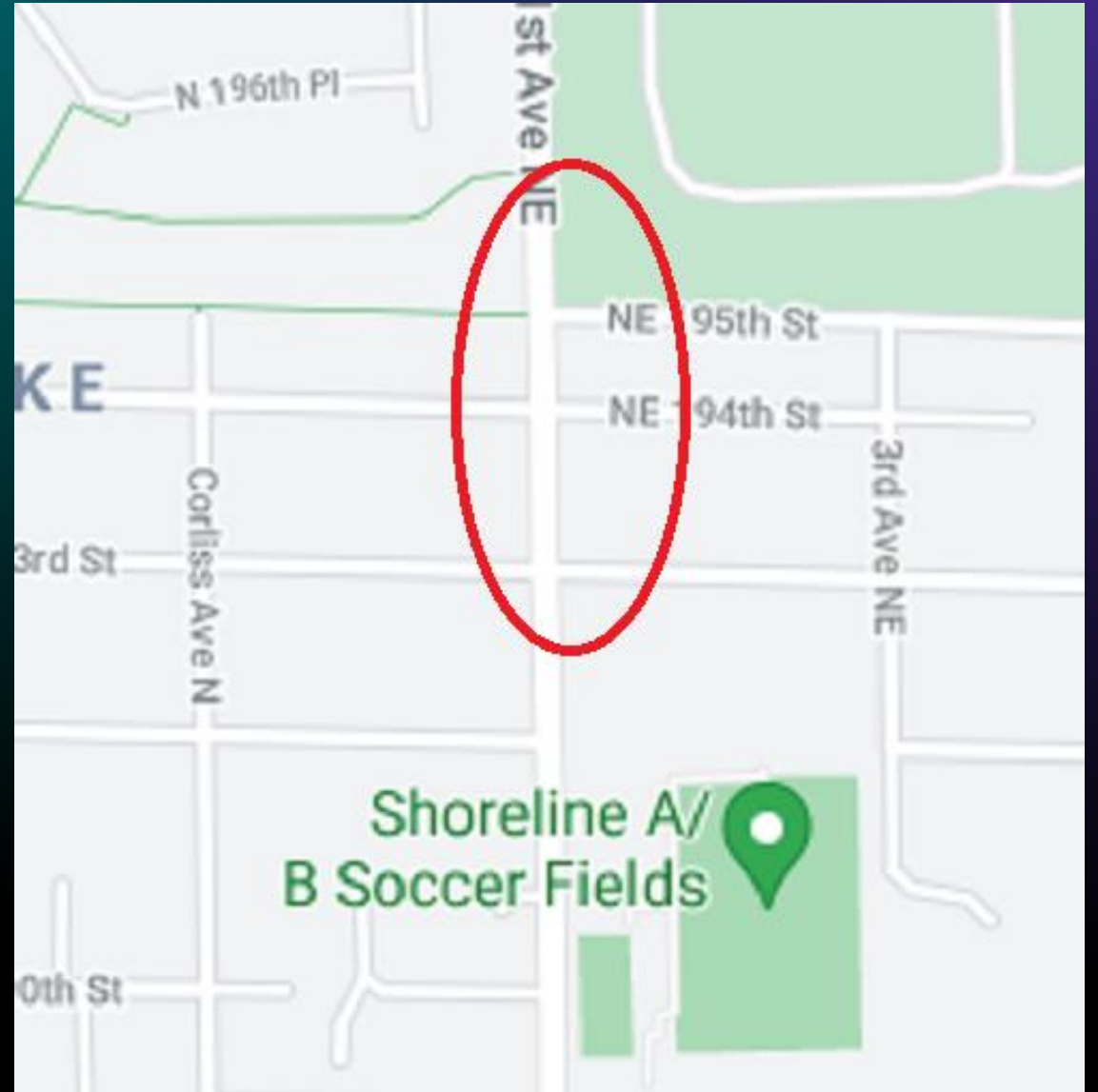


Looking Ahead

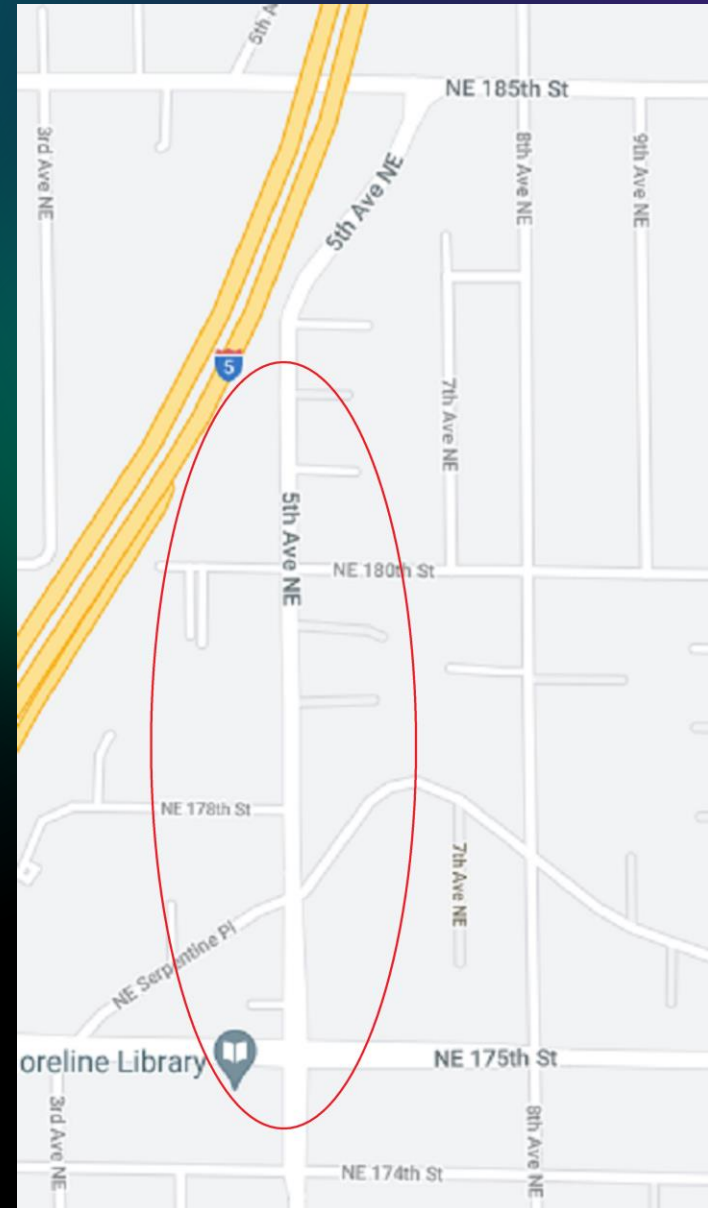
# Proposition 1: Park Improvements and Park Land Acquisition

Active registered voters in Shoreline	Voters who voted in last general election	40% valid votes cast needed to validate	Votes cast in April 27 special election
40,105	35,231	14,092	13,928

1<sup>st</sup> Avenue NE  
between  
NE 193<sup>rd</sup> and  
NE 195<sup>th</sup>  
Streets



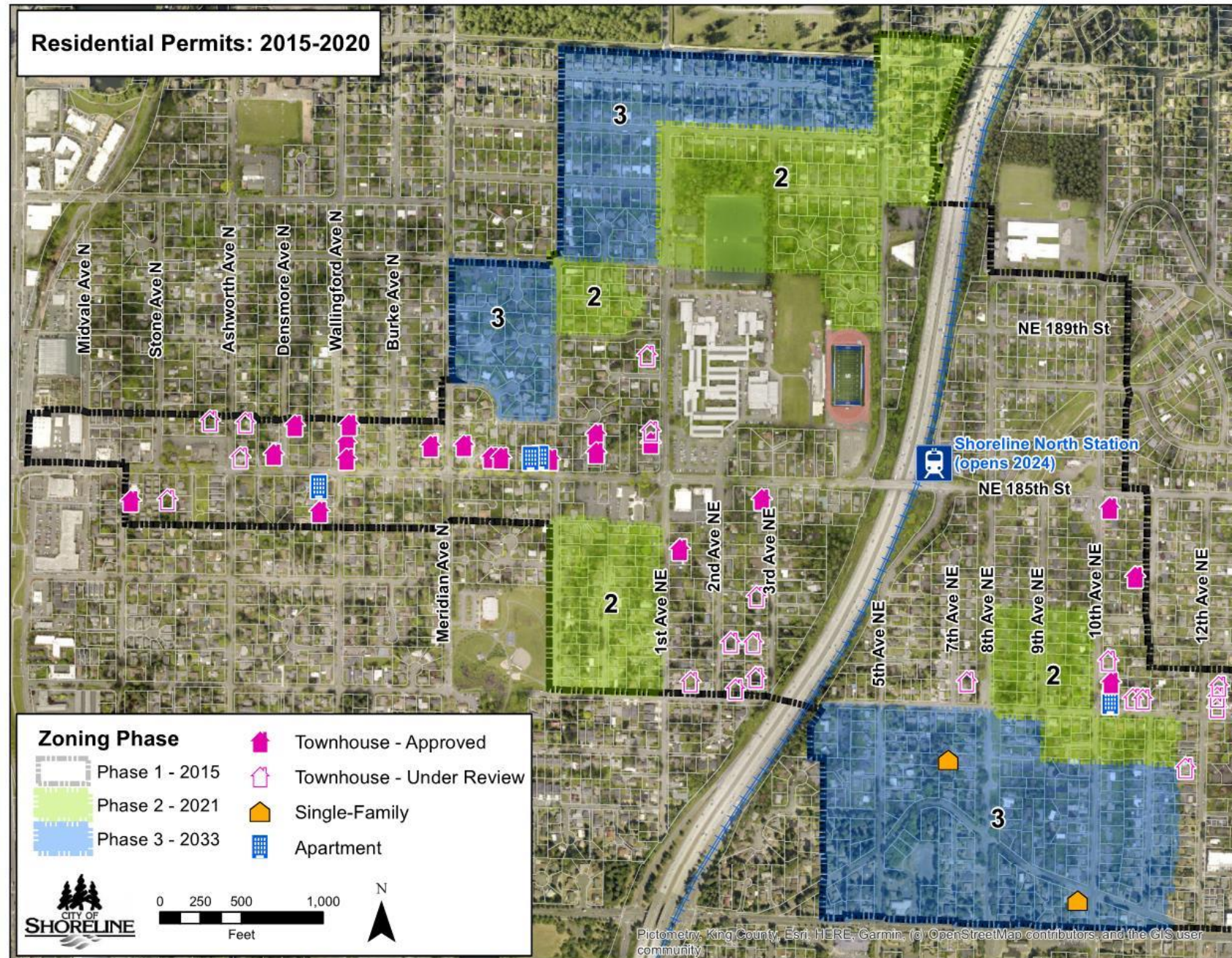
5<sup>th</sup> Avenue NE  
between  
NE 175<sup>th</sup> and  
NE 182<sup>nd</sup>  
Streets



# Economic Development



# 185<sup>th</sup> Street Station Subarea – Residential Permits 2015-2020



# BUILDING A SUSTAINABLE COMMUNITY

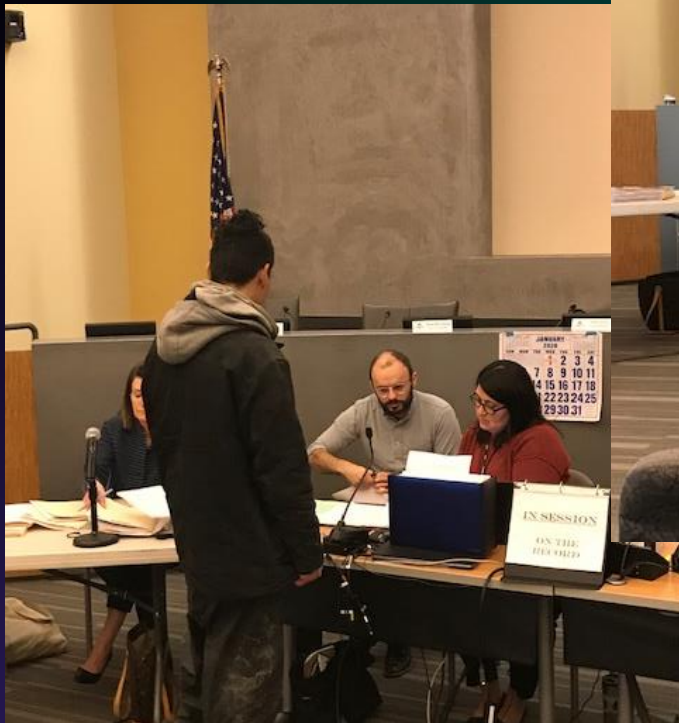
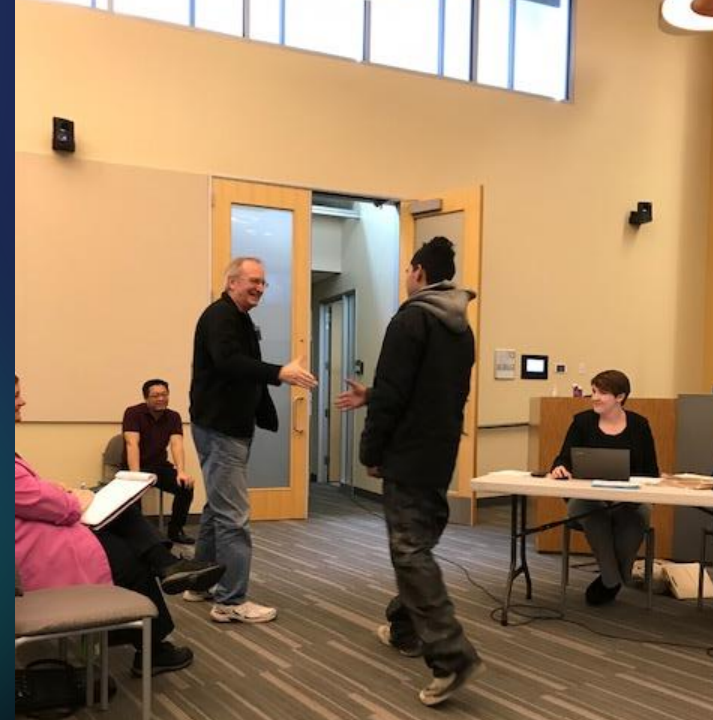
- Committed to reducing greenhouse gas emissions:
  - 50% below 2007 levels by 2030
  - 80% below 2007 levels by 2050

# BUILDING A SUSTAINABLE COMMUNITY

- Since 2006, 680 Built Green certified residential units added
- In 2020, 50% of waste diverted from landfills, 6% increase from 2016



# Community Court



# Resource Center





CITY OF  
**SHORELINE**

