

2020 Sustainability Report

April 26, 2021

Autumn Salamack
Environmental Services Coordinator



Sustainable Shoreline Focus Areas



Climate,
Water &
Energy

Materials,
Food & Waste

Transportation

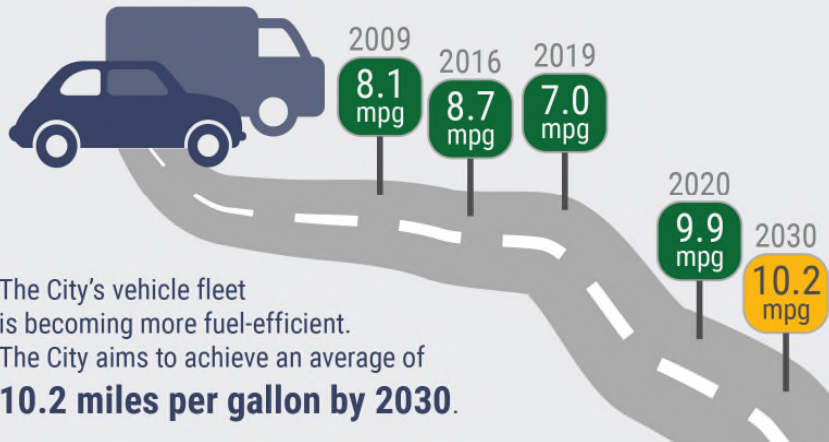
Trees, Parks &
Ecosystems

Resilient
Communities

2020 Progress

- 22 sustainability indicators
 - 4 met in 2019
 - 11 showed improvement in 2020

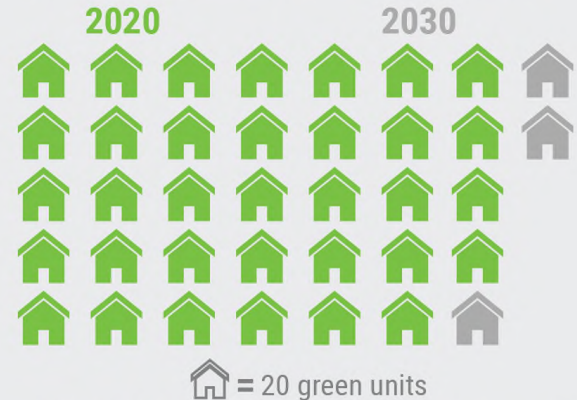
MUNICIPAL FLEET ENERGY USE



The City's vehicle fleet is becoming more fuel-efficient. The City aims to achieve an average of **10.2 miles per gallon by 2030.**



GREEN RESIDENTIAL BUILDINGS



Since 2006, Shoreline has added over 680 green residential units to the community, and aims to grow to **over 700 by 2030.**

Climate, Water & Energy

- Virtual climate action programming
- Green building growth



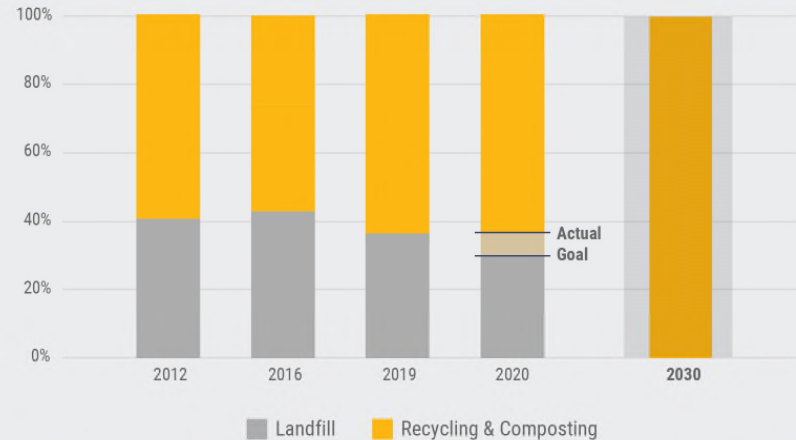
Materials, Food & Waste

- Food service outreach program
- Recycling guide and quiz
- Multifamily Waste Wise program



REDUCE, REUSE, RECYCLE

Shoreline sent less waste to the landfill in 2020 but generated more waste overall. There's more work to do to achieve the City's goal of **zero waste by 2030.**



In 2020, single-family households diverted 64% of their waste from the landfill. While we didn't meet our goal of **70% diversion citywide by 2020**, composting and recycling can help us achieve our zero waste goal.

Transportation

- Enhanced bicycle parking
- More EV charging stations
- New sidewalks



Trees, Parks & Ecosystems

- 495 trees planted
- Salmon-Safe progress
- Pollution prevention, stormwater activities



ACCESS TO PARKS

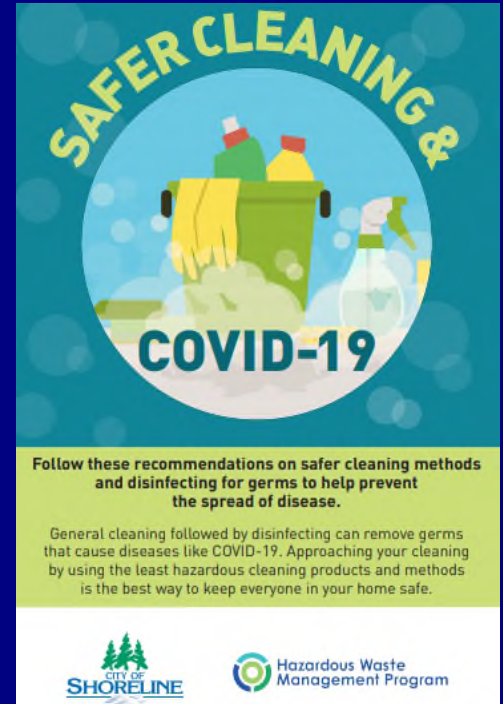
Shoreline offers residents 475 acres of parkland for recreation and enjoyment of nature. The City aims to add

5 new acres of parkland by 2023.



Resilient Communities

- Climate Impacts & Resiliency Study
- 3 EnviroStars businesses
- 4 Environmental Mini-Grants
- Safer cleaning brochure



2021 Activities

- GHG Emissions Inventory
- Climate Action Plan Update
- Safer Cleaning Workshops
- Multifamily Waste Reduction & Diversion Programs
- Compost Program & Incentives for Businesses
- Residential Compost Education Program



Questions?

