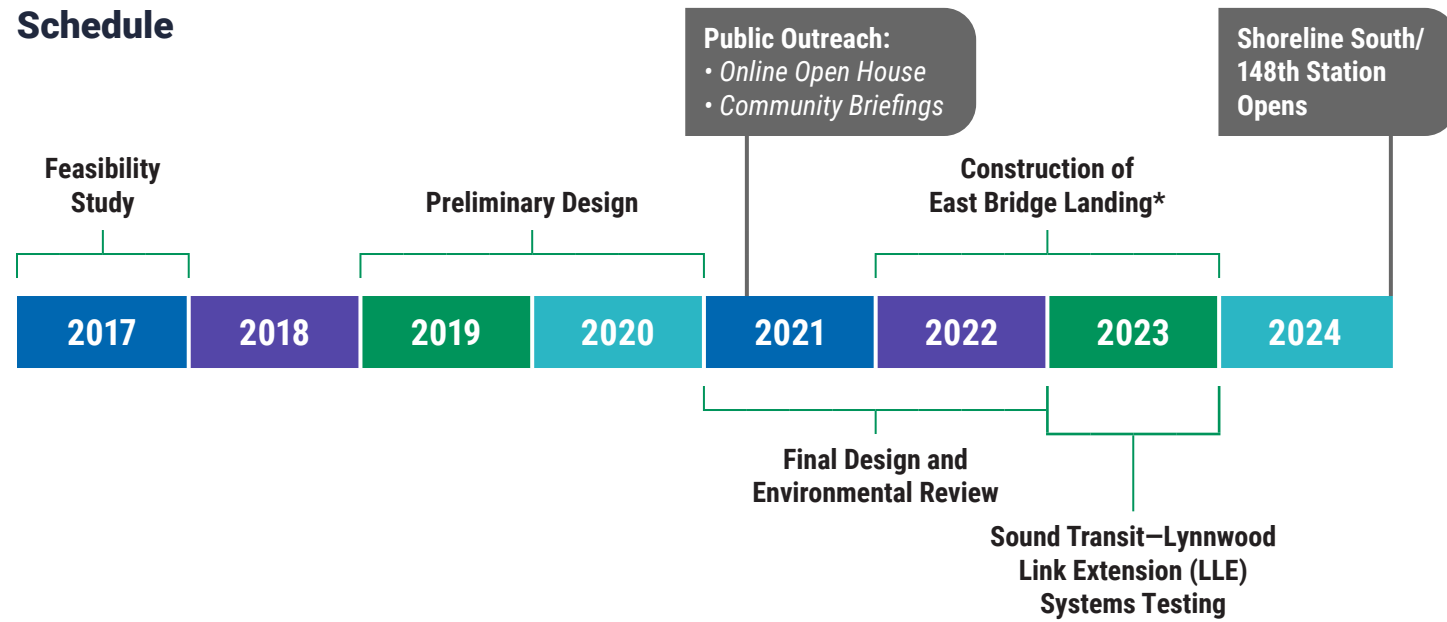


Schedule



* Current funding will support construction of the East Bridge Landing. The City will continue to pursue additional funding needed to construct the Bridge Span and West Trail Connection.

Public Outreach

Community members will be able to provide more input on the project in spring 2021 through an online open house and public meeting.

Contact Information

Lea Bonebrake, P.E.,
lbonebrake@shorelinewa.gov
City of Shoreline, Project Manager
206-801-2475

FOR ADDITIONAL PROJECT INFORMATION, VISIT

shorelinewa.gov/148thbridge

Translation Services

If you would like to communicate with the City of Shoreline or review a document in another language, please send your request along with your contact information to clk@shorelinewa.gov or call 206-801-2700.

Si quisiera comunicarse con la ciudad de Shoreline o revisar un documento en otro idioma, envíe su solicitud junto con su información de contacto a clk@shorelinewa.gov o llame al 206-801-2700.

如果您想與 City of Shoreline 進行交流或檢視以另一種語言提供的文件，請將您的請求連同您的聯絡資訊發送到 clk@shorelinewa.gov 或請致電 206-801-2700。

City of Shoreline에 연락하고 싶거나 다른 언어로 된 문서를 검토하려면 연락처 정보와 함께 요청서를 clk@shorelinewa.gov 로 제출하거나 206-801-2700번으로 전화해 주십시오.

Nếu quý vị muốn liên hệ với Thành phố Shoreline hoặc đọc tài liệu bằng ngôn ngữ khác, vui lòng gửi yêu cầu cùng với thông tin liên hệ tới địa chỉ clk@shorelinewa.gov hoặc gọi 206-801-2700.

Kung gusto mong makipag-usap sa Lungsod ng Shoreline o suriin ang isang dokumento sa ibang wika, pakipadala ang iyong kahilingan kasama ng iyong impormasyon sa pakikipag-ugnayan sa clk@shorelinewa.gov o tumawag sa 206-801-2700.

የሾርላይን ከተማ ጋር ከመገናኛት ከፈተኛ ወይም ለሌሎች ሰነድ በኩል ቋንቋ ከመጠየቅ ከፈተኛ ጥያቄዎን ከመገኛ መረጃዎ ጋር በማድረግ በ clk@shorelinewa.gov ካይ ኢሜይል ያድርጉ ወይም በ 206-801-2700 ካይ ስልክ ይደውሉ።

ሆስ ከተማ ሾርላይን ከተዘረረቡ ወይ ድግ ሰነድን ከሆስ ብክክስ ቋንቋ ከተገምገሙ ሆስ አገልግሎት ለከፍተኛ ሆስ ካይ መርከቢ ሓበሬታን ሆስ clk@shorelinewa.gov ስደዱ ወይ ድግ ብቁደሪ 206-801-2700 ይደውሉ።



N 148th Street Non-Motorized Bridge

A ped/bike bridge connecting people to neighborhoods and regional transit

Project Overview

The City of Shoreline is growing and changing. With the arrival of Sound Transit light rail, the new Shoreline South/148th Station for light rail and bus transit, and new development, residents need new ways to connect to these growing services and facilities and to an expanding pedestrian and bike network. To meet these needs, the City of Shoreline will build a new pedestrian and bike crossing over Interstate 5 (I-5) at N 148th Street.

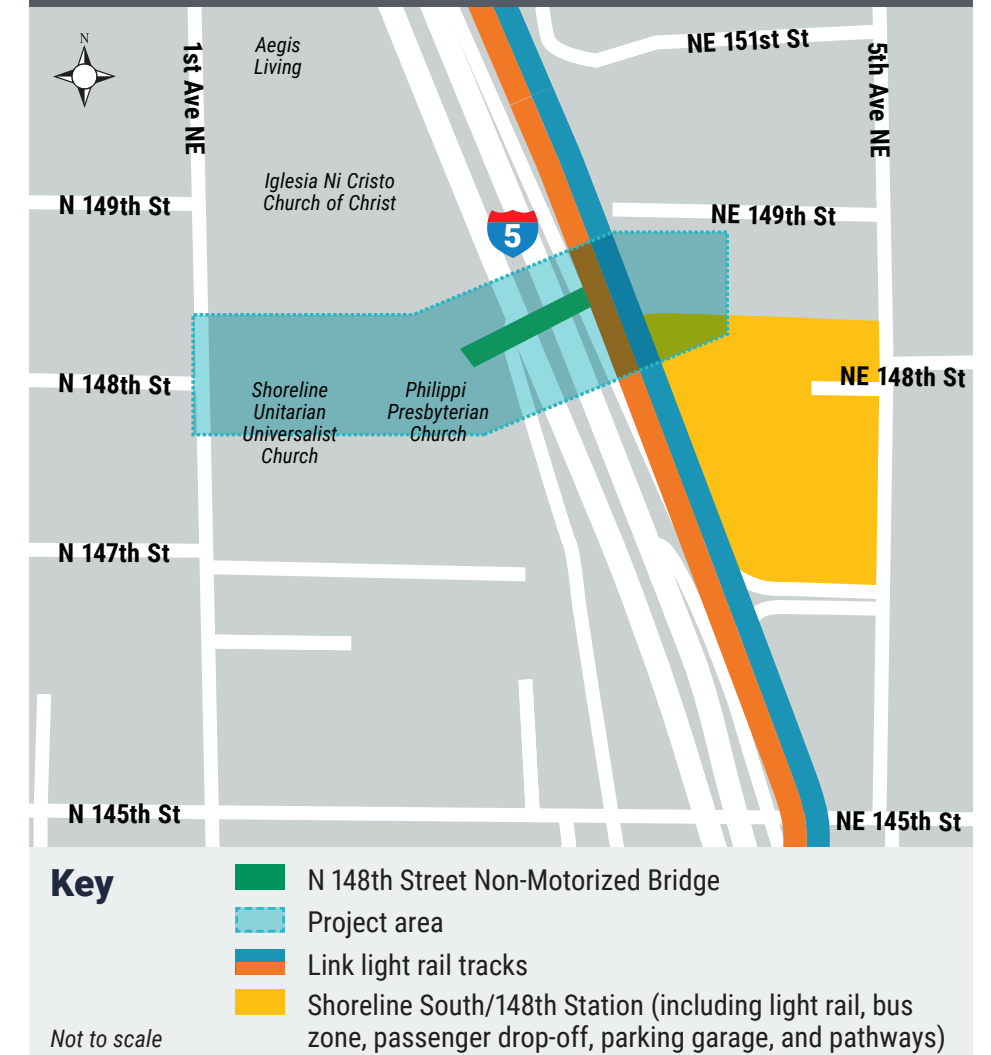
The bridge will provide a vital new ped/bike connection over I-5, improve safety, reduce travel times, and improve access to regional transit at the future Shoreline South/148th Station. In 2016 and 2017, City staff did a study to evaluate and recommend locations for this connection over I-5. They estimated that the location at N 148th Street would cost the least to construct, likely draw the most users, and, of the routes possible, provide the shortest and most direct access to the Shoreline South/148th Station. The City also reviewed WSDOT and Sound Transit regulations in order to address safety needs around and across I-5. Shoreline City Council approved this location in February 2017.

Location

The new bridge will stretch across I-5 at N 148th Street, be wide enough to accommodate pedestrians and bicyclists, and comply with Americans with Disabilities Act (ADA) standards.

The project team sought public input throughout the early design and planning phases through community briefings, an online public meeting, and online open house. Community input contributed to decisions about what type of bridge will be built, and how the bridge will connect to the new station on the east side of I-5 and to 1st Avenue NE on the west side of I-5.

Project Area Map



Project Design

The project team considered several options for each portion of the project. The team presented three design options for the bridge span, three design options for the East Bridge Landing, and two for the West Trail Connection. On June 1, 2020, City Council approved the following options, as the combined preferred alternative to move forward through design and construction. These options were selected based on public input and technical needs.

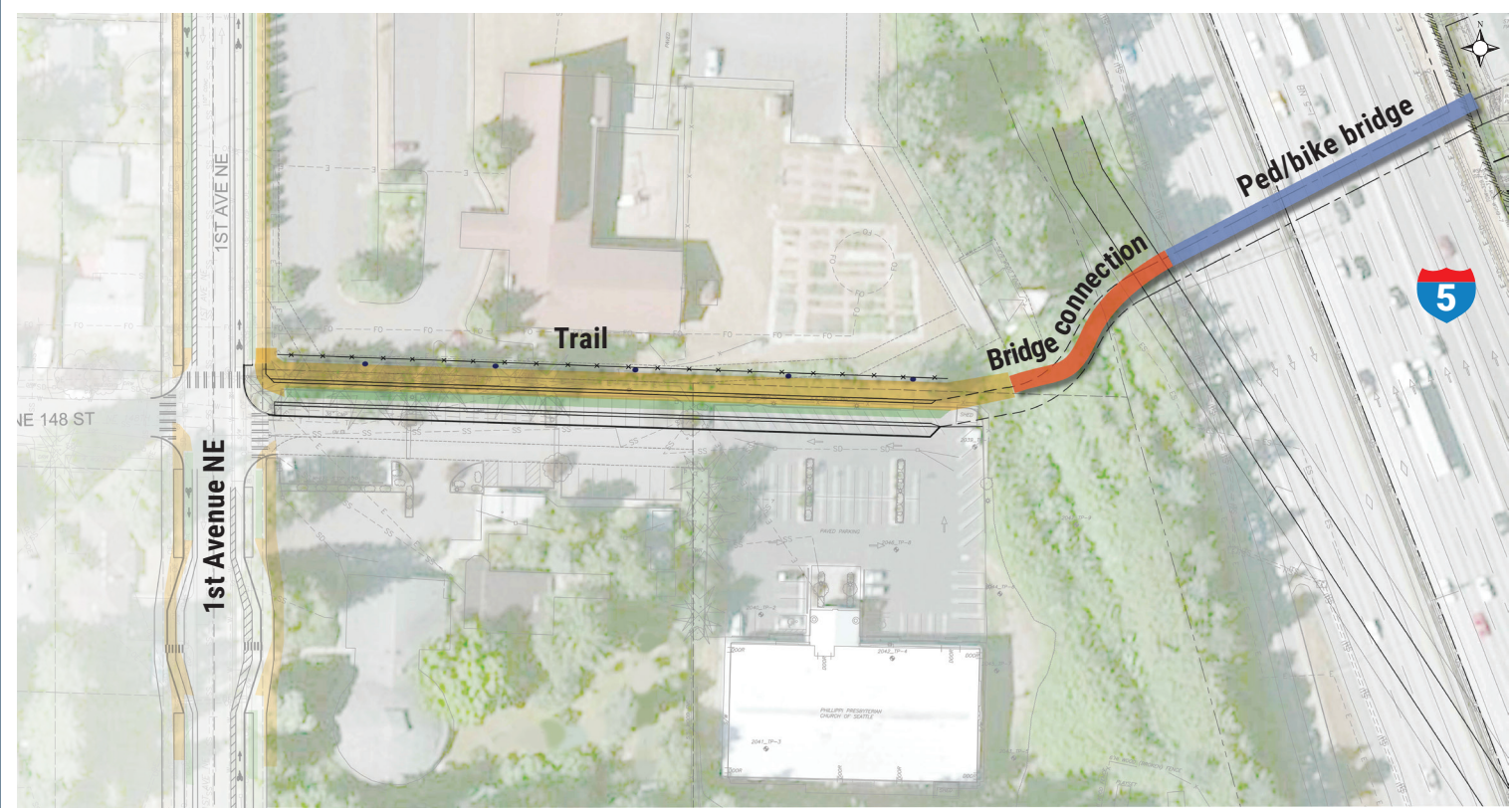
Bridge Span



TIED ARCH BRIDGE: Stretching over I-5, the side-by-side arches and supporting cables of the bridge will create space and light for people using the bridge and those traveling nearby. The bridge will be wide enough for pedestrians and bicycles and built to comply with American with Disabilities Act (ADA) standards.



West Trail Connection



FULL BUILD-OUT: This portion will connect the bridge to 1st Avenue NE via a 16-foot shared path and planted buffer. The exact alignment is still being determined and the City is looking for ways to minimize impacts to trees and parking. The City is working closely with neighboring property owners as the design is refined.

East Bridge Landing



DIRECT RAMP: The ramp on the east side of the project will provide direct access to the future Shoreline South/148th Station, bus routes, and the future Trail Along the Rail. The direct ramp design will eliminate the need for stairs, providing easy access for travelers, on foot, on bicycle or using assisted modes of travel such as wheelchairs.

Design Development and Construction

The project will reach final design near the end of 2021. As the project design is refined, graphics and renderings of each element will be updated. All elements will have lighting and safety features to help travelers walking or cycling in both directions. The bridge will be built largely off-site, minimizing construction impacts over I-5.

Projected Project Costs

Design	\$4.2 million
Right of way	\$1.8 million
Construction	\$ 25 million
TOTAL PROJECT COST	\$ 31 million

The total projected cost for the project is approximately \$31 million. The current funding provides for the project team to complete design, right of way/acquisitions for the entire project, and construction on the East Bridge Landing. Current funding is secure, but there is a \$19.9 million funding gap.

Because of the proximity to the new light rail station, the East Bridge Landing will be constructed first, before the station is operational. This will avoid complex and more expensive construction if the station were already open.

The City will continue to search for additional funding needed to construct the Bridge Span and West Trail Connection. The current goal is to complete this project in 2023, pending full funding. Without full funding, however, there may be a pause in construction after 2023 when the East Bridge Landing is complete. The length of that pause is unknown as it will depend on when additional funding is secured.