

Zoom Video
is shown here

This Week in Shoreline

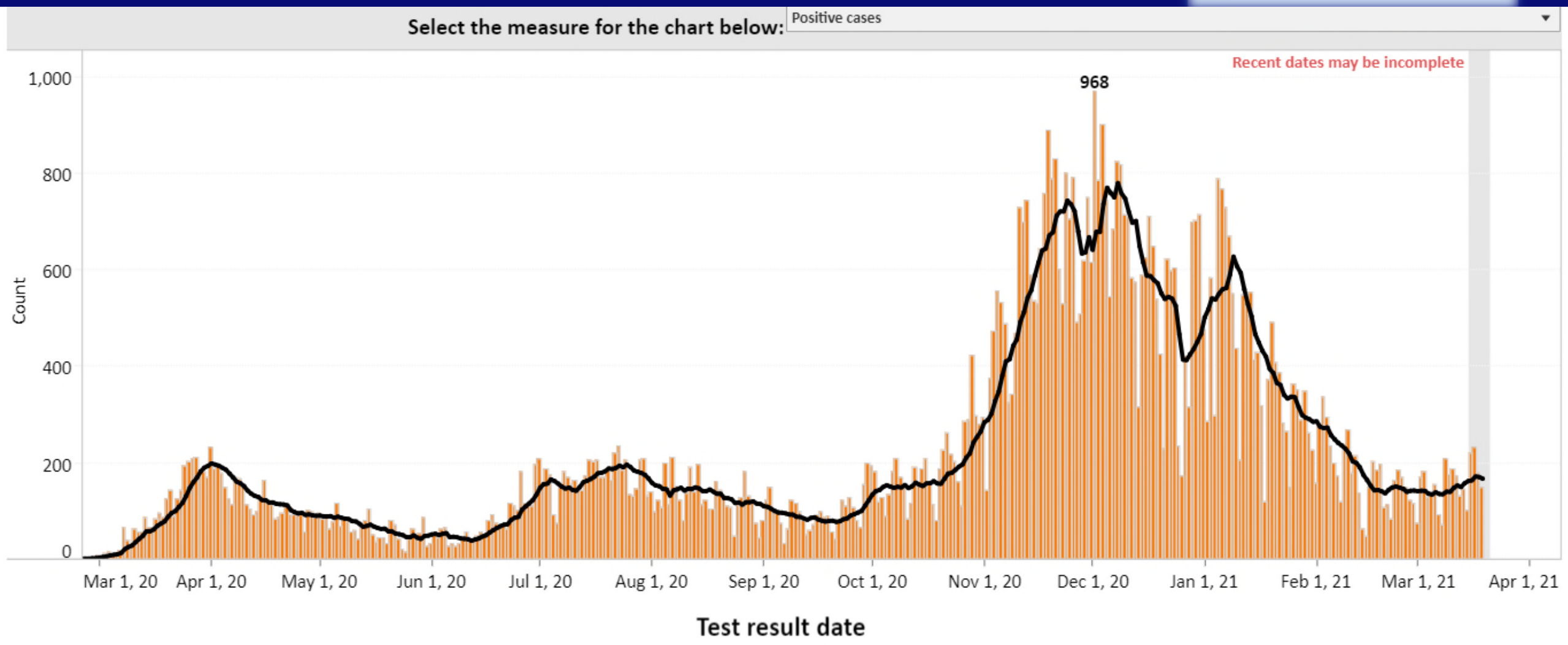
March 22, 2021

Highlights from the past weeks
and previews of coming events



King County COVID-19 Case & Recovery Metric Trends

Zoom Video is shown here

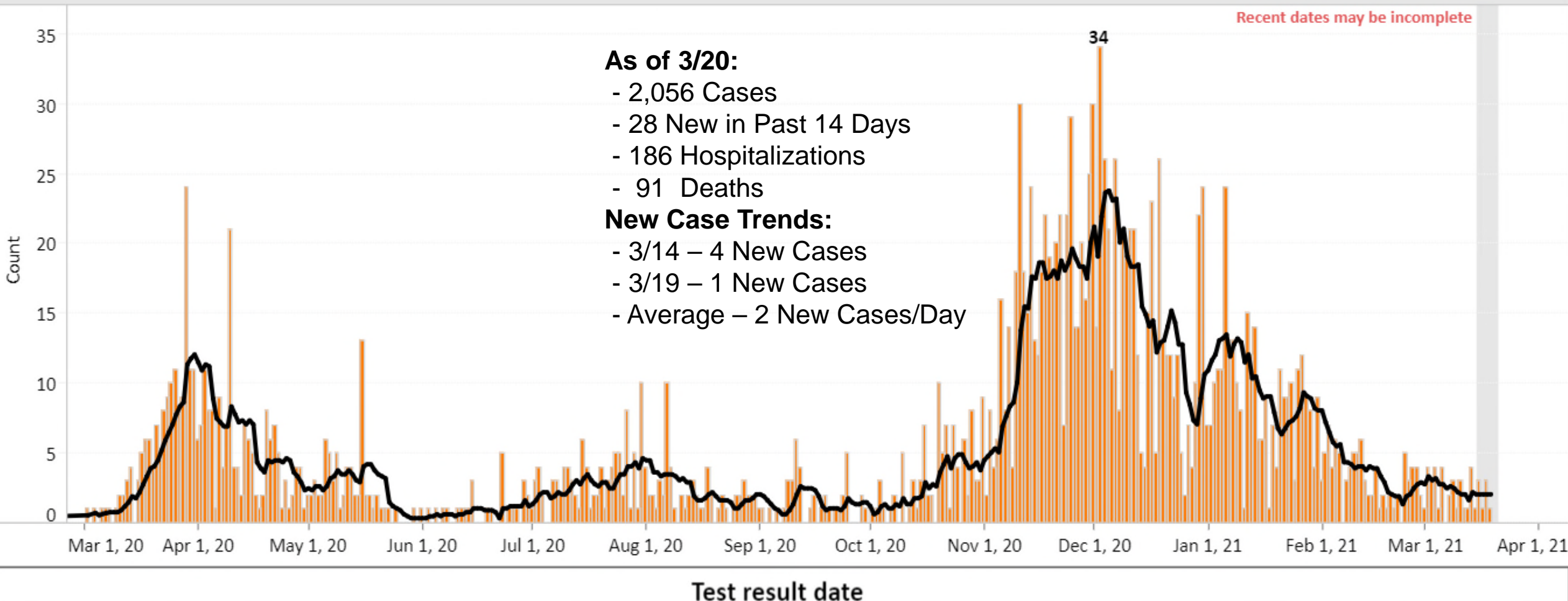


Shoreline Positive COVID-19 Case Trends

Zoom Video
is shown here

Select the measure for the chart below: Positive cases

Recent dates may be incomplete



COVID-19 Update

Zoom Video
is shown here

Phase 3 began today:

- Indoor gatherings: Maximum 10 people from outside your household
- Outdoor gatherings: Maximum 50 people
- All indoor spaces can allow 50% capacity, including restaurants, gyms, fitness centers, and movie theaters.
- In-person spectators at sporting events with stationary seating allowed at 25% capacity.
- Counties will be evaluated for progress every three weeks.

shorelinewa.gov/covid

Protect Our Community

Zoom Video
is shown here

Continue prevention measures:

- Wear a face covering, especially indoors in public settings regardless of the distance between people.
- Wash or sanitize your hands regularly.
- Maintain six feet of distance, indoors and outdoors.
- Outdoor gatherings with a limit of 15 people from two households.
- Get tested at the first sign of illness.
- It's safest to stay home.

shorelinewa.gov/covid

WASHINGTON'S COVID-19 VACCINE PHASES

Find out if it's your turn at [FindYourPhaseWA.org](https://www.findyourphasewa.org)

1A
TIER 1
1A
TIER 2

- High-risk health care workers in health care settings
- High-risk first responders
- Long-term care facility residents
- All other workers at risk in health care settings

1B
TIER 1

DECEMBER 2020 – PRESENT 2021

- All people **65 years or older**
- All people **50 years or older** in multigenerational households (home where individuals from 2 or more generations reside such as an elder and a grandchild)
- Educators and staff for pre-K through 12th grade
- Child care providers

1B
TIER 2

- High-risk critical workers who work in certain congregate settings: Agriculture; fishing vessel crews; food processing; grocery stores; corrections; prisons, jails or detention centers; public transit; remaining first responders
- People **16 years or older** who are pregnant or have a disability that puts them at high risk for severe COVID-19 illness.

1B
TIER 3
1B
TIER 4

EST. MARCH 31

- People **16 years or older** with 2 or more co-morbidities or underlying conditions
- All people **60 years and older**
- People, staff and volunteers in certain congregate living settings: correctional facilities; groups homes for people with disabilities; settings where people experiencing homelessness live or access services
- High-risk critical workers in certain congregate settings: restaurants, food services, construction and manufacturing

FOCUS ON EQUITY: This approach prioritizes population groups who have been disproportionately impacted by COVID-19 due to external social factors and systemic inequities, including people of color; people with limited English proficiency; people in shared housing, crowded housing, and multigenerational homes; people in poverty and low-wage earners; people with disabilities that are connected to underlying health conditions that may put them at higher risk of COVID-19; and people with access barriers to healthcare. The [social vulnerability index](#) is one of several inputs informing equitable vaccine allocation.

NOTE: Immigration and health insurance status do not impact eligibility.

The timeline represented here is tentative and subject to change based on vaccine supply and demand.

Vaccinate
WA 

[CovidVaccineWA.org](https://www.CovidVaccineWA.org)

DOH 348-785 January 2021
Last updated 3/19/21

Zoom Video
is shown here

**Current phase of
distribution:
1B – Tier 2**

**Next phase est.
March 31:
1B – Tiers 3 & 4**

**MORE INFO:
[CovidVaccineWA.org](https://www.CovidVaccineWA.org)**

Open House: Sidewalks Project

1st Avenue NE – N 192nd to NE 195th

Zoom Video
is shown here

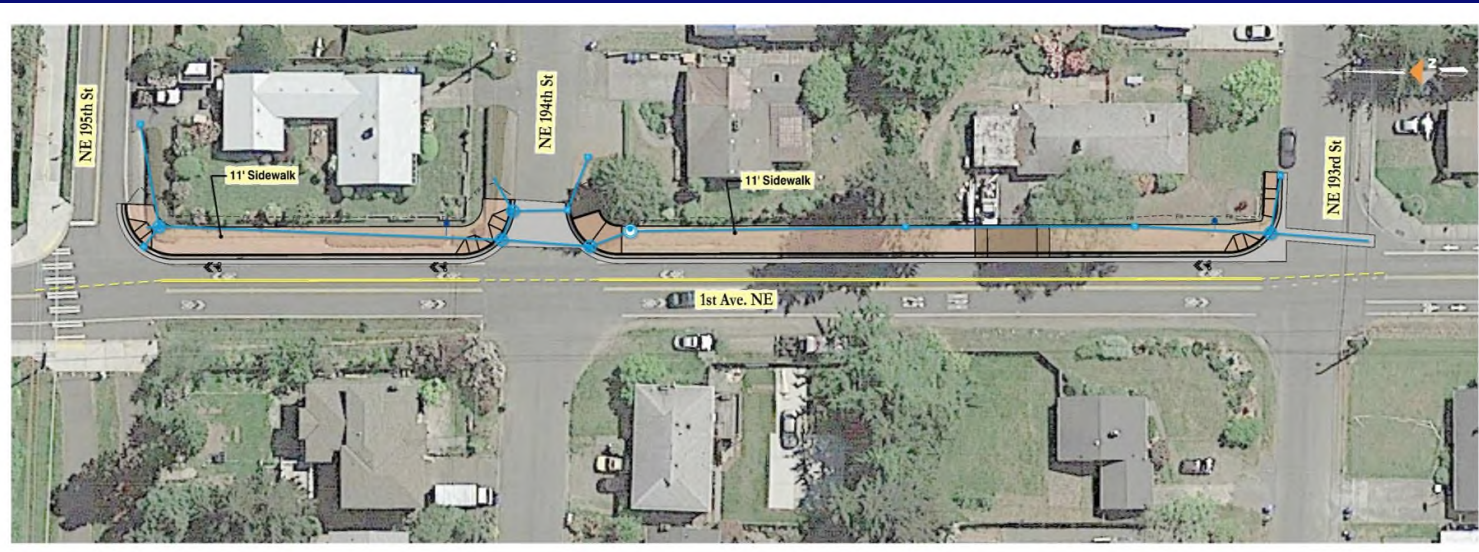
Tuesday, March 23, 12 - 1 p.m.

Online via Zoom

Learn more and ask questions about a new sidewalk project planned for 1st Avenue NE between N 192nd and NE 195th Streets. These improvements are part of the voter-approved

measure to build
sidewalks in the City.

More info:
[shorelinewa.gov/
1avesidewalks](https://shorelinewa.gov/1avesidewalks)



Public Reminders

Zoom Video
is shown here

- The PRCS/Tree Board will hold a remote meeting on Thursday, March 25 at 7:00 p.m.

shorelinewa.gov/calendar