

# 195<sup>th</sup> Street Shared Use Path



**Nora Daley-Peng, AICP, ASLA, LEED AP+**  
**Senior Transportation Planner**  
Public Works | City of Shoreline | (206) 801-2483

**Zachary Evans, PE**  
**Engineer II – Capital Project Manager**  
Public Works | City of Shoreline | (206) 801-2894

Interurban Trail

Burke-Gilman Trail

# Trail Network



# Trail Along the Rail

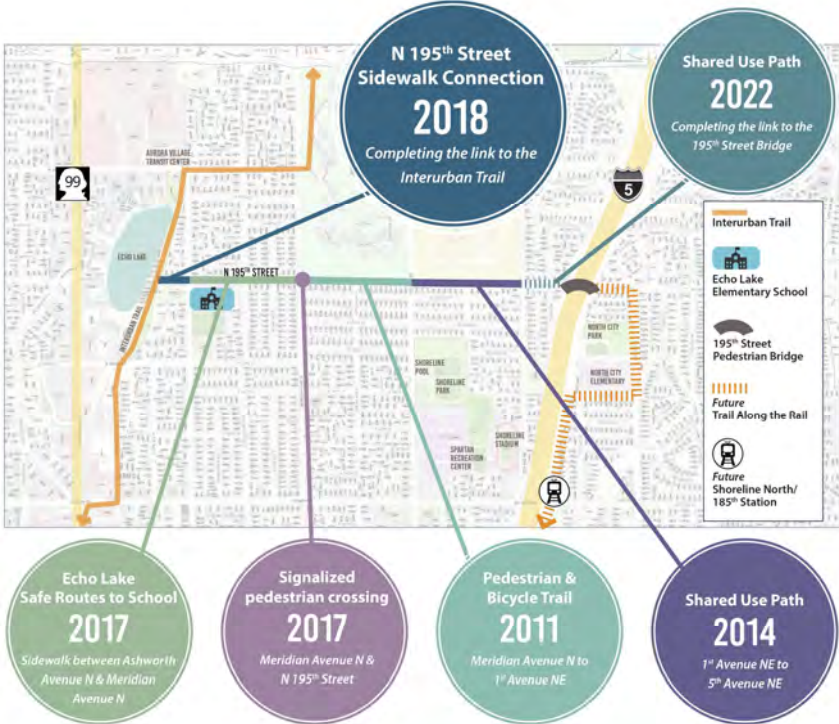




Completing the  
195<sup>th</sup> St. Link

---

# Completing the 195<sup>th</sup> St. Link





Interurban Trail



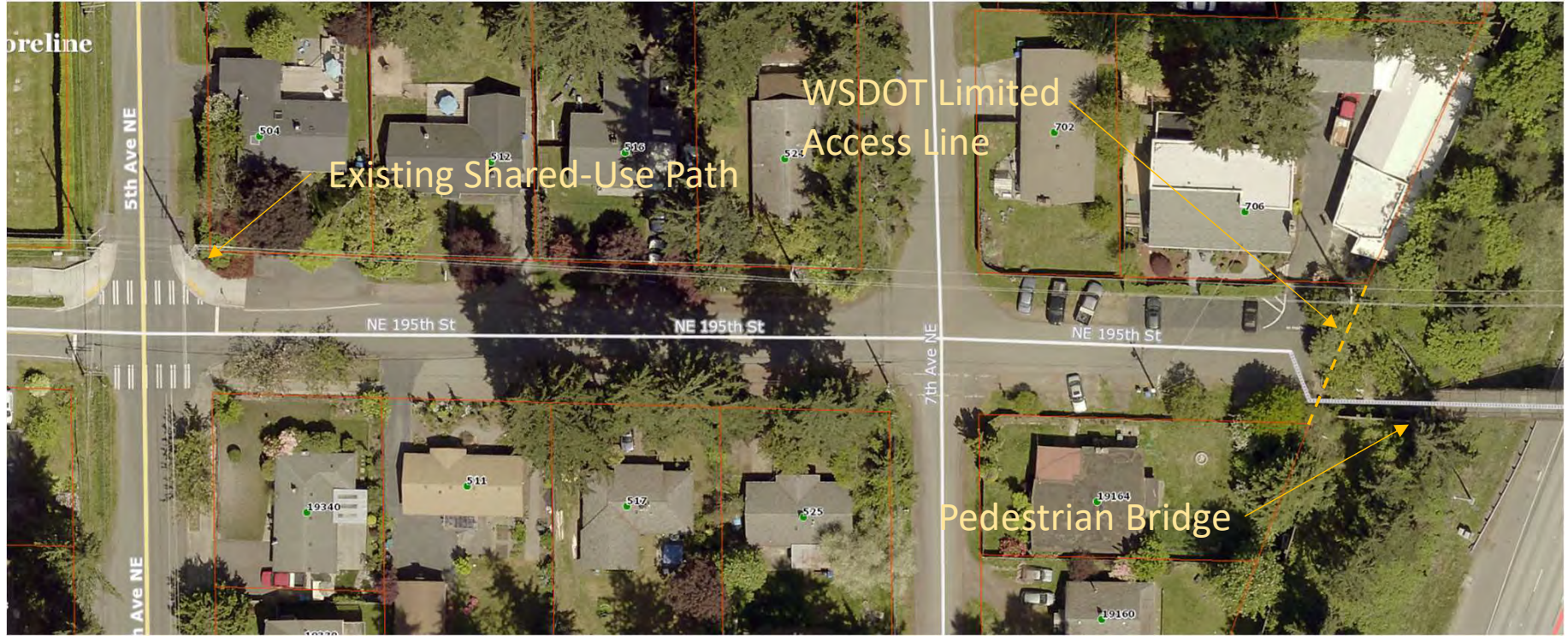
Town Cntr 1.3



Shoreline Place

Wayfinding  
Signage





# Funding and Scope Requirements

Funding:

- Transportation Improvement Board Grant for \$500,000
- State fund, intended to promote Complete Streets

Scope:

- Shared-use path on N 195<sup>th</sup> St
  - from 5<sup>th</sup> Ave NE
  - to WSDOT Limited Access Line east of 7<sup>th</sup> Ave NE

Timeline:

- Grant requires construction must be completed by Spring, 2022

Funding and Scope Requirements |



Requirements:

- 12' wide shared-use path, maximum 5% grade
- Preserve existing driveway access

Other Goals:

- Re-construct pathway between bridge and limited-access line to meet ADA requirements
- Limit impacts to adjacent residents (on-street parking)
- Amenity zone with street trees

Schedule:

- Design – now through spring 2021      Construction – Summer/Fall 2021

Scope and Project Goals



West of 7<sup>th</sup>, looking east



East of 7<sup>th</sup>, looking east

# Existing Conditions 1

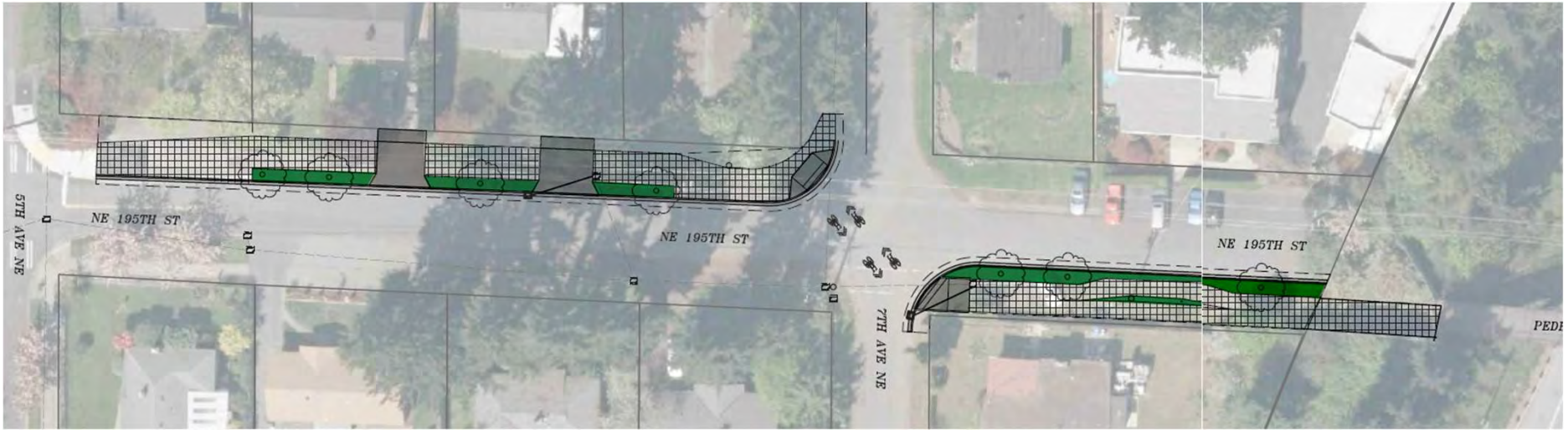


West of 5<sup>th</sup>, looking east



East of 5<sup>th</sup>, looking east

# Existing Conditions 1



# Concept Plan





Diagonal Crossing @ All Way Stop |

# Thank you!

**Nora Daley-Peng, AICP, ASLA, LEED AP+**  
**Senior Transportation Planner**  
Public Works | City of Shoreline  
(206) 801-2483  
ndaleypeng@shorelinewa.gov

**Zachary Evans, PE**  
**Engineer II – Capital Project Manager**  
Public Works | City of Shoreline  
(206) 801-2894  
zevans@shorelinewa.gov



**COMMENTS**