



**City of Shoreline
Hidden Lake Dam Removal Project
SEPA Process Open House & Neighborhood Meeting Summary**

Overview

In November 2020, the City of Shoreline completed a series of outreach activities as part of the initial SEPA process for the Hidden Lake Dam Removal project. Outreach activities included notification to project stakeholders and property owners in the vicinity of the project, an online open house and a virtual public meeting.

Outreach activities allowed the City and the City's Consultant Team to present information about the proposed design and goals of the project. The public was able to give feedback on the project goals, objectives and design.

Audience and Participation

Mailers were sent to key project stakeholders and over 40 residences within 500 feet of the project limits. These mailers invited residents to participate in the public online open house and neighborhood meeting. The notification letter is included as **Appendix A**.

30 people participated in the online open house and neighborhood meeting.

Online Open House Summary

The online open house was available from November 16 – 19. The open house presented graphics and background information that introduced residents to the project. The open house also included a survey for residents to leave feedback. The online open house and survey are included as **Appendix B**.

We received three responses to the survey, two of which were property owners with homes on the lake or creek.



What is your ZIP code?

Answered: 3 Skipped: 0 First: 11/16/2020 Zoom: 11/12/2020 to 11/18/2020

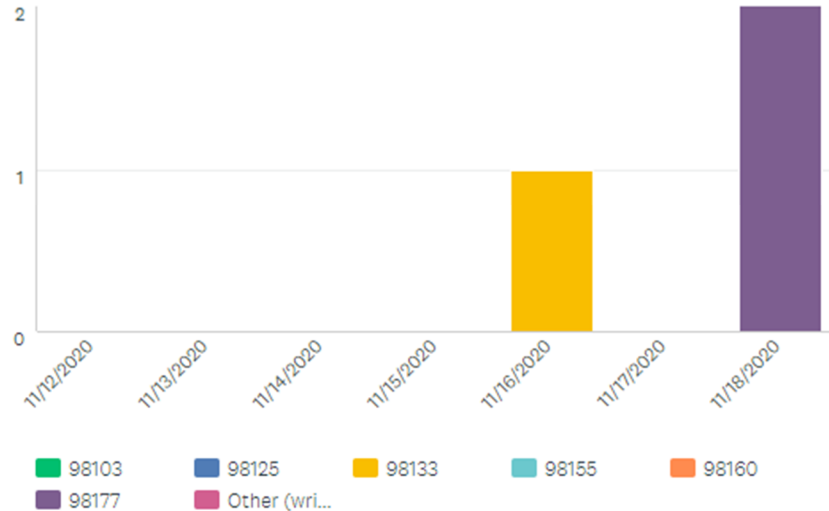


Figure 1: Zip Code of Respondees on each day of the Online Open House

Comments from the response box of the survey are summarized and included as part of **Appendix B**.

Neighborhood Meeting Summary

6 residents attended the online neighborhood meeting. The meeting presentation is included as **Appendix C**. Key themes discussed as part of the neighborhood meeting are presented in the **Key Themes** section below.

Key Themes

The prominent themes throughout the outreach process are summarized below. Detailed feedback of the questions received as part of this process are included in the **Question & Answer** section below.

- Downstream Effects of Project
- Road Closures and Traffic
- Vegetation Removal
- Water Quality and Stream Restoration



Question & Answer

Downstream Effects of Project

1. Our property borders the creek and there is no rip rap protection for increased stream flow and perhaps level rise, we have already experienced slope erosion bordering the creek. Is this being addressed in the plans?

Answer: Modeling completed by the City's consultant team indicated that water surface elevations and velocities will not increase on the downstream side of NW Innis Arden Way following the project construction. Additionally, the project will allow for more sediment to move downstream in Boeing Creek, filling in some sections of the creek which will be beneficial for the stream bank. The design for culvert replacement is being careful to not remove riprap that is buttressing the slope in this area, so as not to cause any instability of that slope.

2. I am wondering why there is little discussion of removing the Seattle Golf Course dam downstream from our property that is no longer functional except for blocking fish migration upstream?

Answer: During the course of evaluating culvert replacement beneath NW Innis Arden Way as a separate but complementary project to dam removal, City Council expressed interest in the potential to restore fish passage from Puget Sound to NW Innis Arden Way. The results of a study of what would be required for fish passage in that length of the creek indicated that implementation of improvements in Lower Boeing Creek (including removal of the Seattle Golf Club dam) would not be feasible for the foreseeable future to implement as a City-led project (due to high costs to construct and maintain, high environmental impacts, high risk levels, a lack of existing access, and a lack of City ownership of property or assets downstream of NW Innis Arden Way). City Council provided concurrence in an October 2, 2017 meeting that Lower Boeing Creek improvements (including removal of the Seattle Golf Club Dam) is currently infeasible as a City-led project.

3. Why are you proposing this huge culvert if the downstream area will not be restored for salmon passage?

Answer: In order to obtain the local, state, and federal permits needed to construct this project, the new NW Innis Arden Way culvert is required to be designed to meet current fish passage standards. These permit requirements take a long-term view on fish passage; someday the downstream barriers to fish passage could be removed and we can't create more barriers as new projects are constructed.



4. The same amount of sediment will still be coming down Boeing Creek so will it now just build up on the downstream dams?

Answer: Lower Boeing Creek between Hidden Lake Dam and the downstream dams has essentially been sediment starved because of the presence of the dam so after it is removed, we anticipate the sediment will self-heal some spots along the creek where erosion has been occurring. We have topographic survey information for the stream channel elevation profile downstream of the Hidden Lake area to near the creek mouth. That information indicates that the Seattle Golf Club dam impoundment has effectively filled with sediment, so increased sediment transport downstream following this project is not expected to alter that condition. There are no other structures downstream of the project which could be defined as dams, though there is a human built steep rock cascade. Sediment has filled in any pool that may have once existed upstream of it, so more sediment can be trapped in the channel upstream of this feature.

5. Has there been [a] Geotechnical analysis of slope stability downstream of the culvert and plans to accommodate water flow and slope stability/erosion for property owners?

Answer: Yes, a geotechnical analysis has been completed for the project areas. The geotechnical report is available at the following link, on the project web page.

<https://www.shorelinewa.gov/home/showpublisheddocument?id=50315>

Road Closures and Traffic

1. The proposed plans have a large drop off from the roadway, what are your plans to address this safety issue for pedestrians and cars coming down Innis Arden Way?

Answer: The road curvature and width will be reconstructed to match the existing roadway configuration, but it will also include wider shoulders on both sides. Guardrail will be reinstalled approximately in the same location where there is currently guardrail. The City Traffic Engineer has been involved in the review of the design and the City will ensure the roadway meets current standards.

2. What will be the impacts to accessing NW 166th and NW 167th Streets?

Answer: During the 3-4 months currently scheduled for the summer of 2024 when NW Innis Arden Way is completely closed for the culvert construction, these streets can only be accessed from 10th Avenue NW via NW 175th Street.



Vegetation Removal

1. Will the area around the new creek channel in the lakebed turn into a large muddy area?

Answer: This area will be graded to drain to the creek channel with the exception of some small areas specifically designed, constructed, and planted to function as wetlands. Thus, standing water will generally not be an issue following construction. The top layer of soil backfill in the footprint of the existing lake area will have densely planted native vegetation (groundcover, shrubs, other plants). Tree placement was specifically chosen to block views to homes from Shoreview Park users while still allowing those current lakeside homes to have views of the restored Boeing Creek.

2. You're proposing to remove a lot of vegetation along Innis Arden Way. It takes a long time for new plantings to mature. What will be in place for the interim period before vegetation is established? We have concerns about privacy and slope stability. Do you have any plans to mitigate sound and light from cars?

Answer: The vegetation along the disturbed area on both sides of NW Innis Arden Way will all be replaced. The design will include fast growing vegetation to more quickly provide privacy and shield homes from sound and light, with a successional planting plan that includes trees that will take more time to grow tall. When vegetation is fully mature, the density should closely match what is currently growing in the area.

Water Quality and Stream Restoration

1. What does "Create a new stream channel" mean? Is this creating a real stream instead of a lake?

Answer: Yes, this project will restore a stream channel (bed and banks) within Hidden Lake where the existing lakebed is.

2. Could you eventually address flow control from feeder streams into the creek and are there mitigation strategies to reduce or alter the feeder flows?

Answer: Groundwater springs are the main contributor to Boeing Creek for year-round base flows. Stormwater runoff contributes to the high peak flows during and shortly after rainstorms. The City already has some flow control facilities in place for Boeing Creek upstream of Hidden Lake. A regional stormwater facility was recently considered by the City, but studies have found it to not be feasible at this time. The high stormwater-driven peak flows we currently see in Boeing Creek will be reduced over time as redevelopment of older properties occurs, because flow control is



required for redevelopment. This change will be a slow and steady improvement taking place over several years and even decades.

3. Can you also address water quality pre/post project?

Answer: There was a beach closure in the summer of 2020 due to fecal bacteria material in the creek water. A DNA test determined that the bacteria was not originating from dogs or humans, thus we think it is due to waterfowl, and ducks using Hidden Lake are certainly a suspect source among waterfowl. Temperature will also improve with a better shaded creek. With natural streamflow conditions following project construction both of these water quality parameters are expected to improve in the creek.

4. Do we know why the County put [the dam] back?

Answer: While we don't know for sure, it seems likely that residents viewed the original lake which disappeared in the 1970s from sedimentation as a legacy item that should be restored. At the time (in 1995) when the County reconstructed the dam and lake, environmentally it was proposed to benefit waterfowl (through habitat) and salmon spawning (through sediment removal), as part of environmental mitigation for impacts due to expanding the West Point Sewage Treatment Plant in Seattle. County biologists determined that incorporating a managed sediment trap in the lake could retain sediments that otherwise would smother salmon spawning gravels near the creek mouth. Since the 1990s the lake has induced shrinking of the creek delta in Puget Sound because of its effectiveness in retaining sediment, whereas salmon recovery science has found that such delta areas are important for Chinook salmon forage fish habitat, indicating that allowing the creek sediments to be transported all the way to the delta is desirable. It should also be noted that current permit requirements would not allow the work done in 1995 to reconstruct the dam and lake.



Appendix A
Notification Letter



**SHORELINE
CITY COUNCIL**

Will Hall
Mayor

Keith Scully
Deputy Mayor

Susan Chang

Doris McConnell

Keith A. McGlashan

Chris Roberts

Betsy Robertson

October 30, 2020

Subject: Hidden Lake Dam Removal Project

Dear Shoreline Resident:

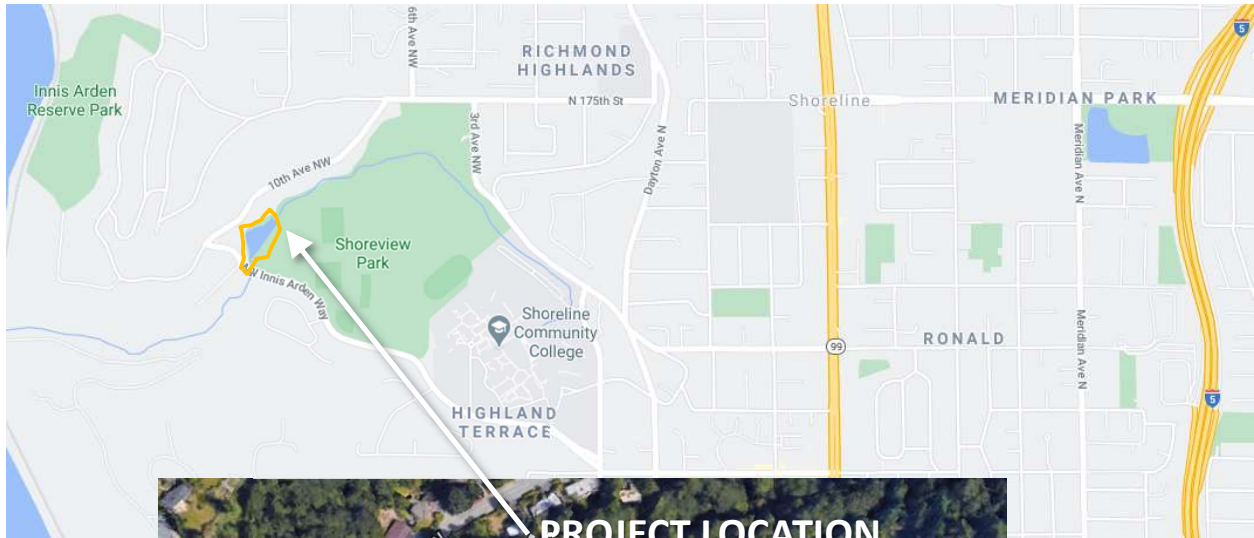
You are invited to participate in an online open house from November 16th – 19th to learn more about the proposed Hidden Lake Dam Removal project in your neighborhood. Please go to the online open house at shorelinewa.gov/hiddenlake to read a description of the project, see site plans and graphics, and leave your comments. If you leave an email address, following closure of the online open house we will send you a Neighborhood Outreach Summary reporting on suggestions, requests, or concerns expressed, our responses, and any modifications to the design made as a result of feedback. We will also host a conference call via Zoom on November 19th at 12:00 PM (noon) to answer questions and respond to neighborhood comments. The link to the zoom call will be available at the above website or please call in to 1-253-215-8782 and enter the Meeting ID: 882 1712 7250 followed by the # to join this call from a phone.

If you are unable to participate in the online open house, contact Laura Reiter, lreiter@shorelinewa.gov, before November 16th if you wish to discuss the project, provide feedback, request emailed project drawings, request a copy of the Neighborhood Outreach Summary, or otherwise correspond regarding this project.

Project Description: The City of Shoreline is proposing to remove the existing Hidden Lake Dam in order to improve flood risk and sediment transport conditions for Boeing Creek within the existing lake area. The site is zoned R4. The project will include stream restoration through the artificially created Hidden Lake, replacement of the existing stream culverts crossing below NW Innis Arden Way, and improved trails within Shoreview Park along the restored creek. The first phase of construction is anticipated to begin late Spring 2022.

Required Applications:

- SEPA Environmental Review
- Floodplain Development Permit
- US Army Corp of Engineers Section 401/404
- Site Development Permits





Appendix B
Online Open House & Survey

Hidden Lake Dam Removal Project Online Open House

Welcome to the Hidden Lake Dam Removal Project Online Open House!

The purpose of this Online Open House is to provide a chance for residents to:

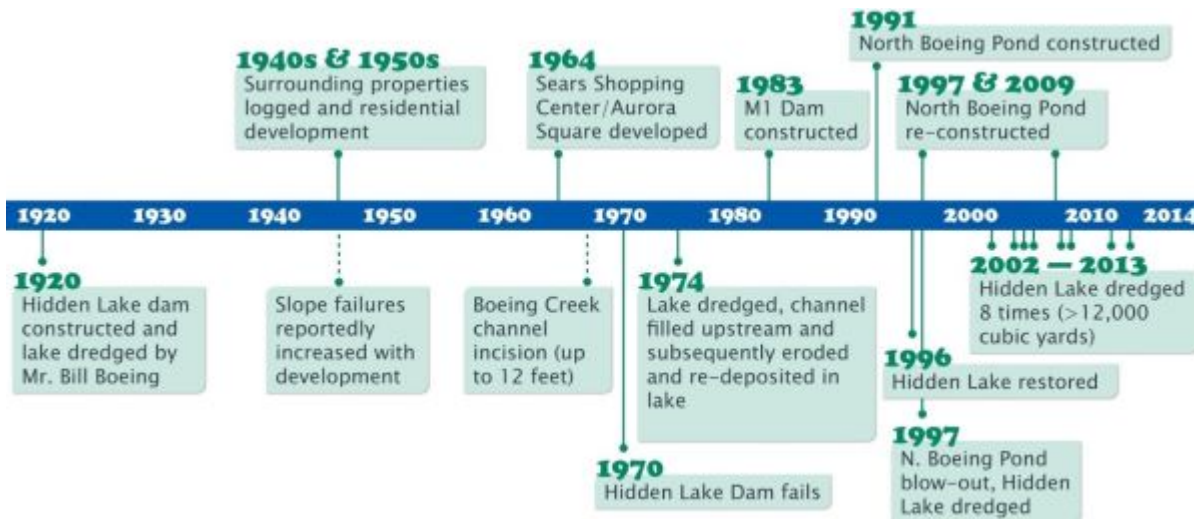
- Learn more about this project
- Share what's important to you and provide comment

Learn more about the proposed design and history of this project below and complete the survey to provide feedback. The online open house and survey will take only a few minutes to complete.

Thank you for your participation!

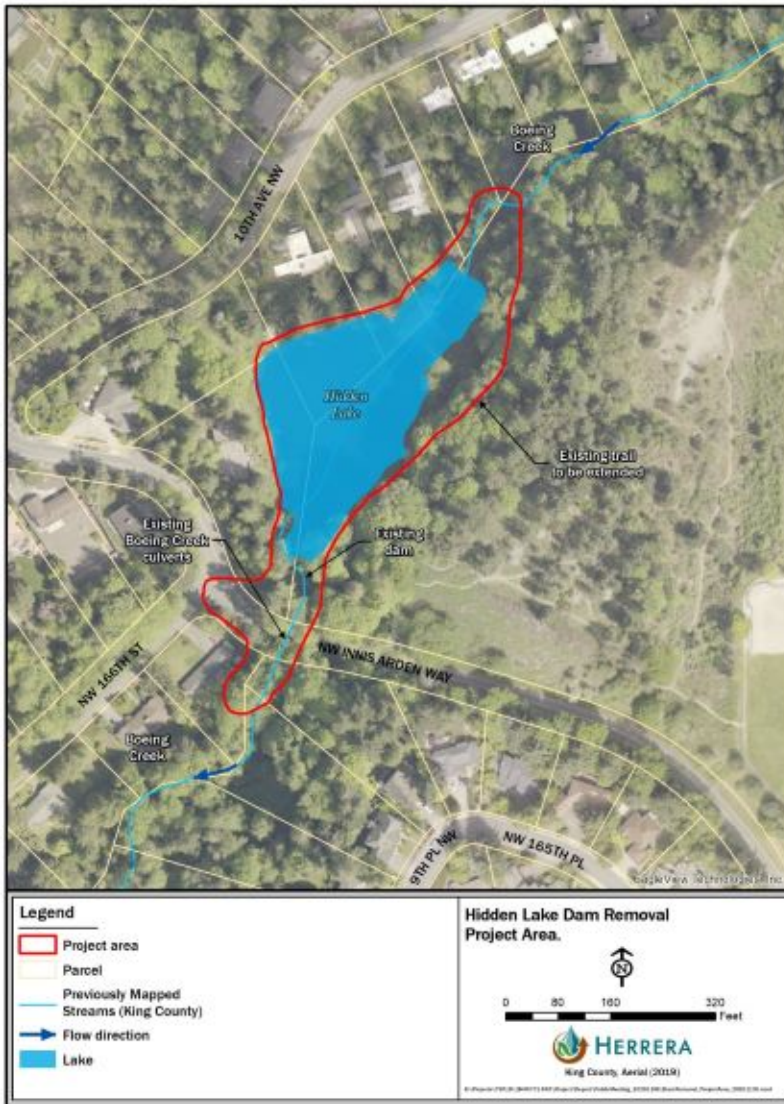
Project Overview

The City of Shoreline is proposing to remove the existing Hidden Lake Dam in order to improve flood risk and sediment transport conditions for Boeing Creek within the existing lake area. Hidden Lake is an artificially made water body built in 1920 as a private fishing pond. Since that time, the lake has continually dealt with sediment accumulation issues. The initial lake was completely filled in by the 1970's and has continued to accumulate large volumes of sediment since its latest re-establishment in 1995. The lake can only be maintained through regular removal of these large volumes of sediment (dredging). If the lake is allowed to completely fill itself, it would prevent flows from Boeing Creek to safely pass under NW Innis Arden Way, creating a potentially dangerous flood risk to the roadway and nearby properties. The last time the lake was dredged was in 2013 and shortly after City Council decided to stop dredging and begin this project to remove the dam.



A timeline of Hidden Lake's history (click the image to enlarge)

The project will include the restoration of Boeing Creek through the existing Hidden Lake area. Removing the lake is expected to improve water quality by reducing the introduction of bacteria from waterfowl and lowering the water temperature. The replacement of the existing stream culverts crossing below NW Innis Arden Way will improve flood control in the area. Additionally, access to the site will be enhanced with the construction of new looped trails within Shoreview Park along the restored creek.



The existing project site (click the image to enlarge)

Schedule

Construction of the proposed project improvements require in-water work which can only be completed during the summer months. Therefore, a phased approach to the work must be implemented. The first phase of construction will include the removal of the lake and dam, stream restoration, and trail improvements. The second phase of construction will replace the culverts underneath NW Innis Arden Way.



A general outline of the project schedule (click the image to enlarge)

Proposed Site Plan

An illustrative perspective of the Hidden Lake area following construction might look like the following graphic, once plants are fully established.



An illustrative drawing of the Hidden Lake area following construction might look like (click the image to enlarge)

The project will re-establish the natural habitat of the Hidden Lake area by removing the artificially made lake, constructing a defined channel of Boeing Creek in its place that contains natural fish and wildlife habitat and grading to create a connected floodplain which will include planting of native wetland and upland riparian vegetation communities. The vegetation communities are shown the in following illustration.



Vegetation communities (click the image to enlarge)

The proposed plantings will create a wildlife habitat for numerous species shown illustratively in the following graphic.



Wildlife habitat created for numerous species (click the image to enlarge)

Take the Survey

We want your feedback. Please complete the [survey](#) to provide your comments. Thank you!



Hidden Lake

0 of 3 answered

powered by

Translations

English If you would like to communicate with the City of Shoreline or review a document in another language, please send your request along with your contact information to clk@shorelinewa.gov or call 206-801-2700.

Spanish Si quisiera comunicarse con la ciudad de Shoreline o revisar un documento en otro idioma, envíe su solicitud junto con su información de contacto a clk@shorelinewa.gov o llame al 206-801-2700.

Chinese (Traditional) 如果您想與 City of Shoreline 進行交流或檢視以另一種語言提供的文件，請將您的請求連同您的聯絡資訊發送到 clk@shorelinewa.gov 或請致電 206-801-2700。

Chinese (Simplified) 如果您想与 City of Shoreline 进行交流或查看以另一种语言提供的文档，请将您的请求连同您的联系信息发送到 clk@shorelinewa.gov 或请致电 206-801-2700。

Korean City of Shoreline에 연락하고 싶거나 다른 언어로 된 문서를 검토하려면 연락처 정보와 함께 요청서를 clk@shorelinewa.gov로 제출하거나 206-801-2700번으로 전화해 주십시오.

Vietnamese Nếu u quý vị muốn liên hệ với Thành phố Shoreline hoặc đọc tài liệu bằng ngôn ngữ khác, vui lòng gửi yêu cầu cùng với thông tin liên hệ tới địa chỉ clk@shorelinewa.gov hoặc gọi 206-801-2700.

Tagalog Kung gusto mong makipag-usap sa Lungsod ng Shoreline o suriin ang isang dokumento sa ibang wika, pakipadala ang iyong kahilingan kasama ng iyong impormasyon sa pakikipag-ugnayan sa clk@shorelinewa.gov o tumawag sa 206-801-2700.

Amharic የሾርላይን ከተማ ጋር ለመገናኘት ከፈለጉ ወይም አንድን ሰነድ በሌላ ቋንቋ ለመከለስ ከፈለጉ ጥያቄዎን ከመገኛ መረጃዎ ጋር በማድረግ በ clk@shorelinewa.gov ላይ ኢሜይል ያድርጉ ወይም በ 206-801-2700 ላይ ስልክ ይደውሉ።

Tigrigna ምስ ከተማ ሸርላይን ክትዘረረቡ ወይ ድማ ሰነዳትኩም ብካልእ ቋንቋ ከተገምግሙ ምስ እትደልዩ፡ ጠለባትኩም ምስናይ ናይ ሙርከቢ ሓበሬታኹም ናብ clk@shorelinewa.gov ስደዱ ወይ ድማ ብቕጽሪ 206-801-2700 ደውሉ።

Russian Если вы хотите связаться с представителями города Шорлайн (Shoreline) или ознакомиться с документом на другом языке, отправьте запрос вместе со своими контактными данными на адрес clk@shorelinewa.gov или позвоните по телефону 206-801-2700.

Japanese City of Shoreline とのご連絡、または他の言語での資料閲覧をお望みでしたら、お客様のご連絡先を添えたリクエストをclk@shorelinewa.gov まで送信いただくか、206-801-2700 までお電話をお願いいたします。

Khmer (Cambodian) ប្រសិនបើលោកអ្នកចង់ប្រាស្រ័យទាក់ទងជាមួយទីក្រុង Shoreline ឬពិនិត្យឯកសារឡើងវិញជាភាសាផ្សេងទៀត សូមផ្ញើសំណើរបស់អ្នកជាមួយព័ត៌មានទាក់ទងរបស់អ្នកទៅ clk@shorelinewa.gov ឬហៅទូរស័ព្ទទៅលេខ 206-801-2700។



Hidden Lake Online Open House Survey, November 16-19, 2020

Welcome to the Hidden Lake Dam Removal Project Online Open House Survey!

This survey provides an opportunity for residents to share what's important to them and provide feedback on the project. The survey should only take a few minutes to complete.

The City of Shoreline is proposing to remove the existing Hidden Lake Dam in order to improve flood risk and sediment transport conditions for Boeing Creek within the existing lake area. The project will include stream restoration through the artificially created Hidden Lake, replacement of the existing stream culverts crossing below NW Innis Arden Way, and improved trails within Shoreview Park along the restored creek.

To learn more about the proposed design and history of this project, please visit the [Hidden Lake Dam Removal](#) project page.

Thank you for your participation!

0 of 3 answered

1. We would appreciate your feedback on this project.
Please provide your comments below.

//

2. What is your ZIP code?

- 98103
- 98125
- 98133
- 98155
- 98160
- 98177
- Other (write in)

3. If you'd like us to email a copy of the online open house summary to you, please leave your email address below:

0 of 3 answered

Please consider filling out some information about yourself to help us improve our future outreach efforts.

Community Outreach Survey (Optional)

- [English](#)
- [የማህበረሰብ ተደራሽነት የዳሰሳ ጥናት \(ከተፈለገ\)](#)
- [社區外展服務調查 \(可選\)](#)
- [커뮤니티 소통 설문 조사\(선택 사항\)](#)
- [Encuesta de divulgación comunitaria \(opcional\)](#)
- [Survey sa Paglilingkod sa Komunidad \(Opsiyonal\)](#)
- [ንዝያዳ ኮማዊ ግምገማ \(ብምርጫ\)](#)
- [Khảo Sát Tiếp Cận Cộng Đồng \(Không bắt buộc\)](#)

DONE

Powered by



See how easy it is to [create a survey](#).

[Privacy & Cookie Policy](#)

0 of 3 answered



Comment Box Responses from Online Survey

Response #1:

Page 1: Welcome to the Hidden Lake Dam Removal Project Online Open House Survey!

Q1

We would appreciate your feedback on this project. Please provide your comments below.

I am a property owner at 1005 NW 166th St, Shoreline, WA. The property immediately downstream of the culvert that is to be replaced as part of the removal of Hidden Lake Dam.

We have several concerns related to this project and how it will impact our property and our lives.

We are concerned about slope stability. We lost a lot of the yard to the big washout when the Sears development went in. Rock was put in after that to retain what's left of the bank. We are not sure this is sufficient for higher water flows which will occur after the culvert is removed.

Has a geotech surveyed our slope stability? If so, we would like to see the report.

Do you have a plan in place to include structured slope retainment on our lot? If so, we would like to see it.

Another concern is exposure to the road. We currently have a very private backyard. It is one of our favorite features of the house. We understand the work will interrupt our privacy but we are hoping when the project is complete any trees, vegetation, or other features that currently provide a barrier to the street will be replaced sufficiently. We also hope there will be a privacy barrier in place during the time it takes for vegetation to regrow.

We are also concerned about the amount of our property the city will claim as part of the culvert replacement. We would like to have the area surveyed and marked. How will we be compensated for this loss of property?

Given the proximity of the construction to our house and IN OUR YARD, and the expected duration of the construction process, we are concerned about the impact that will have on our lives.

All of these concerns are very important to us. Not only for our enjoyment of our home, but also it's monetary value.

We are glad there will be habit restoration along Boeing creek. Disappointed that work to remove barriers to salmon passage upstream is not part of the plan



Response #2:

Page 1: Welcome to the Hidden Lake Dam Removal Project Online Open House Survey!

Q1

We would appreciate your feedback on this project. Please provide your comments below.

I own the house on the lake right now. We've already met about the lake removal, and while I'm not for it, we've come to terms with the fact that our opinion isn't going to change the outcome.

I am curious about the bat habitat as right now we don't have bats that I know of, or beavers and I'm not excited about having them in my back yard.

Additionally we were told that there wouldn't be salmon most likely due to a damn further up stream



Appendix C
Neighborhood Meeting Presentation

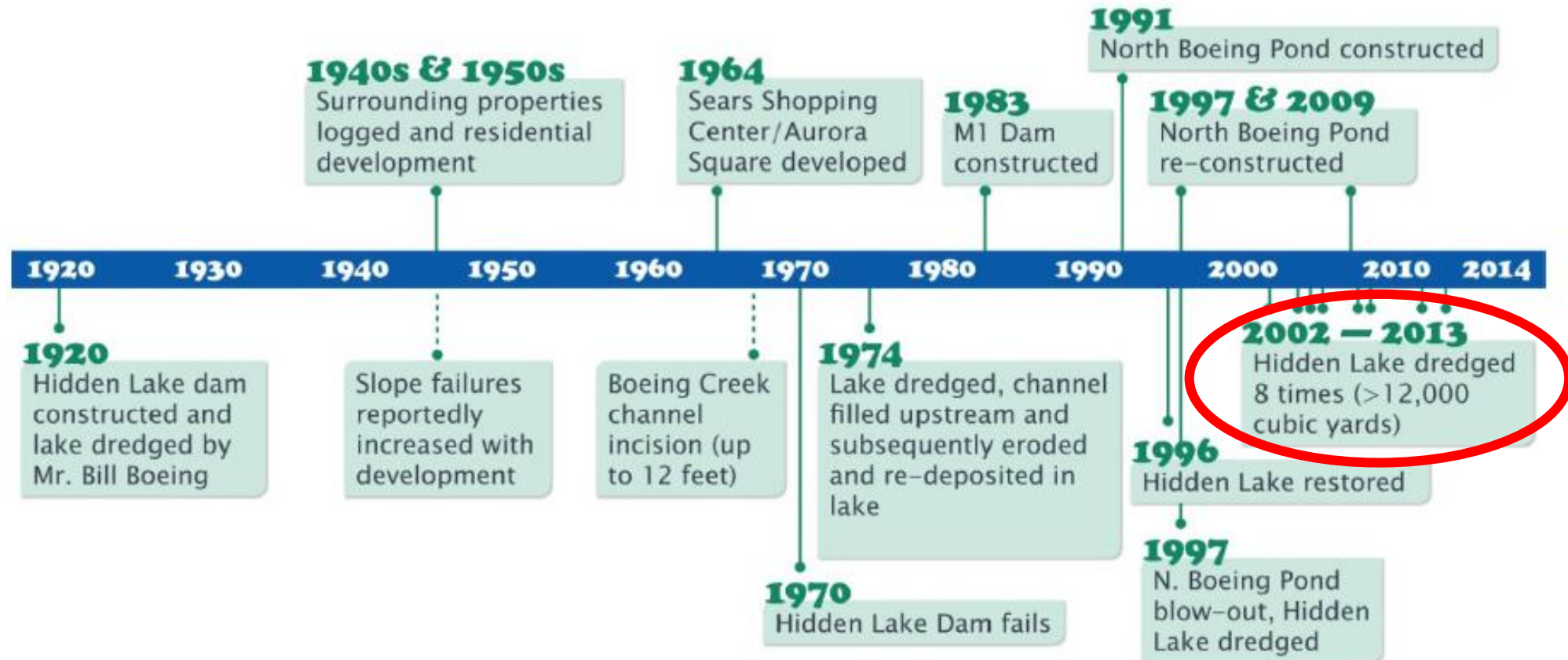
Hidden Lake Dam Removal Project

Public Meeting

November 19, 2020



Project History



Source: AltaTerra 2014

Hidden Lake - Aerial History



1936



1941



1970



1981



1989



1995



2001



2010



2012



2013



Lake Sedimentation



Mostly sand, derived from eroding ravine areas upstream and delivered to Hidden Lake during storm events



Project History

September 2014: City Council authorized the Public Works Department to stop dredging sediment from the lake, with backing from the Parks, Recreation, and Cultural Services/Tree Board

2015: Public Works commenced a study of options for the future fate of the dam and lake

May 2016: City Council approves proceeding with a plan to remove the dam and lake

2017: City Council expressed interest in the potential to restore salmon accessibility from Puget Sound into the Boeing Creek Park vicinity, as a potential added part of the Hidden Lake Dam Removal Project

- In addition to two small dams spanning the creek channel between Hidden Lake and the creek mouth at Puget Sound there are two culverts that convey Boeing Creek flow under NW Innis Arden Way that are getting near the end of their useful life and preclude upstream fish passage

2018-ongoing: detailed design work and preparation for permit applications, with inclusion of culvert replacement beneath NW Innis Arden Way



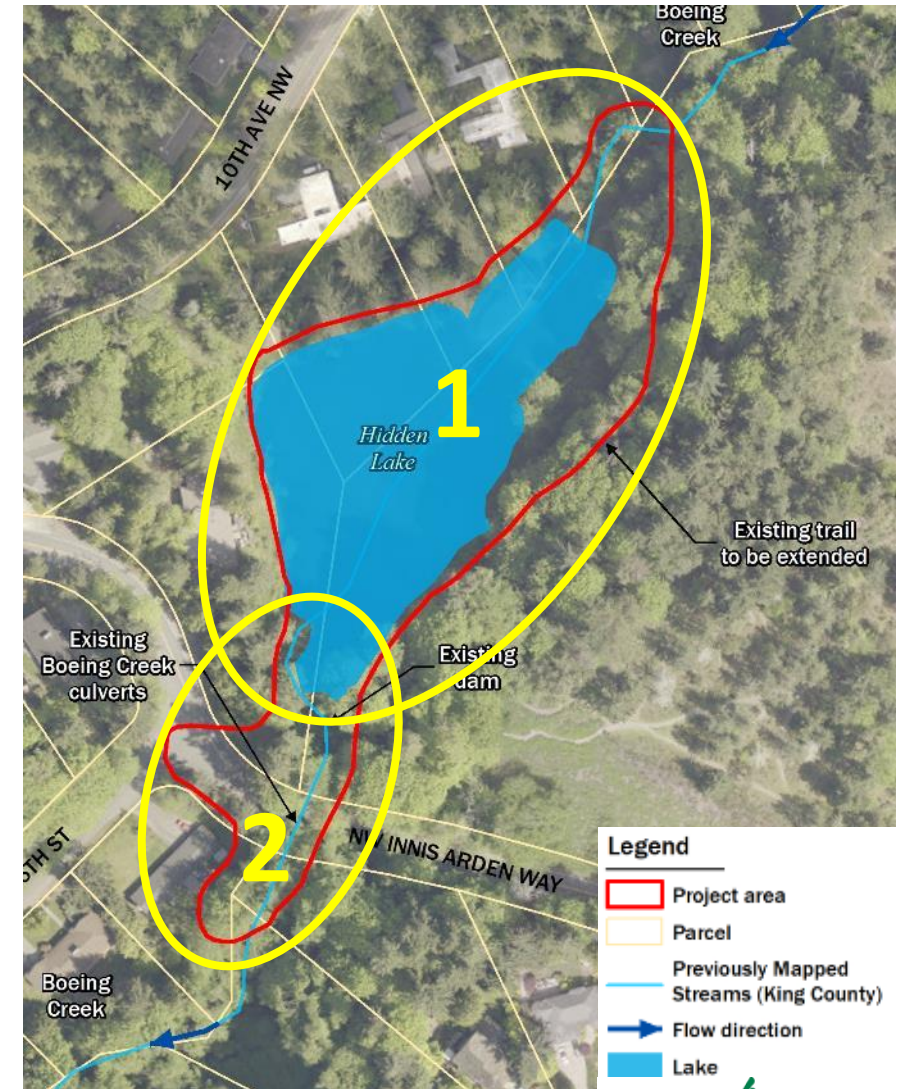
Phased Implementation

1. Remove the dam, drain the lake, construct new stream channel through lake bed connecting to existing culvert entrances at NW Innis Arden Way, build new Shoreview Park trail sections, and plant vegetation throughout the modified site

Construction planned in 2022

2. Replace Boeing Creek culverts under NW Innis Arden Way and extend stream channel improvements to downstream side of the road, which will lower the channel elevation upstream of the road

Construction planned in 2024



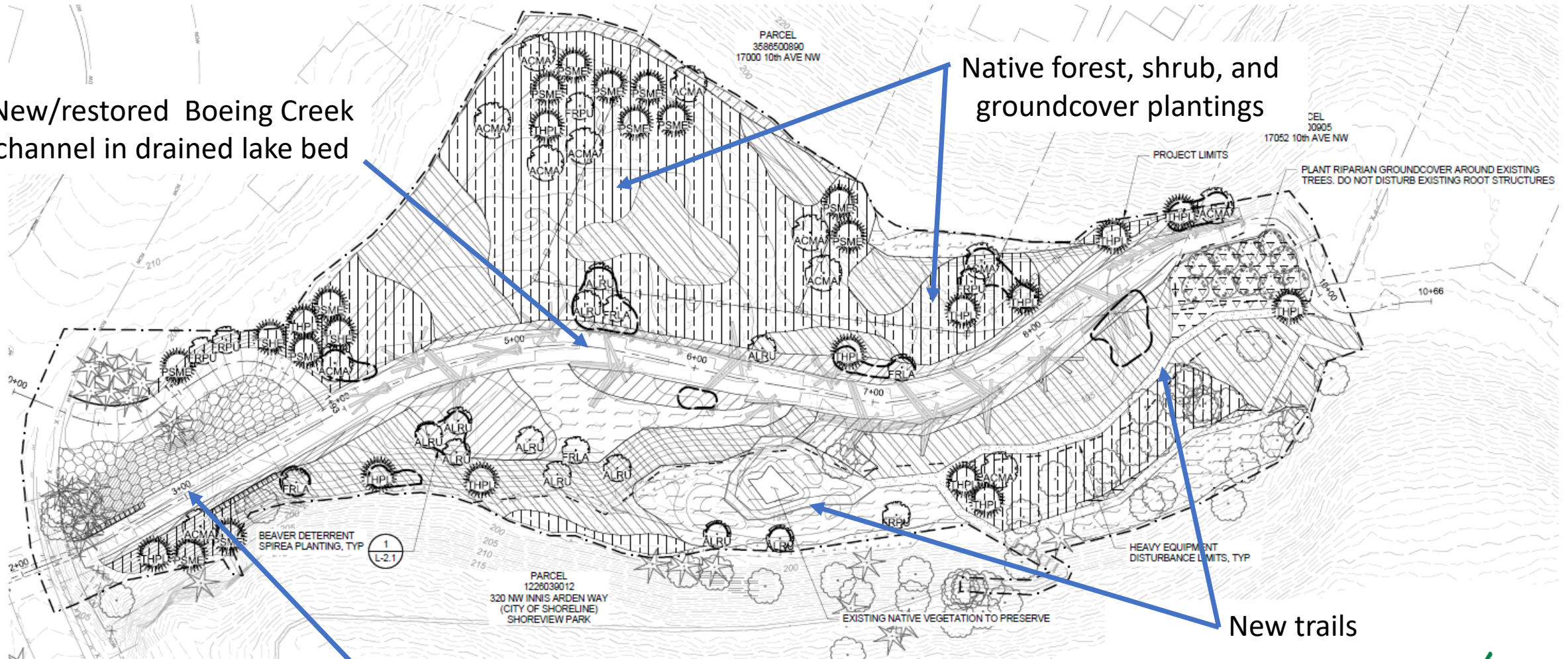
Dam Removal, Stream Restoration, and Trails

New/restored Boeing Creek channel in drained lake bed

Native forest, shrub, and groundcover plantings

New trails

Remove dam



Stream Restoration



- Smooth grade for fish access
- Shallow channel depth to enable frequent floodplain interaction
- Lots of wood for fish habitat and channel structure
- Gravel and cobble bed
- Native tree, shrub, groundcover, and emergent wetland plantings adjacent to new channel and throughout site area



Culvert Replacement



Upstream end of culverts under NW Innis Arden Way



Downstream end of culverts

Culvert Replacement



Similar type of culvert as being designed

New culvert needs to meet Washington State fish passage design guidelines:

- Natural stream channel conditions through the culvert length
- Much larger size (24 feet wide) based on referenced Boeing Creek channel dimensions

Challenges to install in deep, tight area below NW Innis Arden Way

Environmental Issues Addressed by the Project's SEPA "Checklist"

SEPA: (Washington) State Environmental Policy Act – requires a lead public agency to identify and analyze environmental impacts associated with governmental decisions. A SEPA checklist is a thorough document with format prescribed by the Washington State Department of Ecology.

Natural Environment:

- Earth
- Air
- Water
- Plants
- Animals

Built Environment:

- Energy and natural resources
- Environmental health
- Land and shoreline use
- Housing
- Aesthetics
- Light and glare
- Recreation
- Historic and cultural preservation
- Transportation
- Public services
- Utilities

Effects During and Following Construction

Natural Environment:

- Conversion of lake habitat to stream and floodplain habitat
 - Waterfowl habitat replaced by native fish habitat and terrestrial wildlife habitats
- Fish passage enabled
- Unavoidable removal of trees >> lots of trees in planting plans



Effects During and Following Construction

Built Environment:

- Traffic disruption on nearby streets during dam removal and stream restoration
- Closure of NW Innis Arden Way (traffic detouring) for several months during culvert replacement construction
- Construction noise near residences
- Improved trails in Shoreview Park with interpretative signage
- Reduced burden on the City to maintain the creek in this area, and reduced flooding-related risks to the roadway and utilities in right of way



SEPA Review Period and How to Comment

Schedule:

- The project's SEPA checklist will be issued for public comment by the Department of Planning and Community Development (PCD) in early December, to be posted on the project web page:
<https://www.shorelinewa.gov/government/projects-initiatives/hidden-lake-dam-removal>
- State-mandated 30-day public comment period follows
- Project team reviews and addresses comments and PCD issues official SEPA determination by end of January

Submit comments via email to Laura Reiter, Project Manager:

lreiter@shorelinewa.gov

Additional information regarding how to submit comments on the SEPA checklist will be posted on the project web page



Project Funding

The project is being funded by the City's Surface Water Utility and by the following:

1. King County Flood Control District – Flood Reduction Grant
2. Washington State Recreation and Conservation Office Land and Water Conservation Fund Grant
3. King County WaterWorks Grant



Questions and Comments

