



175TH STREET CORRIDOR IMPROVEMENTS PROJECT

Online Webinar

Corridor and Intersection Design Concepts

July 29, 2020



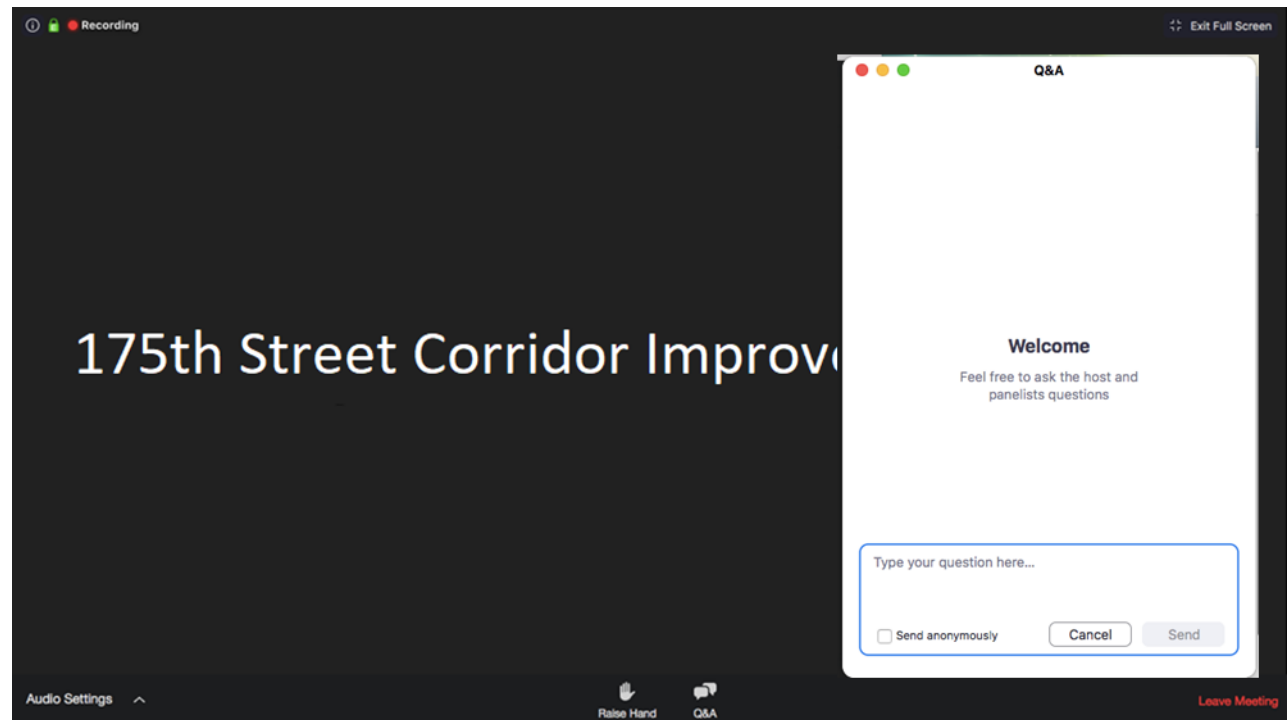
175TH STREET CORRIDOR IMPROVEMENTS PROJECT

shorelinewa.gov/175corridor

WEBINAR ZOOM FUNCTIONALITY

Attendees will remain muted

To submit a question, click on the Q&A icon





175TH STREET CORRIDOR IMPROVEMENTS PROJECT

shorelinewa.gov/175corridor

FOR TODAY...

Technical difficulties?

Call Candice at **(206) 519-5220** or
email **cplendl@enviroissues.com**

For project updates, visit

shorelinewa.gov/175corridor



MEETING AGENDA

6:00 p.m. – Welcome & introductions

6:05 p.m. – Presentation

6:35 p.m. – Q&A

6:55 p.m. – Thank you & wrap up



175TH STREET CORRIDOR IMPROVEMENTS PROJECT

shorelinewa.gov/175corridor

PROJECT TEAM STAFF

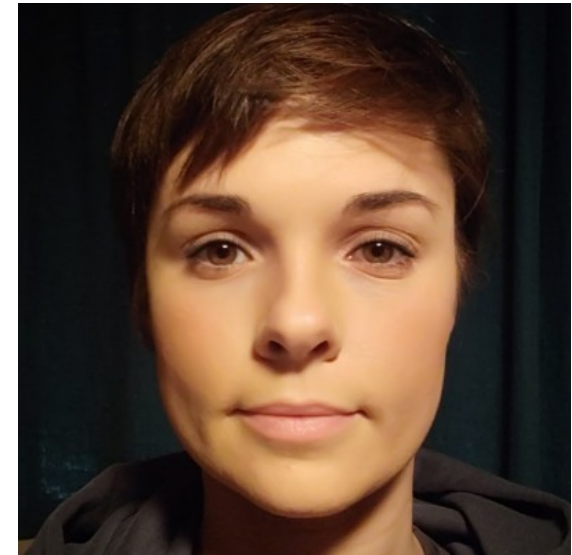
City of Shoreline



Leif Johansen, P.E.
Engineer II – Capital Projects
Project Manager



Tricia Juhnke
City Engineer



**Kendra Dedinsky,
P.E., P.T.O.E**
City Traffic Engineer



PROJECT TEAM STAFF

Consultant team



Dan Hansen
Consultant Team Project
Manager, Perteet



Brianne Ross, P.E.
Consultant Team Deputy
Project Manager, Perteet



Tara Olsen
Traffic Consultant, WSP



175TH STREET CORRIDOR IMPROVEMENTS PROJECT

shorelinewa.gov/175corridor

PROJECT TEAM STAFF

Consultant team



Jim Howard

Landscaping and Urban
Design Consultant, HBB



Steve Reinhart

Right of Way Consultant,
UFSRW



Kristine Edens

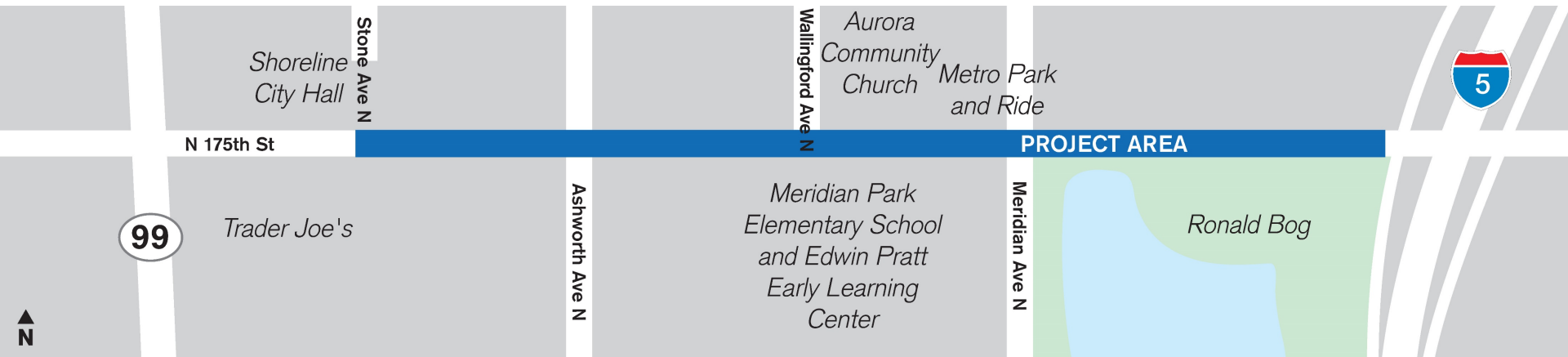
Outreach Consultant,
Envirolssues



175th STREET CORRIDOR IMPROVEMENTS PROJECT

shorelinewa.gov/175corridor

175th STREET CORRIDOR



Visit the online engagement and survey site

175corridor.participate.online



175TH STREET CORRIDOR IMPROVEMENTS PROJECT

shorelinewa.gov/175corridor

WHAT WE HEARD

WHAT'S MOST IMPORTANT TO YOU?

We want to know what is most important to you to guide our early design work.


For each street improvement topic, please mark along the arrows to indicate the level of importance to you.

Less important to me.


I don't feel that this is worth additional costs or potential impacts

More important to me.


I feel strongly that this is needed, even if it involves additional costs or potential impacts

Improving pedestrian walkability 
(sidewalks, landscape buffers, ADA accessibility, wheelchair ramps, crosswalks, pedestrian crossing signals)




Improving bus transportation 
(travel speed, ease of use, timeliness, bus stop improvements)




Improving bike facilities 
(continuous bike pathways, separation from cars, proximity to 175th Street)




Improving flow of traffic 
(reducing congestion, ability to make turns safely)




Improving transportation safety 
(controlling speeds, reducing collisions)



Improving landscaping character 
(types of trees, shrubs, and other plantings)



Creating a sense of place 
(art, pedestrian lighting, special site furnishings, special paving and wall treatments)





EVALUATION CRITERIA



Pedestrian walkability



Bus transportation



Bike facilities



Traffic flow



Transportation safety



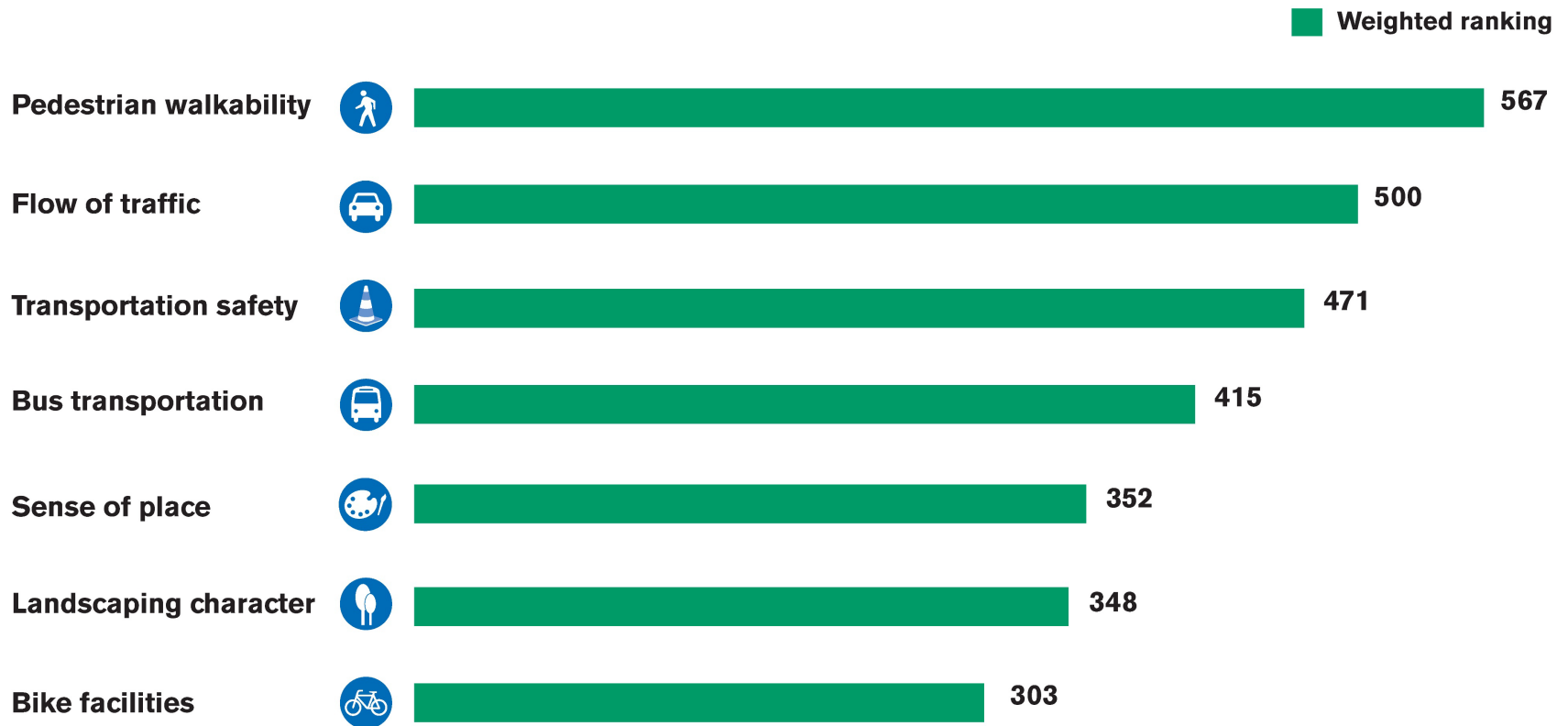
Landscaping



Sense of place



WHAT WE HEARD





INITIAL PROJECT ANALYSIS



- Traffic



- Safety



- Existing facilities



- Accessibility for all users



- City goals



TRAFFIC ON THE CORRIDOR IN 2040

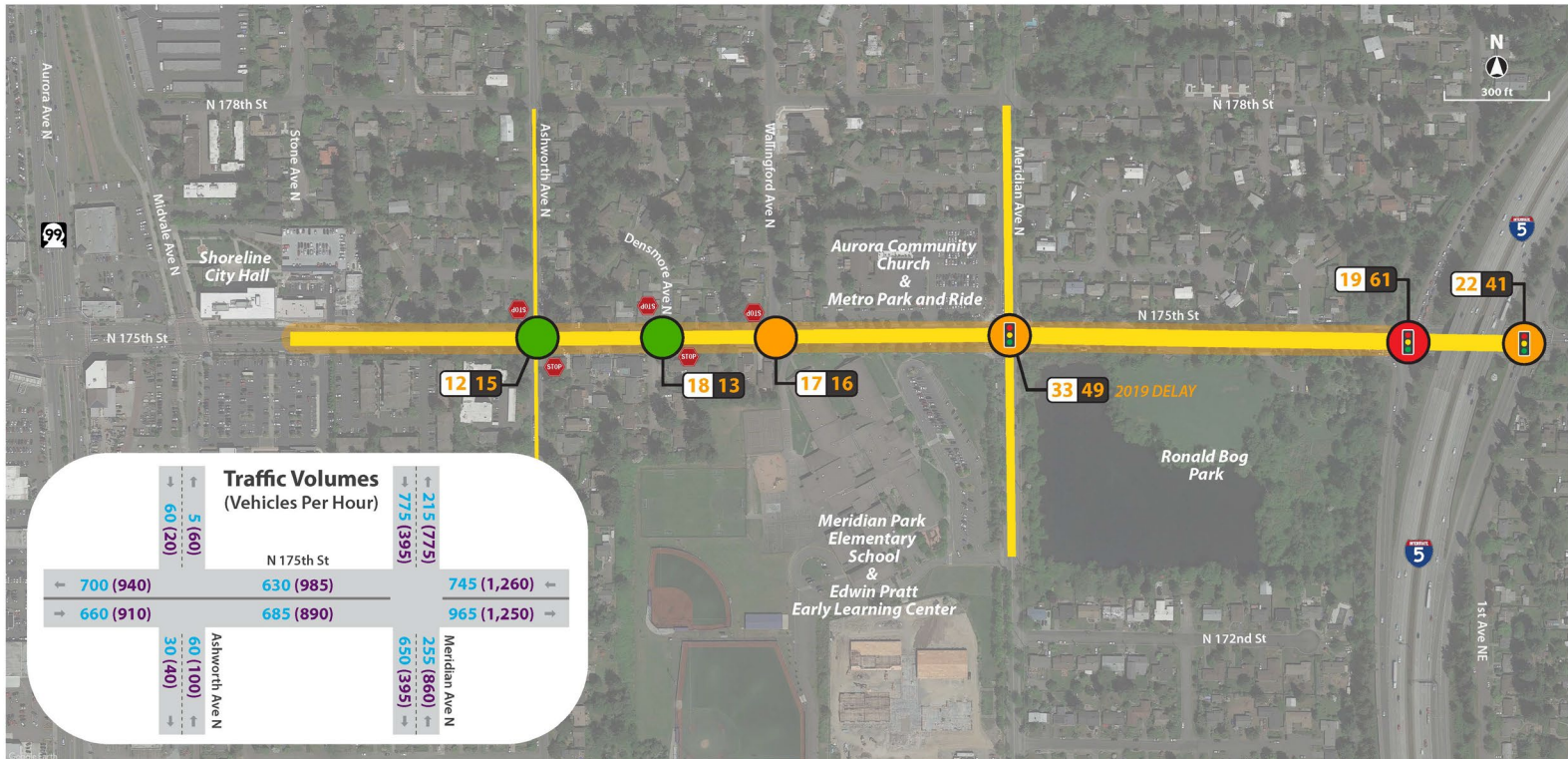
- 11% increase in traffic volumes
- More delay at Meridian and 175th intersection exceeds the City's Level of Service standard of D if no improvements are made
- Increase in delay at I-5 intersections



175TH STREET CORRIDOR IMPROVEMENTS PROJECT

shorelinewa.gov/175corridor

TRAFFIC ON THE CORRIDOR in 2019



175th Street Corridor Improvements Project 2019 Traffic Volumes, LOS, and Seconds of Delay at Study Intersections

Counts taken: March 2019

LEGEND

- Traffic Signal
- Stop Sign
- Project Limits

PM Peak Level of Service (LOS) (how well the intersection operates)

- A, B
- C, D
- E, F

Seconds of Delay (to get through the intersection)



Traffic Volumes

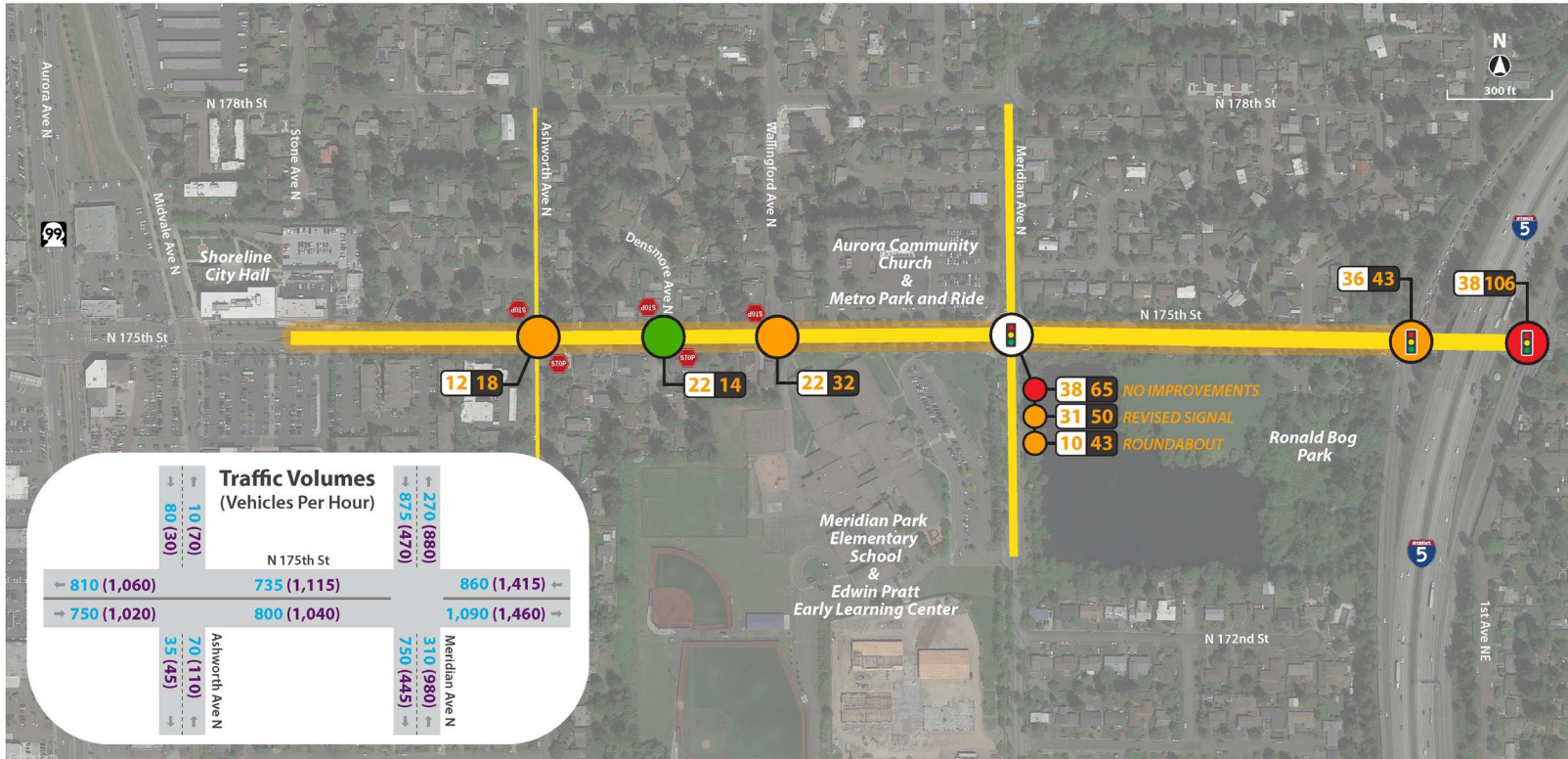
- 10 AM Peak (7:30–8:30 AM)
 - (40) PM Peak (4:45–5:45 PM)
- High Low



175TH STREET CORRIDOR IMPROVEMENTS PROJECT

shorelinewa.gov/175corridor

TRAFFIC ON THE CORRIDOR IN 2040



175th Street Corridor Improvements Project
2040 Traffic Volumes, LOS, and Seconds of Delay at Study Intersections

- LEGEND**
- Traffic Signal
 - Stop Sign
 - Project Limits

- PM Peak Level of Service (LOS)**
 (how well the intersection operates)
- A, B
 - C, D
 - E, F

- Seconds of Delay**
 (to get through the intersection)
- AM Peak PM Peak

- Traffic Volumes**
- 10** AM Peak (7:30–8:30 AM)
 - (40)** PM Peak (4:45–5:45 PM)
- High Low



STANDARD CORRIDOR DESIGNS



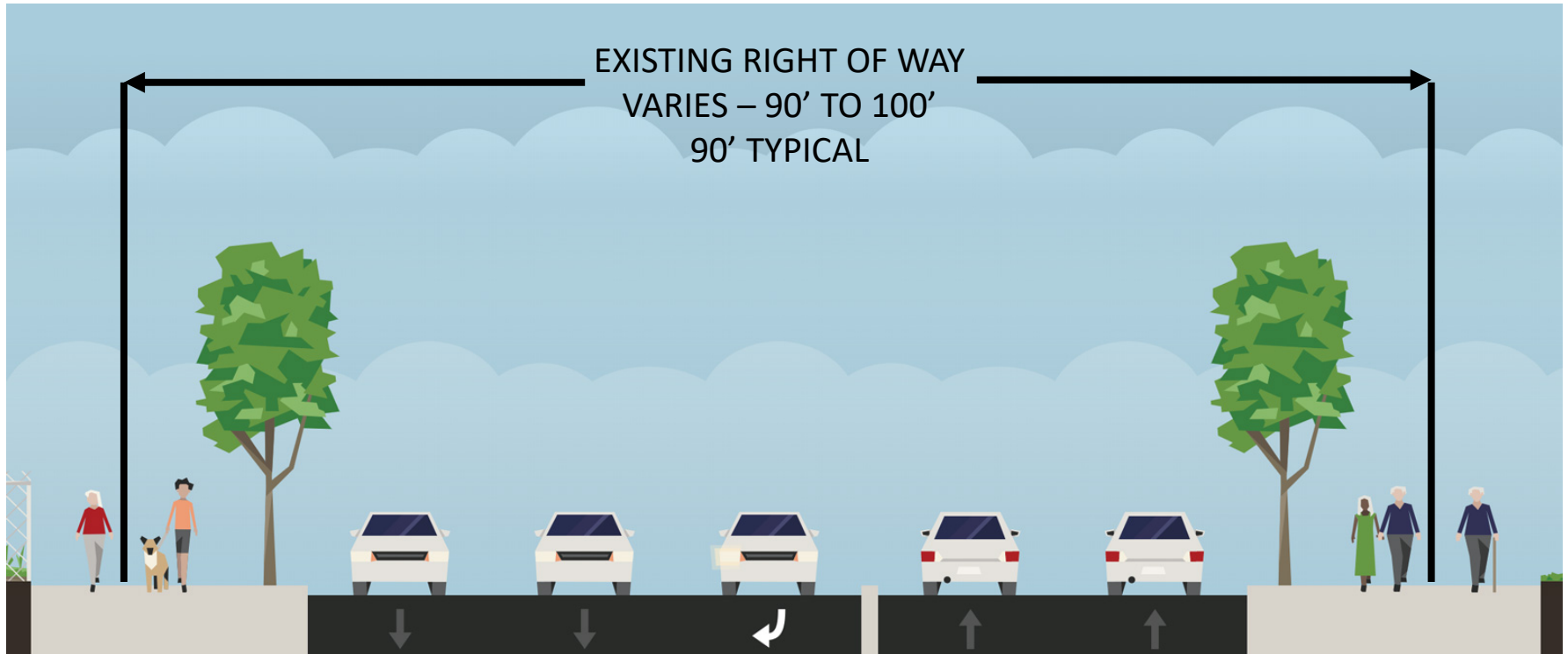
Example roadway median with hardscape and an existing image of sidewalks on the corridor.



175TH STREET CORRIDOR IMPROVEMENTS PROJECT

shorelinewa.gov/175corridor

MERIDIAN AVE N TO I-5



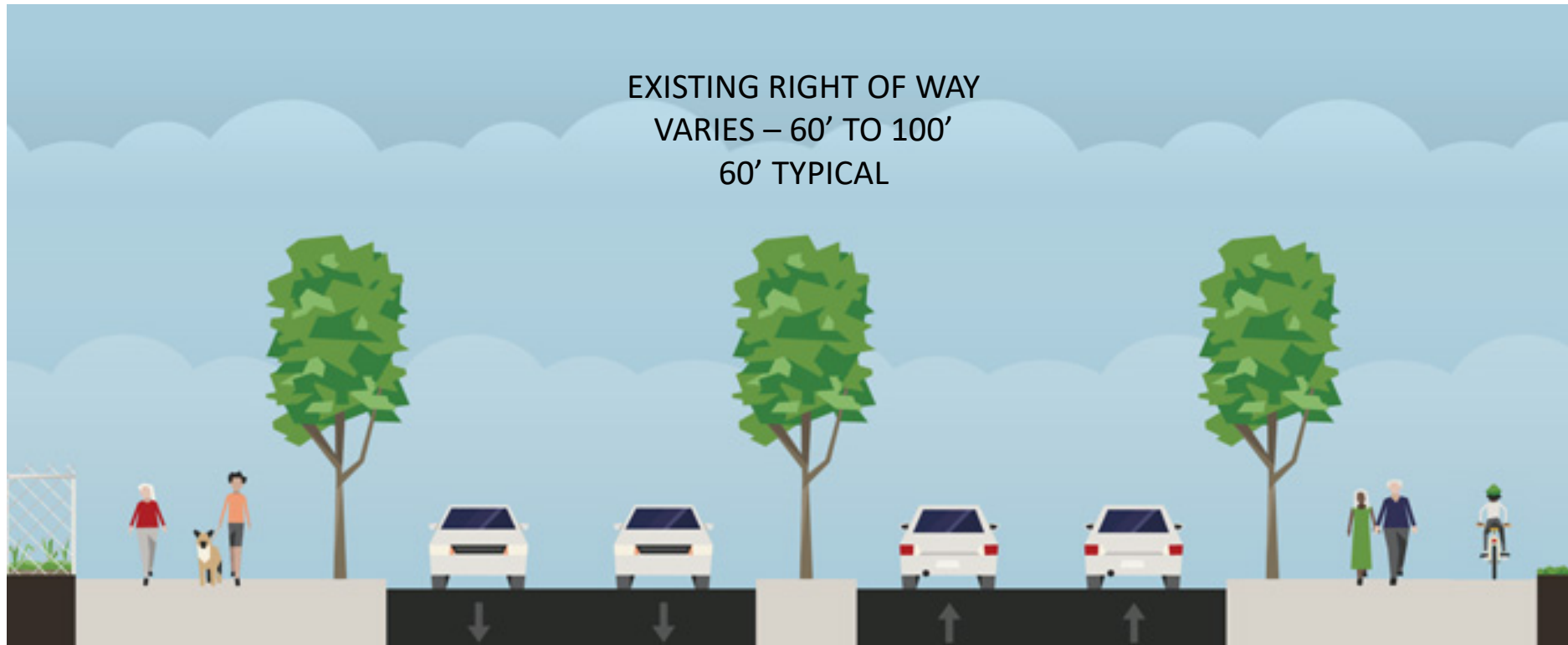


175TH STREET CORRIDOR IMPROVEMENTS PROJECT

shorelinewa.gov/175corridor

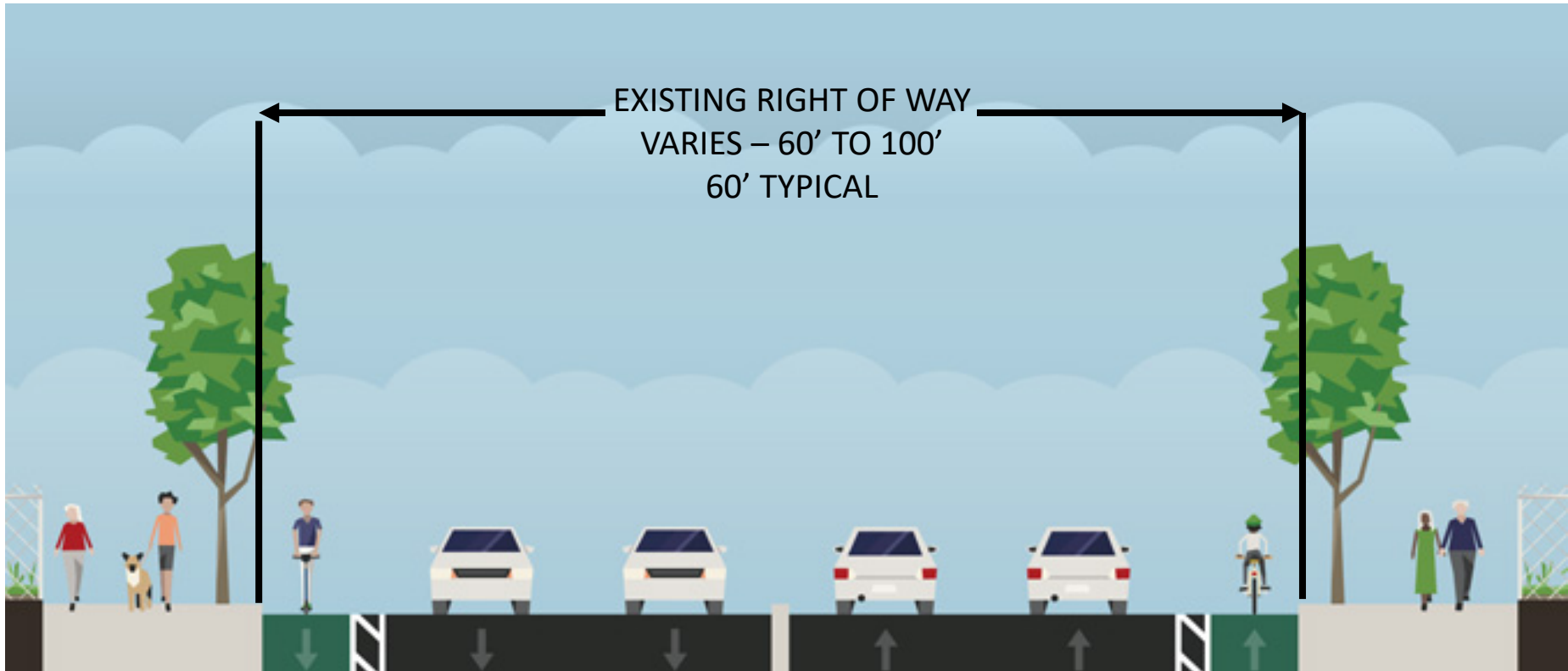
CORRIDOR DESIGN CONCEPT A : SHARED-USE PATH

EXISTING RIGHT OF WAY
VARIES – 60' TO 100'
60' TYPICAL





CORRIDOR DESIGN CONCEPT B : BUFFERED BIKE LANE





175TH STREET CORRIDOR IMPROVEMENTS PROJECT

shorelinewa.gov/175corridor

CORRIDOR DESIGN CONCEPT A : SHARED-USE PATH



CORRIDOR DESIGN CONCEPT B : BUFFERED BIKE LANE





EXISTING CONDITIONS AT THE MERIDIAN AND 175TH INTERSECTION





PROS AND CONS OF A ROUNDABOUT



Typical pros:

- Improved safety
- Reduced delay
- Reduced air and noise pollution
- Low maintenance cost

Typical cons:

- Unfamiliar crossing and driving experience
- More space
- Complicated construction phasing



EXAMPLE ROUNDABOUTS IN NEARBY CITIES



Two-lane roundabout in Lynden, WA.

Source: Google Maps



Two-lane roundabout in Covington, WA.

Source: Google Maps



Two-lane roundabout in Lacey, WA looking west.

Source: Google Maps



Two-lane roundabout in Olympia, WA looking west.

Source: Google Maps



PROS AND CONS OF A SIGNALIZED INTERSECTION

Typical pros:

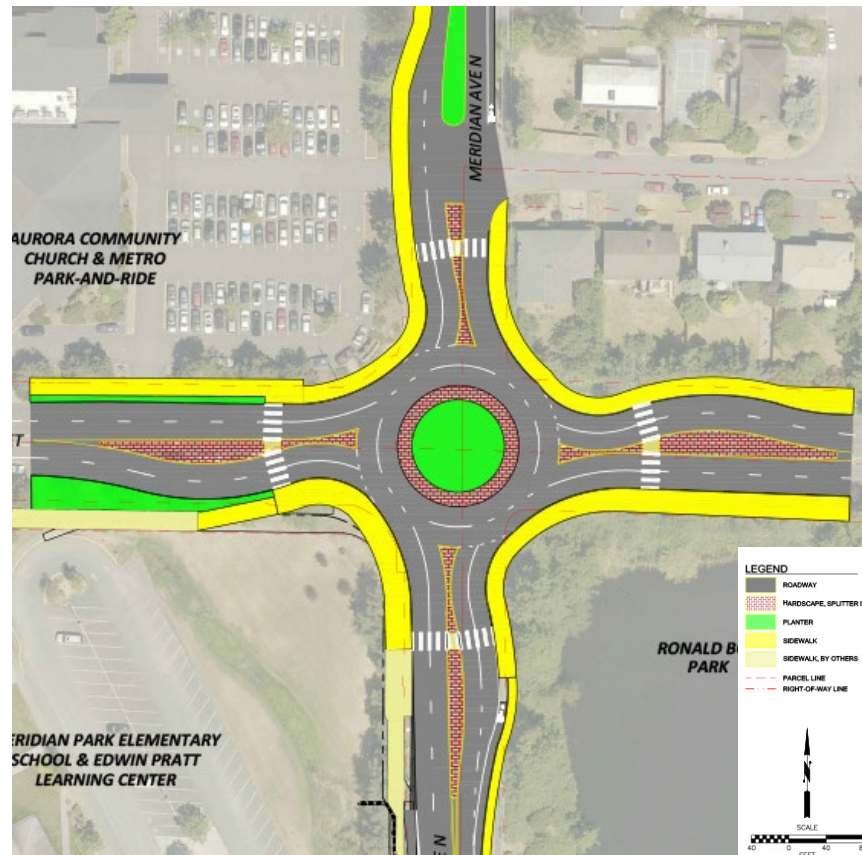
- Familiar driving experience
- Orderly movement
- Clear guidance for crossing

Typical cons:

- High maintenance cost
- Power outages
- Off-peak delay
- More conflict points/higher speeds



ROUNDBABOUT INTERSECTION AT 175TH AND MERIDIAN

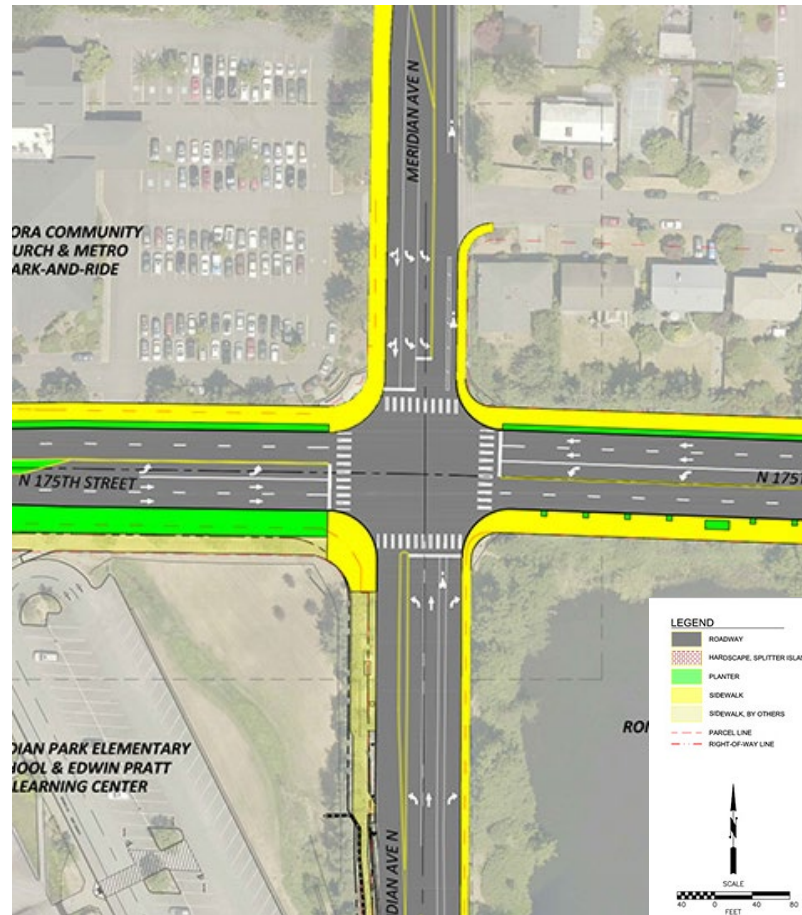




175TH STREET CORRIDOR IMPROVEMENTS PROJECT

shorelinewa.gov/175corridor

SIGNALIZED INTERSECTION AT 175TH STREET AND MERIDIAN AVE N





175TH STREET CORRIDOR IMPROVEMENTS PROJECT

shorelinewa.gov/175corridor

ROUNABOUT INTERSECTION AT 175TH AND MERIDIAN

LOW

MEDIUM

HIGH



SIGNALIZED INTERSECTION AT 175TH STREET AND MERIDIAN AVE N

LOW

MEDIUM

HIGH



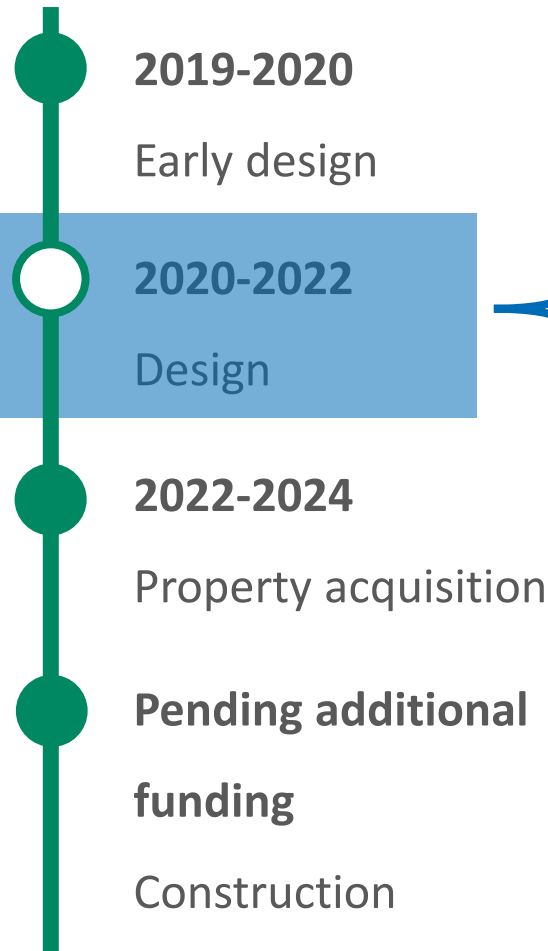


175TH STREET CORRIDOR IMPROVEMENTS PROJECT

shorelinewa.gov/175corridor

PROJECT TIMELINE

Public engagement timeline



PHASE 1 Existing Conditions & Information Gathering	PHASE 2 Design Concepts & Evaluation Criteria	PHASE 3 Preferred Concept Design
2019 ✓ APRIL <ul style="list-style-type: none"> Initial studies completed ✓ APRIL - MAY <ul style="list-style-type: none"> Stakeholder interviews Property owner/tenant drop-in session Online and in-person open house 	2020 ✓ SPRING <ul style="list-style-type: none"> Design concepts released ○ SPRING/SUMMER <ul style="list-style-type: none"> Coordination with property owners and other stakeholders Online engagement and survey site and webinar 	2020/2021 ○ WINTER <ul style="list-style-type: none"> Preferred design concept released 30% design milestone ○ WINTER <ul style="list-style-type: none"> Online open house and survey Coordination with stakeholders and property owners

We are here!



- ✓ Completed technical milestones
- ✓ Completed outreach milestones
- Incomplete technical milestones
- Incomplete outreach milestones





175TH STREET CORRIDOR IMPROVEMENTS PROJECT

shorelinewa.gov/175corridor

VISIT OUR ONLINE ENGAGEMENT AND SURVEY SITE

Online Engagement and Survey Site | July 6 – August 9

Select Language ▼
Powered by [Google](#) Translate


175TH STREET CORRIDOR IMPROVEMENTS PROJECT

WELCOME PROJECT OVERVIEW SURVEY: Corridor and intersection design concepts NEXT STEPS

WELCOME

Welcome to the Shoreline 175th Street Corridor Improvements Project online engagement and survey site! The information we share on this site is the same information that we'll share at the July 29th online public meeting (webinar).

The City of Shoreline plans to improve N 175th Street between Stone Avenue N and I-5, making it easier and safer for people walking, using a wheelchair, pushing a stroller, biking, driving, and taking transit. Since engaging the community in spring 2019, we have developed two design concepts for the corridor. We have also developed two design concepts for improvements to the intersection at N 175th Street and Meridian Avenue N: a roundabout intersection option and an improved signalized intersection option. The concepts are based on the feedback we received from people who live along the corridor, local businesses, community organizations, and people who travel on N 175th Street.



N 175th Street looking west

Share your feedback on the design concepts and how you think the designs rank against the key evaluation criteria. **This is the most critical stage of the process for you to let us know your thoughts on the concepts and what you think is missing.**

How to use this online engagement and survey site +

July 6 – August 9, 2020

shorelinewa.gov/175corridor

or visit directly at

175Corridor.participate.online



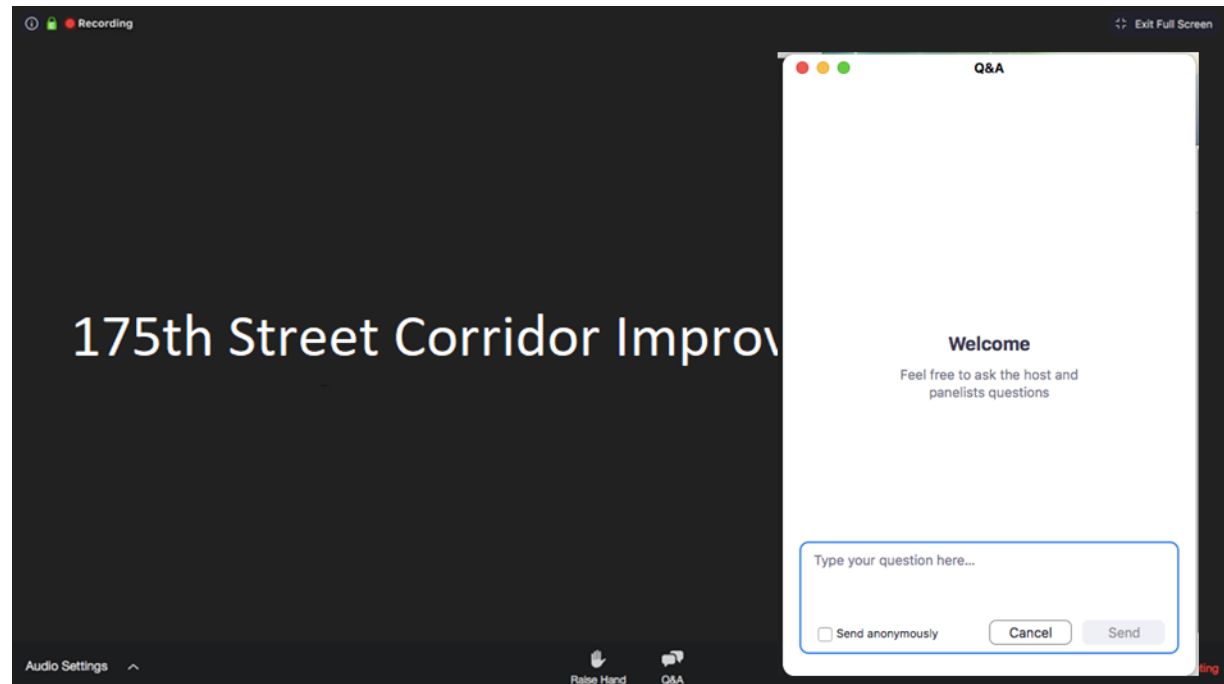
175TH STREET CORRIDOR IMPROVEMENTS PROJECT

shorelinewa.gov/175corridor

WEBINAR ZOOM FUNCTIONALITY

Attendees will
remain muted

Click on the Q&A
icon to submit a
written question





175TH STREET CORRIDOR IMPROVEMENTS PROJECT

THANK YOU!

For questions or comments, contact:

Leif Johansen, P.E. Capital Projects Manager

ljohansen@shorelinewa.gov

(206) 801-2489