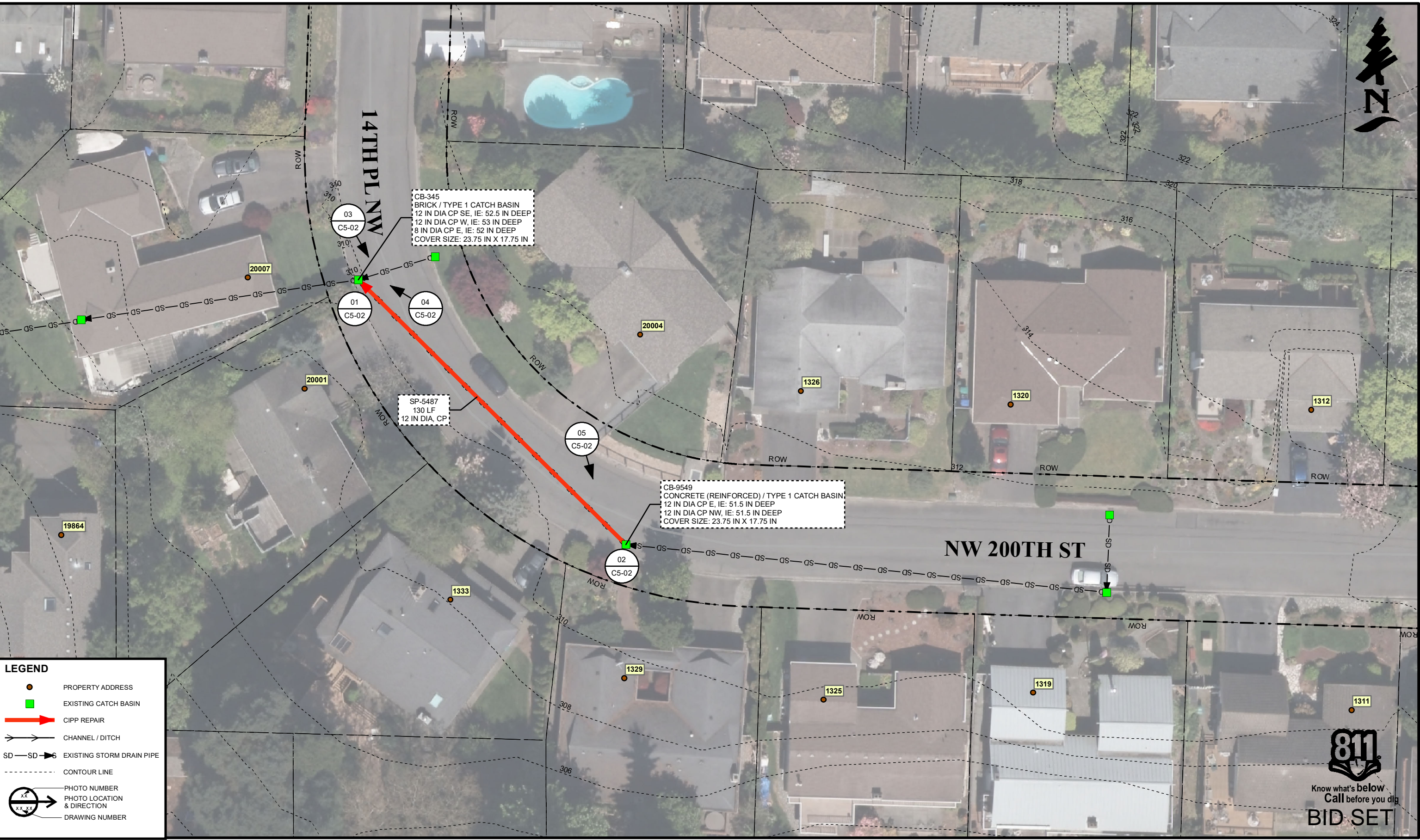




CB-345
BRICK / TYPE 1 CATCH BASIN
12 IN DIA CP SE, IE: 52.5 IN DEEP
12 IN DIA CP W, IE: 53 IN DEEP
8 IN DIA CP E, IE: 52 IN DEEP
COVER SIZE: 23.75 IN X 17.75 IN

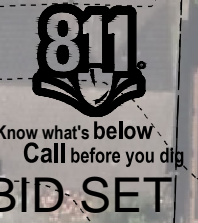
SP-5487
130 LF
12 IN DIA, CP

CB-9549
CONCRETE (REINFORCED) / TYPE 1 CATCH BASIN
12 IN DIA CP E, IE: 51.5 IN DEEP
12 IN DIA CP NW, IE: 51.5 IN DEEP
COVER SIZE: 23.75 IN X 17.75 IN



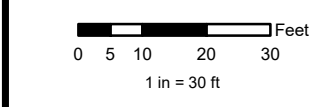
LEGEND

- PROPERTY ADDRESS
- EXISTING CATCH BASIN
- CIPP REPAIR
- CHANNEL / DITCH
- EXISTING STORM DRAIN PIPE
- CONTOUR LINE
- PHOTO NUMBER
PHOTO LOCATION & DIRECTION
- DRAWING NUMBER



3/11/2020 11:26:04 AM \\s\shoreline.wa.us\data\Users\malmaroo\Desktop\New folder\16.mxd

MARK	REVISION DESCRIPTION	BY	APP.	DATE



DRAWN BY MA
 DESIGN BY MA
 CHECK BY LB
 PROJ MGR LB

CITY OF SHORELINE
2020 CIPP STORMWATER PIPE REPAIR PROJECT
14TH PL AND NW 200TH ST, PLAN
SCHEDULE A

DRAWING NO.	C5-01
PROJECT NO.	9495
FED AID NO.	N/A
DATE:	03/17/2020
SHEET NO.	16 OF 54