



CURRENTS

News from the City of Shoreline Volume 22 No. 5

July-August 2020

City's response efforts to COVID-19

AT THE TIME of printing, King County was in Phase 2 of its reopening. A successful safe start depends on everyone doing their part. As we gradually reopen, it is still safest to stay home. If you do go out in public, face coverings are required for all individuals 5 and older if you are in an indoor public space or outdoors and unable to maintain six feet of distance. If you are ill or exhibiting symptoms of COVID-19, STAY HOME.

City Operations

While City Hall and City facilities remain closed to the public, we are open for service. Beginning June 1, we were able to return to full staffing for more City services. Prior to that, many City services were running at 50% operations, such as our field crews, in order to meet Public Health guidelines. Our permit department is accepting new and working to complete permit applications; we are conducting inspections; our street, parks, utility, and maintenance crews are out in the field; and many of our other staff are working from home. Our recreation staff are focused on leading a modified summer day camp program to support families and children in the Shoreline community.

The City will continue to follow guidance from the Governor's office and Public Health on when and how to reopen facilities safely. We will post information about the reopening of public facilities at shorelinewa.gov/covid.

Small Business Support Program

On June 8, the Shoreline City Council approved establishing a Small Business Support Program (SBSP) to support Shoreline small businesses impacted by COVID-19. Funding for the \$500,000 grant fund comes from State allocated Federal CARES Act Coronavirus Relief Funds (\$410,000) and funds allocated by the King County Council for local business support (\$90,000).

Due to high demand, many Shoreline businesses were unable to access initial CARES Act or other funds before programs closed. Others have found the impacts to their businesses from the COVID-19 emergency is much larger than the relief funding made available so far. To help address this shortfall, the City developed the SBSP to support Shoreline small businesses.

Grant funds are for small businesses, which were defined as businesses with fewer than 25 employees. Businesses meeting all the eligibility criteria may receive up to \$20,000 in grant funding. We received 70 applications for grant funding. We anticipate funds will be distributed later this month.

For more information, visit shorelinewa.gov/c19bizresponse.

continued on page 3



Pool closure recommendation

Page 3



Police training and policies

Page 6



Summer events and activities

Page 7



**MAYOR
WILL HALL**
(206) 373-1630
whall@shorelinewa.gov



**DEPUTY MAYOR
KEITH SCULLY**
(206) 735-9030
kscully@shorelinewa.gov



SUSAN CHANG
(206) 373-1639
schang@shorelinewa.gov



DORIS FUJIOKA McCONNELL
(206) 731-9323
dmcconnell@shorelinewa.gov



KEITH McGLASHAN
(206) 330-3948
kmcglashan@shorelinewa.gov



CHRIS ROBERTS
(206) 391-2733
croberts@shorelinewa.gov



BETSY ROBERTSON
(206) 396-5807
broberstson@shorelinewa.gov

CONTACT ALL COUNCILMEMBERS:
(206) 801-2213
council@shorelinewa.gov

CITY COUNCIL MEETINGS:
Mondays at 7:00 p.m.
Shoreline City Hall, Council Chamber
Agendas: shorelinewa.gov/councilmeetings

Council decides not to place park improvements bond on November ballot

Council may place measure on ballot in 2021

ON JUNE 15, City Council decided to hold off on placing a park bond measure before voters in 2020. Council reviewed several options for a park bond to fund park improvements, new park amenities, and property acquisitions for new park space. Council agreed that with so much uncertainty at this time due to the COVID-19 pandemic and associated economic downturn, placing a measure on the ballot this year was not prudent. Council asked staff to come back in the fall with options for placing a park bond renewal measure on the ballot in 2021.

The 2006 park bond will be completely paid off by the end of 2021. The 2006 bond paid for park improvements at a number of Shoreline parks and recreational facilities, including Cromwell, Richmond Beach Saltwater, Hamlin, and Shoreline A and B Soccer Fields.

In November 2019, the City placed a bond measure on the ballot asking voters to fund park improvements and a new Aquatic, Recreation and Community Center. Although the measure received a majority "Yes" vote (54%) it did not receive the required 60% "Yes" vote to pass. During the Council Workshop earlier this year, Council asked staff to put together several options for a new bond measure for just park improvements and park property acquisitions. As staff worked on the different options, we were plunged into a global pandemic and accompanying economic downturn making placing a bond measure on the ballot this year too difficult.

Shoreline residents care deeply about their parks. As we have all stayed close to home over these past few months, we realize the importance of our local parks and trails. The City Council is committed to continuing to invest in our park system.

City Council, Boards, Commissions, and Public Hearings will continue to be held remotely

DUE TO the COVID-19 pandemic and directives from the Governor's Office and Public Health authorities, City meetings are being held remotely via Zoom. The purpose of conducting remote or "virtual" meetings and hearings is to limit the gathering of people together and help prevent the spread of COVID-19.

Members of the public can attend the meetings in real-time. They can also provide oral public comment or testimony online or by calling into the meeting.

The Governor's four-phased approach to "reopen" Washington State that slowly eases physical distancing protective measures won't allow for customer-facing government services, which includes meetings, to occur until Phase 3. Movement to each new phase is contingent on reduction in COVID-19 cases and other objective standards. Accordingly, much uncertainty remains regarding the timing of the phases. When meetings are allowed again, they most likely will still require strict protective measures such as mandatory social distancing, the use of face coverings, and strict hygiene protocols.

Therefore, until such time as it is deemed safe to hold in-person public meetings, the City Council; Planning Commission; Parks, Recreation and Cultural Services Board; and public hearings will be held remotely.

To learn more about how to listen to and provide testimony for these meetings, visit each meeting's calendar entry at shorelinewa.gov/calendar.

City Manager recommends permanently closing Shoreline Pool a year early

DUE TO SIGNIFICANT BUDGET CONSTRAINTS resulting from the economic downturn brought on by the COVID-19 Pandemic, the City Manager is proposing that the Shoreline Pool be permanently closed a year earlier than anticipated. Council discussed the recommendation at its July 13 meeting.

The COVID-19 pandemic has affected individuals, families, and organizations at every level. The City is no exception. We have experienced significant financial and operational impacts since the start of the pandemic. Our forecast shows a more than \$6.2 million (16 %) loss in budgeted revenue in 2020. If the economic recovery is protracted, our loss of revenue could extend well into the future. We are currently forecasting additional revenue losses of approximately \$2.15 million in 2021, \$1.54 million in 2022, and ongoing losses of between 2% to 3% every year over the next eight years. We anticipate being able to address the 2020 shortfall through cost savings, expenditure reductions, FEMA funding to address COVID-19 expenditures, and higher than projected revenues collected in 2019. However, moving forward, absent more federal assistance for local governments, we will have to make tough economic decisions that could impact current City programs and services.

The Shoreline Pool needs significant repairs, maintenance, and upgrades to keep it operational. The annual costs to operate the pool exceed the revenue generated from swim programs, such as swim lessons and open swim, aquatic classes, and pool rentals, by approximately \$800,000 to \$850,000 a year. This difference is paid out of the City's general fund. Because of the COVID-19 Pandemic and the Governor's Stay Home, Stay Healthy order, the Shoreline Pool has been closed since March. If the pool were able to reopen at some time later this year, it would need to follow public health guidelines for social distancing, sanitation, and capacity limitations, among other things. This could lead to increased costs and substantially reduced revenue, requiring an even larger subsidy from the City's general fund.

After years of providing emergency fixes to keep the aging facility open, the City came to the difficult decision earlier this year to close the Shoreline Pool after the summer of 2021. The Shoreline Pool is a popular facility used by the Shoreline and regional community. We realize that it is an important community resource and closure will cause disruption to those who use it. Unfortunately, the facility has reached the end of its useful life. Faced with the pandemic related restrictions placed on pool operations, the age and maintenance needs of the pool, and our current budget shortfalls, we need to make tough economic choices. Closing the Shoreline Pool a year early will help save other ongoing programs that might otherwise need to be cut in order to meet the legal requirement to have a balanced budget.

The City placed a bond measure on the November 2019 ballot asking voters to fund a new Aquatic, Recreation and Community Center. Although the measure received a majority "Yes" vote (54%) it did not receive the required 60% "Yes" vote to pass. The cost of a new facility was a significant concern for many residents. Many people asked the City to look at ways to collaborate with other agencies or private organizations to help bring down those costs. Over the next few years, we will look at several options for a new facility, including collaborating with other organizations in a joint venture. We hope to bring forward some type of proposal for a new Shoreline aquatic facility in the future.

MORE INFORMATION:

Parks Director Eric Friedli, efriedli@shorelinewa.gov

City's response effort to COVID-19

continued from page 1

Human Services Support Program

In addition to the Small Business Support Program, the City also established a \$300,000 Human Services Support Program.

Over the past few months, the City has been working closely with community partners to create a robust and comprehensive system for ensuring that everyone in Shoreline has access to food throughout this crisis. The City allocated \$185,000 of the Human Services funding to support access to food for Shoreline families. This includes money for Shoreline School District's Summer Sack Lunch and Breakfast Program; a Food Gift Card Program; and the Senior Center Meal Delivery Program.

The City also allocated \$115,000 to provide reimbursement to our human services agency partners for unplanned expenses related to personal protective equipment (PPE) and COVID-19 related cleaning supplies and activities. Covering all or a portion of those costs for the agencies will provide them with needed flexibility to use other funds to cover additional direct service or other unexpected and unplanned expenses.

MORE INFORMATION
shorelinewa.gov/covid

Sound Transit Online Open House

STRIDE BUS RAPID TRANSIT

See design updates and share your thoughts on Stride Bus Rapid Transit service coming to SR522 and NE 145th Street.

Participate in the online open house at:

sr522brt.participate.online



Food Waste

Both liquids and food waste negatively impact the recyclability of items. Vendors will reject recyclable materials if they smell rotting food and will send them to the landfill instead. “Empty, Clean and Dry” is the recycling mantra to remember. Be sure to empty any residual food or liquid and clean the container with a quick rinse or scrape. Give the container a few taps to get those last few drops of water before you toss it into your bin. Put food waste in your green food and yard waste cart for composting!

Dog Owners “Do Their Duty”, Even In Their Own Backyard

IT TURNS OUT, dog poop is not compost - it is raw sewage. Dog waste contains bacteria and parasites, like Giardia and roundworms, that can make dogs, humans, and other animals sick. These bacteria and parasites leach out of dog waste and can stay in the soil for years – or worse, can be tracked into your home by family members and pets! Kids and pets that play in the grass and on the ground are most at risk to coming into contact with these nasty germs.

Poop also pollutes our local waters. When it rains, stormwater carries dog poop from sidewalks, lawns and parks to local lakes, streams, and, eventually, Puget Sound. The bacteria in dog poop can make water unsafe for swimming and fishing. The U.S. Environmental Protection Agency says that even just two or three days of droppings from only 100 dogs in a 20-square-mile watershed can contribute enough bacteria and nutrients to temporarily close a bay to swimming and shellfish harvesting.



Pick up pet waste every time, even in your own backyard.

Scoop it, bag it, and throw it in the trash.

JOIN THE SHORELINE CLIMATE CHALLENGE!

THE CITY IS WORKING to reduce greenhouse gas emissions and fight climate change. We need your help! There are lots of actions you can take at home that will make a difference for our community today and in the future.

The Shoreline Climate Challenge makes it fun and easy to learn about and implement actions that will protect our natural environment, save you money, and improve your health and comfort. Actions are grouped into categories such as “Youth-Friendly” or “Renter-Friendly,” making it easy to find actions that fit your lifestyle and make the biggest impact for your household. Join friends, family and neighbors to form teams and earn points in this virtual competition with real world benefits. The Challenge runs through October 31, 2020, with special recognition for teams with the most points!

Get started with 4 simple steps!

- Visit ShorelineClimateChallenge.org.
- Create your household profile and view your current climate footprint.
- Create or join a team with friends, family or neighbors.
- Choose from a list of actions, earn points and start saving!

City staff are available for virtual group presentations and can answer any questions you may have

MORE INFORMATION:

Environmental Program Specialist Cameron Reed
(206) 801-2455, creed@shorelinewa.gov



148th Street Non-Motorized Bridge: Preferred Alternative Selected

ON JUNE 1, City Council selected preferred alternatives to the different options for the 148th Street Non-Motorized Bridge. Council approved options for the trail connection from 1st Avenue NE to the west end of the bridge, the type of bridge itself, and the connection from the east end of the bridge to the Shoreline South/148th Station and the Trail Along the Rail. Together, three selected options will represent the combined preferred alternative to move forward through design and construction. Council selected these options based on public input and the technical needs of the project. The options selected are:

West Trail Connection Preferred Option: Full Build-Out (North)

The Full Build-Out option will connect the bridge to 1st Avenue NE via a 16-foot shared path and planted buffer. The exact alignment is still being determined and the City is looking for ways to minimize impacts to trees and parking.

Bridge Structure Preferred Option: Tied Arch Bridge

The side-by-side arches and supporting cables of the Tied Arch bridge will create space and light for people using the bridge and those traveling nearby. The bridge will be wide enough for pedestrians and bicycles. The bridge will be built largely off-site, minimizing construction impacts over I-5.

East Bridge Landing Preferred Option: Direct Ramp

This ramp option provides the most direct access and the shortest pathway to the future Shoreline South/148th Station and the future Trail Along the Rail.

Next Steps

The combined preferred alternative will be developed further with the goal of having a completed preliminary design to share with the public at our next open house during the fall of 2020.

MORE INFORMATION

Project Manager *Lea Bonebrake*, lbonebrake@shorelinewa.gov, 206-801-2475
shorelinewa.gov/148thbridge

Sound Transit Light Rail Update

NE 185th Street and 5th Avenue NE Traffic Impacts

Sound Transit is continuing work at NE 185th Street and 5th Avenue NE near Shoreline Stadium. Drivers can expect traffic congestion while Sound Transit re-aligns 5th Avenue at NE 183rd Court. 185th is reduced to one lane for crews to complete the guideway for the future Shoreline North/185th Station. We suggest use the signed detour routes to avoid heavy traffic.

NE 195th Pedestrian Bridge Closure

The NE 195th Pedestrian Bridge is closed while construction occurs around it. Sound Transit has closed the bridge to install underground utilities on the east side of the bridge. While the bridge is closed, crews will build the abutment that will support the future light rail guideway underneath it. There is no access for pedestrians and bicyclists during this closure.

MORE INFORMATION

Subscribe to updates: soundtransit.org/subscribe

Report Issues: 24-hour construction hotline - 1-888-298-2395

ST Community Outreach: 206-398-5300, lynnwoodlink@soundtransit.org

City landscaping during COVID -19

WE KNOW THE MEDIANS

along Aurora are once again overgrown with weeds. This is upsetting for all of us. Our Grounds Maintenance crew did a lot of work last year on putting down weed barriers and cleaning up the medians along Aurora to make maintaining them easier, especially during the spring growing season. Unfortunately, this spring, during the growing season, we were all on lock down for two months due to the COVID-19 global pandemic. That included our Grounds Crew and the seasonal help we would usually have hired to support spring and summer maintenance. As much as we would like to will the weeds away, it takes people out in the field to do the work. We didn't have that this spring. From April 6 through May 31, only half our full-time Grounds Crew were able to work at one time and we had no seasonal help working. It has only been since June 1 that our Grounds crew has been fully staffed. Unfortunately, that means they will be playing catch up throughout the summer months to maintain the medians along Aurora and in other parts of the city.

We know it can be demoralizing for the community to see the medians along Aurora and other areas look the way they do. It is demoralizing for our Grounds Crew who put in a lot of time to get the medians prepared for the spring growing season and then not be able to maintain them as planned when they needed it most. We believe we have a good plan for properly maintaining the medians along Aurora and in other areas of the City. Had we not been hit by a pandemic, we believe residents would have seen that plan work this spring.

MORE INFORMATION

Grounds Maintenance Supervisor

Darron Callahan

(206) 801-2581

dcallahan@shorelinewa.gov

SHORELINE POLICE TRAINING AND POLICIES AROUND USE OF FORCE

OVER THE PAST SEVERAL WEEKS, we have received numerous questions about Shoreline Police training and policies, particularly around the use of force. While these questions are important any time, they have taken on particular importance in light of recent events. As we struggle to come to terms with our nation's history of systemic racism and often violent oppression, it is important for us to listen to the community and hear how different policies impact communities of color. Shoreline Police know they must continually work to gain and maintain the trust of the community, especially communities of color and other historically marginalized communities. Shoreline Police strive to treat everyone in a fair and objective manner.

Community dialogue around policing in Shoreline

Over the coming year, the City plans to facilitate a community dialogue around policing in Shoreline. We are still in the early planning stages, but we will use a variety of formats to try to engage as many people as possible, understanding that a large community meeting may not be possible for some time due to the current COVID-19 pandemic.

Shoreline contracts with King County Sheriff's Office for Police Services

The City of Shoreline contracts with the King County Sheriff's Office for its police services. Shoreline Police follow the policies of the King County Sheriff's Department. The King County Executive's Office negotiates the police guild (union) contract with the King County Police Officers' Guild. The Guild Contract includes negotiated agreements on working conditions and some of the provisions used in police oversight by the Office of Law Enforcement Oversight (OLEO). The current contract for

the King County Police Officers' Guild (labor contract) expires at the end of 2021; negotiations are scheduled to begin in the middle of next year.

If you would like to provide input on the contract negotiations, you can contact the King County Executive's Office at kcexec@kingcounty.gov or 206-263-9600.

Training

The Shoreline Police Department emphasizes de-escalation techniques to avoid the use of force. Shoreline's RADAR program, which stands for Response Awareness De-escalation and Referral, aims to decrease use-of-force incidents between police and individuals with behavioral health issues and/or developmental disabilities. Our officers receive 40 hours of Crisis Intervention Training with an annual mandatory refresher, which prepares them to assist people in crisis for emotional, developmental, or behavioral health reasons. The program has become a model for other law enforcement agencies. Additional de-escalation training teaches our officers techniques to calm tense encounters to reduce the potential for use of force.

Shoreline officers additionally go through eight hours of implicit bias training intended to make them aware of how to counter their own implicit biases and not let those biases impact their policing. The Shoreline Police command staff will continue to ensure Shoreline officers are trained in crisis intervention, de-escalation techniques, and implicit bias. The Shoreline City Council has supported these efforts through additional training funds.

Body Cameras

Shoreline Police Officers do not currently wear body-worn cameras. King County Sheriff Mitzi Johanknecht has shared her support for officers wearing body-worn cameras and has taken steps to make a budget request



for body-worn cameras during King County's 2021-2022 budget process. The City of Shoreline is supportive of this change and will be actively working with King County to see that this budget request is approved.

Police Policies and Accountability

Residents have asked what Shoreline Police policies are related to Campaign Zero's "8 Can't Wait" initiative. The Sheriff's General Operation's Manual outlines its use of force policies, which are addressed in Chapter 6. The King County Sheriff's Office asked Campaign Zero to conduct an audit of its policies and provide feedback in relation to the eight policies. On June 11, 2020, Campaign Zero determined that six of the policies were being met and that two needed clarification (Duty to Intervene and Verbal Warning Before Shooting). King County Sheriff Mitzi Johanknecht and leaders of the King County Police Officer's Guild quickly agreed to make the needed changes to clarify the policies. They are working on making those clarifications as quickly as possible.

To learn more about police use of force policies and accountability, including how the King County Sheriff's Office measures up to Campaign Zero's 8 Can't Wait initiative, visit shorelinewa.gov/police.

MORE INFORMATION
shorelinewa.gov/police

CELEBRATE SUMMER

SHORELINE TURNS 25!

The City of Shoreline turns 25 this year! While it might seem like there isn't much to celebrate in 2020, it is important to reflect on how far we have come as a community over the past 25 years. We have met many challenges with a strong sense of community spirit and Shoreline values. We have found that we are stronger when we act together to achieve a common goal. This community spirit will continue to move us forward, especially during these tough times.

We want to thank everyone who has helped to make Shoreline the amazing community it is today. Shoreline has a lot to be proud of and will continue to be a regional leader into the future.

CITYWIDE EVENTS

LUNCHTIME CONCERT

MIKEY MIKE THE RAD SCIENTIST
Tuesday, Aug. 18, 12:00 p.m.
YouTube live

BINGO

New themes every week for eager explorers! Find all of the cards at shorelinewa.gov/summer2020.

YARD SIGN ART

Anyone interested in participating will be given a yard sign to decorate. Post your art projects in your yard or in the Park at Town Center along the Interurban Trail!

CAN CASTLE CONTEST

Participants are encouraged to register a team filled with friends, coworkers, neighbors and/or family to create a structure made of canned, jarred and boxed foods. Following the contest, food available for donation will be scheduled for pick up or drop off. Donations will be given to Hopelink in Shoreline.

CELEBRATE YOUR NEIGHBORS

Shoreline Has Gratitude!

Throughout the COVID-19 emergency, many of our dedicated neighbors have kept our community going. Whether they work in a hospital or grocery store, deliver mail, or volunteer to distribute meals, everyone who has risked their health for the sake of others' safety deserves to be recognized.

Do you have a neighbor or know someone who lives and/or works in Shoreline who has made a difference? Would you like to share a story about your own work during the last several months? Please contact Constance Perenyi, cperenyi@shorelinewa.gov, so we can follow up. Throughout the month of August, the City of Shoreline will post short profiles on our Facebook page so we can celebrate our neighbors who make Shoreline a caring place to live.

MORE INFORMATION

Neighborhoods Coordinator Constance Perenyi
cperenyi@shorelinewa.gov

Shoreline Has Talent!

In the last few months of the COVID-19 emergency, you may have gotten to know your neighbors better than you did before. On many Shoreline blocks, neighbors have reached out to help each other, offering to pick up groceries or check with people who live alone. They have helped build resilient neighborhoods, ones that can survive, adapt, and thrive in the face of change.

Getting to know each other and building trust is the first step. Next, you can learn about the skills in your neighborhood. In the event of a disaster such as an earthquake, it is likely that your closest neighbors will be your first responders. Does someone on the block speak multiple languages that can help translate? Do you live next door to a nurse or EMT? Is a neighbor tech savvy or handy with power tools?

Work with your neighbors to create a talent bank to inventory your block's combined skills and resources. Download a worksheet template and learn more on the City's website at shorelinewa.gov/nno.

MORE INFORMATION

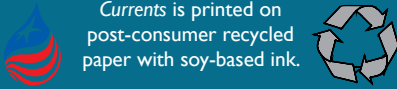
Neighborhoods Coordinator Constance Perenyi, cperenyi@shorelinewa.gov
Emergency Management Coord. Jason McMillan, jmcmillan@shorelinewa.gov

DATES & INFO: SHORELINEWA.GOV/SUMMER2020

July - August 2020 Vol. 22 No. 5
CITY OF SHORELINE
CURRENTS

Currents is produced by the
Shoreline City Manager's Office
Contact the City:
(206) 801-2700

**Alternate formats
available upon request**



Web: shorelinewa.gov

 facebook.com/shorelinewa

 twitter.com/shorelinewagov

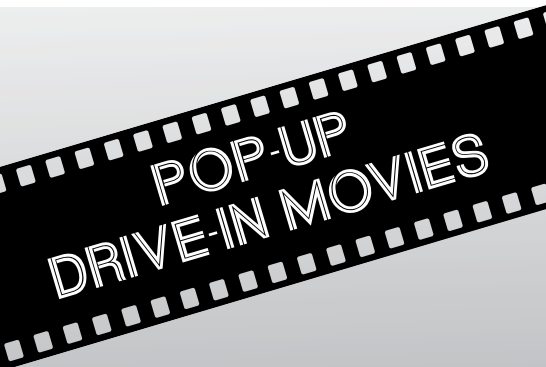
 youtube.com/cityofshoreline



17500 Midvale Avenue N
Shoreline, WA 98133-4905

PRSR STD
US Postage
PAID
Seattle, WA
Permit No. 248

ECRWSS
POSTAL CUSTOMER



The Shoreline - Lake Forest
Park Arts Council is bringing back
a beloved tradition with a series of
drive-in movies!

Enjoy safe social distancing this
summer with old classics and local
short film talent. All in the safety of
your car.

SATURDAY, JULY 25
Little Shop of Horrors (1960)

SATURDAY, AUGUST 8
Washington Short Film Festival

TICKETS AND INFO:
shorelinearts.net



HOW TO ACCESS CITY SERVICES

City Hall is currently closed to the public, but City services are still available! We are ready to help online, by phone, or by email.

BY PHONE OR EMAIL

City Council: (206) 801-2213, council@shorelinewa.gov

Clerk's Office: (206) 801-2230, clk@shorelinewa.gov

Code Enforcement & Customer Response Team:
(206) 801-2700, crteam@shorelinewa.gov

Permit Services: (206) 801-2500, pcd@shorelinewa.gov

Parks, Recreation, & Cultural Services:
(206) 801-2600, pks@shorelinewa.gov

Ronald Wastewater District:
Billing & service requests: (206) 546-2494, sfogarty@shorelinewa.gov
After-hours sewer emergencies: (206) 819-2785

ONLINE

Visit shorelinewa.gov/online for links to:

- Ronald Wastewater utility bill payment
- Pet license renewals and new applications
- Business licenses
- Permit Center Remote Services
- Public records requests
- Recreation program registration
- Service requests
- Summer camp registration
- E-notification sign up
- City staff directory



(206) 801-2700 Customer Response Team 24 hours/7 days a week

shorelinewa.gov