



# CURRENTS

News from the City of Shoreline Volume 22 No. 4

June 2020

## Summer events and recreation

We regret to announce that we are cancelling our annual array of citywide summer celebrations, neighborhood events, and recreation classes this year in response to the current COVID-19 pandemic. We also have had to redesign and limit participants to our summer day camps to meet health and safety guidelines established by the Washington State Department of Health and County Public Health officials. This required us to cancel previous camp registrations and open new registration for the new camp offerings.

This was not an easy decision for us to make. Residents throughout the community look forward to our summer events every year. And our summer camps are extremely popular. However, to help keep our community healthy, we simply cannot operate as we have in the past. During these unprecedented times, we have been taking and will continue to take the steps needed to ensure the health and safety of Shoreline residents, businesses, and employees. We have modified our operations to follow county, state, and federal disease-prevention guidelines.

### Summer Events

While we won't be able to gather for our annual celebrations and events, we are looking at ways to ensure we can still celebrate. After all, we are celebrating 25 years of being a City this year! We are working with our partner organizations and neighborhood associations to find ways to capture some of the community and creativity of summer events through other means. Now more than ever it is important for us to make those community connections, even if they are done from a distance.

Some of the events we will be holding this summer include:

- Micro-neighborhood concerts
- On-line video concerts
- Sidewalk/street chalk art
- Yard sign art creation to celebrate our community
- Can castle competition
- Book collection event
- Scavenger hunts-Bingo cards with the new themes throughout the summer

### MORE INFORMATION

[Shorelinewa.gov/summer2020](http://Shorelinewa.gov/summer2020)

Continued on page 5



Police Annual Report

Page 4



Healthy yards

Page 6



Shoreline Farmers Market

Page 7

## CONTACT YOUR Shoreline City Council



**MAYOR**  
**WILL HALL**  
(206) 373-1630  
whall@shorelinewa.gov



**DEPUTY MAYOR**  
**KEITH SCULLY**  
(206) 735-9030  
kscully@shorelinewa.gov



**SUSAN CHANG**  
(206) 373-1639  
schang@shorelinewa.gov



**DORIS FUJIOKA McCONNELL**  
(206) 731-9323  
dmconnell@shorelinewa.gov



**KEITH McGLASHAN**  
(206) 330-3948  
kmcglashan@shorelinewa.gov



**CHRIS ROBERTS**  
(206) 391-2733  
croberts@shorelinewa.gov



**BETSY ROBERTSON**  
(206) 396-5807  
brobertson@shorelinewa.gov

**CONTACT ALL COUNCILMEMBERS:**  
(206) 801-2213  
council@shorelinewa.gov

**CITY COUNCIL MEETINGS:**  
Mondays at 7:00 p.m.  
Shoreline City Hall, Council Chamber  
Agendas: [shorelinewa.gov/councilmeetings](http://shorelinewa.gov/councilmeetings)

## COVID-19 City Update

**THE PAST FEW MONTHS** have been challenging for all of us. And, unfortunately, we can expect challenging times to continue into the near future. We want to say how much we appreciate how the Shoreline community has stepped up to help take care of people in our community who are suffering. Whether by donating food or money, volunteering your time, or just checking on your neighbors, you have demonstrated how Shoreline is a caring community.

### City operations

While City Hall and City facilities are closed to the public, we are open for service. Our permit department is working to complete permits and are also taking new permits; we are conducting inspections; our street, parks, utility, and maintenance crews are out in the field; and many of our other staff are working from home. Our recreation staff have been supporting our community in a number of ways including helping with food assistance distribution. They are now focused on leading a modified summer day camp program to support families and children in the Shoreline community. Many of our recreation staff who would normally be running other programs such as aquatics and specialized recreation will be supporting the summer day camp program this year.

The City will be following guidance from the Governor's office and Public Health on when and how to reopen facilities safely. We will post information about the reopening of public facilities at [shorelinewa.gov/covid](http://shorelinewa.gov/covid).

### Business response

We are acutely aware of the impacts to local businesses and non-profits from COVID-19. We have established an internal COVID-19 business response team, and, in collaboration with partners around the region and at the federal level, we have been distributing information and exploring opportunities to support the Shoreline business community.

If you would like to receive the latest information on financial assistance and grant opportunities, visit [shorelinewa.gov/c19bizresponse](http://shorelinewa.gov/c19bizresponse) and sign-up for our business response eNotifications at [shorelinewa.gov/alert](http://shorelinewa.gov/alert).

And remember, if you want your favorite restaurants and shops to be here in the future, you need to support them now. Visit [shorelinewa.gov/covid](http://shorelinewa.gov/covid) to find an interactive map that shows what restaurants are open for pick-up and/or delivery.

### Shoreline Emergency Community Response Fund

On March 31, the Shoreline City Council established an Emergency Community Response Fund to provide rapid and flexible access to resources for eligible organizations providing emergency services to Shoreline residents. Local non-profits and faith-based organizations requested funds from the City to support new or additional direct emergency assistance to Shoreline residents during the Coronavirus crisis. The fund provided \$150,000 in emergency relief to organizations directly helping Shoreline residents. Funds went to:

- \$50,000 to Sound Generations to support the Shoreline Lake-Forest Park Senior Center's lunch and food distribution program
- \$20,000 to Center for Human Services
- \$20,000 to Shoreline PTA for food assistance
- \$15,000 to Lake City Partners for hotel vouchers for at-risk individuals
- \$15,000 to YMCA for childcare for first responders and food assistance
- 9 Grants (\$43,500) of \$5,000 or less to various organizations

### How to get help

There are a number of resources available to individuals and families impacted by COVID-19, including rental, utility, and other financial assistance; food assistance; and unemployment benefits and paid leave. To find the latest information, visit [shorelinewa.gov/covid](http://shorelinewa.gov/covid).

**Remember to wear a face covering, wash your hands, don't touch your face, and keep six feet apart!**

# Ground Floor Commercial Development Code Amendments

**CITY COUNCIL HAS HEARD** from many residents that they would like new apartment buildings to also include spaces for businesses or offices. Planning staff is developing regulations that would either require or incentivize these types of commercial spaces, starting in the North City and Ridgecrest neighborhoods. This first set of code amendments will be considered by the Planning Commission this summer. The City Council will consider the Planning Commission's recommendations in the fall.

After seeing how the first amendments work, Council may broaden the code changes to include other commercial and mixed-use zones in Town Center, Shoreline Place, and the 145th and 185th Light Rail Station Subareas in future years.

Earlier this spring, we conducted an online survey gathering resident and developer feedback on this topic. The results of that survey will be shared at a forthcoming Planning Commission meeting and will also be posted on the project webpage, [shorelinewa.gov/groundfloor](http://shorelinewa.gov/groundfloor). To sign-up for email alerts, such as when public meetings will be held on this topic, please visit the project webpage and enter your email address where it says "Sign Up Below for Updates."

We would love to hear your thoughts on this important topic.

## MORE INFORMATION

Senior Planner Steve Szafran

[sszafran@shorelinewa.gov](mailto:sszafran@shorelinewa.gov), 206-801-2512

[shorelinewa.gov/groundfloor](http://shorelinewa.gov/groundfloor)



## SIGN UP FOR ENOTIFICATIONS

Receive City news, project updates and event notifications by email! You can choose which topics you'd like to subscribe to and update your preferences at any time.

Learn more and sign up:  
[shorelinewa.gov/alert](http://shorelinewa.gov/alert)

## SOCIAL MEDIA

Follow us on Facebook or Twitter for up-to-date news and updates:

[facebook.com/ShorelineWA](https://facebook.com/ShorelineWA)  
[twitter.com/shorelinewagov](https://twitter.com/shorelinewagov)

# 175<sup>th</sup> Street Corridor Improvements New online opportunities to provide your input!

## Online Engagement and Survey Site

Monday, July 6 – Sunday, Aug. 9

Info: [shorelinewa.gov/175corridor](http://shorelinewa.gov/175corridor)

## Webinar: Presentation and Q&A

Wednesday, July 29, 6:00 to 7:00 p.m.

RSVP at [shorelinewa.gov/175corridor](http://shorelinewa.gov/175corridor)

**WE ARE COMMITTED** to meaningful and collaborative public participation throughout the design process for the 175th Street Corridor Improvements Project. We want to receive your feedback on design concepts now, as this is the most critical stage of the design process. We will be engaging with you online during this design phase due to COVID-19.

Please join us on July 29 at 6:00 p.m. for a webinar. We will present two design concepts for the corridor based on the feedback we received in spring 2019 from residents who live along the 175th Street corridor, local businesses, community organizations, and people who travel on N 175th Street. We will also present intersection design concepts for an improved signalized intersection or a roundabout at the intersection of NE 175th Street and Meridian Ave N. You'll have the opportunity to ask questions and get them answered by our project team.

Visit [shorelinewa.gov/175corridor](http://shorelinewa.gov/175corridor) for details on the webinar, information on the project, and opportunities to view the design concepts. Please provide feedback by visiting our online engagement and survey site between July 6 and August 9. We want to know what you think we are missing as we work on refining the design and moving toward a final concept.

## MORE INFORMATION:

Project Manager Leif Johansen

[ljohansen@shorelinewa.gov](mailto:ljohansen@shorelinewa.gov); 206-801-2489

[shorelinewa.gov/175corridor](http://shorelinewa.gov/175corridor)

# SHORELINE POLICE UPDATE



## Annual Police Service Report

EVERY YEAR, Shoreline Police provide the community with an Annual Police Service Report. The report tracks crime data; service efforts and accomplishments; crime trends; and budget information. The good news is Shoreline continues to be a safe community.

In 2019, Shoreline Police responded to 15,973 Dispatched Calls for Service (911 calls) and initiated 9,953 contacts, for a total of 25,610 police related contacts. While there had been a steady increase in calls for service since 2010, last year was the first year that calls decreased. Calls for services in 2019 were down 5% from 2018. Shoreline Police made over 1,150 arrests in 2019.

The 2019 Police Service Report (PSR) has fewer graphs showing comparable data over time than in prior years. This is due to 2019 being the first full year Shoreline Police have used the National Incident Based Reporting System (NIBRS). The FBI transitioned from the Uniform Crime Reporting (UCR) system to NIBRS and will require all police agencies across the country to use NIBRS for crime reporting by 2021.

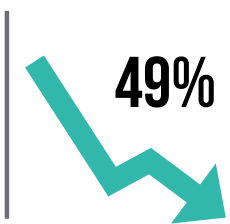
NIBRS is a more comprehensive reporting system that captures all the crimes associated with an incident. The UCR system used the most serious crime and the incident was closed with the most serious crime as the classification. Thus, the 2019 PSR is not able to use previous data to compare crime trends. One police incident may now have five crimes associated with it. This does not mean that crime is going up, but, rather, the reporting is more comprehensive. Comparing 2019 NIBRS data to prior year's UCR data could give the impression there's been an increase in crime, when that may not be the case. Given this, the 2019 PSR only provides data for 2019.

However, even though the overall numbers aren't comparable, we were able to look at trends for specific crimes and provide some comparisons. Burglaries remained almost the same from 2018 with 232 reported burglaries. This was below the five-year average. There has been a 49% decrease in burglaries over the past five years. There may be several factors that contribute to the reduction in property crimes. One is neighbors looking out for each other and calling 911 immediately when they see suspicious activity. The police depend on the community to be additional eyes and ears; this resulting partnership has led to multiple arrests and a reduction in property crimes.

Vehicle thefts were down 9% from 2018 with 145, which is also below the five-year average. Larcenies saw a 15% increase from 2018, but it was still below the five-year average. An area of concern is the increase in aggravated assaults. While aggravated assaults did not increase significantly from 2018, there has been an upward trend for the five-year average.

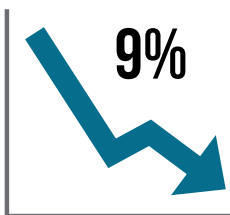
Finally, the Shoreline Police Department has partnered with the police departments of Bothell, Kirkland, Lake Forest Park, and Kenmore to improve police interaction with those suffering from mental illness and addiction. Shoreline started the RADAR program (Response Awareness Deescalation and Referral), which provides critical information to officers up front to help de-escalate an individual in crisis. This allows officers to develop a response plan that can help reduce the need for the use of force. The program provides officers direct access to mental health professionals (navigators) to work together to connect those in need to available services.

### BURGLARY (BREAKING OR ENTERING)



Incidences of burglary have decreased 49% in the past 5 years. Burglary is the unlawful entry of a structure with the intent to commit a crime.

### VEHICLE THEFT



Incidences of vehicle theft are 9% lower than in 2018. This category includes the theft or attempted theft of a motor vehicle.

### MORE INFORMATION

Full PSR Report: [shorelinewa.gov/police](http://shorelinewa.gov/police)

RADAR information: [shorelinewa.gov/RADAR](http://shorelinewa.gov/RADAR)



## Shoreline Police will patrol BNSF railroad tracks

With the advent of sunny weather, people often look for ways to access the Puget Sound waterfront. In Shoreline this has resulted in individuals crossing the BNSF railroad tracks. Crossing the tracks where it's not allowed is a misdemeanor, Criminal Trespass in the Second Degree (RCW 9A.52.080). This summer Shoreline and Burlington Northern Police will be helping to keep people safe by enforcing this criminal trespass law.

The tracks are clearly posted with "No Trespassing" signs. They are extremely dangerous with Amtrak and other trains using them throughout the day.

We are asking Shoreline residents to honor the "No Trespassing" signs in place along the tracks and to cooperate by only using allowed crossings.

## Sound Transit Construction Updates

Sound Transit has begun work to construct the elevated guideway that will support the light rail tracks. Guideway construction includes drilling shafts for column foundations, installing columns, and eventually building the guideway and bridge spans. Crews will construct 37 columns. Each column is built in seven phases.

### NE 185<sup>th</sup> Avenue and 5<sup>th</sup> Avenue NE Traffic Impacts

Sound Transit is continuing work at NE 185<sup>th</sup> Street and 5<sup>th</sup> Avenue NE near Shoreline Stadium. You may notice a new traffic round-a-bout was recently constructed at the intersection of NE 185<sup>th</sup> Street and 10<sup>th</sup> Avenue NE. Sound Transit installed the round-a-bout to reduce traffic congestion while they work to re-align 5<sup>th</sup> Avenue NE. Drivers should expect delays as NE 185<sup>th</sup> Street will be reduced to one lane at 5<sup>th</sup> Avenue NE during construction. We suggest using signed detour routes to avoid heavy traffic. For more details visit [soundtransit.org/185thchanges](https://soundtransit.org/185thchanges).

### Stay Connected With Sound Transit

Sound Transit is among the agencies across the region and state mobilizing to control the spread of COVID-19. In keeping with social distancing measures encouraged by health authorities to reduce virus transmission risks, Sound Transit will issue construction alerts electronically and limit face-to-face interactions when possible. Please reach out by phone or email with questions or concerns.

### MORE INFORMATION

Subscribe to updates: [soundtransit.org/subscribe](https://soundtransit.org/subscribe)

Report Issues: 24-hour construction hotline - 1-888-298-2395

Sound Transit Community Outreach:

206-398-5300, [lynnwoodlink@soundtransit.org](mailto:lynnwoodlink@soundtransit.org)

## Summer Events and Recreation

continued from page 1

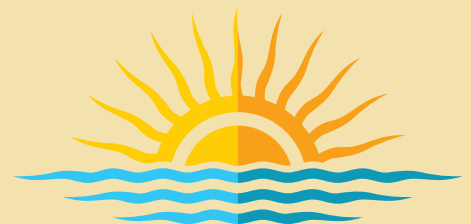
### Summer Camps

As a result of having to redesign our summer camps, there are fewer camp spaces available. Camps will run from June 22 through August 21. Some of the changes that we are making include:

- Groups of eight campers with two staff;
- Each camp group assigned the same space each day;
- Each group is assigned a restroom;
- Group activities are only allowed when social distancing can be maintained;
- Camp check-in/out will be managed to minimize the number of people in the parking area at one time;
- No field trips;
- No swimming;
- Wearing of personal protective equipment (PPE), such as face coverings;
- Parents/guardians will be required to do daily health checks for their campers;
- Increased level and frequency of custodial services; and
- There will be no shared camp equipment except for some sports equipment, which will be disinfected on a regular basis.

### MORE INFORMATION

[Shorelinewa.gov/camps](https://shorelinewa.gov/camps)





## PREVENT BLUE BIN BLUNDERS

### What to do with lids?

We've all been there; you have an empty bottle and aren't sure if you should keep the lid on the bottle or take it off before placing in the recycling bin. Here's a good rule of thumb to follow:

If the container and lid are made of the same material (e.g., plastic water bottle with plastic lid), screw the lid tightly back on the clean, empty bottle and place in recycling.

If the container and lid are made of different materials (e.g., glass jar with a metal lid), remove the lid and place the empty, clean, and dry glass bottle or jar in the recycling. If the lid is three inches or wider-about the size of a sticky note-it can be cleaned and recycled. If smaller, throw the lid in the garbage.

### MORE INFORMATION

Recology King County  
206-763-4444  
[shorelinewa.gov/recycling](http://shorelinewa.gov/recycling)  
[recology.com/shoreline](http://recology.com/shoreline)

## CENSUS 2020

Thank you to all of the Shoreline residents who have already responded to the Census! As of May 26, over 75% of Shoreline households had responded.

It's not too late to participate! The Census Bureau began mailing paper versions in April. You can also still choose to complete it online at [my2020census.gov](http://my2020census.gov) or by phone at 844-330-2020.

**MORE INFORMATION:**  
[shorelinewa.gov/census2020](http://shorelinewa.gov/census2020)



## Healthy yards, healthy families, healthy Puget Sound

**AS SPRING ROLLS INTO SUMMER**, many of us have been spending our extra time at home in our yards, recreating, gardening, and relaxing. When properly cared for, these spaces feel like an extension of our home inside – kids and pets run and tumble on the lawn, we relax and read in the shade of trees, and enjoy family dinners in our backyard.

To keep our slice of nature healthy and our families safe, it's important to be particular about the type of products used in the yard. Whenever possible, use natural yard care practices, which support healthy, vibrant lawns and gardens while minimizing synthetic chemical products. Excess chemicals are often tracked inside the home and, when it rains, flow from yards into storm drains and, ultimately, Puget Sound.

### A few natural yard care practices to get you started:

- **Build healthy soil** – if your soil looks pale, sandy, or clay like, mix in compost to bring it back to life.
- **Mulch annually around plantings to suppress weeds**; mulch also acts as a compost as it breaks down over time. You can get free wood chips from [getchippedrop.com](http://getchippedrop.com).
- **If a fertilizer is needed, go organic!** Look for the OMRI label to find certified organic products.
- **Go Native!** Native plants tend to be more resilient and also support beneficial insects (including pollinators!).
- **Water deeply, but infrequently** to save water and encourage deep root growth in plants.
- **If a pest problem develops, first identify the pest.** Research it and use the least toxic solution. If you must spray, always follow label directions and where protective materials. Keep animals and children away.

### MORE INFORMATION

Garden Hotline  
206-633-0224  
[gardenhotline.org](http://gardenhotline.org)  
[naturalyardcare.org](http://naturalyardcare.org)



# Curious how climate change could impact Shoreline?

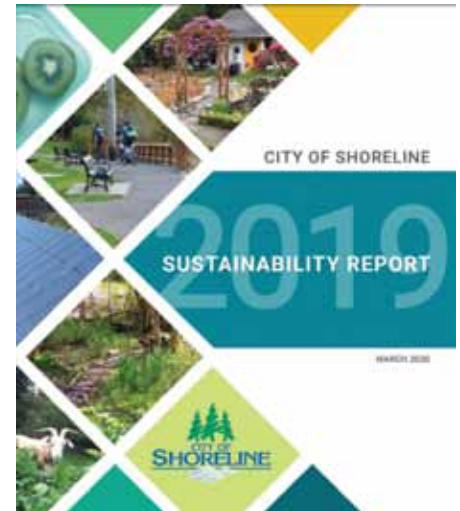
Check out the new **Climate Impacts & Resiliency Study!**

**THE CITY** recently completed a study to identify climate change impacts and areas of vulnerability for the Shoreline community. While we must continue to reduce the greenhouse gas emissions that drive climate change, we must also prepare our community for climate change impacts that are here now and anticipated in the future. The study evaluated how climate change could impact:

- the stormwater system;
- buildings, development, and transportation systems;
- natural systems (such as ecosystems, parks, open spaces, and natural areas); and
- public health, safety, and emergency services in Shoreline.

Key areas of vulnerability are related to increased rainfall, more intense rainstorms and flooding, higher temperatures, and more extreme heat events associated with climate change. A new mapping tool was developed to help City staff identify areas of vulnerability for consideration when designing new capital projects. A list of recommended actions was also developed to help build resiliency into the City's infrastructure and stormwater system, and the overall community.

Visit our website for an interactive story map to learn more about how climate change will impact our community and what we can do to be more resilient. For more information and resources, visit [shorelinewa.gov/sustainability](http://shorelinewa.gov/sustainability). Click on the Climate, Water & Energy tab, followed by Adaptation & Resilience.



## MORE INFORMATION

**Autumn Salamack**  
*Environmental Services Coordinator*  
[asalamack@shorelinewa.gov](mailto:asalamack@shorelinewa.gov)  
206-801-2452

# Farmers Market open for Season 9 at new location

**ON SATURDAY JUNE 6**, the Shoreline Farmers Market opened for its 9th season. While this is an exciting time of the year for the Market, it faces new challenges. The Market has a new location. It moved from the former Sears parking lot to the former US Bank parking lot, right at the entrance of Shoreline Place. You won't be able to miss it as you're driving in from 155th.

The Market has worked closely with Public Health on plans to keep everyone safe. They are working to bring you a safe, sanitary, and healthy outdoor shopping experience. This will be a new farmers market experience for all of us and we ask that you are kind and patient while the Market works to serve our community. Similar to grocery stores, the Market asks that you come prepared and understand the market rules.

- Stay home if you are (or think you are) sick. Stay home if you have (or think you have) been in contact with someone who is sick
- No pets. Service animals allowed
- Designate one shopper per household to go to market
- Make a shopping list (check our website for updated vendor schedules and products)
- Bring reusable bags – these are permitted
- Maintain 6 feet of space around you at all times
- You are encouraged to wear a face covering

Market activities including chef demonstrations, sponsor booths, non-profit tabling, market music, and kids programming are postponed until further notice

The Market WILL continue to offer food access programs including WIC, FMNP, and SNAP/EBT. All SNAP transactions will be **DOUBLED** through the new statewide SNAP Market Match program.

Market staff and volunteers will be regularly sanitizing high-contact areas and the market will provide sanitizing stations for your safety. While shopping at the Shoreline Farmers Market you can rest assured that your safety is the Market's top priority.

Thank you to everyone in our community that has been a Market supporter over the years. We hope that you come out to support Washington farmers, local businesses, and join us in lifting up our community. Please stay connected through the Shoreline Farmers Market's Facebook page and visit their website to learn more about the modified farmers market.

## MORE INFORMATION

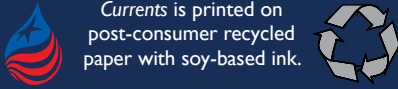
[ShorelineFarmersMarket.org](http://ShorelineFarmersMarket.org)  
[facebook.com/shorelinefarmersmarket](https://facebook.com/shorelinefarmersmarket)  
[info@shorelinefarmersmarket.org](mailto:info@shorelinefarmersmarket.org)



June 2020 Vol. 22 No. 4  
**CITY OF SHORELINE**  
**CURRENTS**

Currents is produced by the  
 Shoreline City Manager's Office  
 Contact the City:  
 (206) 801-2700

**Alternate formats  
 available upon request**



Currents is printed on  
 post-consumer recycled  
 paper with soy-based ink.

Web: [shorelinewa.gov](http://shorelinewa.gov)

[facebook.com/shorelinewa](https://facebook.com/shorelinewa)

[twitter.com/shorelinewagov](https://twitter.com/shorelinewagov)

[youtube.com/cityofshoreline](https://youtube.com/cityofshoreline)



17500 Midvale Avenue N  
 Shoreline, WA 98133-4905

PRSR STD  
 US Postage  
 PAID  
 Seattle, WA  
 Permit No. 248

ECRWSS  
 POSTAL CUSTOMER

# SHORELINE SUMMER FUN!

Join us for a game of bingo every  
 week this summer!

See if you can find all the items in a  
 row, column, or corner to corner.

Shoreline wildlife can be found in  
 your yard, your neighborhood, and  
 our parks!

Remember to be safe when you're  
 out and about: Stay six feet apart  
 from others, wash your hands  
 frequently, and don't touch your  
 face. And remember, wildlife needs  
 to feel safe, too. Be sure to give  
 animals plenty of space and look  
 from a distance.

New bingo cards will be available  
 every Friday at:  
[shorelinewa.gov/summer2020](http://shorelinewa.gov/summer2020).

### IMAGE CREDITS

Robin: By Dakota Lynch - Own work, CC BY-SA 3.0  
 Raccoon: By Darkone - Own work, CC BY-SA 2.5  
 Bumblebee: By Alvesgaspar - Own work, CC BY-SA 3.0  
 Swallowtail: By Nandaro - Own work, CC BY-SA 3.0  
 Crow: By BKleinWiki - Own work, CC BY-SA 4.0  
 Rabbit: By BirdValiant - Own work, CC BY-SA 3.0  
 Squirrel: By BirdPhotos.com, CC BY 3.0  
 Ant: By Dawidi, Johannesburg, South Africa - CC BY 2.5  
 Hummingbird: Author unknown, CC BY-SA 3.0

# SHORELINE WILD BINGO



**ROBIN**



**RACCOON**



**BUMBLEBEE**



**BUTTERFLY**



**CROW**



**RABBIT**



**SQUIRREL**



**ANT**



**HUMMINGBIRD**