



King County

Department of
Natural Resources and Parks
Solid Waste Division

Waste
Prevention

Resource
Recovery

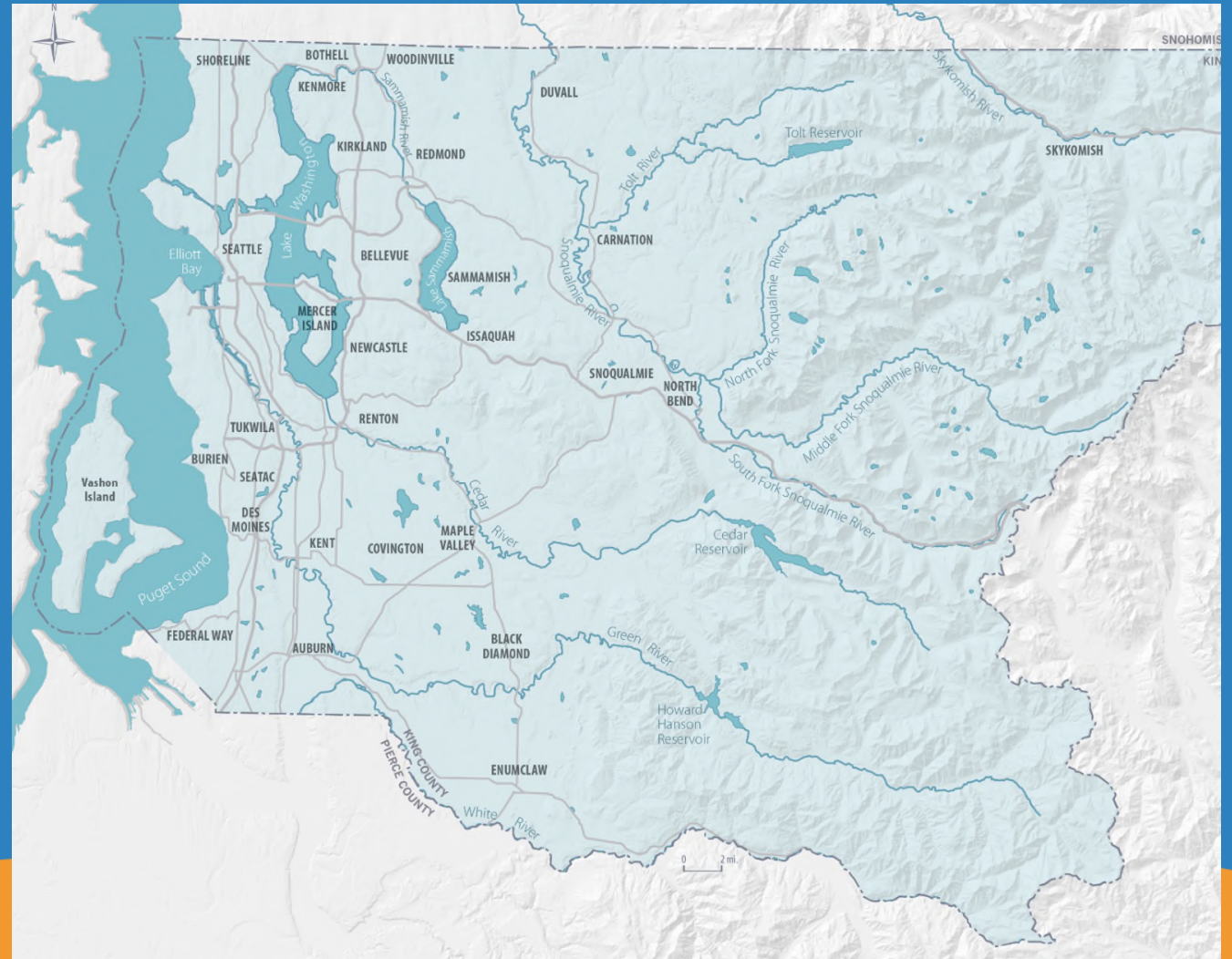
Waste
Disposal

2019 Comprehensive Solid Waste Management Plan

A Plan for King County's Regional System

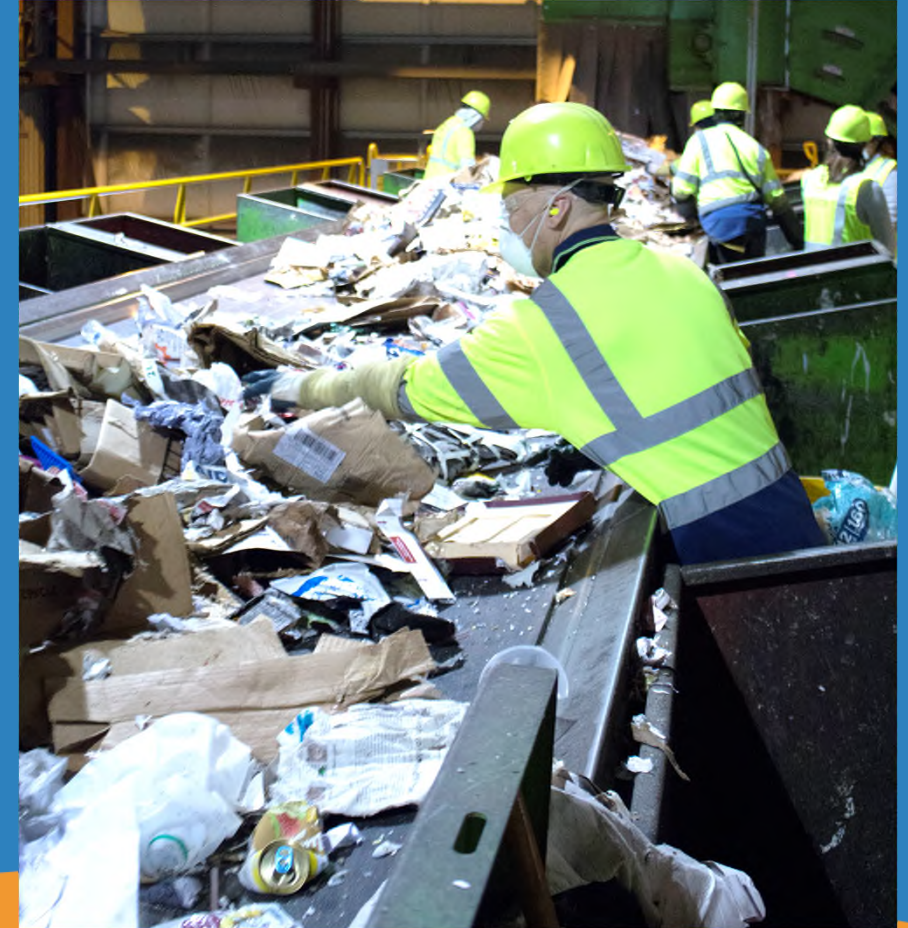
- 2,132 square miles
- King County and 37 cities
- 1.5 million residents*
- 931,000 tons of garbage*

*2017



Public/Private Partnership

- **King County**
 - Transfer stations
 - Landfill
- **Cities**
 - Provide/contract for curbside collection
- **Private Companies**
 - Curbside collection
 - Materials recovery facilities (MRFs)
- **County/Cities/Private**
 - Promote recycling and sustainability



Key Policy Recommendations



Disposal

Transfer
Services

Recycling

Recycling: Menu of Actions to Reach 70%

- Aspirational goal of moving recycling from 54% to 70%
- Menu of actions lets cities tailor approaches to their needs while working toward more unified regional approaches



Transfer: Continue Modernizing Facilities

- Finish station modernization including a new NE facility
- Benefits
 - Improved customer convenience
 - Faster unloading
 - Expanded recycling services
 - Garbage compaction
 - Sustainable building design and operation
 - Equitable service levels



Disposal: Further Develop Cedar Hills Landfill

- Maximize capacity within existing landfill footprint
- Benefits
 - Lowest cost per ton
 - Lowest greenhouse gases
 - Manages waste locally
 - Provides time to plan for next disposal option after Cedar Hills is full
- Work must begin this year to have new capacity ready in time



Next Plan Update Will Identify Post-Cedar Hills Disposal Method

- Start discussion well before the 5-year update cycle
- Options
 - Waste-to-Energy (mass burn)
 - Waste Export by Rail
 - Other emerging technologies

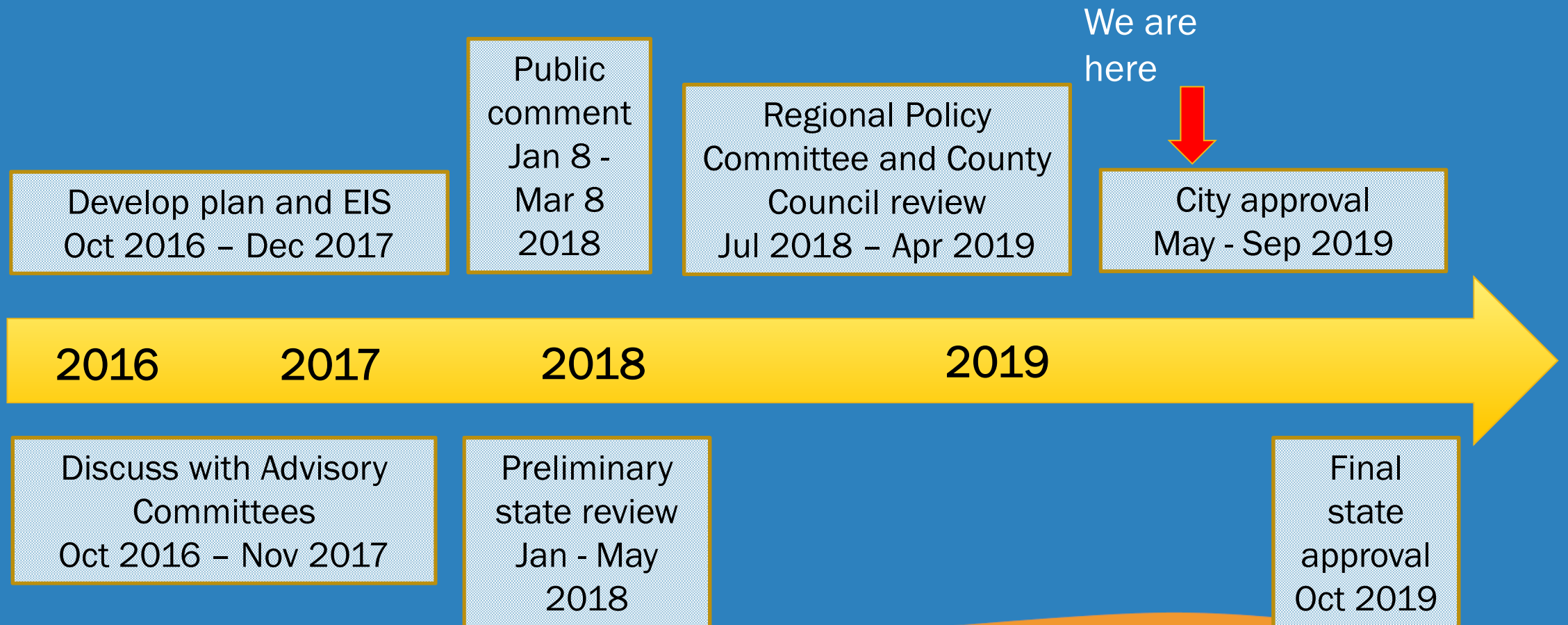


RPC & County Council Amendments Strengthen The Plan

- Use of the buffer
- Bird management
- Top lift best practices
- Height of Areas 5, 6, and 7
- Work plan for post-Cedar Hills disposal
- Explore county road mitigation
- Send annual landfill report to county council



Steps in Plan Approval



City Approval of the Plan

- Governed by interlocal agreements
- City legislation in a 120 day period
- Plan is approved if approved by cities representing $\geq 75\%$ of the population of cities that act within 120 days
- After city approval, Department of Ecology gives final approval within 45 days





King County

Department of
Natural Resources and Parks
Solid Waste Division

Waste
Prevention

Resource
Recovery

Waste
Disposal

King Street Center
201 South Jackson Street, Suite 701
Seattle, WA 98104-3855
206-477-4466
711 TTY Relay
your.kingcounty.gov/solidwaste



King County

Department of
Natural Resources and Parks
Solid Waste Division