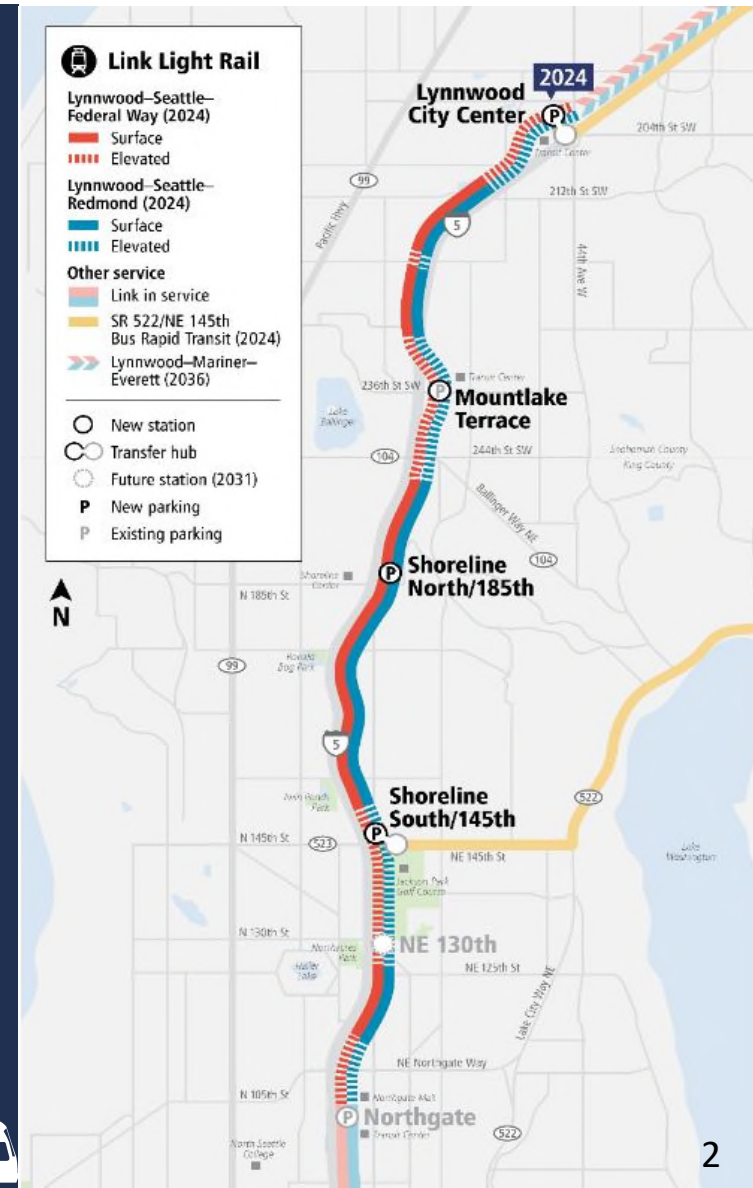


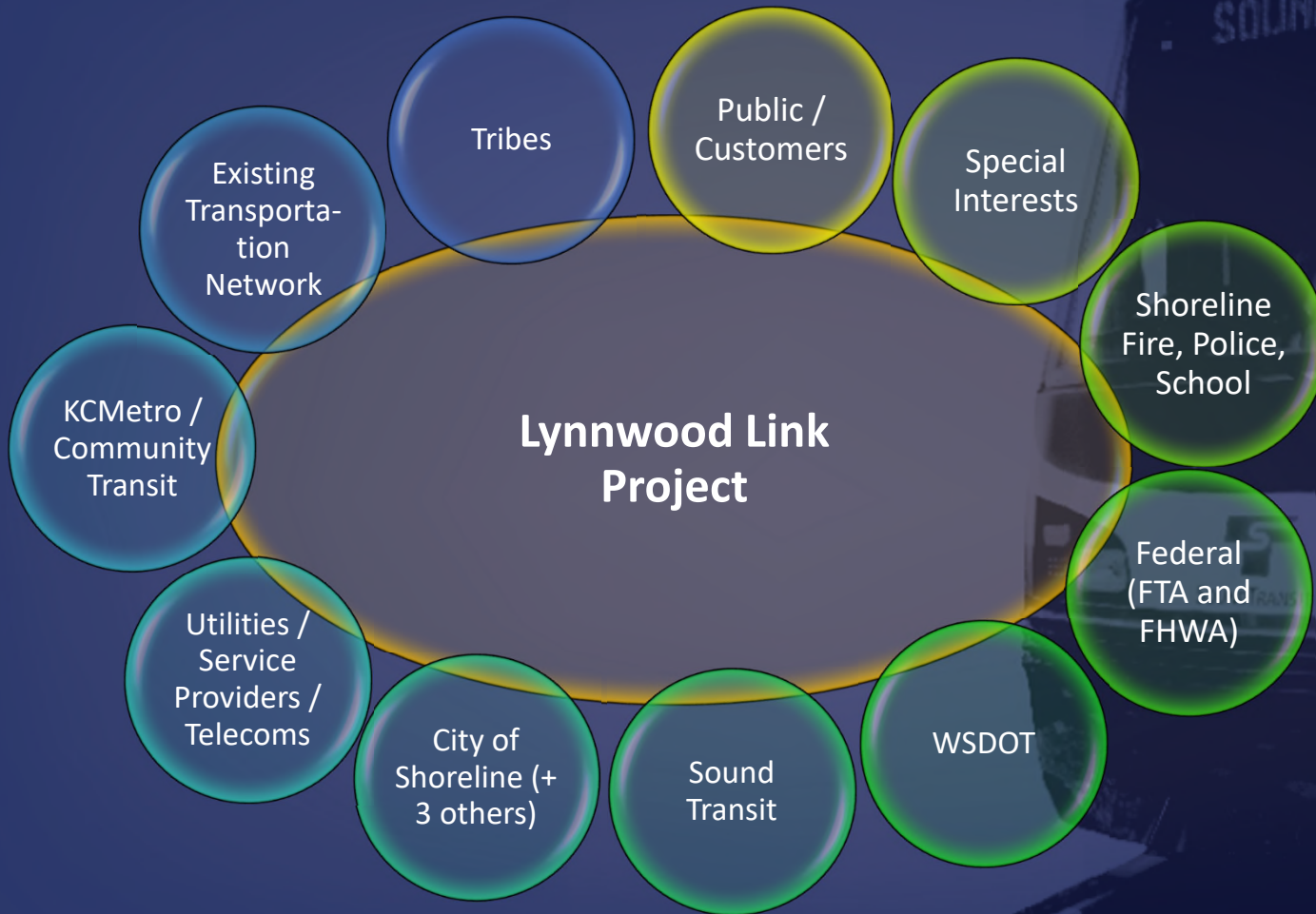
*City of Shoreline Special Use Permit: SPL 18-0140
Lynnwood Link Extension
Public Hearing-April 24, 2019*

Lynnwood Link Extension

- Extends light rail 8.5 miles north from Northgate to Lynnwood
 - 3.2 miles within Shoreline
- Transit guideway, 2 stations with garages
- Peak service every 4 minutes
- 19-22 minute ride from Shoreline to Westlake
- Construction begins in Spring of 2019
- Start of service: 2024
- [Video of Lynnwood Link Alignment](#)



Stakeholders and Regulations

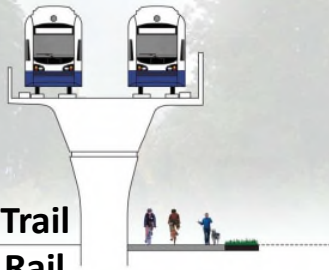


Body of Regulations

- Shoreline Municipal Code
- ST Design Criteria Manual
- King County
- WSDOT
- RCW
- FHWA
- FTA
- Utilities
- Shoreline Fire Dept.
- IBC
- NFPA
- Department of Ecology
- USACE
- WDFW
- USFWS

Collaboration

TRAIL UNDER RAIL



Shoreline Trail
Along the Rail



Decorative Garage Screening



145th Bus Transit Center

Landscape Buffers KCD
Partnership



Artistic Noise Wall



185th Bus Transit Center



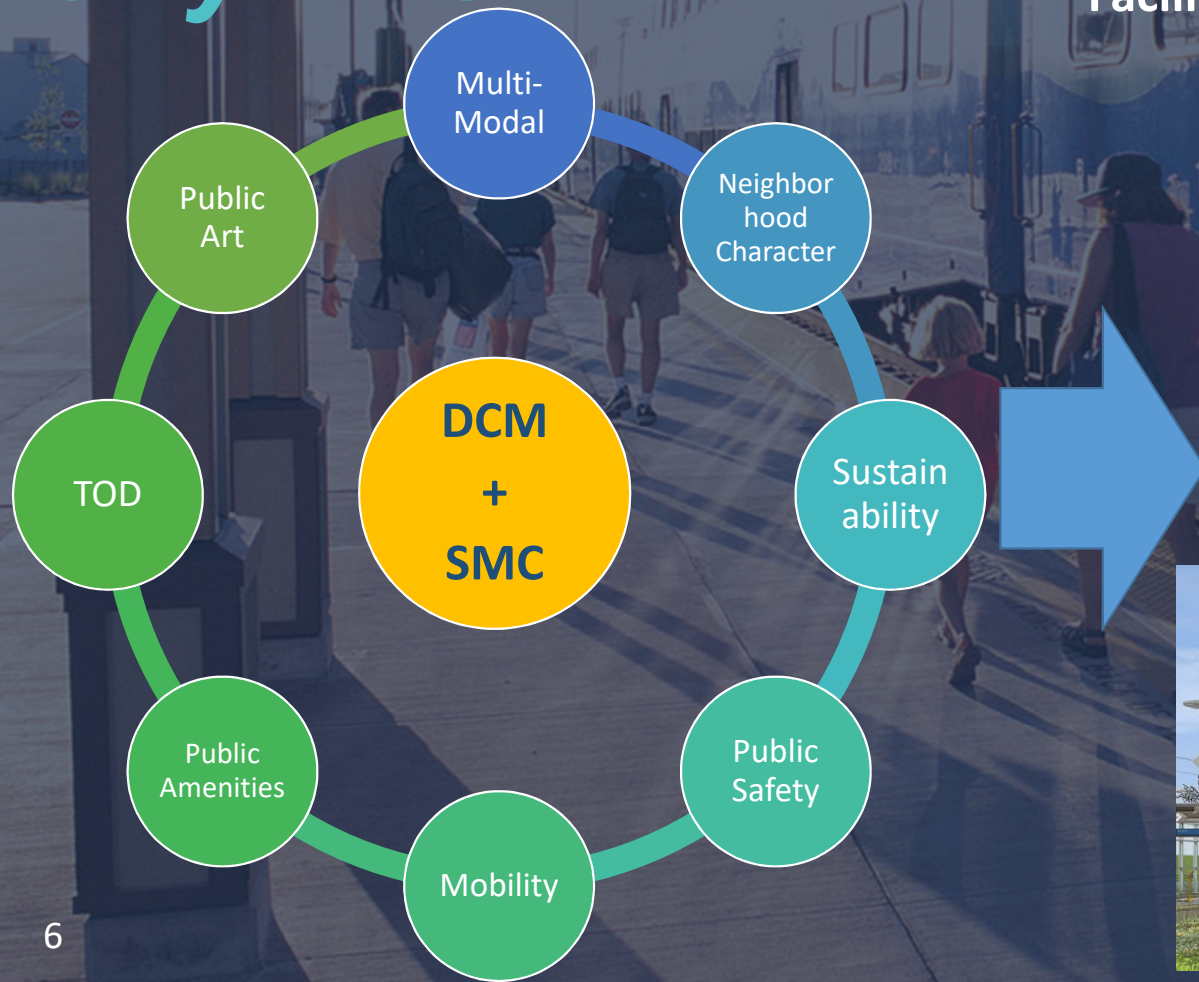
Approval Criteria

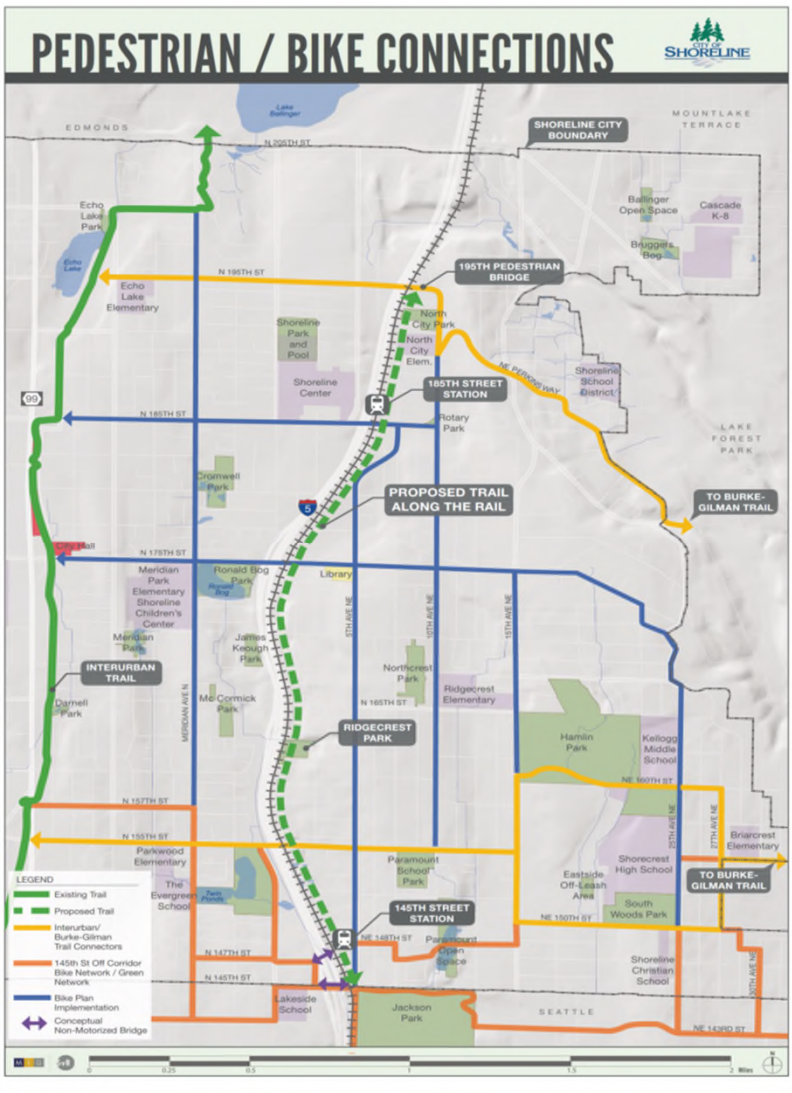
- **General SUP Decision Criteria (Applies to All Special Uses)**
SMC 20.30.330.B
- **Light Rail-Specific Decision Criteria (Light Rail Transit Facility/System Only)**
SMC 20.30.330.C.1 and C.2
- **Guiding Principles for Light Rail Facility Design**
Incorporated by reference in *SMC 20.30.330.C.3*



City of Shoreline

Guiding Principles for Light Rail Facility Design





Modifications and Waivers

Modifications and Waivers to Development Standards Permitted:

1. If the standard “would make siting, development or operation of the facilities impossible or impracticable [under the GMA standard]”;
2. “would result in reduced public benefits”; or if
3. “alternative actions could meet or exceed the intended goals of [the standards].”

SMC 20.40.438.D.



Design Departures

Permitted where “consistent with the purposes or intent” of the commercial design standard at issue.

SMC 20.30.297.A.1.

Engineering Deviations

Permitted based on technical standards set forth in SMC 20.30.290.B.



Conditions of Approval

- The City Staff Report proposed 92 conditions of approval.
- Sound Transit's Staff Report proposed changes to 12 of these conditions:
 - Corrections to Typos
 - Clarifications
 - Text Revisions
- The City and Sound Transit have reached agreement on the specific language of the majority of these conditions.



Conclusion

Sound Transit requests approval of the Special Use Permit subject to . . .

- *The Modifications, Deviations, and Departures described in the City Staff Report*
- *The Conditions of Approval stated in the City's Staff Report, subject to the corrections set forth in Sound Transit's separate Staff Report*

