



July 30, 2018

Mr. Todd Malo, Fire Marshal
Shoreline Fire Marshal's Office
17525 Aurora Avenue North
Shoreline, Washington 98133

Lynnwood Link Extension: Letter of Concurrence

AE 0010-15: LOC #14SL Approval of Guideway Emergency Access Locations

Dear Fire Marshal Malo:

Sound Transit requests concurrence for the following locations dedicated to emergency responder access onto the Link Light Rail trainway. Such access meets or exceeds the requirements of the 2014 Edition of NFPA 130 Standard for Fixed Guideway Transit and Passenger Rail Systems as adopted by the City of Shoreline.

Code Requirement – NFPA 130

Section 6.4.1.6: Access to the elevated trainway shall be from stations or by mobile ladder equipment from roadways adjacent to the trackway.

Section 6.4.1.7: If no adjacent or crossing roadways exist for the elevated trainway, access roads at a maximum of 2,500-foot intervals shall be required.

Section 6.4.1.8: Where the configuration of an open-cut trainway prevents or impedes access for firefighting, provisions shall be made to permit fire fighter access to that section of trainway at intervals not exceeding 2,500 feet.

Proposal

Sound Transit proposes two classes of emergency responder access points shown on the attached tables and schematic drawings. Primary emergency access point onto the guideway will include removable guardrail chains, operable gates or sliding acoustic panels, an Emergency Telephone (ETEL), warning signage and standardized "FD ACCESS" signage. Secondary access points are identified to assist emergency responders with additional access points that may require groundset ladders, aerial ladders or cutting through security fencing for trainway access. NFPA 130 access requirements are satisfied with the location and spacing Primary access points.

CHAIR

Dave Somers
Snohomish County Executive

VICE CHAIRS

Ron Lucas
Steilacoom Mayor

John Marchione
Redmond Mayor

BOARD MEMBERS

Nancy Backus
Auburn Mayor

David Baker
Kenmore Mayor

Claudia Balducci
King County Councilmember

Dow Constantine
King County Executive

Bruce Dammeler
Pierce County Executive

Jenny Durkan
Seattle Mayor

Dave Earling
Edmonds Mayor

Rob Johnson
Seattle Councilmember

Kent Keel
University Place Mayor

Joe McDermott
King County Council Chair

Roger Millar
Washington State Secretary of Transportation

Paul Roberts
Everett Council President/ Mayor Pro Tem

Dave Upthegrove
King County Councilmember

Peter von Reichbauer
King County Councilmember

Victoria Woodards
Tacoma Mayor

CHIEF EXECUTIVE OFFICER

Peter M. Rogoff

The attached Emergency Access drawings also indicates the extent of fire protection standpipes, locations of fire department connections and new or existing hydrants along the alignment through the Shoreline Fire Department jurisdiction.

Thank you for your consideration and please contact me at 206-398-5481 with any questions or concerns. at 206-398-5481.

Sincerely,



Fouad Chihab
Lynnwood Link Corridor Design Manager
Sound Transit Design, Engineering & Construction Management

Cc: Rod Kempkes, ST John Evans, ST Jon Jordan, ST Jimmy Lassiter, ST
Kevin Collins, HJ Jim Schettler, HJ Jeff Schutt, HJ Andy Moniz, HJ DCC

Attachments: FD Access Signage
Shoreline Primary and Secondary Access Tables
Emergency Access schematic drawings, sheets 4 through 11

Concurrence:



Todd Malo, Fire Marshal

10/9/18

Date



Reflective RED with
Reflective WHITE copy and border
On aluminum sheet, 0.080" minimum thickness
Per WSDOT Standard Specifications 9-28

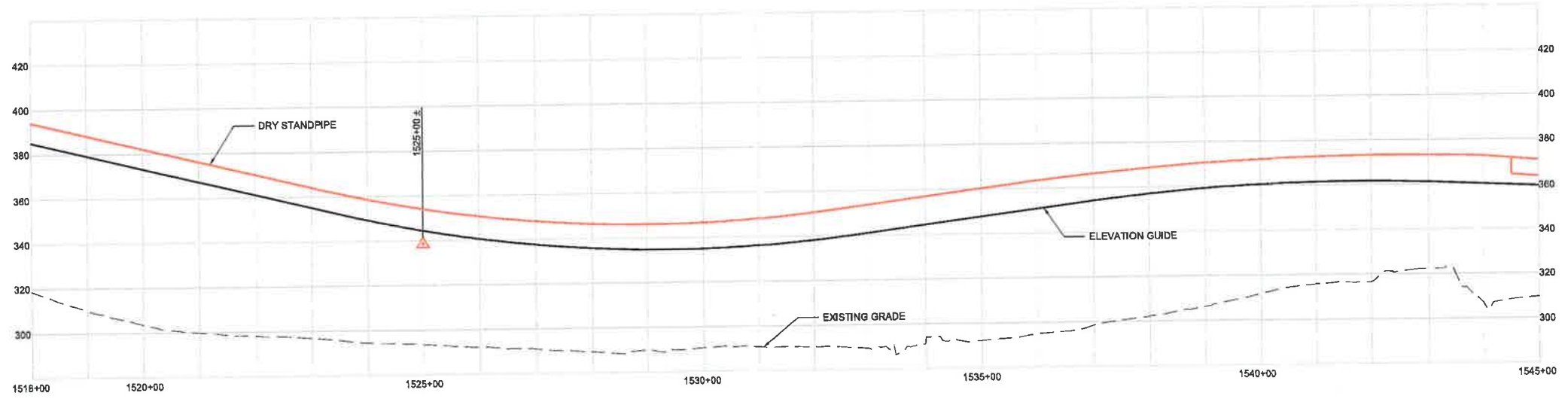
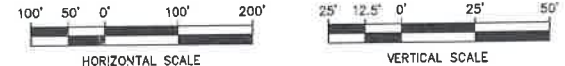
| L200 / 300 Primary Emergency Access Locations and Intervals | | | | | | | | | | |
|---|----------|-------------------|---------|------|-----|----|---------|--------------------------|-------------|---------------------------------------|
| STATIONING | INTERVAL | CITY | FD SIGN | ETEL | FDC | ID | KNOXBOX | APPX LOCATION | APPX HEIGHT | ACCESS |
| 1508 + 20 | 1506/20 | Seattle | X | X | X | | | 5TH AVE NE | +40 | SLIDING ACOUSTIC PANEL |
| 1525 + 00 | 1523/00 | Seattle | X | X | X | | | 5TH AVE NE | +48 | CHAINS IN CABLE RAIL |
| 1549 + 00 | 1547/00 | Shoreline | X | X | X | X | | SOUTH 145TH STATION | 0 / +35 | SOUTH EGRESS STAIR |
| 145th Station | | | | | | | | | | |
| 1553 + 00 | 1551/00 | Shoreline | X | X | X | X | X | NORTH 145TH STATION | 0 / +30 | NORTH EGRESS STAIR |
| 1559 + 40 | 1558/40 | Shoreline | X | X | X | X | X | 3RD AVE NE - SIGNAL/TPSS | 0 / +27 | MAINTENANCE STAIR TOWER |
| 1571 + 60 | 1571/60 | Shoreline | X | X | X | X | X | NE 155TH OVERPASS | +28 | SLIDING ACOUSTIC PANEL |
| 1587 + 45 | 1587/45 | Shoreline | X | X | X | X | X | NE 161ST | +15 | STAIR UP EMBANK TO DOOR IN NOISE WALL |
| 1618 + 50 | 1618/50 | Shoreline | X | X | X | X | X | 1ST AVE NE | +2 | DOOR IN NOISE WALL |
| 1626 + 00 | 1626/00 | Shoreline | X | X | X | X | X | NE 175TH OVERPASS | +25 | SLIDING ACOUSTIC PANEL |
| 1648 + 00 | 1648/00 | Shoreline | X | X | X | X | X | 5TH AVE NE | -6 | LADDER NICHE AND DOOR IN NOISE WALL |
| 1657 + 00 | 1657/00 | Shoreline | X | X | X | X | X | SOUTH 185TH STATION | 0 / -25 | SOUTH EGRESS STAIR |
| 185th Station | | | | | | | | | | |
| 1661 + 50 | 1661/50 | Shoreline | X | X | X | X | X | NORTH 185TH STATION | 0 / -20 | NORTH EGRESS STAIR |
| 1683 + 20 | 1683/20 | Shoreline | X | X | X | X | X | NE 195TH ST | -25 | STAIR, SECURITY GATE AND LADDER NICHE |
| 1691 + 00 | 1691/00 | Shoreline | X | X | X | X | X | I-5 SHOULDER | +5 | GATE IN SECURITY FENCING |
| 1712 + 20 | 1712/20 | Mountlake Terrace | X | X | X | X | X | NE 205TH OVERPASS | +55 | SLIDING ACOUSTIC PANEL |
| FD SIGN: Fire Dept Access Sign ETEL: ST Emergency Telephone KNOXBOX: FD Key Storage for entry FDC: Fire Department Connection ID: Intrusion Detection Primary access includes dedicated openings to trainway, FD access signage and ETELS. | | | | | | | | | | |

| L200 / 300 Secondary Access Locations | | | | | | | | | | |
|---|-------------------|---------|------|-----|----|---------|-------------------------|-------------|--------------------------------|--|
| STATIONING | CITY | FD SIGN | ETEL | FDC | ID | KNOXBOX | APPX LOCATION | APPX HEIGHT | ACCESS CONDITION | |
| 1544 + 00 | Seattle | | | | | | NE 145TH OVERPASS | +53 | ACOUSTICAL PANEL | |
| 145th Station | | | | | | | | | | |
| 1577 + 00 | Shoreline | | | | | | I-5 NORTHBOUND SHOULDER | +15 | SECURITY FENCING | |
| 1599 + 00 | Shoreline | | | | | | NE 165TH ST | -4 | SECURITY FENCING | |
| 1601 + 00 to 1618 + 50 | Shoreline | | | | | | CONTINUOUS I-5 | <10 | SECURITY FENCING | |
| 1636 + 00 to 1643 + 00 | Shoreline | | | | | | CONTINUOUS I-5 | <10 | SECURITY FENCING | |
| 1664 + 00 to 1688 + 50 | Shoreline | | | | | | CONTINUOUS I-5 | <10 | SECURITY FENCING | |
| 185th Station | | | | | | | | | | |
| 1666 + 00 | Shoreline | | | | | X | NE 189TH HI-RAIL / TPSS | 0 | GATE IN SECURITY WALL/FENCING | |
| 1702 + 80 | Shoreline | | | | | | I-5 OFF-RAMP OVERPASS | +30 | CABLE RAIL | |
| Mountlake Terrace Station | | | | | | | | | | |
| 1767 + 50 | Mountlake Terrace | | | | | | 227TH ST SW | 0 | EXIST DOOR IN WSDOT NOISE WALL | |
| FD SIGN: Fire Dept Access Sign ETEL: ST Emergency Telephone KNOXBOX: FD Key Storage for entry FDC: Fire Department Connection ID: Intrusion Detection Secondary access locations do not make special provisions for access unless noted otherwise. | | | | | | | | | | |

SOUND TRANSIT LYNNWOOD LINK EXTENSION



- | | | | | | | | | | |
|--|-------------------------------------|--|-----------------------|--|------------------------------|--|--------------------------------|--|--------------------|
| | POSSIBLE EMERGENCY ACCESS LOCATIONS | | EXISTING FIRE HYDRANT | | PROPOSED FIRE HYDRANT | | FDC FIRE DEPARTMENT CONNECTION | | MAINTENANCE ACCESS |
| | EOP END OF PLATFORM | | FD ACCESS AND SIGN | | LENGTH BETWEEN ACCESS POINTS | | FDC FIRE DEPARTMENT CONNECTION | | SECONDARY ACCESS |



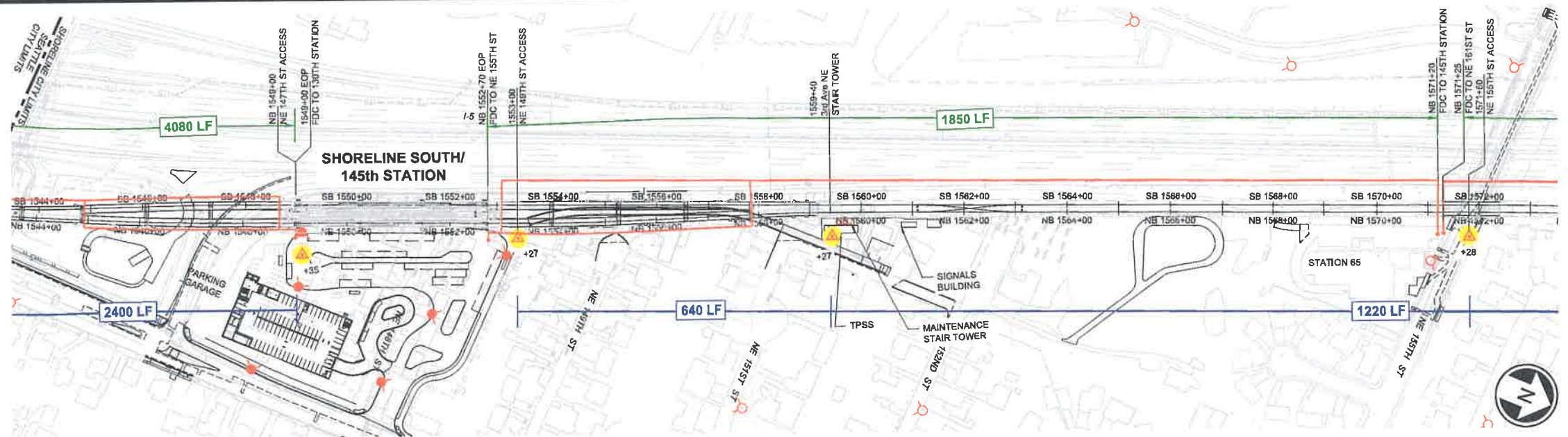
C:\Users\spornoy\desktop\exhibits\PP04.dwg Apr 02, 2018 - 10:56am



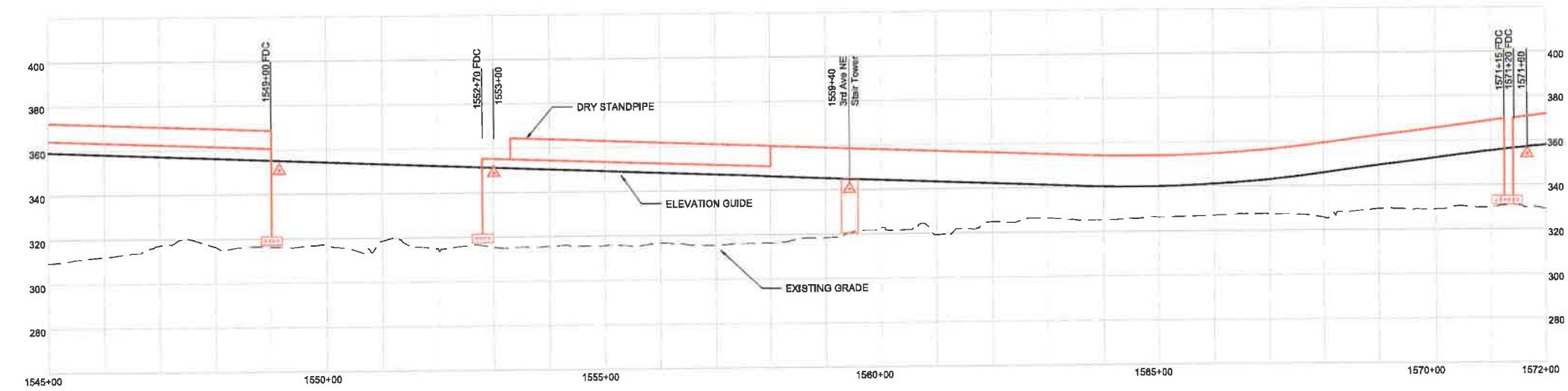
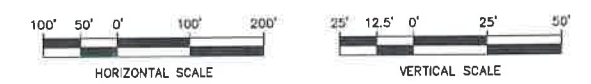
**WORKING
EMERGENCY ACCESS
TRACK PLAN & PROFILE
SEATTLE/SHORELINE**

DWG NO. PR-PP04
SHEET 4 OF 17
REV. NO. 03/30/18

SOUND TRANSIT LYNNWOOD LINK EXTENSION



- | | | | | | | | | | |
|--|-------------------------------------|--|-----------------------|--|------------------------------|--|--------------------------------|--|-------------------|
| | POSSIBLE EMERGENCY ACCESS LOCATIONS | | EXISTING FIRE HYDRANT | | PROPOSED FIRE HYDRANT | | FDC FIRE DEPARTMENT CONNECTION | | MANTENANCE ACCESS |
| | EMERGENCY ACCESS | | EMERGENCY ACCESS | | LENGTH BETWEEN ACCESS POINTS | | FDC FIRE DEPARTMENT CONNECTION | | SECONDARY ACCESS |
| | EOP END OF PLATFORM | | | | | | | | |



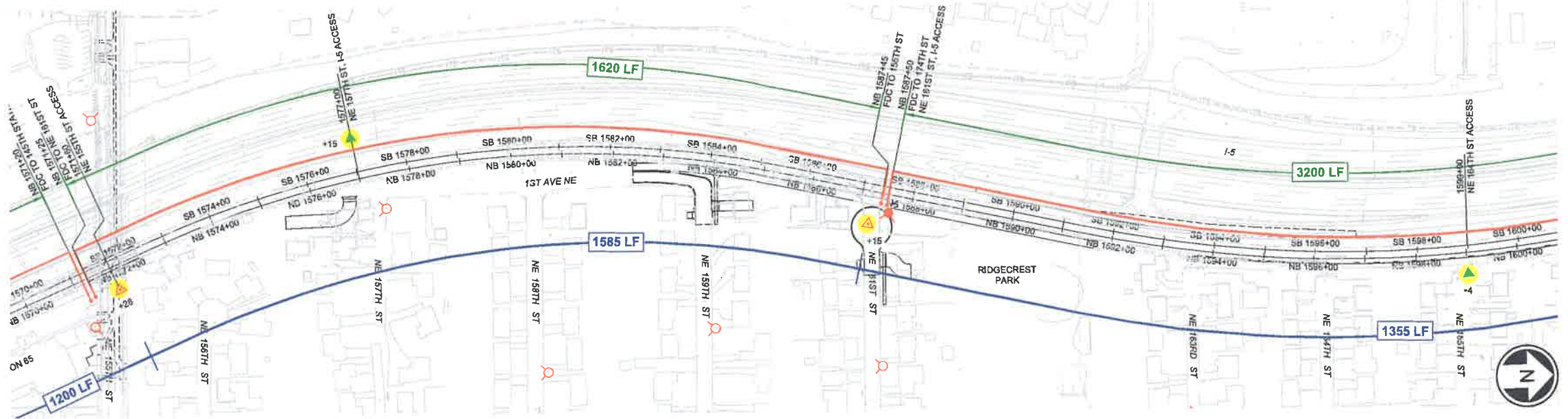
C:\Users\apornyi\Desktop\exhibits\PP05.dwg Apr 02, 2018 - 12:50pm



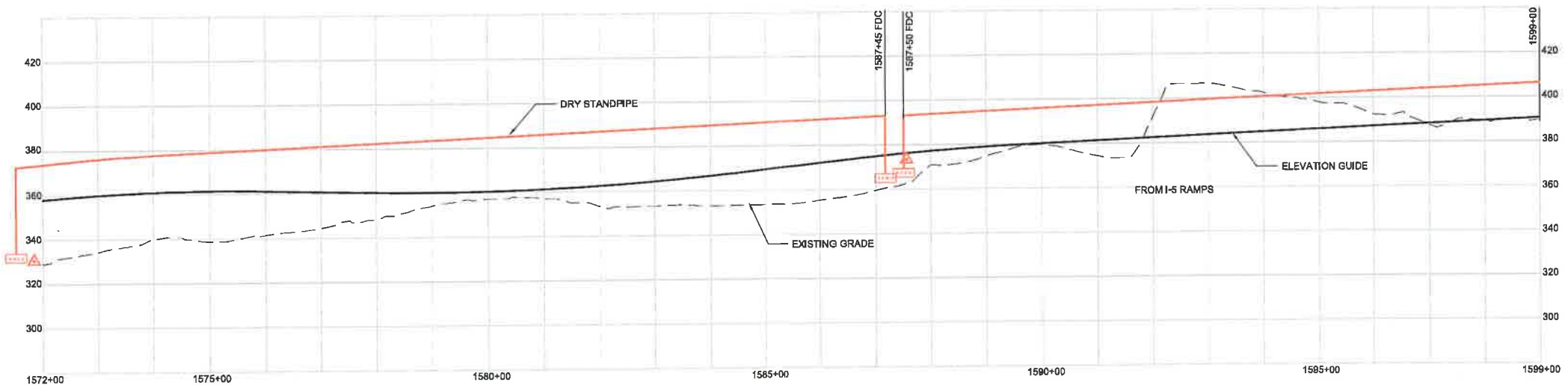
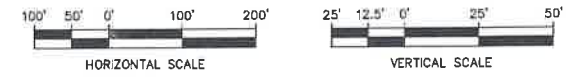
**WORKING
EMERGENCY ACCESS
TRACK PLAN & PROFILE
SHORELINE**

DWG NO. PR-PP05
SHEET 5 OF 17
REV. NO. 03/30/18

SOUND TRANSIT LYNNWOOD LINK EXTENSION



- | | | | | |
|-------------------------------------|-----------------------|------------------------------|--------------------------------|--------------------|
| POSSIBLE EMERGENCY ACCESS LOCATIONS | EXISTING FIRE HYDRANT | PROPOSED FIRE HYDRANT | FDC FIRE DEPARTMENT CONNECTION | MAINTENANCE ACCESS |
| EOP END OF PLATFORM | EMERGENCY ACCESS | LENGTH BETWEEN ACCESS POINTS | FDC FIRE DEPARTMENT CONNECTION | SECONDARY ACCESS |



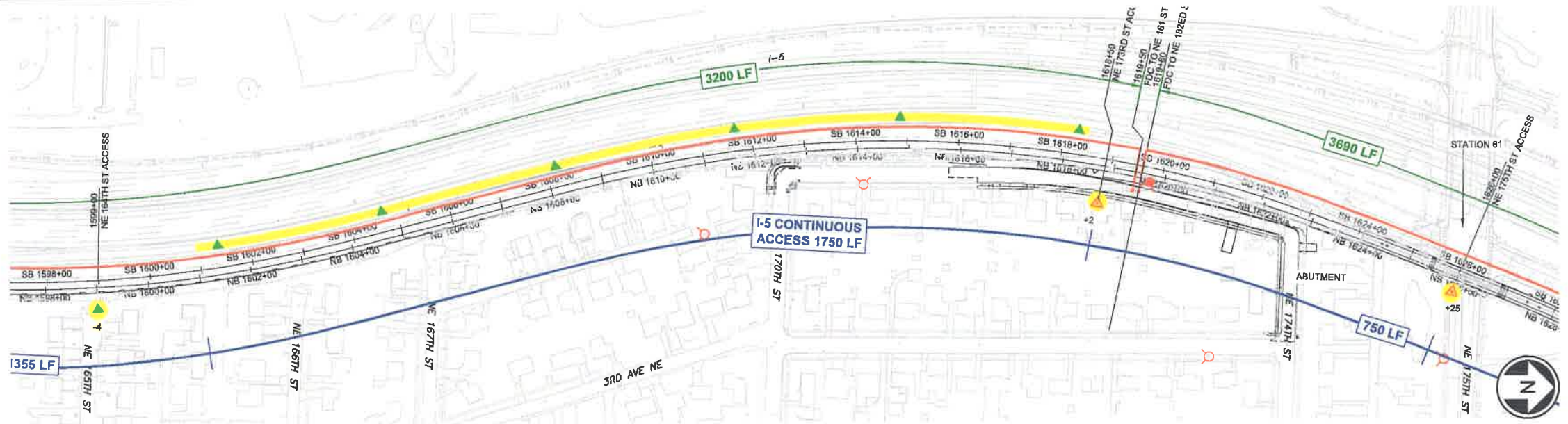
C:\Users\spornyt\Desktop\exhibit\PP06.dwg Apr 02, 2018 - 10:58am



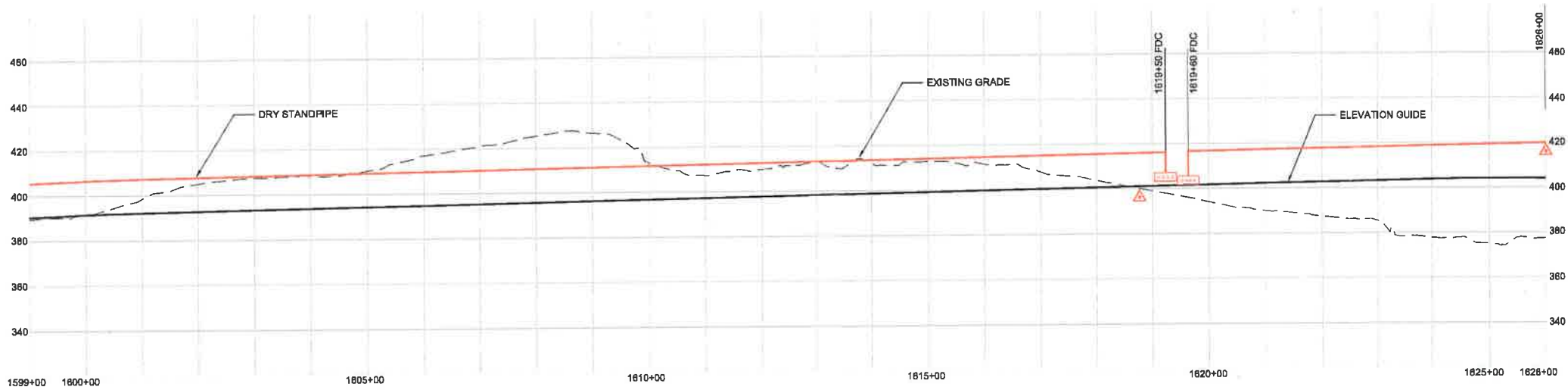
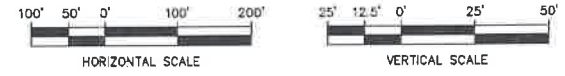
**WORKING
EMERGENCY ACCESS
TRACK PLAN & PROFILE
SHORELINE**

DWG NO. PR-PP06
SHEET 6 OF 17
REV. NO. 03/30/18

SOUND TRANSIT LYNNWOOD LINK EXTENSION



- | | | | | |
|---------------------------|-----------------------|------------------------------|--------------------------------|--------------------|
| AT GRADE EMERGENCY ACCESS | EXISTING FIRE HYDRANT | PROPOSED FIRE HYDRANT | FDC FIRE DEPARTMENT CONNECTION | MAINTENANCE ACCESS |
| EOP END OF PLATFORM | EMERGENCY ACCESS | LENGTH BETWEEN ACCESS POINTS | FDC FIRE DEPARTMENT CONNECTION | SECONDARY ACCESS |



C:\Users\paporoyi\Desktop\exhibits\PP07.dwg Apr. 02, 2018 10:55am



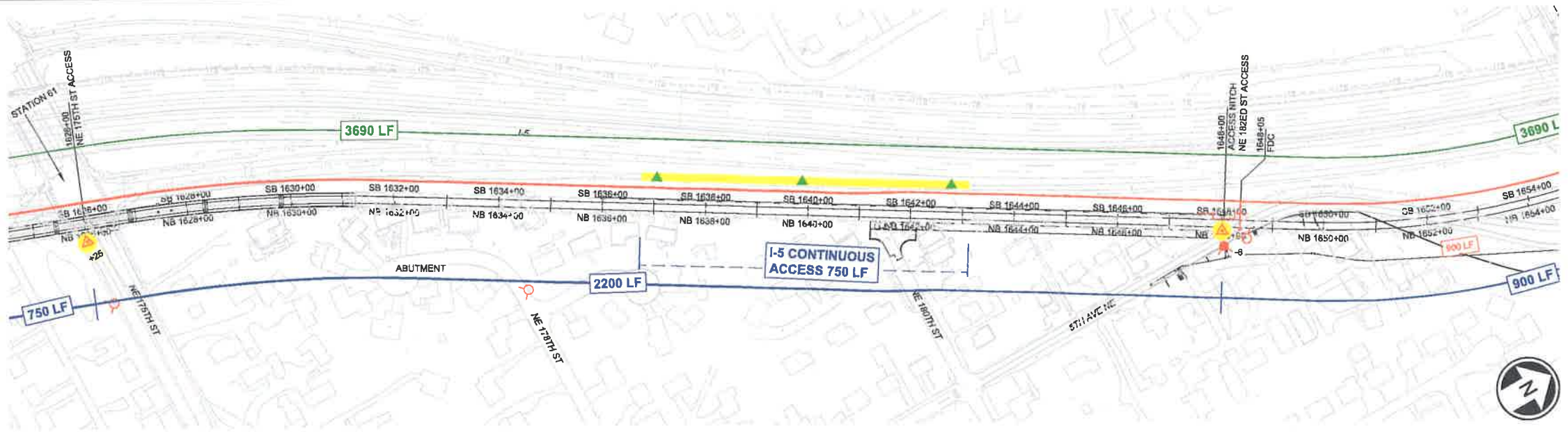
**WORKING
EMERGENCY ACCESS
TRACK PLAN & PROFILE
SHORELINE**

DWG NO. PR-PP07

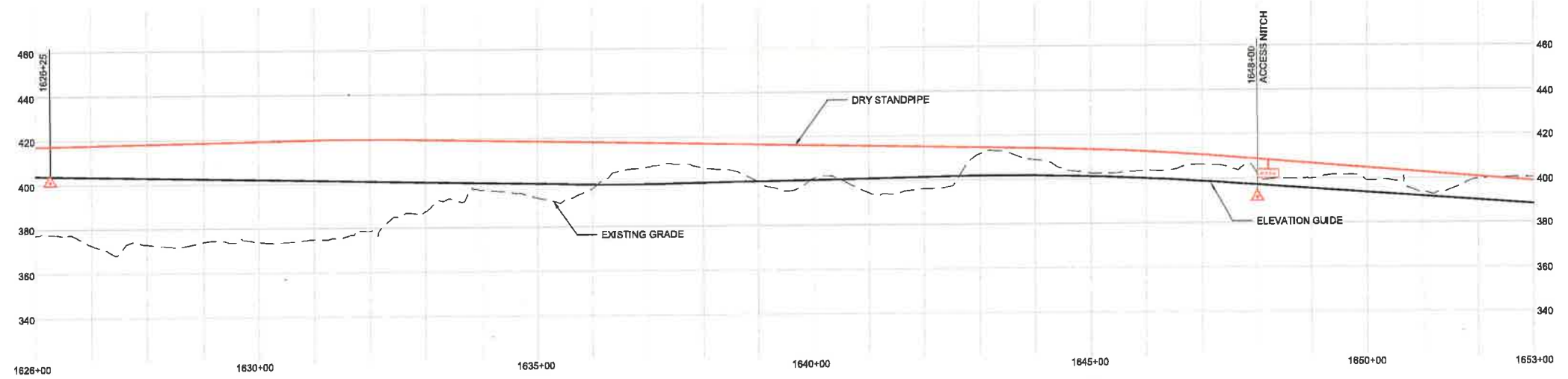
SHEET 7 OF 17

REV. NO. 03/30/18

SOUND TRANSIT LYNNWOOD LINK EXTENSION



- | | | | | |
|---------------------------|-----------------------|------------------------------|--------------------------------|--------------------|
| AT GRADE EMERGENCY ACCESS | EXISTING FIRE HYDRANT | PROPOSED FIRE HYDRANT | FDC FIRE DEPARTMENT CONNECTION | MAINTENANCE ACCESS |
| EOP END OF PLATFORM | EMERGENCY ACCESS | LENGTH BETWEEN ACCESS POINTS | FDC FIRE DEPARTMENT CONNECTION | SECONDARY ACCESS |



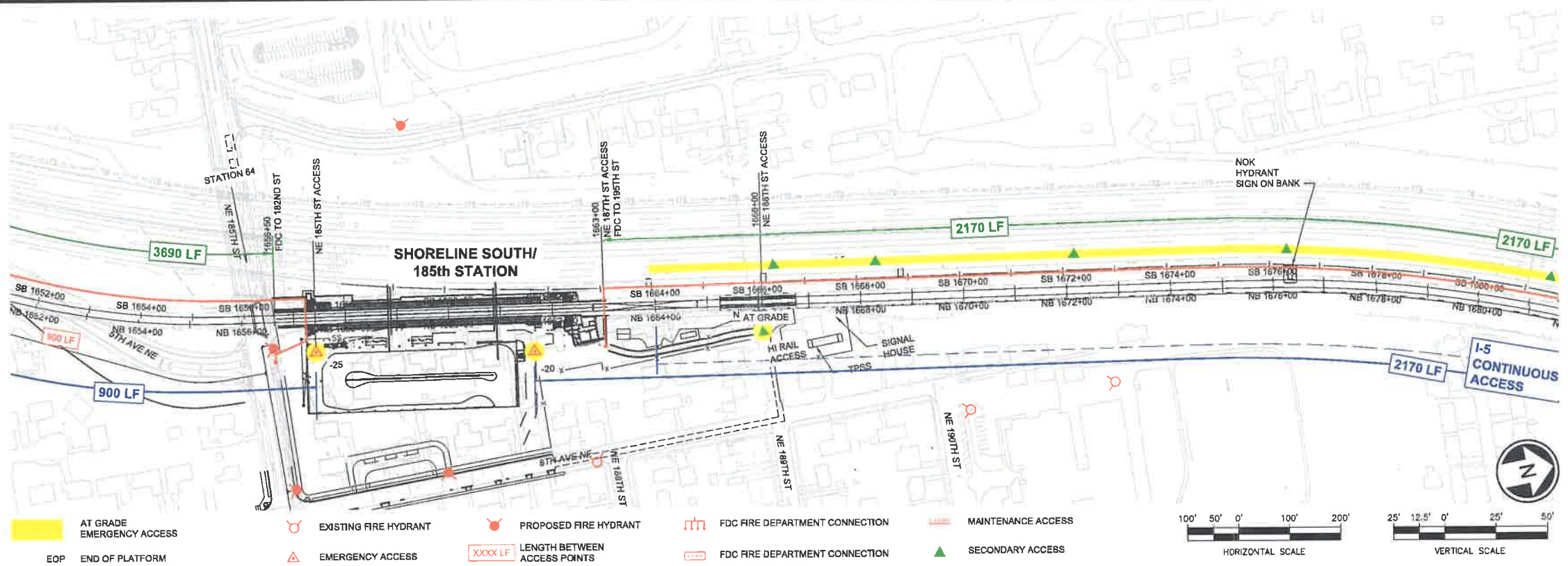
C:\Users\apornoy\l\Desktop\exhibits\PP08.dwg Apr 02, 2018 10:35am



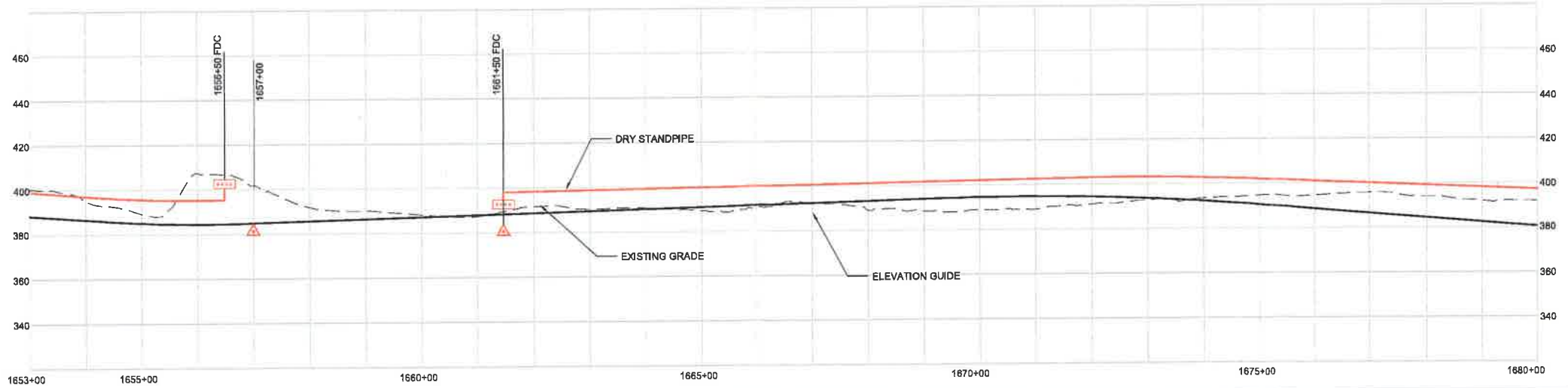
**WORKING
EMERGENCY ACCESS
TRACK PLAN & PROFILE
SHORELINE**

DWG NO. PR-PP08
SHEET 8 OF 17
REV. NO. 03/30/18

SOUND TRANSIT LYNNWOOD LINK EXTENSION



- | | | | | | | |
|---------------------------|-----------------------|------------------------------|--------------------------------|--------------------|-----------------------|----------------------|
| AT GRADE EMERGENCY ACCESS | EXISTING FIRE HYDRANT | PROPOSED FIRE HYDRANT | FDC FIRE DEPARTMENT CONNECTION | MAINTENANCE ACCESS | 100' 50' 0' 100' 200' | 25' 12.5' 0' 25' 50' |
| EOP END OF PLATFORM | EMERGENCY ACCESS | LENGTH BETWEEN ACCESS POINTS | FDC FIRE DEPARTMENT CONNECTION | SECONDARY ACCESS | HORIZONTAL SCALE | VERTICAL SCALE |



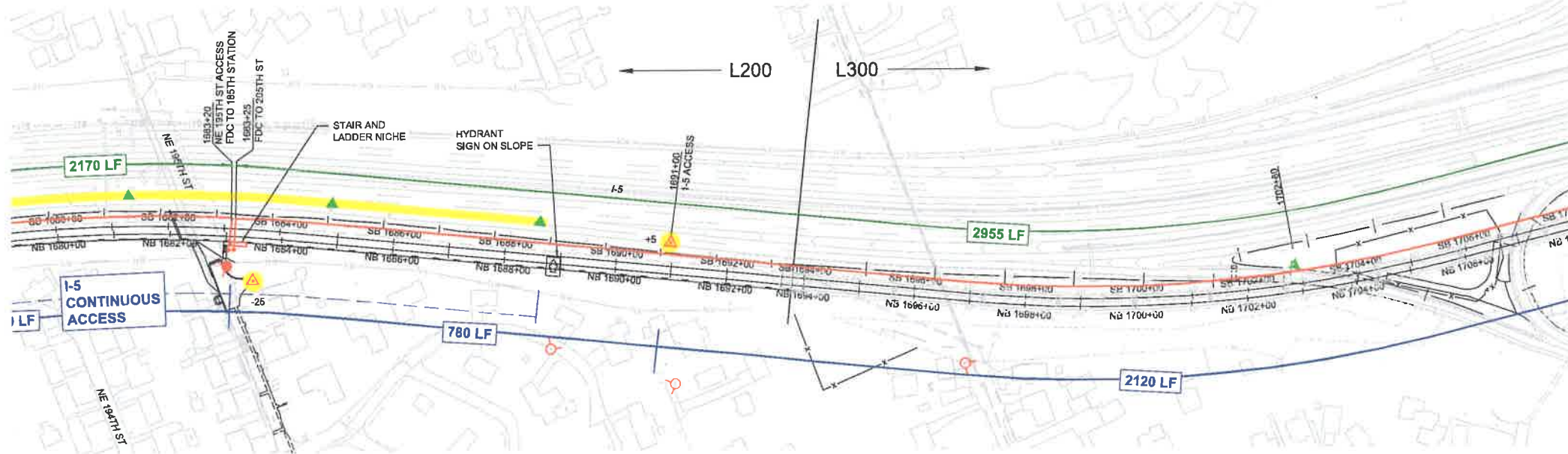
C:\Users\oparoyi\Desktop\exhibits\PP09.dwg Apr. 02, 2018 10:39am



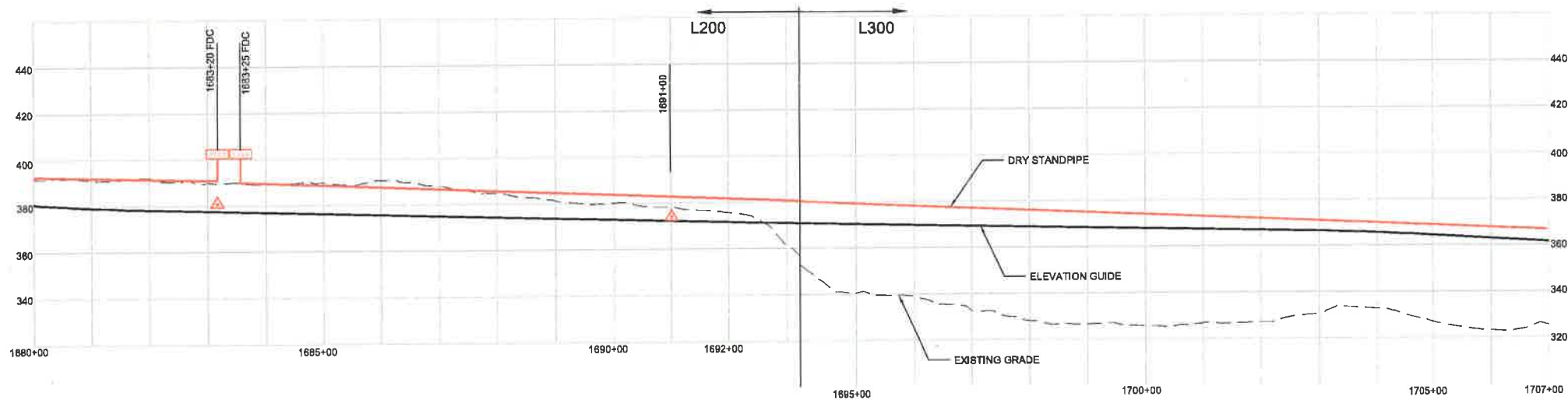
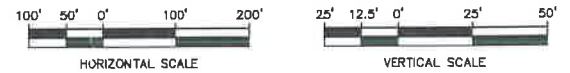
**WORKING
EMERGENCY ACCESS
TRACK PLAN & PROFILE
SHORELINE**

DWG NO. PR-PP09
SHEET 9 OF 17
REV. NO. 03/30/18

SOUND TRANSIT LYNNWOOD LINK EXTENSION



- | | | | | | |
|---------------------------|-----------------------|------------------------------|--------------------------------|--------------------------------|--------------------|
| AT GRADE EMERGENCY ACCESS | EXISTING FIRE HYDRANT | PROPOSED FIRE HYDRANT | FDC FIRE DEPARTMENT CONNECTION | FDC FIRE DEPARTMENT CONNECTION | MAINTENANCE ACCESS |
| EOP END OF PLATFORM | EMERGENCY ACCESS | LENGTH BETWEEN ACCESS POINTS | FDC FIRE DEPARTMENT CONNECTION | SECONDARY ACCESS | |



C:\Users\spoonaj\Desktop\submittal\PP10.dwg Apr 02, 2018 - 10:35am



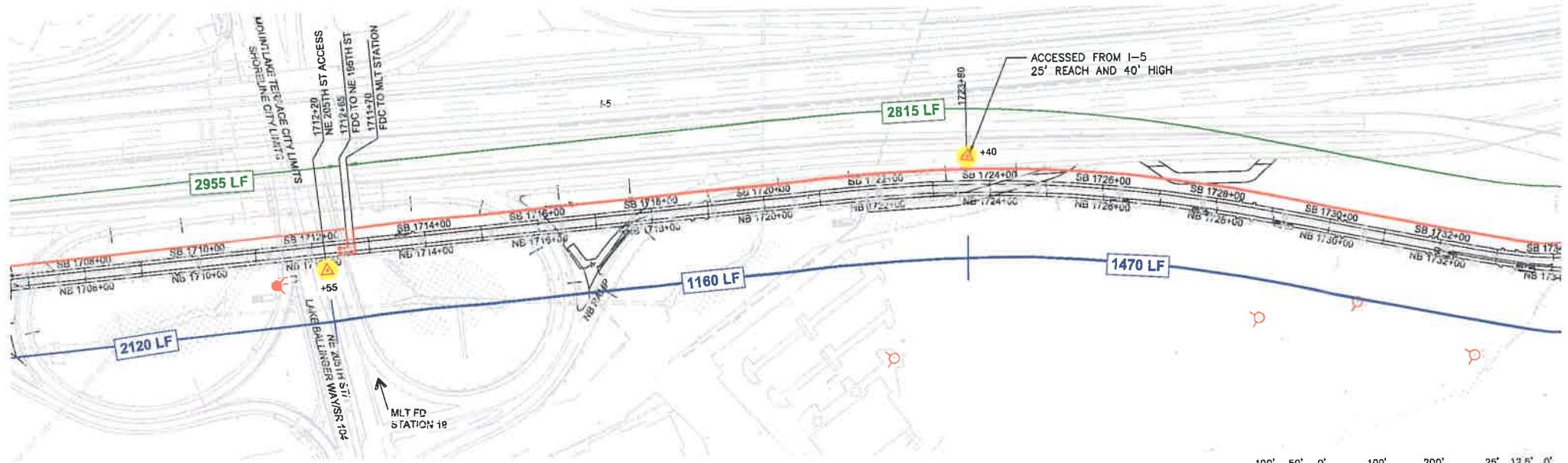
**WORKING
EMERGENCY ACCESS
TRACK PLAN & PROFILE
SHORELINE**

DWG NO. PR-PP10

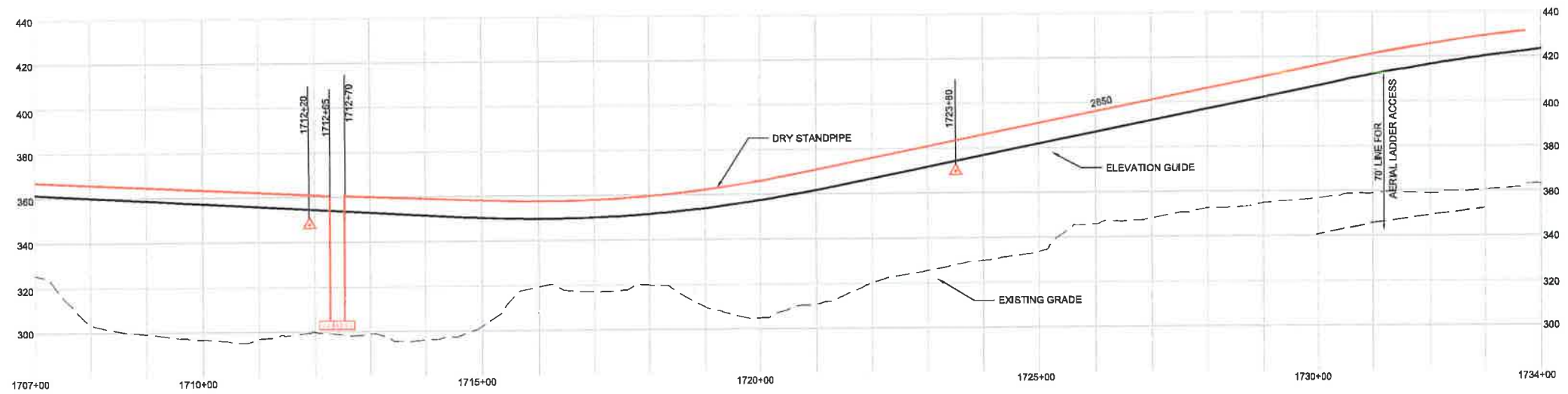
SHEET 10 OF 17

REV. NO. 03/30/18

SOUND TRANSIT LYNNWOOD LINK EXTENSION



- POSSIBLE EMERGENCY ACCESS LOCATIONS
- EXISTING FIRE HYDRANT
- PROPOSED FIRE HYDRANT
- FDC FIRE DEPARTMENT CONNECTION
- MAINTENANCE ACCESS
- EOP END OF PLATFORM
- EMERGENCY ACCESS
- XXXX LF LENGTH BETWEEN ACCESS POINTS
- FDC FIRE DEPARTMENT CONNECTION
- SECONDARY ACCESS



C:\Users\perryo\OneDrive\Desktop\exhibits\PP11.dwg Apr 02, 2018 - 10:41am



**WORKING
EMERGENCY ACCESS
TRACK PLAN & PROFILE
SHORELINE/MOUNT LAKE TERRACE**

DWG NO. PR-PP11
SHEET 11 OF 17
REV. NO. 03/30/18