

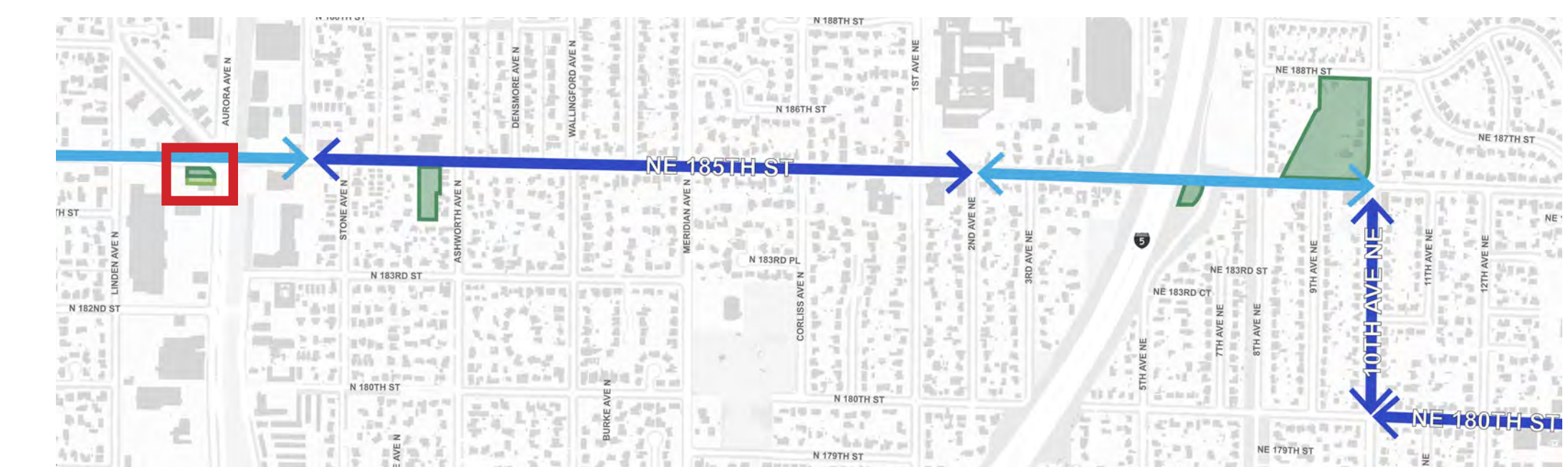
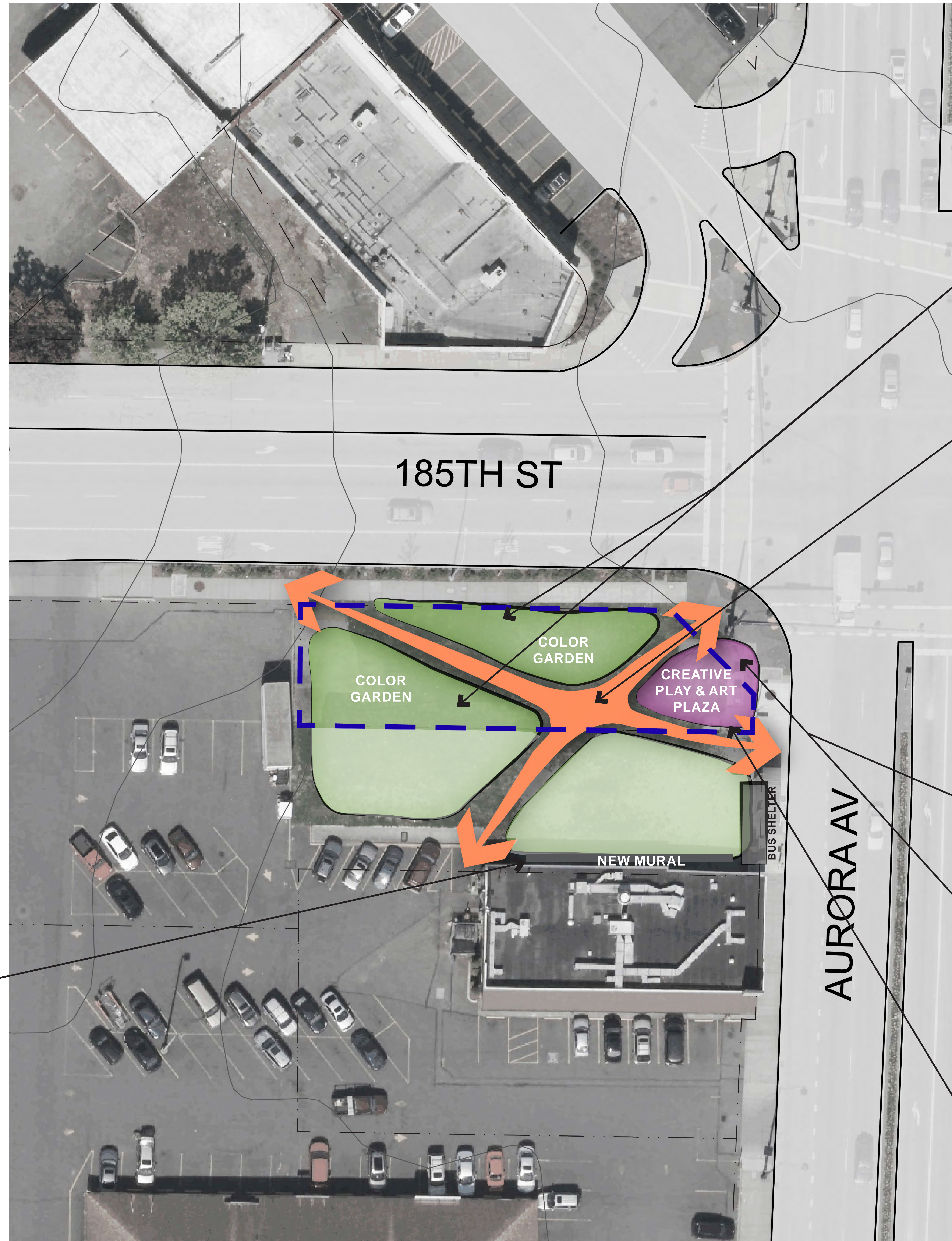
# SITE 1: OPEN SPACE AT AURORA AVE N & N 185TH ST

## OPPORTUNITIES:

- Part of linear art network of city-owned properties along Aurora Ave N
- Complement new mural on the side of Spiros
- Historic connection to nearby Shoreline Historical Museum and historic music/jazz presence in Shoreline
- Active play zone/musical art near bus stop
- Bike parking
- Formalize desire lines into pathways
- Low-scale beautification on the rest of site
  - Perennials/planting beds
  - Crushed gravel paths

## CONSTRAINTS:

- Kroger owns half the lot
- Very busy intersection
- Above ground utilities at front of site limit access from Aurora.

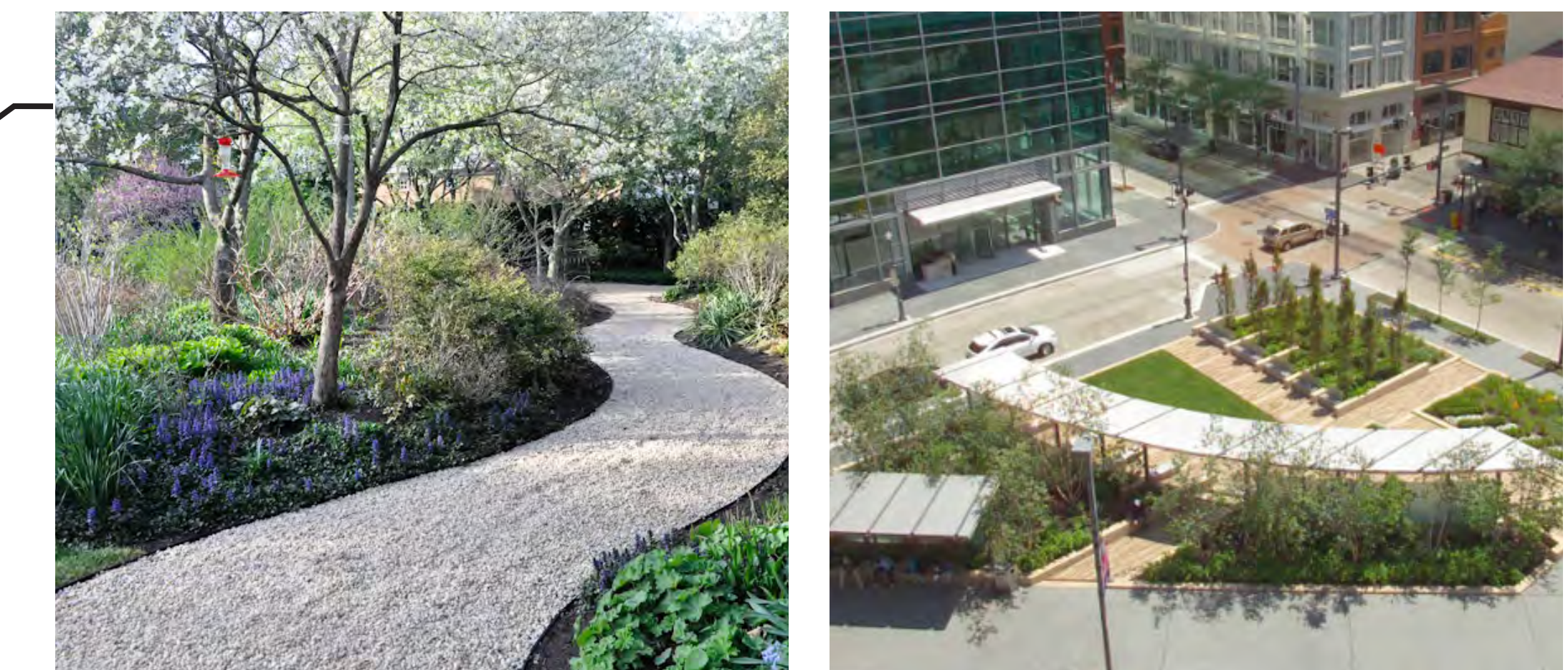


## DESIGN IDEAS:

### COLORFUL PLANTINGS



### PATHWAYS



### FITNESS ZONE



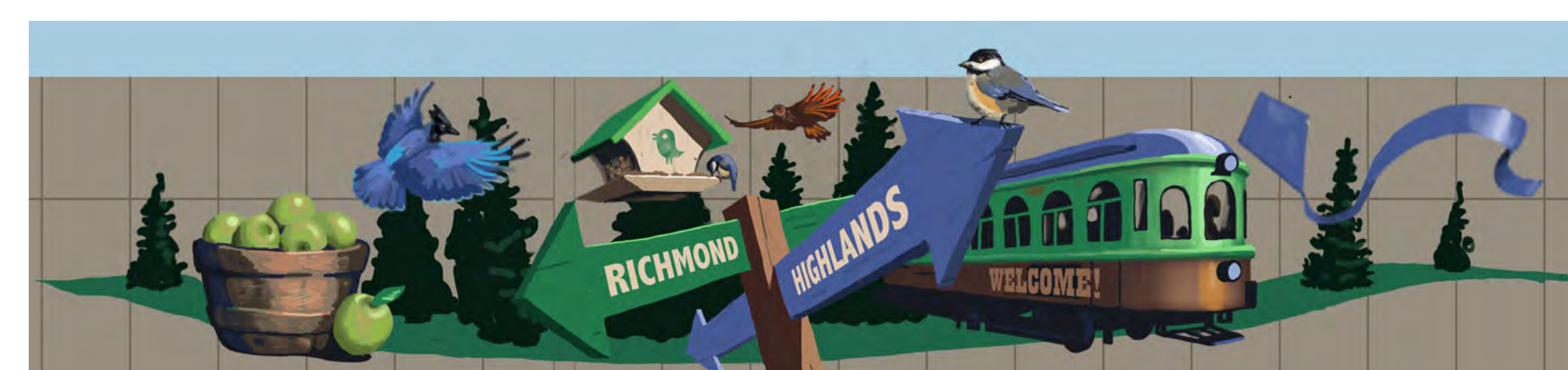
### CREATIVE PLAY AND MUSICAL ART



### BIKE PARKING



AERIAL VIEW OF SITE



RICHMOND HIGHLANDS GATEWAY MURAL PROJECT

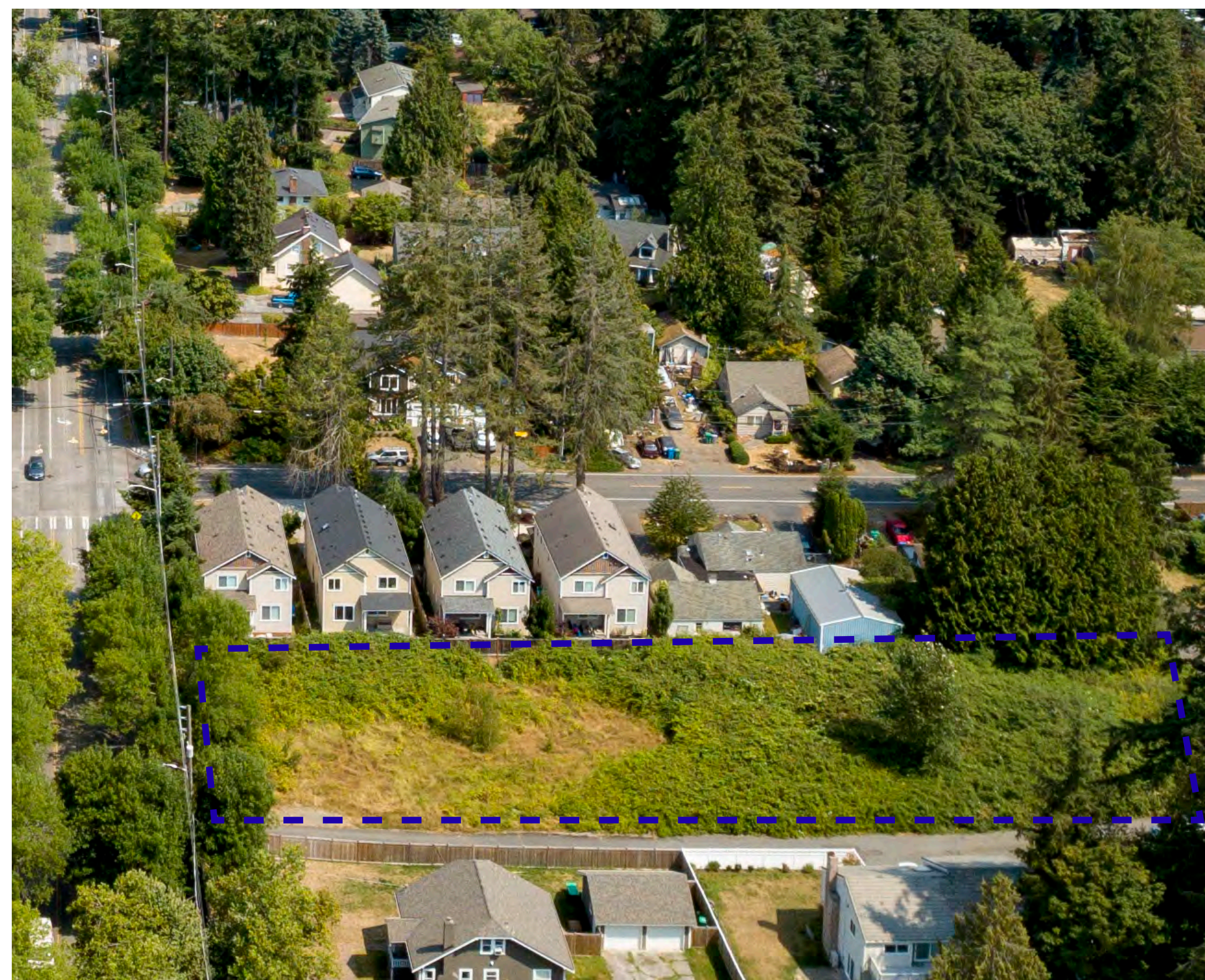
# SITE 2: ASHWORTH AVE N & N 185TH ST

## OPPORTUNITIES:

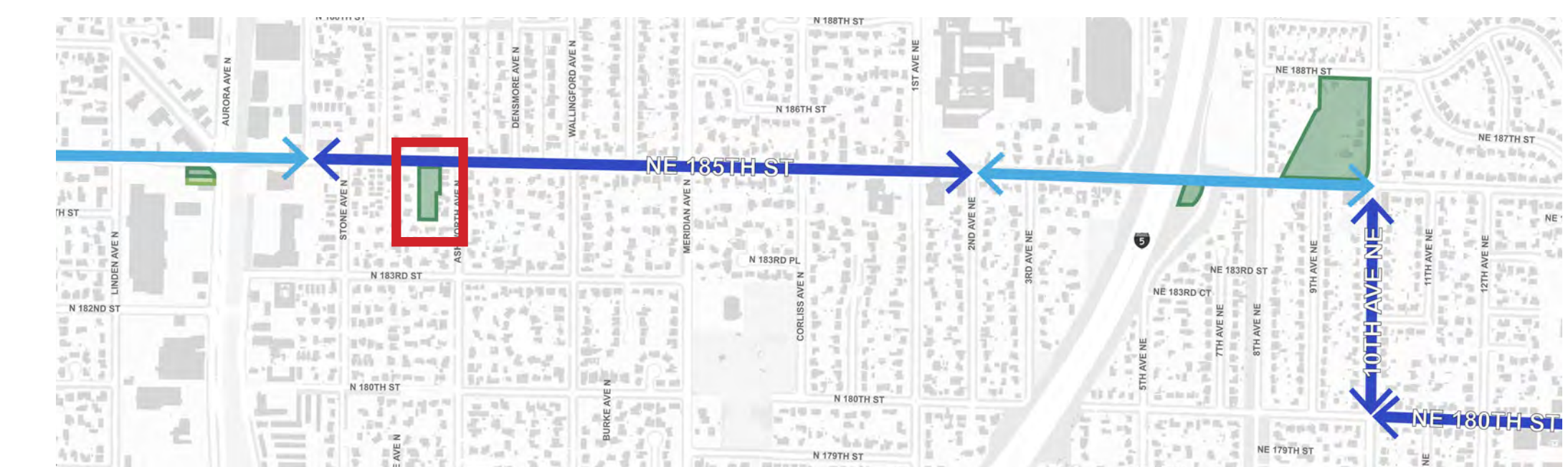
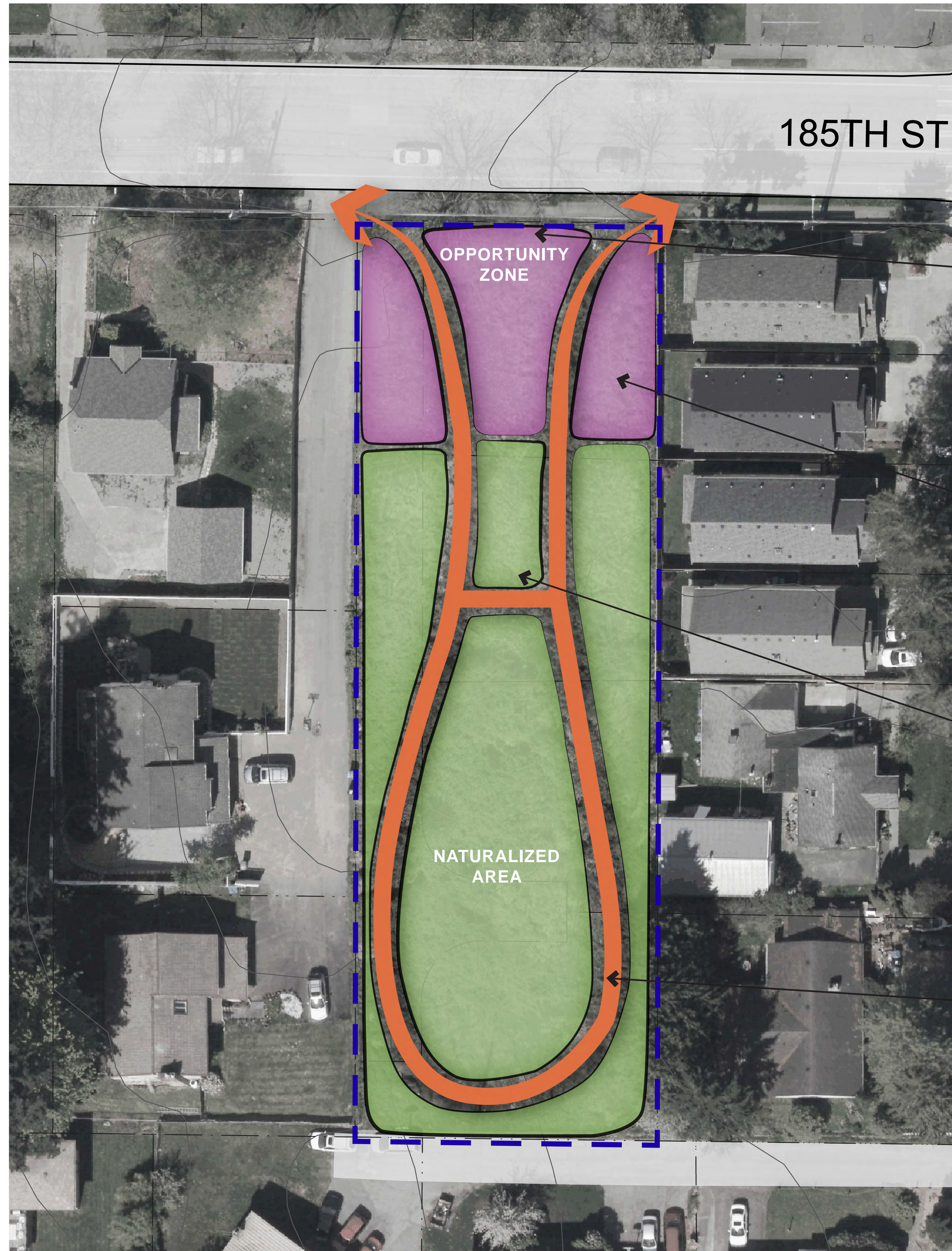
- Naturalize Area
  - Perimeter trail
  - Interpretive signage
  - Exercise equipment along trail
- Active use concentrated along N 185th St with environmental education elements
- Fitness Zone
- Seating
- Placemaking elements
- Nature play features

## CONSTRAINTS:

- High water table limits possibilities for development or active use
- Proximity to single-family residential limits possibilities for noise and crowd generating uses
- Potential King County Conservation Futures funding
  - Limits use to passive use (very wet)
  - 15% of parcel could be active use



AERIAL VIEW OF SITE

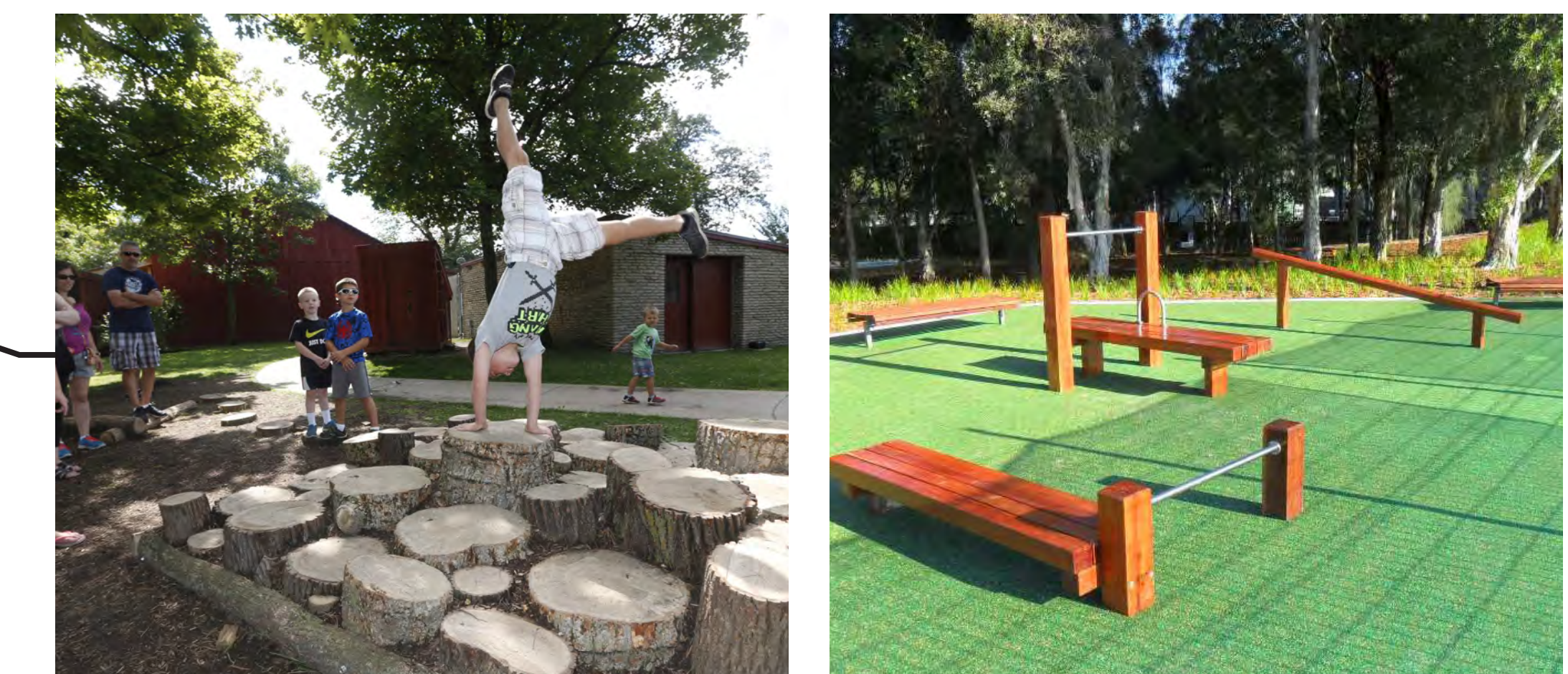


## DESIGN IDEAS:

### EDUCATIONAL / PLACEMAKING ELEMENTS



### NATURE PLAY / FITNESS ZONE



### SEATING AND INTERPRETATION



### BOARDWALK PERIMETER PATH



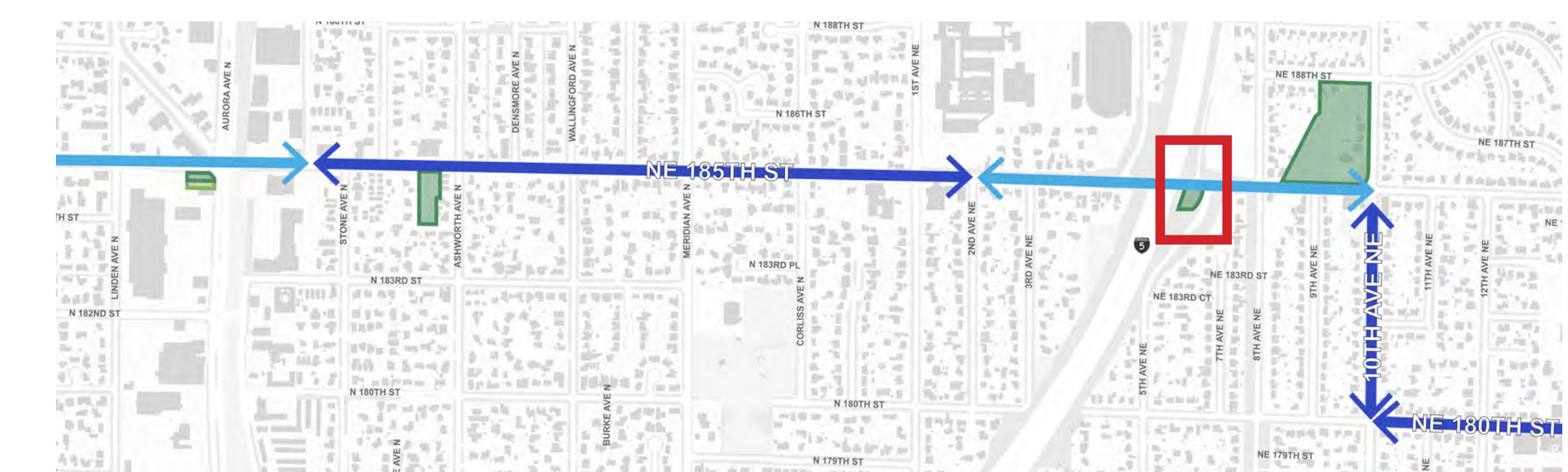
# SITE 3: TRAILHEAD AT THE STATION

## OPPORTUNITIES:

- Trailhead amenities such as places to gather and meet, shelter, bike repair tools, and water
- Placemaking with public art
- Charge/Re-charge stop
  - Solar collecting features can allow for device charging and net-zero site energy usage
  - Whimsical seating to pause and rest

## CONSTRAINTS:

- Site is constrained by Sound Transit wall and Trail Along the Rail
- Steep grades to the south may require site walls



## DESIGN IDEAS:

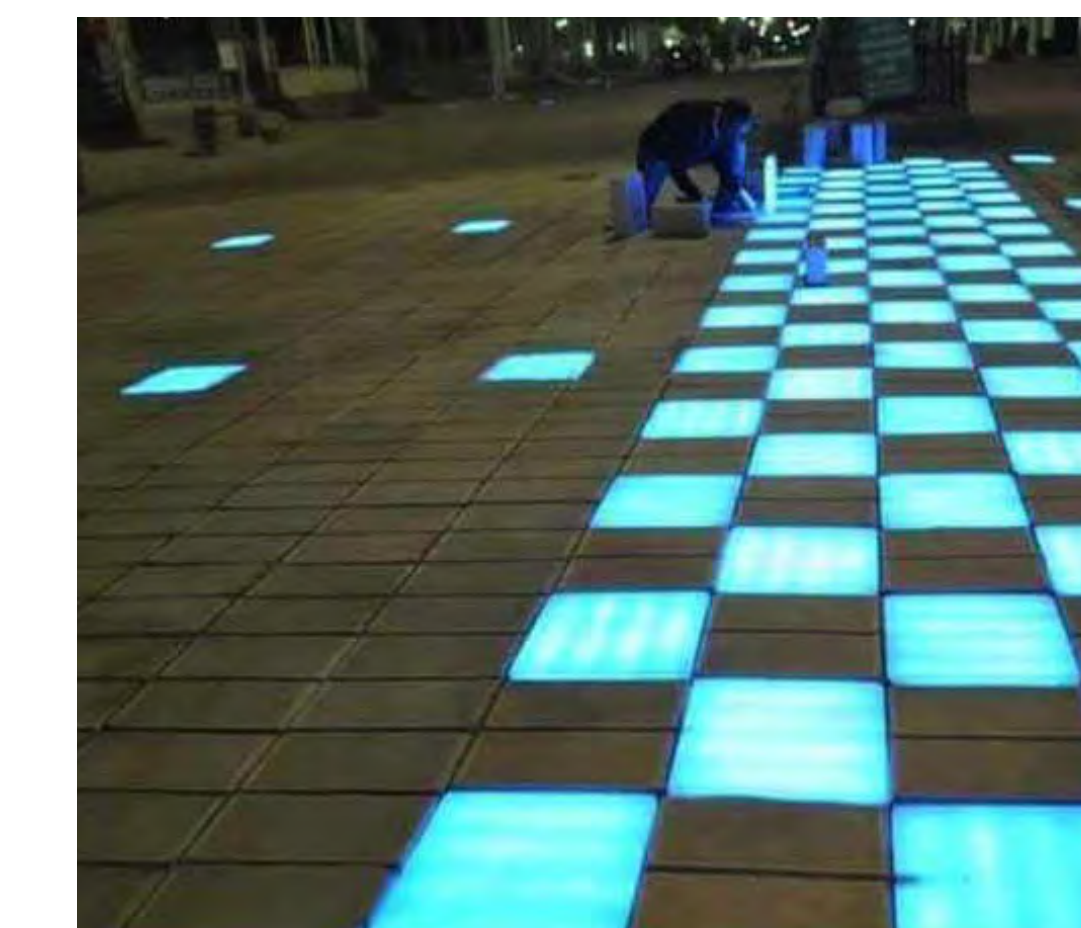
### TRAILHEAD AMENITIES



### CHARGE/RECHARGE SPACES



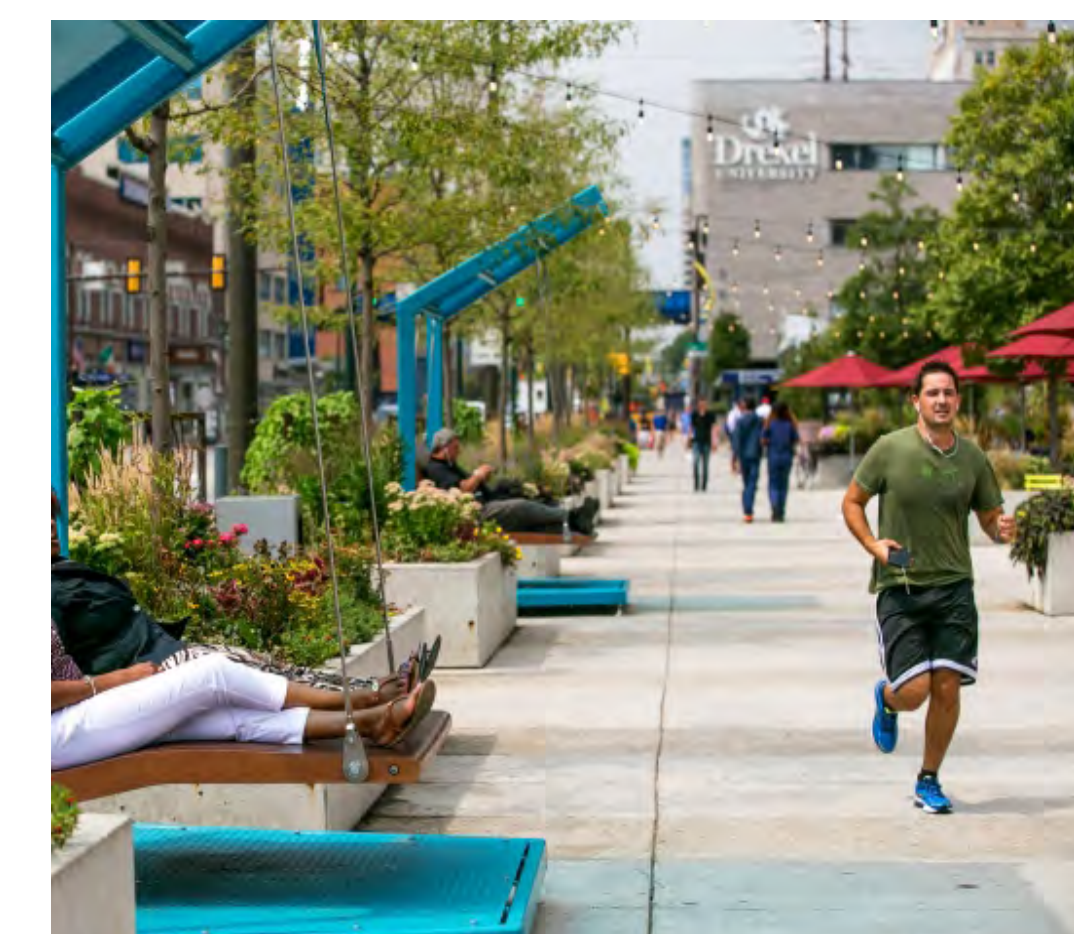
### SOLAR TREES AND PAVING



### SWALE ALONG THE TRAIL / NATIVE PLANTS



### PUBLIC ART / PLACEMAKING



AERIAL VIEW OF SITE

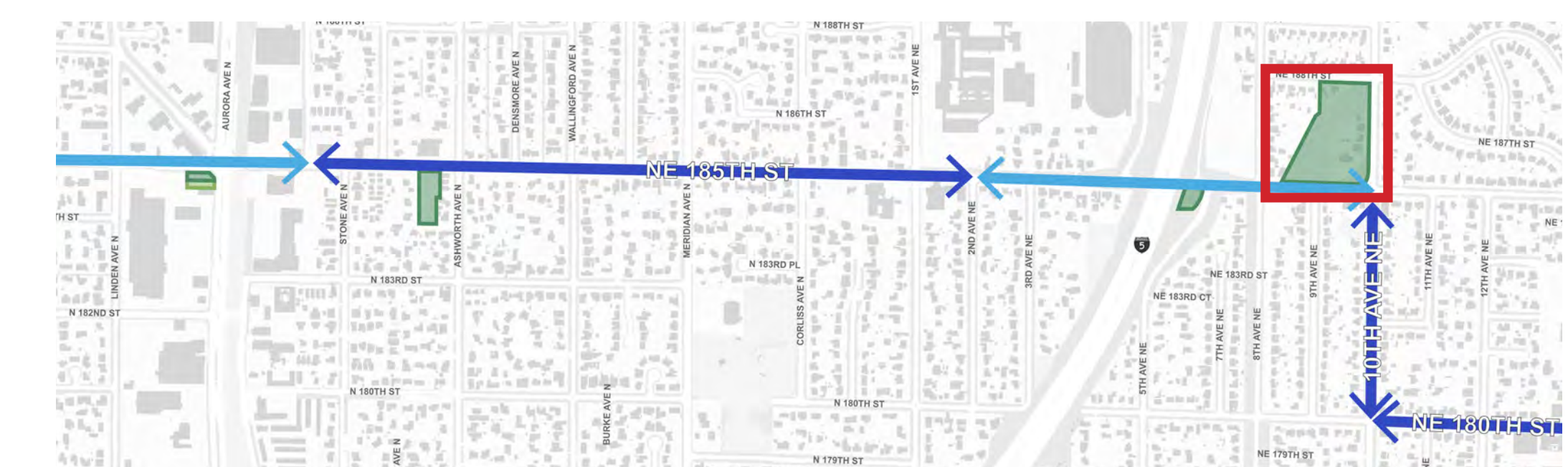
# SITE 4: ROTARY PARK

## OPPORTUNITIES:

- New large open space in the most dense zoning in Shoreline
- Formalized trail connection from 185th to 188th
  - Intersecting loop trails connect to sidewalks on all sides for exercise opportunities
- Potential innovative energy demonstrations (wind, solar) with Seattle City Light partnership
- Family-friendly park amenities
  - Amphitheater
  - Grass lawns
  - Splash Park
  - Play spaces
- Flexible Programming in lower south-west and linear middle parcel
  - Community Garden
  - Food Truck pull-in area
  - Off-leash dog area
- Use geometry and grade for seating/skate/interactive features
  - Small spaces for activities

## CONSTRAINTS:

- Multiple owners (SPU, SCL) with limitations on access and type/longevity of programming



## DESIGN IDEAS:

### FLEXIBLE LAWN SPACE / STAGE AREA



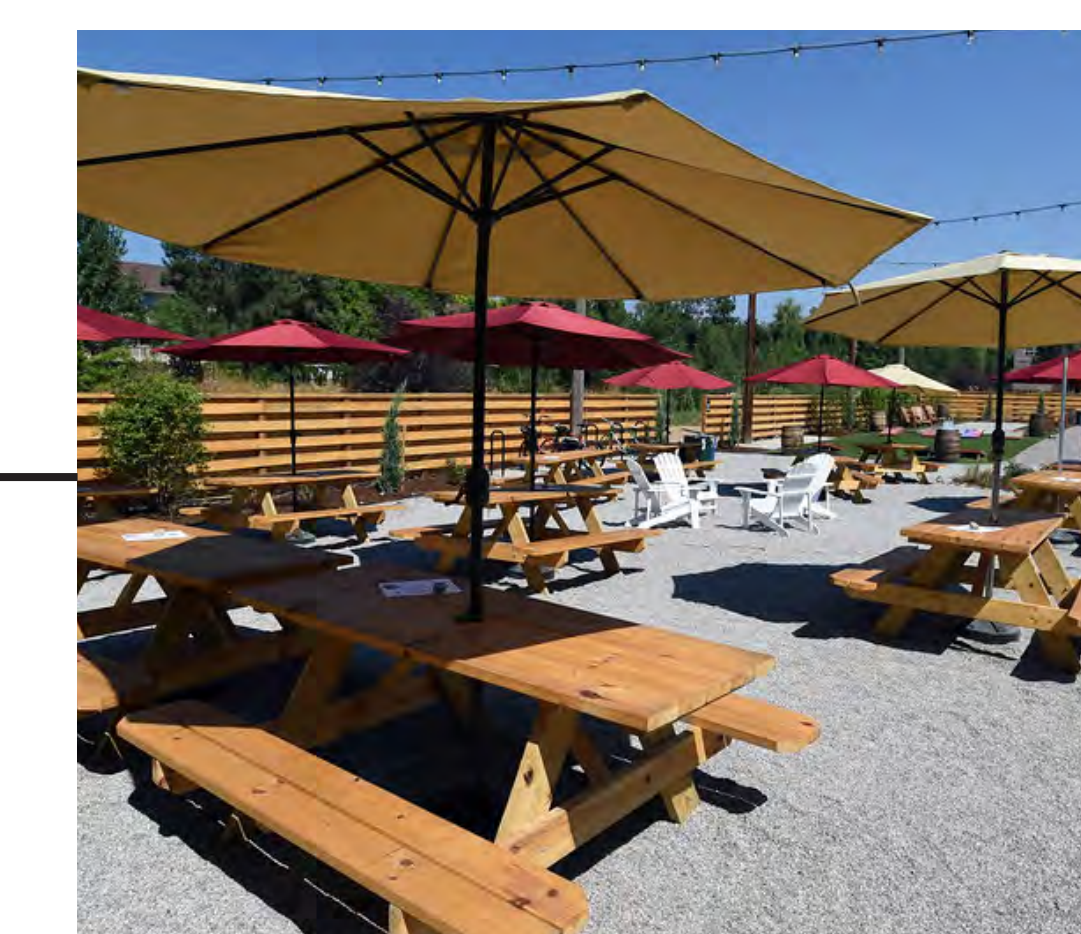
### PATH AND DOG PLAY



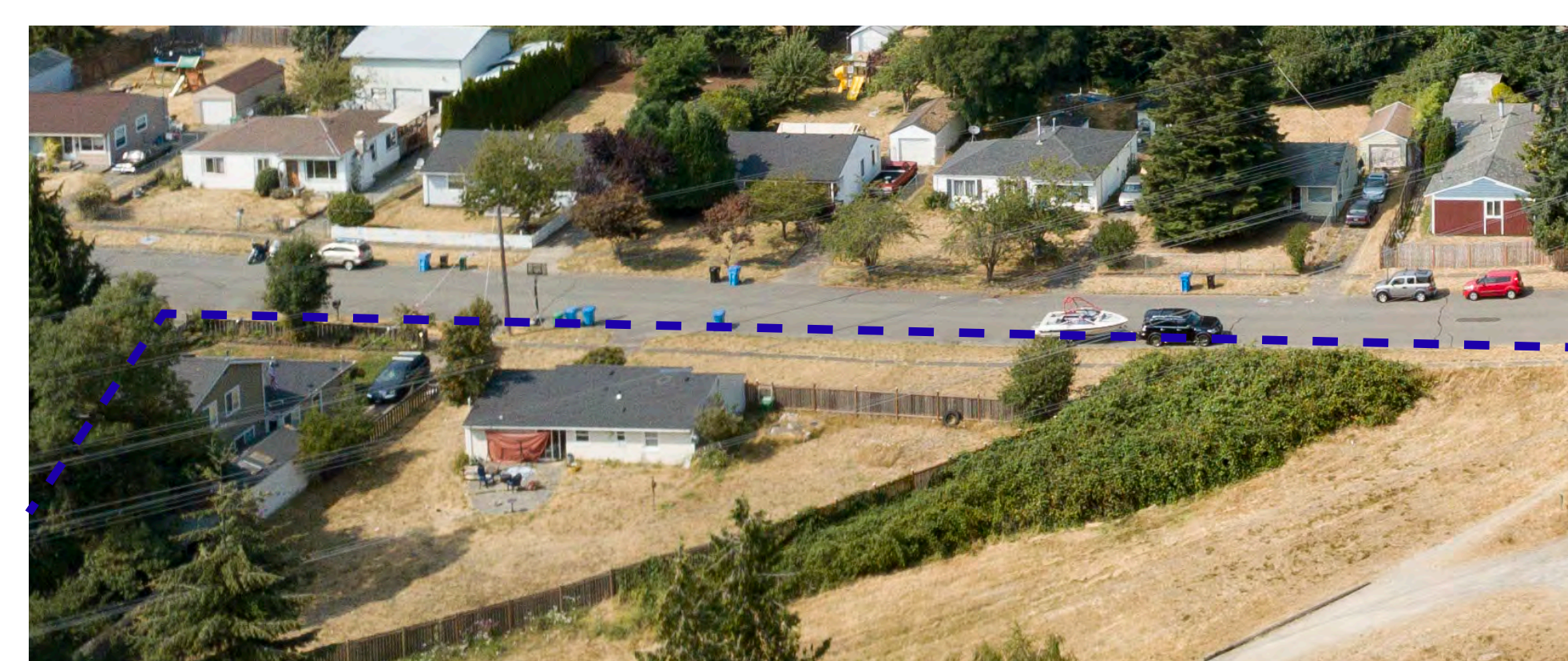
### PLAY AREA / SPLASH PARK



### PICNIC TABLES / SEATING



### FOOD TRUCKS / COMMUNITY GARDEN



AERIAL VIEW OF SITE