



“CENTERS OF GRAVITY” Group Art Exhibition

June 9 – September 21, 2018

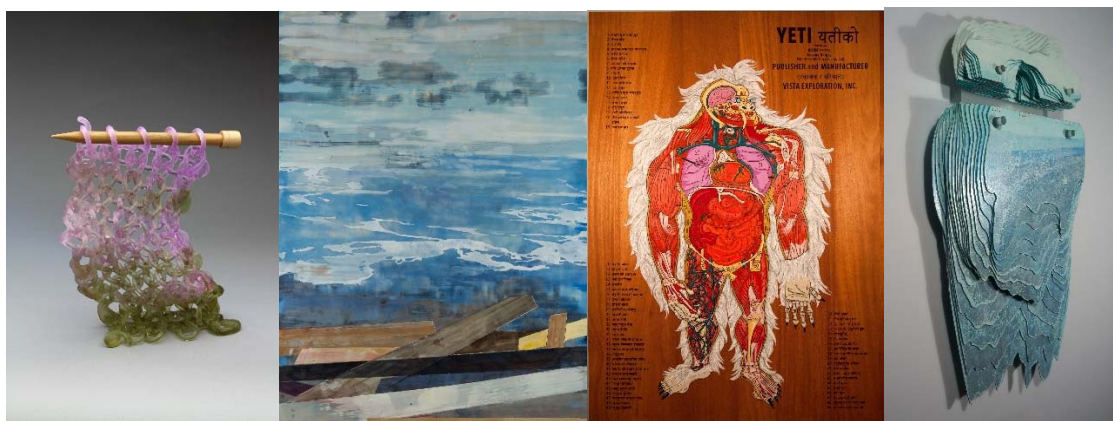
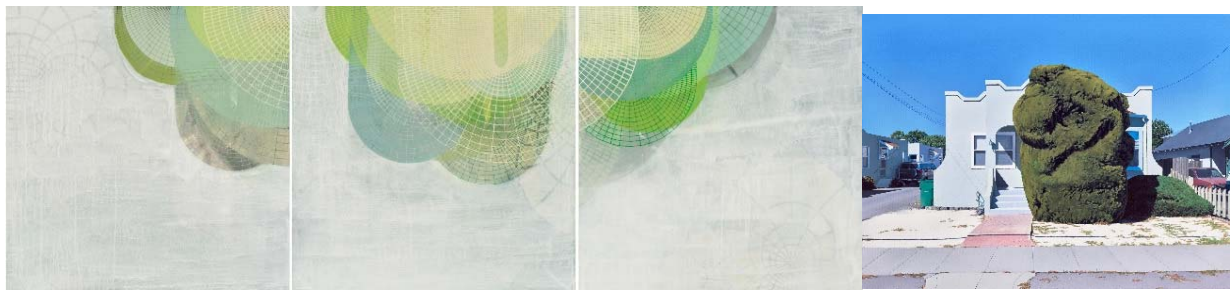
In science, a center of gravity is a point or place where an object can be balanced. The City of Shoreline’s first exhibition devoted to the creation of a permanent collection represented a balance of media and artistic backgrounds in keeping with a 21st century city with rapidly changing demographics. The artwork was on view on the third and fourth floors during business hours and on selected weekends such as Welcoming Week in September.

From over 105 artist submissions and more than 500 artworks, jurors David Francis and Jason Huff (Seattle Arts and Culture) selected a final group of 30 (45 artworks) that explored contemporary art as a balancing of objectives and a blending of disciplinary focus. Many of the artists had backgrounds in other fields and experiences in other countries, reflecting a global village of contemporary art. As Huff wrote in his juror’s statement, “Given the city’s commitment to equity and inclusion, it was important to make sure that the artists whose works are part of this selection reflected diversity of people and communities that make up Shoreline.” Themes varied from nature, to history, identity, and the design of spatial representation.

The City used \$10,000 to purchase six new artworks from the exhibition, expanding the city’s permanent art collection from outdoor public art to encompass paintings and small sculptures. After a 2-week vote by staff and the public, **Megan Reisinger was named “People’s Choice Artist”** for two pieces in the exhibition (The City purchased the smaller of these). In addition to artistic excellence, criteria for the choices included equitable representation among artists. Themes vary from Pop Surrealism to abstraction, with media from acrylic, watercolor and ink, collage, wood, and cardboard mosaic. Funding for the purchases derived from the city’s 1% for Art Ordinance. Future additions to the Portable Works Collection are anticipated every 2 – 3 years as funds become available. Shoreline joins the cities of Kent, Tukwila, Bellevue, Seattle, and others, in creating such collections in King County.

ARTISTS:

Gala Bent, Patti Bowman, Weldon Butler, Minh Carrico, MalPina Chan, Diem Chau, Maura Donegan, Shruti Ghatak, Justin Gibbens, Clare Johnson, Jody Joldersma, Amanda Knowles, BethAnn Lawson, Rich Lehl, Terry Leness, Vikram Madan, Carol Milne, Daphne Minkoff, Naoko Morisawa, Saya Moriyasu, Kemba Opio, Megan Reisinger, Jane Richlovsky, George Rodriguez, Samantha Scherer, Tee Gee Story, Thuy Van Vu. Matthew Whitney, Suze Woolf, Angie Hinojos Yusef.



IMAGES, left to right from row 1: Amanda Knowles, *Untitled (Luck)*, triptych, 2012; Terry Leness, *The Gatekeeper*, 2017; Weldon Butler, *Saddle*, 2005; Minh Carrico, *Father of the Groom*, 2004; Rich Lehl, *The Field Recorder*, 2007; George Rodriguez, *Monkey Prism*, 2018; Carol Milne, *Shimmy*, 2016; Patti Bowman, *Shoreline*, 2018; Megan Reisinger, *Yeti*, 2017; Suze Woolf, *The Last Iceberg*, 2016

Purchases:



Weldon Butler, *Saddle*, dress pattern, fabric, string, ink, paper bag on paper, 2005; Justin Gibbens, *Birds and Bees (Steller's Jays)*, watercolor, gouache, acrylic coffee stains on paper, 2006;



BethAnn Lawson, *Lost at Sea*, acrylic on canvas, 2017; Naoko Morisawa, *Wave Diamond II - Joker*, oil-stained, paper mosaic, acrylic, washi on board, 2016;



Megan Reisinger, *Monkey Beetle*, wood-burning and acrylic on walnut, 2013;
Angie Hinojos Yusuf, *Leaving Aztlan*, carved wood kinetic sculpture, acrylic, 2018.

- Weldon Butler, <http://www.ggibsongallery.com/weldon-butler/>
- Justin Gibbens, <http://www.ggibsongallery.com/artists/justin-gibbens/>
- BethAnn Lawson, <https://www.bethannlawson.com/>
- Naoko Morisawa, <https://www.naokomorisawa.com/>
- Megan Reisinger, (People's Choice Artist), <https://grainfedart.com/>
- Angie Hinojos Yusuf, <https://mutinybaystudios.weebly.com/>