

A photograph of a forest path with tall trees and dense undergrowth. The path is a dirt trail winding through a dense forest of tall, thin trees. The ground is covered in green and brown vegetation, including ferns and other plants. Sunlight filters through the canopy, creating dappled light on the path.

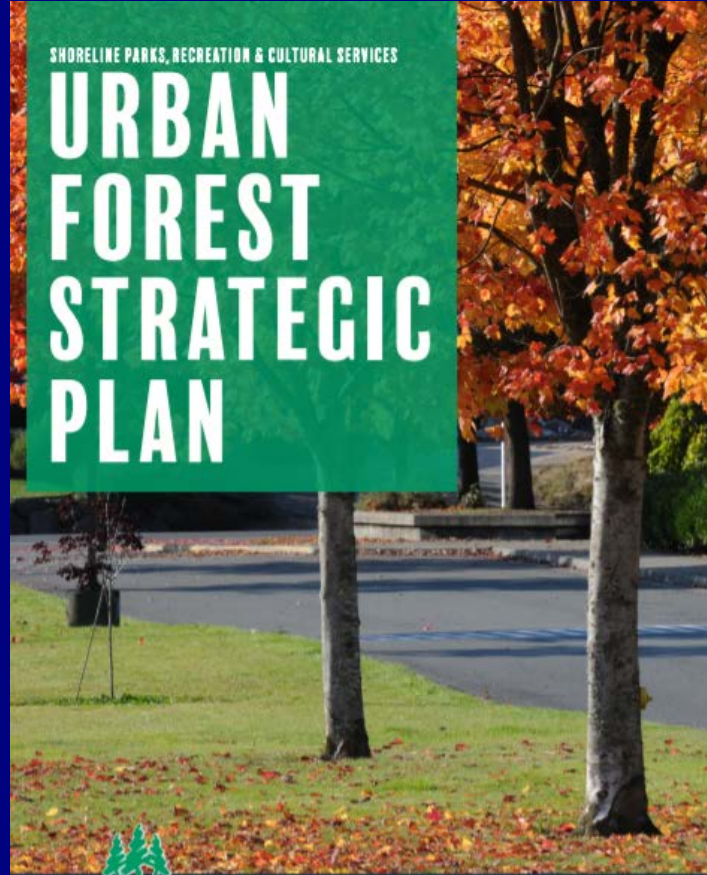
# Urban Tree Canopy Assessment Results

Shoreline City Council

July 23, 2018

SHORELINE PARKS, RECREATION & CULTURAL SERVICES

# URBAN FOREST STRATEGIC PLAN



2014

## URBAN FOREST STRATEGIC PLAN

# mission

Shoreline is dedicated to protect and manage the vibrant urban forest to enhance its benefit to the environment and its contribution to the livability of the community today and for generations to come.

## Urban Forest Strategic Plan 2014

### VISION



**Shoreline's urban forest is a healthy and cohesive ecosystem that is valued and cared for through community stewardship.**



# Urban Forest Strategic Plan 2014

## Key Priorities:

1. Achieve a climate-appropriate degree of tree cover, community-wide
2. Establish a tree population suitable for the urban environment and adapted to the regional environment.
3. Comprehensive inventory of the public tree resource to direct its management.
4. Develop and implement a comprehensive urban forest management plan for public property.
5. Develop and maintain adequate funding to implement a citywide urban forest management plan.
6. Employ and train adequate staff to implement citywide urban forestry plan/program.
7. At the neighborhood level, citizens understand and cooperate in urban forest management.



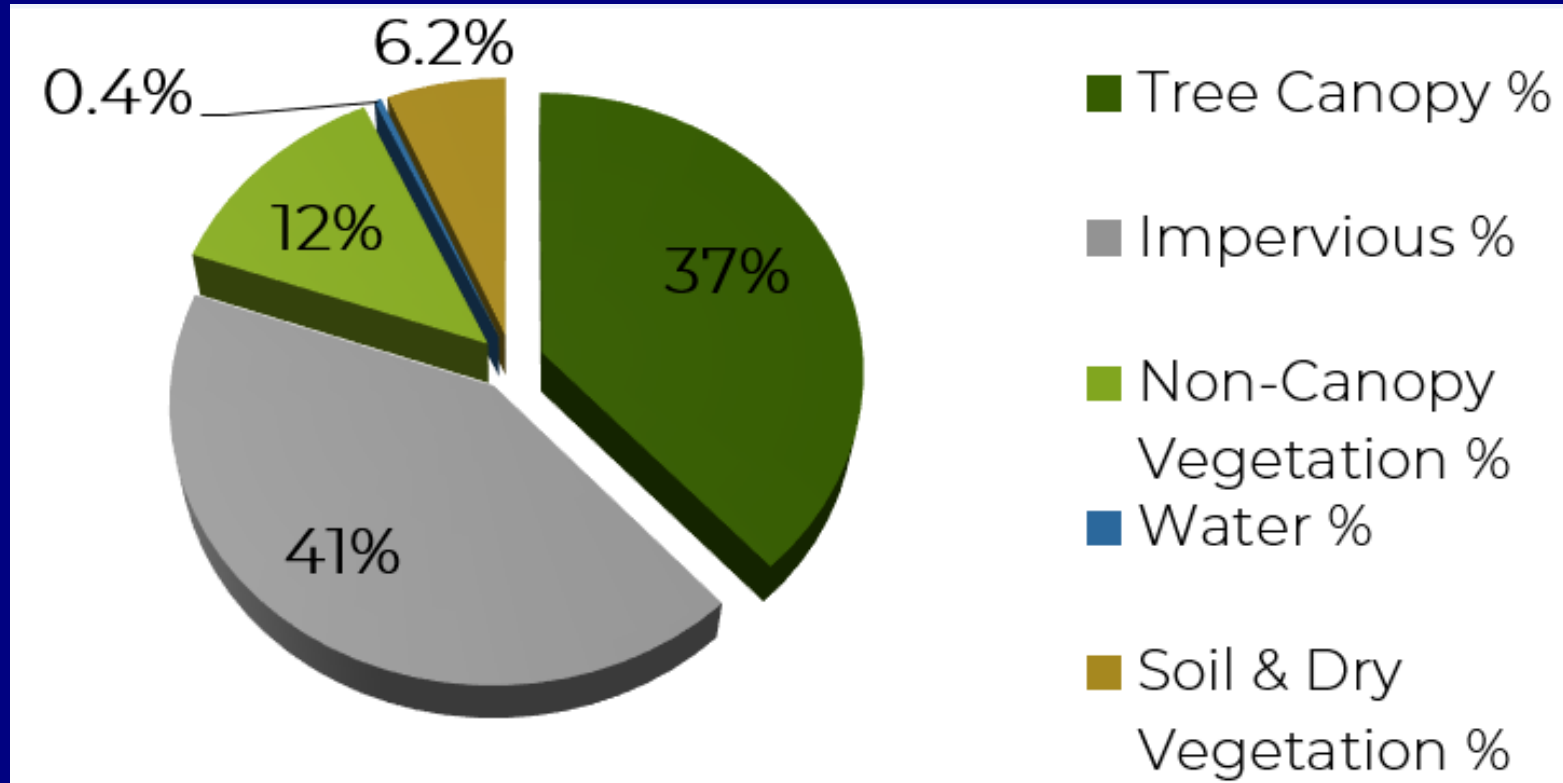
## Priority 1

**Achieve climate-appropriate degree of tree cover, community-wide.**

- a. Currently mapped urban tree cover using satellite imagery and included in city-wide GIS.

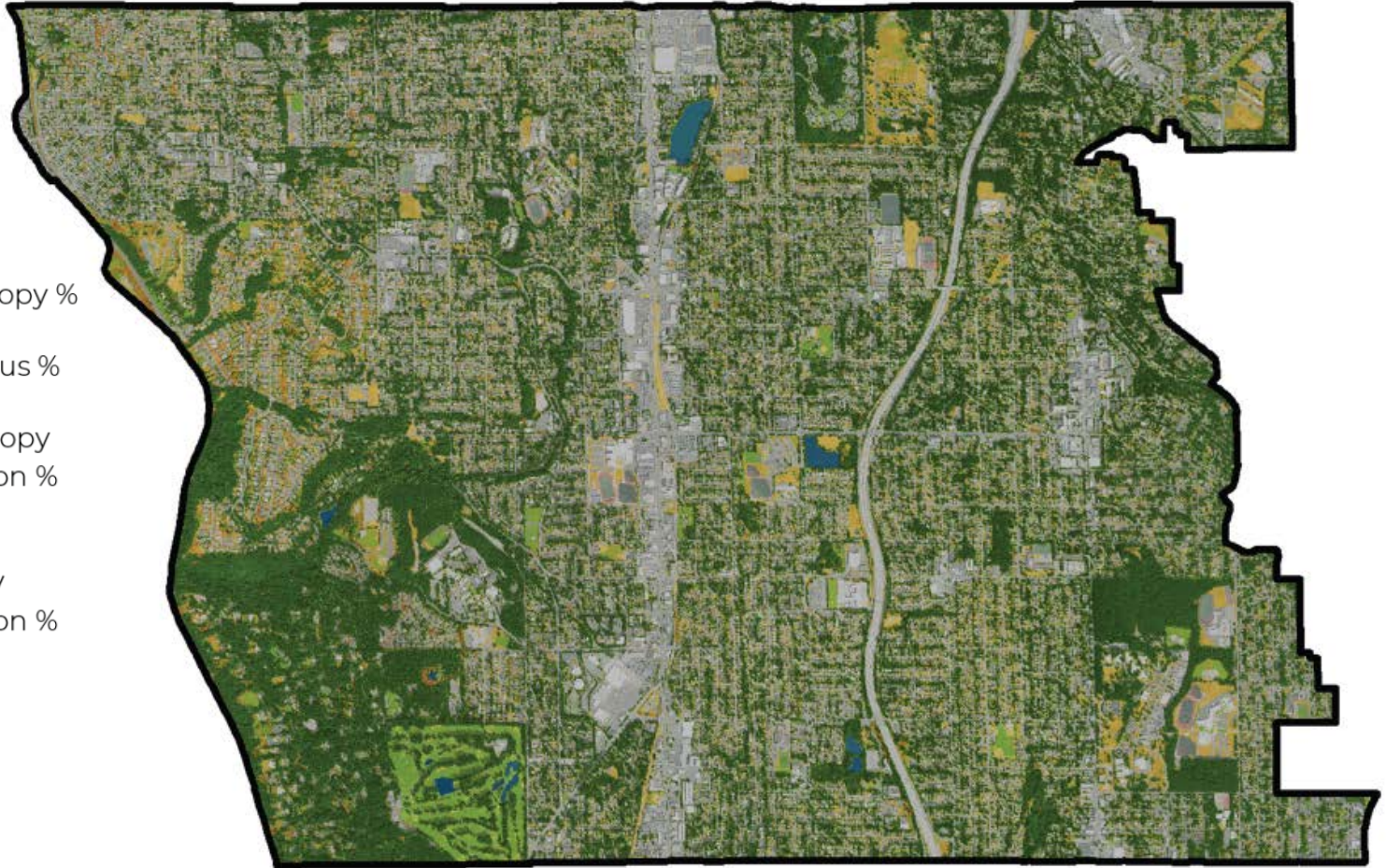
The overall tree cover in Shoreline is estimated at 30.6%, an acceptable level to achieve significant ecosystem benefits.

# 2017 Generalized Land Cover



# 2017 Generalized Land Cover

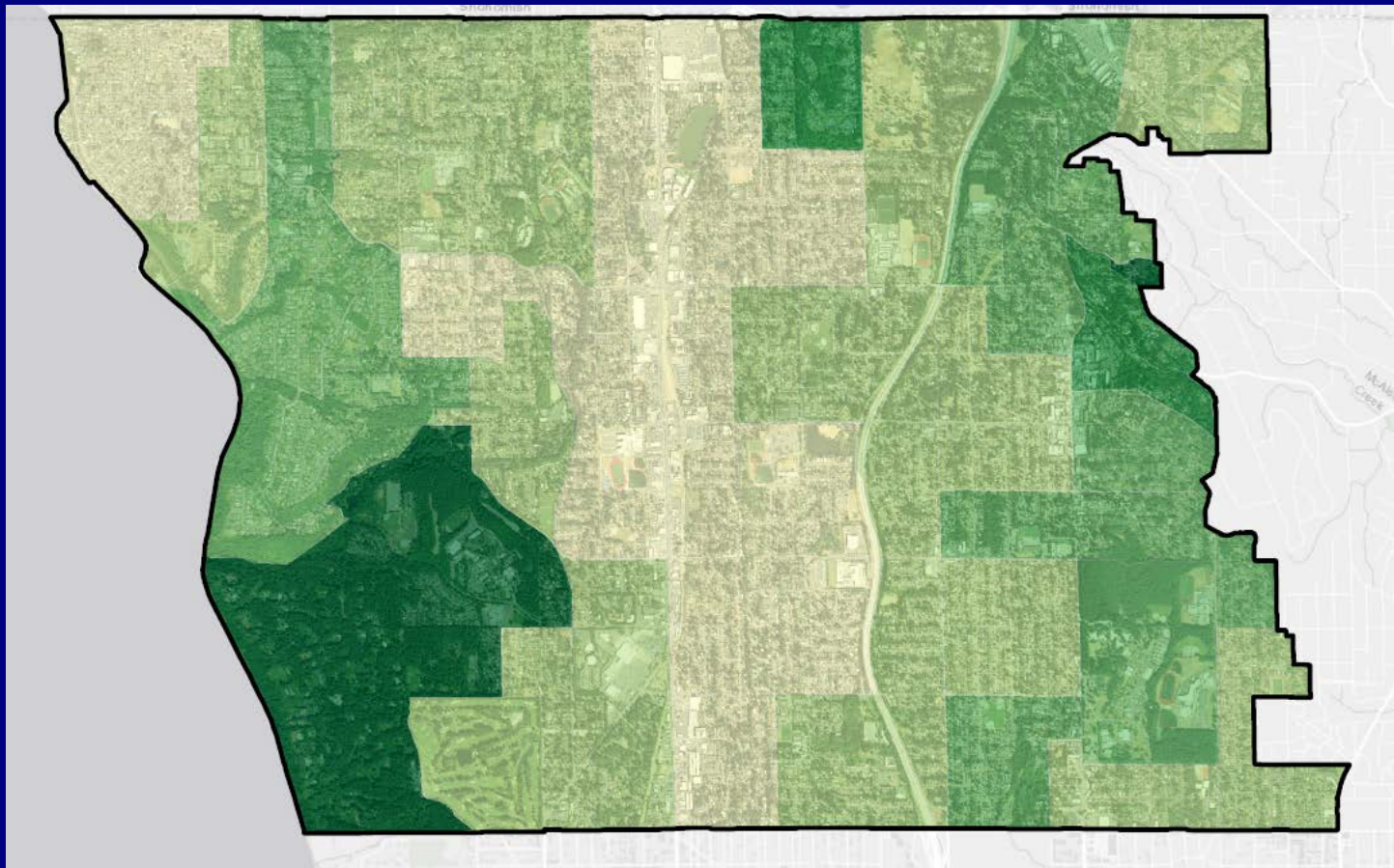
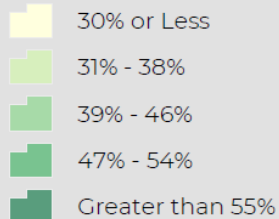
- Tree Canopy %
- Impervious %
- Non-Canopy  
Vegetation %
- Water %
- Soil & Dry  
Vegetation %



# Tree Canopy % by Census Block Group

## Legend

### Urban Tree Canopy %





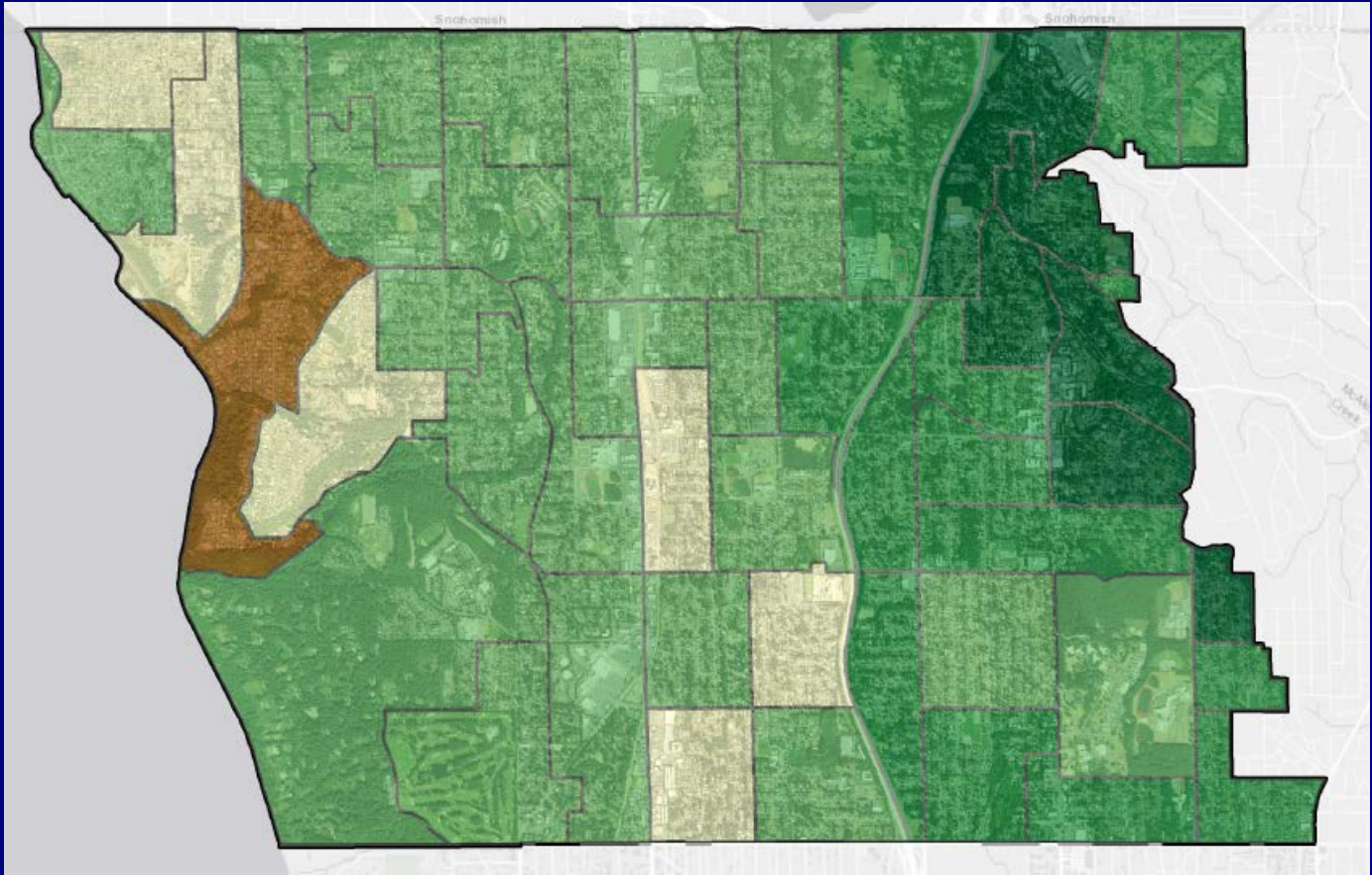
# Land Cover Change 2009-2017

Land coverage	2009		2017		% change 2009-2017
	Acres	%	Acres	%	
<b>Urban Tree Canopy (UTC)</b>	2270	31%	2744	37%	21%
<b>Shrub, grass, water, other</b>	1715	23%	1632	22%	-5%
<b>Impervious Surface</b>	3427	46%	3041	41%	-11%

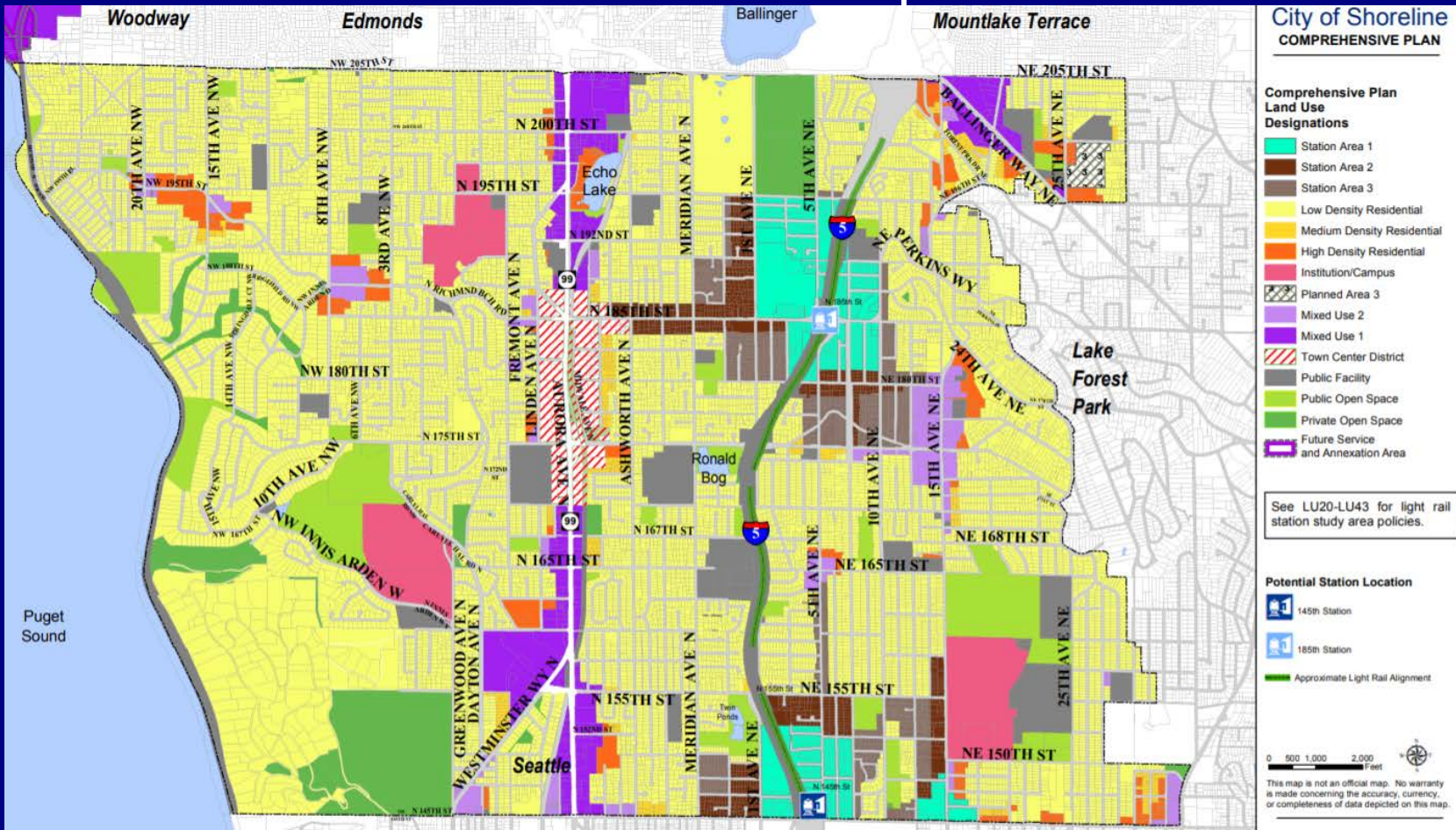
# Legend

## Census Block Groups

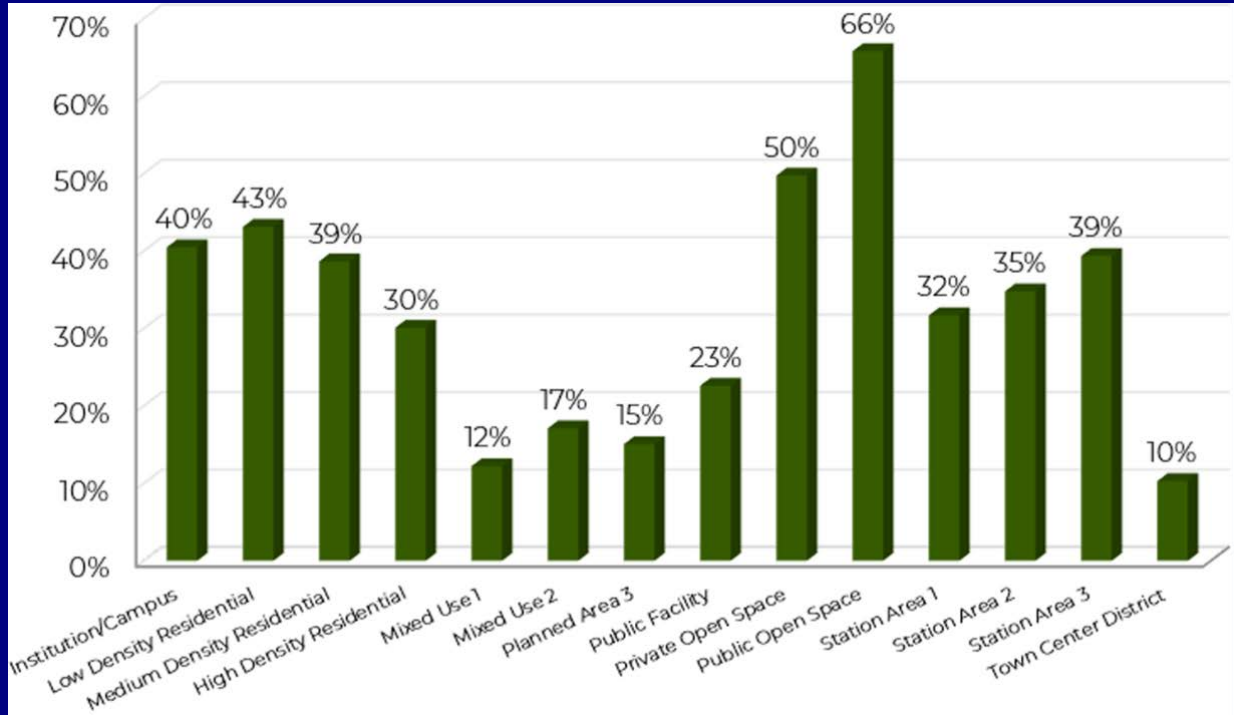
- 0% or Less
- 0.1% - 4.0%
- 4.1% - 8.0%
- 8.1% - 12.0%
- Greater than 12%



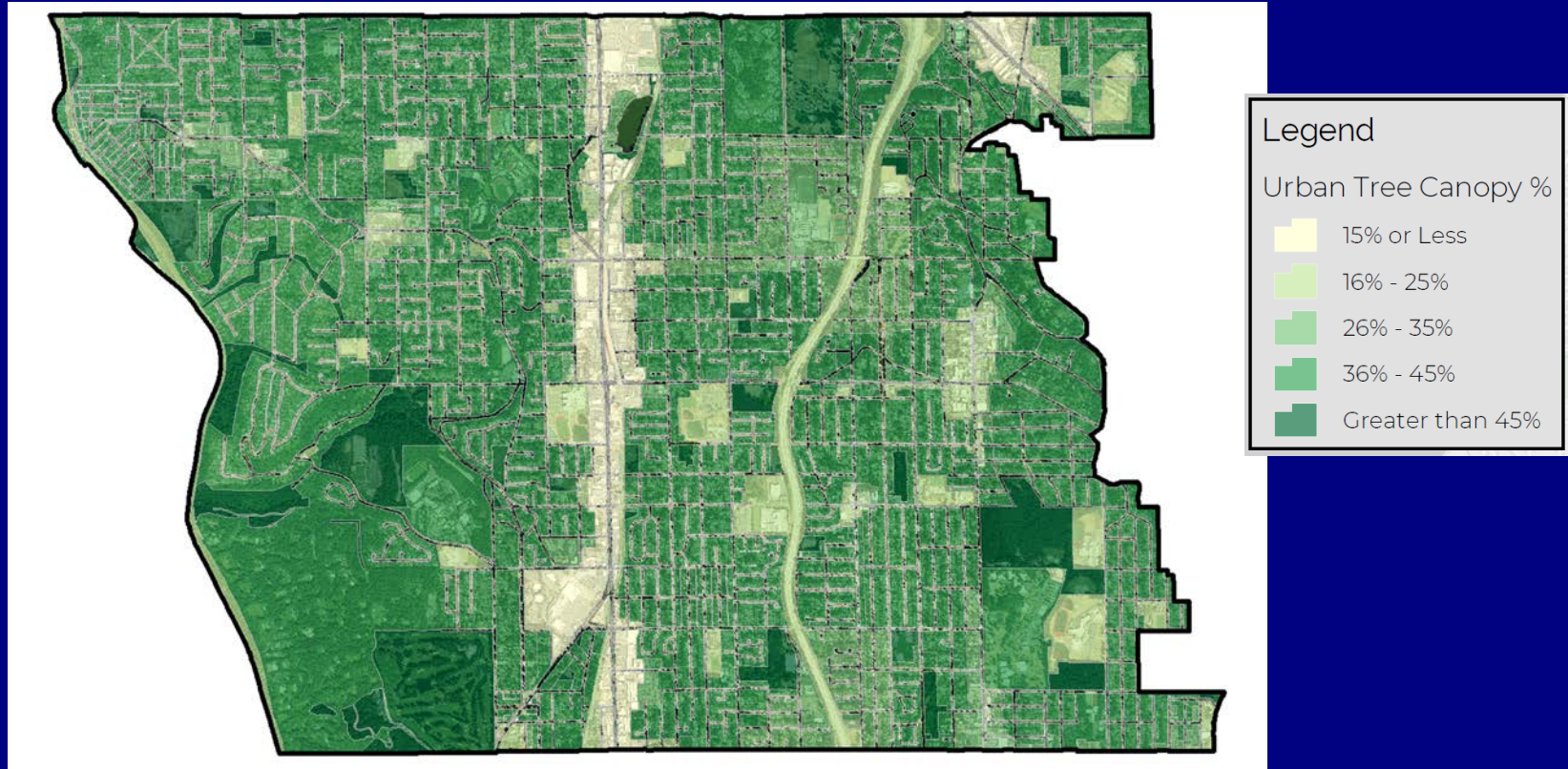
# Land Use Map



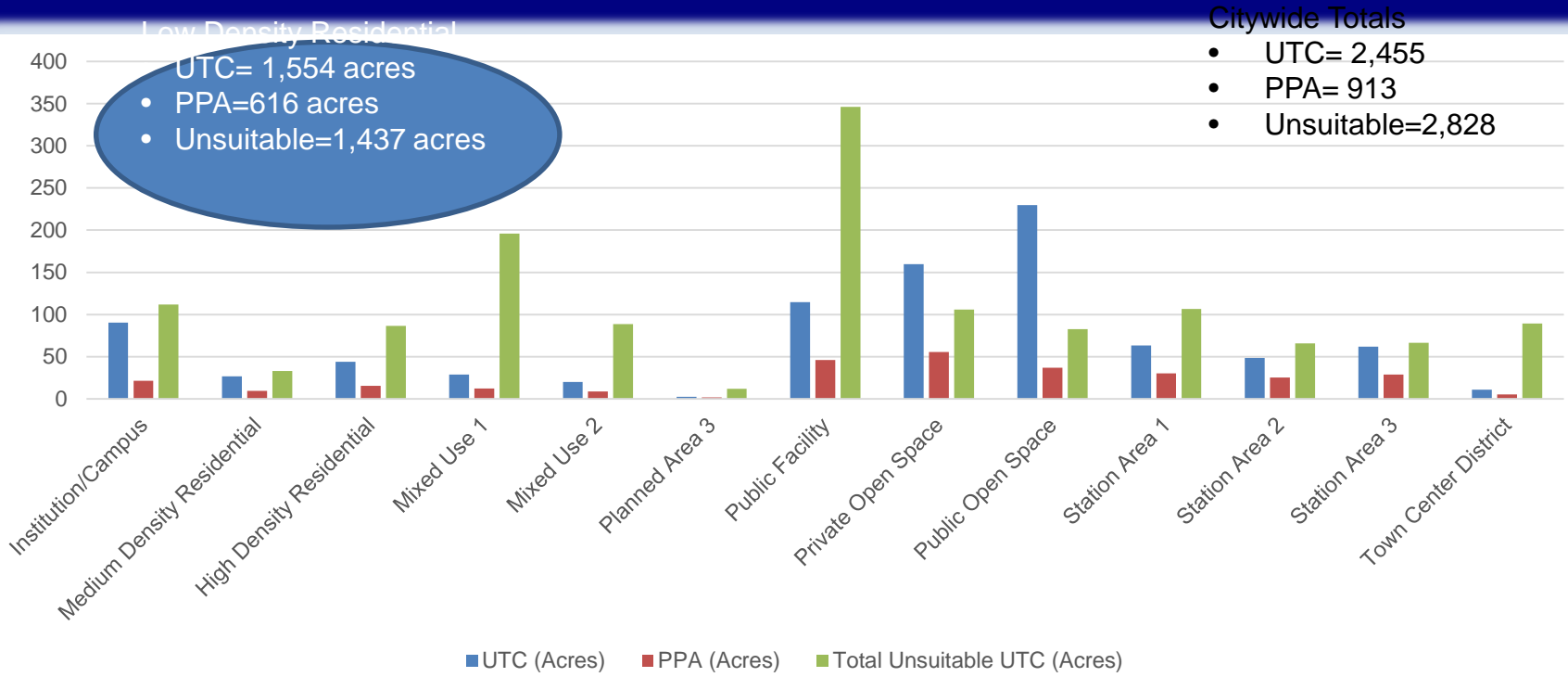
# 2017 UTC by Land Use



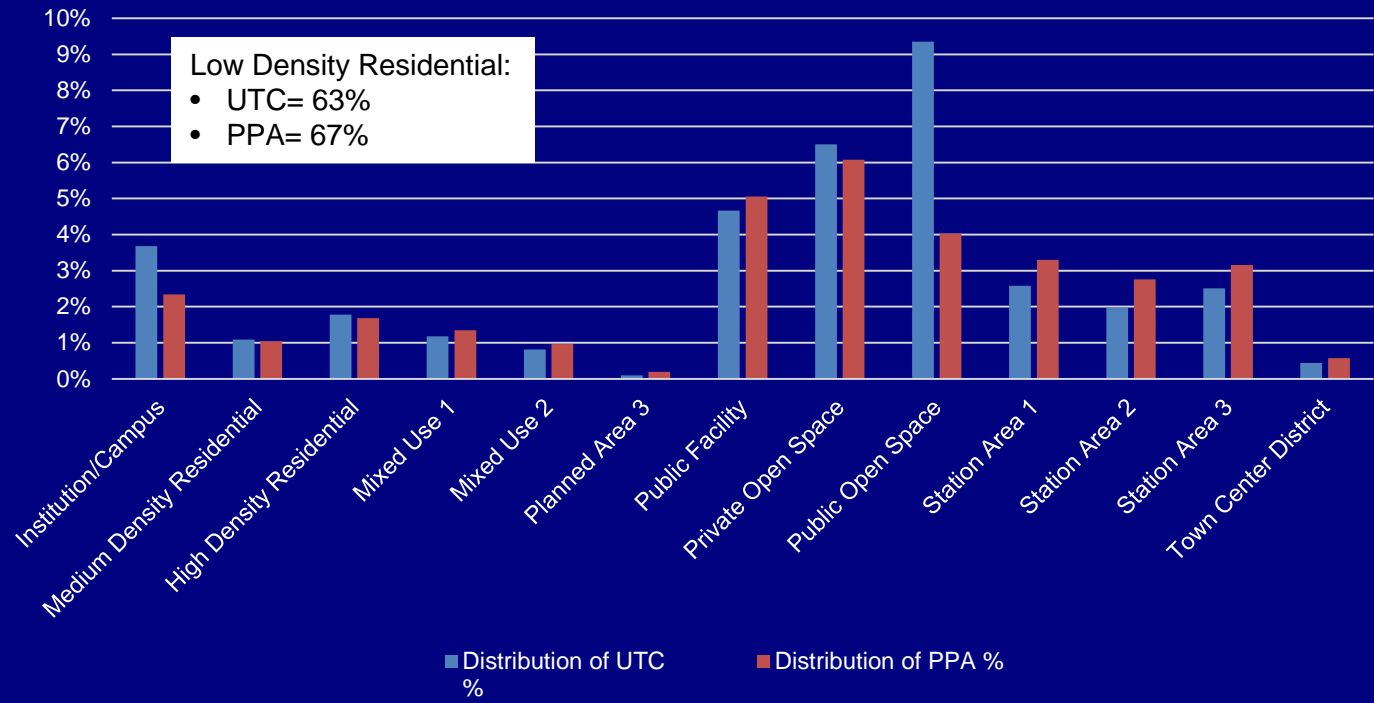
# Urban Tree Canopy % by Land Use

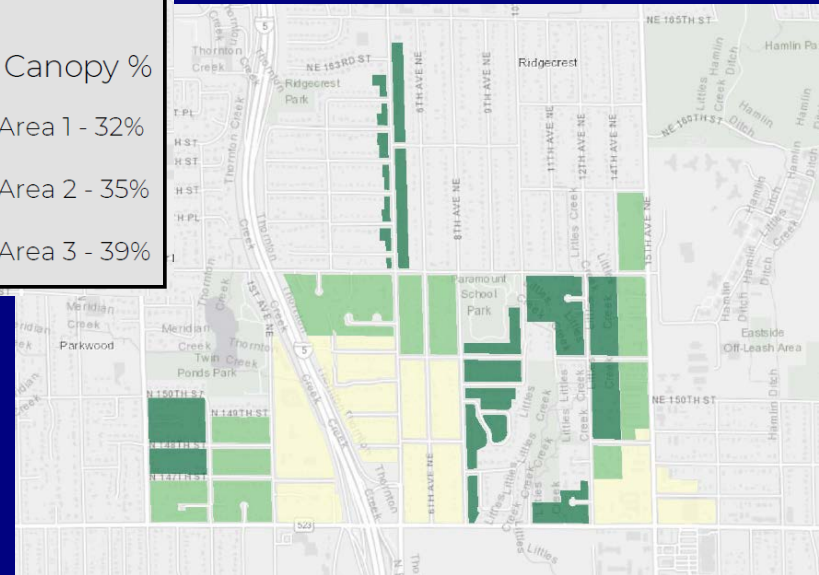
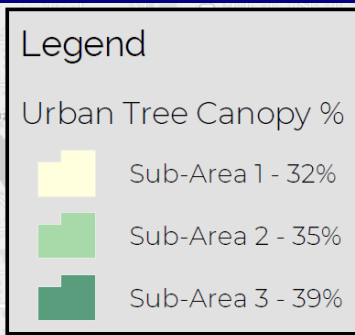
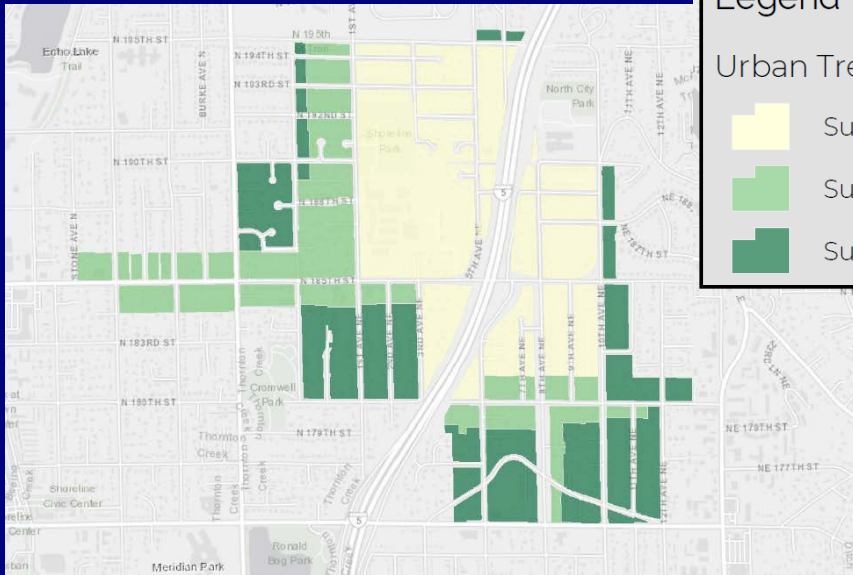


# 2017 Acres of Tree Canopy by Land Use



# Distribution of UTC and PPA by Land Use





185<sup>th</sup> Street Station Area

145<sup>th</sup> Street Station Area

Land Use	Land Area (Acres)	UTC (Acres)	UTC %	Distribution of UTC %	PPA (Acres)	PPA %	Distribution of PPA %
Station Area 1	200	63	32%	3%	30	15%	3%
Station Area 2	139	48	35%	2%	25	18%	3%
Station Area 3	157	62	39%	3%	29	18%	3%
Totals	496	174	35%	7%	84	17%	9%





Net new trees planted in the right-of-way:

2013	2014	2015	2016	2017
362	-61	319	10	81



# Questions?

