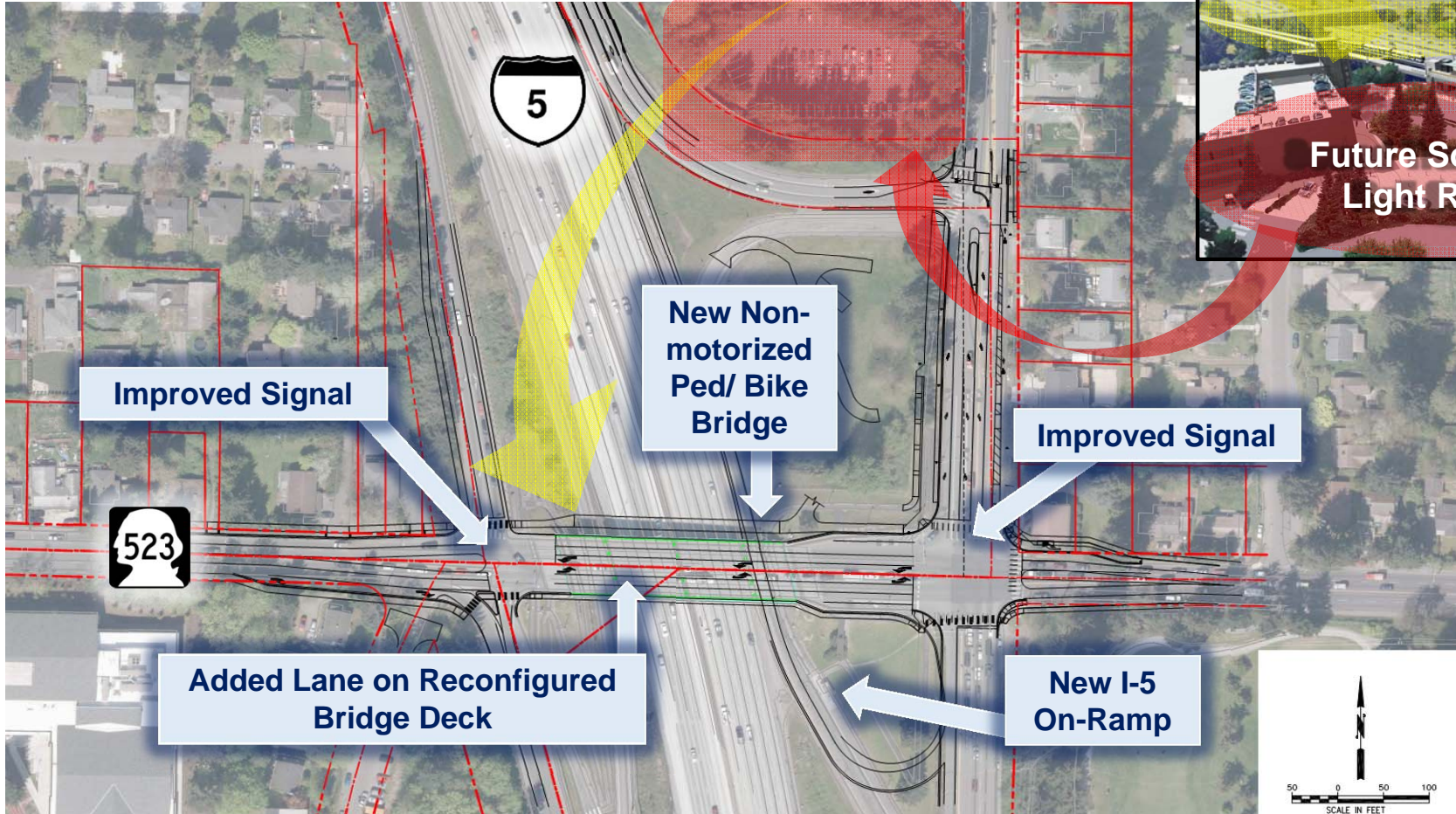




SR 523 (N/NE 145th Street) & I-5 Interchange Improvements (145th Interchange Project)



- *Access to I-5 and Regional Growth Centers.*
 - *Connecting to the 145th Street light rail station.*
- PROJECTIONS:**
- *Connecting a future estimated combined 40,000 daily riders from King County Metro and Sound Transit bus service through this 145th Interchange Project area.*

