

ECONOMIC DEVELOPMENT

“Around our World in 280 Seconds”

APARTMENT BUILDINGS



Paceline

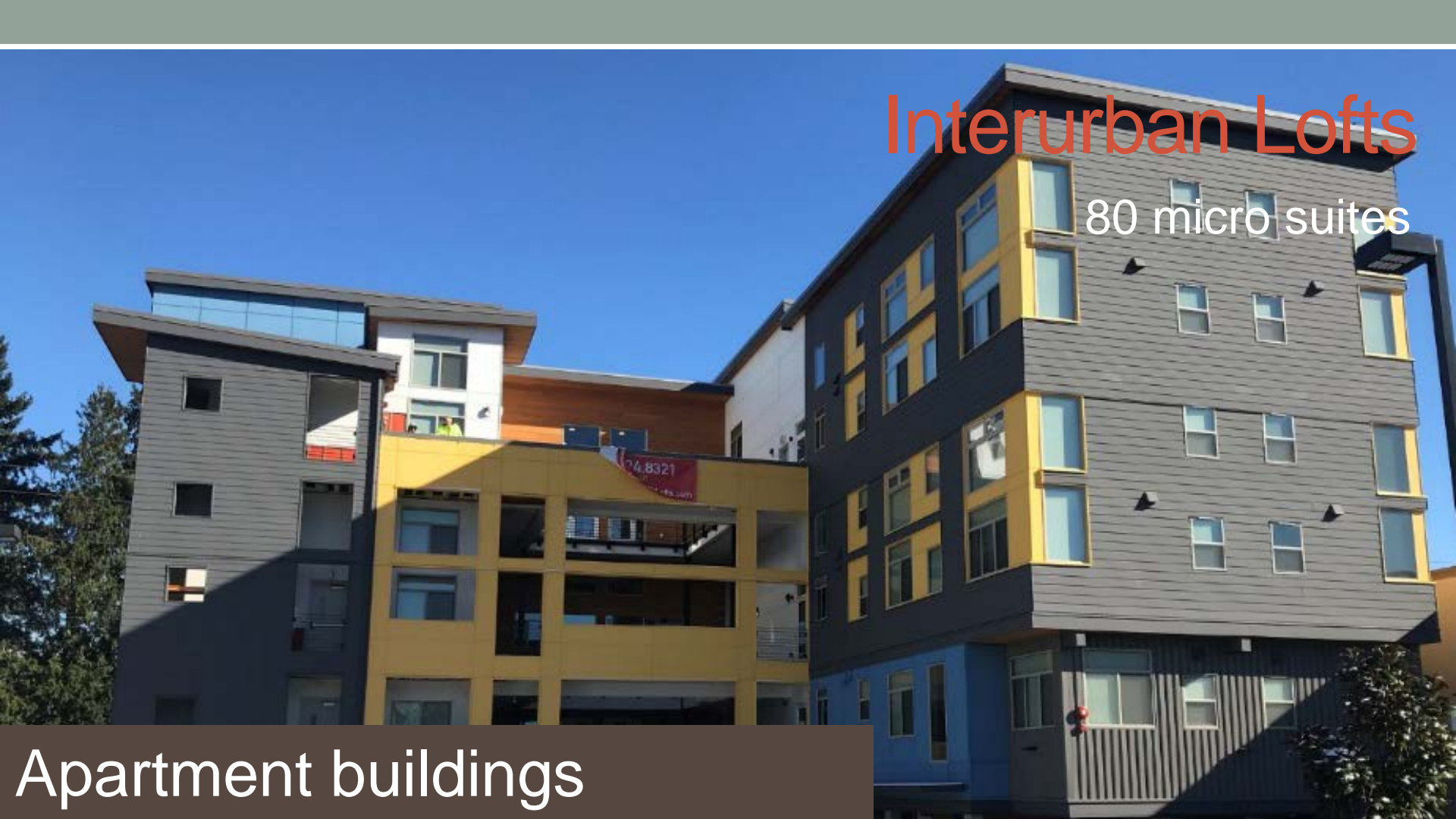
221 units

Apartment buildings

Interurban Lofts

80 micro suites

Apartment buildings



Ronald Commons

60 units



Apartment buildings



CentrepoinTE

195 units

Apartment buildings

High Hill

33 units



Apartment buildings

TH

192nd & Aurora

33 units

Dale Turner Family YMCA

Echo Lake Apartments



BikeLink : Shoreline Park & Ride

Apartment buildings



192nd & Aurora

33 units

Dale Turner Family YMCA

Echo Lake Apartments



BlueLink : Shoreline Park & Ride

Apartment buildings





Ballinger

72 units

Apartment buildings

Sunrise 11

60 units

Apartment buildings



Arabella 2

81 units



Apartment buildings

North City Texaco site

? units



Apartment buildings

Old Post Office site

243 units



Apartment buildings

Old Post Office site

243 units



Apartment buildings



Shoreline

243 units

CREATIVE
NAME

Equipment



Welcome to
Shoreline Apts

17233 15th Avenue NE
Shoreline, WA 98155

All visitors must sign in at
Field Office.

Apartment buildings

An architectural rendering of a modern apartment building. The building features a prominent yellow vertical-slat facade. It has multiple stories with balconies that have dark wood railings. Large glass windows are visible on the ground floor and upper levels. The building is set against a blue sky with light clouds. In the foreground, there are some green plants and a few cars parked on the street. The overall style is a colorful, illustrative architectural drawing.

NE 31st & 145th

16 units

Apartment buildings

An aerial architectural rendering of a large, modern apartment building complex. The building is a long, multi-story structure with a light-colored facade and dark accents around the windows and balconies. It features a flat roof with several rooftop areas. The building is surrounded by a large parking lot with many cars parked. There are trees and landscaped areas around the building and parking lot. In the background, there are more trees and a road.

Alexan

329 units

Apartment buildings



Alexan

329 units

Apartment buildings



Alexan

329 units

JEDI

Apartment buildings

Currently in PTE Program

Units	Project	Type	Affordable	Start	End	Eligible Valuation	Tax Rate	Exemption of City Property Tax
60	Sunrise Eleven	12-year affordable	12	1/1/2018	12/31/2029	12,912,000	1.58415	20,455
80	Interurban Lofts	12-year affordable	16	1/1/2018	12/31/2029	2,444,800	1.58415	3,873
129	Malmö	12-year affordable	26	1/1/2015	12/31/2026	27,932,700	1.58415	44,250
5	North City Development	12-year affordable	1	1/1/2015	12/31/2026	697,100	1.58415	1,104
165	Polaris*	12-year affordable	165	1/1/2015	12/31/2026	see note		
439			220			43,986,600		69,681

Graduates of PTE Program

Units	Project	Type		Start	End	Eligible Valuation	Tax Rate	2017 Revenue
88	Arabella	10-year market	n/a	1/1/2007	12/31/2016	20,812,300	1.58415	32,970
88						20,812,300		32,970

Conditional Certificates of PTE

Units	Project	Type	Affordable	Cert. Date	Expiration	Status	Est. Completion	Final App
330	Alexan at Shoreline Place	12-year affordable	66	-	-	Application	Late 2020	no
81	Arabella 2	12-year affordable	17	Feb-18	Feb-21	Construction	Late 2019	no
243	Shoreline Develoment	12-year affordable	49	Feb-18	Feb-21	Construction	Late 2019	no
163	Centerpointe	12-year affordable	33	1/4/2017	1/4/2020	Demolition	Early 2020	no
221	Paceline	12-year affordable	44	1/31/2018	1/31/2021	Construction	Mid 2018	no
72	205 Apartments	12-year affordable	14	12/28/2016	12/28/2019	Construction	Mid 2018	no
1,110			223					

1,637 Total homes

443 Affordable homes

TOWNHOMES



N 185th & Densmore

5 homes

Townhomes

N 185th & Further Down

8 homes

Townhomes



153rd & 15th Ave NE

5 homes

Townhomes



11th & N 199th St

6 homes



Townhomes

Others in process

- 7 @ 1540 NE 175th
- 7 @ 18344 Stone Ave N
- 5 @ 14709 32nd Ave NE
- 12 @ 18524 Wallingford Ave N
- 5 @ 15604 5th Ave NE
- 3 @ 224 NE 180th St
- 5 @ 15425 2nd Ave N
- 5 @ 18311 11th Ave NE
- 6 @ 14604 Corliss Ave N
- 22 @ 1857 N 185th St
- 84 @ 2355 N 147th St

COMMERCIAL

Aurora Village

205th & Aurora

Commercial



Parkwood Plaza

152nd & Aurora



Commercial

Parkwood Plaza

152nd & Aurora

Commercial



Shoreline Place

155th & Aurora



Commercial

BEFORE

Fred Meyer

185th & Aurora



Commercial

AFTER

Fred Meyer

185th & Aurora



Commercial

Ballinger Self-storage

20029 19th Ave NE

BALLINGER
HEATED STORAGE

Commercial

West Coast Self-storage

145th & Bothell Way

Commercial

West Coast Self-storage

165th & Aurora



Commercial

Across the Street Self-storage

170th & Aurora Ave N

Commercial



Up the Street Self-storage

192nd & Aurora



Commercial

Unifac Self-storage

192nd & Aurora

NEON

Commercial



Monka Brewery

173rd & 15th Ave NE

Opening JUNE 13th!

Commercial

SCHOOL PROJECTS

Parkwood Elementary



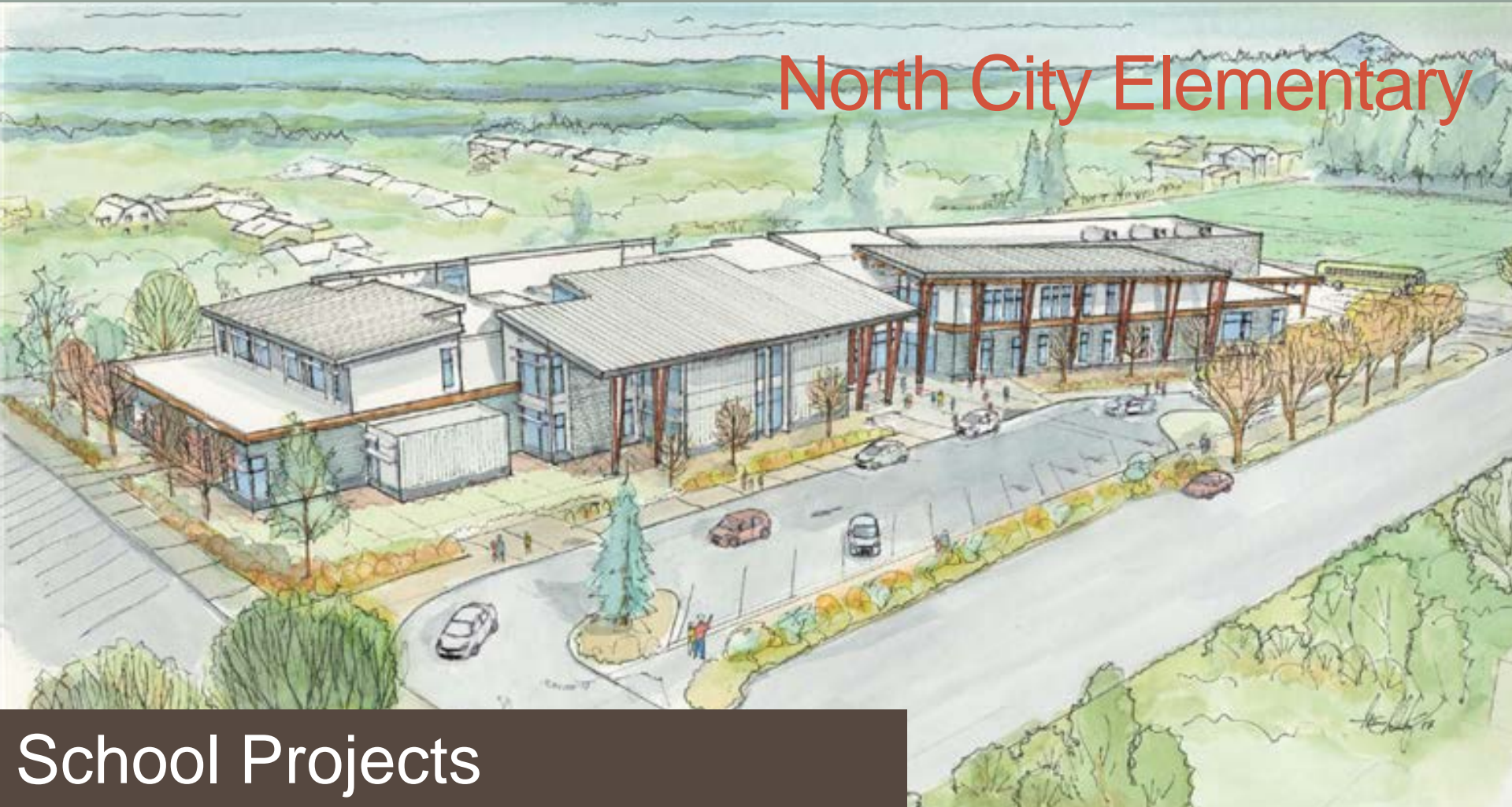
School Projects

Aldercrest Elementary

An architectural rendering of Aldercrest Elementary school. The building is a modern, multi-story structure with a mix of materials including stone, wood, and light-colored panels. It features large windows and a prominent entrance area with a covered walkway supported by wooden columns. The school is surrounded by a parking lot with several cars and a yellow school bus. The landscape is landscaped with various trees, including evergreens and deciduous trees with autumn foliage. In the background, there are rolling green hills and a blue sky with light clouds. The overall style is a detailed watercolor or pencil sketch.

School Projects

North City Elementary



School Projects

Early Learning Center

SHORELINE EARLY LEARNING CENTER



School Projects

Einstein Middle School

A photograph of Einstein Middle School. The school is a single-story building with a blue roof and brown brick walls. In the foreground, there is a large green tree on the left and a smaller sign that reads "EINSTEIN MIDDLE SCHOOL". To the left of the sign is a red stop sign. The sky is overcast.

School Projects

Kellogg Middle School

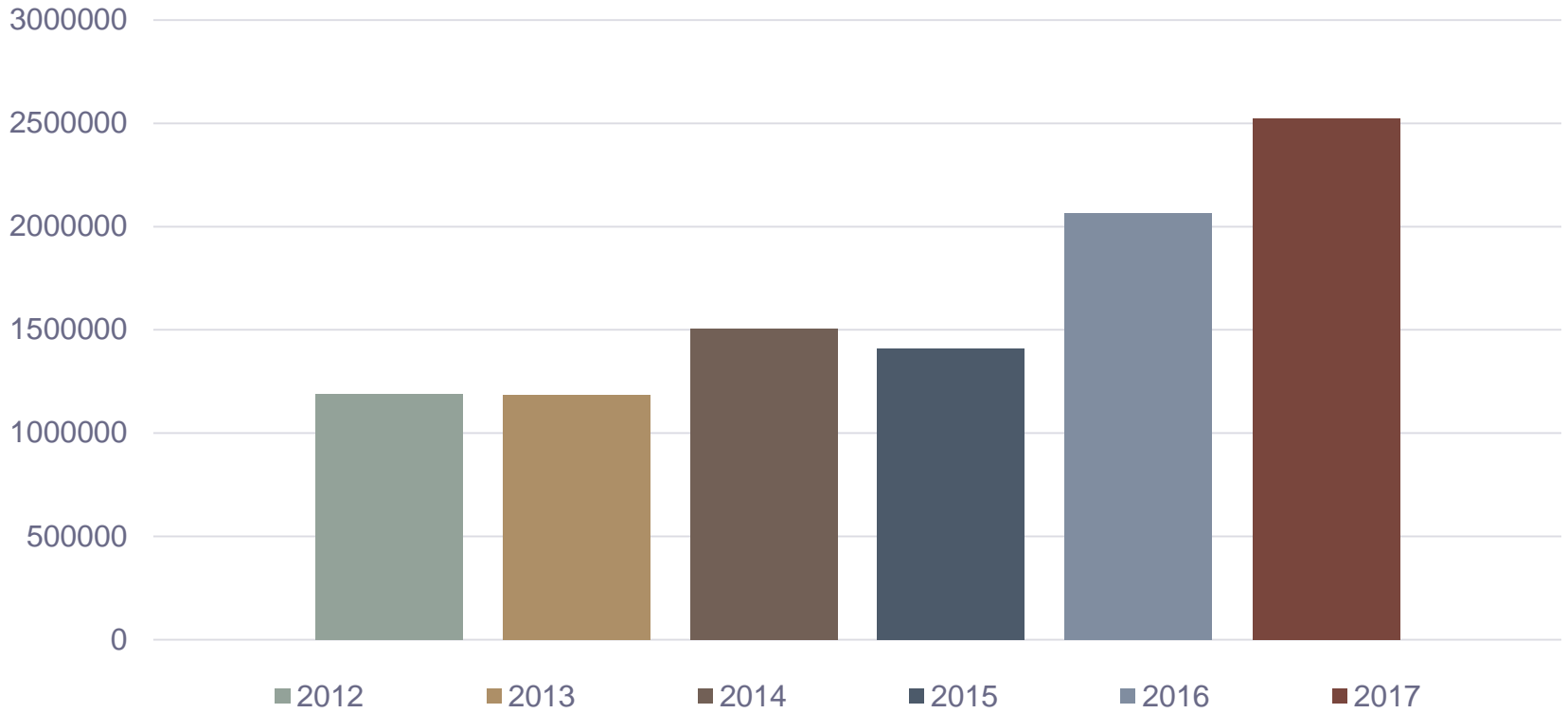
The image shows the exterior of Kellogg Middle School. The building is a two-story structure with a combination of light-colored stucco and red brick. A prominent feature is a covered entrance on the left side, supported by several white columns. To the left of the building, an American flag flies on a tall pole. The sky is overcast, and there are trees and bushes in the background. In the foreground, there is a paved area with blue-painted lines, possibly for a playground or sports court. A small blue sign is visible on the right side of the building.

School Projects

Shoreline Community College Dorm



School Projects



Permit Revenue

8 YEARS TO REMEMBER

Thank you for the opportunity to serve