

# 2018 Surface Water Small Project

Near 15537 11<sup>th</sup> Ave NE (Work Order #11824)  
Infiltration Trench



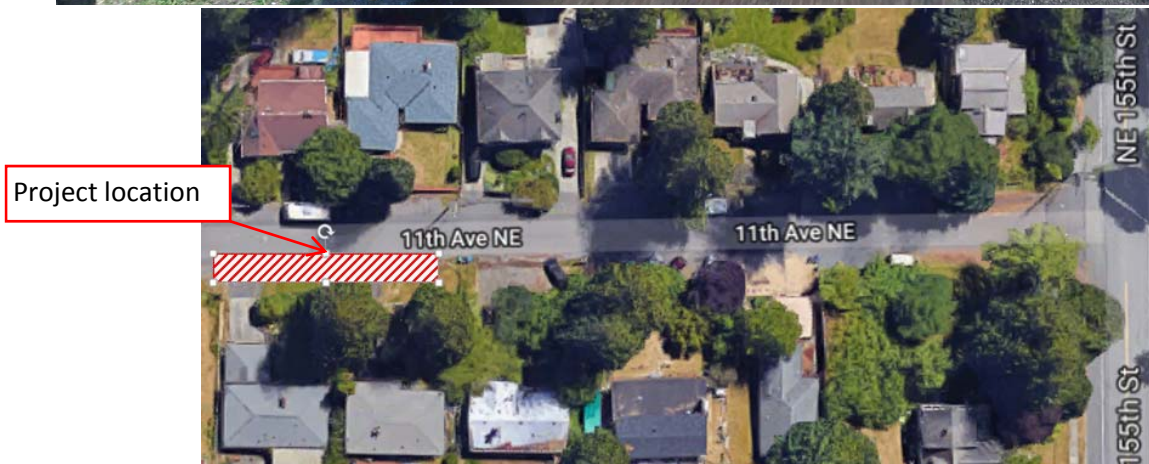
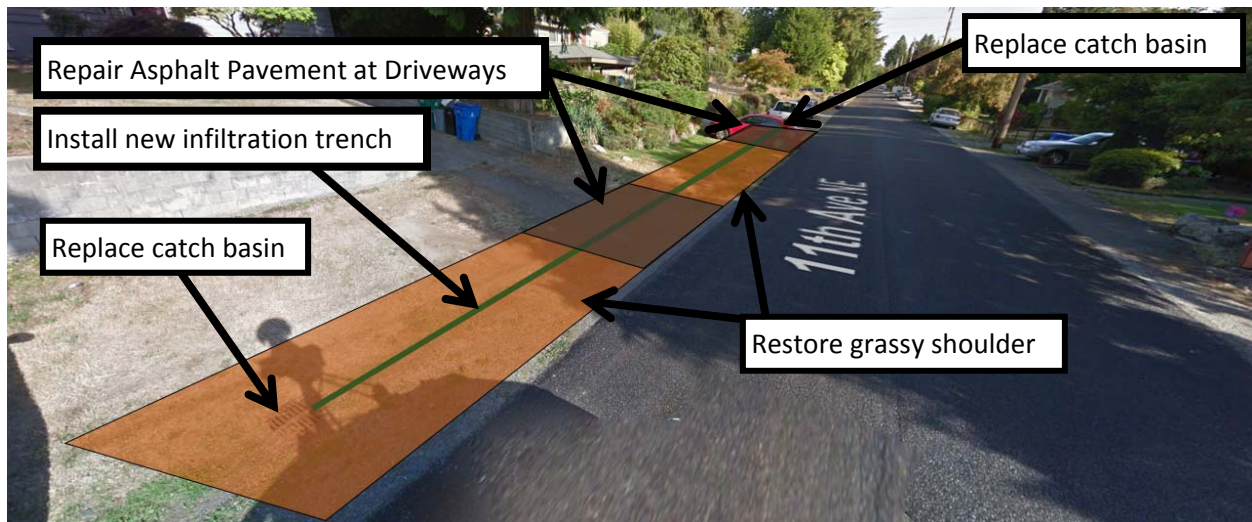
## Drainage improvements are coming to your street!

This project will make stormwater system improvements on the west side of 11<sup>th</sup> Avenue NE, near the property at 15537. Improvements will use infiltration to reduce flows to Little's Creek.

### Project Improvements:

The stormwater system on 11<sup>th</sup> Avenue NE mid-block between N 155<sup>th</sup> and N 158<sup>th</sup> Streets drains to Little's Creek. This connection uses a problematic pipe crossing private property at 15532. This project will reduce demand on this pipe and overall stormwater impacts to Little's Creek. An underground infiltration trench will be installed to allow stormwater to soak into the ground. The infiltration trench will replace a 100 foot section of existing stormwater pipe. This work will be done along the shoulder on the west side of 11<sup>th</sup> Avenue NE in front of 15533 and 15537. Existing catch basins at both ends of the new infiltration trench will be replaced with new catch basins. Upon completion, the shoulder will be restored with new asphalt pavement at driveways and grass seeding to match the existing condition in other areas.

The conceptual sketch below shows the proposed work on 11<sup>th</sup> Avenue NE (looking north).



VICINITY MAP



2018 Surface Water Small Project  
Near 15537 11<sup>th</sup> Ave NE (Work Order #11824)  
Infiltration Trench



**During Construction:**

Peak construction activities should be limited to just a few days. The overall duration of construction activities may be spread out over a few weeks. Temporary construction impacts may include but are not limited to:

- Short-term unavailability of some on-street parking within or near the work area.
- Temporary loss of two-way travel on 11<sup>th</sup> Avenue NE during active construction.
  - Local access will be maintained at all times; travel lane impacts will be limited to between 7am and 6pm on weekdays. The duration of such impacts is not expected to be more than a few days.
- Temporary loss of driveway access (only for driveways within or near the work area). Residents will be notified in advance of any construction activity blocking a driveway. We will work with residents to minimize disruptions from driveway access issues.
- Disturbances to landscaping, signage, and paving within the right-of-way

**Following Construction:**

- General condition of construction site will be clean and restored to match pre-construction conditions, or better.
- Asphalt pavement will be neatly patched, as needed.
- Landscaped areas will be restored. Areas seeded for grass may not grow until later in the fall. Interim measures to prevent erosion and soil loss may be installed.

The City will respond to any questions, complaints, requests, or concerns as soon as possible.

**Construction is scheduled for mid- to late-summer 2018; notice will be sent to confirm dates once known. Project website (listed below) will be updated as the project advances.**

**NOW is the time to ask questions or provide comments regarding this work.**

**Please reference Work Order #11824.**

**Please contact Project Manager Lea Bonebrake at:**

**[LBonebrake@shorelinewa.gov](mailto:LBonebrake@shorelinewa.gov) - or - (206) 801-2475**

**Project Website:**

**<http://www.shorelinewa.gov/government/projects-initiatives/surface-water-small-drainage-projects>**