



SAC MEETING #7 BREAK OUT GROUP QUESTIONS

February 8, 2018

Existing Sidewalk Prioritization

- To help with the Accessibility Demand Rating (ADR), where are there known routes for disabled users? Mark on map, if helpful.

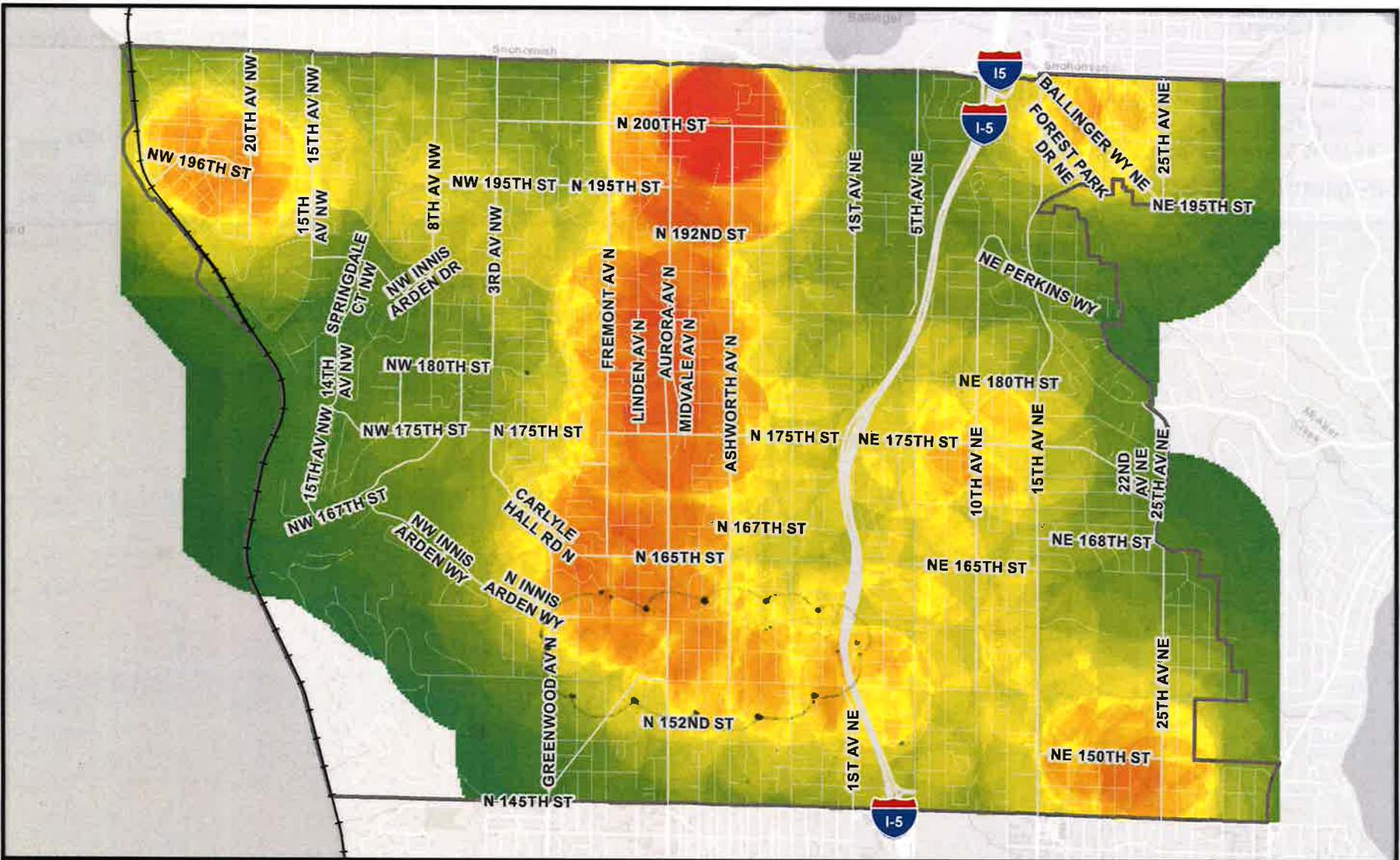
- Do you have suggestions or feedback on the Breakdown of the Barrier Condition Rating (BCR)?

- Does the methodology for prioritization of existing sidewalks make sense? Do you have any concerns with the approach?

- Do you have any feedback on the three sample sites? Mark on map, if helpful.

SIDEWALKS - SUMMARY	
GROUP F - MOST SIGNIFICANT BARRIERS (UNPASSABLE)	SCORE = 500
Average width of sidewalk is less than 3 ft	
Constrained width is less than 30"	
Obstruction type - Utility Pole (within PAR)	
Obstruction type - Sign Post (within PAR)	
Obstruction type - Tree Roots (within PAR)	
Obstruction type - Missing/Damaged Panel (within PAR)	
GROUP E - ALL ELEMENTS NON-COMPLIANT	SCORE = 400
N/A	
GROUP D - SIGNIFICANT BARRIERS (PASSABLE, BUT DIFFICULT)	SCORE = 300
Is sidewalk grade 5% or less? (if NO)	
Sidewalk cross slope is 3.0% or greater	
Overhead obstruction height above walk is less than 80"	
Obstruction type - Other (within PAR)	
Grade breaks are flush (if NO)	
Discontinuity is greater than 1/2-inch	
Horizontal openings are less than 1/2" (if NO)	
Horizontal openings are perpendicular to travel (if NO)	
GROUP C - MODERATE BARRIERS (PASSABLE, BUT MODERATELY DIFFICULT)	SCORE = 200
Average width of sidewalk is 3' to 4'	
Constrained width is 30" to 36"	
Is utility lid slip resistant?	
Obstruction type - Vegetation (within PAR)	
Discontinuity is between 1/4-inch and 1/2-inch	
Surface is firm, stable, and slip resistant (if NO)	
GROUP B - LOW BARRIERS (PASSABLE, BUT LEAST DIFFICULT)	SCORE = 100
Sidewalk cross slope is 2.1% to 2.4%	
Sidewalk cross slope is 2.5% to 2.9%	
Constrained width is 36" to 48"	
If sidewalk is less than 5 ft wide - Is there a passing space (5 ft x 5 ft) every 200 ft?	
GROUP A - COMPLIANT ELEMENTS	
Sidewalk cross slope is 2.0% or less	
Average width of sidewalk is 4.1 ft to 4.4 ft	
Average width of sidewalk is 4.5 ft to 4.9 ft	
Average width of sidewalk is 5.0 ft to 5.9 ft	
Average width of sidewalk is 6.0 ft to 6.9 ft	
Average width of sidewalk is 7.0 ft to 7.9 ft	
Average width of sidewalk is 8.0 ft or greater	
Constrained width is 48" or greater	
Overhead obstruction height above walk is 80" or greater	
Obstruction within access route (if NO)	
Discontinuity is 1/4-inch or less	
GROUP I - INFORMATION-ONLY ELEMENTS	
Pedestrian route type - Sidewalk	
Pedestrian route type - Designated Shoulder	
Pedestrian route type - Other (see comments)	
Is sidewalk grade equal to or less than adjacent road grade? (if NO)	
Sidewalk has overhead obstruction (if YES)	
Utility lid in sidewalk	
Vertical surface discontinuity present (if YES)	
If discontinuity is between 1/4-inch and 1/2-inch, is it sloped 50% or less?	
Horizontal openings present (if YES)	

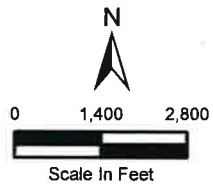
SIDEWALKS - SUMMARY
Needs follow-up?



Heat Map
 High : 11.05
 Low : 0.15

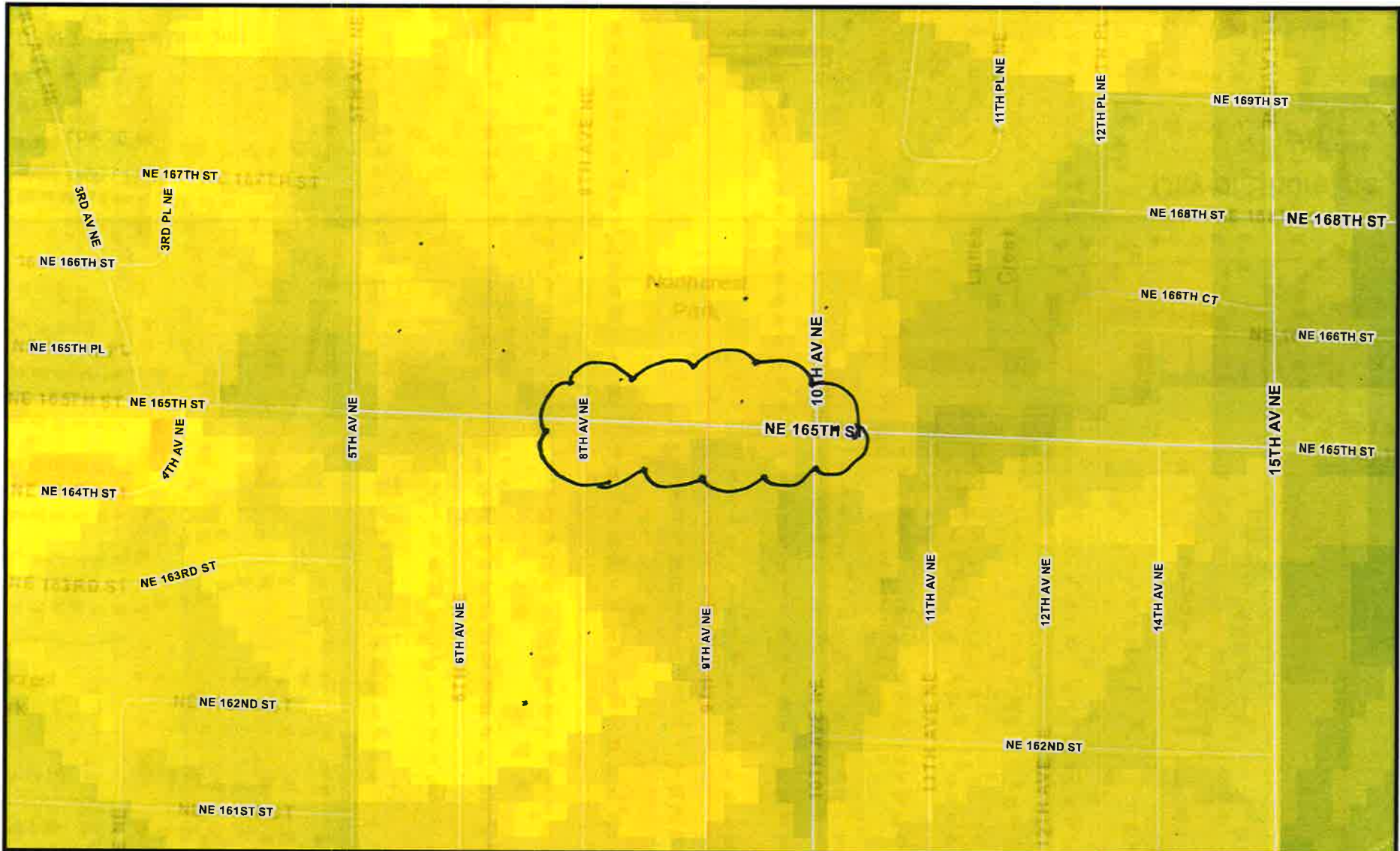
City of Shoreline
 Overview

DRAFT



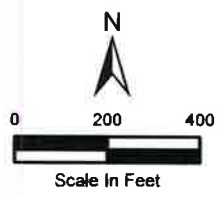
DRAFT - Internal Use Only





Heat Map
 High : 11.05
 Low : 0.15

DRAFT - Internal Use Only

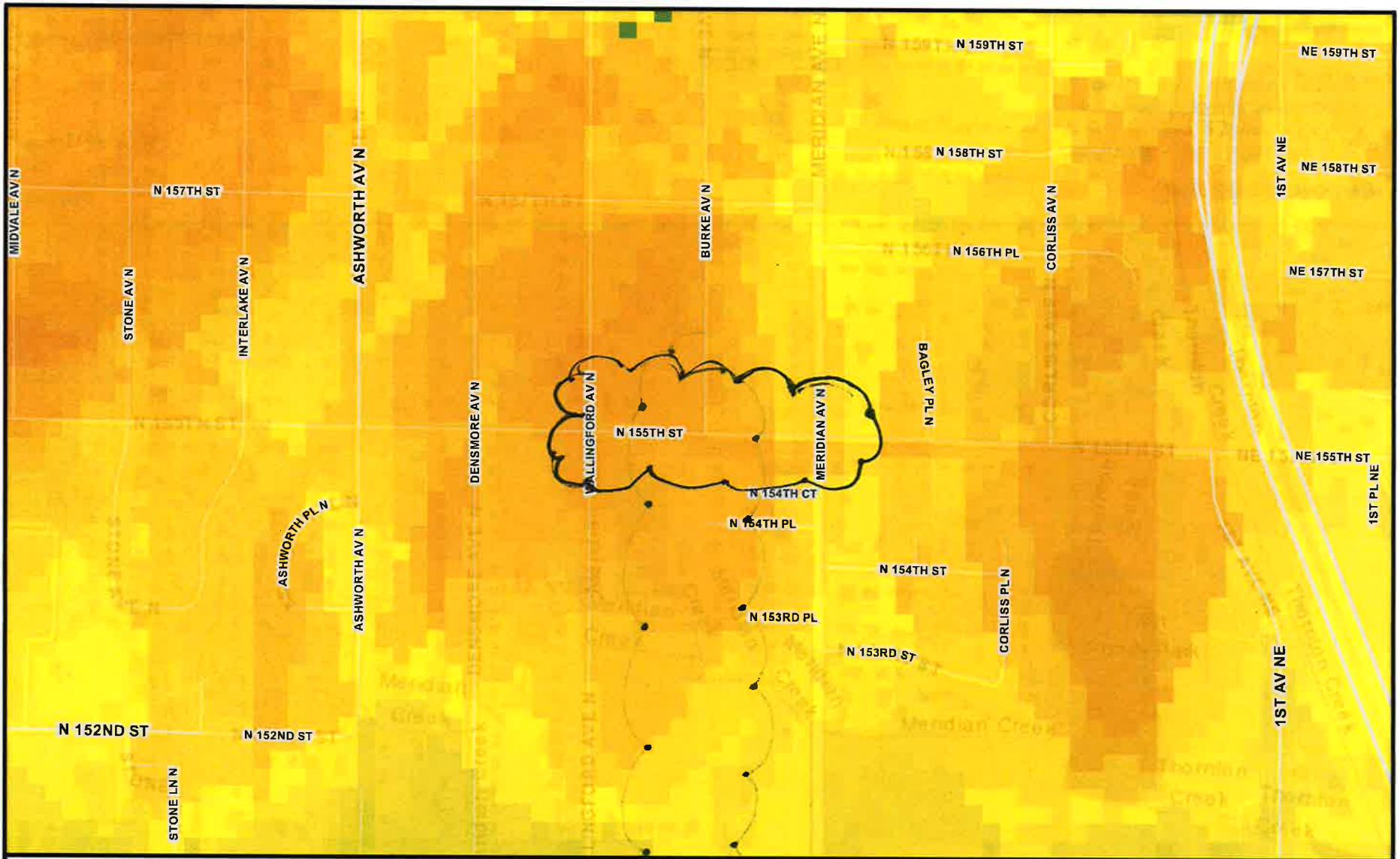


DRAFT

City of Shoreline

NE 165th- 8th Ave NE to 10th Ave NE – serves an elementary school - disabled user has issues on this segment



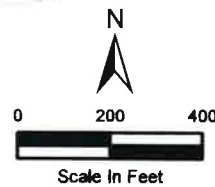


Heat Map
 High : 11.05
 Low : 0.15

City of Shoreline

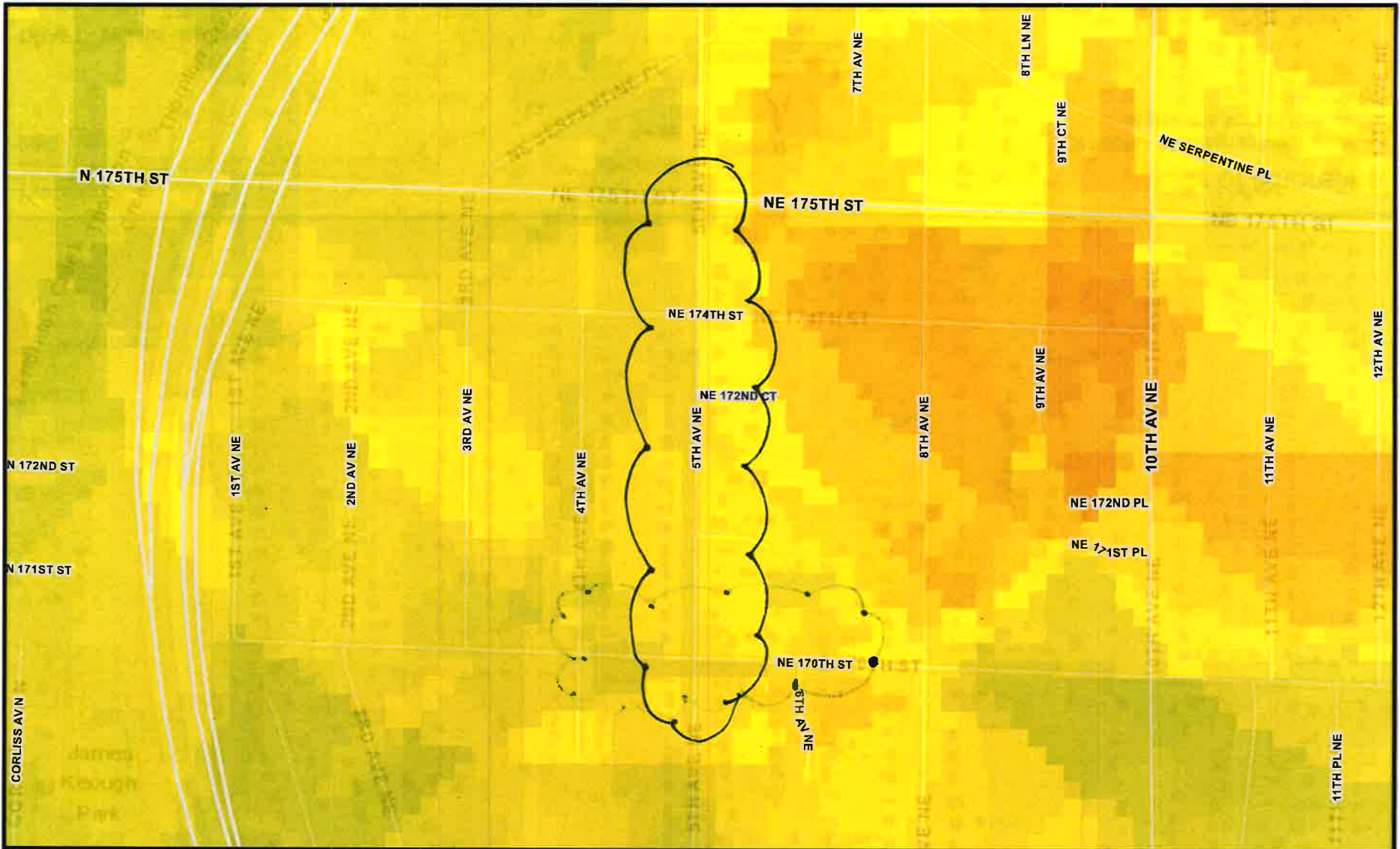
N 155th – Meridian to Wallingford –
 segment in front of Parkwood
 elementary

DRAFT



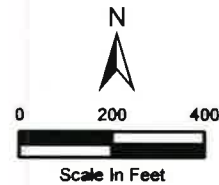
DRAFT - Internal Use Only





Heat Map
 High : 11.05
 Low : 0.15

DRAFT - Internal Use Only



DRAFT

City of Shoreline

5th Ave NE - NE 170th to NE 175th
 - this segment got a lot of
 community feedback on needing to
 be repaired - it's on a bus route,



