



CURRENTS

News from the City of Shoreline Volume 19 No. 9

November 2017

2018 Proposed Budget recommends new Police K9 unit

ON OCTOBER 9, City Manager Debbie Tarry presented her Proposed 2018 Budget to the City Council. "The Proposed Budget aligns with the City's 10-Year Financial Sustainability Plan, maintains current services and service levels for the community, and addresses high priority action items identified to achieve Council's goals," noted Tarry.

The proposed budget of \$79.9 million includes the operating, capital, and utilities budgets. Overall, the total represents a 14% decrease from the 2017 budget. The decrease is primarily the result of working on fewer capital projects in 2018.

The Budget plays a critical role in achieving the community's vision and achieving Council's goals. During its planning work each year Council reviews comments from the community to update its goals and then identifies the steps needed to achieve those goals.

In support of Council Goal 5 (Promote and enhance the City's safe community and neighborhood programs and initiatives), Tarry recommends hiring a K9 Deputy and police dog (K9 unit). Currently, when Shoreline Police need a K9 unit for tracking a suspect, building searches, or narcotics detection, they call for a King County Sheriff's Office (KCSO) K9 unit. There is usually a significant delay in the response from a KCSO K9 unit as they are typically responding from precincts in Burien or Maple Valley. The longer the response time, the more difficult it is to contain the scene and make an arrest. The addition of a K9 unit will increase the number of sworn officers from 49 to 50 and bring us closer to our goal of one officer per 1,000 residents. We have not added a new police position since 2007.

Over the past year and a half, we have been updating the Surface Water Utility Master Plan. A key objective of the Master Plan is to identify improvements that will help the Utility meet levels of service that reflect the expectations of customers and that are appropriately in line with utility rates. This requires a clear understanding of customers' needs, expectations, and preferences. Through public outreach, we devised a Proactive Management Strategy that will address customer needs and expectations over the next five years.

As part of that strategy, we will be adding three staff positions with the Utility to manage projects and programs that will enhance service levels to meet customer expectations.

Additional budget information on Page 5



Neighborhood Spotlight: North City Page 4



Pedestrian Plan Page 6



Shoreline CityWise Project Page 7

CONTACT YOUR Shoreline City Council



MAYOR CHRIS ROBERTS
(206) 801-2205
croberts@shorelinewa.gov



**DEPUTY MAYOR
SHARI WINSTEAD**
(206) 801-2201
swinstead@shorelinewa.gov



WILL HALL
(206) 801-2207
whall@shorelinewa.gov



DORIS McCONNELL
(206) 801-2204
dmcconnell@shorelinewa.gov



KEITH McGLASHAN
(206) 801-2203
kmcglashan@shorelinewa.gov



JESSE SALOMON
(206) 801-2202
jsalomon@shorelinewa.gov



KEITH SCULLY
(206) 801-2206
kscully@shorelinewa.gov

CONTACT ALL COUNCILMEMBERS:
(206) 801-2213
council@shorelinewa.gov

CITY COUNCIL MEETINGS:
Mondays at 7:00 p.m.
Shoreline City Hall, Council Chamber
Agendas: shorelinewa.gov/councilmeetings

Lynwood Link Extension Light Rail update

SOUND TRANSIT originally planned to start light rail service through Shoreline at the end of 2023. It now estimates that service will begin mid-2024. A six-month extension of the schedule is needed so Sound Transit can identify cost savings to offset higher than expected real estate expenses and rising construction cost estimates. Sound Transit is seeking feedback from jurisdictions along the alignment, including Shoreline, on cost-savings ideas.

One cost-saving idea under review is moving the parking garage from the west side of I-5 to the east side, where the Shoreline North/185th station is located. This idea, along with others under discussion, is still in the design feasibility stage. Over the next few months, Sound Transit will continue working with City staff on further refining cost-saving ideas. If the City and Sound Transit come to agreement on a feasible site layout for the relocation of the 185th Street Station garage, Sound Transit will seek additional input from the community to advance this design change (as well as any others ultimately

MORE INFORMATION

For more information on the light rail permitting process and City review:

City Light Rail Review Team
(206) 801-2525
lightrail@shorelinewa.gov
shorelinewa.gov/lichtrailpermits

For more information about the project and possible changes:

Sound Transit Community Outreach
(206) 398-5300
lynnwoodlink@soundtransit.org
soundtransit.org/LLE
twitter.com/soundtransit
facebook.com/SoundTransit

selected by the Sound Transit Board). Sound Transit expects to have a better idea about the feasibility of its cost-saving measures by the end of the year.

The 90% level of design will be completed in 2018, permitting should be done by the end of 2018 with construction to begin in late 2018/early 2019.

Ronald Wastewater Utility customer service now at City Hall

REMINDER: City now operates wastewater utility for Ronald Wastewater District

UNDER THE TERMS of a service contract between Ronald Wastewater District and the City, the City now operates the wastewater (sewer) utility. The District's Board of Commissioners continue to be responsible for addressing policy matters, setting rates, and managing capital improvements for the utility. The City is responsible for operating and maintaining the utility; issuing permits; addressing customer service concerns; and collecting payment. To learn more, visit shorelinewa.gov/wastewater.

Ronald Wastewater Bill Payments

NO CHANGE: Online bill payment, paperless billing, automatic withdrawal, mailed payments

NOW AT CITY HALL: In person payments, after hours drop box (located on top floor of City Hall parking garage)



Council awards prizes to Kids Move Challenge winners

Kids Move Challenge winners

OVER THE SUMMER, we challenged Shoreline’s kids to exercise at least 60 minutes a day for 30 days as part of Shoreline’s Healthy City campaign. Kids were encouraged to play games, run, walk, hike, walk their dogs, skip, swim, or do any activity that kept them moving. Kids that tracked their activities and sent in their tracking forms were entered to win a prize. This year’s prizes were Razor scooters with helmets and pads.

A big congratulations to our 2017 winners: Zachary Binz (9), Esme Mirabueno (5), and Ayden Baerd (3).

The Shoreline City Council encourages all Shoreline kids to keep moving through the fall and winter. For some fun ideas, check out the City’s Recreation Guide at shorelinewa.gov/recreation.

North City Post Office Update

THE NORTH CITY POST OFFICE’S lease at its current facility (17233 15th Avenue NE) will end on December 31, 2017. The United States Postal Service (USPS) is looking for another location in the area to accommodate both its carrier and retail services, which require approximately 18,200 sq. feet of building space. If USPS is unable to find sufficient space, it may look for separate facilities for its retail and carrier services.

USPS is committed to looking for location solutions to meet the needs of the Shoreline community. Given the challenges of finding an alternative location, USPS may take interim steps to continue service until a long-term solution is found.

Deputy Mayor Winstead Farewell Reception

AFTER SERVING EIGHT YEARS on the Shoreline City Council, Deputy Mayor Shari Winstead will be saying goodbye at the end of the year. Shoreline voters first elected Winstead to the Council in 2009 and reelected her in 2013. She served as Mayor from 2014 to 2016 and Deputy Mayor from 2016 to now. Come say goodbye to Deputy Mayor Winstead at a reception on Monday, December 11 at 6:00 p.m. in the lobby of City Hall.

Comprehensive Plan amendment suggestions due by Dec. 1, 2017

EVERY YEAR, the City goes through a Comprehensive Plan amendment process. It is an opportunity for you to propose changes to Shoreline’s Comprehensive Plan. People usually suggest amendments that address changing conditions or new issues in the community.

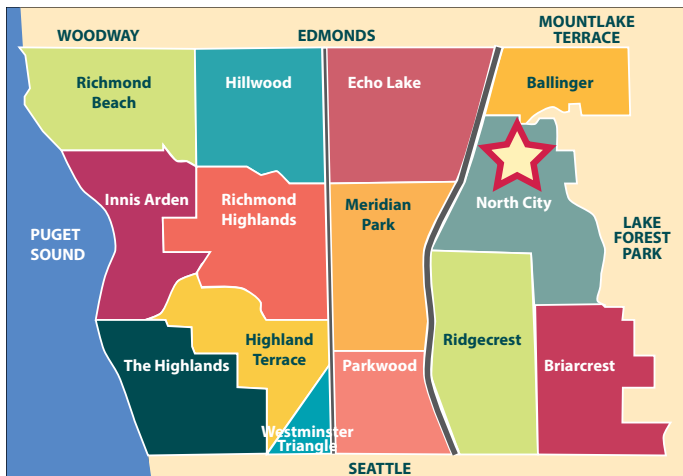
If you would like to suggest an amendment, fill out an application and send it to the Planning and Community Development Department (P&CD). Application materials are on the Permits and Development Information page on the City’s website. You must submit your application by 5:00 p.m. December 1, 2017 for Council to consider it.

Send applications to: Senior Planner Steven Szafran, Planning & Community Development, 17500 Midvale Avenue N, Shoreline, WA 98133.

You can also email completed applications to sszafran@shorelinewa.gov.

Council will review all submitted amendments and develop a list for staff to study in early 2018. For more information, visit shorelinewa.gov or contact Steven Szafran at (206) 801-2512 or sszafran@shorelinewa.gov.

NEIGHBORHOOD SPOTLIGHT



Courtesy Shoreline Historical Museum

North City Neighborhood

A CENTURY AGO, as new roads brought residents and businesses to surrounding areas, what we now know as North City remained a rugged outpost. The hardy people who heeded the call of the north must have preferred the fleeting peace of undeveloped land over the amenities of adjacent communities.

By 1926, change crept up from the increasingly residential Lake Forest Park. Promotions for Monte Vista, a new plat opened by the North Seattle Improvement Company, called people to claim their own little piece of America. Lago Vista, a second development started a year later, made the area even more appealing. Developers became active members of the growing community, opening a grocery store, buying homes, and donating land for a club house. As more residences were built, businesses sprang up on 15th Avenue NE. It was paved in 1930. Today's North City Tavern was originally a gas station and grocery built during that era of expansion.

By 1946, the area between Monte Vista and Lago Vista had become a thriving small town business district, in need of its own identity. A naming contest yielded the moniker of North City, and business leaders jumped on the opportunity to develop a far north, Alaskan theme. The North King County Fair, dubbed Sourdough Days, included a rodeo where St. Mark's Church now stands, and a saloon for patrons costumed in gold rush era clothing. An annual Alaska-themed float became a regular part of Seattle Seafair celebrations, with Miss North City competing in regional contests.

Soon after Shoreline incorporated five decades later, North City business owners and residents began work with the City to revitalize the commercial district along 15th Avenue NE. Improvements to sidewalks, landscaping, street lights, and upgraded utilities were finished in 2006. The North City Business Association supports member business owners, and partners with the North City Water District to host an annual Tree Lighting Festival during the winter holidays.

There is a long tradition of musical entertainment in North City, starting with the Starlight Dome's big dance floor and six piece orchestra in the 1930s. Today's annual Jazz Walk, a collaboration between the Business Association, the City, and other contributors, brings world class musicians to Shoreline for a lively summer evening. Music lovers can enjoy live offerings throughout the year at North City Bistro and Easy Monkey Taphouse.

As plans for the new light rail station at 185th evolve, residents are getting ready for big changes. The North City Neighborhood Association collaborates with the Business Association, and looks forward to strengthening support for existing and future enterprise in the area. Association members host an annual summer picnic for neighbors at North City Elementary School, which currently houses the Shoreline Children's Center and will provide space for other schools while under construction. Find out more about the North City Neighborhood Association at northcity.org or contact info@northcityna.org.



Construction of the building that now is home to the North City Tavern. (1928)

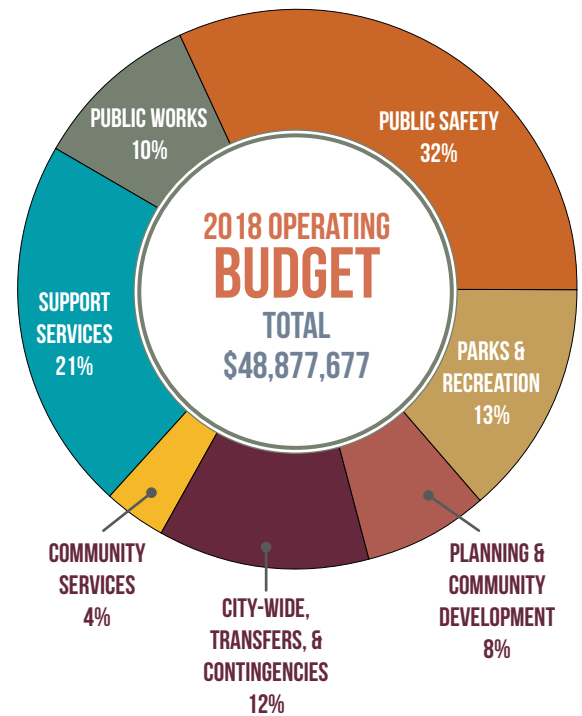


Jazz Walk on 15th Avenue NE, an annual summer event.

YOUR RESOURCES AT WORK IN THE CITY

The City's 2017 Budget totals \$79.9 million. The City's operating budget makes up almost 59% of the total. The operating budget represents the cost of providing services to the Shoreline Community on a day-to-day basis:

- PUBLIC SAFETY:** Police services; domestic violence assistance; prosecuting attorney; public defender; municipal court; and jail services.
- PARKS AND RECREATION:** Aquatics; parks and open space maintenance; recreation programs; events; and cultural services.
- PLANNING & COMMUNITY DEVELOPMENT:** Code enforcement; permitting; zoning; and comprehensive planning.
- CITY-WIDE, TRANSFERS, AND CONTINGENCIES:** Liability and property insurance; elections; recurring support provided to other funds for capital projects, debt service, and street maintenance; and operating contingencies.
- COMMUNITY SERVICES:** Customer Response Team; emergency management; neighborhoods coordination; and human services.
- SUPPORT SERVICES:** City Council; City Manager's Office; legal services; grant writing; budget; accounting; financial reporting; fleet and facilities; human resources; and information technology.
- PUBLIC WORKS:** Street and right-of-way maintenance; traffic management; and environmental services.

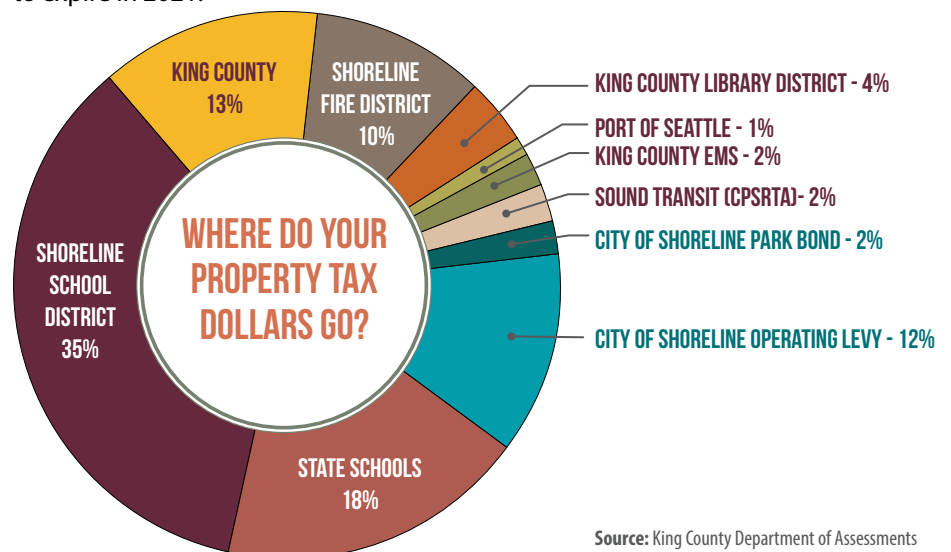


BUDGET SUMMARY

| | |
|------------------|---------------------|
| Operating Budget | \$48,877,677 |
| Capital Budget | \$16,471,047 |
| Utilities | \$9,223,466 |
| Debt Service | \$3,619,977 |
| Other Budgets | \$1,746,527 |
| Total | \$79,938,694 |

YOUR PROPERTY TAX DOLLAR

Out of all the property taxes paid by a Shoreline resident, about 14% goes to the City of Shoreline. This includes the City's operating levy, which voters renewed in 2016 and is used to fund City services, and the 2006 voter approved park bond levy. The City used parks bond levy funds to acquire open space and make a variety of park and trail improvements throughout the City. While the City has completed the work, the levy continues in order to repay the bonds. The levy is set to expire in 2021.



Source: King County Department of Assessments

ADOPTION OF BUDGET AND PROPERTY TAX LEVY

Monday, Nov. 20
7:00 p.m.
City Hall Council Chamber

MORE INFORMATION

shorelinewa.gov/budget
shorelinewa.gov/calendar

SHORELINE'S PEDESTRIAN PLAN



AS PART OF

our continuing look at transportation planning in Shoreline, this month we will examine our Pedestrian

System Plan. Developed as part of the 2011 Transportation Master Plan (TMP), the Pedestrian Plan identifies key arterials and local streets in need of improvements in order to create a network of sidewalks.

A complete build out of the Pedestrian Plan includes approximately 153 miles of sidewalks. A little more than 78 miles currently exists. When the City incorporated, we had 54 miles of sidewalks. Since incorporation, we have constructed 17.6 more miles with funds from our capital budget. Private development has paid for the construction of 6.7 miles. That leaves approximately 75 miles of sidewalks that still need be constructed.

In addition to the need for building new sidewalks, we also work to maintain our existing 78 miles of sidewalk infrastructure through the Curb Ramp, Gutter, and Sidewalk Maintenance Program. We manage this program as part of the Capital Improvement Plan (CIP). It has been a part of our CIP since 1998 and has provided for Americans with Disabilities Act (ADA) improvements and other pedestrian access improvements throughout the city.

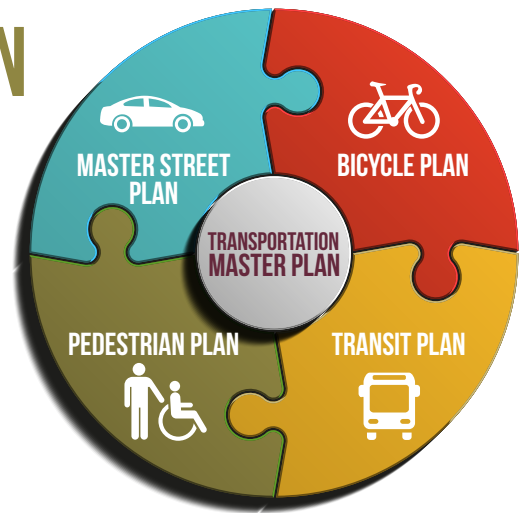
Our current approach to prioritizing new sidewalks

The 2011 Pedestrian Plan uses a set of criteria to help prioritize sidewalk projects. It categorizes projects into high, medium, and low priority projects. However, because we do not currently have a dedicated funding source to construct new sidewalks, construction often depends on available funds.

This means that low priority sidewalks might be built before higher priority ones because it is tied to a larger capital improvement project or there may be grant funding available for that particular type of project. Construction of pedestrian improvements by private development may also result in projects being implemented out of sequence.

Data driven prioritization for updated Pedestrian Plan

Since the community developed the Pedestrian Plan in 2011, a lot has changed in Shoreline. It is time to update the Plan. Over the past year, we have worked with the Sidewalk Advisory Committee to develop a data-driven mapping process that uses revised criteria to identify needs and prioritize improvements. The updated sidewalk prioritization criteria better aligns with Council Goals, specifically addressing safety and equity concerns. In addition, the primary criteria more precisely state the intended objective. Each primary criterion includes measurable metrics to support the intended objective. For example, "Walkability" would include metrics that measure proximity to schools, parks, and activities centers.



Proposed prioritization criteria:

- **Safety** – identifies locations in need of increased safety measures based on collisions, traffic speed and volume; and opportunities for trails or paths.
- **Equity** – provides support to populations who have the greatest need e.g. children, senior citizens, people with disabilities, lower income communities, an underserved communities.
- **Walkability** – improves pedestrian connections to schools, parks, transit, and activity centers
- **Connectivity** – builds a network of connected pedestrian routes.

REVIEW MATERIALS & PROVIDE YOUR COMMENTS

City staff and the Sidewalk Advisory Committee presented the proposed criteria to the public at an open house in October. Using feedback gathered at the open house, the committee and City staff will refine the criteria.

Materials from the October 17 Open House #1 are available online at shorelinewa.gov/sidewalks. Review the material and provide your comments. We will keep the comment period open until Friday, December 1.

SHORELINEWA.GOV/SIDEWALKS

New Permit Center open on third floor of City Hall

Construction on the first floor begins

OUR PERMIT CENTER has moved from the first floor to the third floor. If you need to get a permit or speak with someone in our Planning and Community Development Department, take the elevators to the third floor and follow the signs around to the left.

Construction of our new police station on the first floor is well underway. The new addition to the eastside of City Hall is taking shape while crews are working hard on renovating inside. To help shield the Clerk's Office from construction work, crews constructed a temporary wall. In February, the Clerk's office will move to a temporary location while their area is renovated.

We anticipate construction completing and the police moving into their new offices by May 2018. Thank you for your patience as City Hall has undergone renovation.

DID YOU KNOW?

The best place in Shoreline to find sustainably made, recycled-content holiday gifts also provides drop-off recycling for much of your holiday waste. Stop by The Recology Store in Shoreline to shop their selection of locally made, up-cycled, and lighter-on-the-earth gifts and drop off styrofoam, old electronics, used household batteries and many other hard-to-recycle items that cannot be recycled in your curbside cart.

Stop by today to help close the loop while crossing a few items off your holiday list.

For more information, visit recology.com/recology-cleanscapes/shoreline/recology-store/.

The Recology Store Shoreline

15235 Aurora Avenue N

Tuesday- Saturday, 11:00 a.m. to 7:00 p.m.

Sunday, 11:00 a.m. to 5:00 p.m.

(206) 417-3877

SHORELINE CITYWISE PROJECT

HAVE YOU EVER WONDERED who maintains our roads, how the City creates a budget or plans for the future of our parks? Curious citizens will have an opportunity to learn how local government works in the second Shoreline CityWise Project, a series of eight interactive classes starting in January 2018.

First offered in 2017 as a pilot project, CityWise provides insight into the wide range of services provided by the City. In sessions with elected officials and City staff, participants learn about the structure of Shoreline government, and how different departments function. The second half of each class allows students to experience what they have just learned through role-playing, from making split-second decisions in a Police training video to timing a traffic light.

Classes will meet at City Hall on Tuesday evenings starting January 23, with a Parks visit on a Saturday morning. The number of participants is limited. Applications will be available at shorelinewa.gov beginning December 4. For more information, contact Neighborhoods Coordinator Constance Perenyi at (206) 801-2253 or cperenyi@shorelinewa.gov.



I most liked learning from the experts in their fields. They were all very knowledgeable, friendly, and forthcoming, so we had the opportunity to learn directly from the people that do it every day."

2017 CityWise Graduate

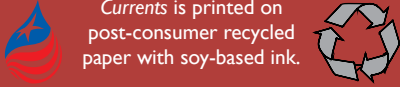


**MORE INFORMATION:
SHORELINEWA.GOV/CITYWISE**

November 2017 Vol. 19 No. 9
CITY OF SHORELINE
CURRENTS

Currents is produced by the
Shoreline City Manager's Office
Contact the City:
(206) 801-2700

**Alternate formats
available upon request**



Currents is printed on
post-consumer recycled
paper with soy-based ink.

Web: shorelinewa.gov

facebook.com/shorelinewa

twitter.com/shorelinewagov

youtube.com/cityofshoreline



17500 Midvale Avenue N
Shoreline, WA 98133-4905

PRSR STD
US Postage
PAID
Seattle, WA
Permit No. 248

ECRWSS
POSTAL CUSTOMER

Shoreline Walks



Volunteer Walk Leaders Wanted for 2018!

Have a great walking route you
want to share with others?
Contact us for more information
about becoming a walk leader
and leading free community
walks around Shoreline.

More Information

ShorelineWA.gov/ShorelineWalks

206-801-2638

New walks start in April 2018!