

CITY OF SHORELINE

Right-of Way Tree Management

August 7, 2017



Public Tree Management

- SMC Chapter 12.30: *Public Tree Management*.
 - places the responsibility for all City-owned trees with PRCS
 - authorizes the PRCS Board to serve as the City's Tree Board.
- SMC Chapter 12.30.040: *Right-of-way street trees*.
 - requires a permit issued by the PRCS Director for planting, pruning or removing trees in the right-of-way adjacent to the applicant's property.

Right-of-Way Tree Management

- General tree maintenance
- Removal of hazardous trees
- Removal of trees as part of a public works street or sidewalk maintenance project
- Permits for planting, pruning or removing trees in the right-of-way
- Planting trees in the right-of-way

- General tree maintenance



- General tree maintenance



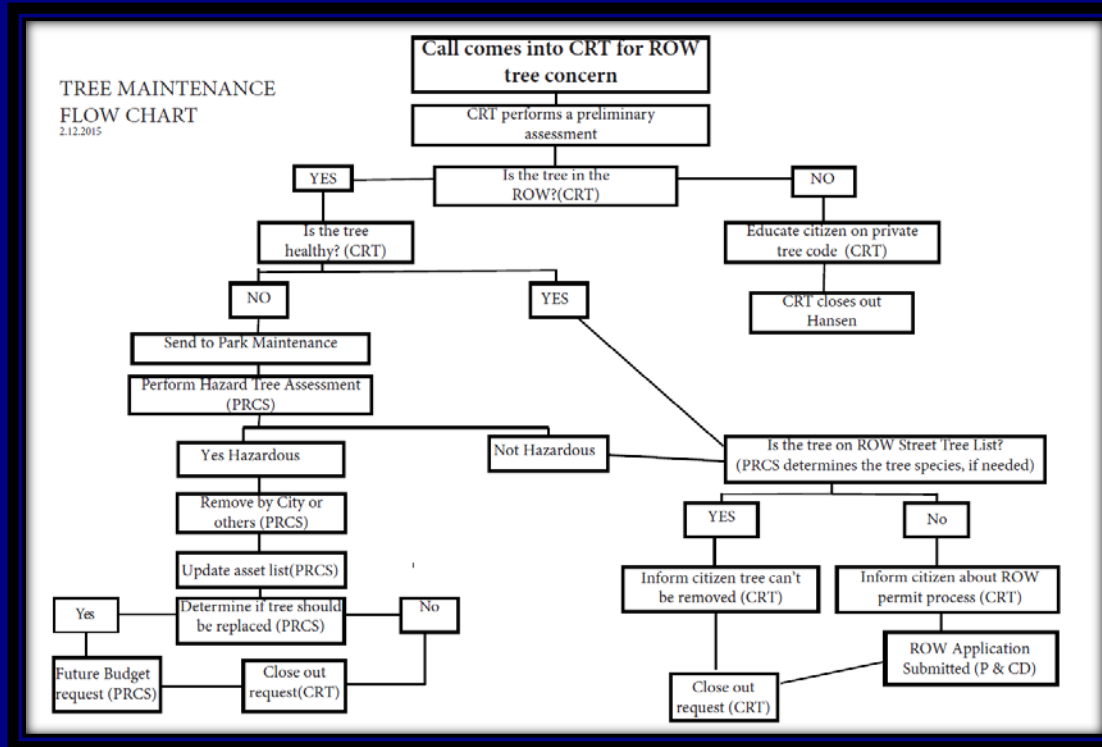
- Removal of hazardous trees



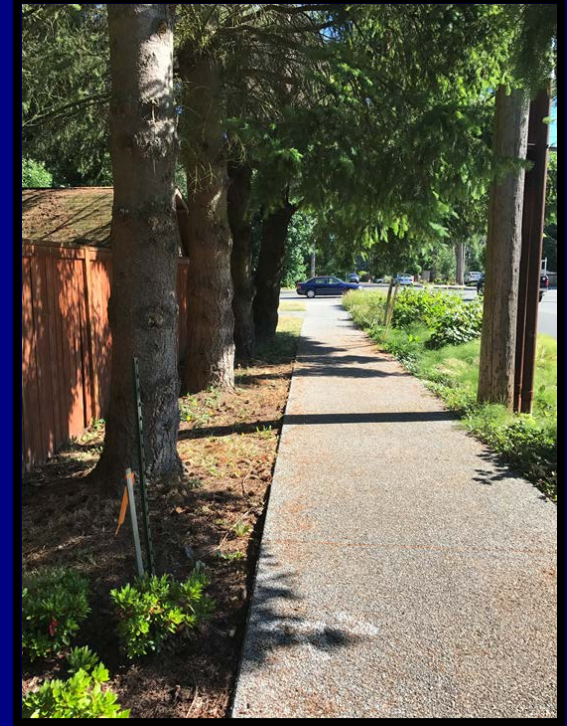
- Removal of hazardous trees



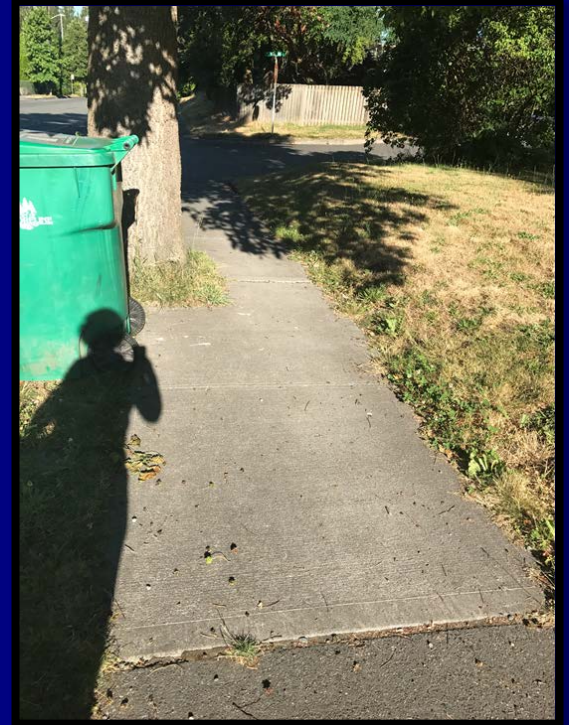
- Removal of hazardous trees



- Trees as part of a public works street or sidewalk maintenance project



- Trees as part of a public works street or sidewalk maintenance project



- Trees as part of a public works street or sidewalk maintenance project



- Permits for planting, pruning or removing trees in the right-of-way



- Planting trees in the right-of-way



- Planting trees in the right-of-way



- Planting trees in the right-of-way



Right-of-Way (ROW) Street Tree List

Medium Trees - continued

Scientific & Common Name	Mature Height (ft)	Spread (ft)	Under Wires/View Covenants	Min Strip Width (ft)	Flower Color	Fall Color	Comments
<i>Magnolia grandiflora</i> 'Victoria' Victoria Evergreen Magnolia	25	20	Yes	5		N/A	Evergreen magnolia – can be damaged in years with wet, heavy snow. Great Plant Pick
<i>Magnolia kobus</i> 'Wada's Memory' Wada's Memory Magnolia	30	20	Yes	5			Does not flower well when young. Great Plant Pick
<i>Ostrya virginiana</i> Ironwood	40	25	No	5	N/A		Hop like fruit – slow growing
<i>Phellodendron amurense</i> 'Macho' Macho Cork Tree	40	40	No	5	N/A		This variety is fruitless – fall color can be varied. High drought tolerance
<i>Prunus cerasifera</i> 'Krauter Vesuvius' Vesuvius Flowering Plum	30	20	Yes	5		N/A	Burgundy colored leaves – tree best used as an accent rather than in mass plantings
<i>Pterostyrax hispida</i> Fragrant Epaullette Tree	40	30	No	5			Pendulous creamy white flowers – fragrant – difficult to find in the nursery trade
<i>Quercus Ilex</i> Holly Oak	40	30	No	5	N/A	N/A	Evergreen oak - Underside of leaf is silvery-white. Often has a prominent umbrella form



Discussion

