

# State of the City Shoreline, Washington

Wednesday, June 4, 2014

## Investing in a Vibrant Shoreline!









# Saltwater Park Terrace



After

# Saltwater Park Terrace



Before

Community Garden



Before

Community Garden



After

Cromwell Park



Before

Cromwell Park



After

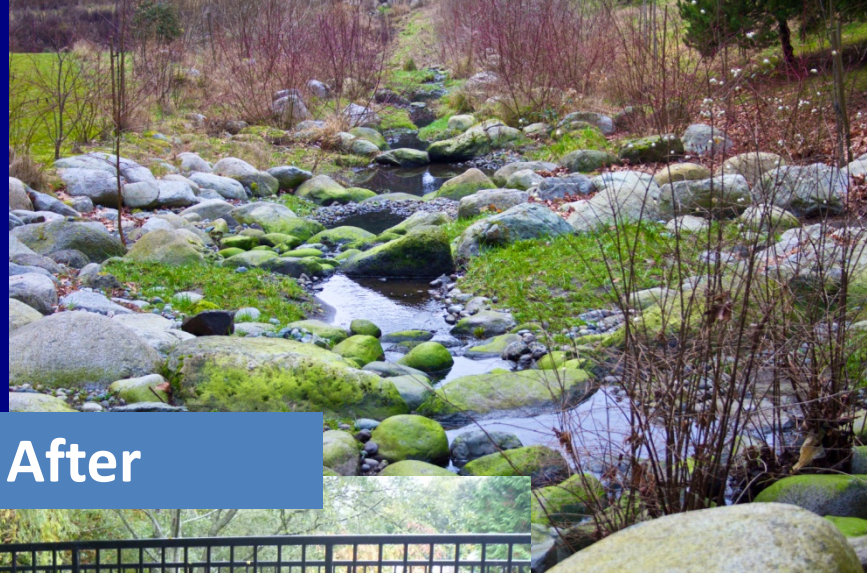




Before



After









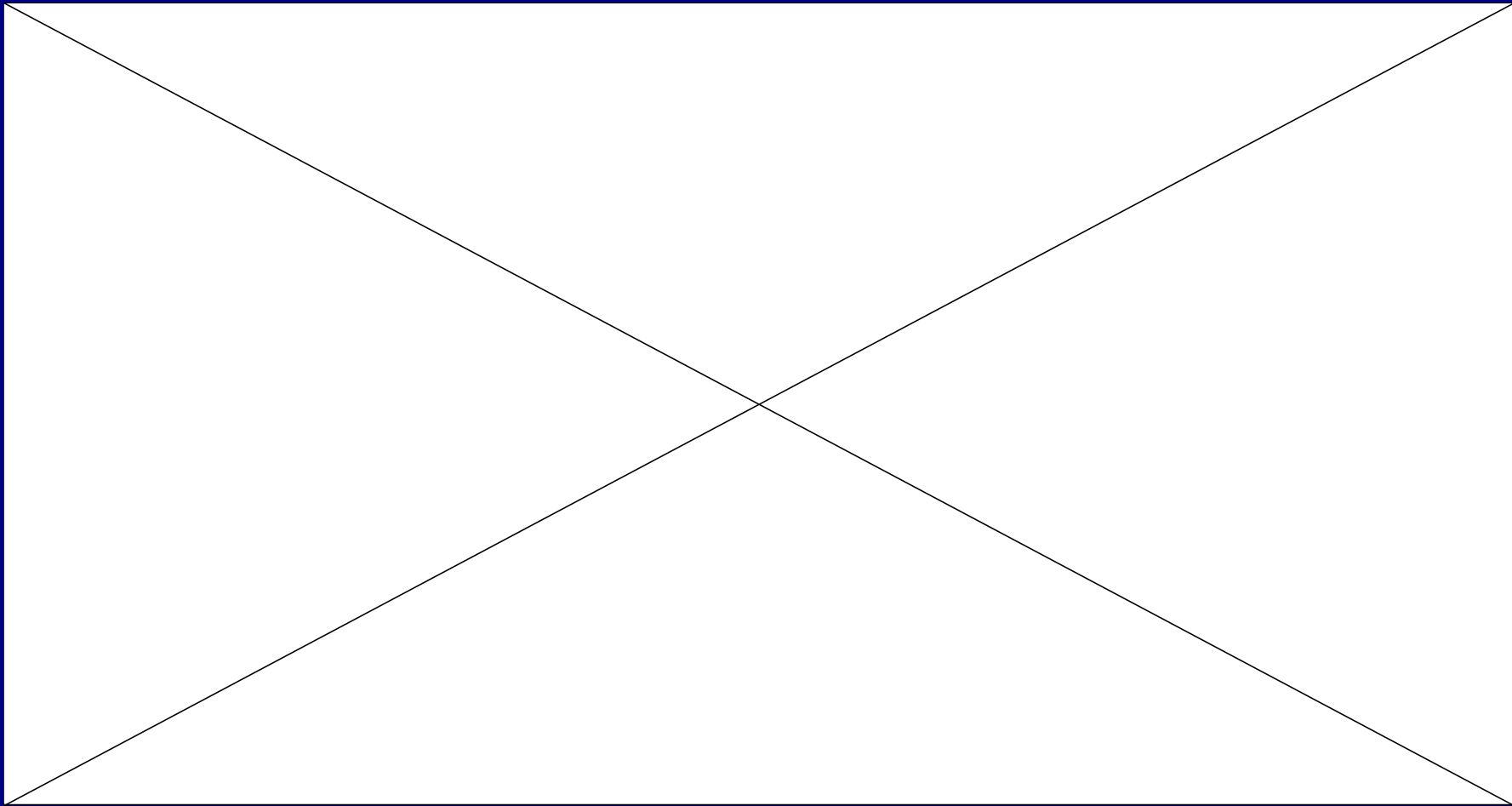
## SHORELINE ENVIRONMENTAL SUSTAINABILITY STRATEGY



**FINAL**

City of Shoreline  
July 14, 2008







**2014 KIDS MOVE CHALLENGE**

City of SHORELINE

City of SHORELINE

Mark a trail strip for every 60 minutes you move!

**START**

**FINISH**

Saturday, Aug. 16 2:30 p.m.

SWIM

BIKE RIDE

SKIP

SLIP N' SLIDE

TENNIS

JUMP ROPE

BASEBALL

RUN

DODGEBALL

HIKE

HULA HOOP

WALK







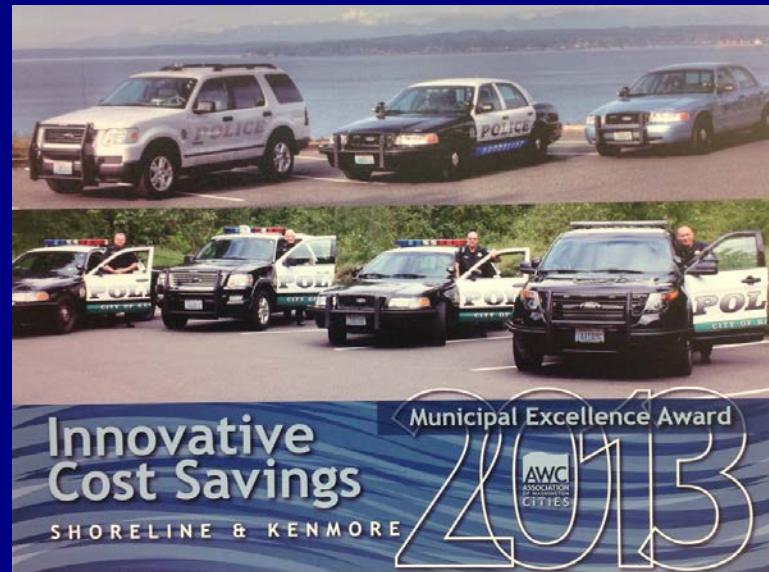


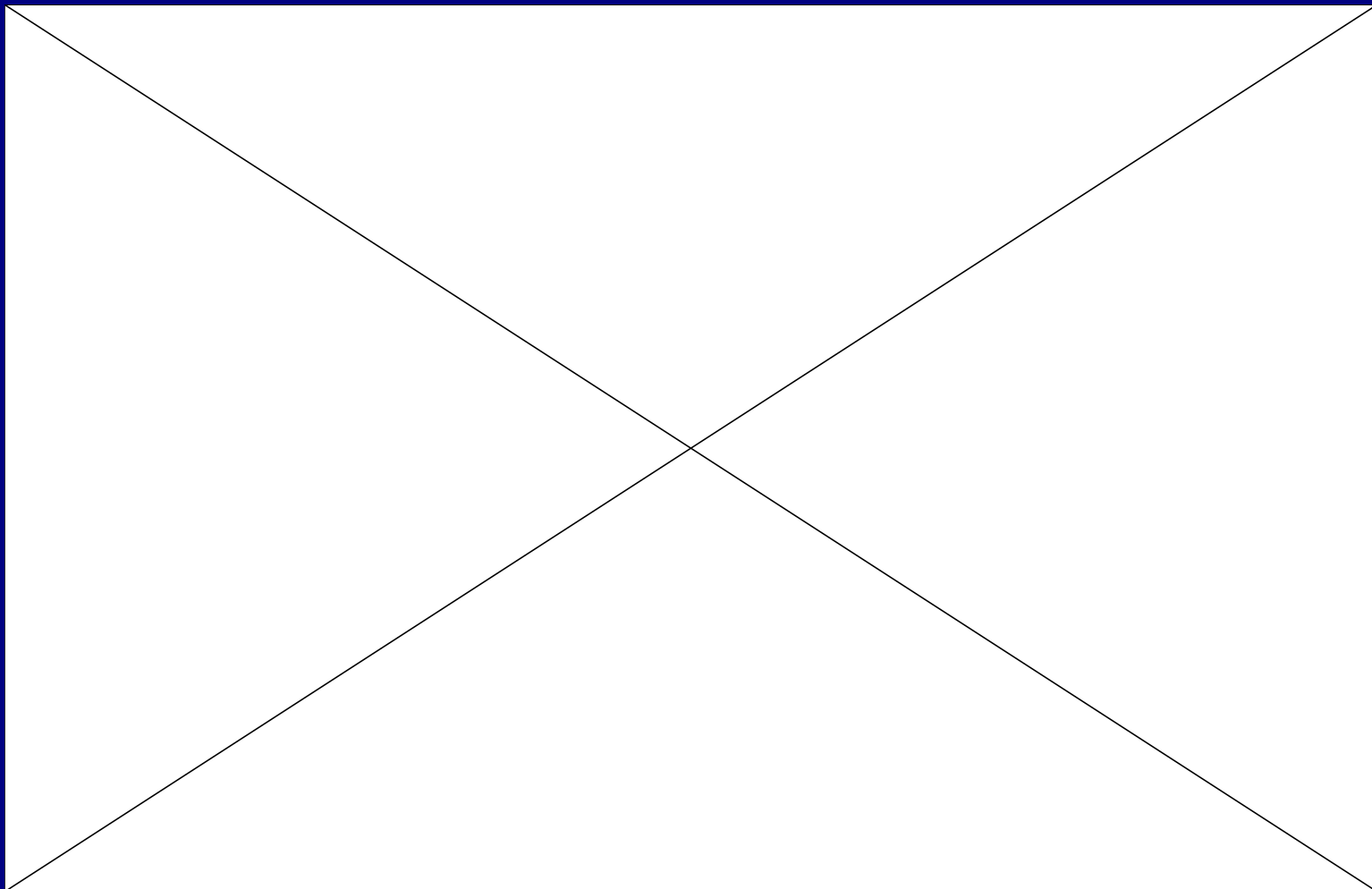
# SHORELINE CITY HALL

17500









# Public Investment

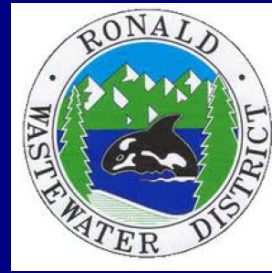
Investing in a Vibrant Shoreline







U.S. Department of Transportation  
**Federal Highway  
Administration**



Seattle  
 Public  
Utilities

 **Seattle City Light**

 **WSDOT**



  
**King County**



Puget Sound Regional Council  

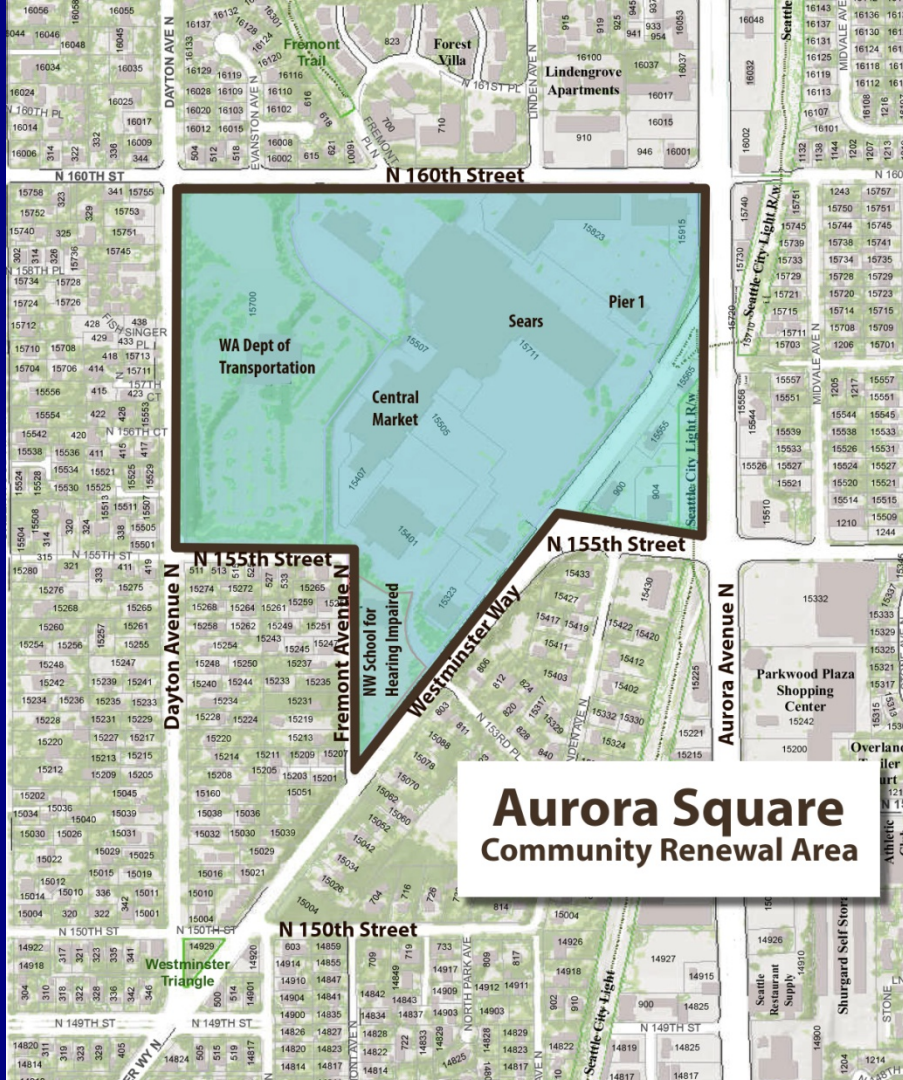










**Aurora Square  
Community Renewal Area**





## VISION 2029

Imagine for a moment that it is the year 2029 and you are in the City of Shoreline. This vision statement describes what you will see.



# Partner Investments

Investing in a Vibrant Shoreline



International Community  
Health Services  
ICHS

# ICHS



US BioTek Laboratories, Inc.



# US BioTek



Shoreline Community College



SCC

Inland Group



**Polaris**



**Inland Group**



**The Blakely**



CITY OF SHORELINE  
INCORPORATED 1995

# What can you do?

1. Promote Shoreline
2. Work for progressive change as we move towards Vision 2029
3. Continue to do the great work

# Thank you!

## Investing in a Vibrant Shoreline

